

ENTRANCE PERSPECTIVE ALONG S. CAPITOL ST.

1325 South Capitol Street SW
Supplemental Zoning Submittal
03/07/07



CAMDEN.

ZONING COMMISSION
District of Columbia
CASE NO.06-41
EXHIBIT NO.35C

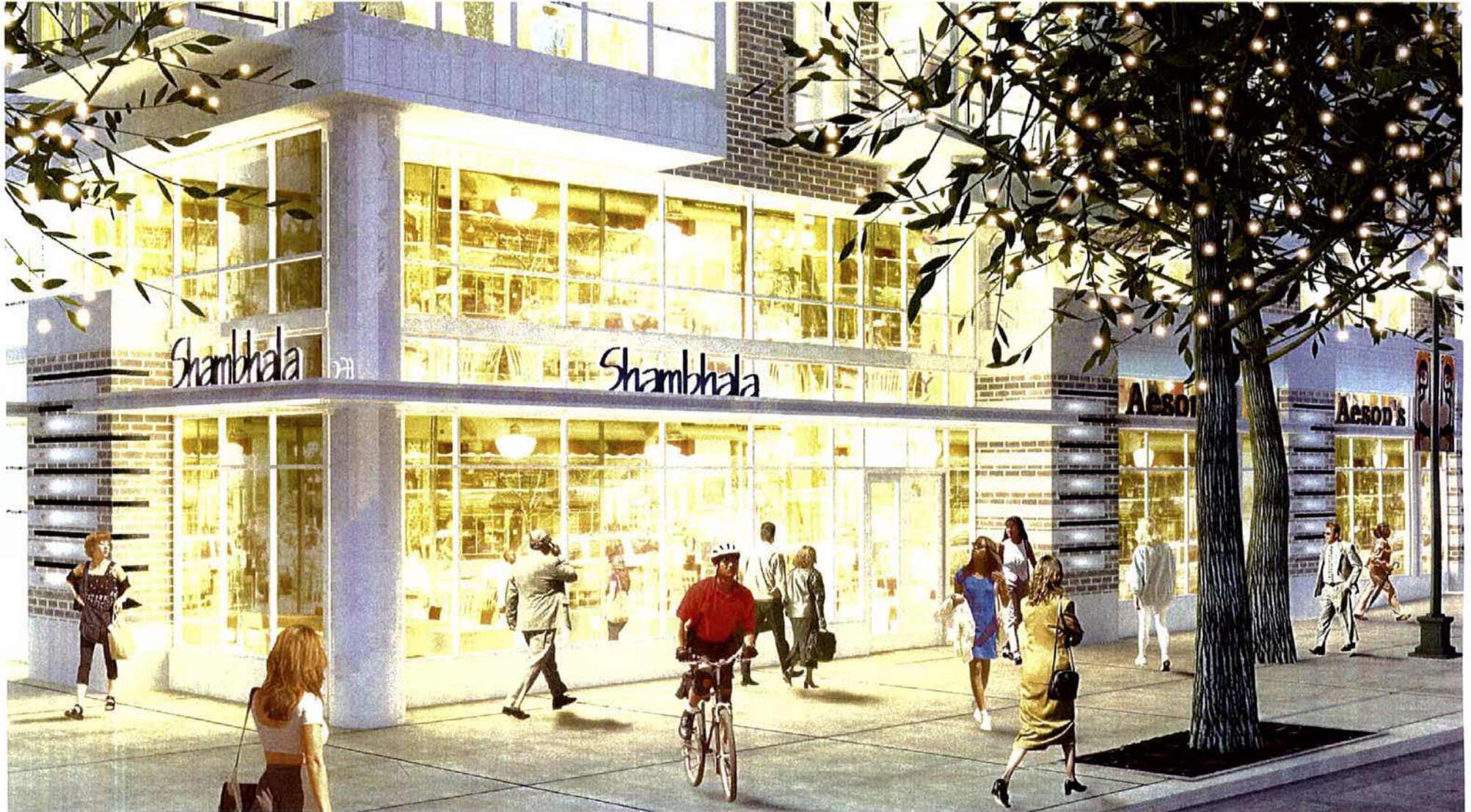


NORTH END PERSPECTIVE ALONG S. CAPITOL ST.

1325 South Capitol Street SW
Supplemental Zoning Submittal
03/07/07



CAMDEN 



RETAIL CORNER PERSPECTIVE ALONG S. CAPITOL ST.

1325 South Capitol Street SW
Supplemental Zoning Submittal
03/07/07



CAMDEN 



RETAIL CORNER ELEVATION ALONG S. CAPITOL ST.

1325 South Capitol Street SW
 Supplemental Zoning Submittal
 Scale: 3/16" = 1'-0"
 03/07/07



CAMDEN. 



ENTRANCE ELEVATION ALONG S. CAPITOL ST.

1325 South Capitol Street SW
 Supplemental Zoning Submittal
 Scale: 3/16" = 1'-0"
 03/07/07

MAZDA

CAMDEN. 



NORTH END ELEVATION ALONG S. CAPITOL ST.

1325 South Capitol Street SW
 Supplemental Zoning Submittal
 Scale: 3/16" = 1'-0"
 03/07/07



CAMDEN. 