

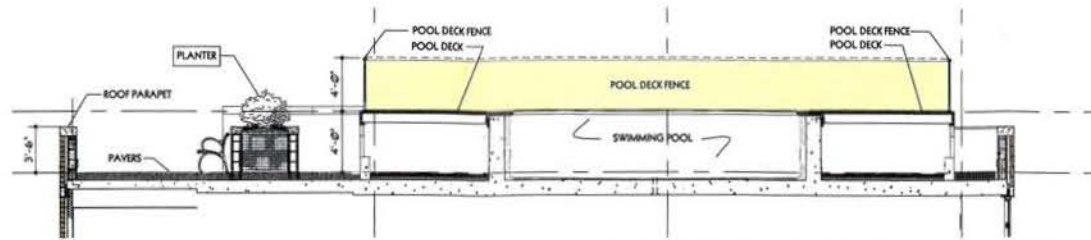
ROOF PLAN AND SECTION ELEVATION

WDG  
ARCHITECTS

1325 South Capitol Street SW  
Supplemental Zoning Submittal  
Scale: 1/16" = 1'-0"  
03/07/07

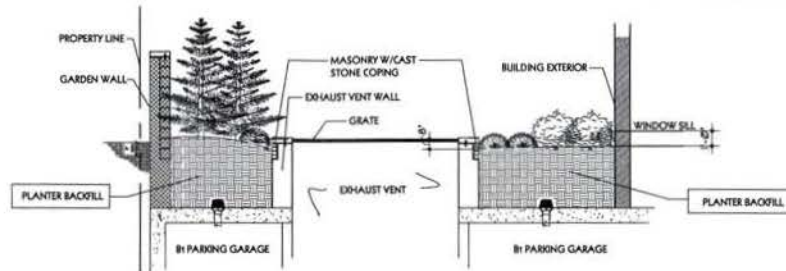
CAMDEN

ZONING COMMISSION  
District of Columbia  
CASE NO.06-41  
EXHIBIT NO.35A



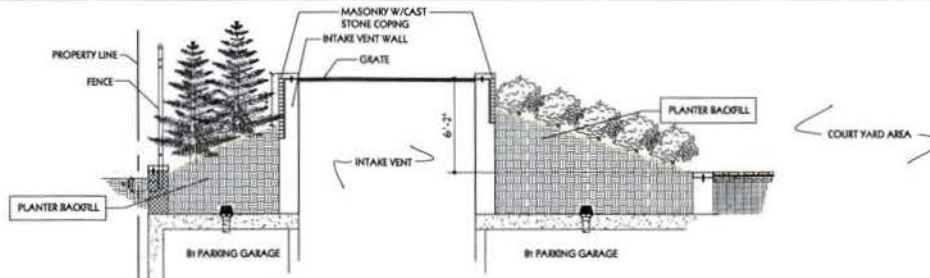
POOL SECTION @ PENTHOUSE LEVEL

3



SECTION @ EXHAUST VENT - AT COURT YARD

2



SECTION @ INTAKE VENT - AT COURTYARD

1



WDG Architecture, PLLC  
1025 Connecticut Avenue NW  
Suite 300  
Washington DC 20036  
tel 202 857 8300  
fax 202 463 2198  
e-mail wdg@wdgarch.com

1325 SOUTH CAPITOL STREET, SW

WASHINGTON, DC

WDG PROJECT NO.: WA05078

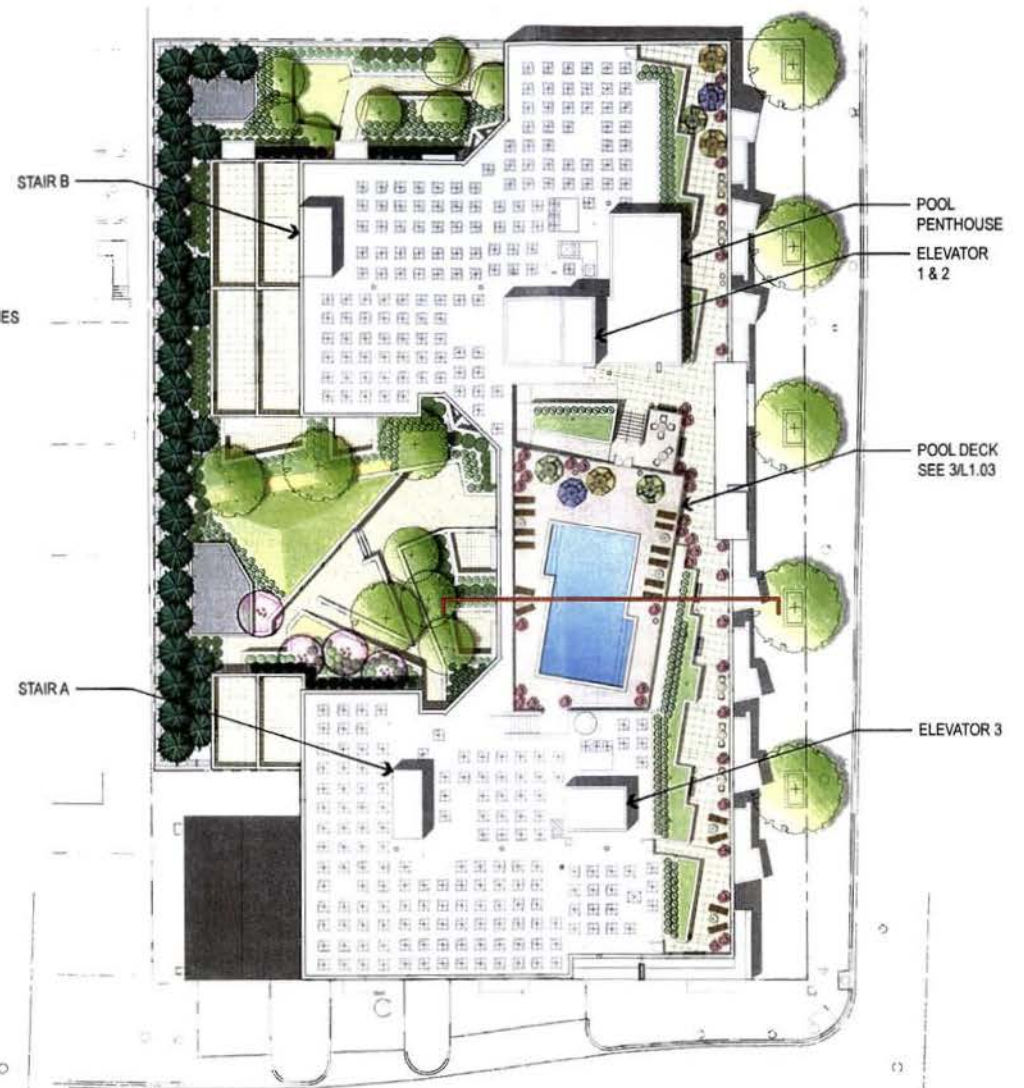


Vent and Pool  
Sections  
03.09.07 Scale: 1/8" = 1'-0"

L1.03



GROUND FLOOR PLAN



ROOF PLAN