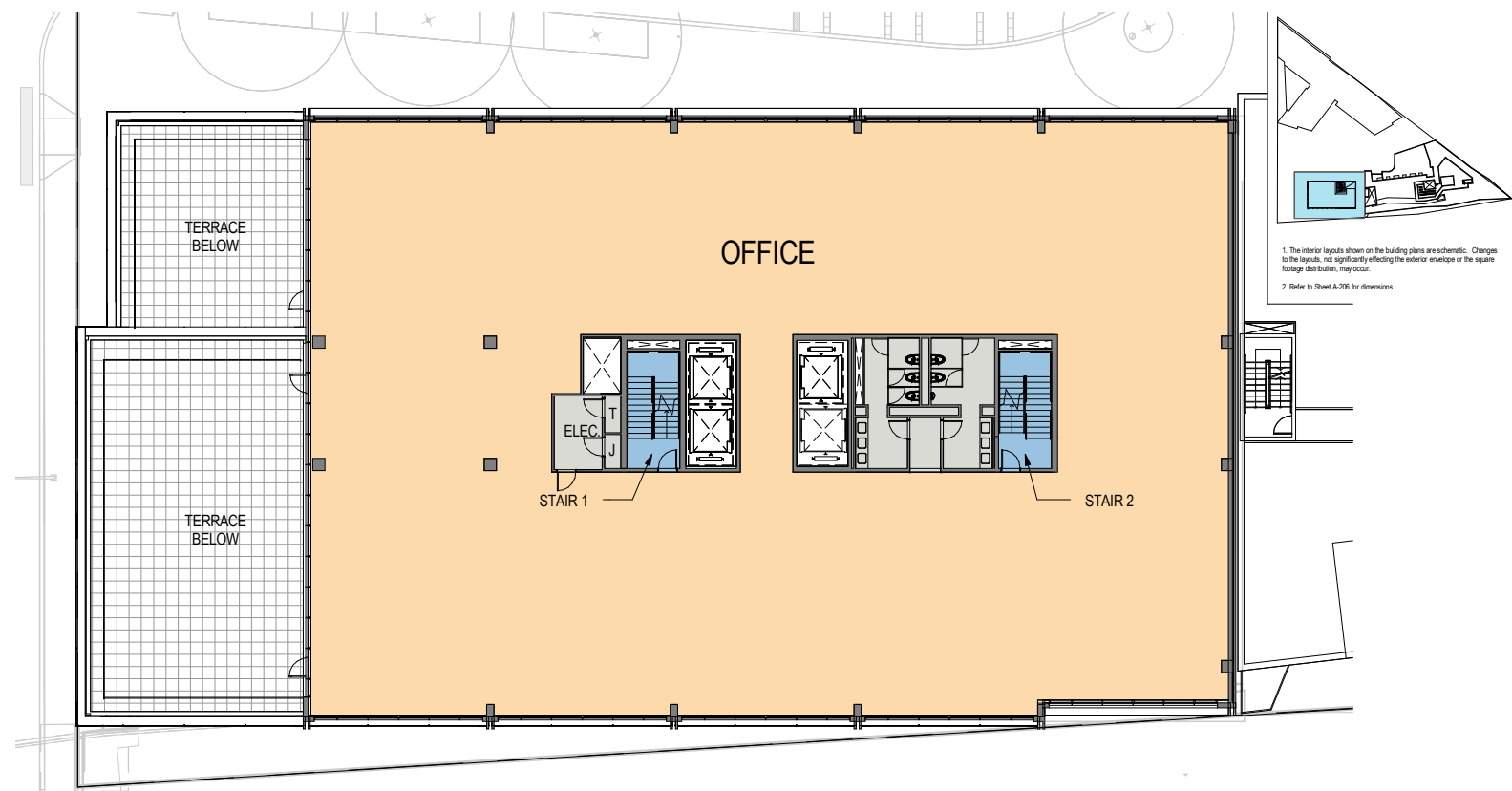
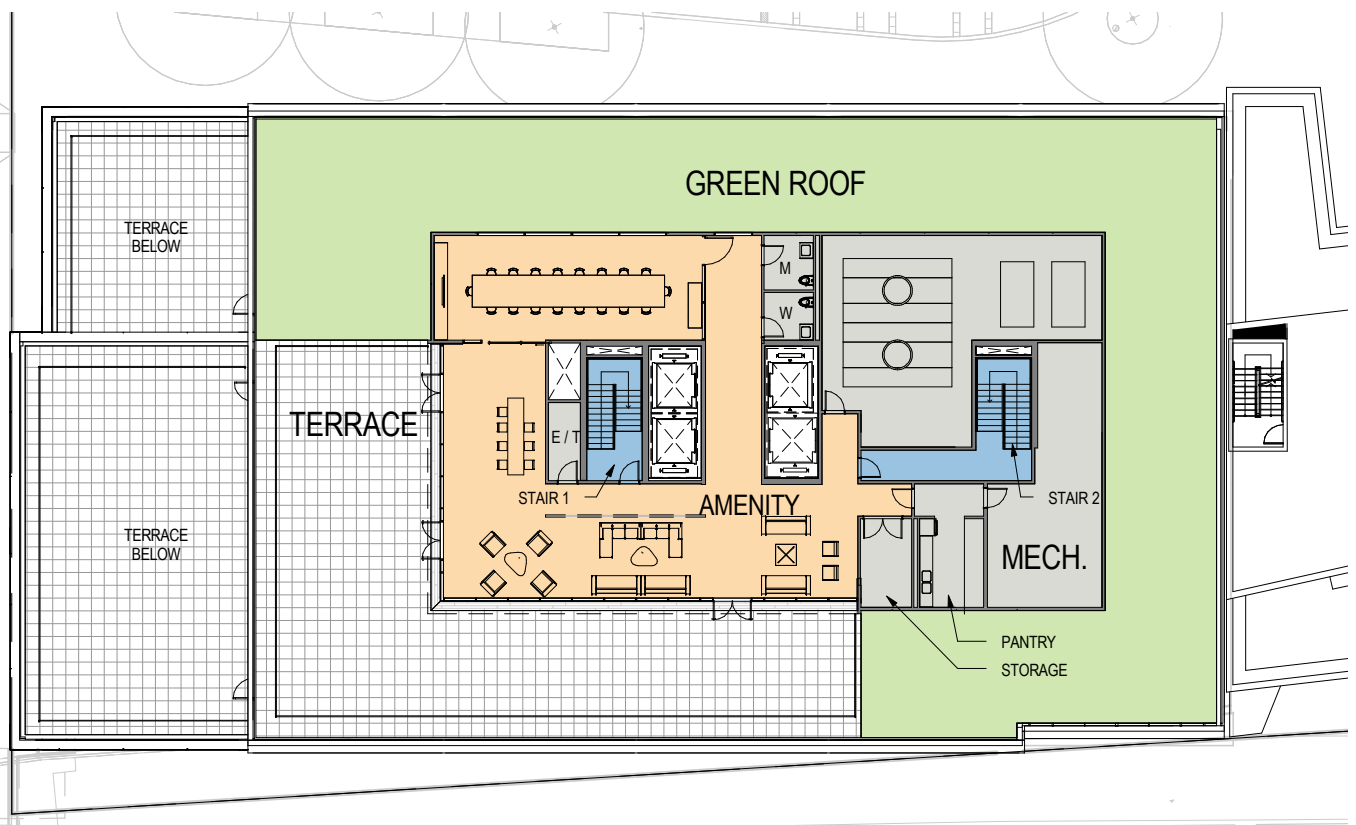


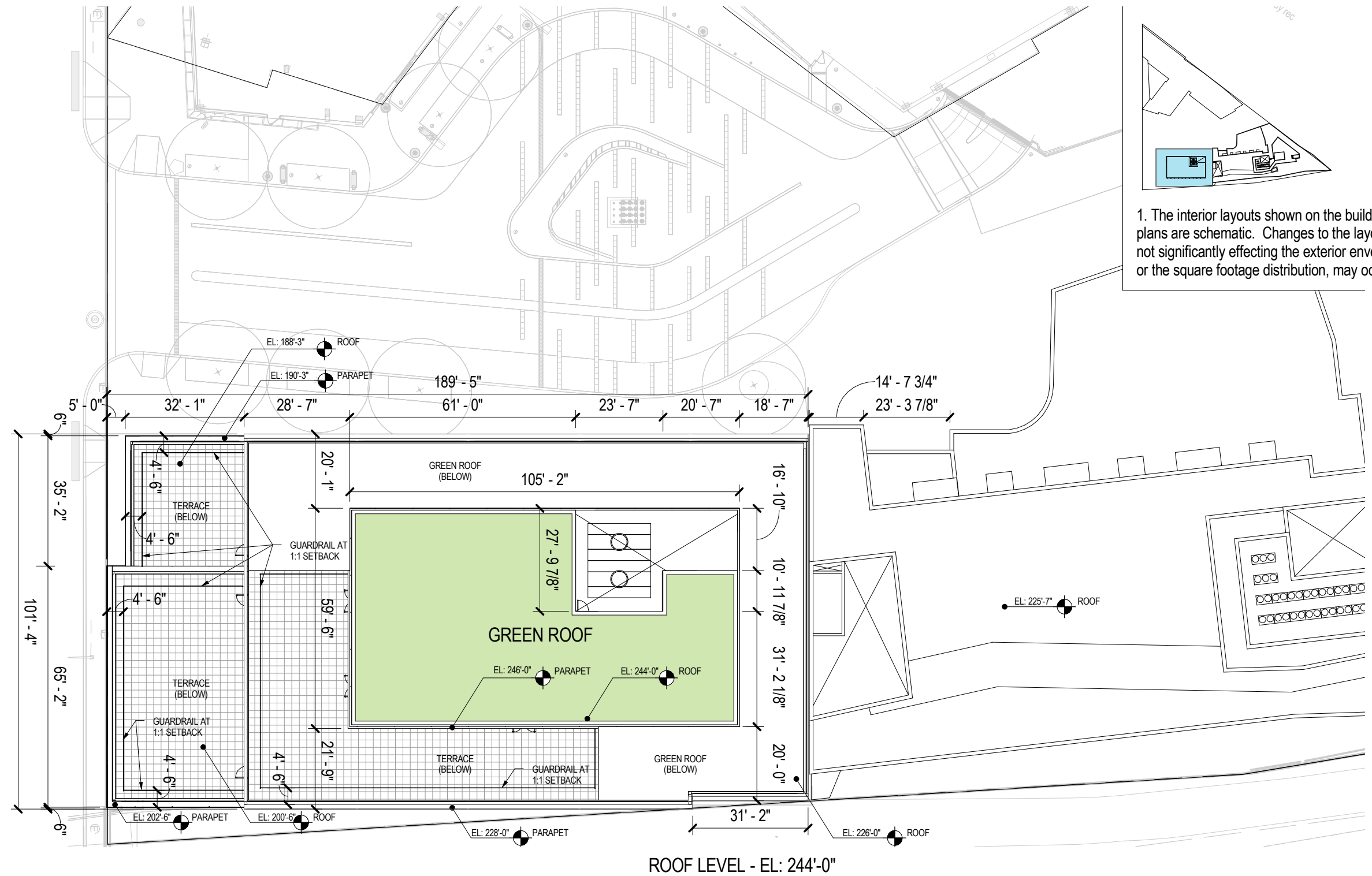
LEVEL 12 - EL: 200'-6"

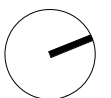
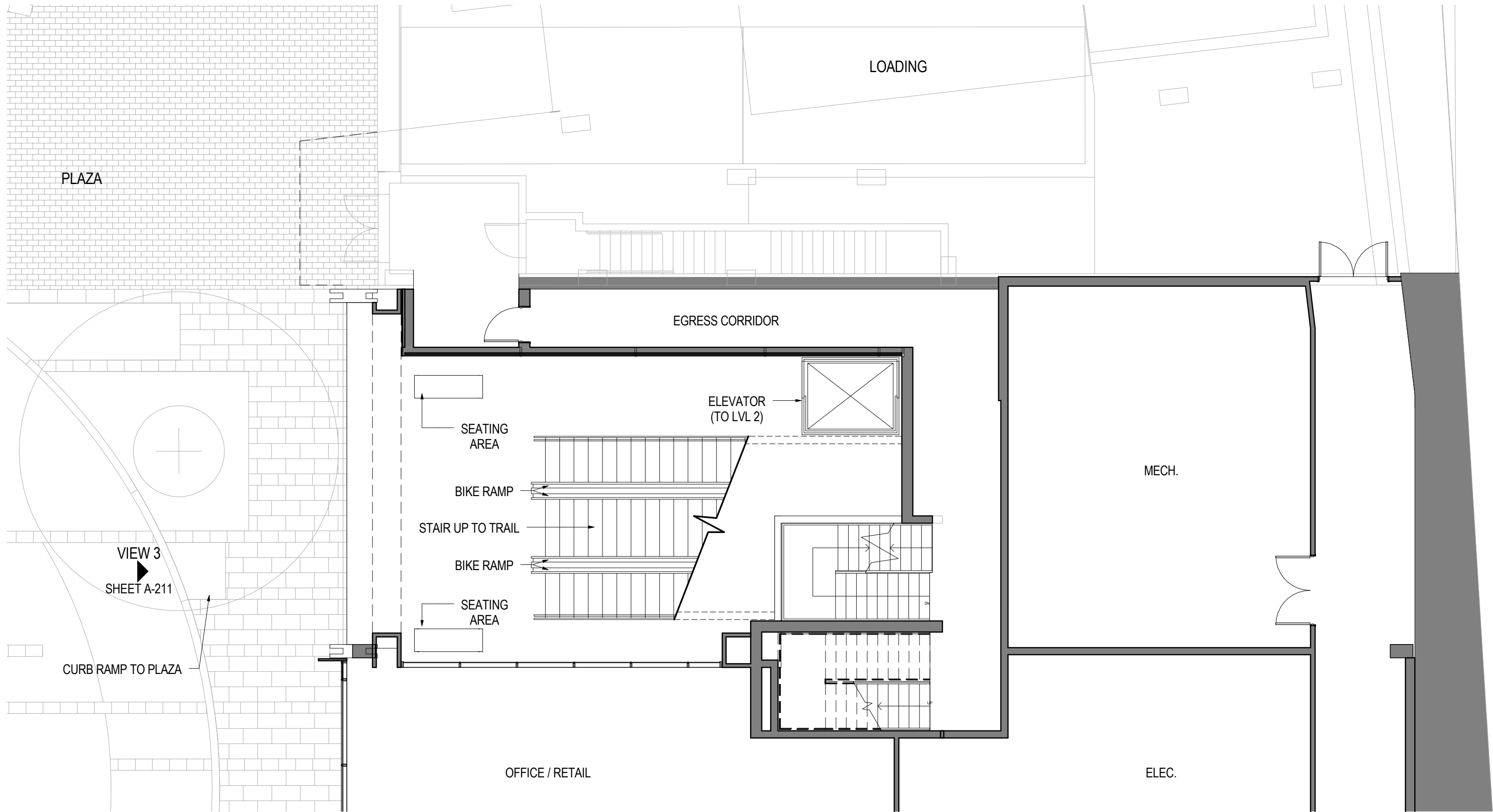


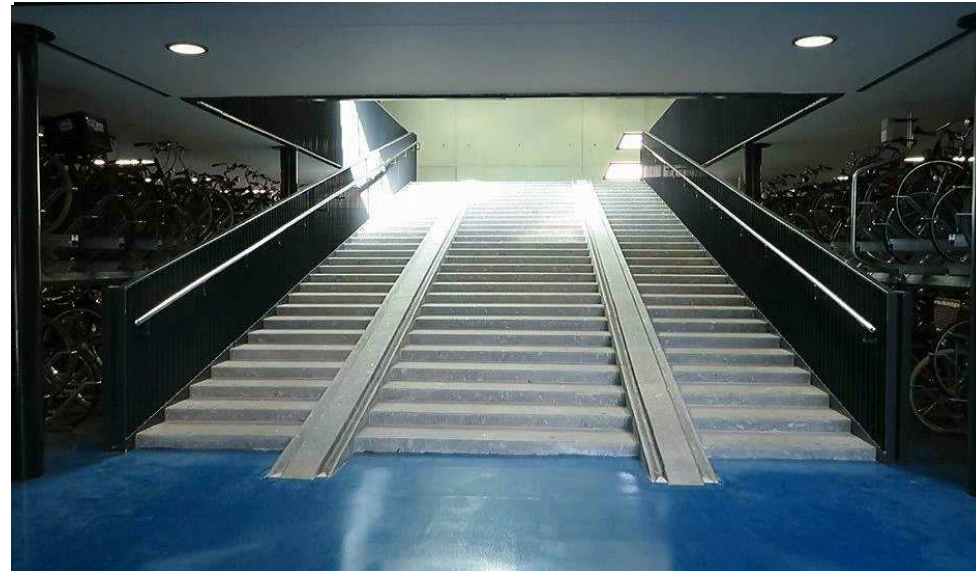
LEVEL 13 - EL: 212'-9"



LEVEL PH - EL: 226'-0"

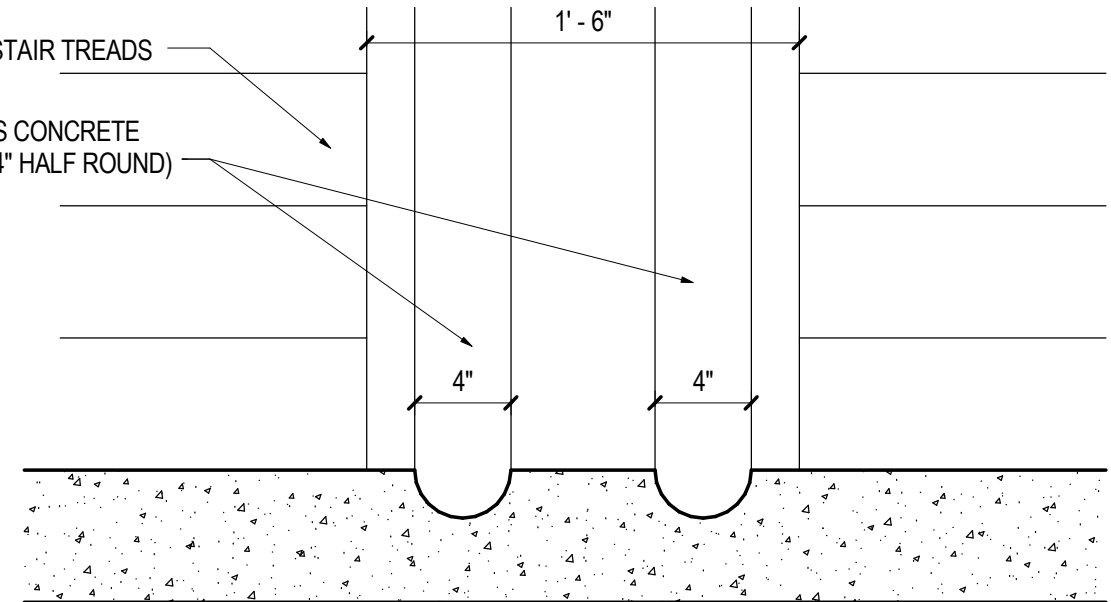






CONCRETE STAIR TREADS

CONTINUOUS CONCRETE BIKE RAMP (4" HALF ROUND)



SECTION A - TYP. BIKE RAMP

EXAMPLE BIKE RAMPS

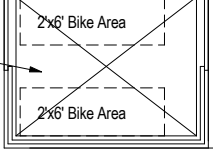
RESIDENTIAL TOWER ACCESS

VIEW 1 SHEET A-210

"PERCH" - SEATING & COUNTER

EL. 63'-6"

ELEVATOR (TO PLAZA)



TRAIL MAPS & INFORMATION

DRINKING FOUNTAIN & BOTTLE FILLER

SEATING

REPAIR AREA (WITH TIRE PUMP)

STAIR DOWN TO PLAZA (5.5" RISERS, 15" TREADS)

EL. 75'-3"

BIKE RAMP

SECT. A

4'-0 1/2"

BIKE RAMP

SECT. A

5'-0"

4'-0 1/2"

VENDING

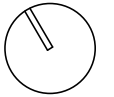
EMERGENCY CALLBOX

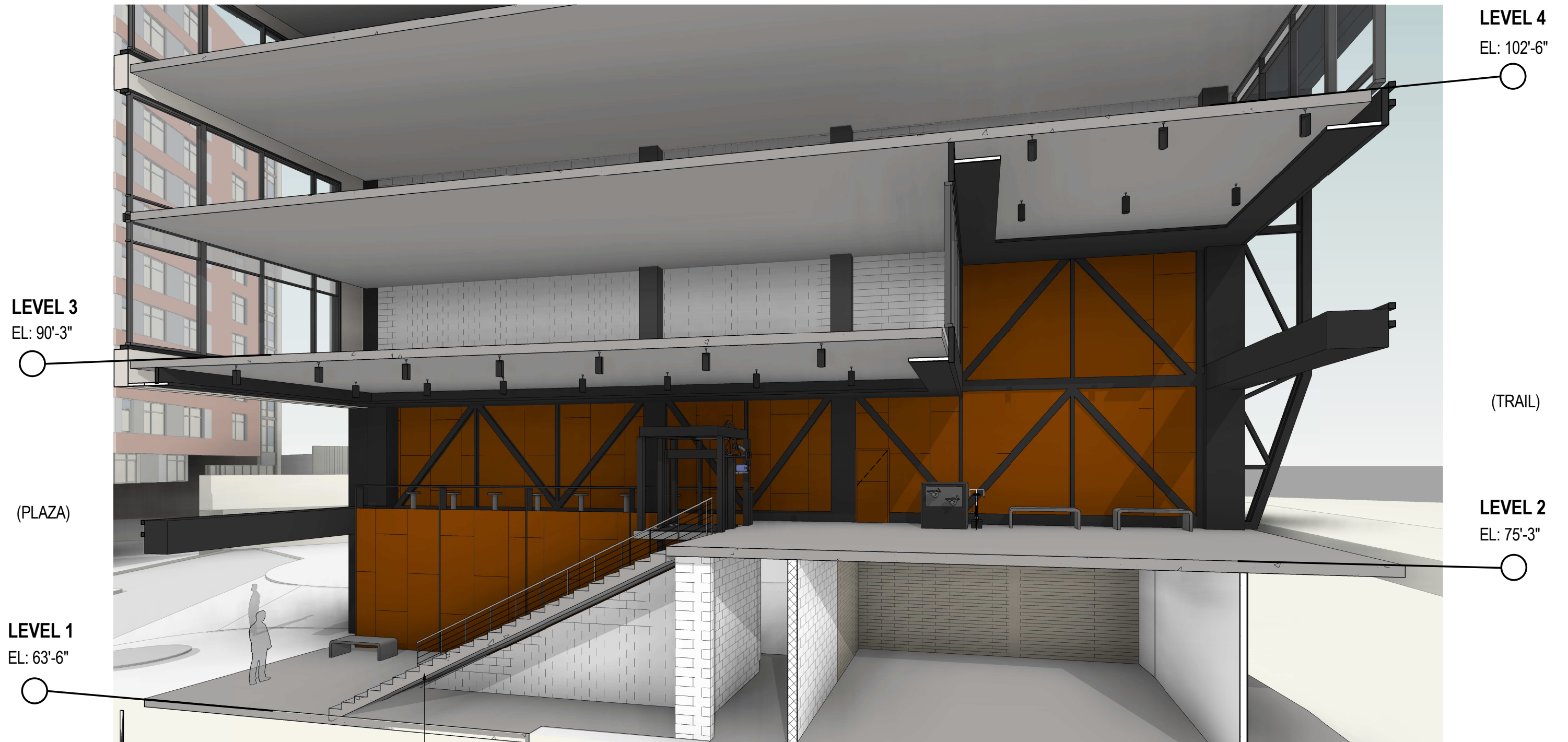
BIKE RACKS (12 SPACES)

VIEW 2 SHEET A-211

VIEW 4 SHEET A-212

FITNESS (OFFICE)





LEVEL 3
EL: 90'-3"

LEVEL 4
EL: 102'-6"

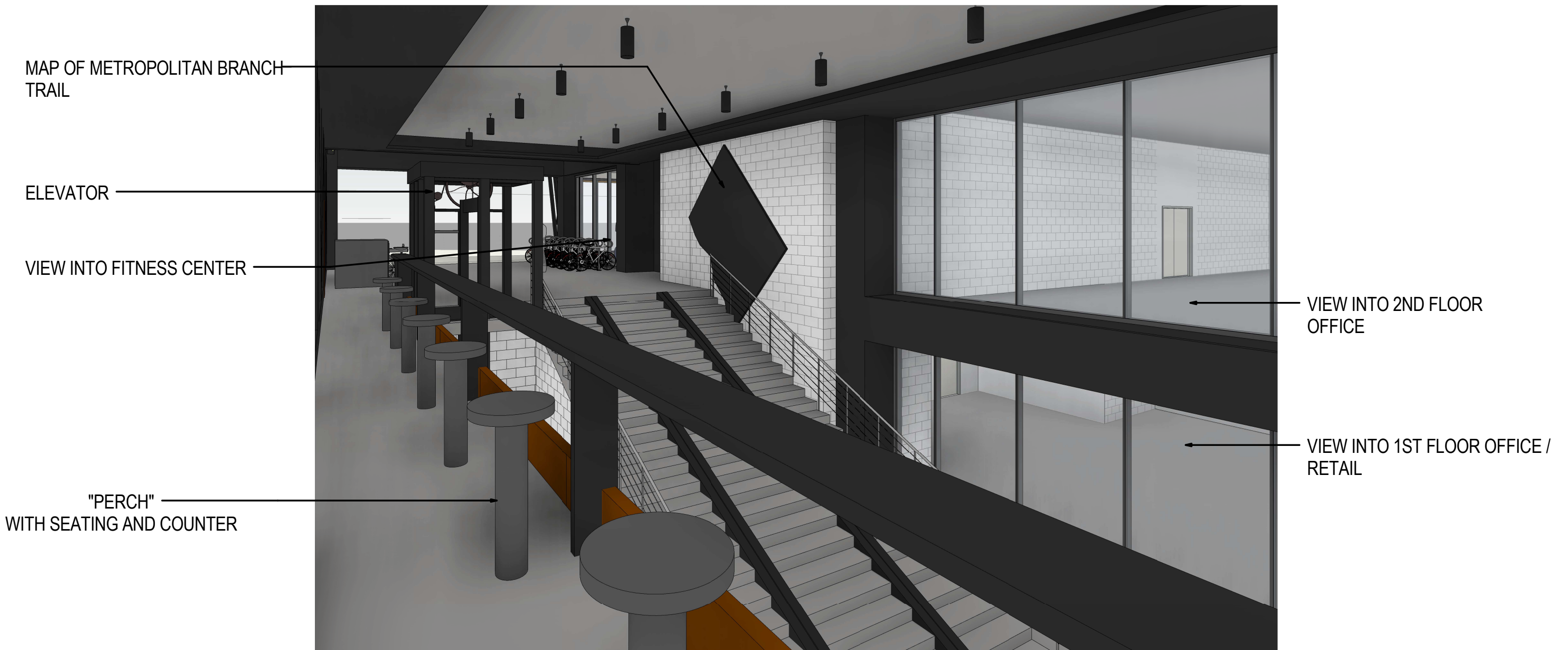
(PLAZA)

(TRAIL)

LEVEL 1
EL: 63'-6"

LEVEL 2
EL: 75'-3"

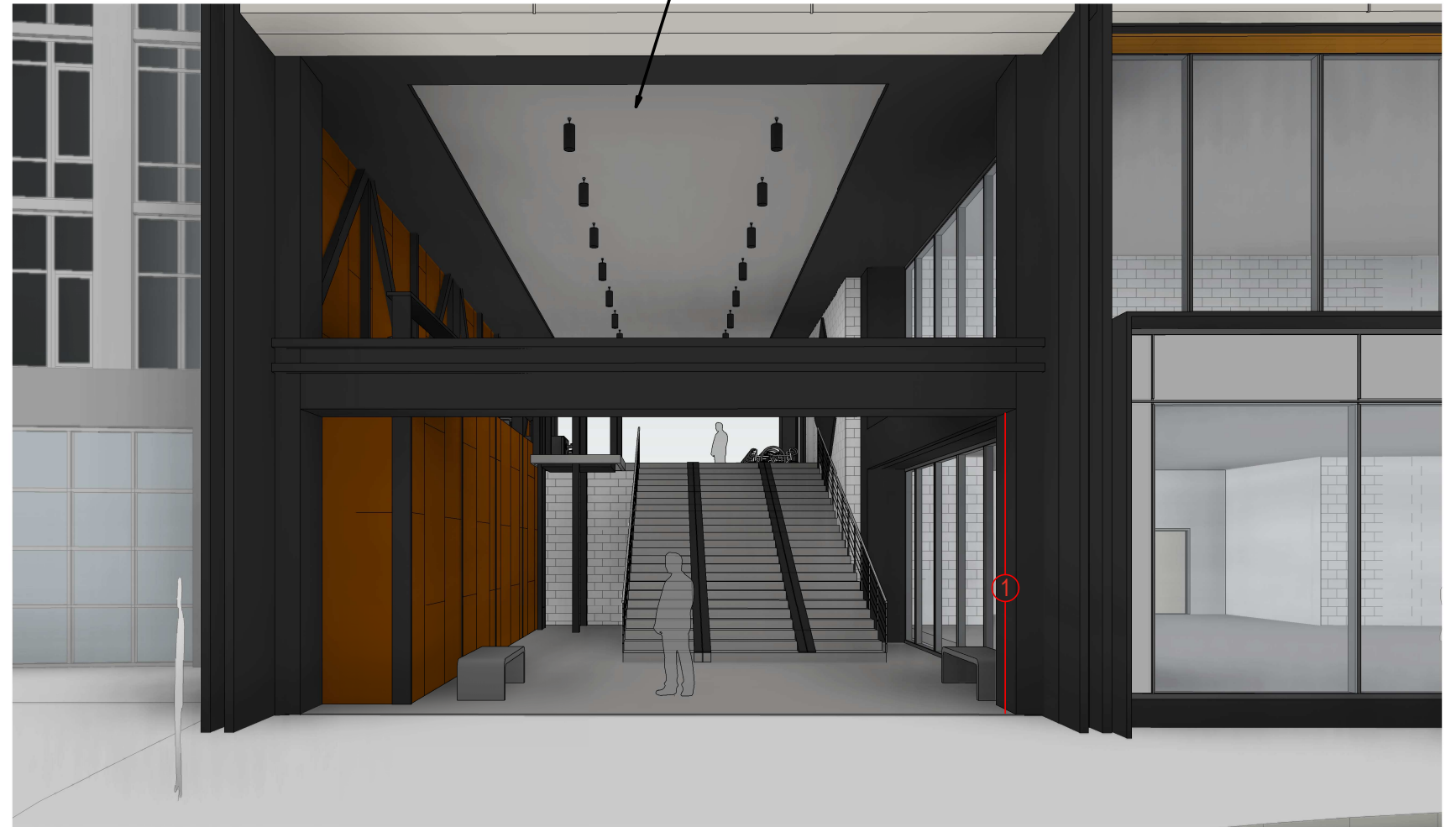
Stairs shown at 5.5" risers and 15" treads



VIEW 1 - "PERCH"



VIEW 2
TRAIL SIDE



VIEW 3
PLAZA SIDE



① Security Gate - When open, gate will be full concealed within the architectural housing spanning the opening.