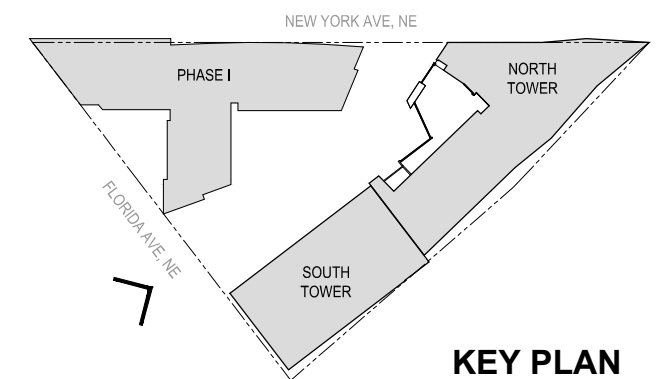




Notes:

1. Applicant requests the flexibility to vary the final selection of the exterior materials within the color ranges and material types (maintaining the same general level of quality) proposed, based on availability at the time of construction and further project design.
2. Refer to sheets A-109, A-110, A-217, and A-311 for additional signage and material information

© 2014 SK+I Architectural Design Group, LLC.



MRP | REALTY

Washington Gateway | Washington, DC

SK+I
ARCHITECTURE

Renderings - View from Plaza

March 6, 2017 | **A-001**

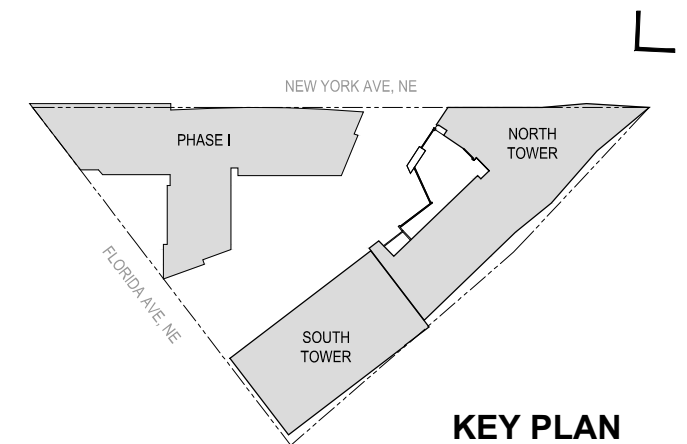
ZONING COMMISSION
District of Columbia
CASE NO.06-14D
EXHIBIT NO.46A3



Notes:

1. Applicant requests the flexibility to vary the final selection of the exterior materials within the color ranges and material types (maintaining the same general level of quality) proposed, based on availability at the time of construction and further project design.
2. Refer to sheets A-109, A-110, A-217, and A-311 for additional signage and material information

© 2014 SK+I Architectural Design Group, LLC.

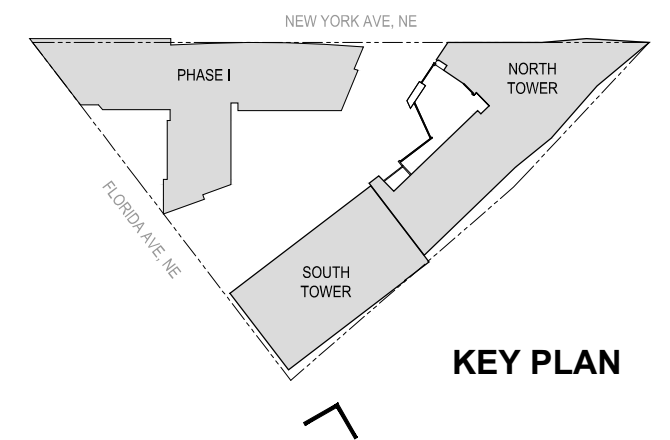




Notes:

1. Applicant requests the flexibility to vary the final selection of the exterior materials within the color ranges and material types (maintaining the same general level of quality) proposed, based on availability at the time of construction and further project design.
2. Refer to sheets A-109, A-110, A-217, and A-311 for additional signage and material information

© 2014 SK+I Architectural Design Group, LLC.



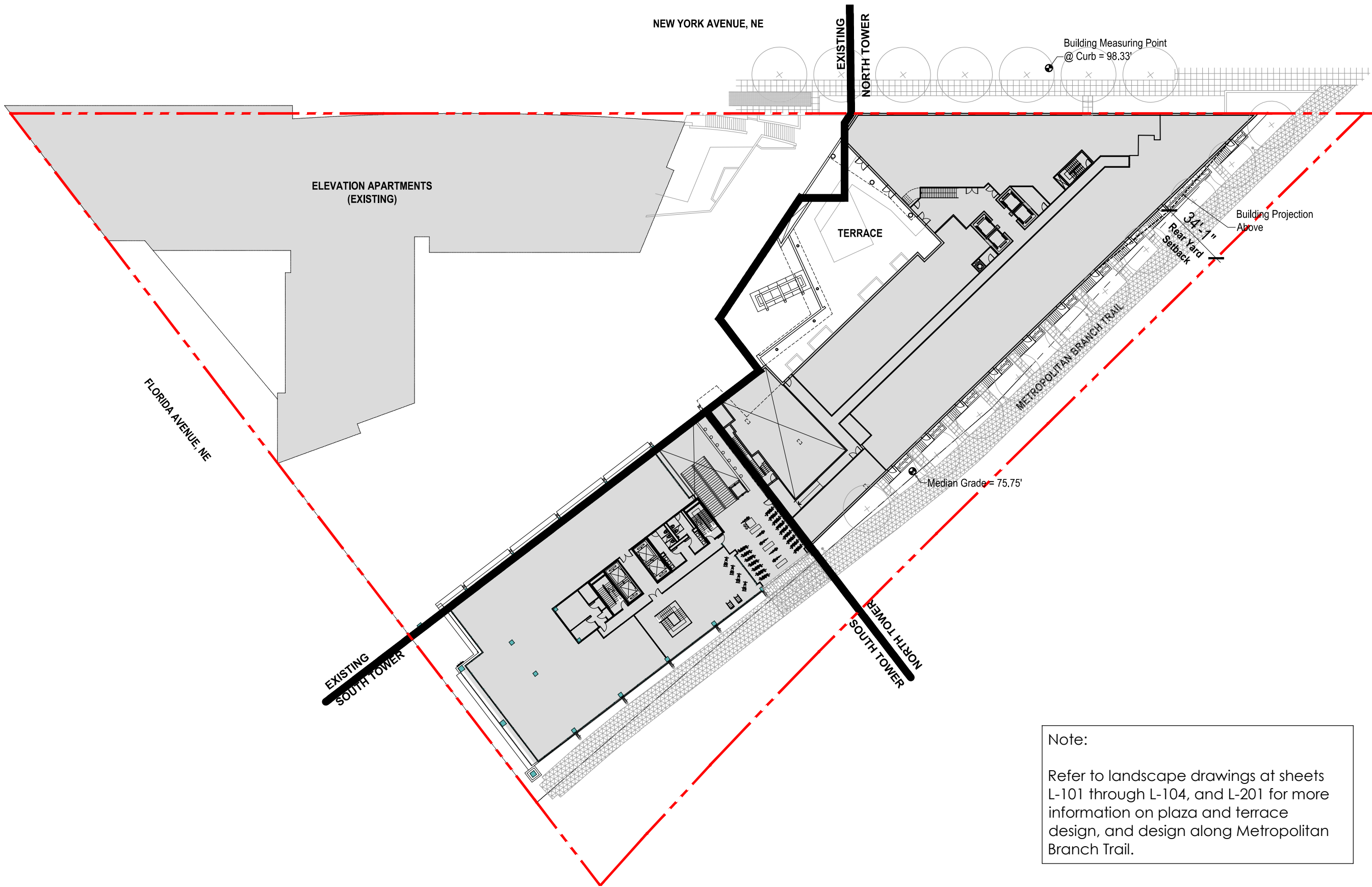
MRP | REALTY

Washington Gateway | Washington, DC

SK+I
ARCHITECTURE

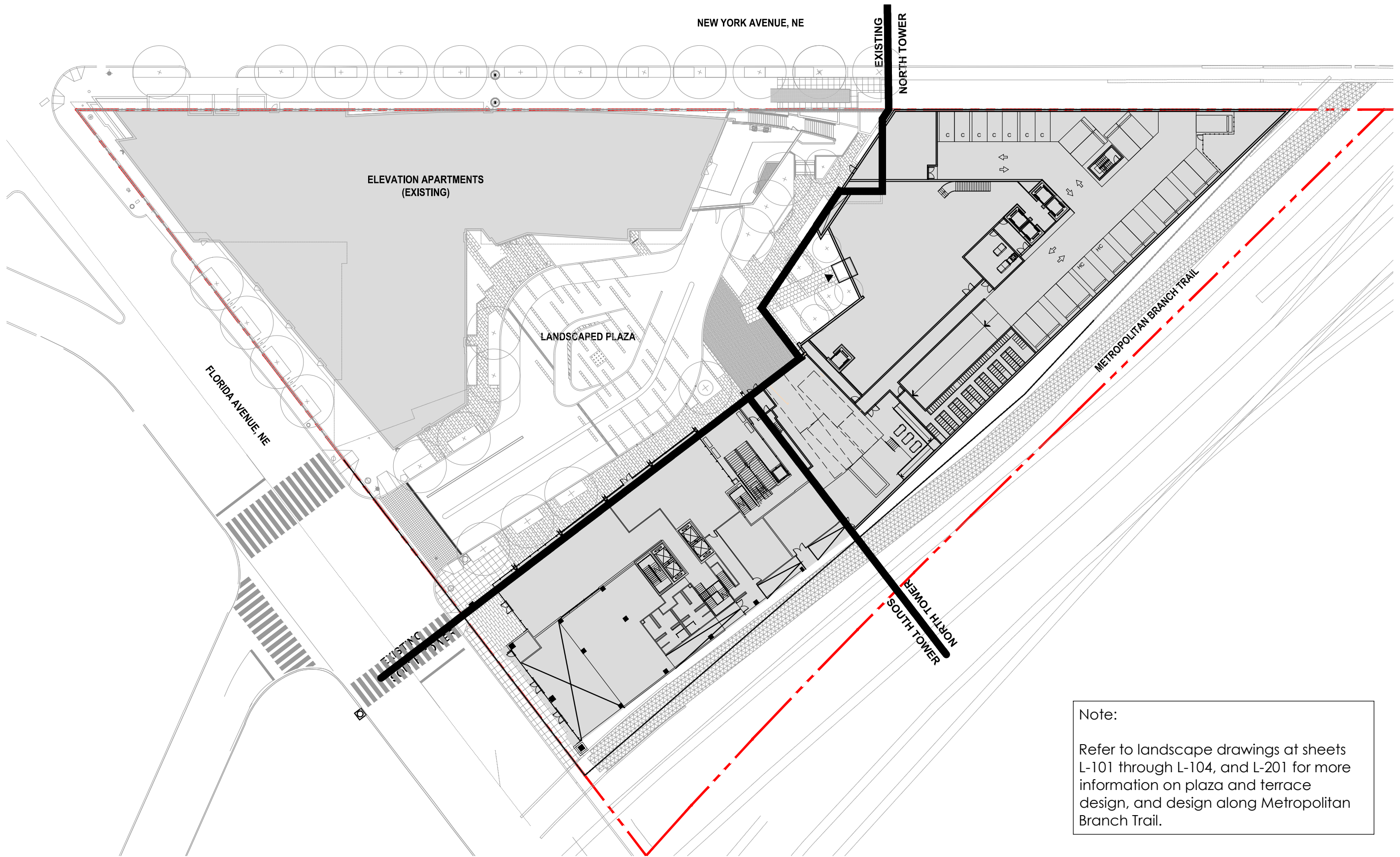
Renderings - View from Florida Avenue

March 6, 2017 | **A-003**



Note:
 Refer to landscape drawings at sheets L-101 through L-104, and L-201 for more information on plaza and terrace design, and design along Metropolitan Branch Trail.





ELEVATION APARTMENTS
(EXISTING)

LANDSCAPED PLAZA

FLORIDA AVENUE, NE

NEW YORK AVENUE, NE

EXISTING
NORTH TOWER

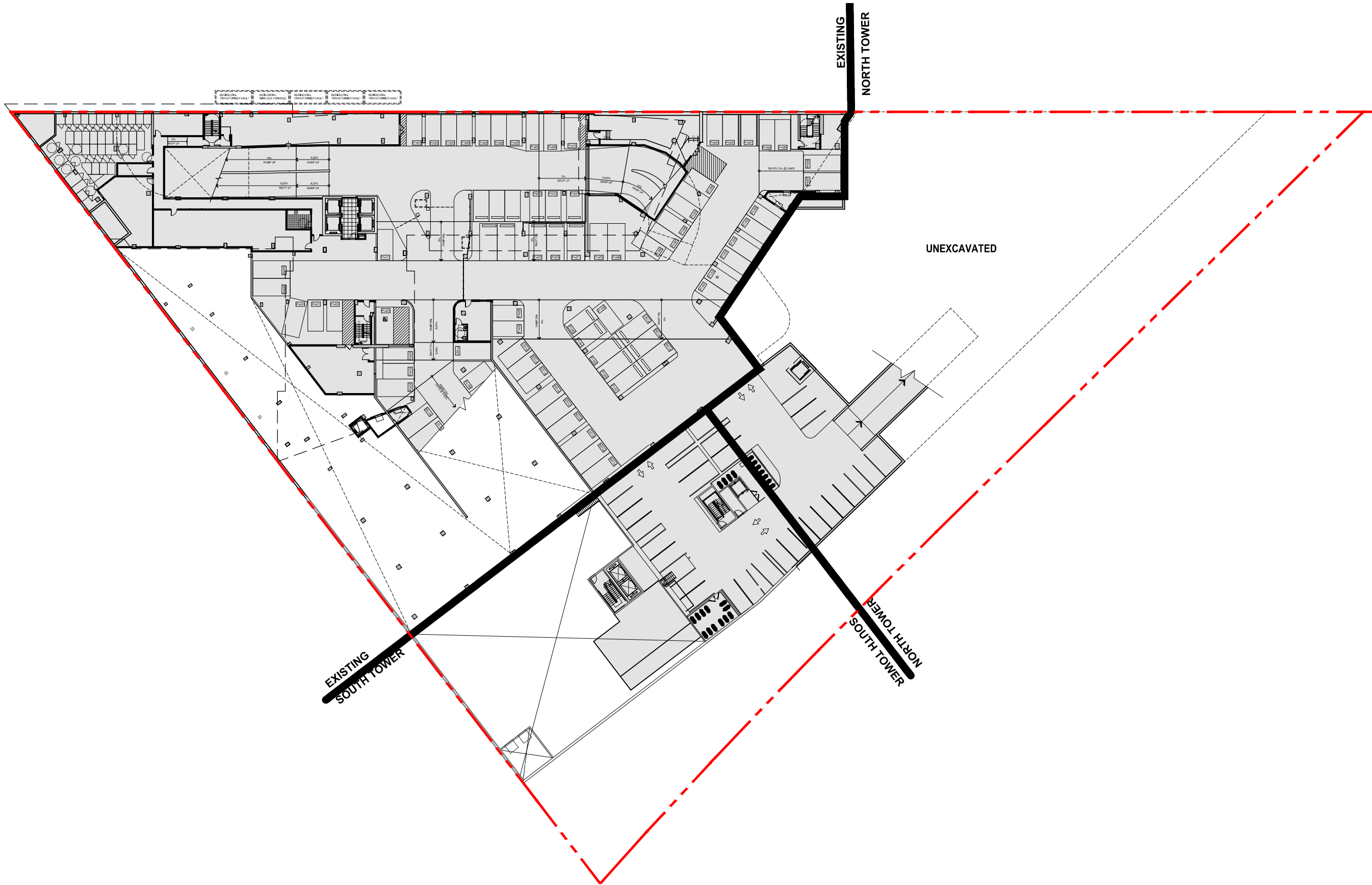
METROPOLITAN BRANCH TRAIL

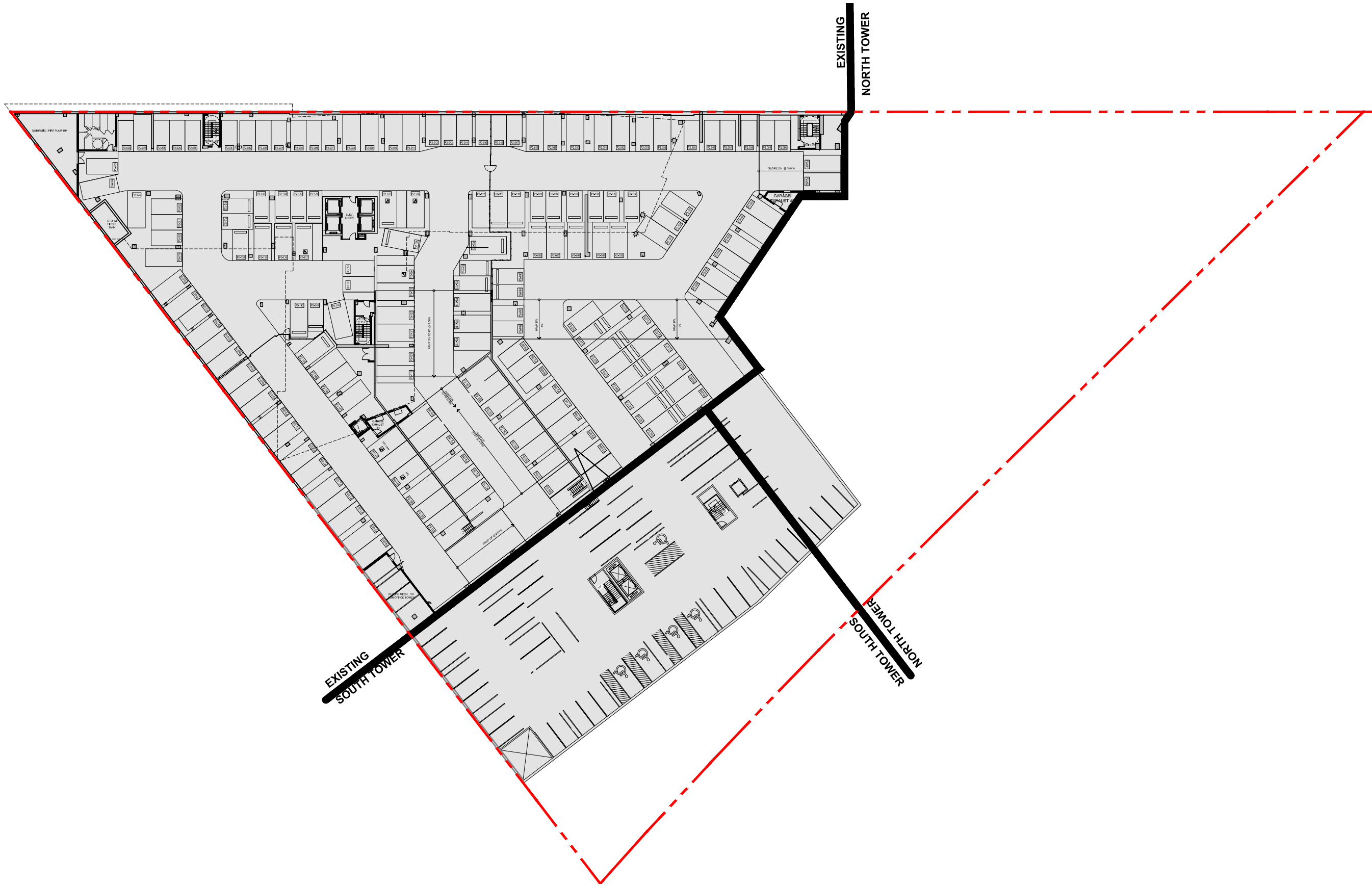
EXISTING
NORTH TOWER

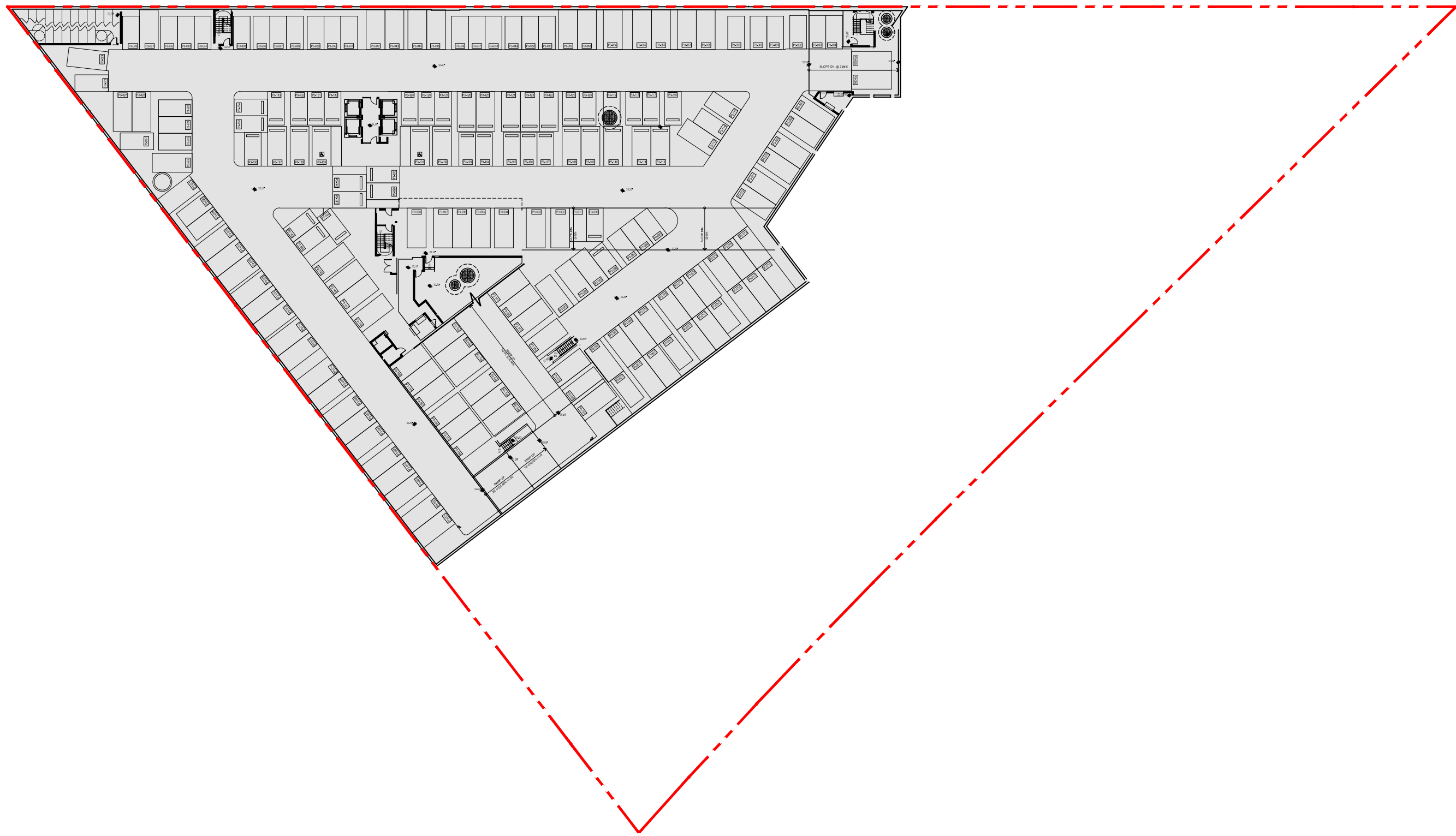
EXISTING
NORTH TOWER

Note:
Refer to landscape drawings at sheets L-101 through L-104, and L-201 for more information on plaza and terrace design, and design along Metropolitan Branch Trail.





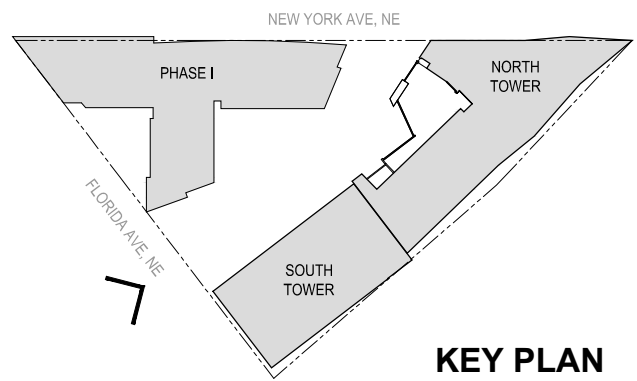






Notes:

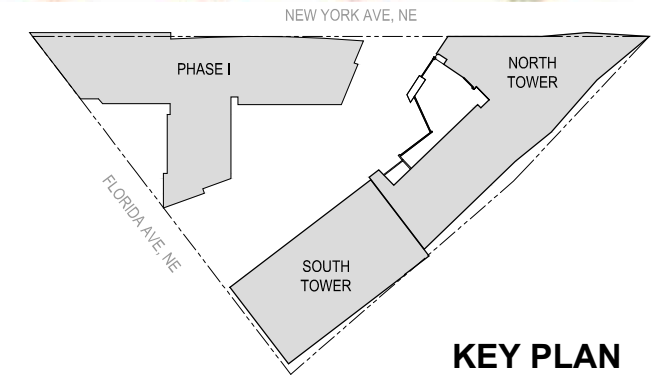
1. Applicant requests the flexibility to vary the final selection of the exterior materials within the color ranges and material types (maintaining the same general level of quality) proposed, based on availability at the time of construction and further project design.
2. Refer to sheets A-109, A-110, A-217, and A-311 for additional signage and material information





Notes:

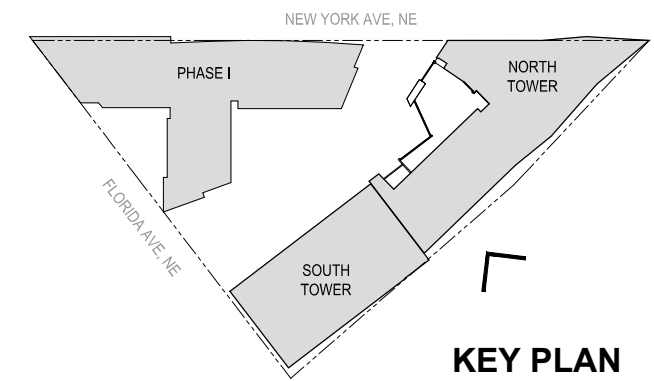
1. Applicant requests the flexibility to vary the final selection of the exterior materials within the color ranges and material types (maintaining the same general level of quality) proposed, based on availability at the time of construction and further project design.
2. Refer to sheets A-109, A-110, A-217, and A-311 for additional signage and material information





Notes:

1. Applicant requests the flexibility to vary the final selection of the exterior materials within the color ranges and material types (maintaining the same general level of quality) proposed, based on availability at the time of construction and further project design.
2. Refer to sheets A-109, A-110, A-217, and A-311 for additional signage and material information



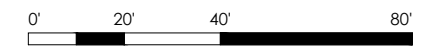
MRP | REALTY

Washington Gateway | Washington, DC

March 6, 2017 | A-107



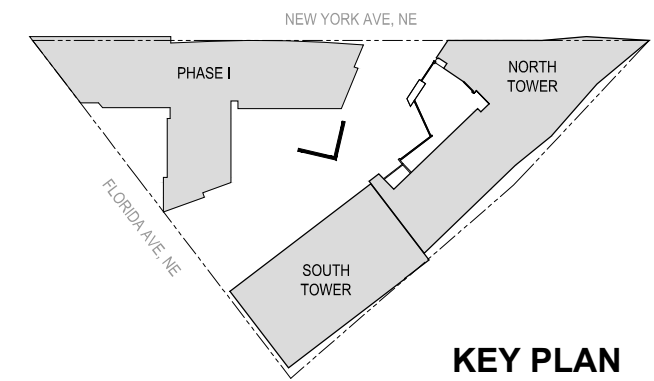
Architecture - Overall - Proposed East Elevation





Notes:

1. Applicant requests the flexibility to vary the final selection of the exterior materials within the color ranges and material types (maintaining the same general level of quality) proposed, based on availability at the time of construction and further project design.
2. Refer to sheets A-109, A-110, A-217, and A-311 for additional signage and material information



MRP | REALTY

Washington Gateway | Washington, DC

March 6, 2017 | A-108



Architecture - Overall - Proposed West Elevation

