



View from New York Avenue

- 4
- 3
- 5
- 4
- 6
- 1
- 2



North and West Elevations

- 6
- 3
- 7
- 5
- 4
- 1
- 2



East Elevation

- 4
- 5
- 6
- 4
- 3
- 1



South Elevation



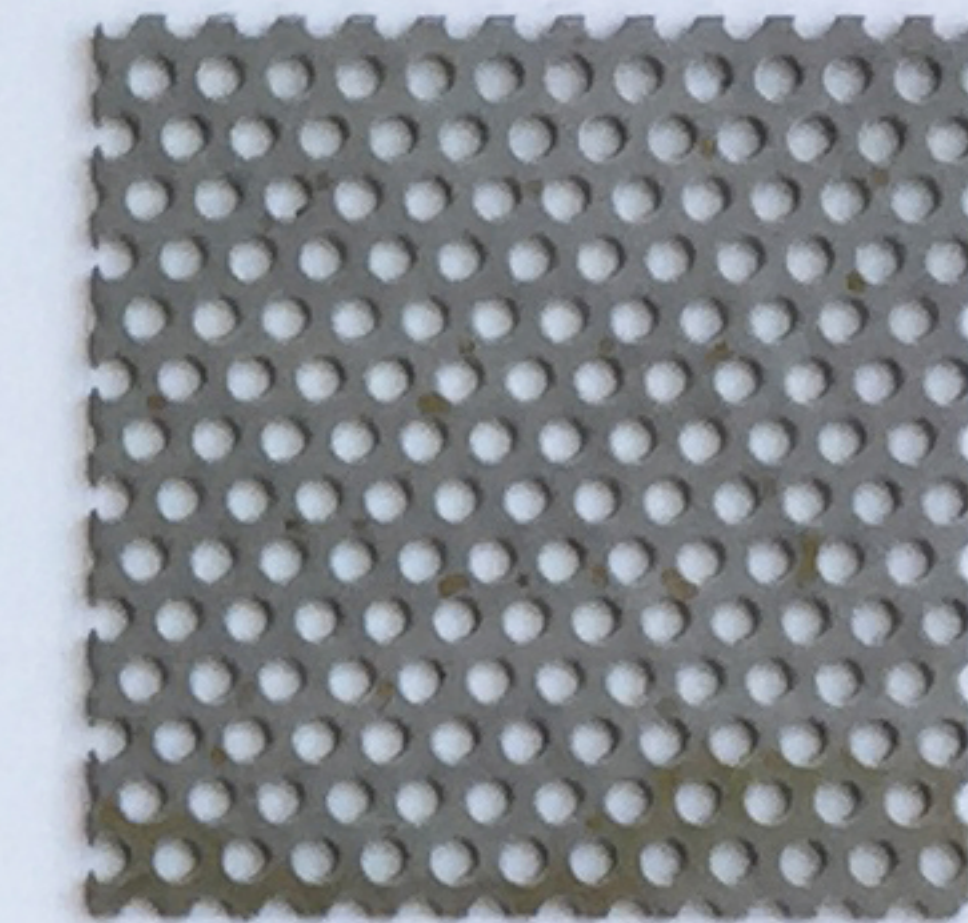
window glazing

5



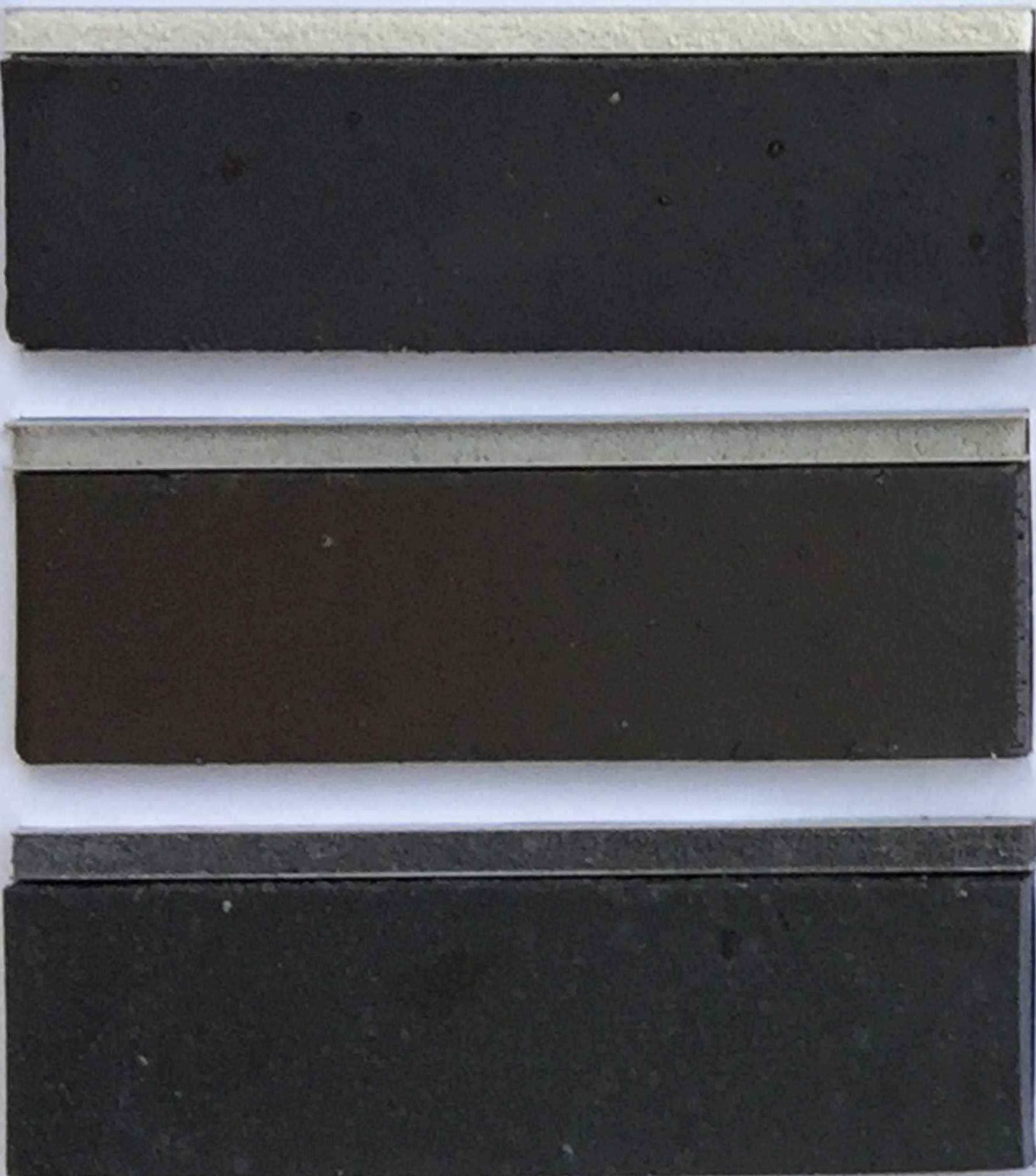
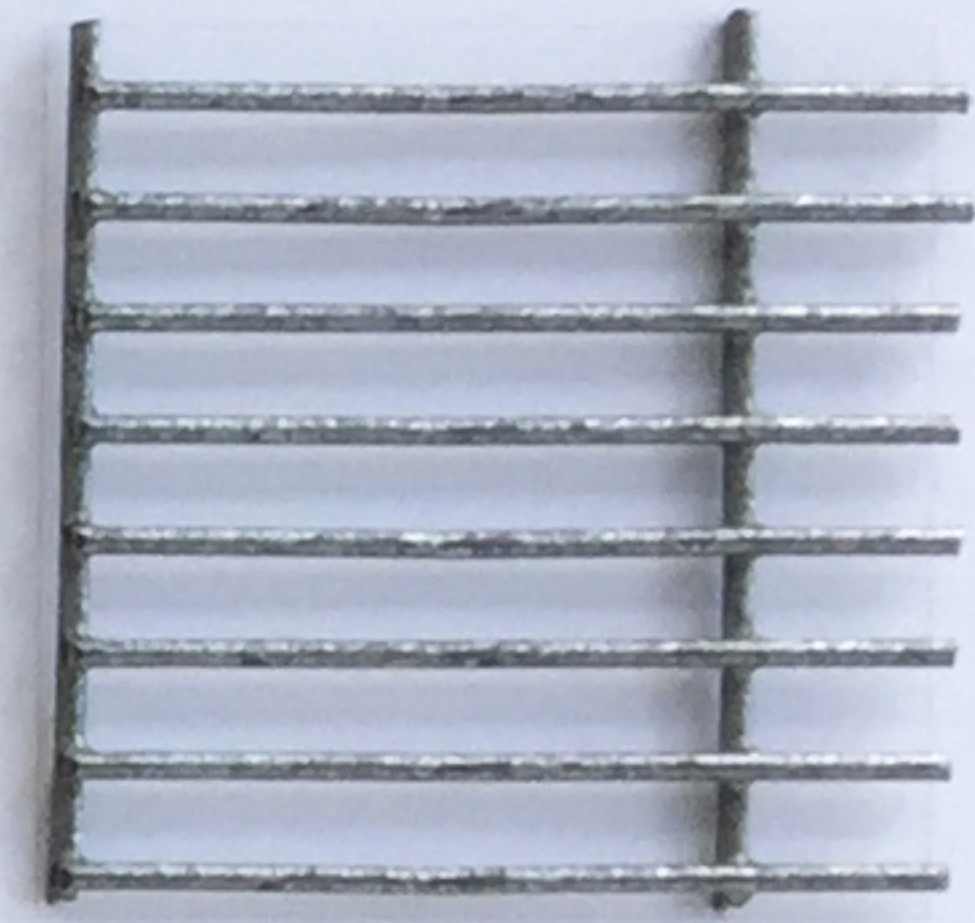
frosted glass railing

6



metal railing range

7



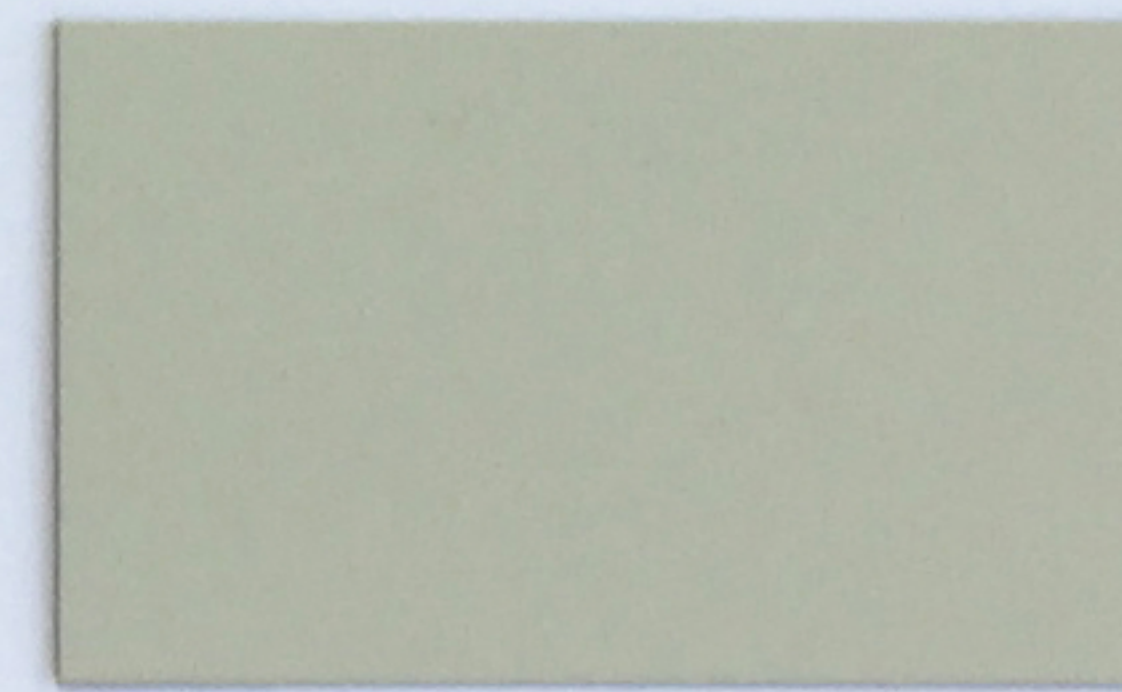
field brick and mortar range

1



accent brick and mortar range

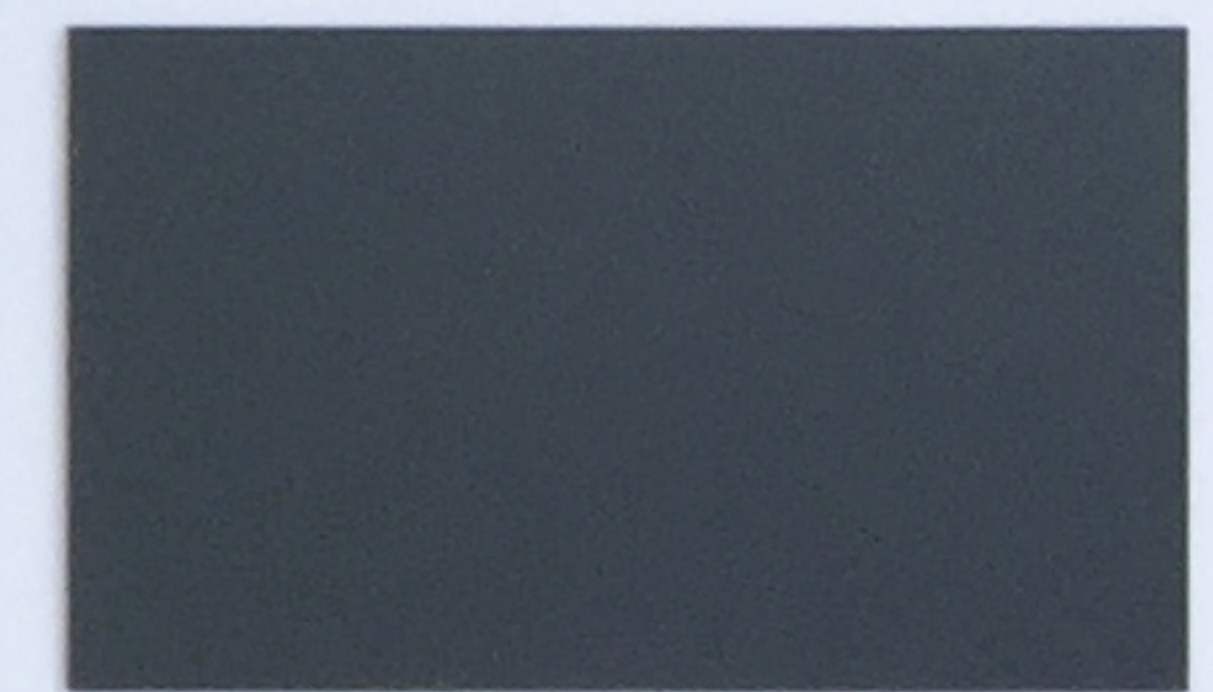
2



3



composite metal panel range

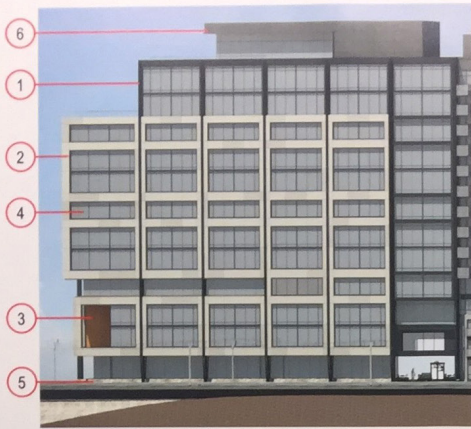


4



(example of corrugated panel)

corrugated metal panel range
(window frame to match)



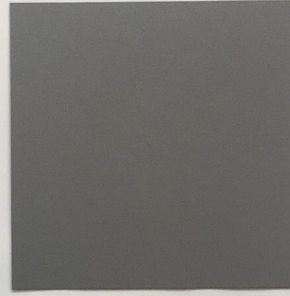
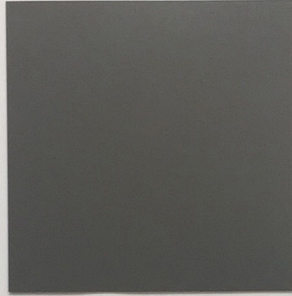
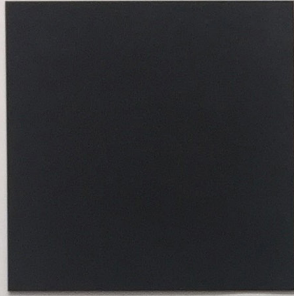
East (Tracks Side)



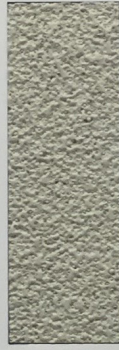
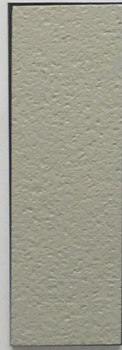
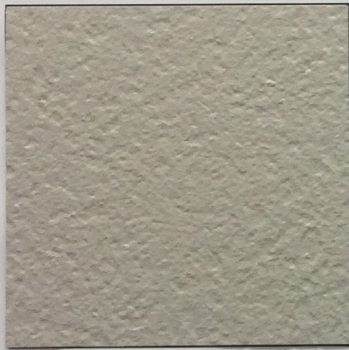
South (Florida Avenue)



West (Plaza Side)



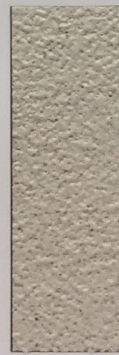
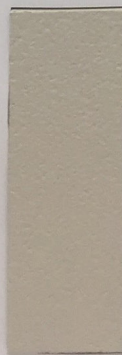
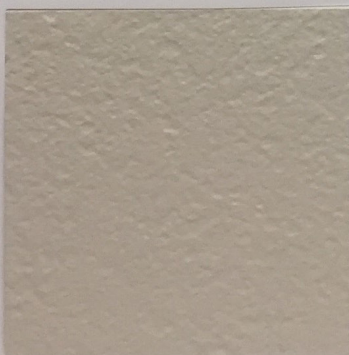
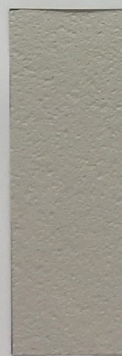
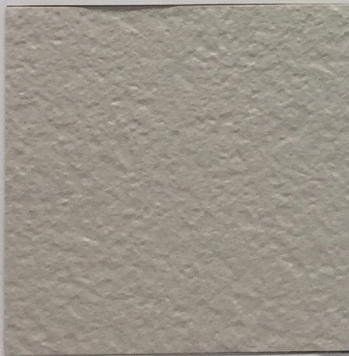
1 Metal Panels & Mullions
(Main Facades)

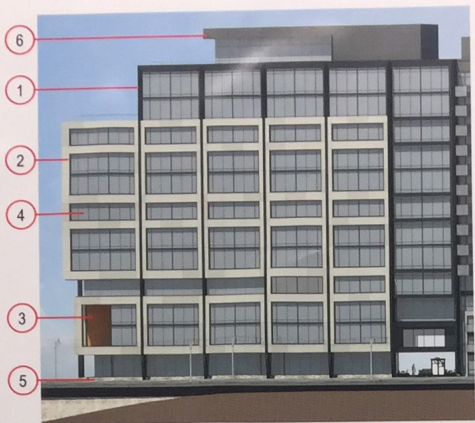


2 Concrete
Facade Panels
(Main Facades)



3 Synthetic Wood
Panels (Loggias
and Soffits)





East (Tracks Side)

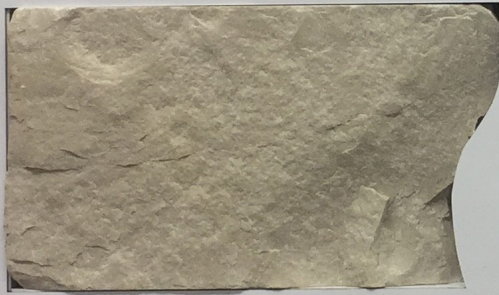
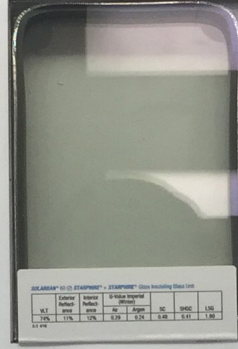
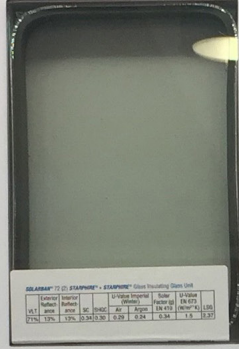
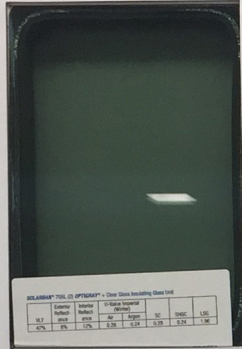


South (Florida Avenue)

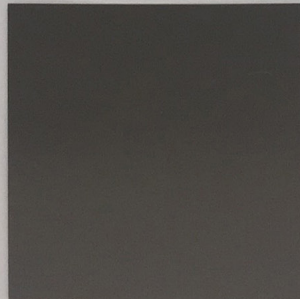
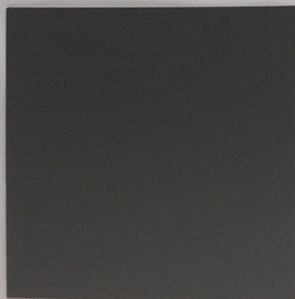
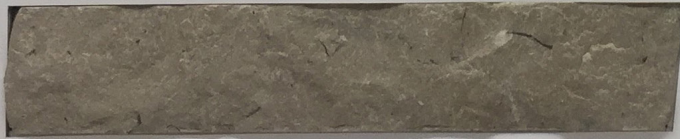


West (Plaza Side)

4 Glass



5 Stone (Florida Ave. - Ground Floor Base)



6 Metal Panels (Penthouse)