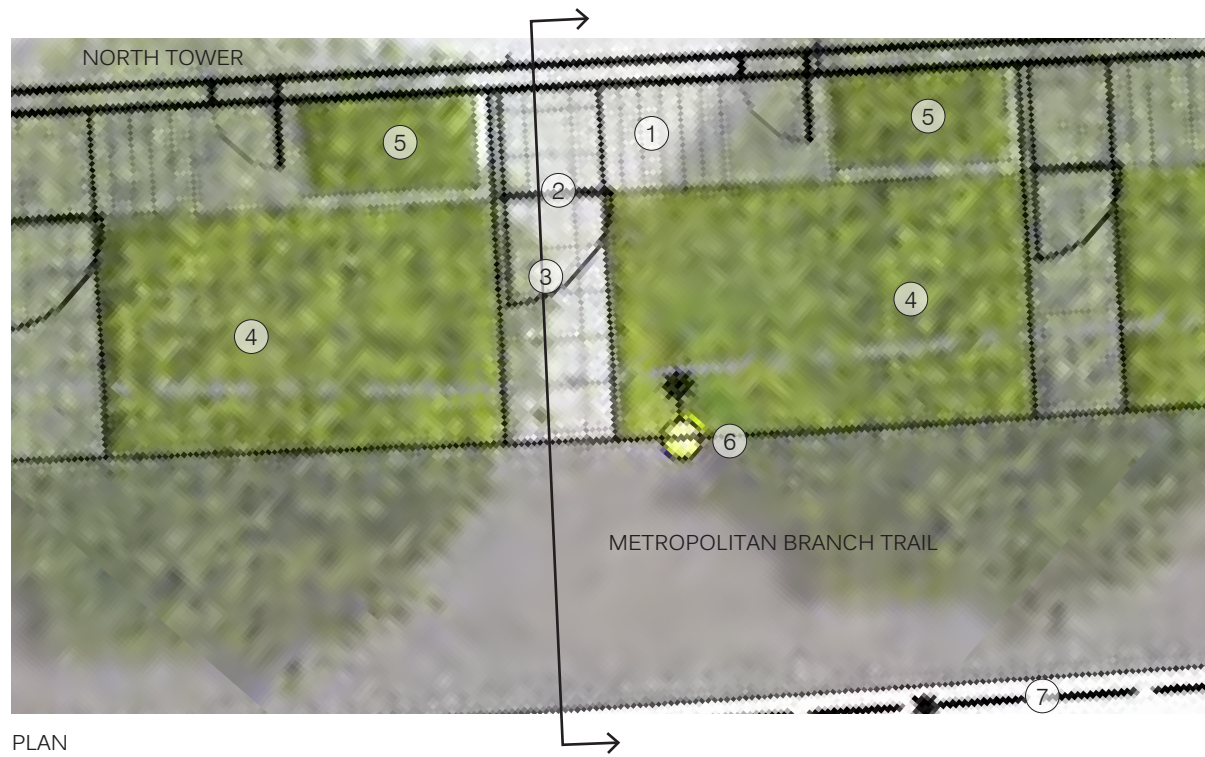


NEW YORK AVE NE



- ① NORTH TOWER
- ② LAWN
- ③ RAIL CORRIDOR
- ④ METROPOLITAN BRANCH TRAIL
- ⑤ NORTH TOWER 2ND FLOOR TERRACE
- ⑥ SERVICE DRIVE
- ⑦ 8' WIDE TRAIL CONNECTION  
(ELEV. 63'-0" AT PLAZA;  
ELEV. 76'-0" AT MBT)
- ⑧ RAMP TO DRIVEWAY
- ⑨ DC STANDARD CONCRETE PAVING
- ⑩ SPECIAL PAVING
- ⑪ BIKE RACKS
- ⑫ EXISTING NY AVE STAIR CONNECTION
- ⑬ MBT POLE LIGHT, TYP.
- ⑭ EMERGENCY CALL BOX



PLAN

- ① STOOP  
LANDING = 5 X 5 FT  
TREADS VARY IN NUMBER FROM 5 - 9
- ② GATE
- ③ CONCRETE WALK  
WIDTH VARIES 4 - 5 FT  
LENGTH VARIES 13.5 - 16 FT
- ④ LANDSCAPE BUFFER  
WIDTH VARIES 18 - 19 FT  
LENGTH VARIES 8 - 11 FT
- ⑤ RAISED PLANTER  
WIDTH VARIES 5 - 7.75 FT  
LENGTH VARIES 4.1 - 4.3 FT
- ⑥ MBT POLE LIGHT
- ⑦ EXISTING CHAIN LINK FENCE



METAL RAILING WITH MESH INFILL



SECTION



PERSPECTIVE OF NORTH TOWER, LOOKING NORTHEAST ALONG MBT

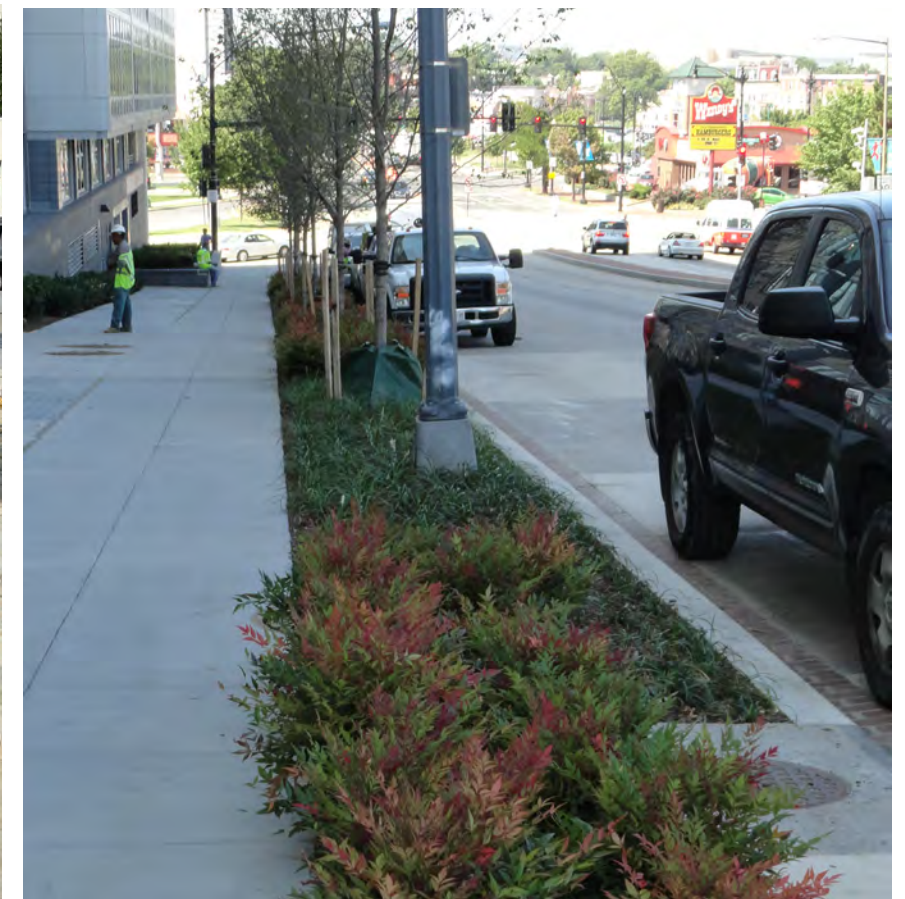




Plaza and sidewalk paving



Sidewalk paving



NY Ave Streetscape



Landscape Forms Stay Bench



Domus Series Pole Light for MBT



South Tower Building Light along MBT

Note: Building lights along MBT are shown to provide general character of light fixtures and are not necessarily the final selection.