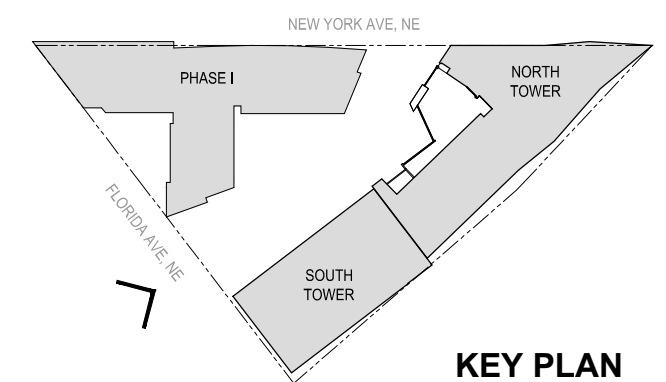




Notes:

1. Applicant requests the flexibility to vary the final selection of the exterior materials within the color ranges and material types (maintaining the same general level of quality) proposed, based on availability at the time of construction and further project design.
2. Refer to sheets A-109, A-110, A-217, and A-311 for additional signage and material information

© 2014 SK+I Architectural Design Group, LLC.



MRP | REALTY

Washington Gateway | Washington, DC

December 30, 2016 | A-001

**SK+I**  
ARCHITECTURE

Renderings - View from Plaza

ZONING COMMISSION  
District of Columbia  
CASE NO.06-14D  
EXHIBIT NO.41A3





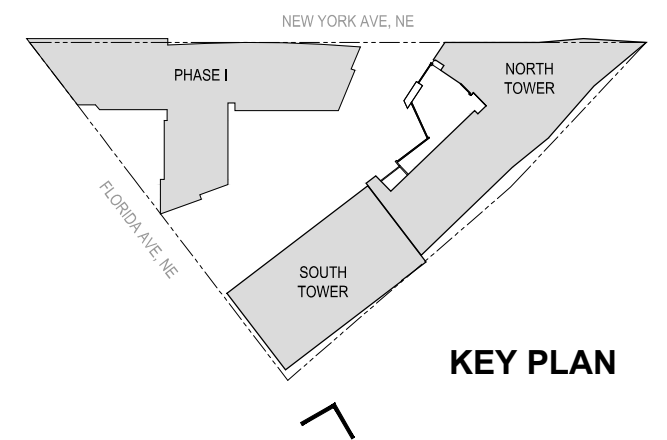




Notes:

1. Applicant requests the flexibility to vary the final selection of the exterior materials within the color ranges and material types (maintaining the same general level of quality) proposed, based on availability at the time of construction and further project design.
2. Refer to sheets A-109, A-110, A-217, and A-311 for additional signage and material information

© 2014 SK+I Architectural Design Group, LLC.



**KEY PLAN**

**MRP | REALTY**

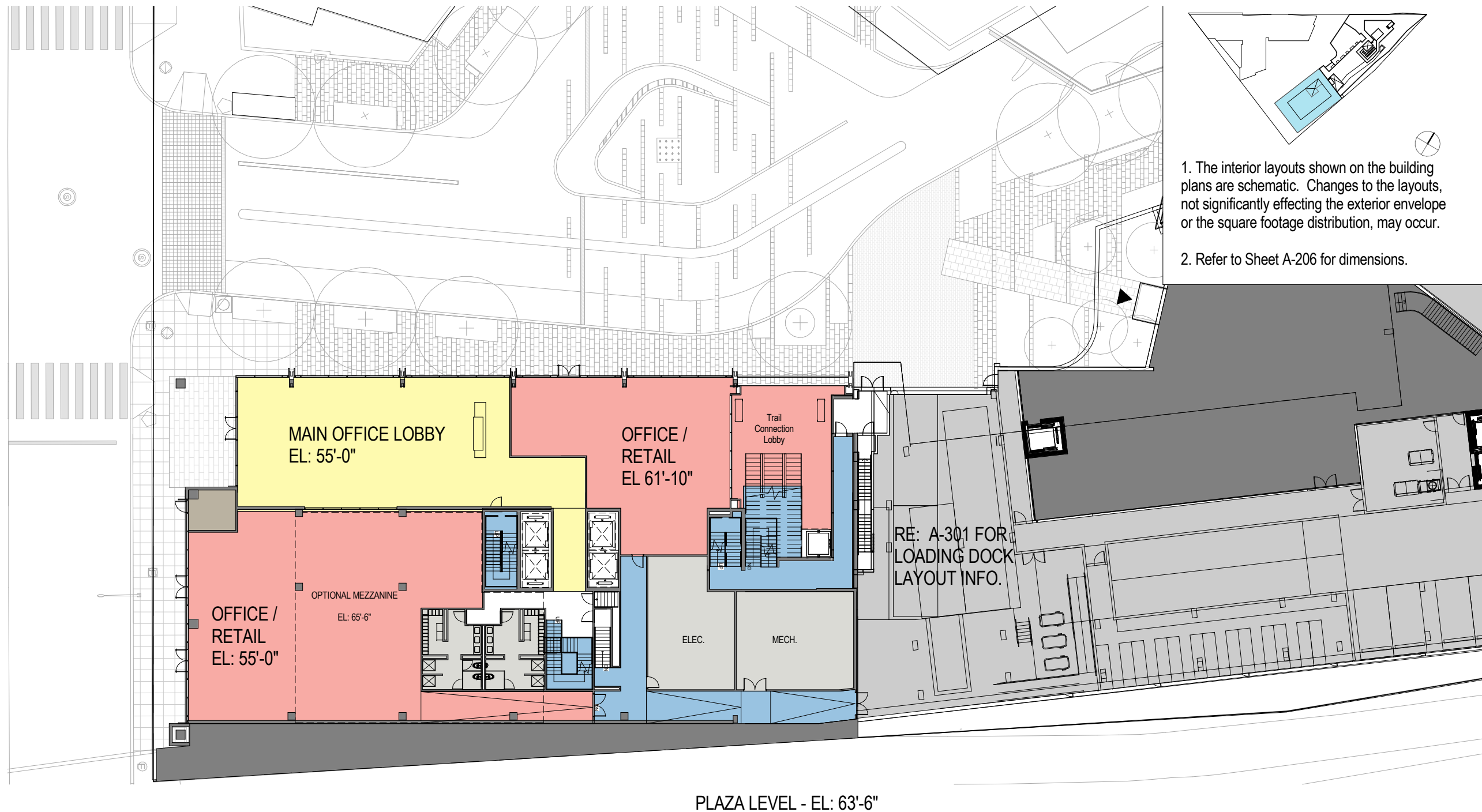
Washington Gateway | Washington, DC

**SK+I**  
ARCHITECTURE

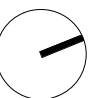
Renderings - View from Florida Avenue

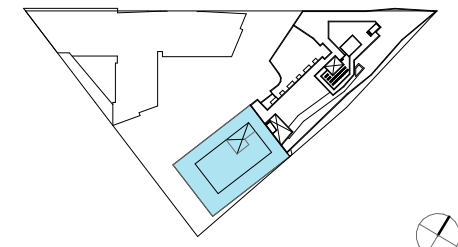
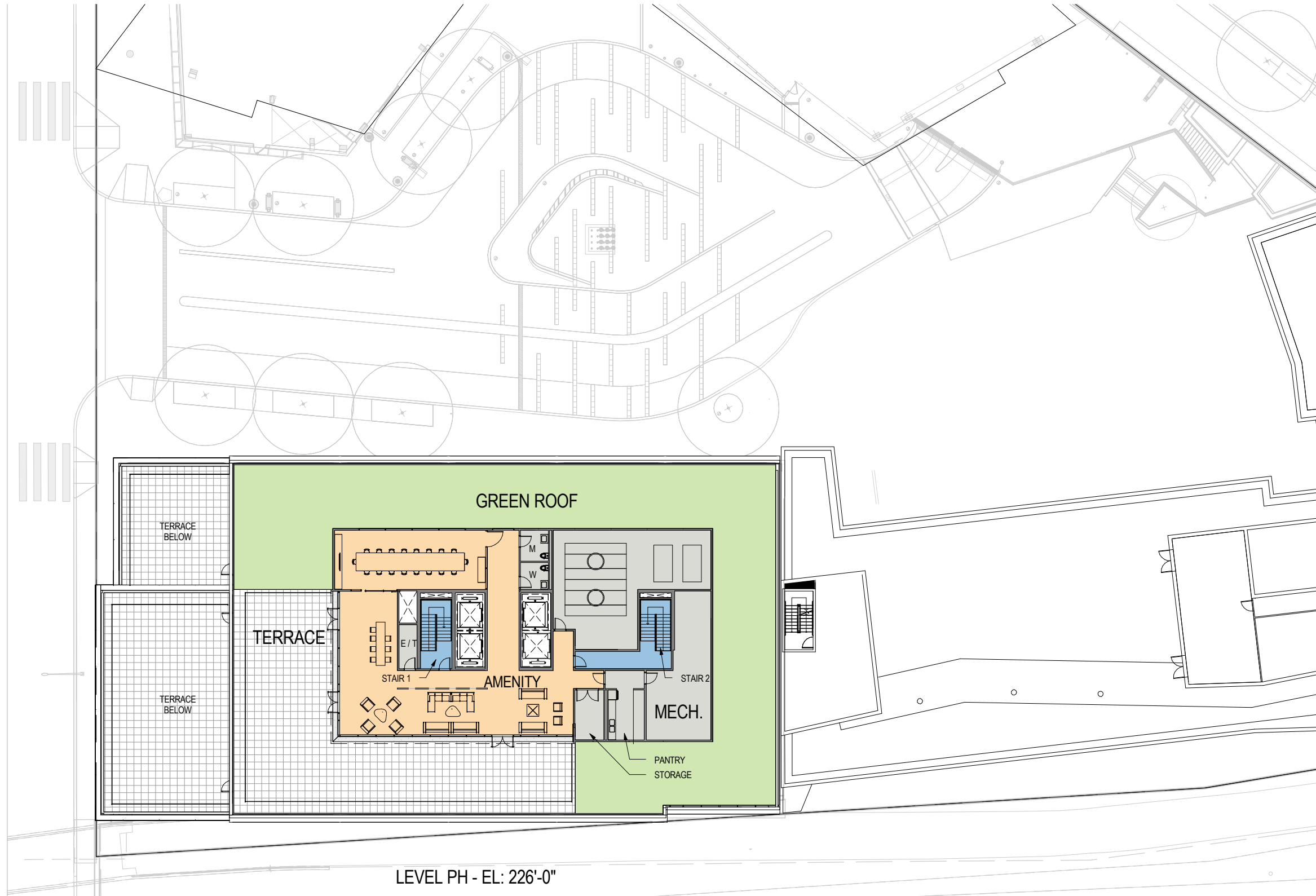
December 30, 2016 | A-003



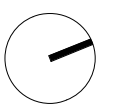


1. The interior layouts shown on the building plans are schematic. Changes to the layouts, not significantly affecting the exterior envelope or the square footage distribution, may occur.
2. Refer to Sheet A-206 for dimensions.





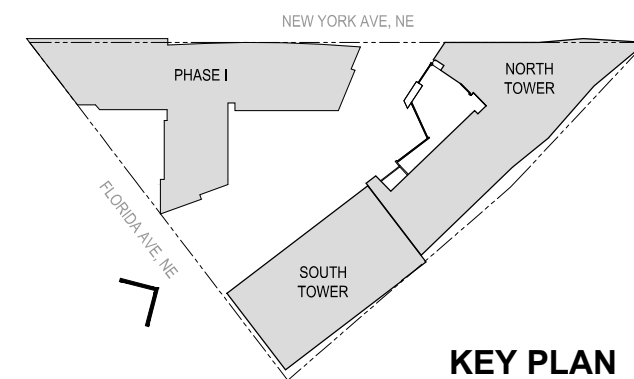
1. The interior layouts shown on the building plans are schematic. Changes to the layouts, not significantly affecting the exterior envelope or the square footage distribution, may occur.
2. Refer to Sheet A-206 for dimensions.





Notes:

1. Applicant requests the flexibility to vary the final selection of the exterior materials within the color ranges and material types (maintaining the same general level of quality) proposed, based on availability at the time of construction and further project design.
2. Refer to sheets A-109, A-110, A-217, and A-311 for additional signage and material information

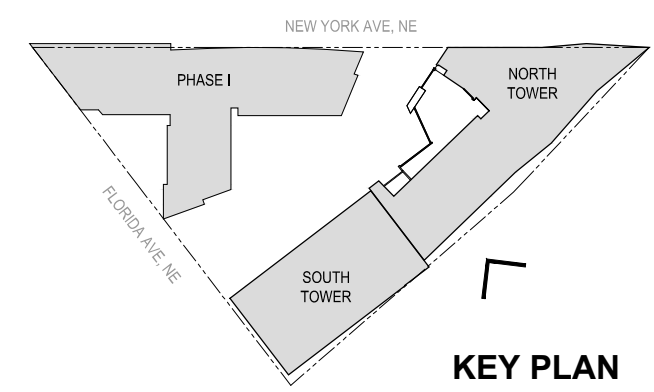






Notes:

1. Applicant requests the flexibility to vary the final selection of the exterior materials within the color ranges and material types (maintaining the same general level of quality) proposed, based on availability at the time of construction and further project design.
2. Refer to sheets A-109, A-110, A-217, and A-311 for additional signage and material information



MRP | REALTY

Washington Gateway | Washington, DC

December 30, 2016 | A-107



Architecture - Overall - Proposed East Elevation







Refer to A-106 for North Elevation

Notes:

1. Applicant requests the flexibility to vary the final selection of the exterior materials within the color ranges and material types (maintaining the same general level of quality) proposed, based on availability at the time of construction and further project design.
2. Refer to sheets A-109, A-110, A-217, and A-311 for additional signage and material information

