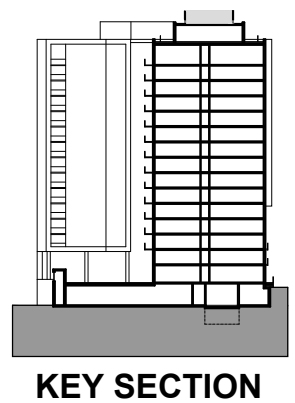
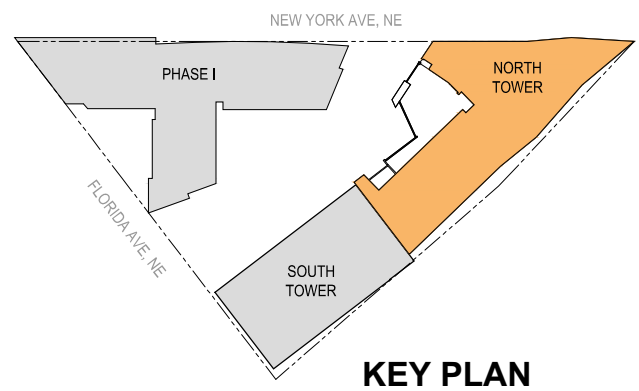


- Notes:
1. The interior and mechanical layouts shown of the building are schematic. Changes to the layouts and mechanical, not affecting the exterior envelope or the square footage distribution, may occur.
  2. Refer to A-200 sheets for information on the South Tower.
  3. Final rooftop design to be determined by mechanical system selection.
  4. Refer to landscape drawings for more information on roof design.
  5. Refer to A-111 for enlarged rooftop sections.



KEY PLAN

KEY SECTION

MRP | REALTY

Washington Gateway | Washington, DC

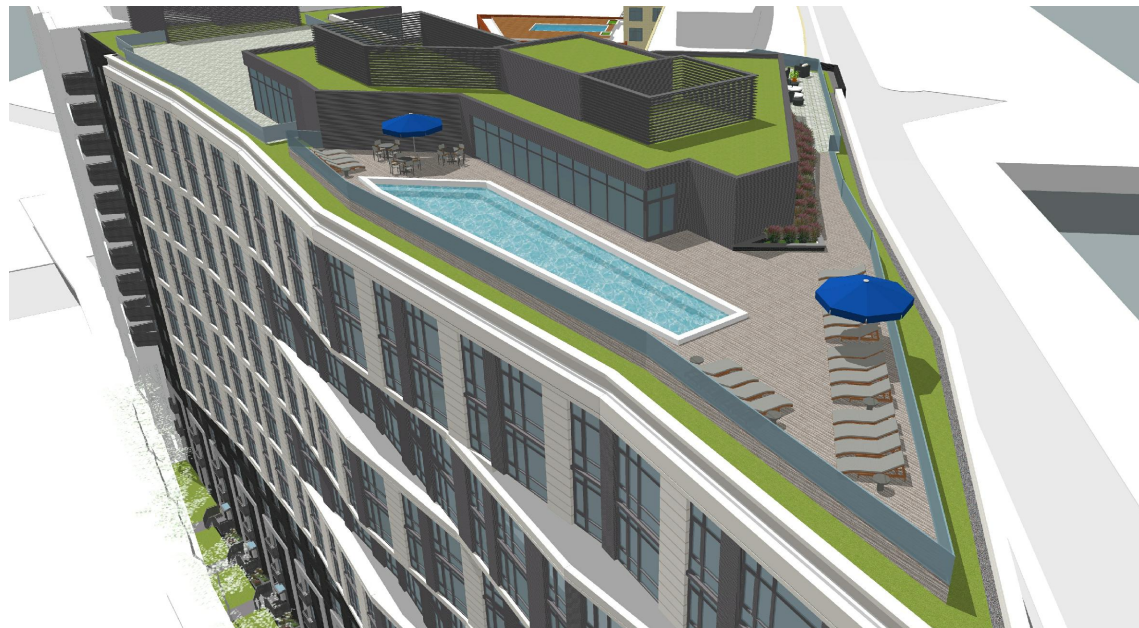
February 9, 2017 | A-308



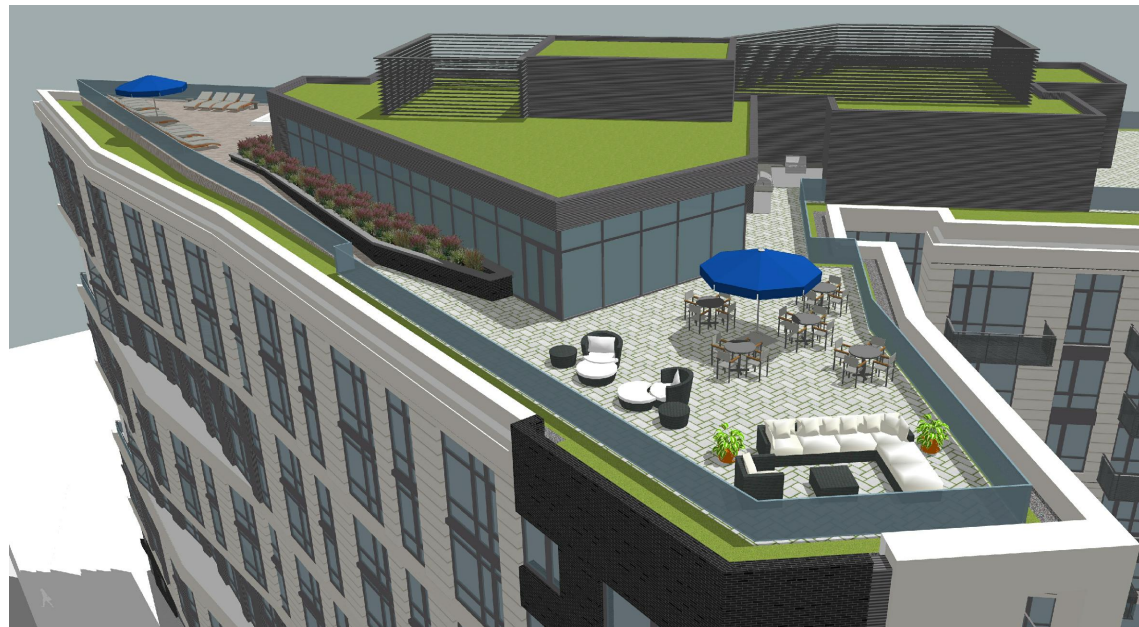
Architecture - North Tower - Roof Plan

0' 15' 30' 40'

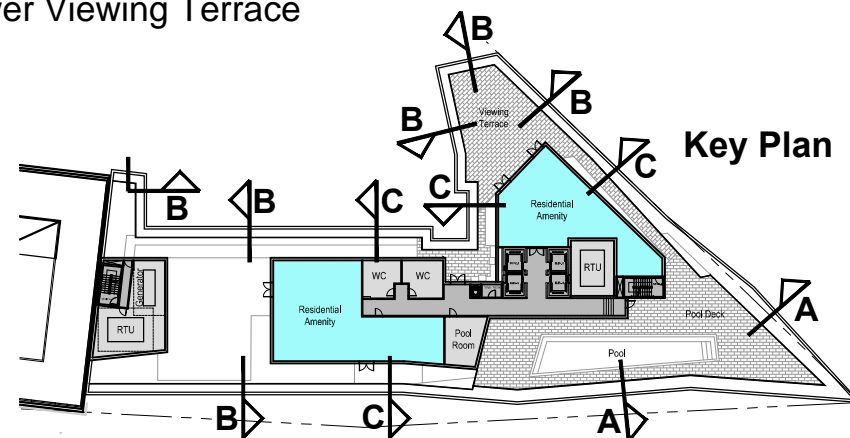
ZONING COMMISSION  
District of Columbia  
CASE NO.06-14D  
EXHIBIT NO.41A2



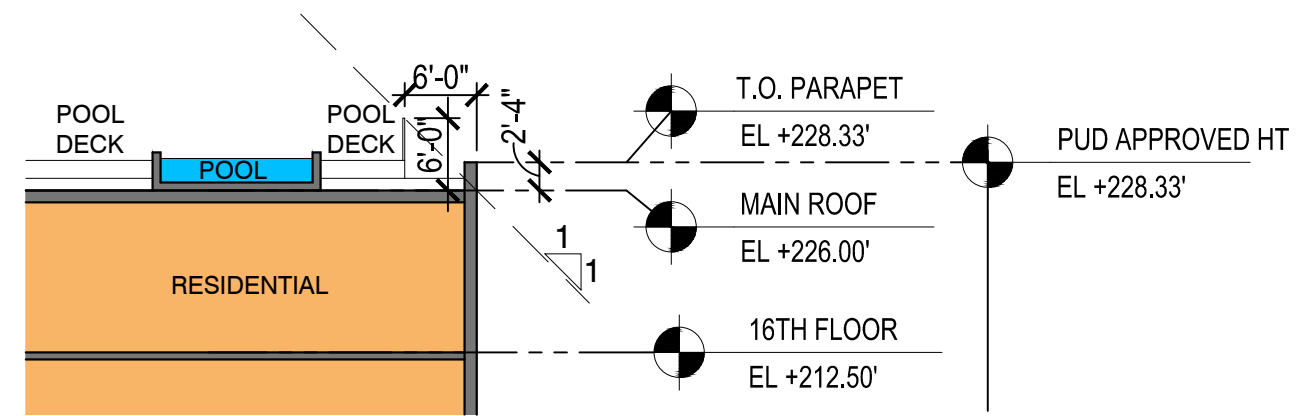
View of North Tower Pool Deck



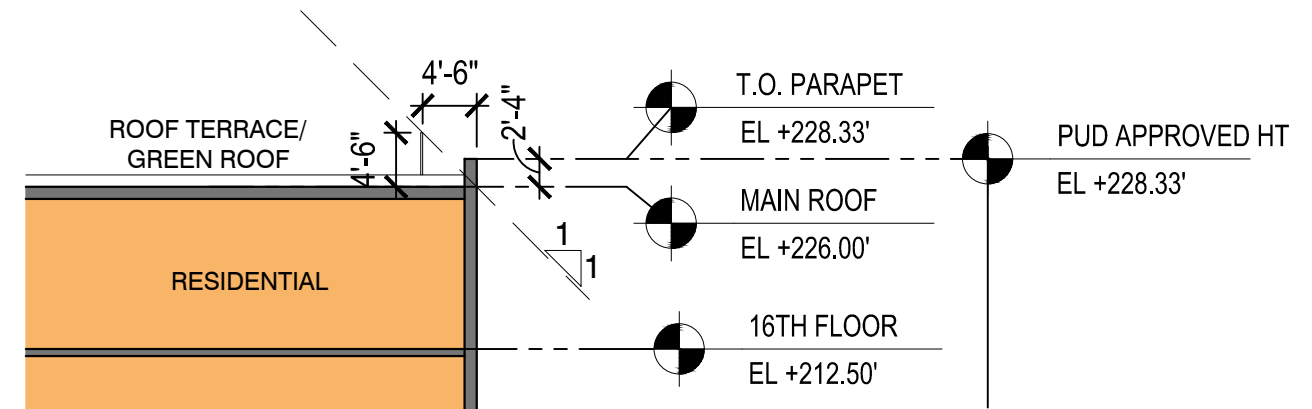
View of North Tower Viewing Terrace



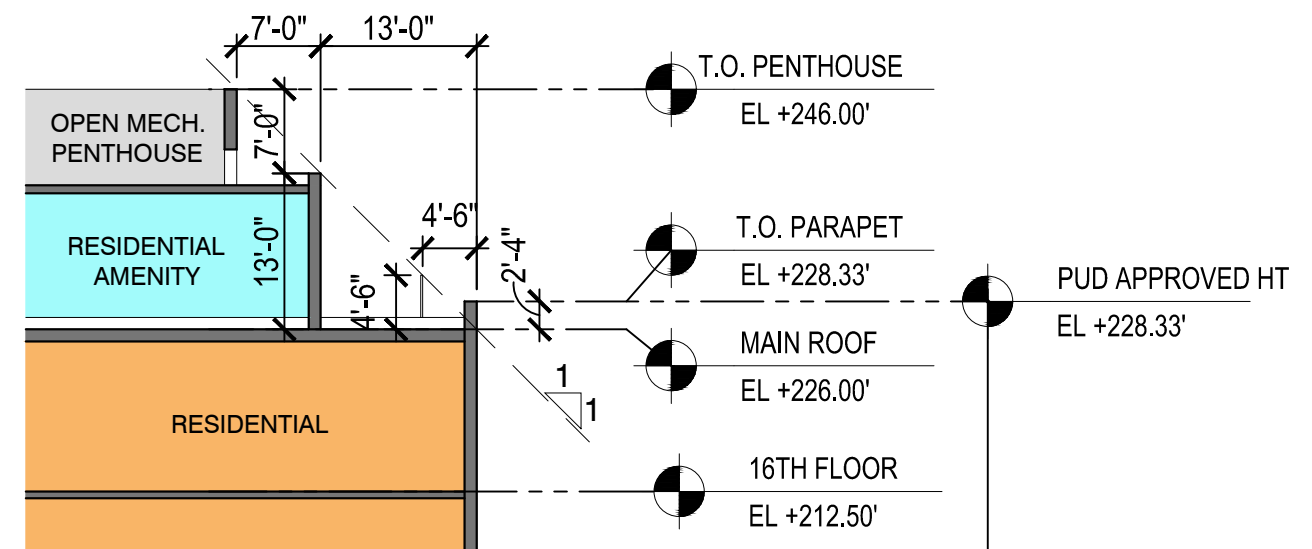
Key Plan



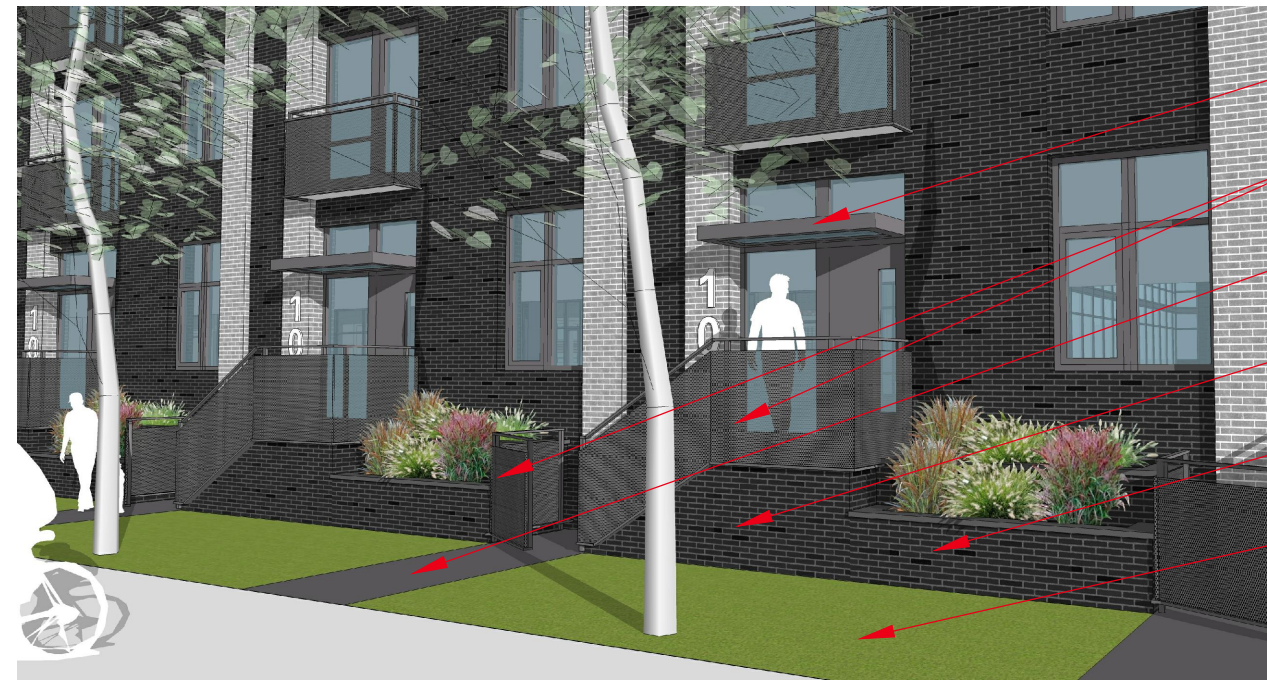
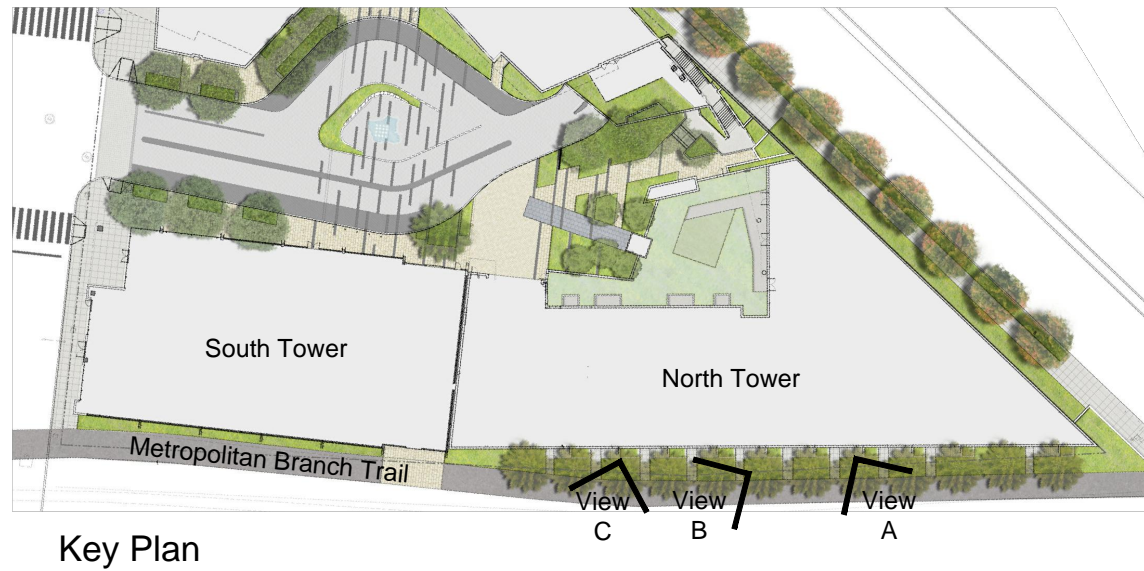
A - North Tower Enlarged Pool Deck Section



B - North Tower Enlarged Terrace/Green Roof Section



C - North Tower Enlarged Penthouse Section



- Metal & glass canopy
- Metal railing & gate
- Concrete walk
- Brick stoop
- Brick planter
- Landscape buffer

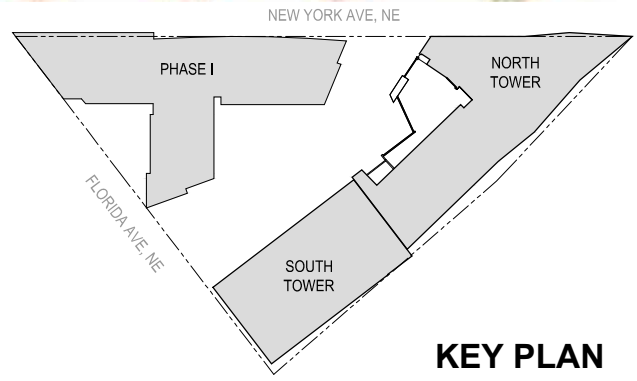
© 2014 SK+I Architectural Design Group, LLC.





Notes:

1. Applicant requests the flexibility to vary the final selection of the exterior materials within the color ranges and material types (maintaining the same general level of quality) proposed, based on availability at the time of construction and further project design.
2. Refer to sheets A-109, A-110, A-217, and A-311 for additional signage and material information



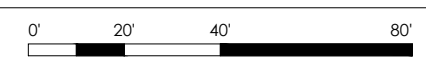
MRP | REALTY

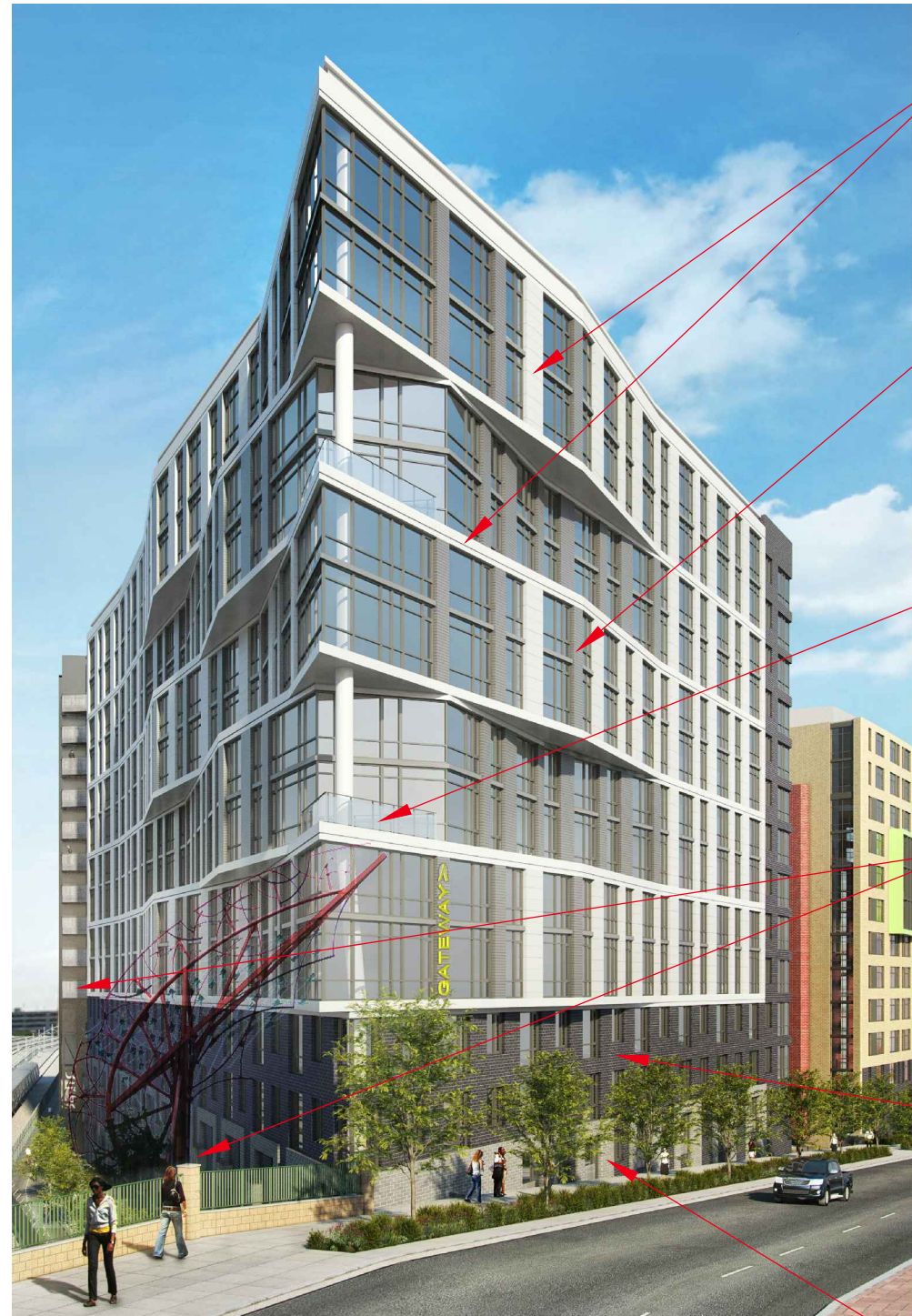
Washington Gateway | Washington, DC

December 30, 2016 | A-106



Architecture - Overall - Proposed North Elevation





Composite Panel Color Range



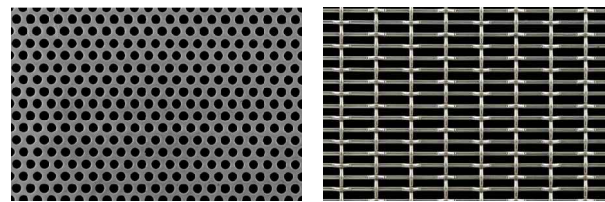
Corrugated Metal Panel Color Range (windows and penthouse to match)



Frosted Glass Railing



Metal Railing Range



Field Brick Color Range



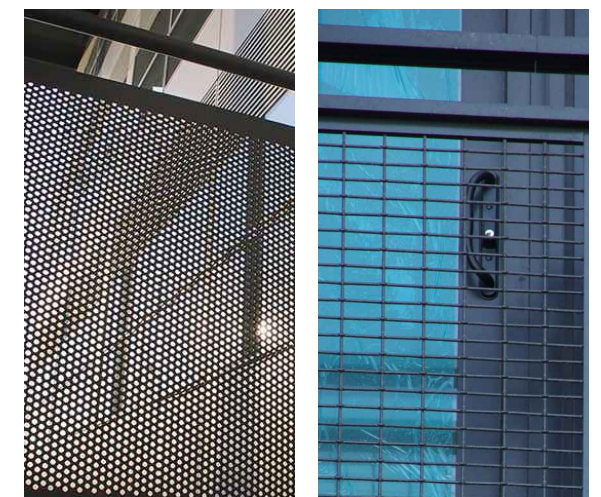
Accent Brick Color Range



Example of Corrugated Metal Panels



Example of Frosted Glass Railing

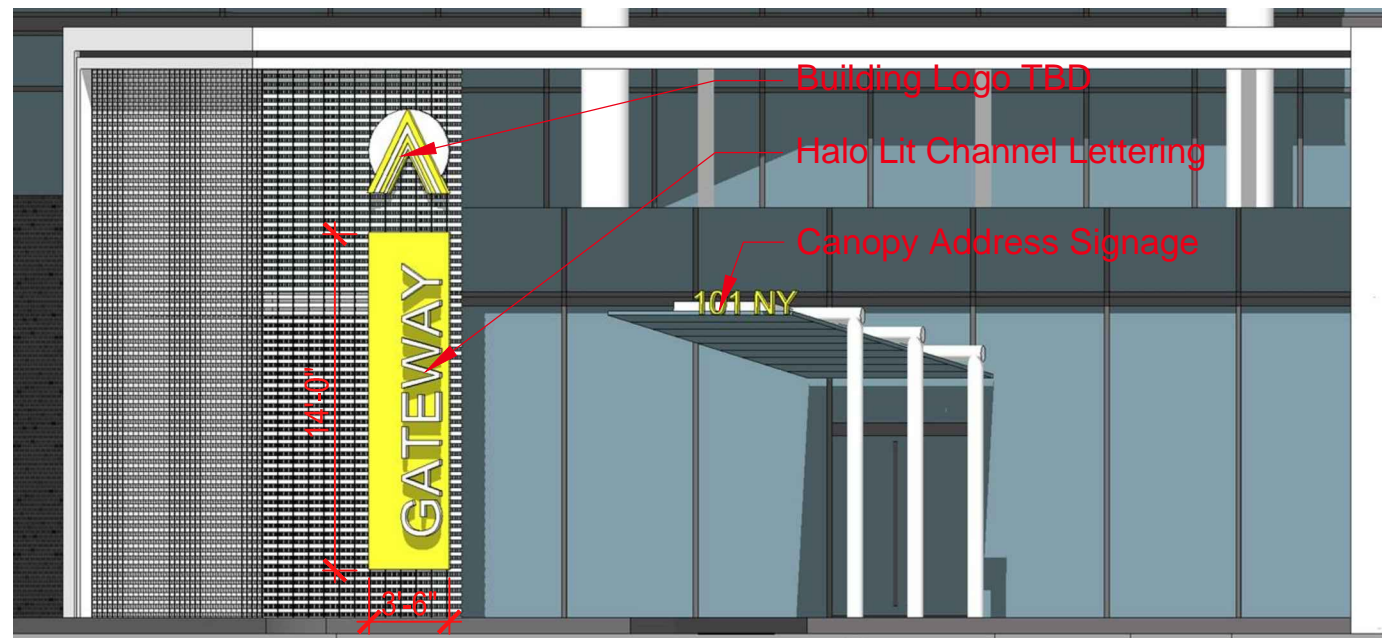


Examples of Metal Railings

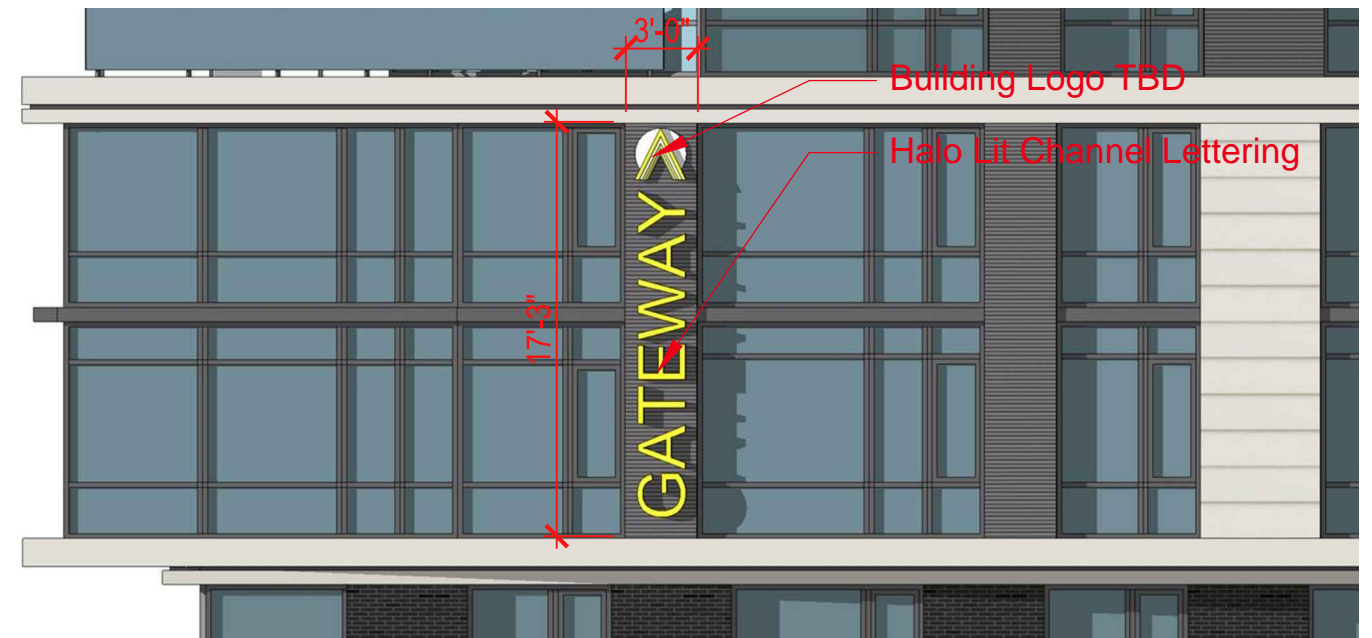
Note:

Applicant requests the flexibility to vary the final selection of the exterior materials within the color ranges and material types (maintaining the same general level of quality) proposed, based on availability at the time of construction and further project design.

Signage Area A



Signage Area B



Notes:  
 1. The exterior signage elevations are preliminary and shown for illustrative purposes only. Font, message, logo, and color may be revised provided the maximum overall dimensions and signage materials do not change.