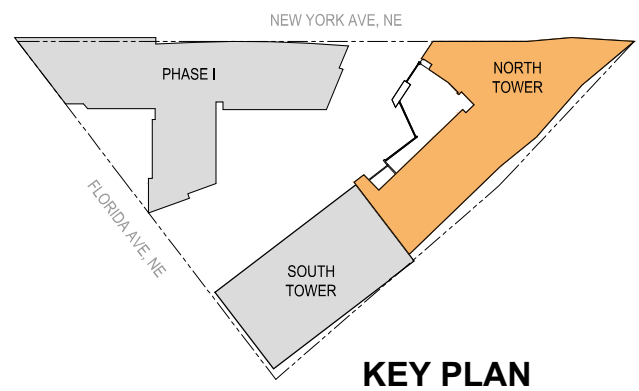
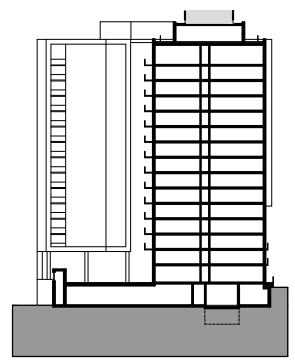


A- Penthouse Section at Solar Panels

- Notes:
1. The interior and mechanical layouts shown of the building are schematic. Changes to the layouts and mechanical, not affecting the exterior envelope or the square footage distribution, may occur.
 2. Refer to A-200 sheets for information on the South Tower.
 3. Final rooftop design to be determined by mechanical system selection.
 4. Refer to landscape drawings for more information on roof design.
 5. Refer to A-111 for enlarged rooftop sections.



KEY PLAN



KEY SECTION

MRP | REALTY

Washington Gateway | Washington, DC

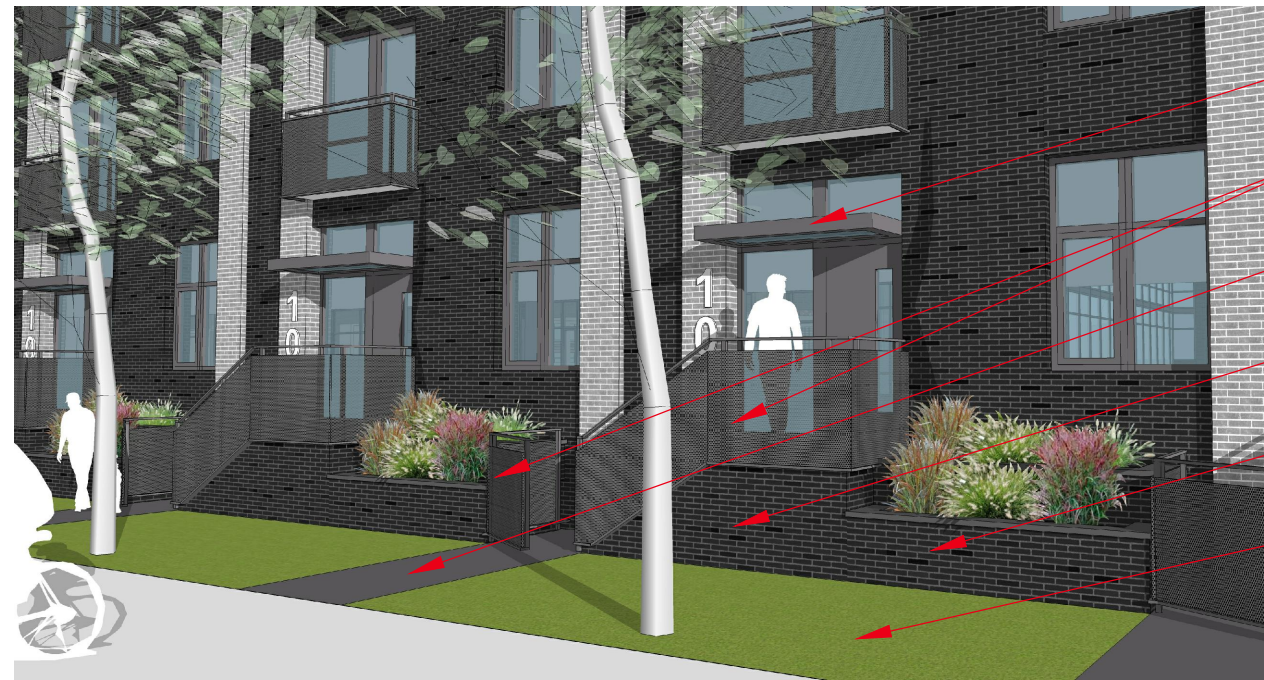
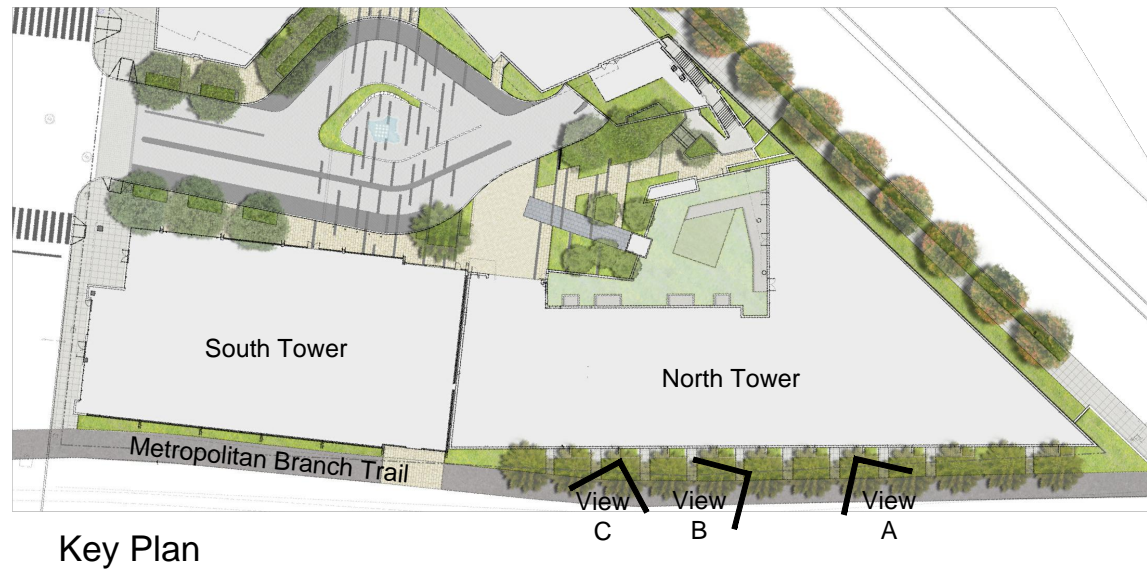


Architecture - North Tower - Roof Plan

February 9, 2017 | A-308

0' 15' 30' 40'

ZONING COMMISSION
District of Columbia
CASE NO.06-14D
EXHIBIT NO.39



- Metal & glass canopy
- Metal railing & gate
- Concrete walk
- Brick stoop
- Brick planter
- Landscape buffer

© 2014 SK+I Architectural Design Group, LLC.

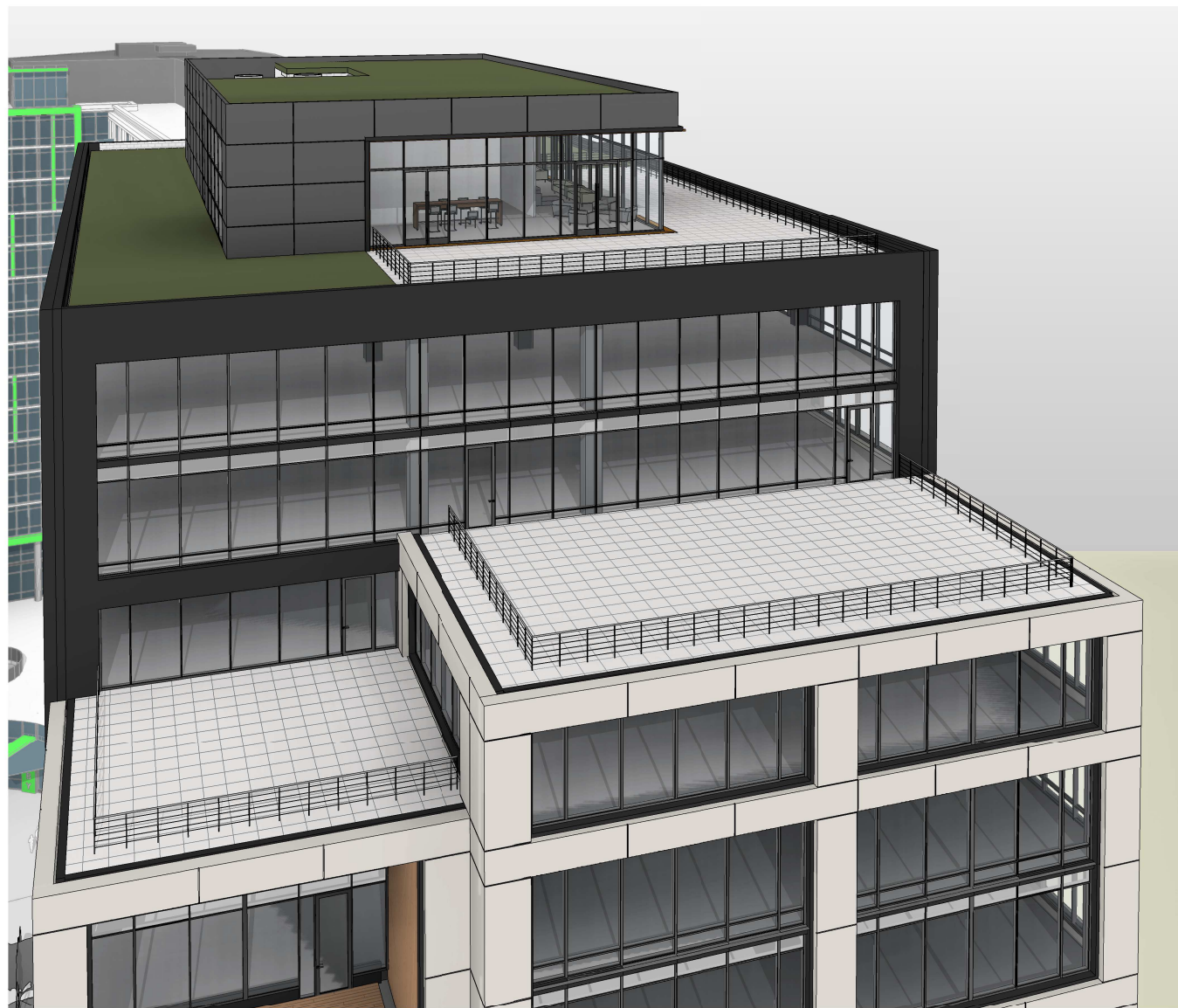
View A



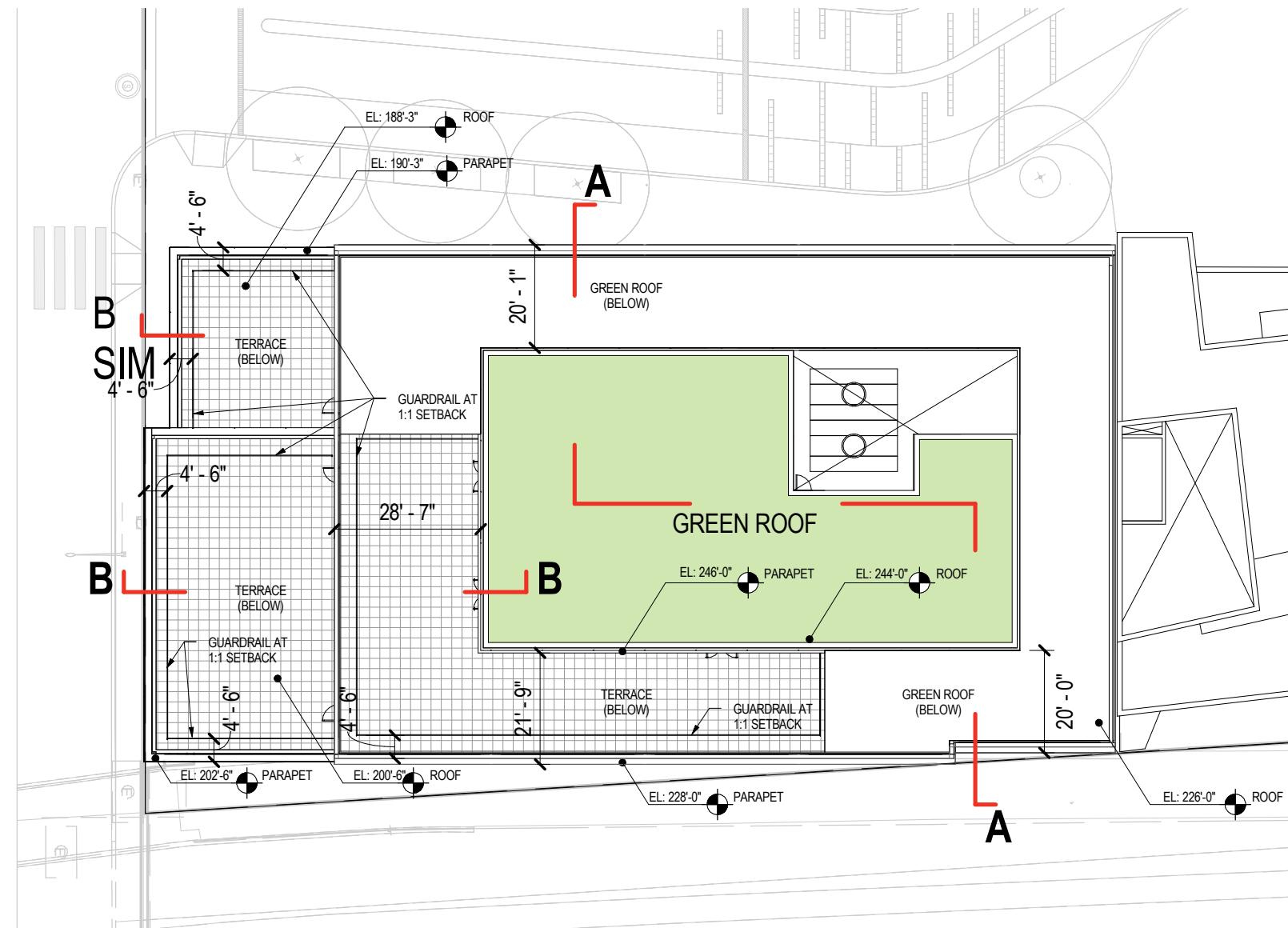
View B



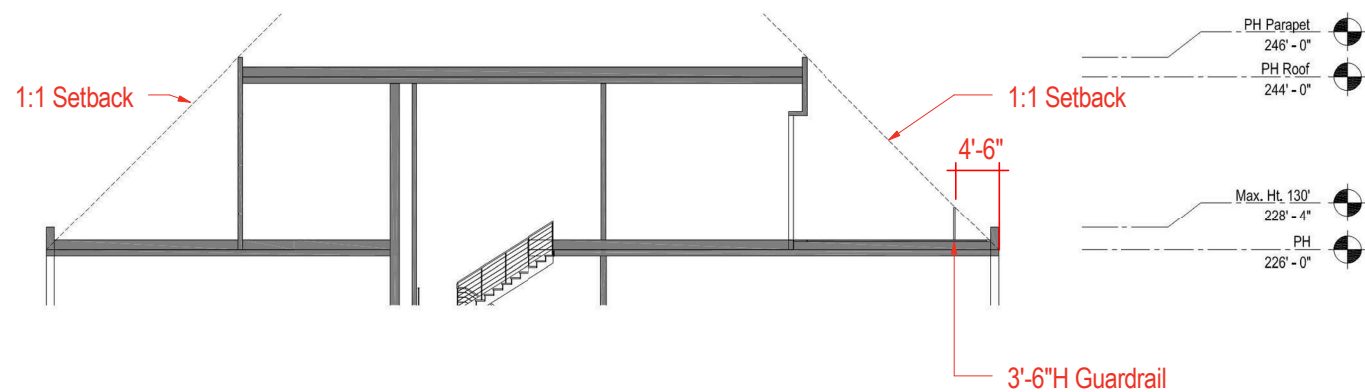
View C



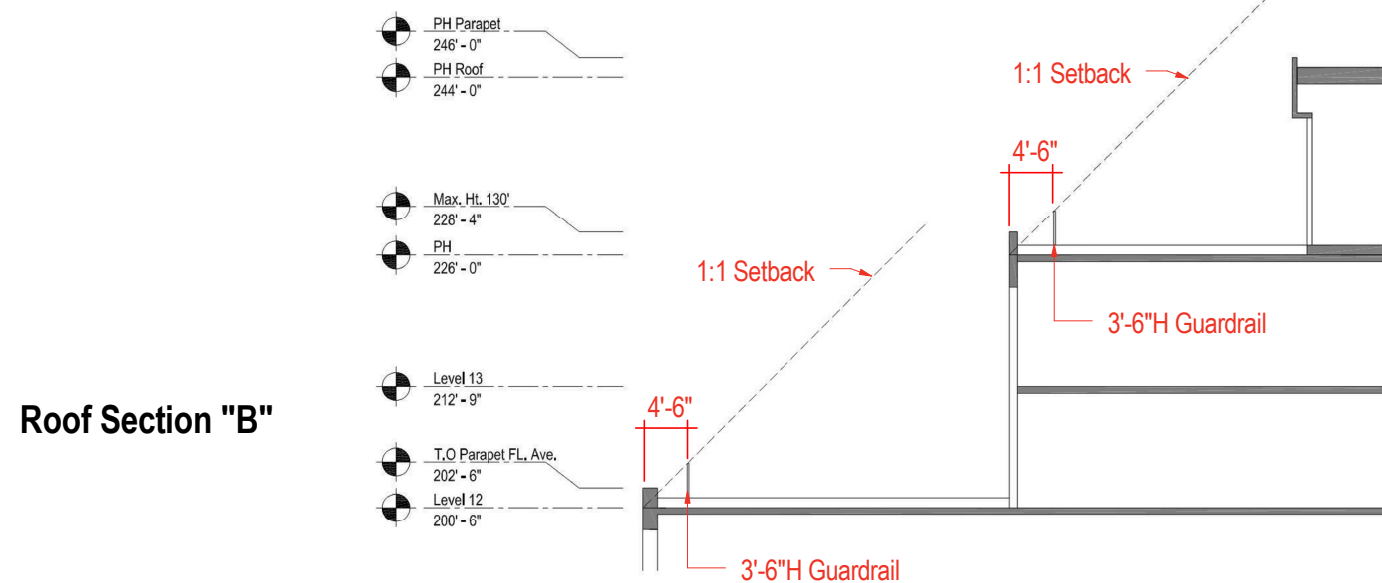
Roof View



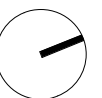
Roof Plan



Roof Section "A"



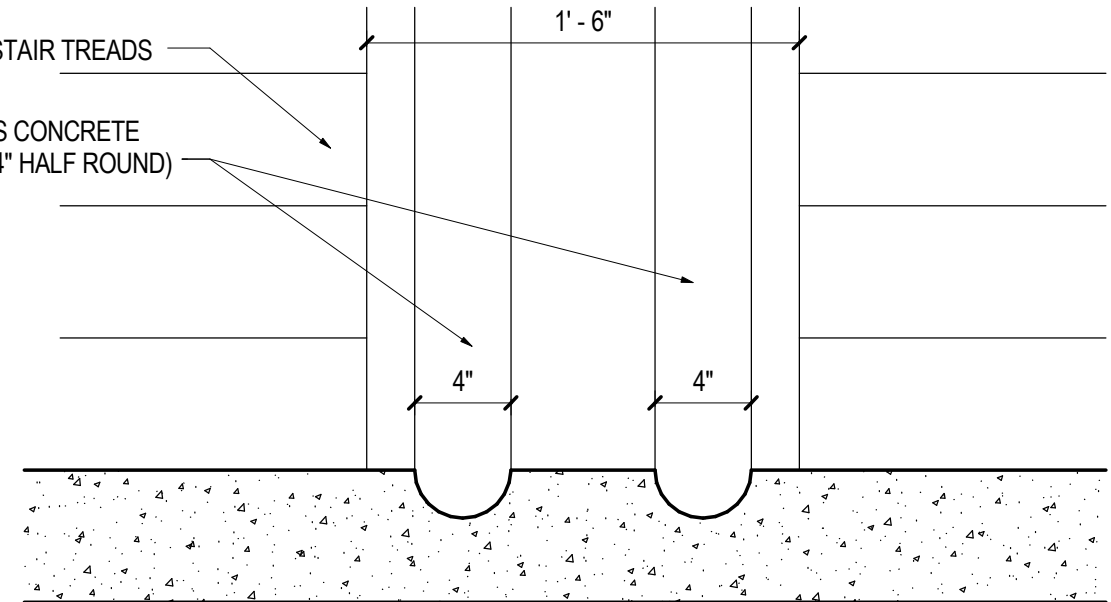
Roof Section "B"





CONCRETE STAIR TREADS

CONTINUOUS CONCRETE BIKE RAMP (4" HALF ROUND)



SECTION A - TYP. BIKE RAMP

EXAMPLE BIKE RAMPS

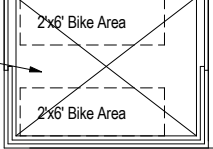
RESIDENTIAL TOWER ACCESS

VIEW 1 SHEET A-210

"PERCH" - SEATING & COUNTER

EL. 63'-6"

ELEVATOR (TO PLAZA)



TRAIL MAPS & INFORMATION

DRINKING FOUNTAIN & BOTTLE FILLER

SEATING

REPAIR AREA (WITH TIRE PUMP)

STAIR DOWN TO PLAZA (5.5" RISERS, 15" TREADS)

EL. 75'-3"

BIKE RAMP

SECT. A

4'-0 1/2"

5'-0"

BIKE RAMP

SECT. A

4'-0 1/2"

VENDING

EMERGENCY CALLBOX

BIKE RACKS (12 SPACES)

VIEW 2 SHEET A-211

FITNESS (OFFICE)

