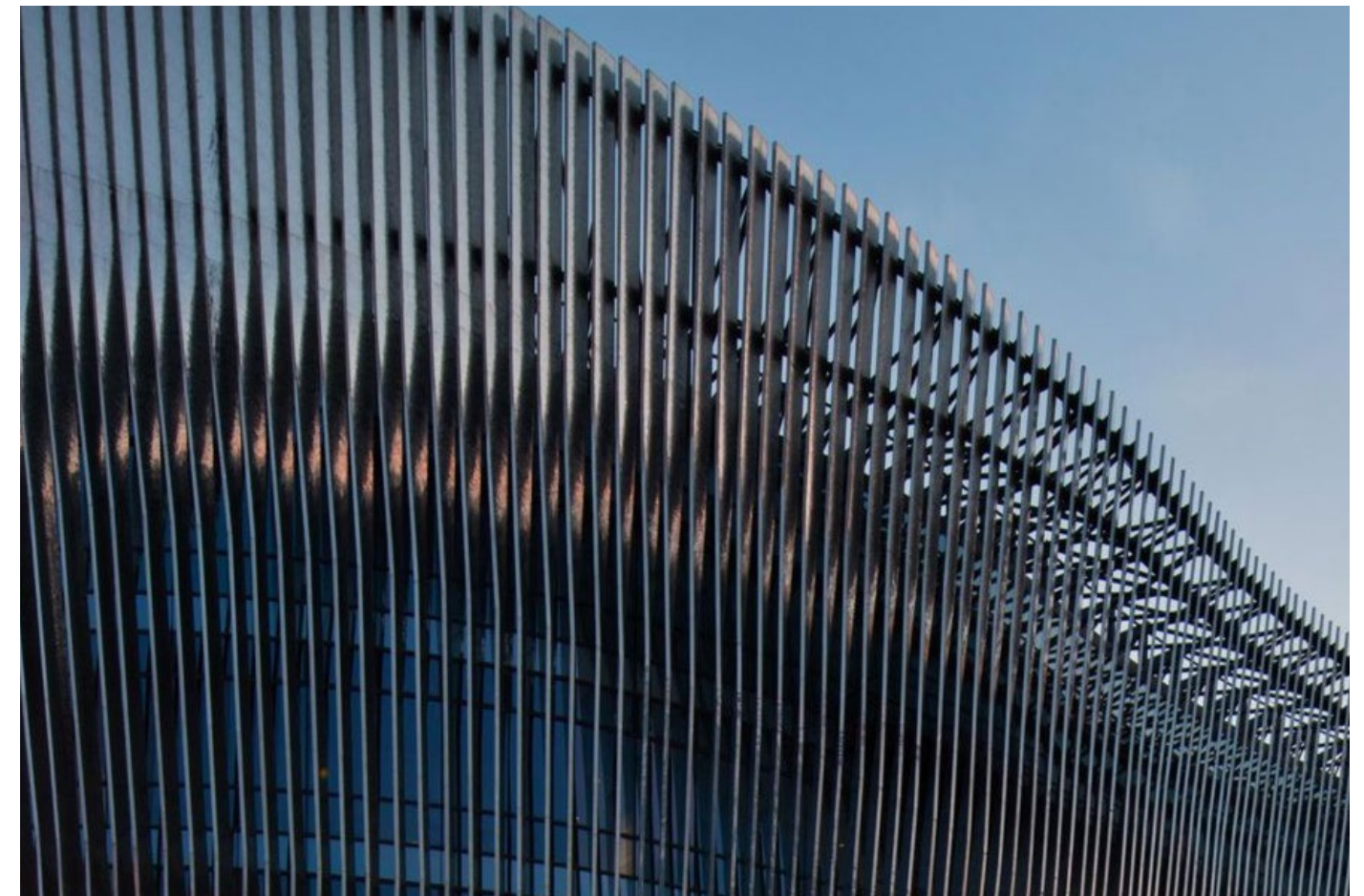
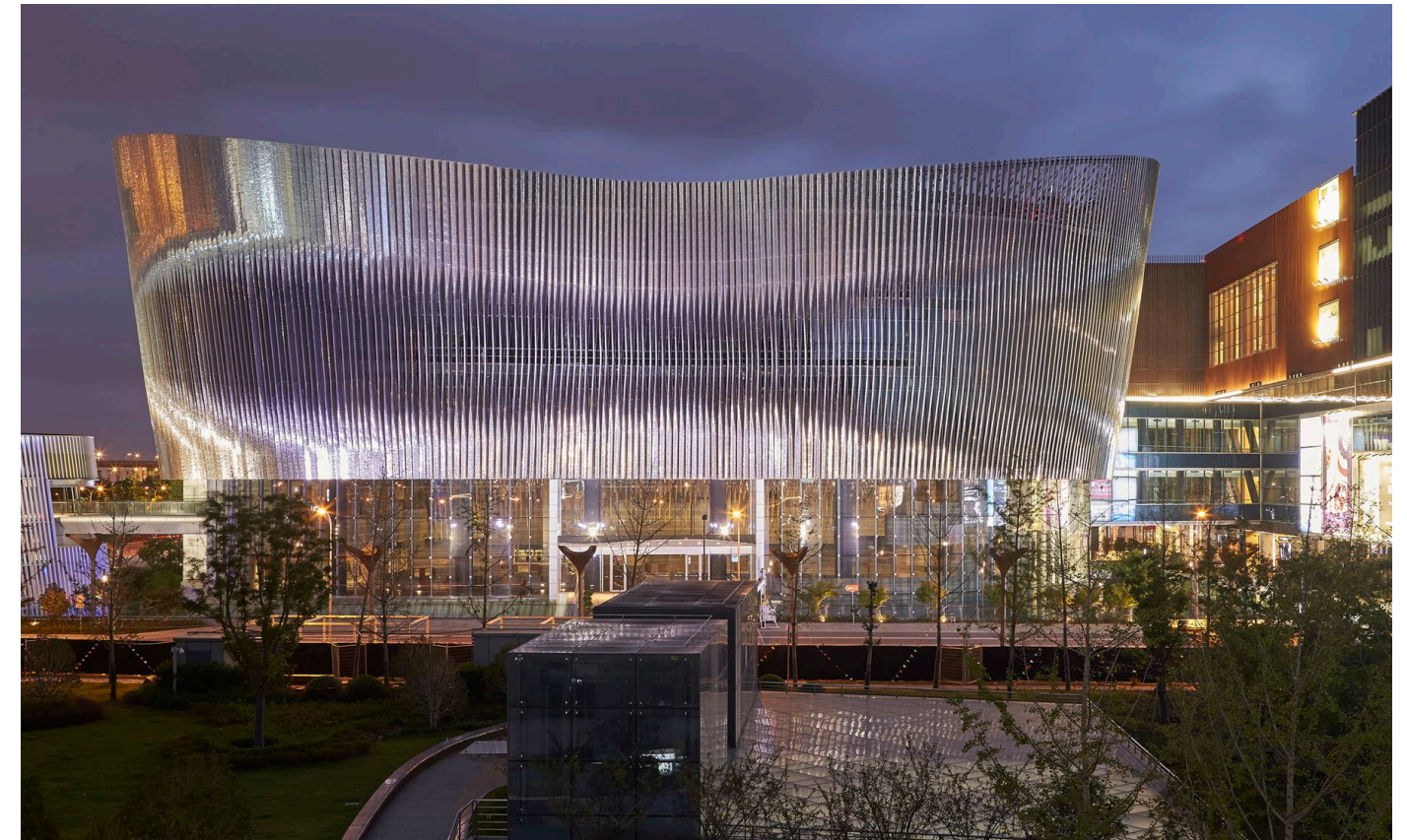
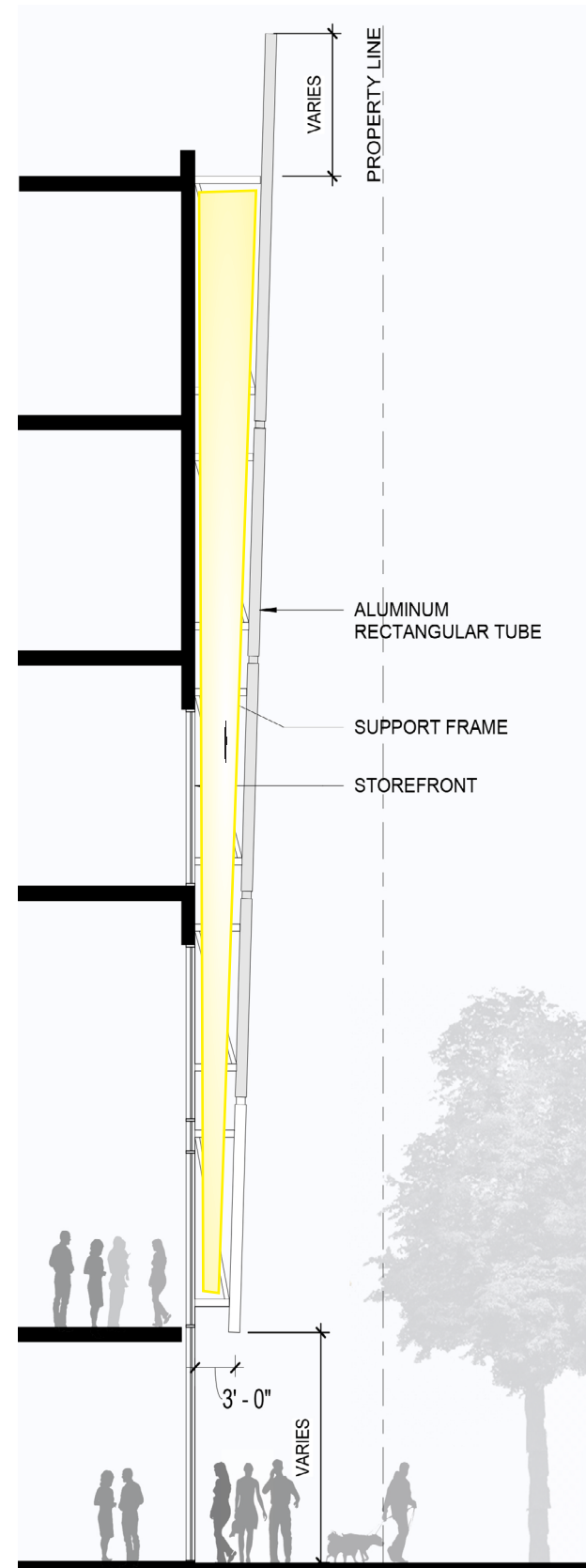
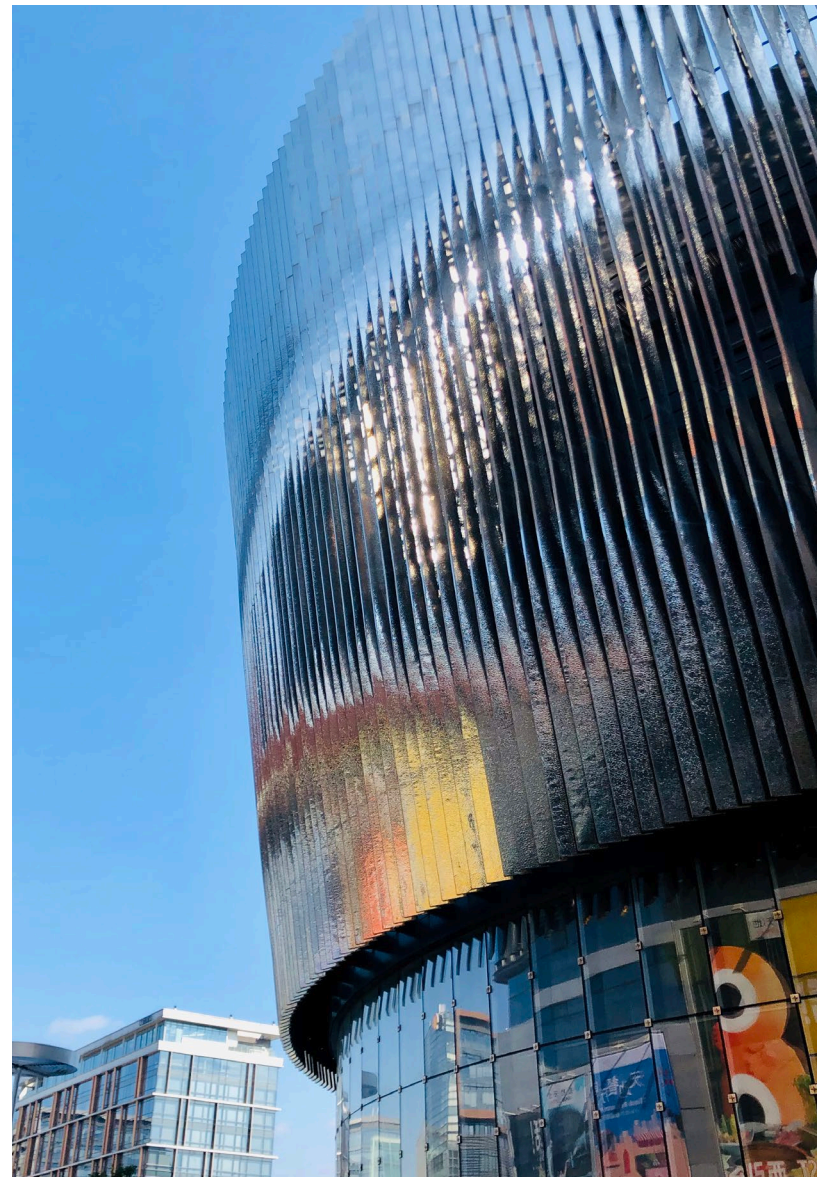


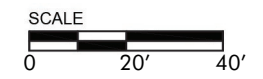
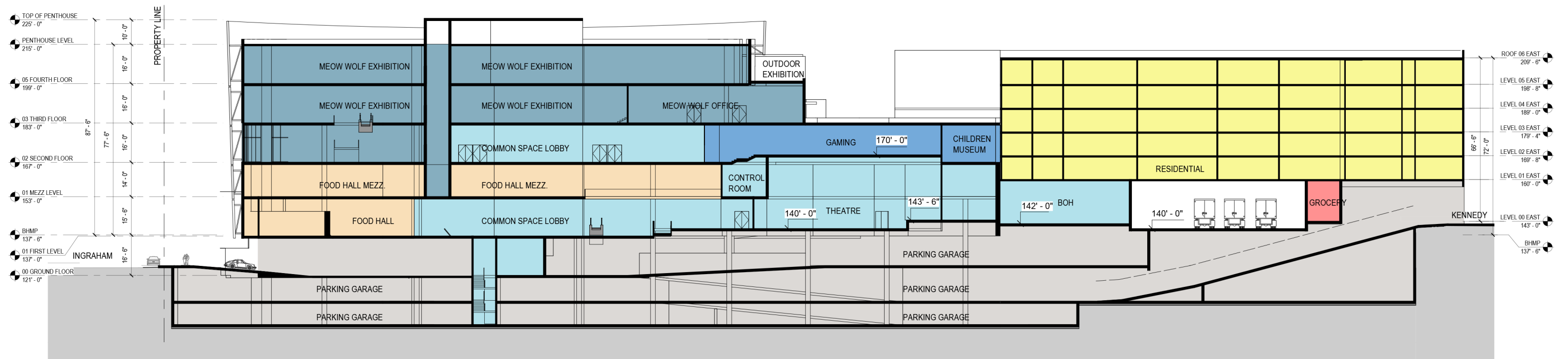
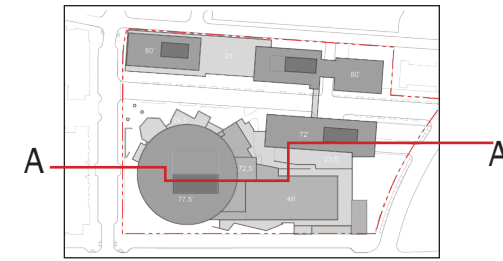
THE HUB'S FACADE

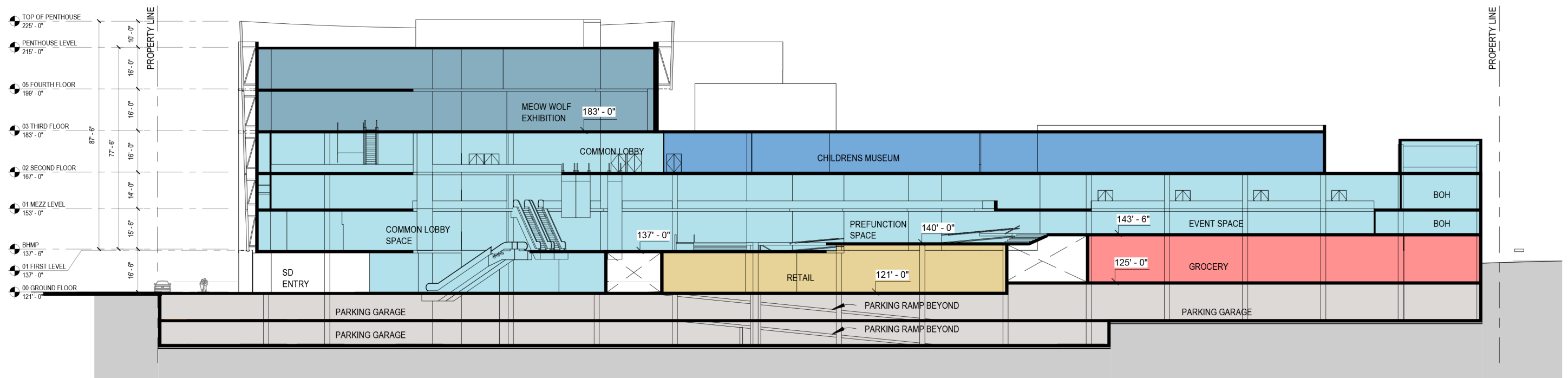
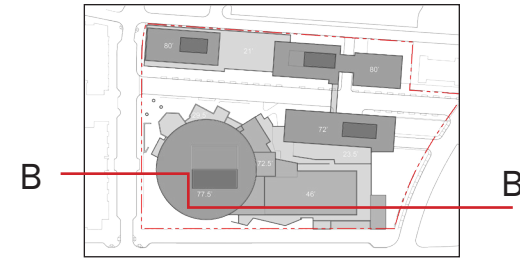
at the corner of South Dakota Ave NE and Ingraham St

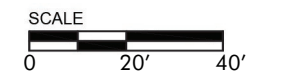
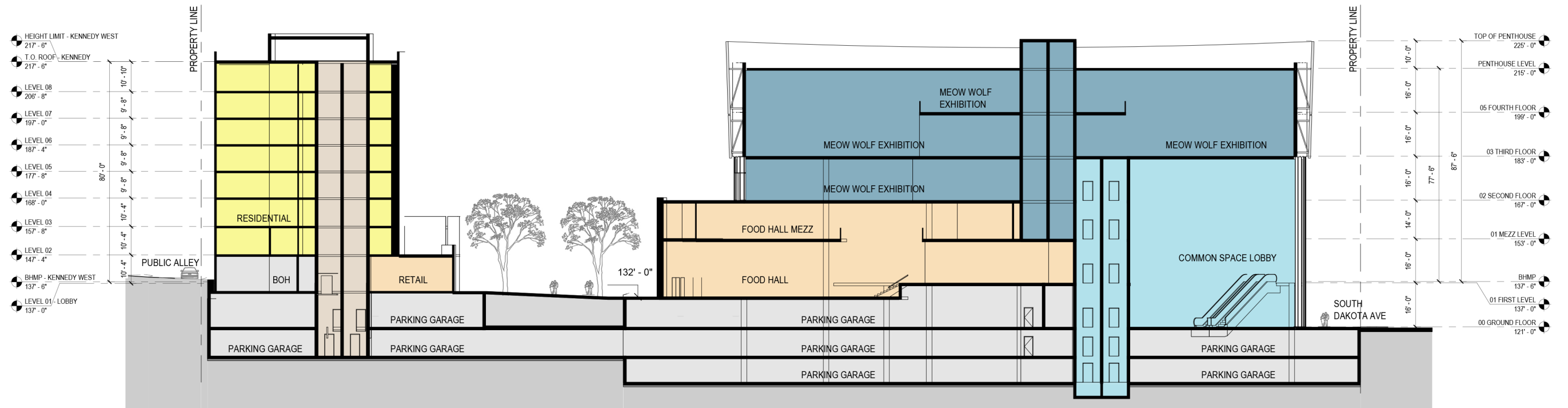
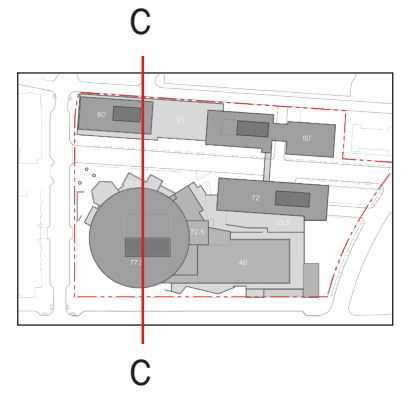
The Hub's exterior is clad with a series of vertical fins that function as rain and sun screens. The fins are formed of aluminum rectangular tubes. The material choice results in a diffuse reflection of the sky. Lighting is within the cavity between the scrim and the enclosure and will focus only on the building.

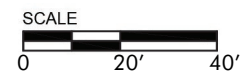
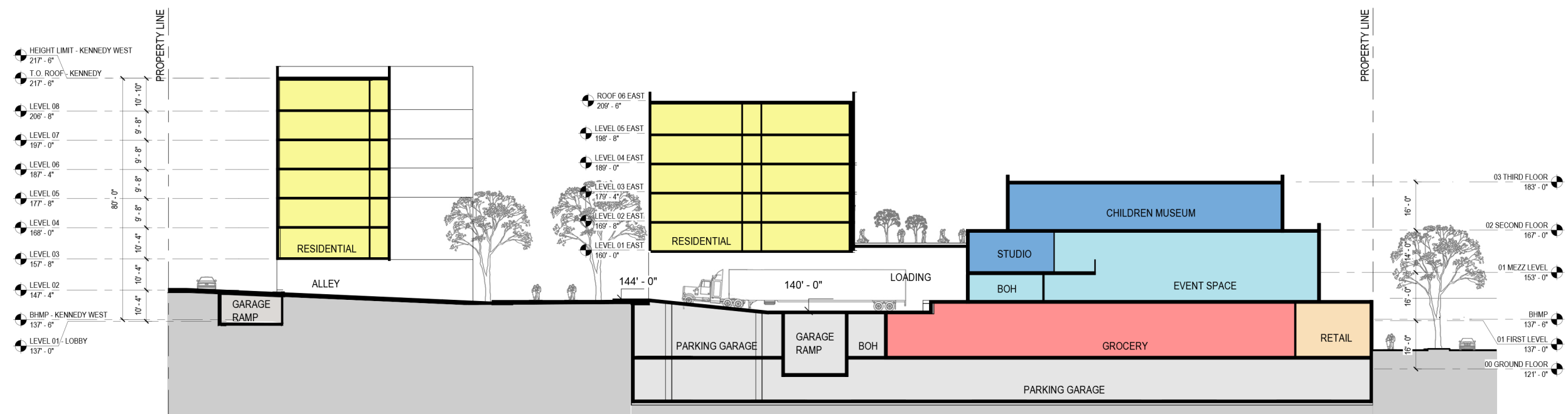
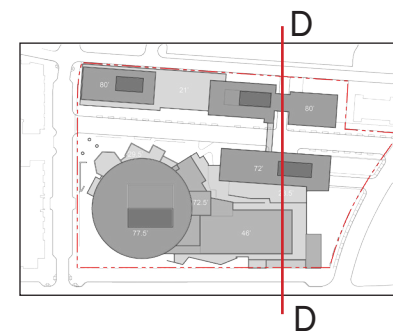


FACADE DETAILS - SECTION THROUGH THE HUB









INTENTIONALLY BLANK