

VEGETATED OR "GREEN" ROOF		
	APPROVED	PROPOSED
OVER AT LEAST 2" AND LESS THAN 8" OF GROWTH MEDIUM	3,536 SF	3,595 SF

GROSS FLOOR AREAS	SF
SCREENED MECH. EQUIP. PENTHOUSE HABITABLE SPACE	1284 3272

**NOTES:**

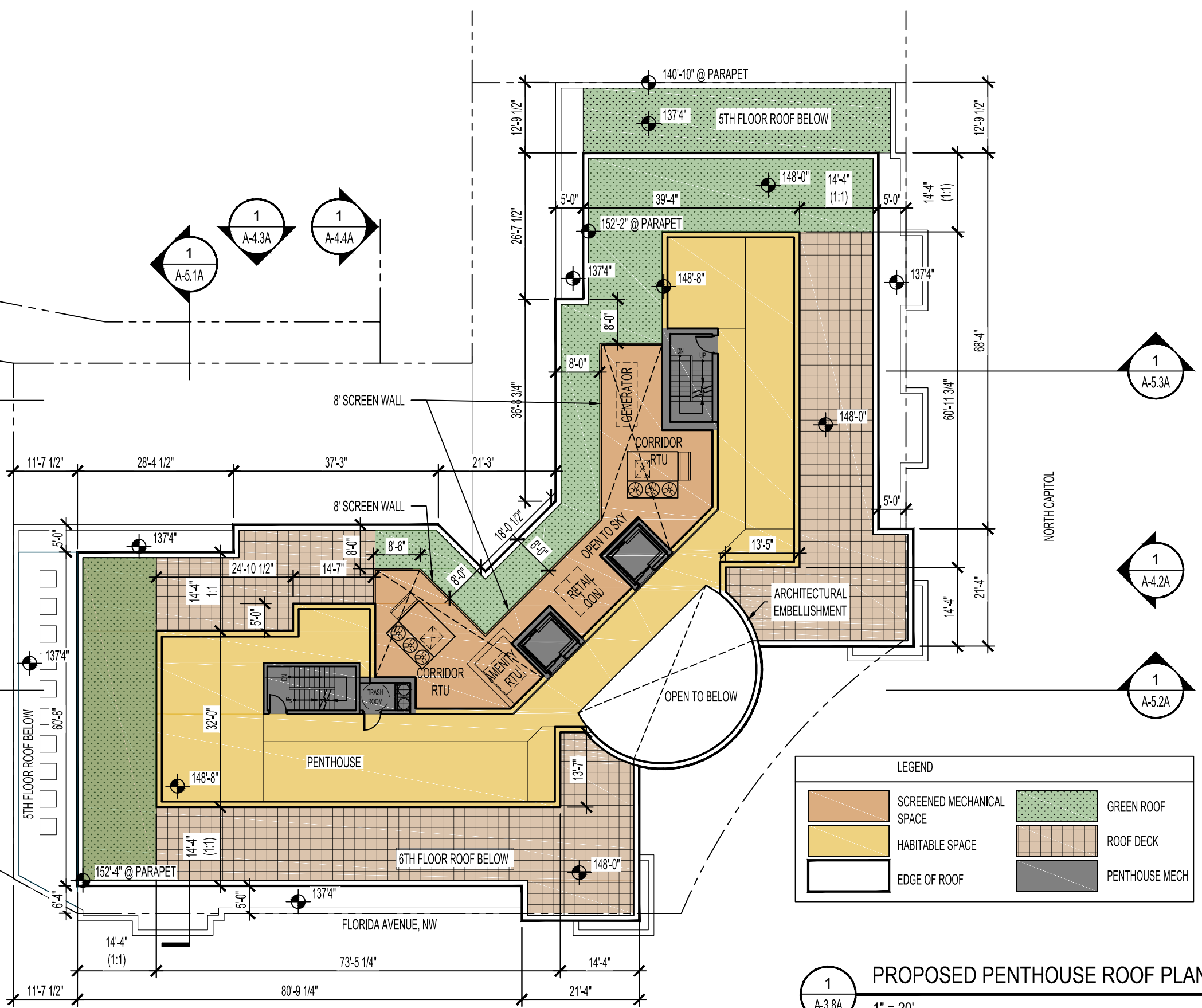
1. THE EXTERIOR ELEVATIONS, INCLUDING DOOR AND WINDOW SIZES AND LOCATIONS, THE INTERIOR PARTITION LOCATIONS, THE NUMBER, SIZE, AND LOCATIONS OF RESIDENTIAL UNITS, OUTDOOR SPACE, STAIRS BALCONY AND ELEVATORS ARE PRELIMINARY AND SHOWN FOR ILLUSTRATIVE PURPOSES ONLY. THE FINAL LAYOUTS MAY VARY.

2. ALL SPOT ELEVATIONS ARE RELATIVE TO THE MEASURING POINT 79'-1 1/2" TAKEN AT THE CENTER OF THE NORTH CAPITOL TOP OF CURB, ASSUMED FPR THESE DRAWINGS TO BE +0'-0"

**PROPOSED REVISIONS**

\*CHANGES TO ROOF STRUCTURE TO INCORPORATE ZC ORDER NO. 14-13

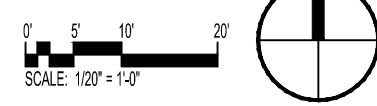
1. NEW GREEN ROOF LOCATION
2. NEW MECHANICAL EQUIPMENT LOCATION
3. NEW PARAPET HEIGHT



**LEGEND**

[Green Stippled Box]	SCREENED MECHANICAL SPACE	[Green Stippled Box]	GREEN ROOF
[Yellow Box]	HABITABLE SPACE	[Brown Grid Box]	ROOF DECK
[White Box]	EDGE OF ROOF	[Grey Box]	PENTHOUSE MECH

**1**  
A-3.8A  
1" = 20'



**Florida & Q Street, LLC**  
6820 Commercial Drive  
Springfield, VA 22151  
t: 703.750.6810 f: 703.750.6817

**Landscape Architecture Bureau**  
714 7th Street SE  
Washington, DC 20003  
t: 202.543.6553  
f: 202.543.6550

**AMT, LLC**  
10 G Street NE  
Suite 430  
Washington, DC 20002  
t: 202.289.4545  
f: 202.289.5051

**1600 North Capitol Street NW**  
Washington, DC 20002

**REVISIONS**

1	PUD SUBMISSION	5/31/2013
2	SUPPLEMENTAL PREHEARING SUBMISSION	9/13/2013
3	REVISED FOR FTG	5/12/2015
4	PUD REVISION	7/14/2016
5		
6		
7		
8		
9		
10		

DATE: 07/14/2016  
PROJECT NO: 2015-020  
DRAWN BY: JM, JH  
CHECKED BY: BB

**Bonstra Haresign**  
ARCHITECTS

PROPOSED PENTHOUSE PLAN

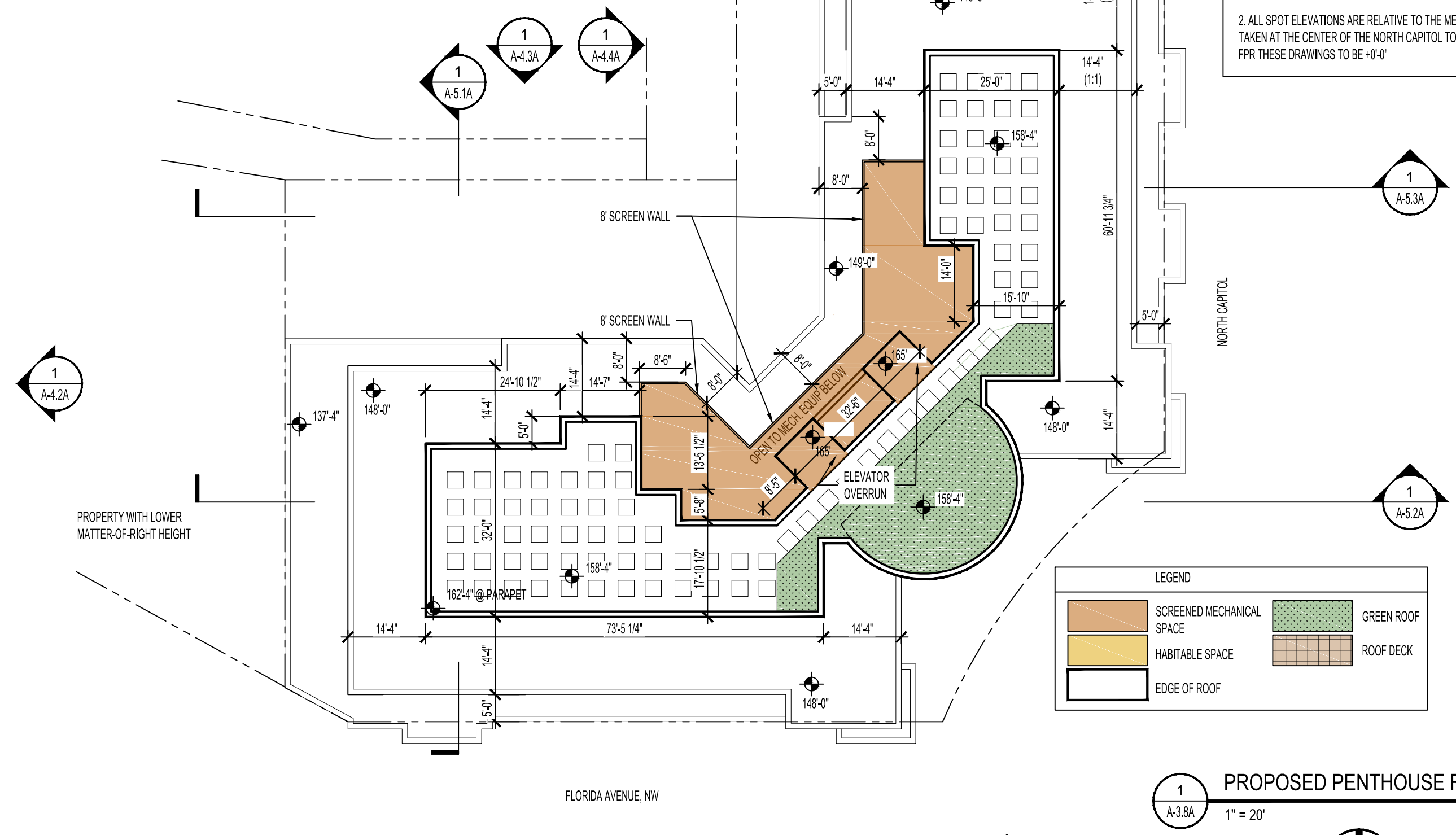
**PROPOSED REVISIONS**

\*CHANGES TO ROOF STRUCTURE TO INCORPORATE ZC ORDER NO. 14-13

1. NEW GREEN ROOF LOCATION
2. NEW MECHANICAL EQUIPMENT LOCATION
3. NEW PARAPET HEIGHT

**NOTES:**

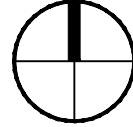
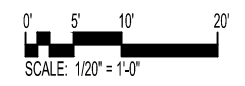
1. THE EXTERIOR ELEVATIONS, INCLUDING DOOR AND WINDOW SIZES AND LOCATIONS, THE INTERIOR PARTITION LOCATIONS, THE NUMBER, SIZE, AND LOCATIONS OF RESIDENTIAL UNITS, OUTDOOR SPACE, STAIRS BALCONY AND ELEVATORS ARE PRELIMINARY AND SHOWN FOR ILLUSTRATIVE PURPOSES ONLY. THE FINAL LAYOUTS MAY VARY.
2. ALL SPOT ELEVATIONS ARE RELATIVE TO THE MEASURING POINT 79'-1 1/2" TAKEN AT THE CENTER OF THE NORTH CAPITOL TOP OF CURB, ASSUMED FPR THESE DRAWINGS TO BE +0'-0"



**LEGEND**

	SCREENED MECHANICAL SPACE		GREEN ROOF
	HABITABLE SPACE		ROOF DECK
	EDGE OF ROOF		

**1**  
A-3.8A  
1" = 20'



**Bonstra Haresign**  
ARCHITECTS

**Florida & Q Street, LLC**  
6820 Commercial Drive  
Springfield, VA 22151  
t: 703.750.6810 f: 703.750.6817

**Landscape Architecture Bureau**  
714 7th Street SE  
Washington, DC 20003  
t: 202.543.6553 f: 202.543.6550

**AMT, LLC**  
10 G Street NE  
Suite 430  
Washington, DC 20002  
t: 202.289.4545 f: 202.289.5051

**1600 North Capitol Street NW**  
Washington, DC 20002

**REVISIONS**

1	PUD SUBMISSION	5/31/2013
2	SUPPLEMENTAL PREHEARING	
3	SUBMISSION	9/13/2013
4	REVISED FOR FTG	5/12/2015
5	PUD REVISION	7/14/2016

DATE: 07/14/2016  
PROJECT NO: 2015-420  
DRAWN BY: JM, JH  
CHECKED BY: BB

PROPOSED PENTHOUSE ROOF PLAN

**A-3.8A**