

1600 North Capitol Street

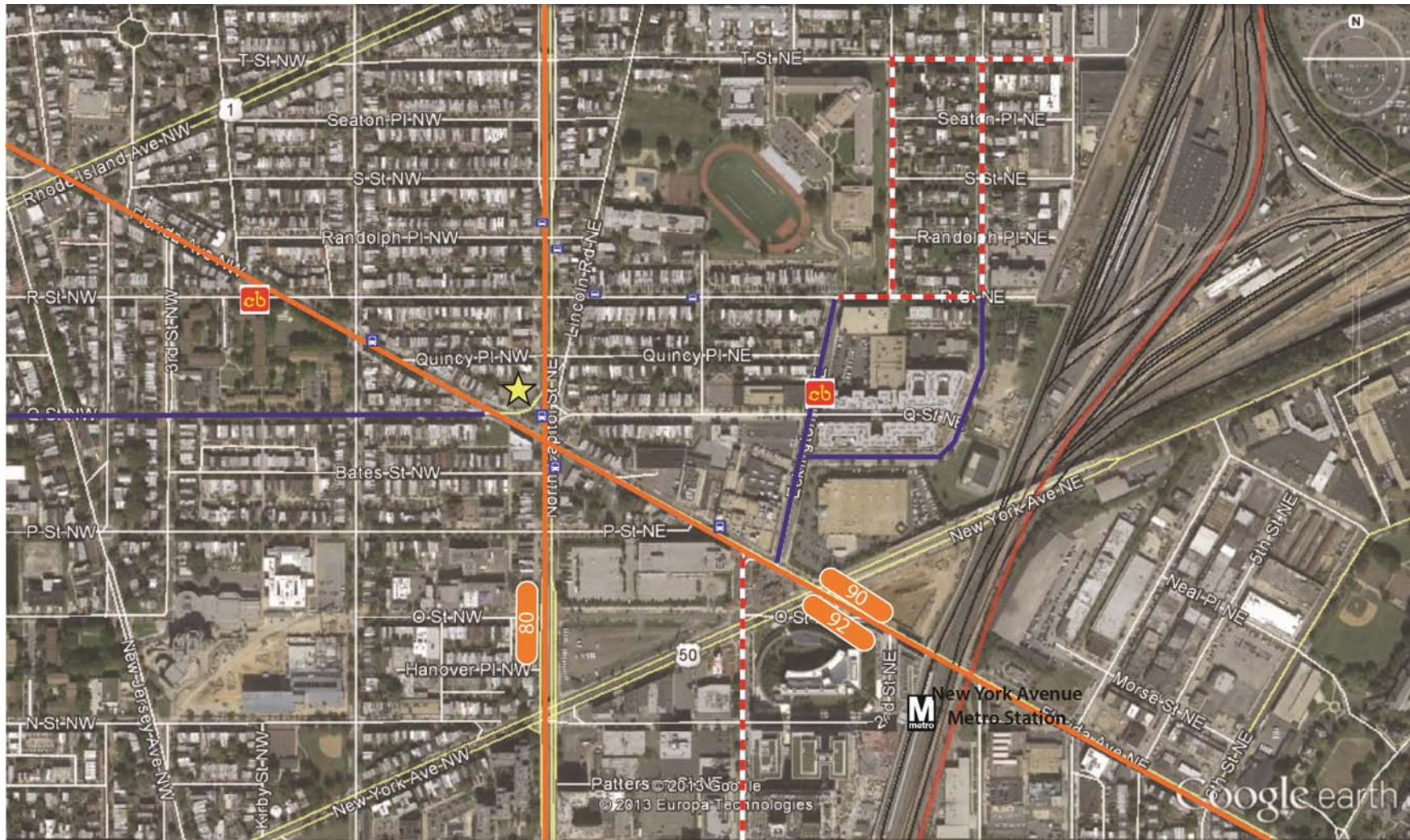
TRANSPORTATION OVERVIEW

NICOLE WHITE, P.E., PTOE

ZONING COMMISSION HEARING

**Washington, DC.
October 3, 2013**

TRANSPORTATION NETWORK



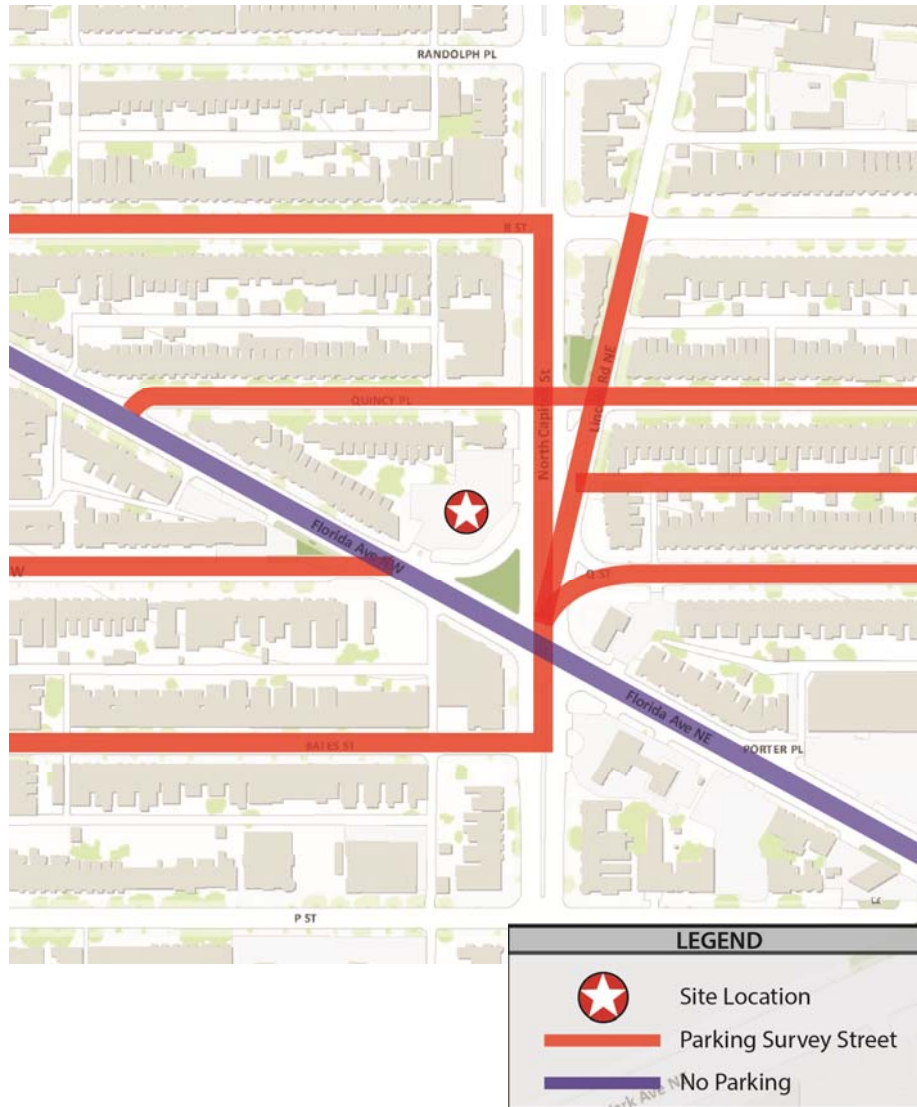
LEGEND

- Bike Lanes
- cb Capitol Bikeshare station
- Bus Stop
- On-Street Signed Bicycle route
- 90 Bus Route

1600 North Capitol Street Site Development

symmetra design
October 3, 2013

PARKING SURVEY RESULTS



ON-STREET SURVEY RESULTS

Street	Supply	Weekday June 25 (4:00 PM)		Weekend June 22 (4:00 AM)	
		Occupied Spaces	% Occupied	Occupied Spaces	% Occupied
R St.	78	40	51%	74	95%
Quincy Pl.	110	89	76%	103	94%
Lincoln Rd.	10	6	60%	6	60%
Q St.	97	56	58%	79	81%
Bates St.	73	46	63%	60	82%
North Capitol St.	5	0	0%	3	40%
Total Study Area	373	234	63%	322	86%

TRIP GENERATION



Table 1: 2006 PUD Trip Generation

Trip Generation	AM Peak Hour			PM Peak Hour		
	IN	OUT	TOTAL	IN	OUT	TOTAL
Trips for 85 Mid-Rise Apartment Units	5	12	17	13	9	22
Trips for 4000 GSF Retail	1	1	2	2	2	4
Total Site Trip Generation	6	13	19	15	11	26

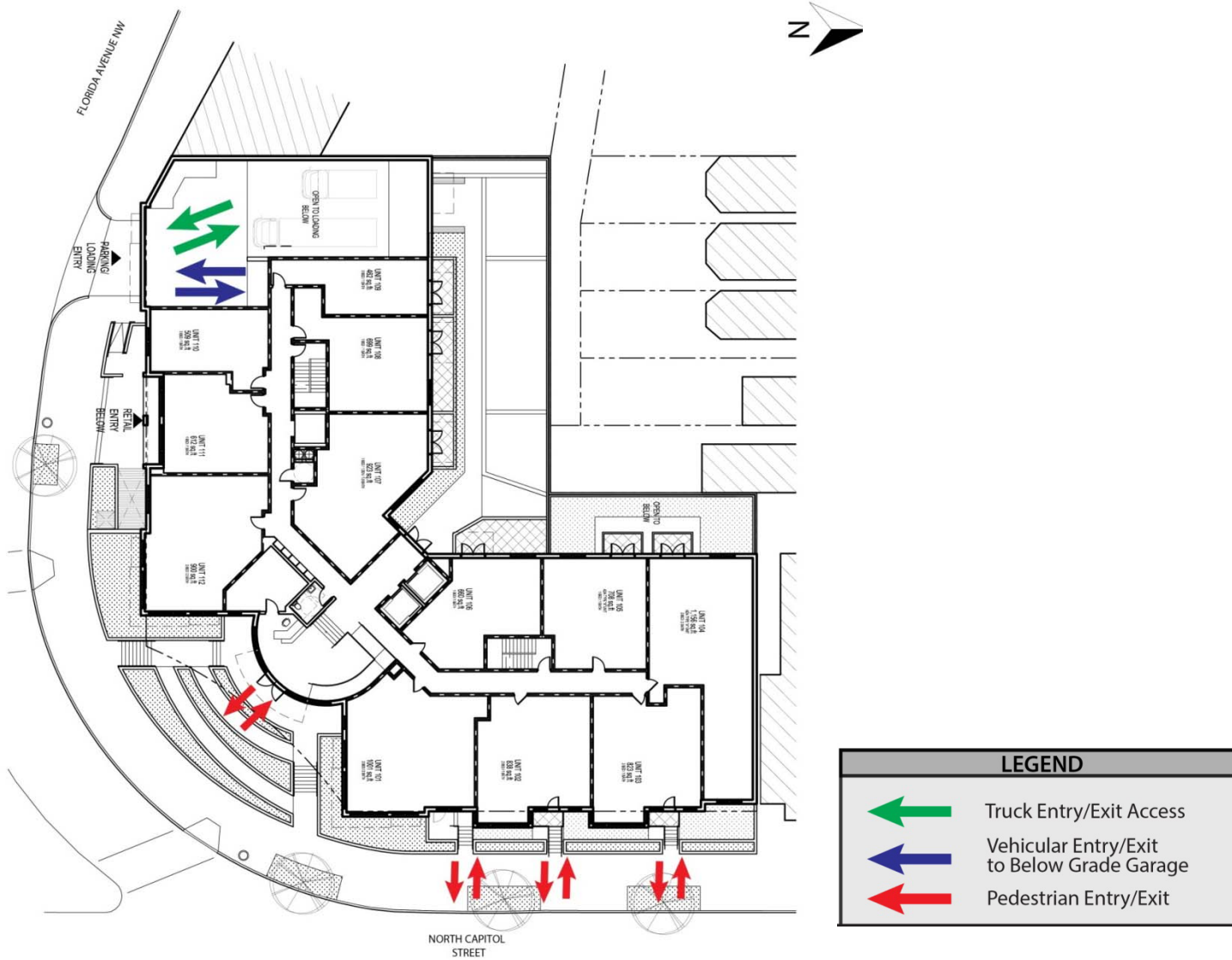
Table 2: 2013 PUD Trip Generation

Land Use	AM Peak Hour			PM Peak Hour		
	IN	OUT	TOTAL	IN	OUT	TOTAL
Trips for 90 Mid-Rise Apartment Units	5	13	18	14	9	23
Trips for 4000 GSF Retail	1	1	2	2	2	4
Total Trip Generation	6	14	20	16	11	27

Table 3: Net Increase in Site Trips (2006 v 2013)

Land Use	AM Peak Hour			PM Peak Hour		
	IN	OUT	TOTAL	IN	OUT	TOTAL
2006 Total Site Trip Generation	6	13	19	15	11	26
2013 Total Site Trip Generation	6	14	20	16	11	27
Net Increase in Site Trips	0	1	1	1	0	1

SITE CIRCULATION



1600 North Capitol Street Site Development

TRANSPORTATION MANAGEMENT COMMITMENTS



- Delivery Day/Hours- Residents will be required to schedule use of the loading berth on Monday through Friday from 10:00 AM to 2:00 PM and after 7:00 PM, and on Saturdays and Sundays from 7:00 AM to 7:00 PM.
- Loading Management Coordinator - The applicant will assign a loading management coordinator to prevent truck queuing and to help guide trucks' back-in movements to eliminate conflicts with pedestrians and bicyclists.
- Truck Size – The Applicant shall prohibit trucks larger than 30 feet from utilizing the loading berth.
- Residential Parking Permit Prohibition - Each residential lease/purchase agreement will contain a provision prohibiting the tenant/owner from applying for an off-site permit under the Residential Parking Permit (RPP) Program. In addition, the Applicant will request that DDOT remove the PUD site from the list of properties eligible for RPPs, or if presently not on the list, classifying it as ineligible for RPP.
- Unbundling of Parking - The Applicant will unbundle all parking cost from the cost of lease or purchase.
- Posting of Transportation Demand Management Commitments and Promotion of Public Transportation Options

TRANSPORTATION MANAGEMENT COMMITMENTS



- *Site Access - The Applicant will restrict the Florida Avenue curb cut to right-in/right-out movements. The Applicant will post signage prohibiting left turns in or out of the Florida Avenue curb cut.*
- *Bikeshare or Carshare Membership - The Applicant will offer each initial tenant/owner the one-time option of either a one-year Capital Bikeshare membership or a one-year carshare membership.*
- *Transportation Screen - The Applicant shall provide a transportation information screen in the residential lobby that will show real time arrival /availability for nearby buses, trains, carshare, and bikeshare.*
- *Bicycle Parking Spaces - The building shall include a minimum of 60 bicycle parking spaces in the building.*



THANK YOU

1600 North Capitol Street Site Development

symmetra design
October 3, 2013