

PLAN 1/16" = 1'-0"



STONE-FILLED WATERCOURSE



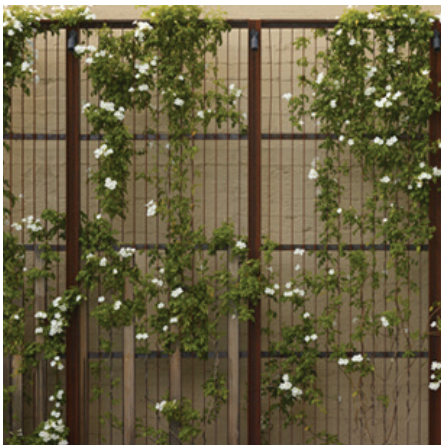
WOOD BENCH



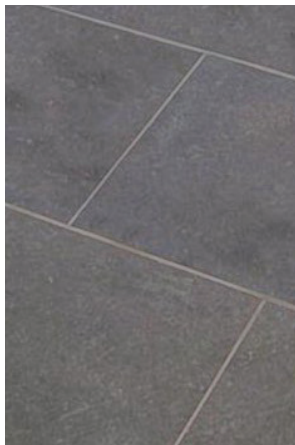
STORMWATER PLANTING



4' METAL LOUVERED PRIVACY SCREEN



GREEN SCREEN



STONE PAVERS



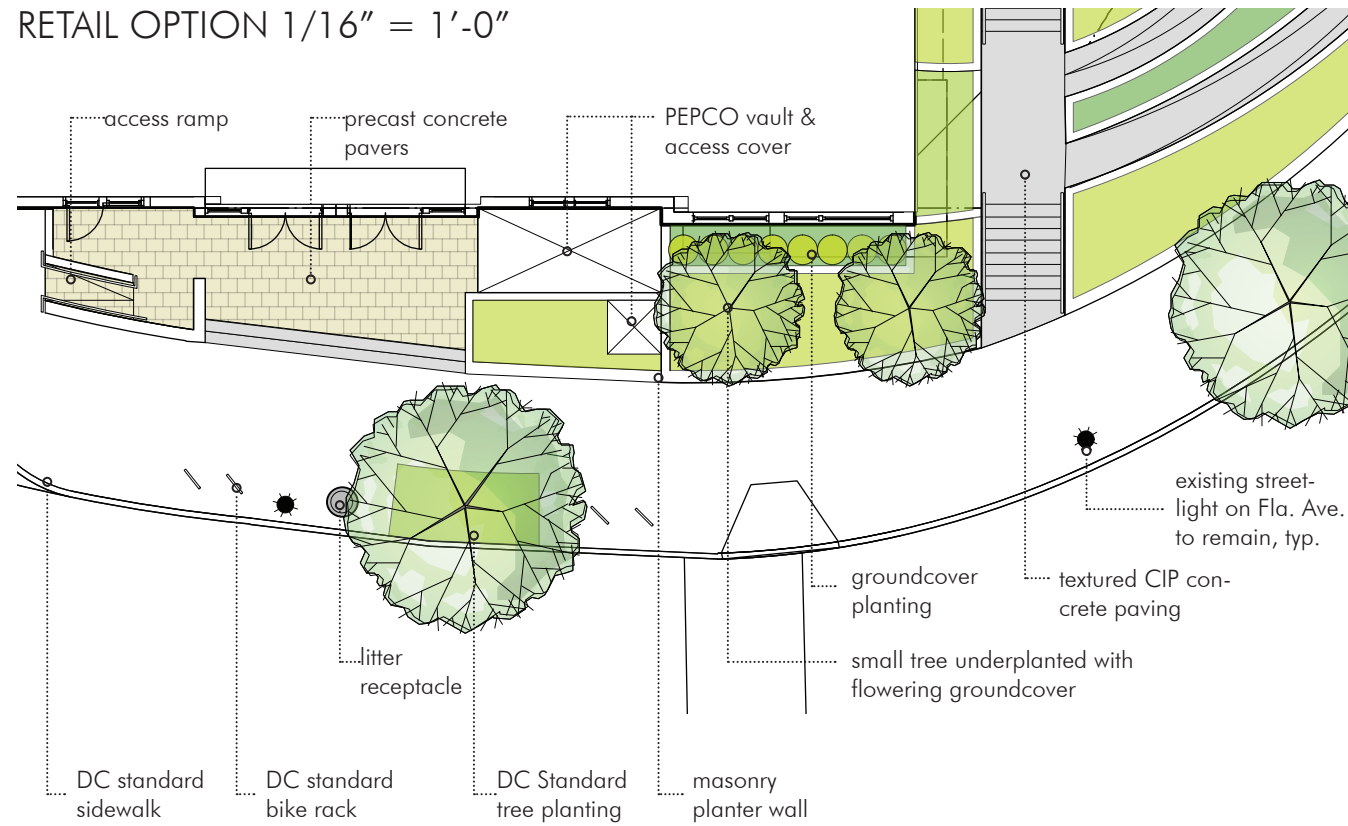
PERMEABLE UNIT PAVERS

Note: All landscaping and improvements shown in public space are subject to final approval by the D.C. Department of Transportation.

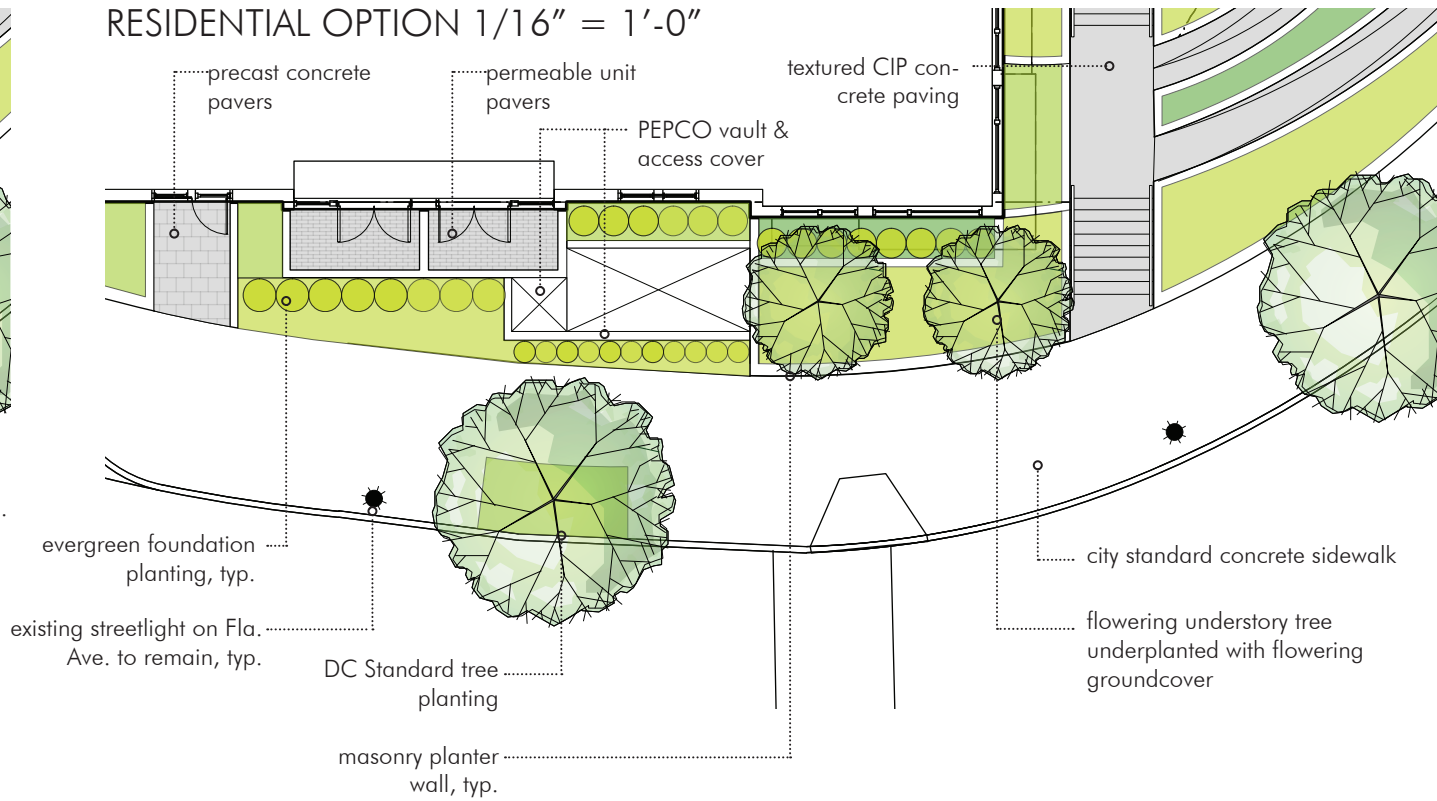
REVISIONS	
1	PUD SUBMISSION 5/31/2013
2	PRE HEARING SUBMISSION
3	SUBMISSION 9/13/2013
4	
5	
6	
7	
8	
9	
10	

DATE: 09/13/2013  
PROJECT NO: 2008-033  
DRAWN BY: TTB  
CHECKED BY: JF

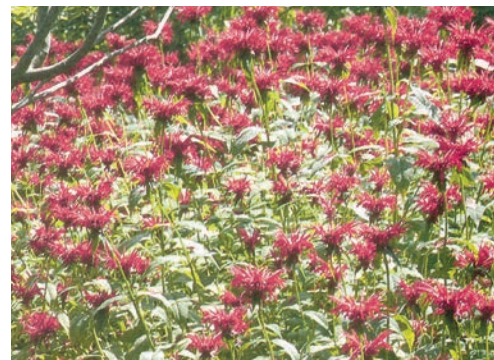
RETAIL OPTION 1/16" = 1'-0"



RESIDENTIAL OPTION 1/16" = 1'-0"



BICYCLE RACK PER DC STANDARD



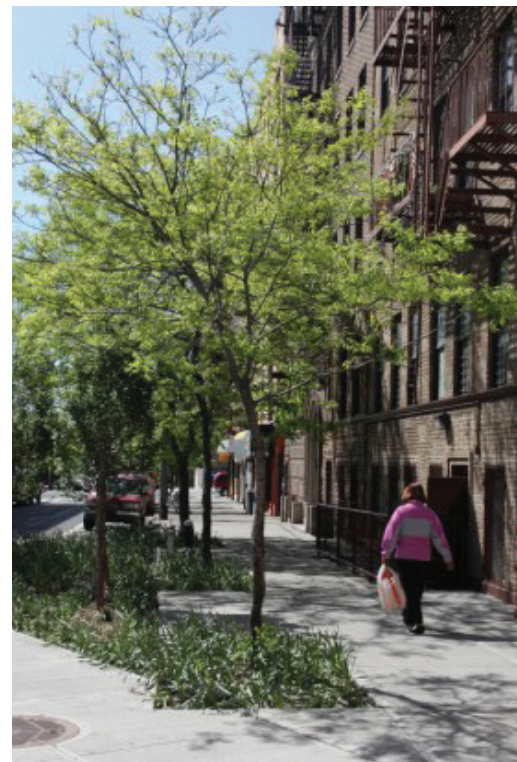
EVERGREEN GROUNDCOVER



LITTER RECEPTACLE BY 'VICTOR STANLEY'



BRICK PLANTER WALL



UNDERSTORY TREE PLANTING WITH EVERGREEN GROUNDCOVER

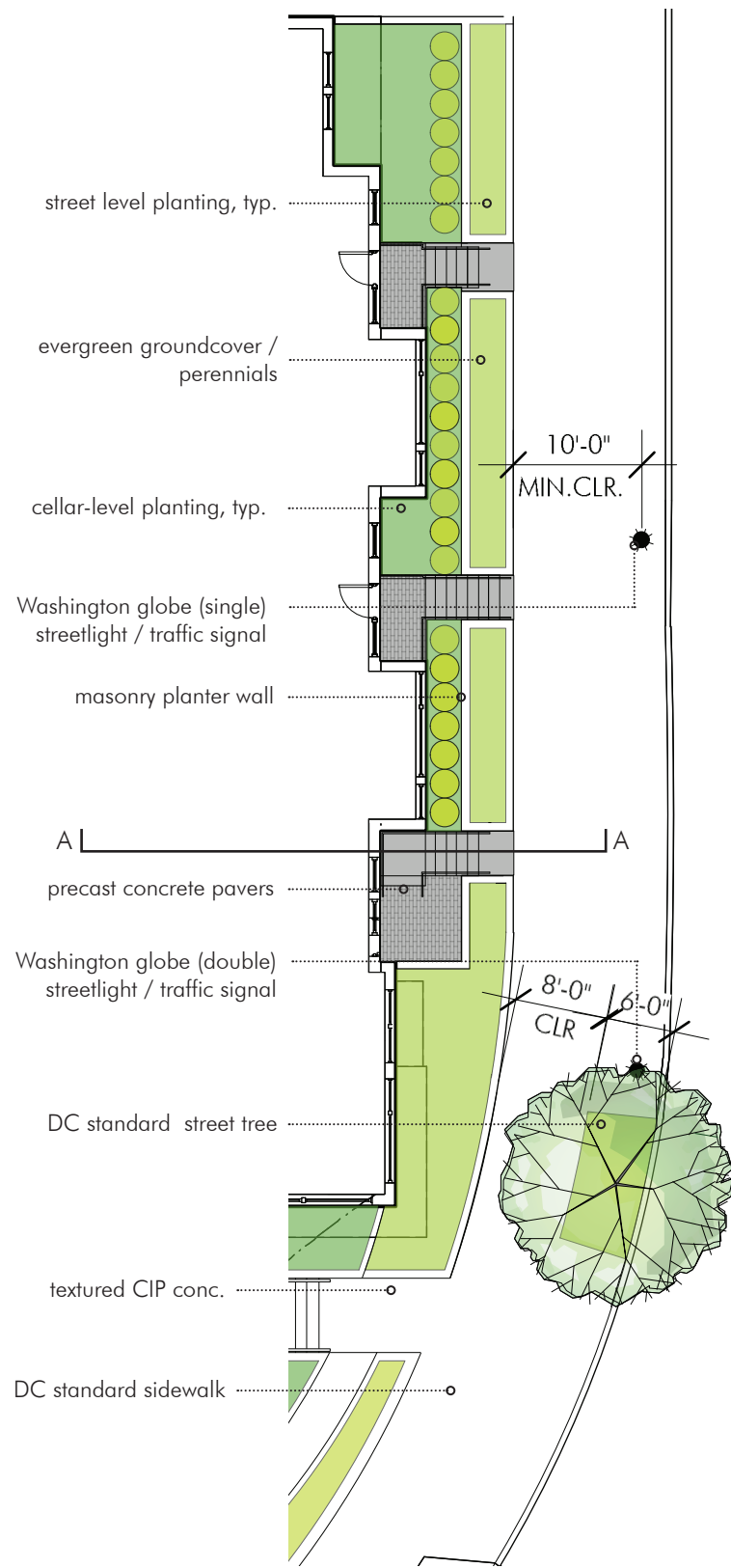


STEPS TO RETAIL AREA WITH PRECAST UNIT PAVERS

Note: All landscaping and improvements shown in public space are subject to final approval by the D.C. Department of Transportation.

REVISIONS	
1	PUD SUBMISSION 5/31/2013
2	PRE HEARING SUBMISSION 9/13/2013
3	
4	
5	
6	
7	
8	
9	
10	

DATE: 09/13/2013  
PROJECT NO: 2008-033  
DRAWN BY: TTB  
CHECKED BY: JF



RESIDENTIAL GARDEN | SCALE: 1/16"=1'  
3 STAIRS. 10'-0" CLEAR PATH

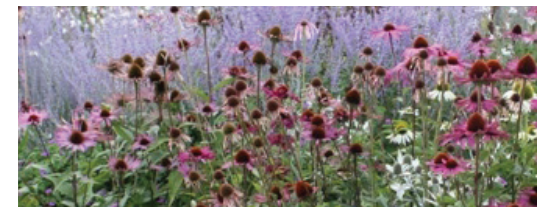
Note: All landscaping and improvements shown in public space are subject to final approval by the D.C. Department of Transportation.



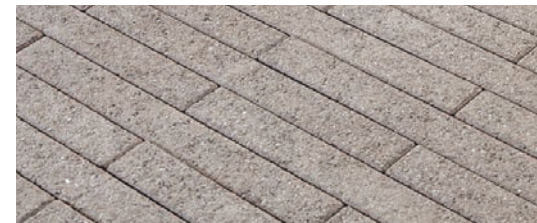
SECTION 'A-A' THROUGH TYPICAL ENTRY | SCALE: N.T.S.



MASONRY PLANTER WALLS



PERENNIAL PLANTING



PRECAST CONCRETE PAVERS



GROUNDCOVER



SMALL FLOWERING TREE

**Florida & Q Street, LLC**  
6820 Commercial Drive  
Springfield, VA 22151  
t: 703.750.6810 f: 703.750.6817

**Landscape Architecture Bureau**  
714 7th Street SE  
Washington, DC 20003  
t: 202.543.6553  
f: 202.543.6550

**AMT, LLC**  
10 G Street NE  
Suite 430  
Washington, DC 20002  
t: 202.289.4545  
f: 202.289.5051

**1600 North Capitol Street NW**  
Washington, DC 20002

REVISIONS	
1	PUD SUBMISSION 5/31/2013
2	PRE HEARING SUBMISSION 9/13/2013
3	
4	
5	
6	
7	
8	
9	
10	

DATE: 09/13/2013  
PROJECT NO: 2008-033  
DRAWN BY: TB  
CHECKED BY: JF

**Bonstra Haresign**  
ARCHITECTS

RESIDENTIAL GARDENS

1710 Connecticut Ave NW, Suite 400  
Washington, DC 20009-1123

www.bonstra.com 202 588 9373 T  
202 588 8122 F