

Courtyard + Stormwater
Planting - L-104

Retail/Residential Entry.
See L-105.

Existing streetlight on
Florida Ave. to remain, typ.

Residential Gardens.
See L-106.

Existing streetlight / traffic
signal to be replaced
(single Washington Globe)

Existing streetlight / traffic
signal to be replaced (double
Washington Globe)

Front entry area.
See L-103

Note: All landscaping and improvements shown in public space are
subject to final approval by the D.C. Department of Transportation.

Florida & Q Street, LLC
6820 Commercial Drive
Springfield, VA 22151
t: 703.750.6810 f: 703.750.6817

**Landscape
Architecture
Bureau**
714 7th Street SE
Washington, DC 20003
t: 202.543.6553
f: 202.543.6550

AMT, LLC
10 G Street NE
Suite 430
Washington, DC 20002
t: 202.289.4545
f: 202.289.5051

1600 North Capitol Street NW
Washington, DC 20002

REVISIONS	
1	PUD SUBMISSION 5/31/2013
2	PRE HEARING SUBMISSION 9/13/2013
3	
4	
5	
6	
7	
8	
9	
10	

DATE: 09/13/2013
PROJECT NO: 2008-033
DRAWN BY: TB
CHECKED BY: JF

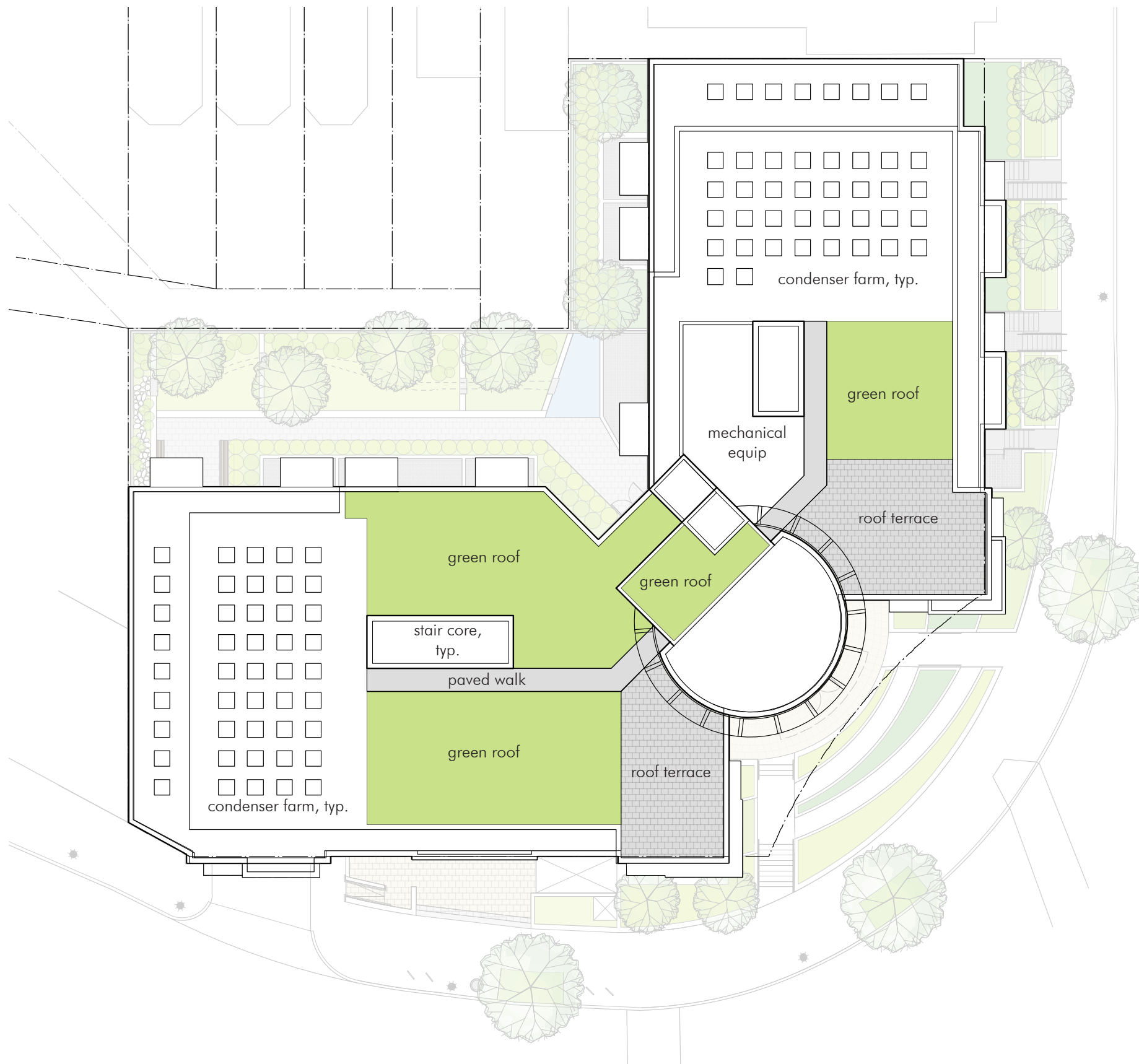
Bonstra | Haresign
ARCHITECTS
LANDSCAPE PLAN

1710 Connecticut Avenue, NW
Washington, DC 20009-1123

CONING COMMISSION
District of Columbia
CASE NO 06-04C
CASE NO 18A5

101

www.bonstra.com 202.588.9373 T 202.588.9373 F



VEGETATED GREEN ROOF SYSTEM



VEGETATED GREEN ROOF SYSTEM



PEDESTAL PAVERS

Florida & Q Street, LLC
 6820 Commercial Drive
 Springfield, VA 22151
 t: 703.750.6810 f: 703.750.6817

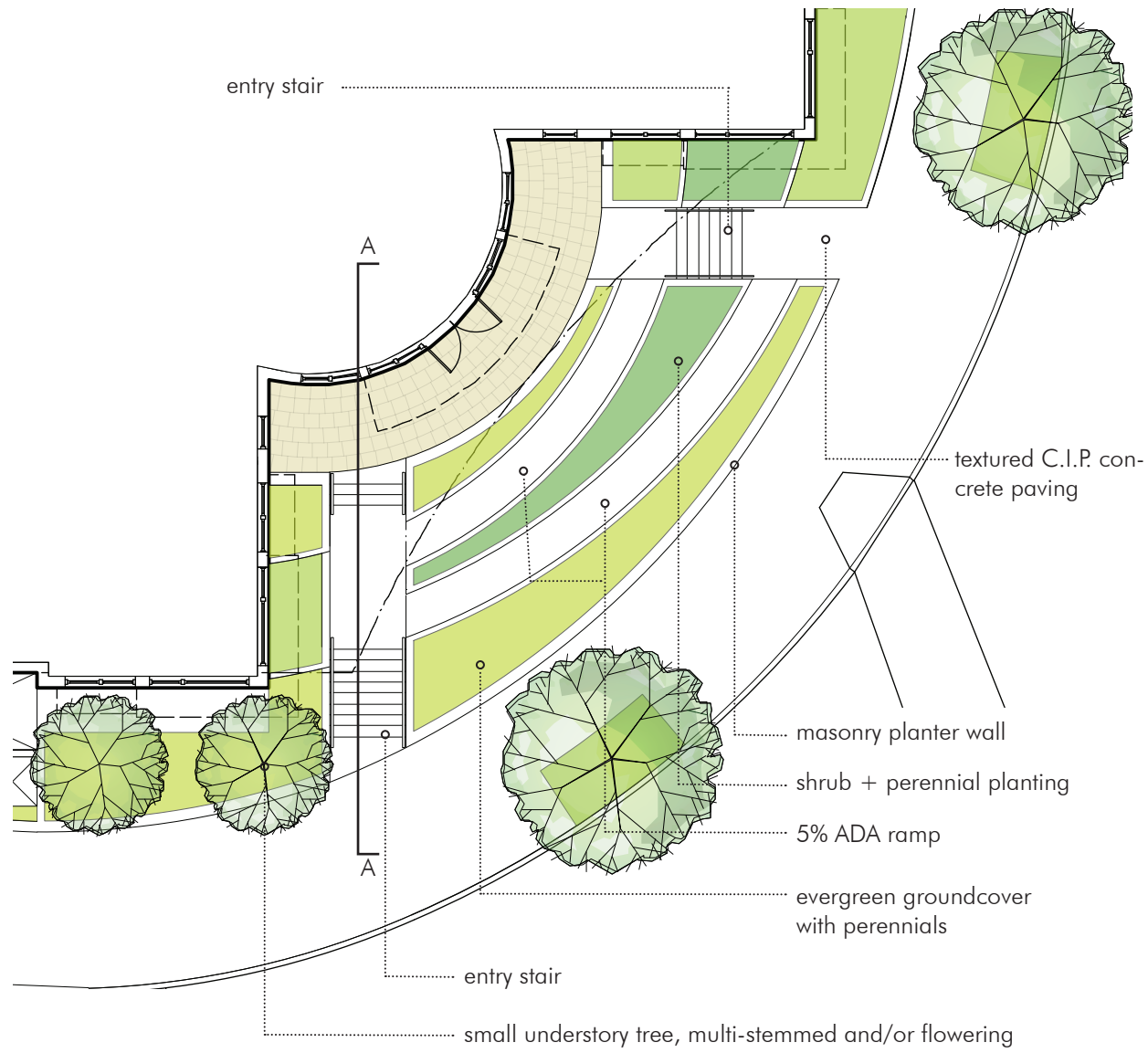
Landscape Architecture Bureau
 714 7th Street SE
 Washington, DC 20003
 t: 202.543.6553
 f: 202.543.6550

AMT, LLC
 10 G Street NE
 Suite 430
 Washington, DC 20002
 t: 202.289.4545
 f: 202.289.5051

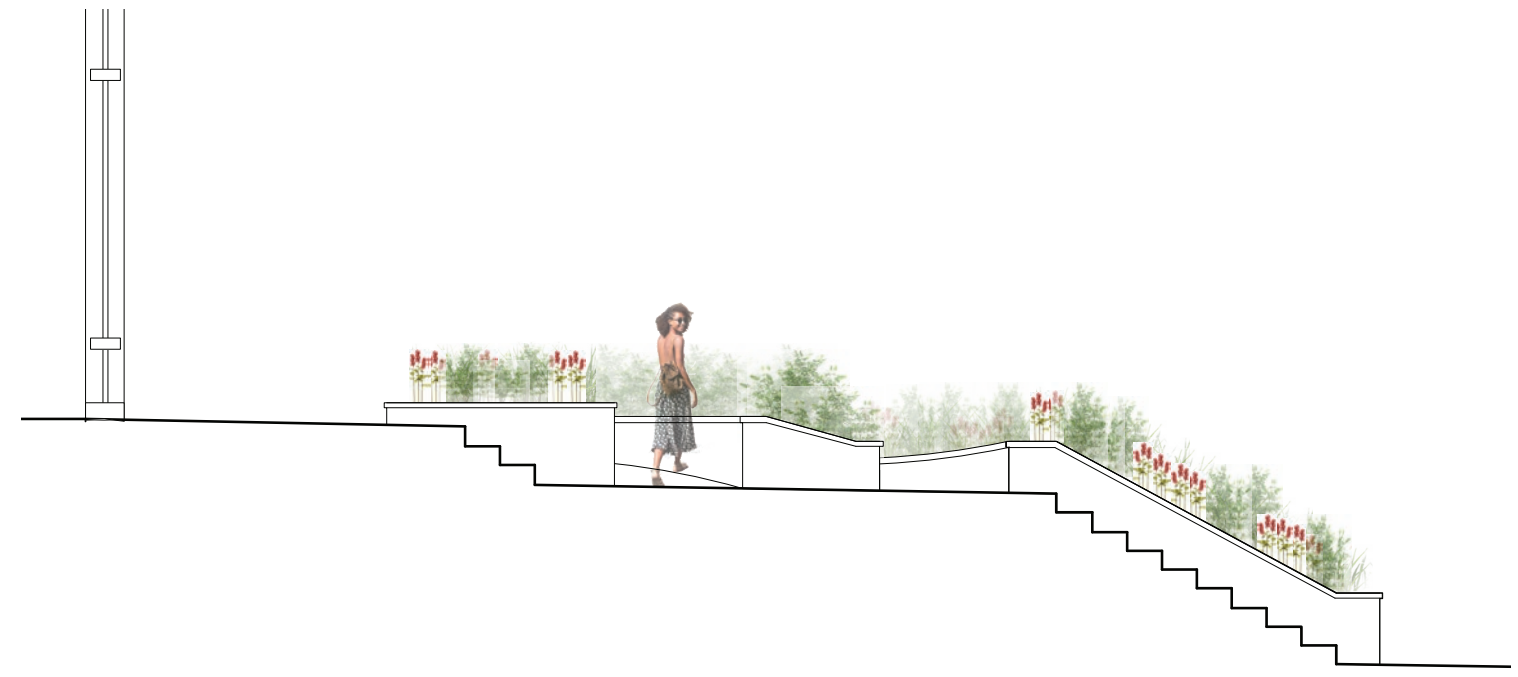
1600 North Capitol Street NW
 Washington, DC 20002

REVISIONS	
1	PUD SUBMISSION 5/31/2013
2	PRE HEARING
	SUBMISSION 9/13/2013
3	
4	
5	
6	
7	
8	
9	
10	

DATE: 09/13/2013
 PROJECT NO: 2008-033
 DRAWN BY: TB
 CHECKED BY: JF



PLAN | 1/16" = 1'-0"



SECTION 'A-A' THROUGH ENTRY STAIR | SCALE: N.T.S.



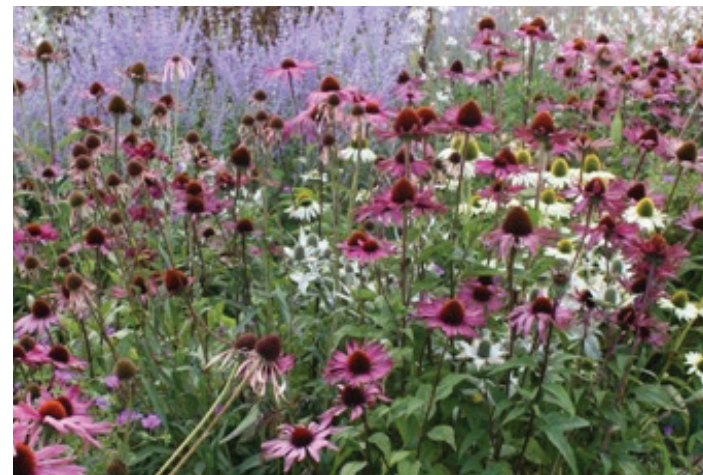
PRECAST UNIT PAVERS AT ENTRY



TEXTURED C.I.P. CONCRETE



GROUNDCOVER PLANTING



PERENNIAL PLANTING



ENTRY PLANTING CONCEPT



LITTER RECEPTACLE BY 'VICTOR STANLEY'



MASONRY PLANTER WALL

Note: All landscaping and improvements shown in public space are subject to final approval by the D.C. Department of Transportation.

Florida & Q Street, LLC
 6820 Commercial Drive
 Springfield, VA 22151
 t: 703.750.6810 f: 703.750.6817

Landscape Architecture Bureau
 714 7th Street SE
 Washington, DC 20003
 t: 202.543.6553
 f: 202.543.6550

AMT, LLC
 10 G Street NE
 Suite 430
 Washington, DC 20002
 t: 202.289.4545
 f: 202.289.5051

1600 North Capitol Street NW
 Washington, DC 20002

REVISIONS

1	PUD SUBMISSION	5/31/2013
2	PRE HEARING	
	SUBMISSION	9/13/2013
3		
4		
5		
6		
7		
8		
9		
10		

DATE: 09/13/2013
 PROJECT NO: 2008-033
 DRAWN BY: TTB
 CHECKED BY: JF