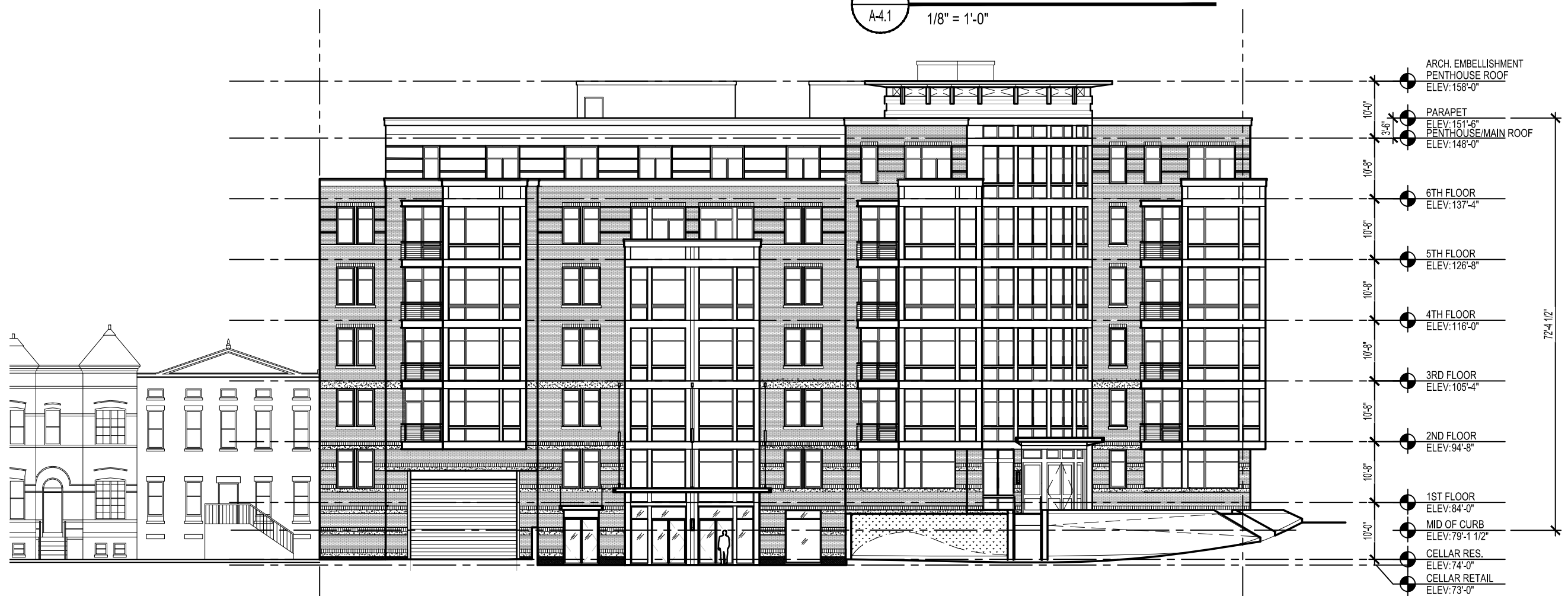
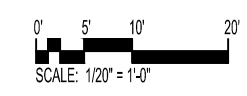


2 ENLARGED RETAIL ELEVATION
A-4.1 1/8" = 1'-0"



SEE SHEET A-6.1 FOR MATERIALS

1 FLORIDA AVENUE ELEVATION
A-4.1 1" = 20'



- ARCH. EMBELLISHMENT
PENTHOUSE ROOF
ELEV: 158'-0"
- 10'-0"
- PARAPET
ELEV: 151'-6"
- 3'-6"
- PENTHOUSE/MAIN ROOF
ELEV: 148'-0"
- 10'-3"
- 6TH FLOOR
ELEV: 137'-4"
- 10'-3"
- 5TH FLOOR
ELEV: 126'-8"
- 10'-3"
- 4TH FLOOR
ELEV: 116'-0"
- 10'-3"
- 3RD FLOOR
ELEV: 105'-4"
- 10'-3"
- 2ND FLOOR
ELEV: 94'-8"
- 10'-3"
- 1ST FLOOR
ELEV: 84'-0"
- 10'-0"
- MID OF CURB
ELEV: 79'-1 1/2"
- CELLAR RES.
ELEV: 74'-0"
- CELLAR RETAIL
ELEV: 73'-0"

Florida & Q Street, LLC
6820 Commercial Drive
Springfield, VA 22151
t: 703.750.8810 f: 703.750.8817

Landscape Architecture Bureau
714 7th Street SE
Washington, DC 20003
t: 202.543.6553
f: 202.543.6550

AMT, LLC
10 G Street NE
Suite 430
Washington, DC 20002
t: 202.289.4545
f: 202.289.5051

1600 North Capitol Street NW
Washington, DC 20002

REVISIONS

1	PUD SUBMISSION	5/31/2013
2	SUPPLEMENTAL PREHEARING SUBMISSION	9/13/2013
3		
4		
5		
6		
7		
8		
9		
10		

DATE:	09/13/2013
PROJECT NO:	2005-033
DRAWN BY:	JM, JH
CHECKED BY:	BB

Bonstra Haresign
ARCHITECTS

FLORIDA AVENUE ELEVATION

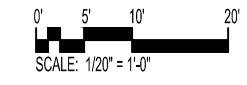
REVISIONS

1	PUD SUBMISSION	5/31/2013
2	SUPPLEMENTAL PREHEARING SUBMISSION	9/13/2013
3		
4		
5		
6		
7		
8		
9		
10		

DATE:	09/13/2013
PROJECT NO:	2005-033
DRAWN BY:	JM, JH
CHECKED BY:	BB



1
 A-4.2
NORTH CAPITOL ELEVATION
 1" = 20'



Bonstra Haresign
 ARCHITECTS

NORTH CAPITOL
 ELEVATION

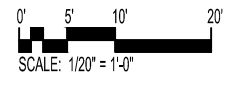
REVISIONS

1	PUD SUBMISSION	5/31/2013
2	SUPPLEMENTAL PREHEARING SUBMISSION	9/13/2013
3		
4		
5		
6		
7		
8		
9		
10		

DATE:	09/13/2013
PROJECT NO:	2005-033
DRAWN BY:	JM, JH
CHECKED BY:	BB



1 NORTH COURTYARD ELEVATION
 A-4.3 1" = 20'



Bonstra Haresign
 ARCHITECTS

NORTH COURTYARD ELEVATION

Florida & Q Street, LLC
 6820 Commercial Drive
 Springfield, VA 22151
 t: 703.750.8810 f: 703.750.8817

Landscape Architecture Bureau
 714 7th Street SE
 Washington, DC 20003
 t: 202.543.6553
 f: 202.543.6550

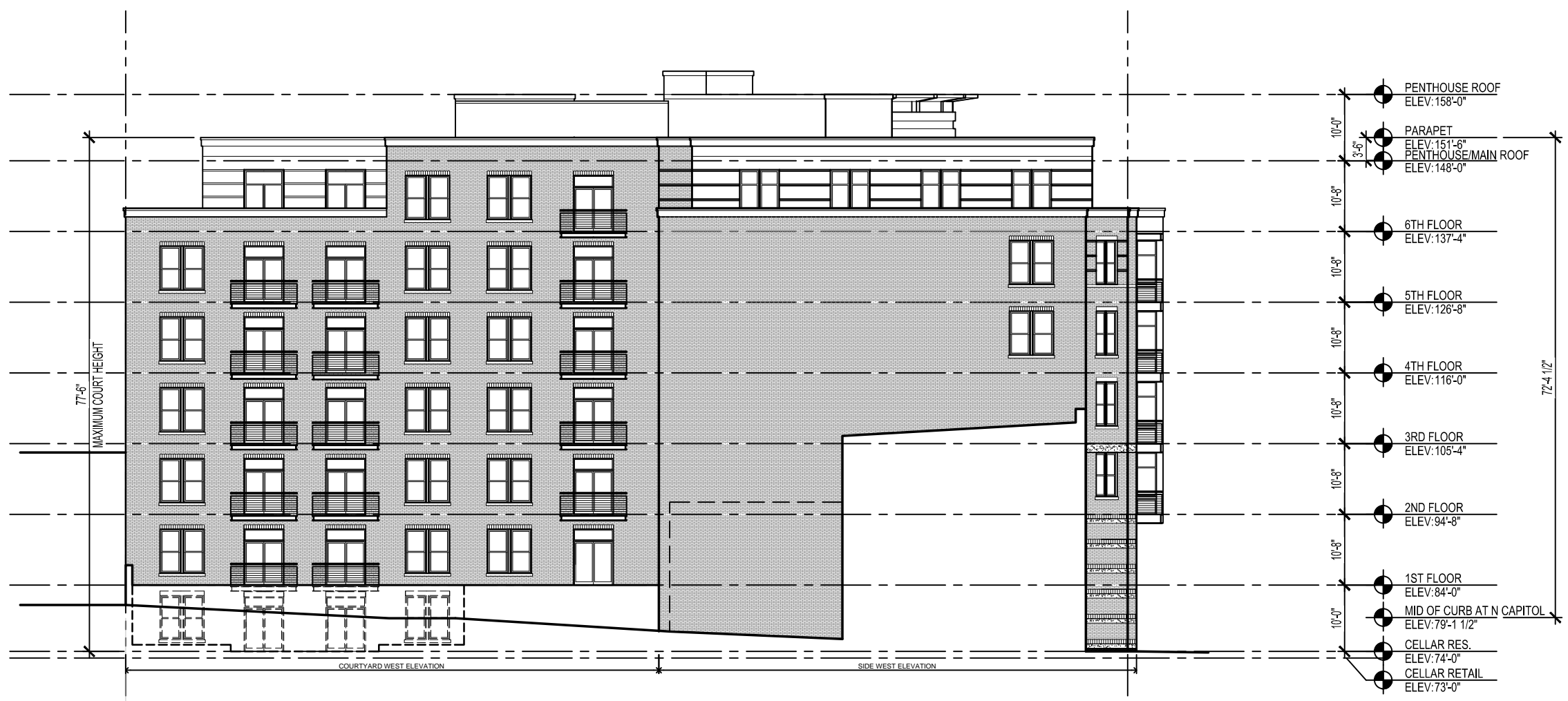
AMT, LLC
 10 G Street NE
 Suite 430
 Washington, DC 20002
 t: 202.289.4545
 f: 202.289.5051

1600 North Capitol Street NW
 Washington, DC 20002

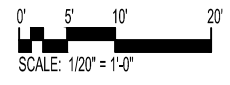
REVISIONS

1	PUD SUBMISSION	5/31/2013
2	SUPPLEMENTAL PREHEARING SUBMISSION	9/13/2013
3		
4		
5		
6		
7		
8		
9		
10		

DATE:	09/13/2013
PROJECT NO:	2005-033
DRAWN BY:	JM, JH
CHECKED BY:	BB



1 WEST COURTYARD ELEVATION
 A-4.4
 1" = 20'



Bonstra Haresign
 ARCHITECTS

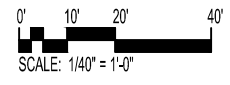
WEST COURTYARD ELEVATION



1 NORTH CAPITOL STREET ELEVATION
A-4.5 1" = 40'



1 FLORIDA AVENUE ELEVATION
A-4.5 1" = 40'



Florida & Q Street, LLC
6820 Commercial Drive
Springfield, VA 22151
t: 703.750.8810 f: 703.750.8817

Landscape Architecture Bureau
714 7th Street SE
Washington, DC 20003
t: 202.543.6553 f: 202.543.6550

AMT, LLC
10 G Street NE
Suite 430
Washington, DC 20002
t: 202.289.4545 f: 202.289.5051

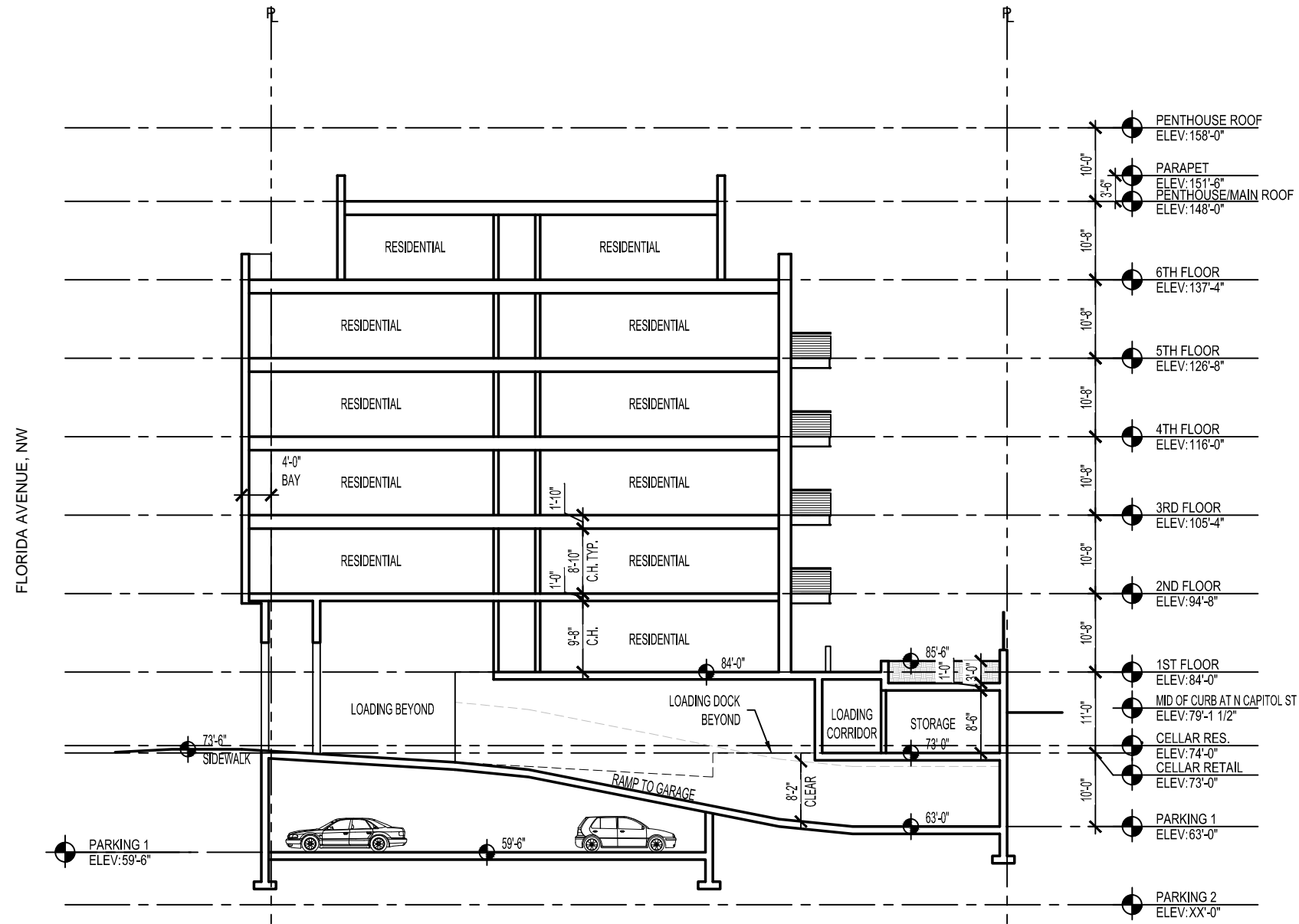
1600 North Capitol Street NW
Washington, DC 20002

REVISIONS	
1	PUD SUBMISSION 5/31/2013
2	SUPPLEMENTAL PREHEARING SUBMISSION 9/13/2013
3	
4	
5	
6	
7	
8	
9	
10	

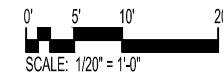
DATE:	09/13/2013
PROJECT NO.:	2005-033
DRAWN BY:	JM, JH
CHECKED BY:	BB

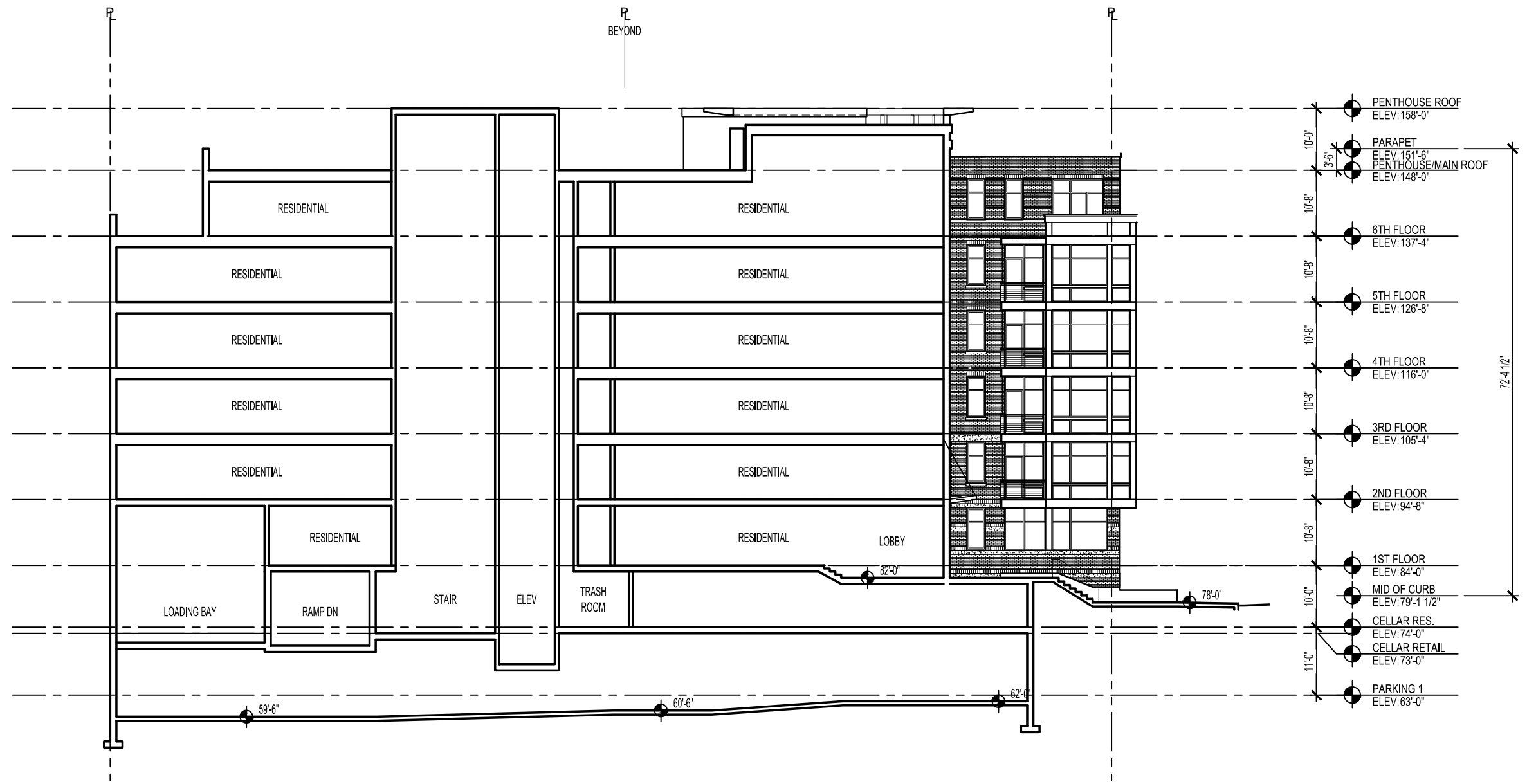
REVISIONS	
1	PUD SUBMISSION 5/31/2013
2	SUPPLEMENTAL PREHEARING SUBMISSION 9/13/2013
3	
4	
5	
6	
7	
8	
9	
10	

DATE:	09/13/2013
PROJECT NO:	2005-033
DRAWN BY:	JM, JH
CHECKED BY:	BB



1 BUILDING SECTION
 A-5.1
 1" = 20'
 SEE PLAN SHEETS A-3.1 - A-3.8 FOR LOCATION OF SECTION CUT





- PENTHOUSE ROOF
ELEV: 158'-0"
- PARAPET
ELEV: 151'-6"
- PENTHOUSE/MAIN ROOF
ELEV: 148'-0"
- 6TH FLOOR
ELEV: 137'-4"
- 5TH FLOOR
ELEV: 126'-8"
- 4TH FLOOR
ELEV: 116'-0"
- 3RD FLOOR
ELEV: 105'-4"
- 2ND FLOOR
ELEV: 94'-8"
- 1ST FLOOR
ELEV: 84'-0"
- MID OF CURB
ELEV: 79'-1 1/2"
- CELLAR RES.
ELEV: 74'-0"
- CELLAR RETAIL
ELEV: 73'-0"
- PARKING 1
ELEV: 63'-0"

Florida & Q Street, LLC
 6820 Commercial Drive
 Springfield, VA 22151
 t: 703.750.8810 f: 703.750.8817

Landscape Architecture Bureau
 714 7th Street SE
 Washington, DC 20003
 t: 202.543.6553
 f: 202.543.6550

AMT, LLC
 10 G Street NE
 Suite 430
 Washington, DC 20002
 t: 202.289.4545
 f: 202.289.5051

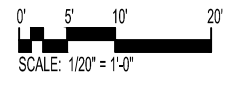
1600 North Capitol Street NW
 Washington, DC 20002

REVISIONS

1	PUD SUBMISSION	5/31/2013
2	SUPPLEMENTAL PREHEARING SUBMISSION	9/13/2013
3		
4		
5		
6		
7		
8		
9		
10		

DATE:	09/13/2013
PROJECT NO:	2005-033
DRAWN BY:	JM, JH
CHECKED BY:	BB

1 BUILDING SECTION
 A-5.2
 1" = 20'
 SEE PLAN SHEETS A-3.1 - A-3.8 FOR LOCATION OF SECTION CUT



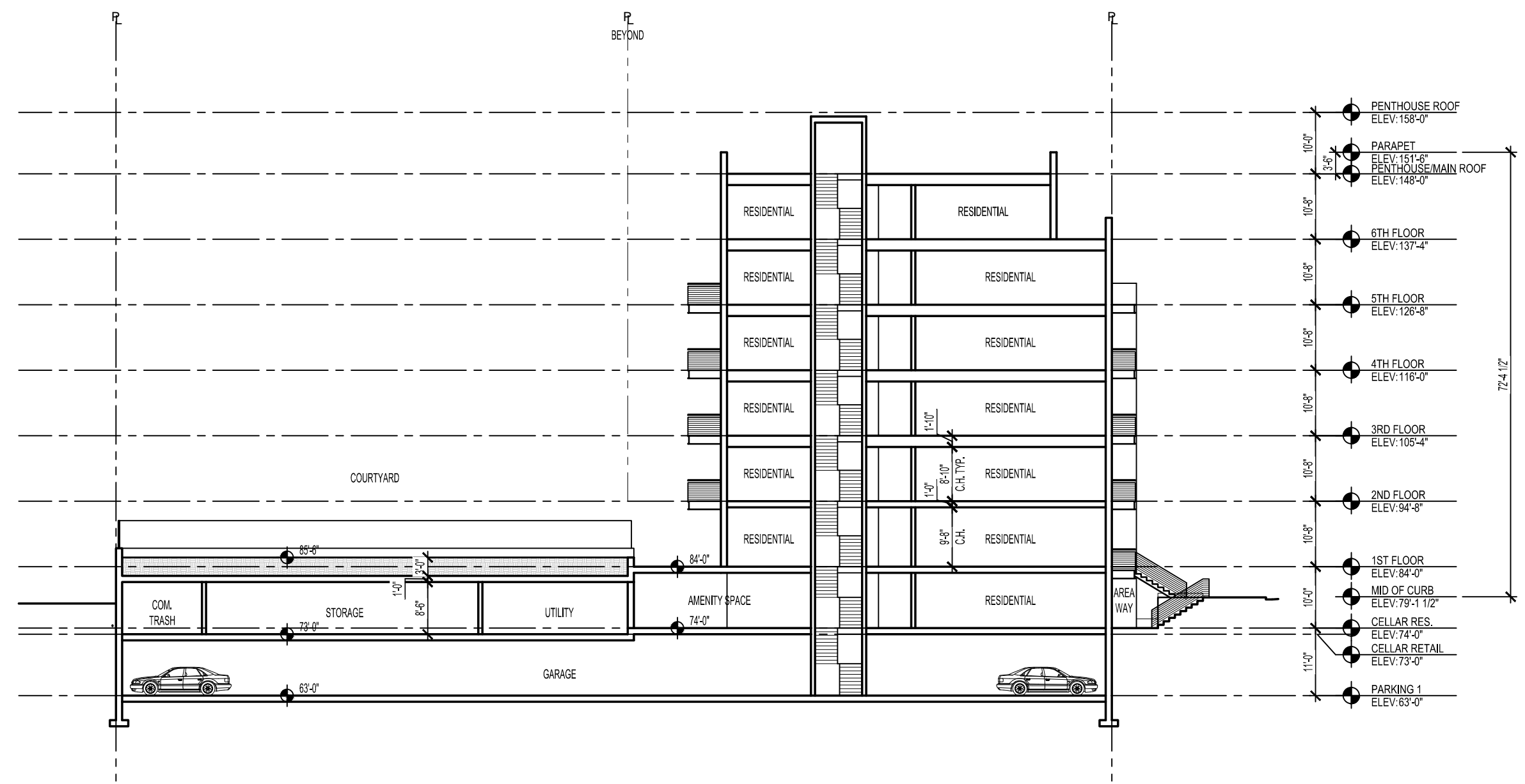
Bonstra Haresign
 ARCHITECTS

BUILDING SECTION

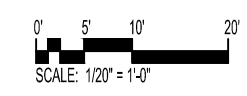
REVISIONS

1	PUD SUBMISSION	5/31/2013
2	SUPPLEMENTAL PREHEARING SUBMISSION	9/13/2013
3		
4		
5		
6		
7		
8		
9		
10		

DATE:	09/13/2013
PROJECT NO:	2005-033
DRAWN BY:	JM, JH
CHECKED BY:	BB



1
A-5.3
BUILDING SECTION
 1" = 20'
 SEE PLAN SHEETS A-3.1 - A-3.8 FOR LOCATION OF SECTION CUT





- METAL PANEL COPING CEMENTITIOUS PANEL
- PRECAST STONE
- ACCENT BRICK, DARK OVER LIGHT
- METAL PANEL
- PRECAST STONE
- METAL PANEL
- LIGHT ACCENT BRICK
- ACCENT STONE
- ACCENT STONE
- FIELD BRICK
- GRANITE BASE



- METAL PANEL COPING CEMENTITIOUS PANEL
- PRECAST STONE
- ACCENT BRICK, DARK OVER LIGHT
- METAL PANEL
- FIELD BRICK
- ALUMINUM WINDOW
- PRECAST STONE
- LIGHT ACCENT BRICK
- ACCENT STONE
- ACCENT STONE
- FIELD BRICK

Florida & Q Street, LLC
 6820 Commercial Drive
 Springfield, VA 22151
 t: 703.750.8810 f: 703.750.8817

Landscape Architecture Bureau
 714 7th Street SE
 Washington, DC 20003
 t: 202.543.6553 f: 202.543.6550

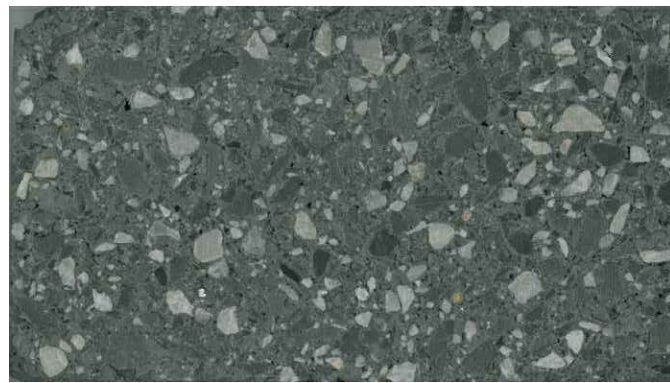
AMT, LLC
 10 G Street NE
 Suite 430
 Washington, DC 20002
 t: 202.289.4545 f: 202.289.5051

1600 North Capitol Street NW
 Washington, DC 20002

REVISIONS

1	PUD SUBMISSION	5/31/2013
2	SUPPLEMENTAL PREHEARING SUBMISSION	9/13/2013
3		
4		
5		
6		
7		
8		
9		
10		

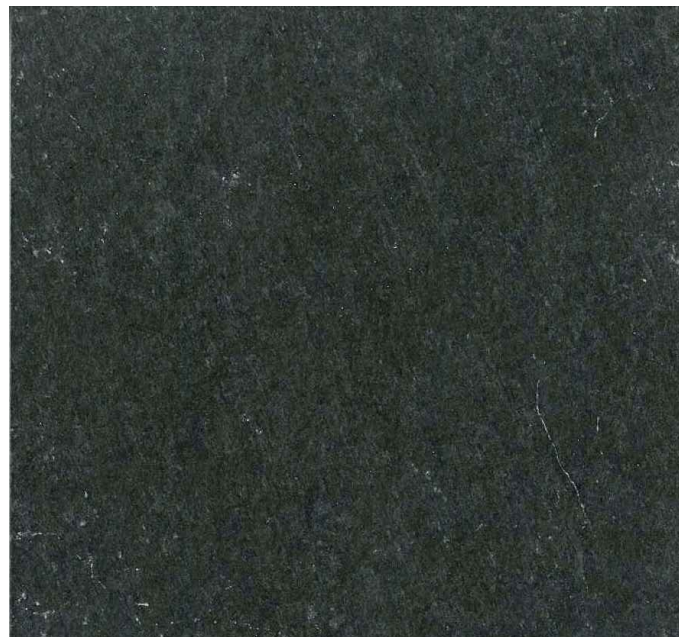
DATE:	09/13/2013
PROJECT NO:	2005-033
DRAWN BY:	JM, JH
CHECKED BY:	BB



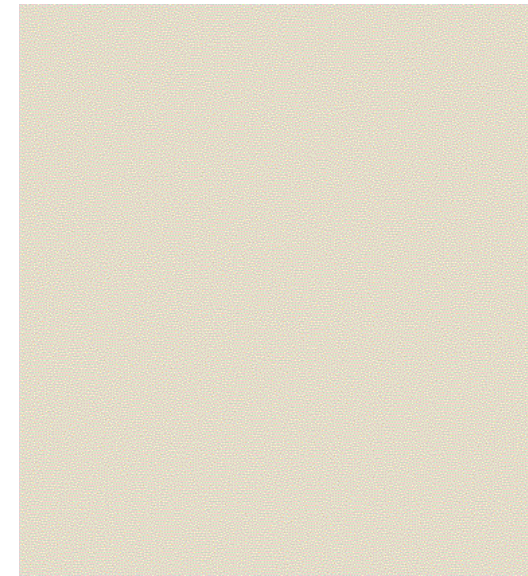
ACCENT STONE



PRECAST STONE



GRANITE BASE



METAL PANEL, CEMENTITIOUS PANEL



ALUMINUM WINDOW FRAME



BRICK

ACCENT BRICK

ACCENT BRICK

FIELD BRICK

Florida & Q Street, LLC
 6820 Commercial Drive
 Springfield, VA 22151
 t: 703.750.8810 f: 703.750.8817

Landscape Architecture Bureau
 714 7th Street SE
 Washington, DC 20003
 t: 202.543.6553
 f: 202.543.6550

AMT, LLC
 10 G Street NE
 Suite 430
 Washington, DC 20002
 t: 202.289.4545
 f: 202.289.5051

1600 North Capitol Street NW
 Washington, DC 20002

REVISIONS	
1	PUD SUBMISSION 5/31/2013
2	SUPPLEMENTAL PREHEARING SUBMISSION 9/13/2013
3	
4	
5	
6	
7	
8	
9	
10	

DATE:	09/13/2013
PROJECT NO:	2005-033
DRAWN BY:	JM, JH
CHECKED BY:	BB