



POTOMAC QUAY - IMAGE FOR COMPARISON



Reference Project


Project:
1562

Westfield London

The Westfield Development Area in London, comprises a total of 43 acres, representing one of the biggest redevelopment opportunities in London.

The seele scope of works includes the Design & Build Contract for the "Street" glazed roofing, related Clerestory facades and the glazed Entries, totalling approximately 20,000m².

The streets (or malls) are typically designed with a structural grid system. Their form is to be a relatively shallow vaulted roof springing from the structural grid that is 3m behind the shop front. This vault rises over two grids (16 m) and Steps to longitudinally form a saw tooth arrangement. The roof structure systems shall each span laterally 24m across the mall and 16m in the direction of the mall.

The Entries structures employ the same grid structural roof systems, as described above. They each consist of individual, slightly vaulted, sloped glazed canopies / lobbies.

Client:

Whitcity (Shepherds Bush)
General Partners Ltd
6 Floor MidCity Place
1 High Holborn
London WC1V 6EA

Architects:

Buchan Group International pty Ltd
White City Office Address
Benoy,
210 High Holborn,
London WC1V 7DL
Ian Ritchie Architects,
110 Three Colt Street,
London E14 8AZ

Project Management:

Second London Wall
Project Management Ltd.
Hammersmith Studios
55a Yeldham Road
London W6 8JF

General Contractor:

Westfield Shoppingtowns Ltd
6 Floor MidCity Place
71 High Holborn
London WC1V 6EA

Structural Engineers:

Robert Bird & Partner Ltd
25 Buckingham Palace Rd
London, SW1 0PP

Execution:

2006 -2007

PRECEDENT FOR QUAY ROOF - DIGITAL MODEL

ZONIN CO ISSION CASE NO. 04-14C/01-31TE/98-17F/95-1 P
100 BLOCK. POTO AC AVE. SE

DAVIS BUCKLEY ARCHITECTS AND PLANNERS

FLORIDA ROCK PROPERTIES, INC| SPARKS, D

River Front
on the anacostia

POST HEARING SUBMISSION
1 AY 2008

ZONING COMMISSION
District of Columbia
CASE NO.04-14
EXHIBIT NO.100B

33a

Filigree structures in steel and glass

Westfield - London

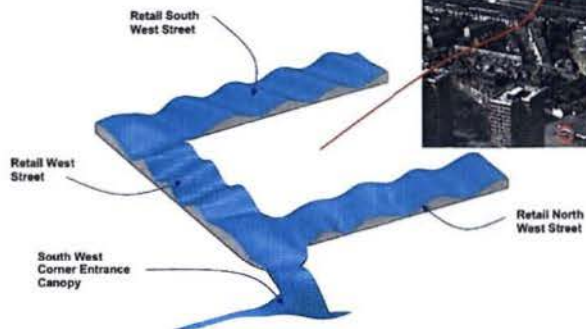
STREET VIEW FROM ABOVE – COMPLIANT VERSION



PRECEDENT FOR QUAY ROOF - STRUCTURE

ZONING CASE NO. 04-14C/01-31TE/98-17F/95-1 P
100 BLOCK, POTOMAC AVE, SE
DAVIS BUCKLEY ARCHITECTS AND PLANNERS

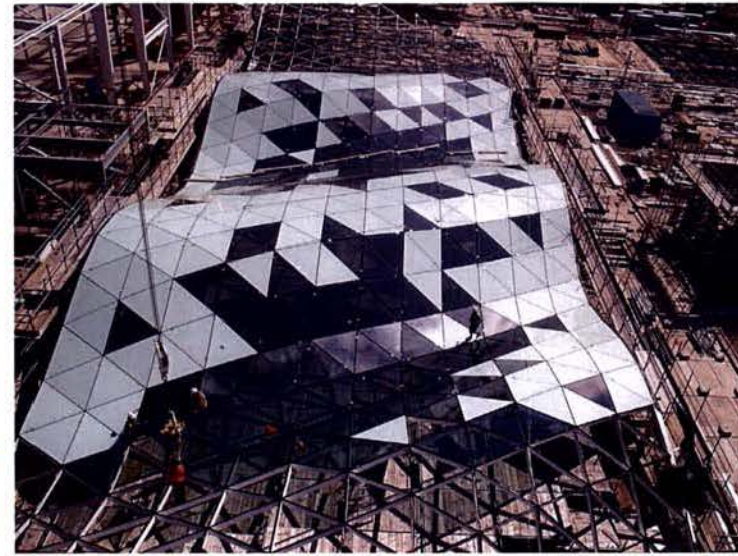
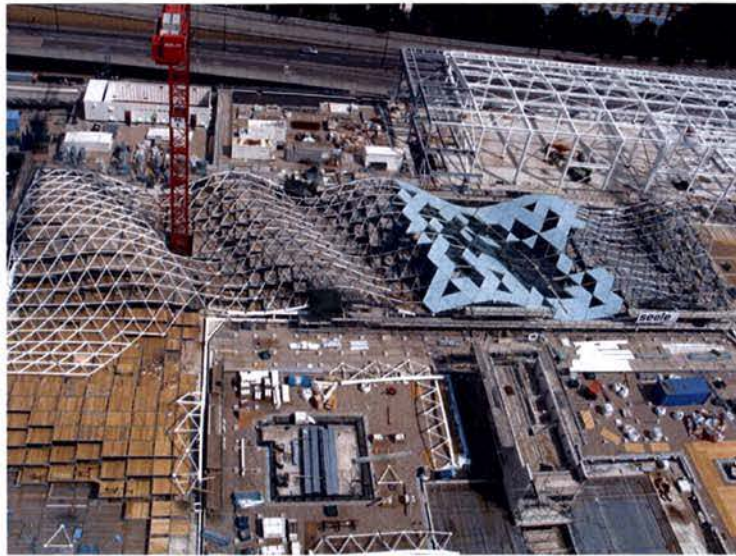
Right:
Aerial rendering of
Westfield, London



Below & Right:
Photographs of the full-scale
mock-up from a typical section of
the roof, installed at seele
Gersthofen in December 2007.



Reference Project



Reference Project



On this page:

On-site photographs at Westfield (August / Sept 07)