



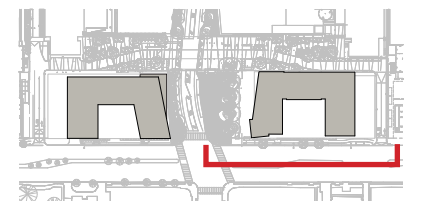
- T.O. MECH PH SCREEN
166.88'
- LEVEL MECH PH
159.88'
- MAIN ROOF
146.88'
- LEVEL 12
135.88'
- LEVEL 11
126.21'
- LEVEL 10
116.55'
- LEVEL 9
106.88'
- LEVEL 8
97.21'
- LEVEL 7
87.55'
- LEVEL 6
77.88'
- LEVEL 5
68.21'
- LEVEL 4
58.55'
- LEVEL 3
48.88'
- LEVEL 2
36.88'
- LEVEL 1
21.08'
- MEASURING POINT
19.88'

C
85

D
86

E
87

0 16' 32' 48' 64'
1/32" = 1'-0"



SOUTHEAST + SOUTHWEST M STREET PARCELS
FIRST-STAGE PUD MODIFICATION & SECOND-STAGE PUD APPLICATION

July 2, 2018

Perkins Eastman DC

EAST BLDG (375) - SOUTH ELEVATION

375 & 425 M STREET SW
ZONING COMMISSION
District of Columbia
CASE NO.02-381
EXHIBIT NO.131G8

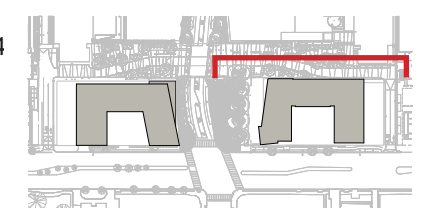
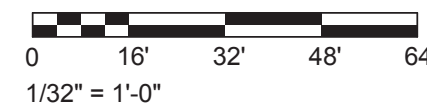




F
88

G
89

H
90

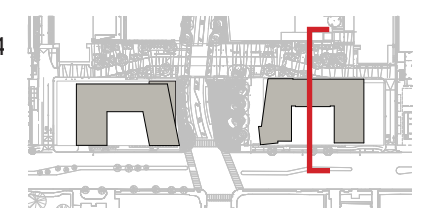
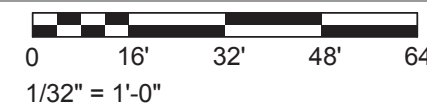
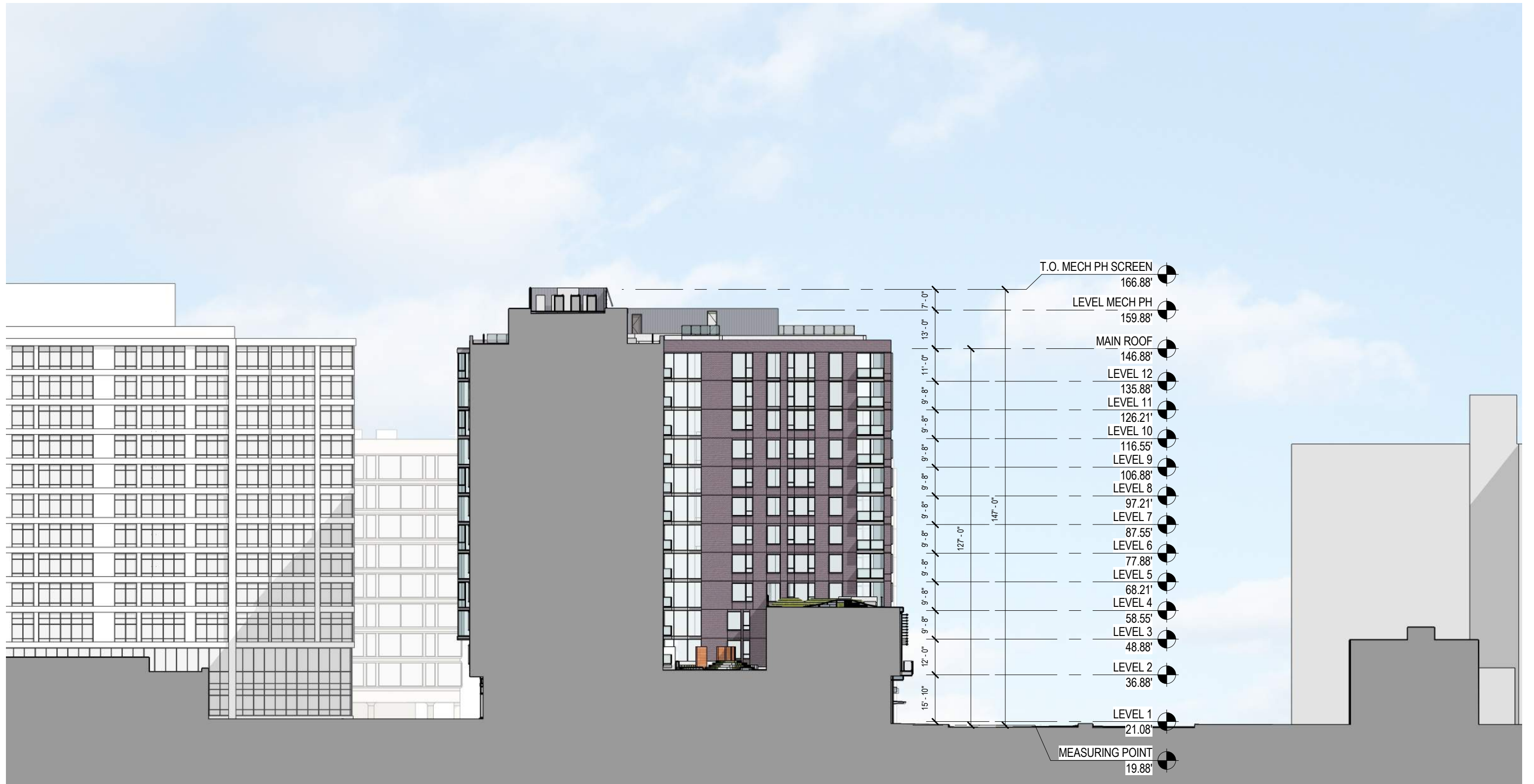


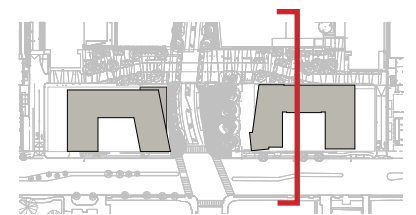
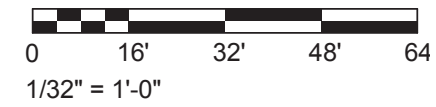
SOUTHEAST + SOUTHWEST M STREET PARCELS
FIRST-STAGE PUD MODIFICATION & SECOND-STAGE PUD APPLICATION

July 2, 2018

Perkins Eastman DC

EAST BLDG (375) - NORTH ELEVATION
375 & 425 M STREET SW





ALUMINUM GLAZING SYSTEM

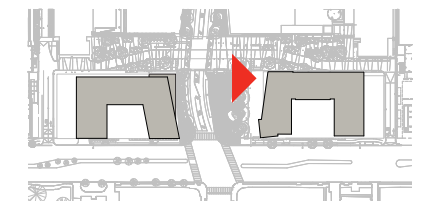
MASONRY TYPE "A"

METAL PANELING

STRUCTURALLY GLAZED STOREFRONT SYSTEM

ALUMINUM GLAZING SYSTEM

GRANITE BASE



MATCH LINE 84

ALUMINUM GLAZING SYSTEM

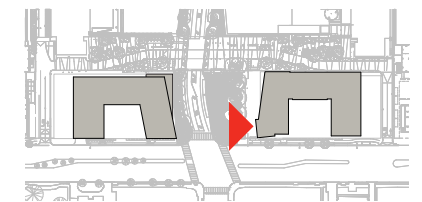
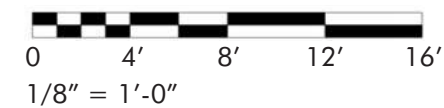
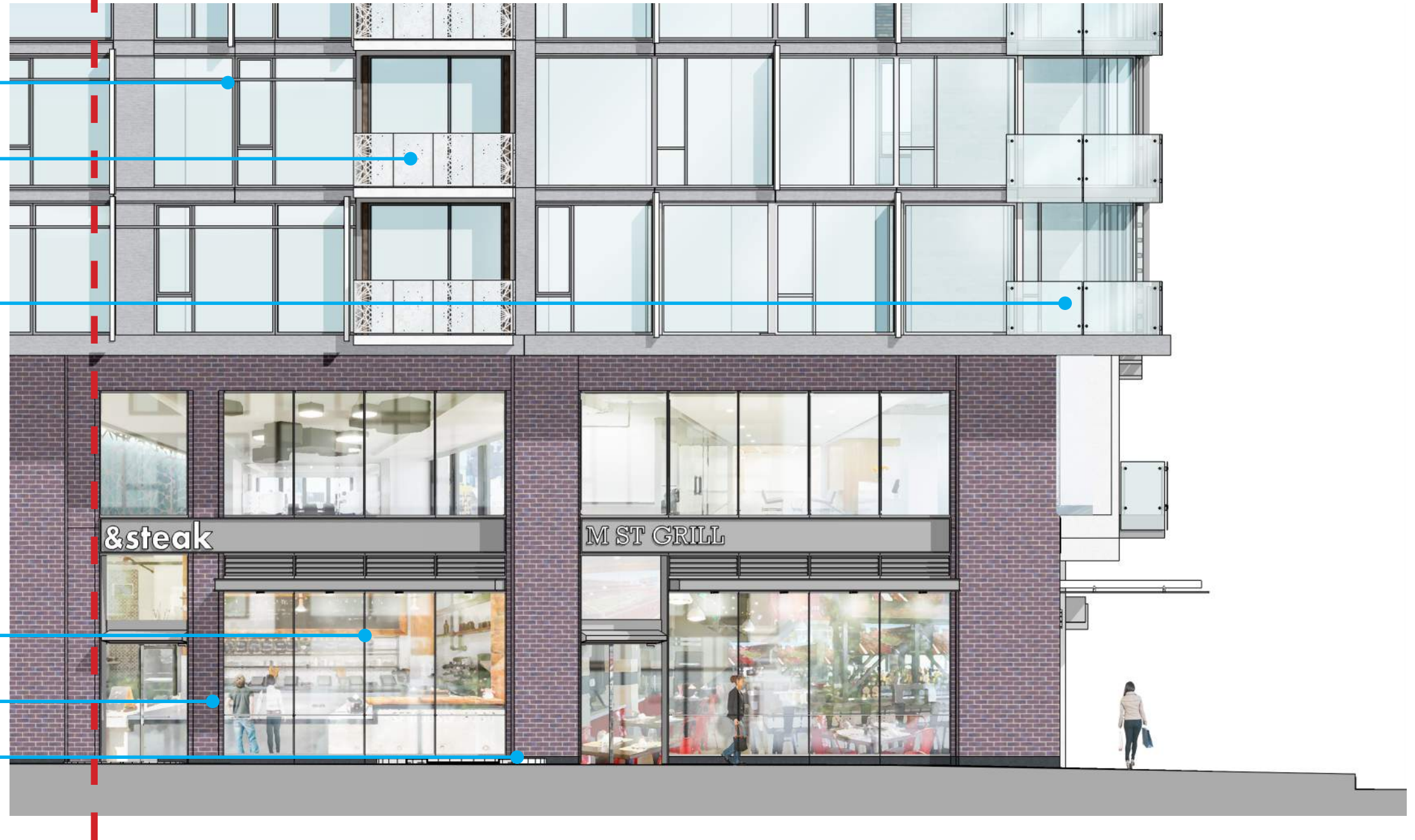
METAL BALCONY RAILING

GLASS BALCONY RAILING

ALUMINUM GLAZING SYSTEM

MASONRY TYPE "A"

GRANITE BASE



MASONRY TYPE "A"

ALUMINUM WINDOW

ALUMINUM GLAZING SYSTEM

GLASS BALCONY RAILING

MASONRY TYPE "A"

ALUMINUM GLAZING SYSTEM

MASONRY TYPE "B"

GRANITE BASE

