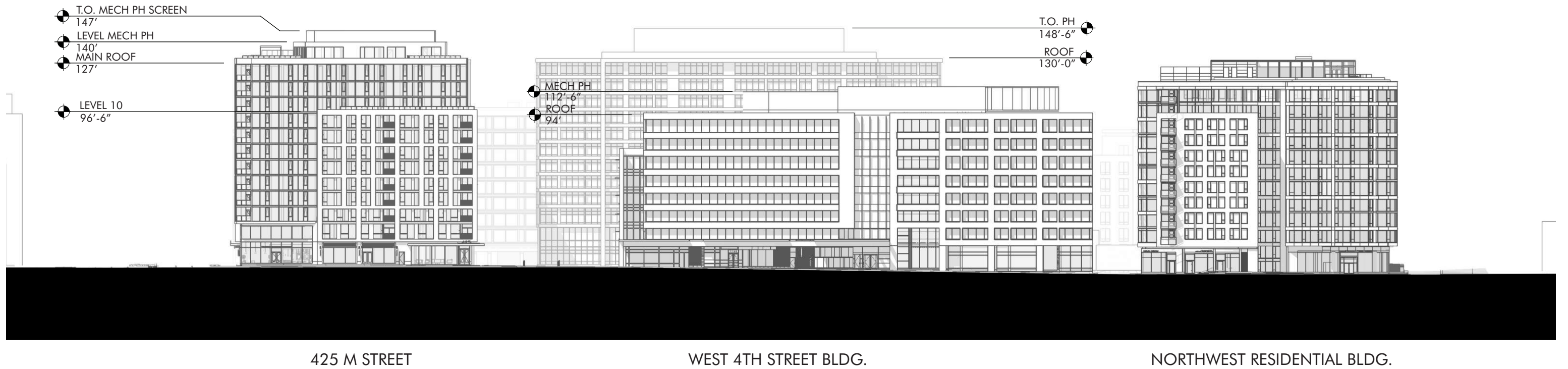
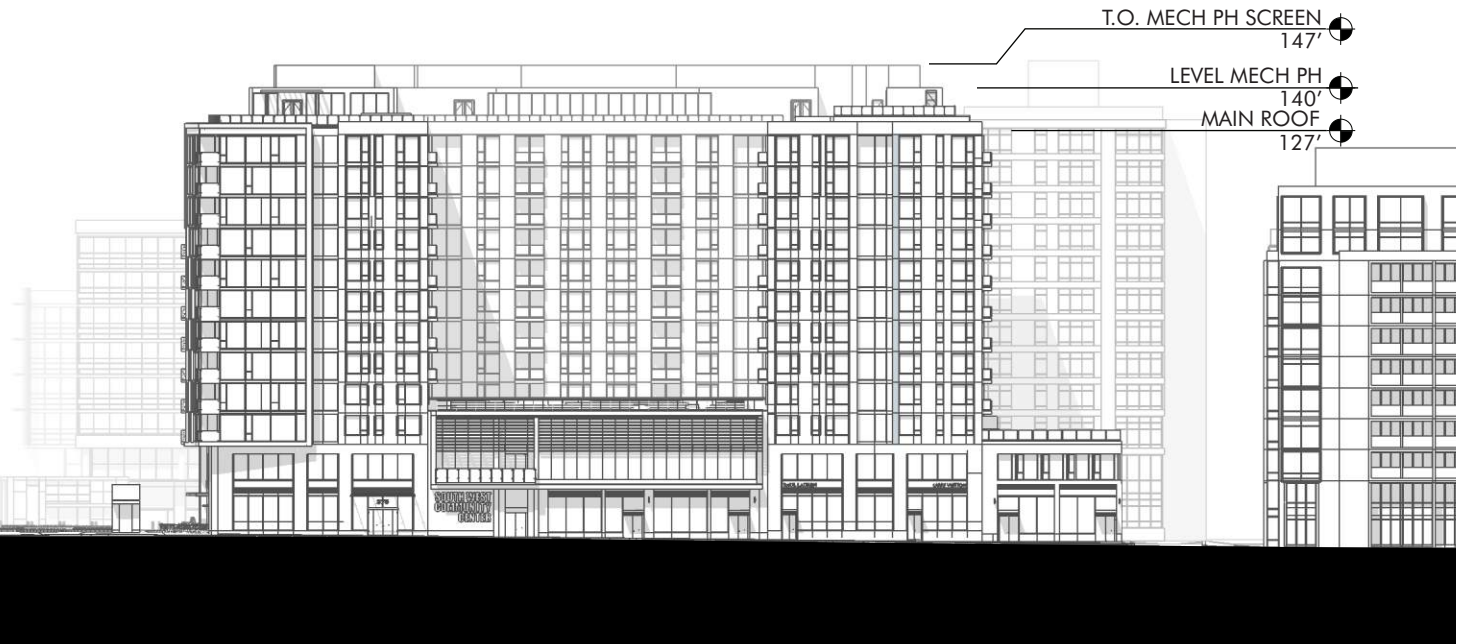


# STAGE 2 PUD - ELEVATIONS





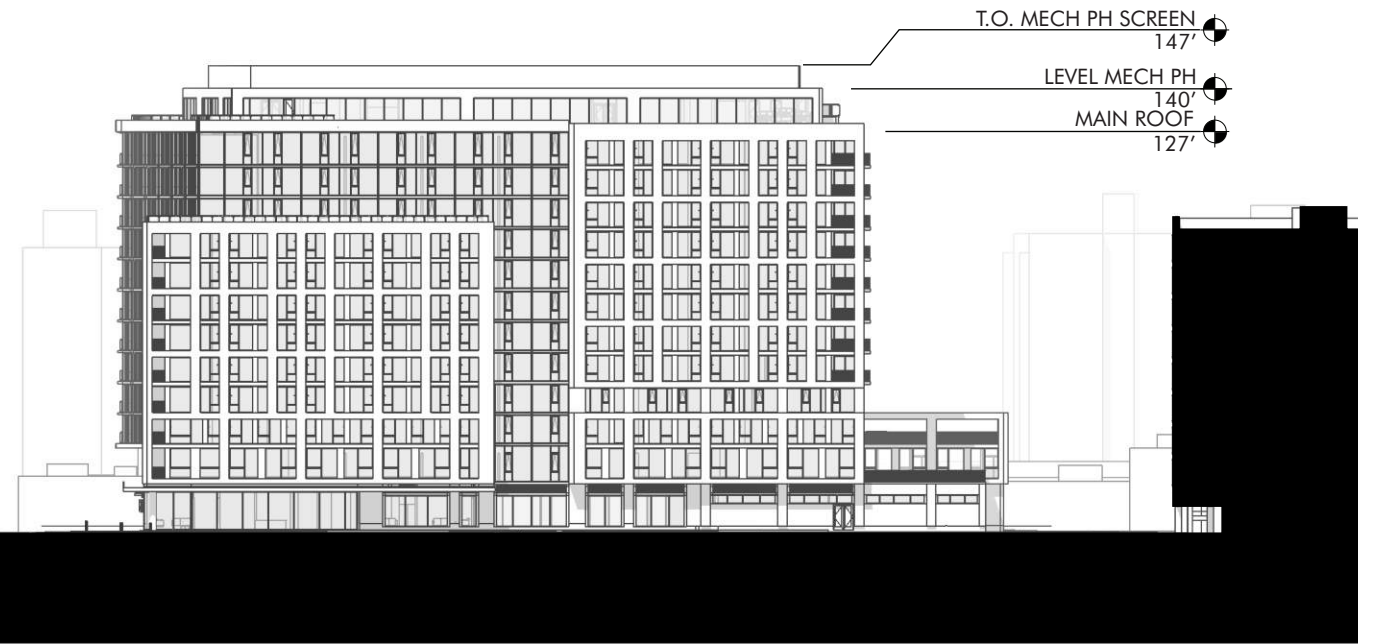
425 M STREET



375 M STREET



425 M STREET



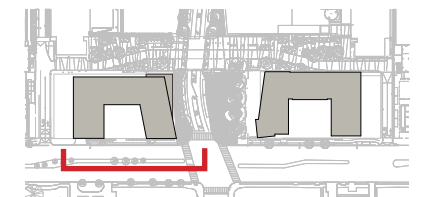
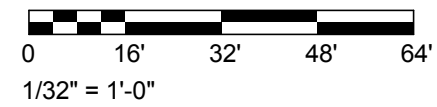
375 M STREET



A  
59

B  
60

C  
61



SOUTHEAST + SOUTHWEST M STREET PARCELS  
FIRST-STAGE PUD MODIFICATION & SECOND-STAGE PUD APPLICATION

MARCH 16, 2018

Perkins Eastman DC

WEST BLDG (425) - SOUTH ELEVATION

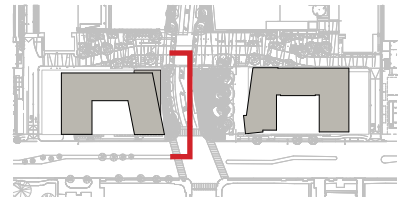
375 & 425 M STREET SW



- T.O. MECH PH SCREEN  
166.88'
- LEVEL MECH PH  
159.88'
- MAIN ROOF  
146.88'
- LEVEL 12  
135.88'
- LEVEL 11  
126.21'
- LEVEL 10  
116.55'
- LEVEL 9  
106.88'
- LEVEL 8  
97.21'
- LEVEL 7  
87.55'
- LEVEL 6  
77.88'
- LEVEL 5  
68.21'
- LEVEL 4  
58.55'
- LEVEL 3  
48.88'
- LEVEL 2  
36.88'
- LEVEL 1  
21.96'
- MEASURING POINT  
19.88'

D  
62

E  
63



SOUTHEAST + SOUTHWEST M STREET PARCELS  
FIRST-STAGE PUD MODIFICATION & SECOND-STAGE PUD APPLICATION

MARCH 16, 2018

Perkins Eastman DC

WEST BLDG (425) - EAST ELEVATION

375 & 425 M STREET SW



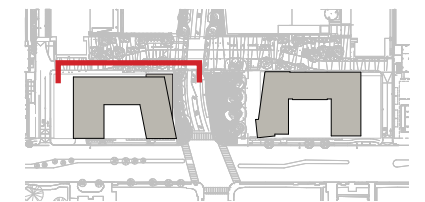
- T.O. MECH PH SCREEN  
166.88'
- LEVEL MECH PH  
159.88'
- MAIN ROOF  
146.88'
- LEVEL 12  
135.88'
- LEVEL 11  
126.21'
- LEVEL 10  
116.55'
- LEVEL 9  
106.88'
- LEVEL 8  
97.21'
- LEVEL 7  
87.55'
- LEVEL 6  
77.88'
- LEVEL 5  
68.21'
- LEVEL 4  
58.55'
- LEVEL 3  
48.88'
- LEVEL 2  
36.88'
- LEVEL 1  
21.96'
- MEASURING POINT  
19.88'

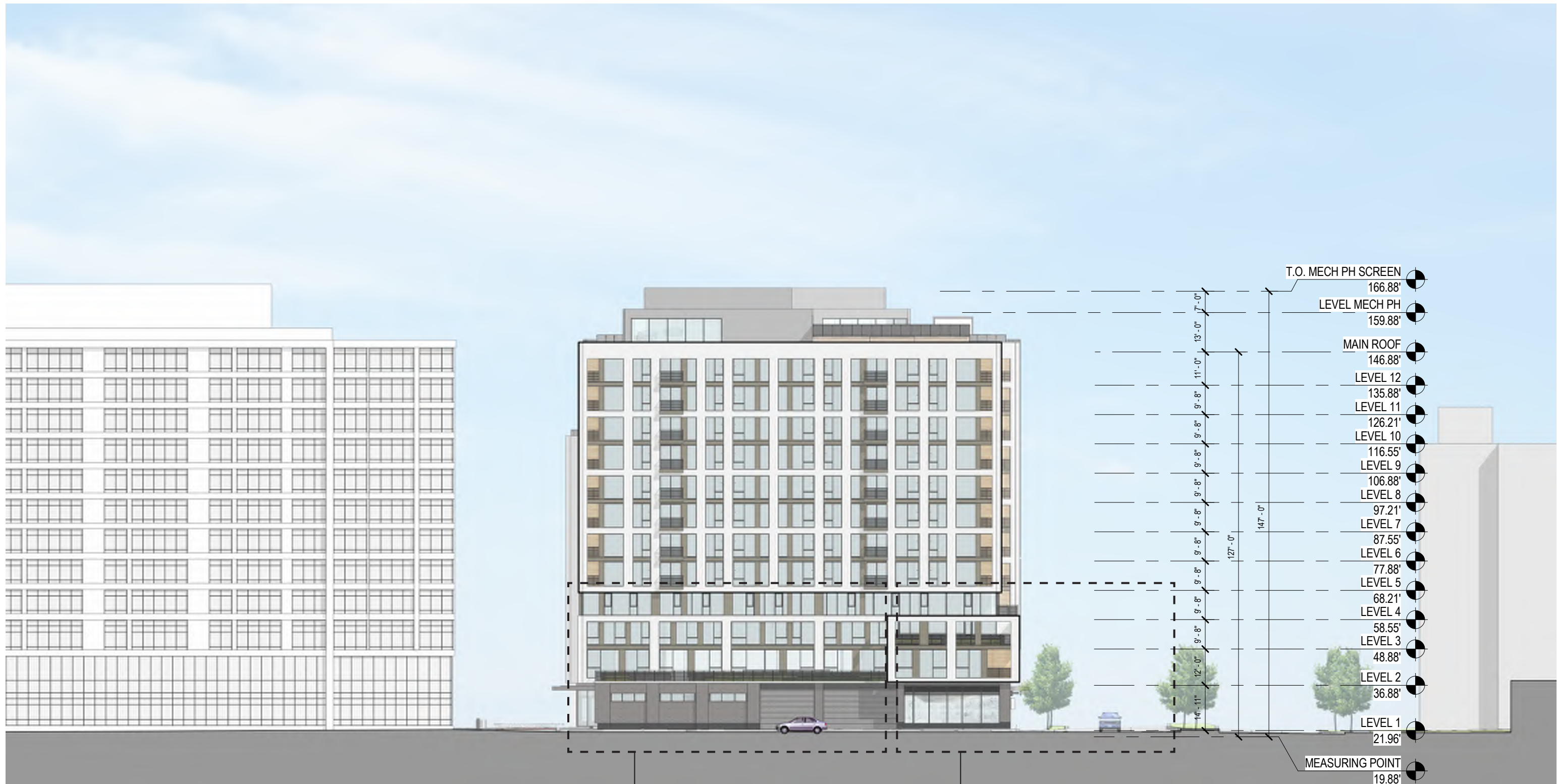
F  
64

G  
65

H  
66

0 16' 32' 48' 64'  
1/32" = 1'-0"





I  
67

J  
68

