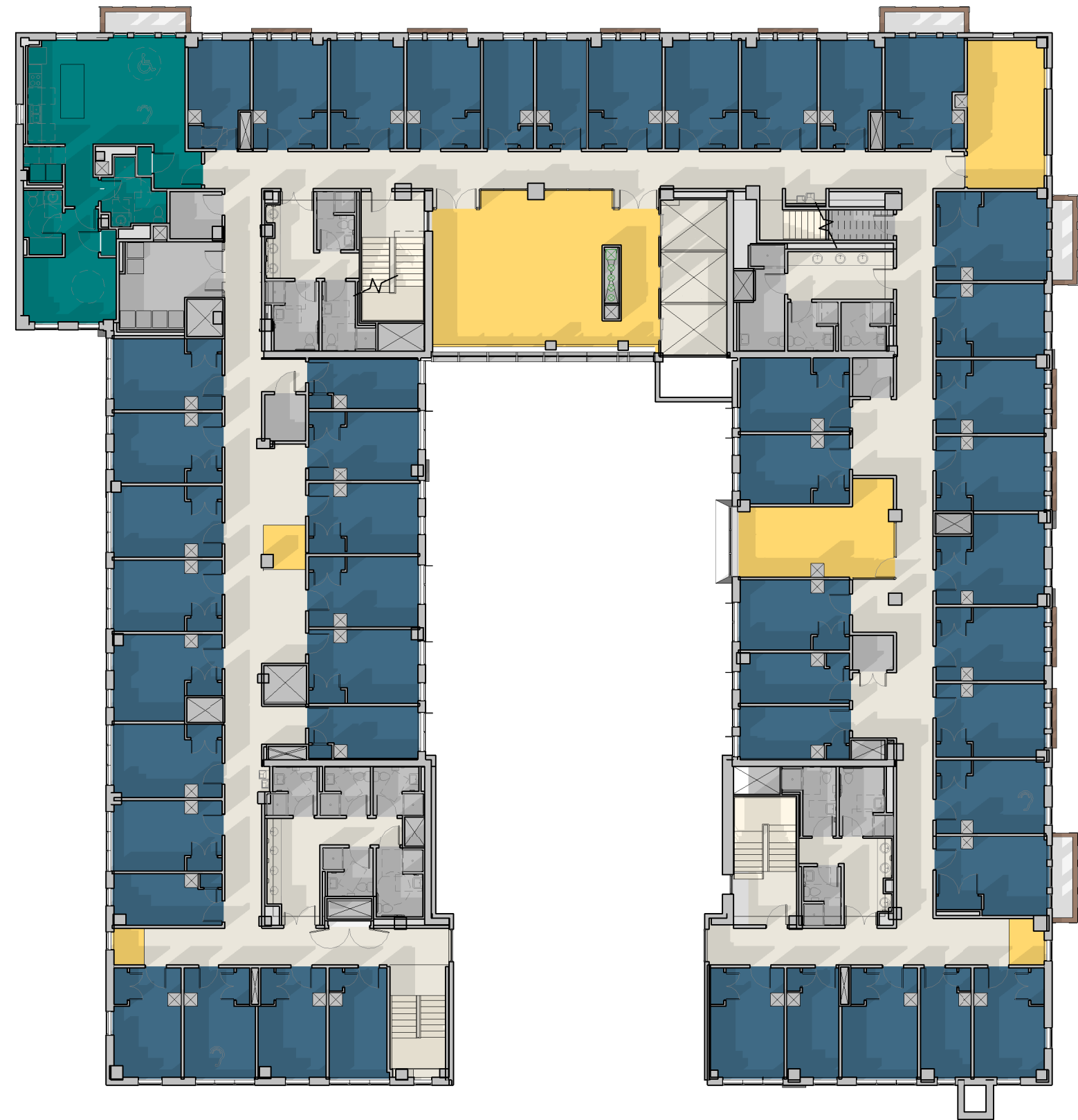
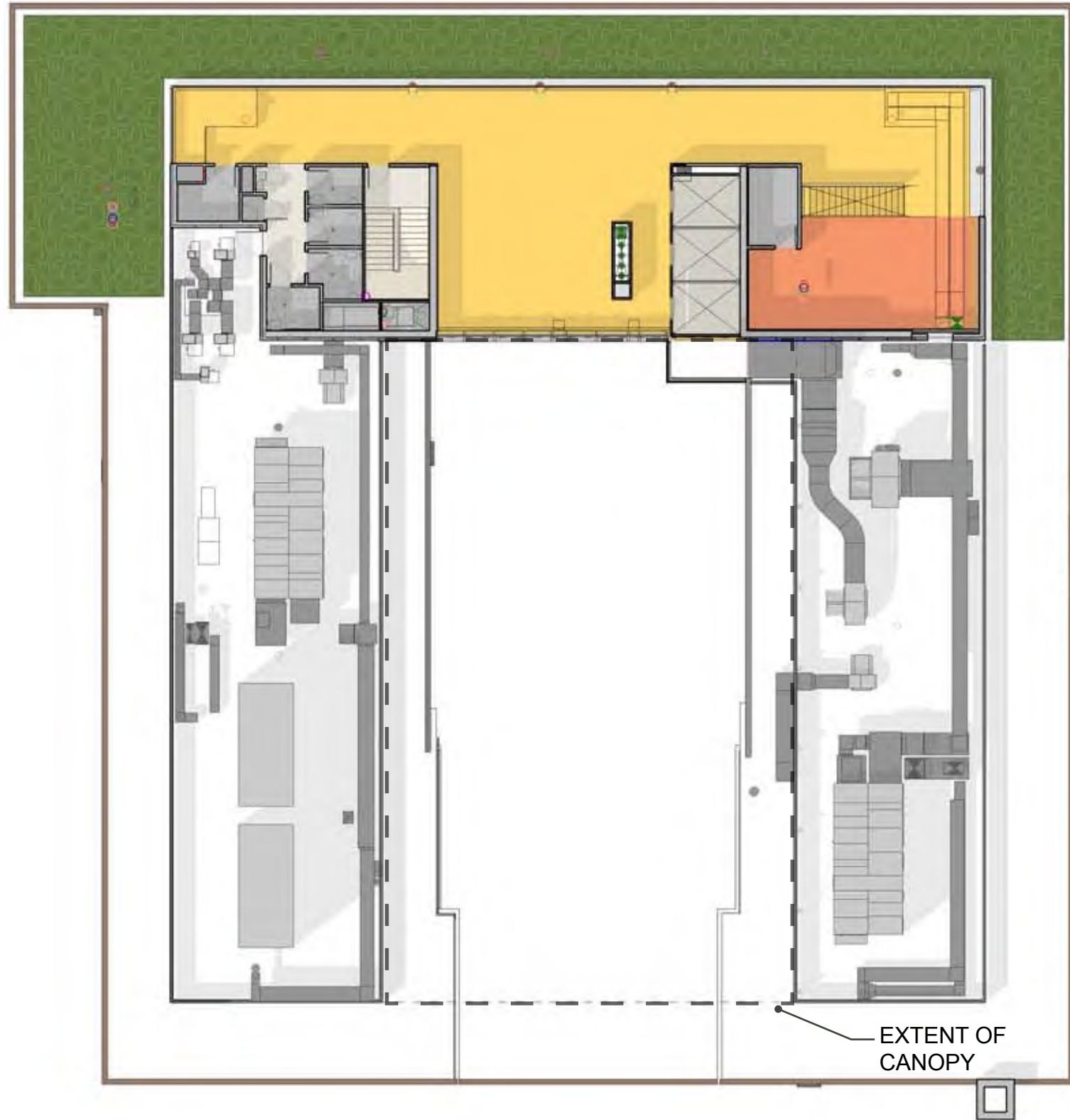


EIGHTH FLOOR

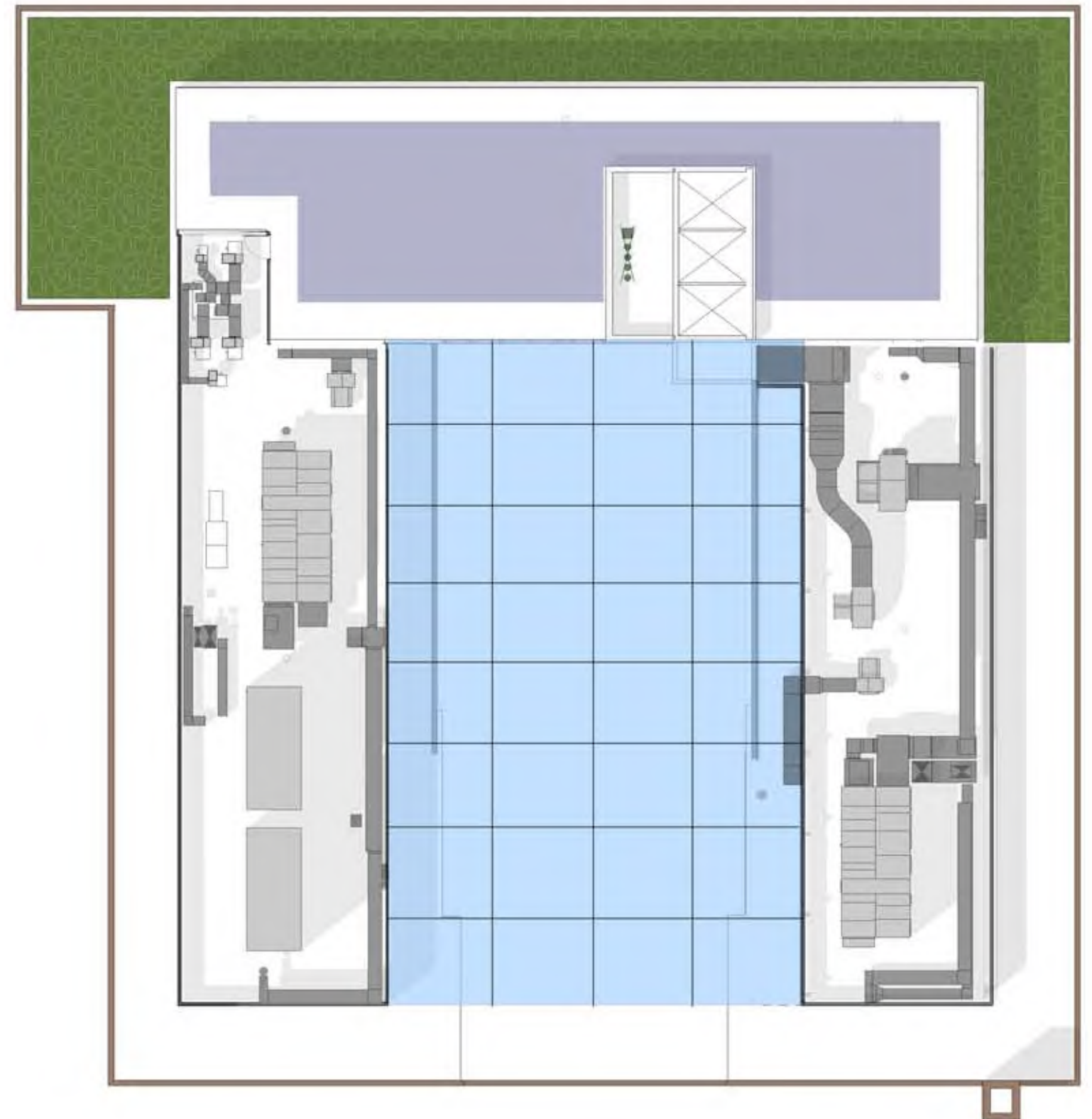


NINTH FLOOR



EXTENT OF
CANOPY

PENTHOUSE



ROOF / CANOPY





EXISTING



PROPOSED





EXISTING



PROPOSED



EXISTING



PROPOSED





EXISTING



PROPOSED





EXISTING



PROPOSED





EXISTING



PROPOSED



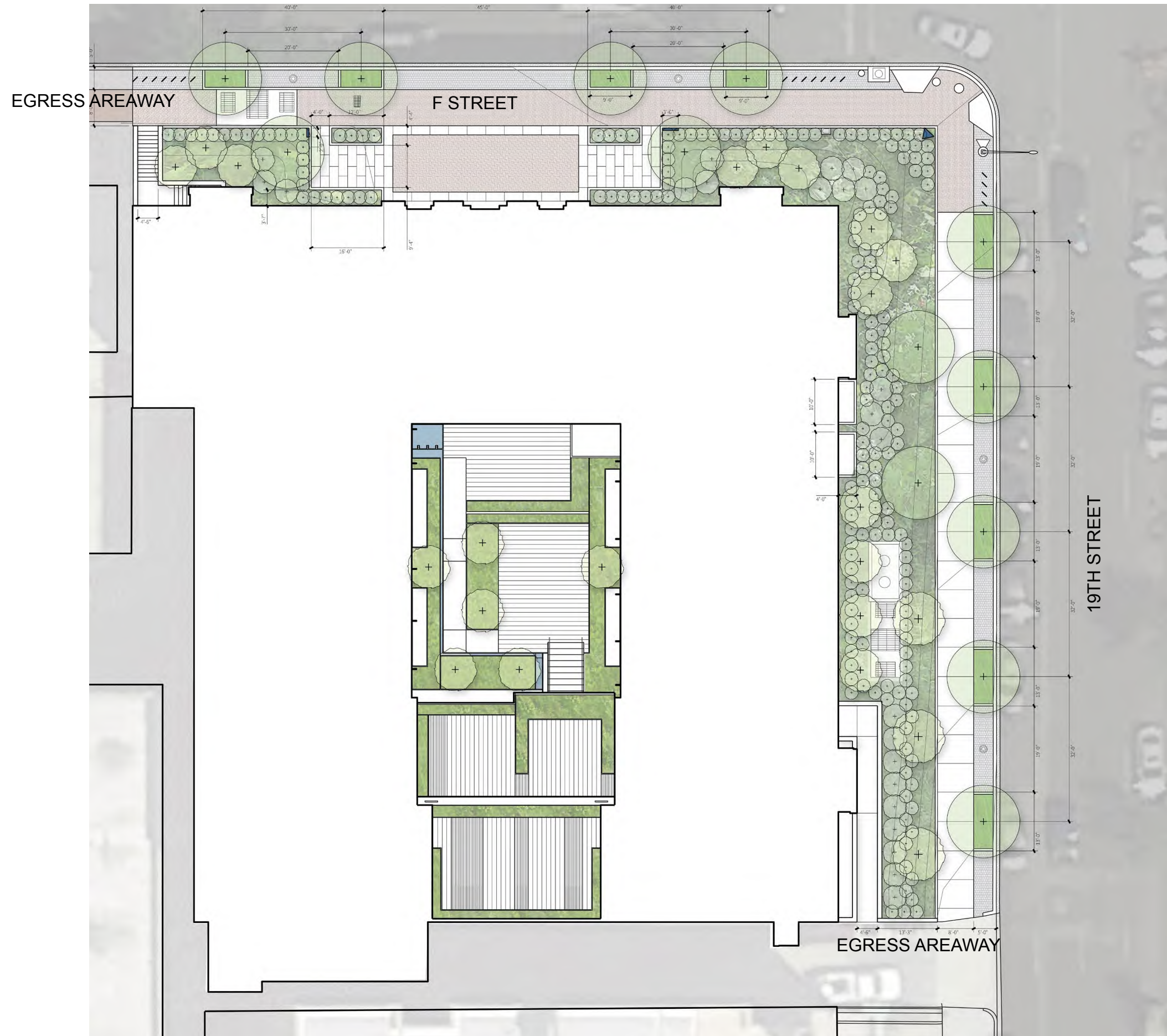


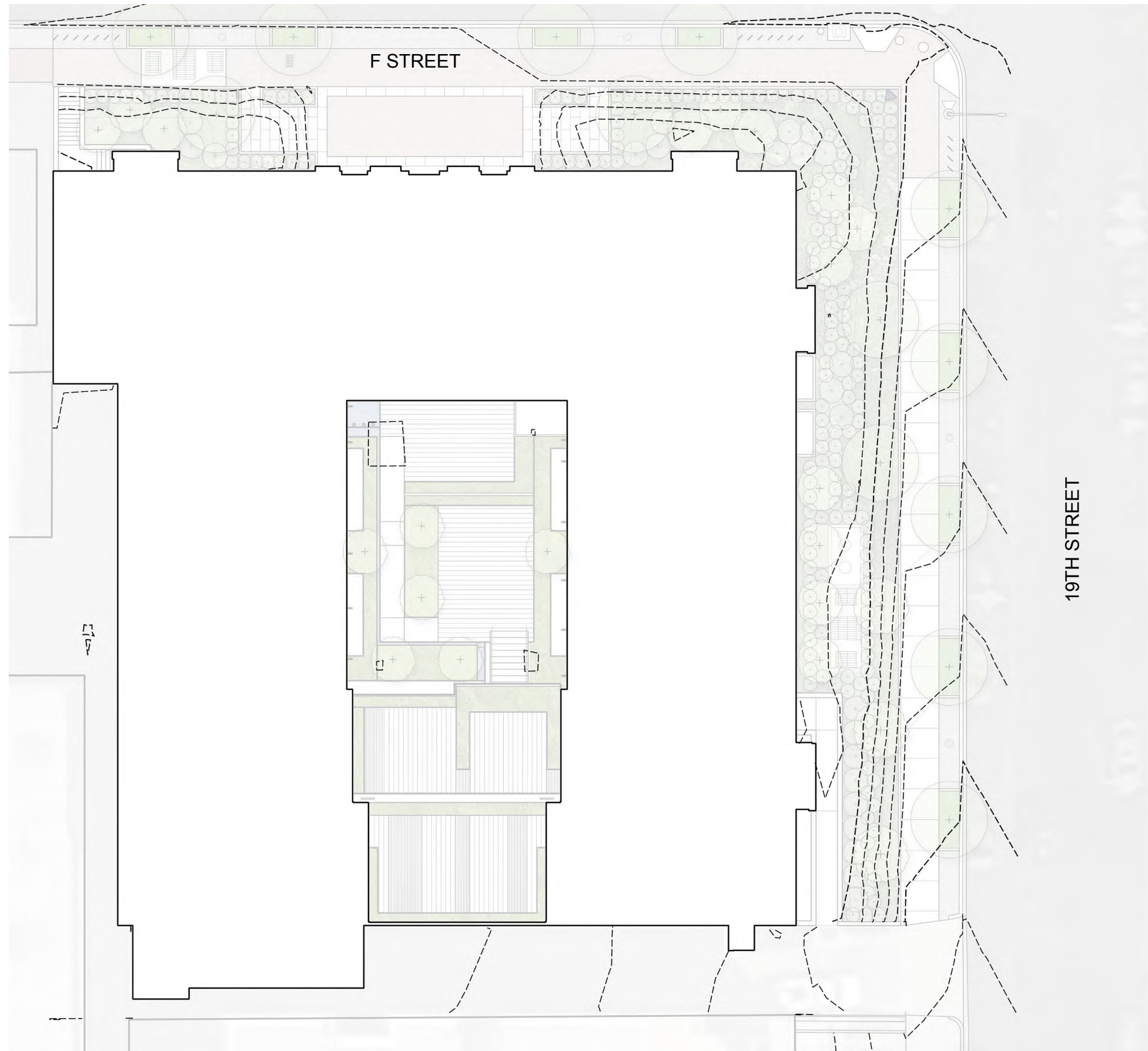
EXISTING

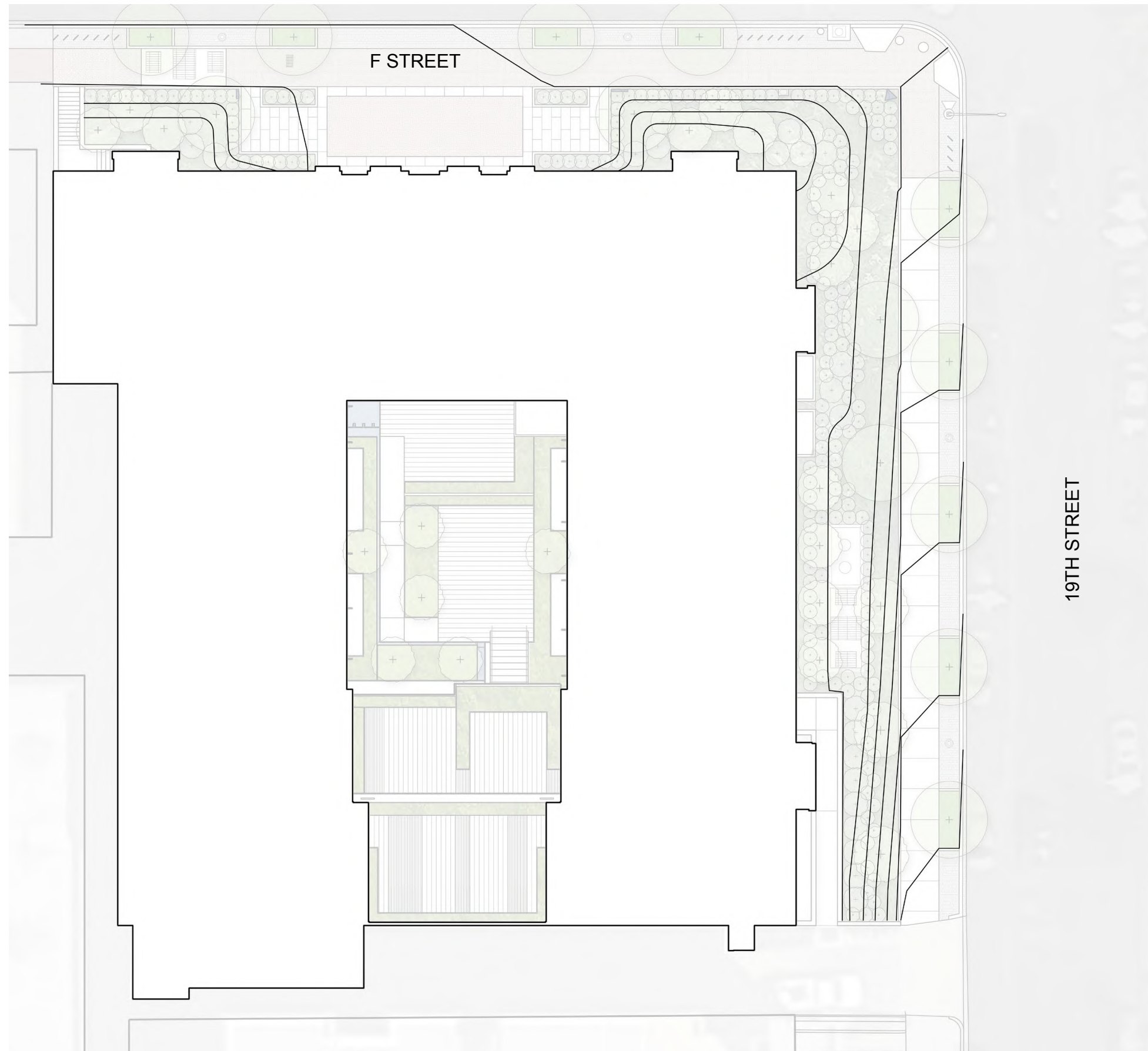


PROPOSED









F STREET

19TH STREET









LEED v4.0 BD+C: New Construction

Project Scorecard

GWU Thurston Hall Renovation

VMDO/GWU

10/29/2019



Project Information Form

Y	YY	YN	N
Y			

Integrative Process Possible Points: 1

Y	YY	YN	N
1			

Location and Transportation Possible Points: 16

Y	YY	YN	N
1			
1			1
5			
6			
2			

Sustainable Sites Possible Points: 10

Y	YY	YN	N
Y			
		2	
1			
4			
2			
1			

Water Efficiency Possible Points: 11

Y	YY	YN	N
Y			
Y			
Y			
2			
4		2	
1	1		
1			

Energy and Atmosphere Possible Points: 33

Y	YY	YN	N
Y			
Y			
Y			
Y			

Energy & Atmosphere, cont.

Y	YY	YN	N
	3	2	1
6	7		6
	1		
		2	
	1	2	
1			

Materials and Resources Possible Points: 13

Y	YY	YN	N
3	5	5	
Y			
Y			
	3	2	
1		1	
1		1	
1		1	
	2		

Indoor Environmental Quality Possible Points: 16

Y	YY	YN	N
Y			
Y			
2			
3			
1			
	1		1
1			
1	1		
	2	1	

Innovation Possible Points: 6

Y	YY	YN	N
5	1		
1			
1			
1			
	1		
1			

47 31 17 15 Total Possible Points: 110

Certified 40 to 49 points Silver 50 to 59 points Gold 60 to 79 points Platinum 80 to 110 points

(RP) - Regional Priority credit (adds 1 point)

Design Credits/Construction Credits

