

NOTES:

1. Lot 1 (South Building) shown for illustrative purposes only and is not part of this Second-Stage PUD. Refer to ZC Case No. 14-12 for approved south building information.
2. Unit layout and count, garage layout, penthouse interior layout, and rooftop mechanical equipment locations are conceptual and subject to change.
3. Spaces denoted as "Retail" may include uses in the retail, service, and eating and drinking use categories.
4. Refer to Ground Level Plan for circulation and loading information.
5. Refer to Detailed Elevations for building material identifications, material selections to be identified in subsequent submission.
5. In the event that a structure is built to the subject property within any portion of the dashed areas shown in elevation, the facade within such areas, including windows and masonry, may be deleted and replaced for the portions of such facade comprising the wall meeting such adjacent structure.

LEGEND:

- Retail Use
- Residential Use - Units
- Residential Use - Amenity
- Service, Parking, & Common Space
- Green Roof
- Potential PV Panel Location
- Screened Rooftop Mechanical
- Pool
- Roof Structure
- Court - Open
- Court - Closed
- Residential Pedestrian Entry
- Potential Retail Pedestrian Entry
- Parking & Loading Vehicular Entry



NOTES:

1. REFER TO ROOF PLAN FOR OVERALL BUILDING DIMENSIONS.

2. THE EXTERIOR ELEVATIONS, INCLUDING DOOR AND WINDOW SIZES, NUMBER, AND LOCATIONS, THE INTERIOR PARTITION LOCATIONS, THE NUMBER, SIZE, AND LOCATIONS OF THEATER BOXES, OUTDOOR SPACE, STAIRS, BALCONY, TERRACES, AND ELEVATORS ARE PRELIMINARY AND SHOWN FOR ILLUSTRATIVE PURPOSES ONLY. THE PARKING GARAGE LAYOUT IS SHOWN FOR ILLUSTRATIVE PURPOSES ONLY.

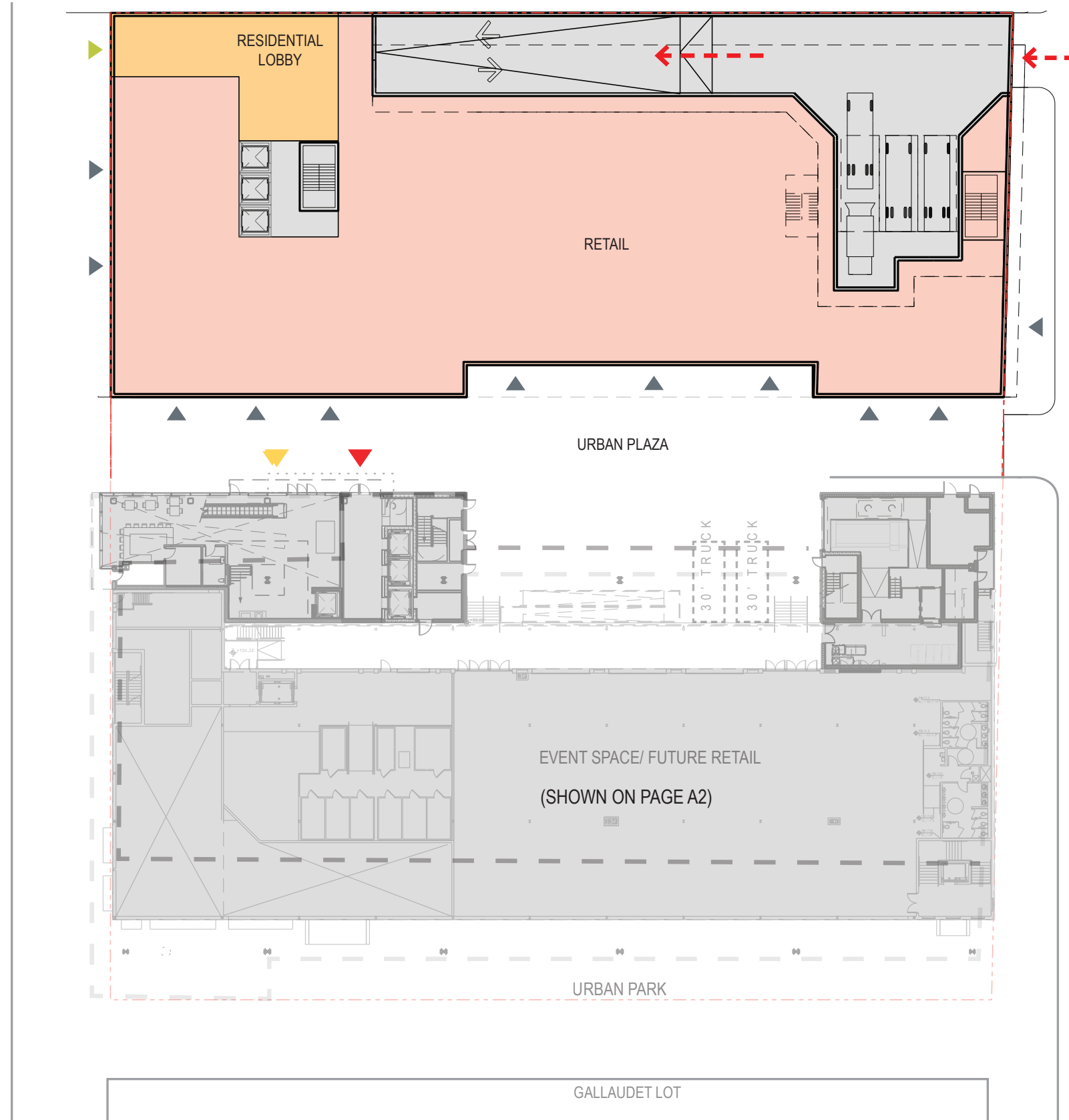
3. ALL SPOT ELEVATIONS ARE RELATIVE TO THE MEASURING POINT, ASSUMED FOR THESE DRAWINGS TO BE +0'-0".

4. ALL BALCONY LOCATIONS SHOWN ARE ILLUSTRATIVE; SIZE/ LOCATION ARE SUBJECT TO CHANGE.

LEGEND

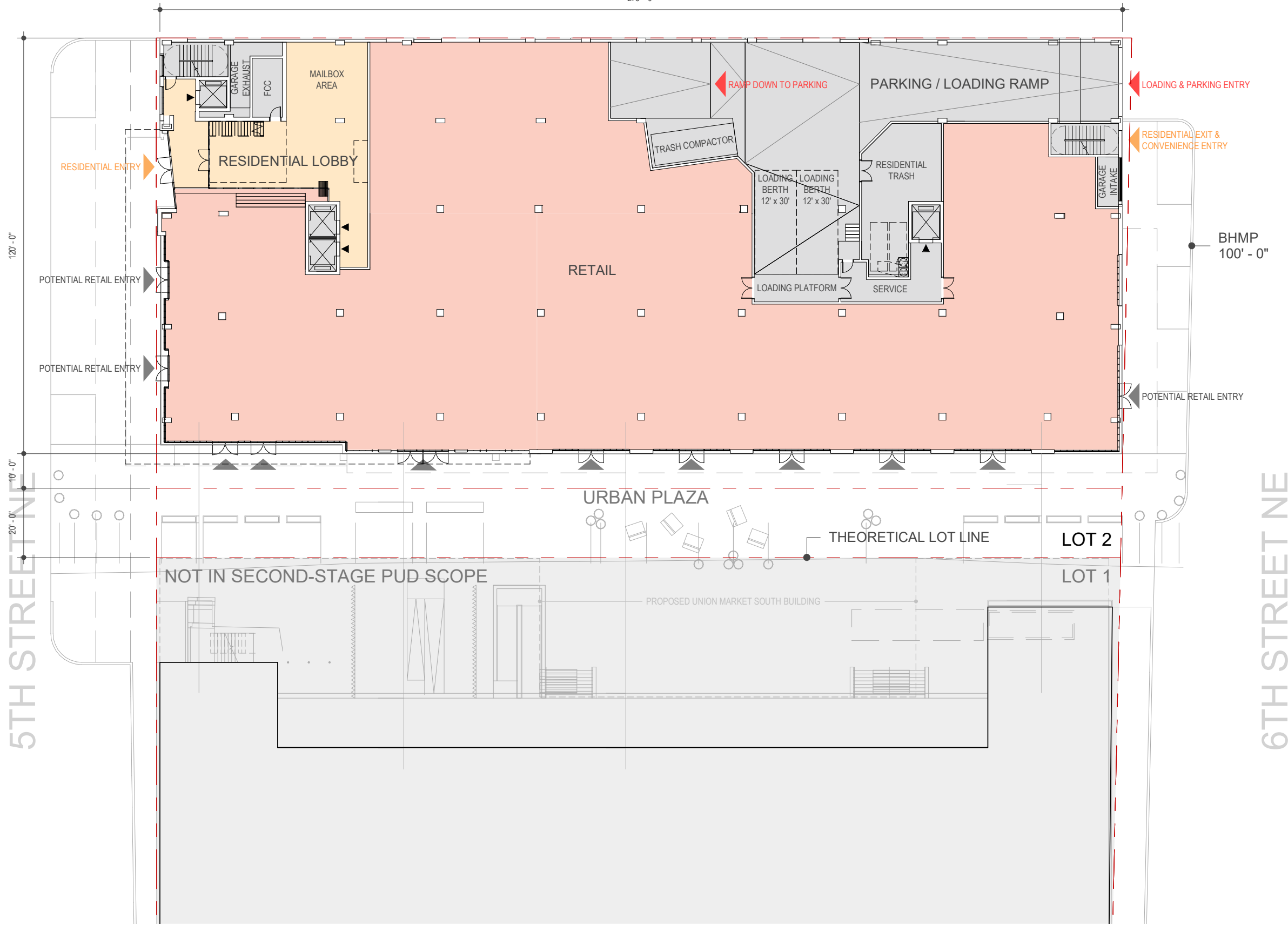
- PROPERTY LINE
- CORE/ SERVICE
- RETAIL
- EVENT
- THEATER
- OFFICE OR RESIDENTIAL
- PARKING
- TERRACE
- ROOF
- OFFICE
- RESIDENTIAL
- LINE OF THEATER ABOVE
- LINE OF OFFICE ABOVE

- ← DIRECTION OF TRAFFIC FLOW
- DIRECTION OF TRAFFIC FLOW
- VEHICULAR ENTRANCE/ EXIT
- ▶ PEDESTRIAN OFFICE OR RESIDENTIAL ENTRANCE/ EXIT
- ▶ PEDESTRIAN RETAIL ENTRANCE/ EXIT
- ▶ PEDESTRIAN THEATER ENTRANCE/ EXIT
- ▶ PEDESTRIAN RES ENTRANCE/ EXIT



NOTE:
SOUTH BUILDING FIRST FLOOR LAYOUT AND PORTIONS OF SECOND FLOOR LAYOUT DEPICTED ARE THE CURRENT LAYOUTS OF THE MARKET AT UNION MARKET AND ARE SUBJECT TO CHANGE OVER TIME, INCLUDING THE CREATION OF SEPARATE RETAIL USES WITH INDIVIDUAL ENTRANCES.

278' - 0"



NOTES:

1. Lot 1 (South Building) shown for illustrative purposes only and is not part of this Second-Stage PUD. Refer to ZC Case No. 14-12 for approved south building information.
2. Unit layout and count, garage layout, penthouse interior layout, and rooftop mechanical equipment locations are conceptual and subject to change.
3. Spaces denoted as "Retail" may include uses in the retail, service, and eating and drinking use categories.
4. Refer to Ground Level Plan for circulation and loading information.
5. Refer to Detailed Elevations for building material identifications, material selections to be identified in subsequent submission.
5. In the event that a structure is built to the subject property within any portion of the dashed areas shown in elevation, the facade within such areas, including windows and masonry, may be deleted and replaced for the portions of such facade comprising the wall meeting such adjacent structure.

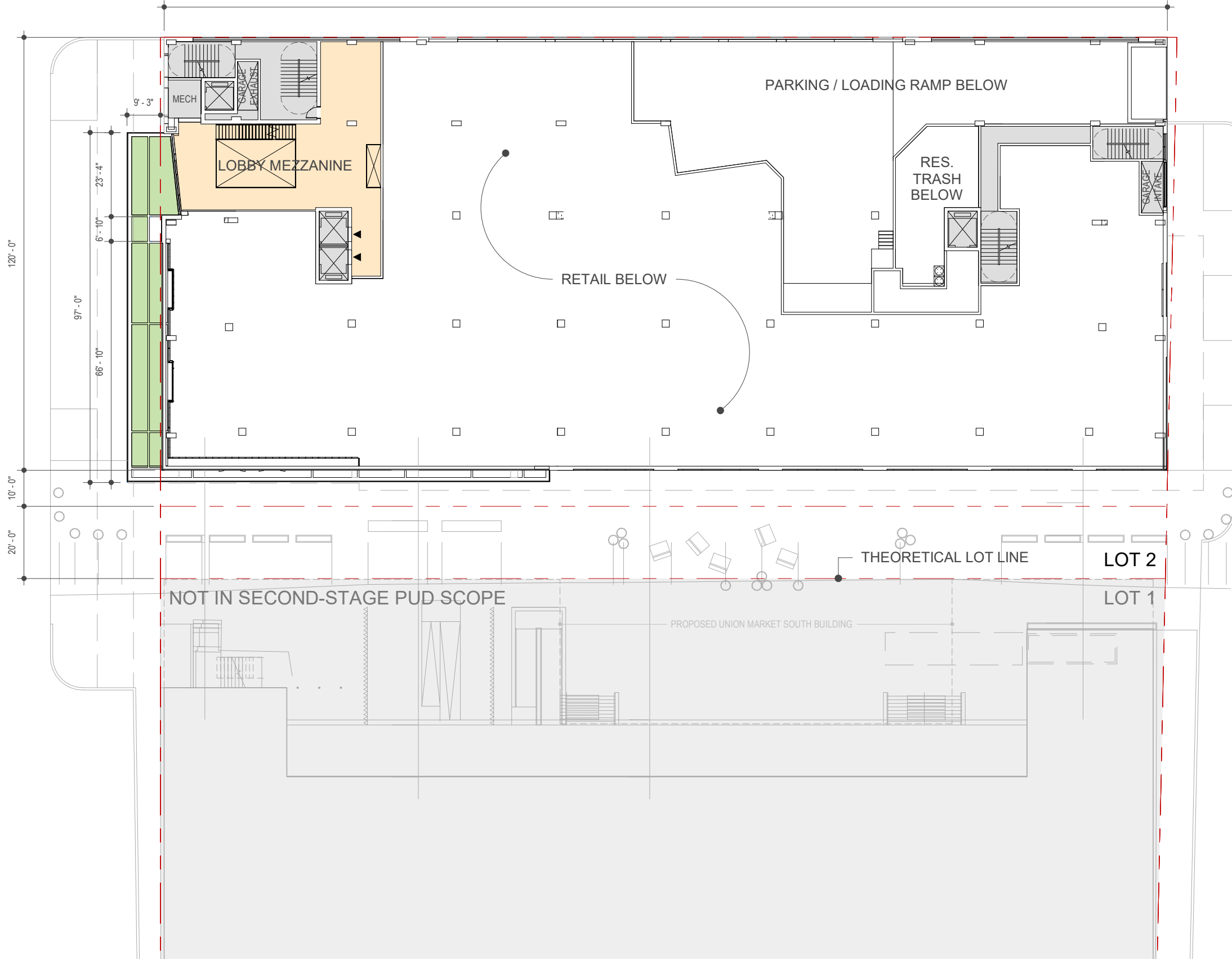
LEGEND:

- Retail Use
- Residential Use - Units
- Residential Use - Amenity
- Service, Parking, & Common Space
- Green Roof
- Potential PV Panel Location
- Screened Rooftop Mechanical
- Pool
- Roof Structure
- Court - Open
- Court - Closed
- Residential Pedestrian Entry
- Potential Retail Pedestrian Entry
- Parking & Loading Vehicular Entry



PAGE INTENTIONALLY BLANK

278'-0"



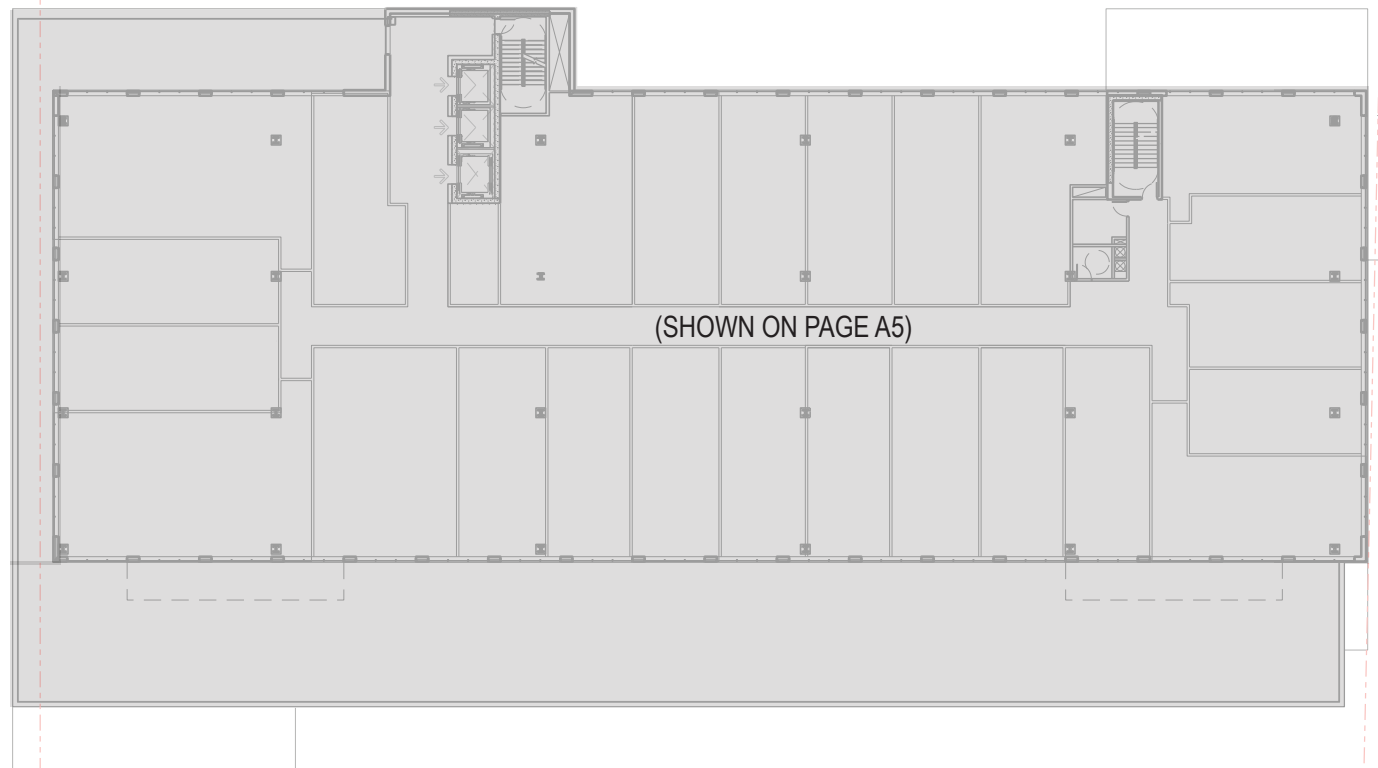
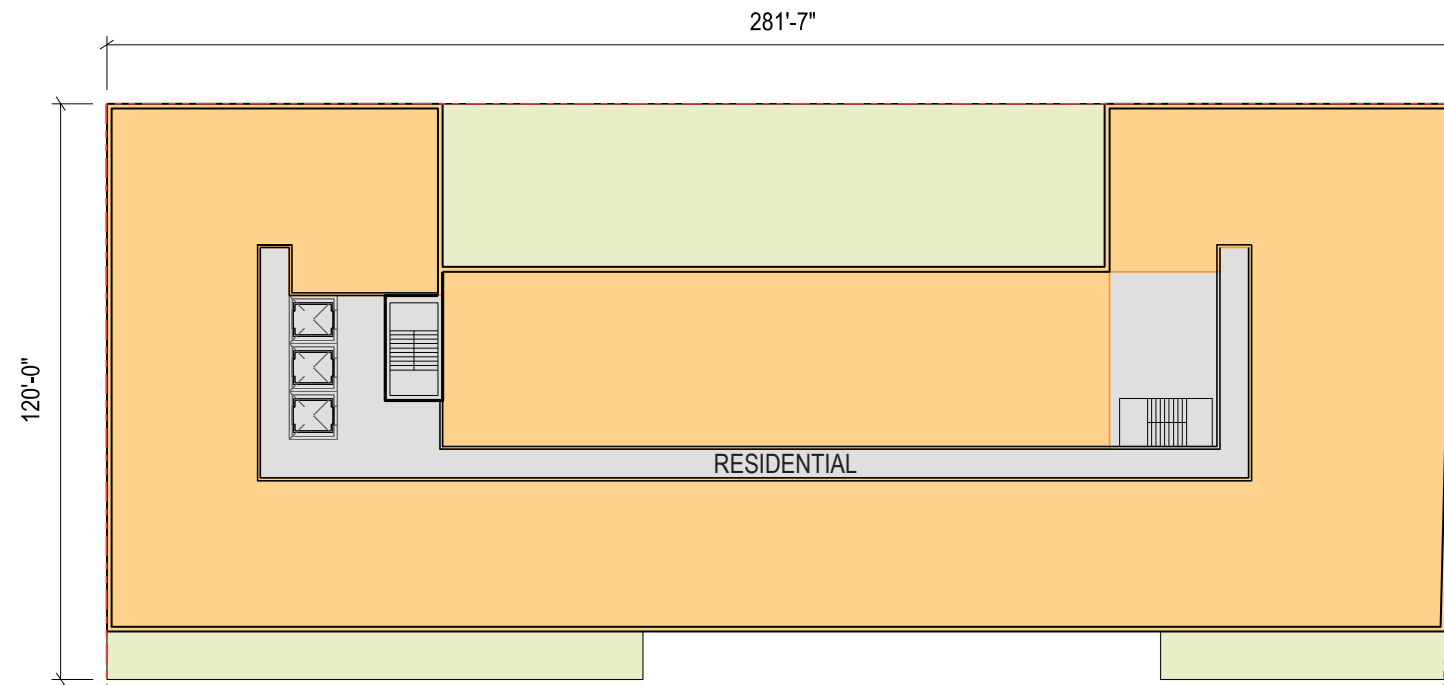
NOTES:

1. Lot 1 (South Building) shown for illustrative purposes only and is not part of this Second-Stage PUD. Refer to ZC Case No. 14-12 for approved south building information.
2. Unit layout and count, garage layout, penthouse interior layout, and rooftop mechanical equipment locations are conceptual and subject to change.
3. Spaces denoted as "Retail" may include uses in the retail, service, and eating and drinking use categories.
4. Refer to Ground Level Plan for circulation and loading information.
5. Refer to Detailed Elevations for building material identifications, material selections to be identified in subsequent submission.
5. In the event that a structure is built to the subject property within any portion of the dashed areas shown in elevation, the facade within such areas, including windows and masonry, may be deleted and replaced for the portions of such facade comprising the wall meeting such adjacent structure.

LEGEND:

- Retail Use
- Residential Use - Units
- Residential Use - Amenity
- Service, Parking, & Common Space
- Green Roof
- Potential PV Panel Location
- Screened Rooftop Mechanical
- Pool
- Roof Structure
- Court - Open
- Court - Closed
- Residential Pedestrian Entry
- Potential Retail Pedestrian Entry
- Parking & Loading Vehicular Entry





NOTES:

1. REFER TO ROOF PLAN FOR OVERALL BUILDING DIMENSIONS.

2. THE EXTERIOR ELEVATIONS, INCLUDING DOOR AND WINDOW SIZES, NUMBER, AND LOCATIONS, THE INTERIOR PARTITION LOCATIONS, THE NUMBER, SIZE, AND LOCATIONS OF THEATER BOXES, OUTDOOR SPACE, STAIRS, BALCONY, TERRACES, AND ELEVATORS ARE PRELIMINARY AND SHOWN FOR ILLUSTRATIVE PURPOSES ONLY. THE PARKING GARAGE LAYOUT IS SHOWN FOR ILLUSTRATIVE PURPOSES ONLY.

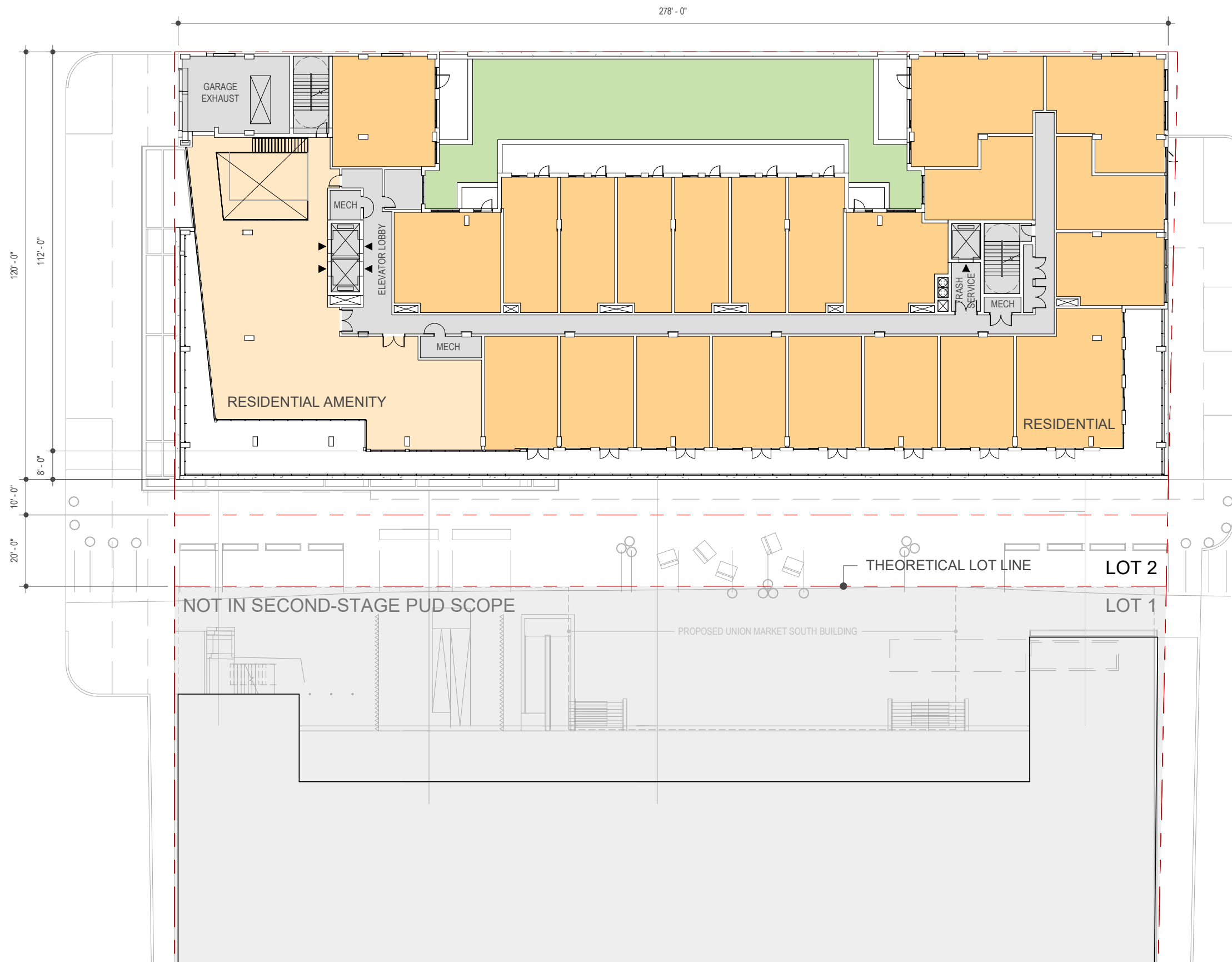
3. ALL SPOT ELEVATIONS ARE RELATIVE TO THE MEASURING POINT, ASSUMED FOR THESE DRAWINGS TO BE +0'-0".

4. ALL BALCONY LOCATIONS SHOWN ARE ILLUSTRATIVE; SIZE/ LOCATION ARE SUBJECT TO CHANGE.

LEGEND

- PROPERTY LINE
- CORE/ SERVICE
- RETAIL
- EVENT
- THEATER
- OFFICE OR RESIDENTIAL
- PARKING
- TERRACE
- ROOF
- OFFICE
- RESIDENTIAL

NOTE:
SOUTH BUILDING FIRST FLOOR LAYOUT AND PORTIONS OF SECOND FLOOR LAYOUT DEPICTED ARE THE CURRENT LAYOUTS OF THE MARKET AT UNION MARKET AND ARE SUBJECT TO CHANGE OVER TIME, INCLUDING THE CREATION OF SEPARATE RETAIL USES WITH INDIVIDUAL ENTRANCES.



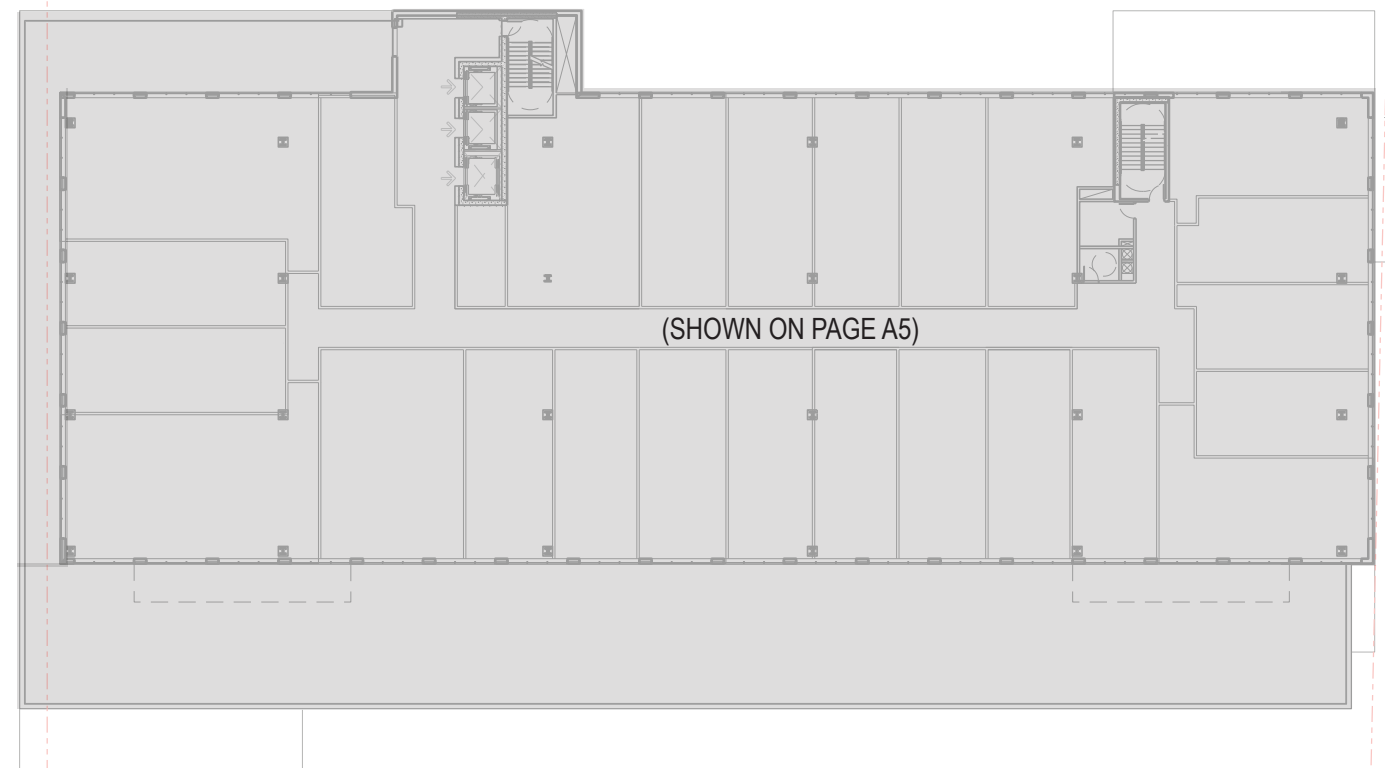
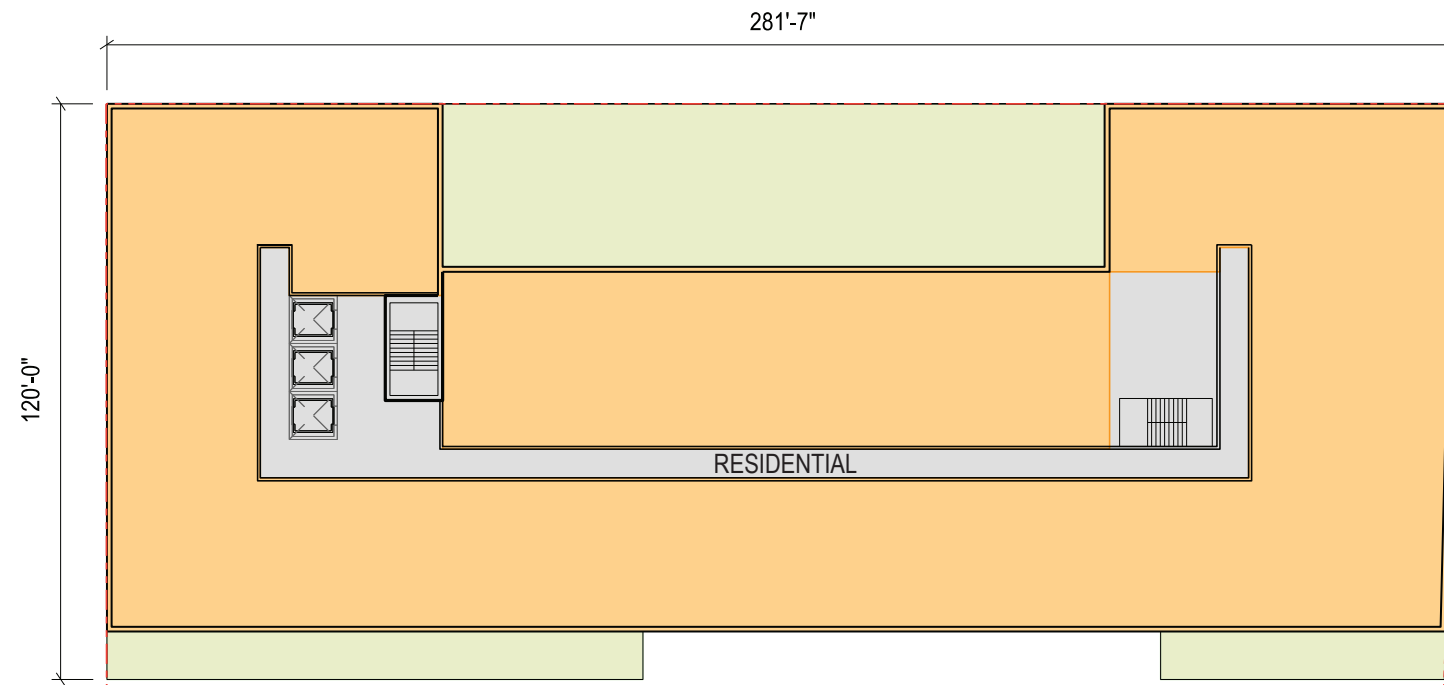
NOTES:

1. Lot 1 (South Building) shown for illustrative purposes only and is not part of this Second-Stage PUD. Refer to ZC Case No. 14-12 for approved south building information.
2. Unit layout and count, garage layout, penthouse interior layout, and rooftop mechanical equipment locations are conceptual and subject to change.
3. Spaces denoted as "Retail" may include uses in the retail, service, and eating and drinking use categories.
4. Refer to Ground Level Plan for circulation and loading information.
5. Refer to Detailed Elevations for building material identifications, material selections to be identified in subsequent submission.
5. In the event that a structure is built to the subject property within any portion of the dashed areas shown in elevation, the facade within such areas, including windows and masonry, may be deleted and replaced for the portions of such facade comprising the wall meeting such adjacent structure.

LEGEND:

- Retail Use
- Residential Use - Units
- Residential Use - Amenity
- Service, Parking, & Common Space
- Green Roof
- Potential PV Panel Location
- Screened Rooftop Mechanical
- Pool
- Roof Structure
- Court - Open
- Court - Closed
- Residential Pedestrian Entry
- Potential Retail Pedestrian Entry
- Parking & Loading Vehicular Entry





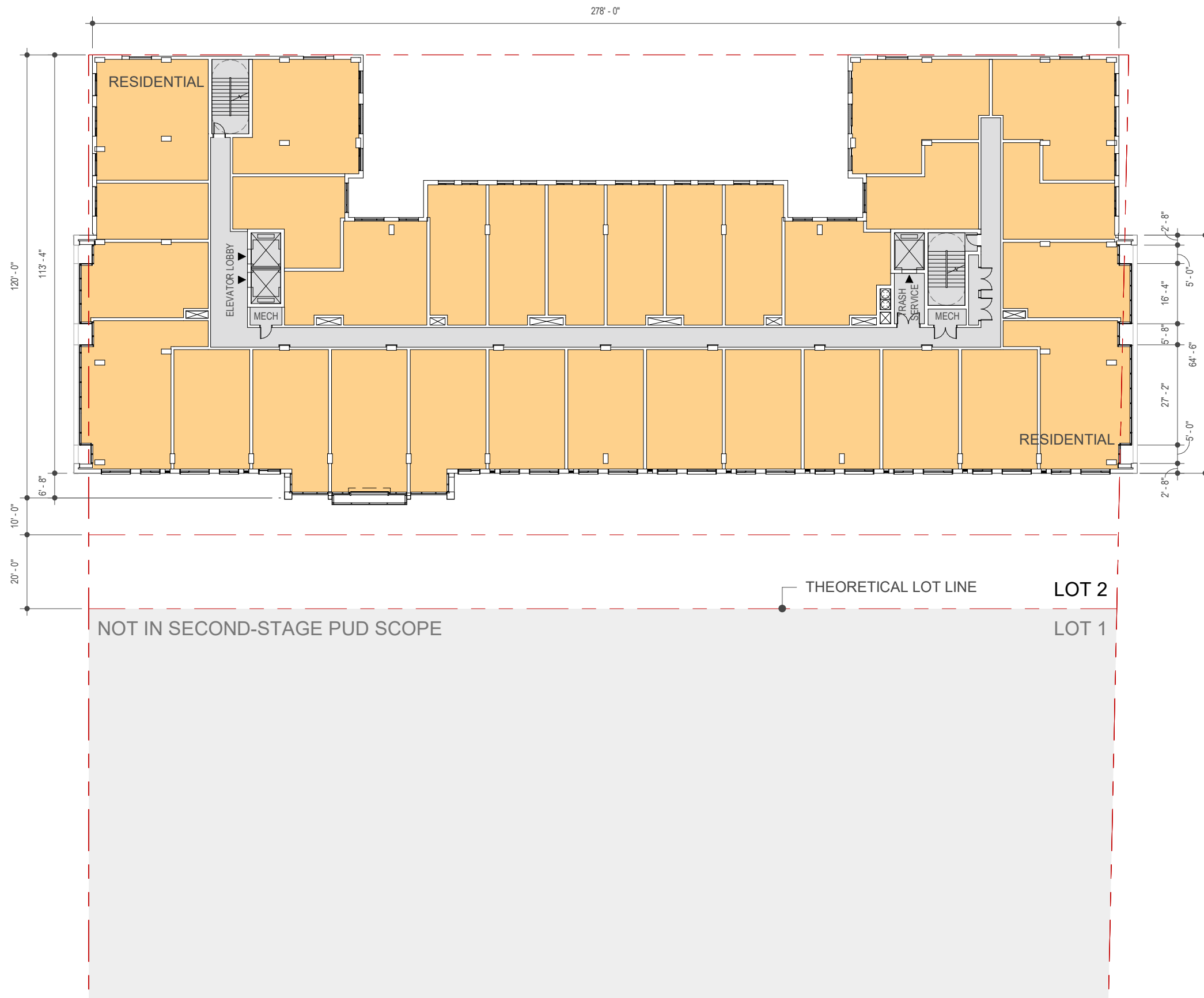
NOTES:

1. REFER TO ROOF PLAN FOR OVERALL BUILDING DIMENSIONS.
2. THE EXTERIOR ELEVATIONS, INCLUDING DOOR AND WINDOW SIZES, NUMBER, AND LOCATIONS, THE INTERIOR PARTITION LOCATIONS, THE NUMBER, SIZE, AND LOCATIONS OF THEATER BOXES, OUTDOOR SPACE, STAIRS, BALCONY, TERRACES, AND ELEVATORS ARE PRELIMINARY AND SHOWN FOR ILLUSTRATIVE PURPOSES ONLY. THE PARKING GARAGE LAYOUT IS SHOWN FOR ILLUSTRATIVE PURPOSES ONLY.
3. ALL SPOT ELEVATIONS ARE RELATIVE TO THE MEASURING POINT, ASSUMED FOR THESE DRAWINGS TO BE +0'-0".
4. ALL BALCONY LOCATIONS SHOWN ARE ILLUSTRATIVE; SIZE/ LOCATION ARE SUBJECT TO CHANGE.

LEGEND

- PROPERTY LINE
- CORE/ SERVICE
- RETAIL
- EVENT
- THEATER
- OFFICE OR RESIDENTIAL
- PARKING
- TERRACE
- ROOF
- OFFICE
- RESIDENTIAL

NOTE:
SOUTH BUILDING FIRST FLOOR LAYOUT AND PORTIONS OF SECOND FLOOR LAYOUT DEPICTED ARE THE CURRENT LAYOUTS OF THE MARKET AT UNION MARKET AND ARE SUBJECT TO CHANGE OVER TIME, INCLUDING THE CREATION OF SEPARATE RETAIL USES WITH INDIVIDUAL ENTRANCES.



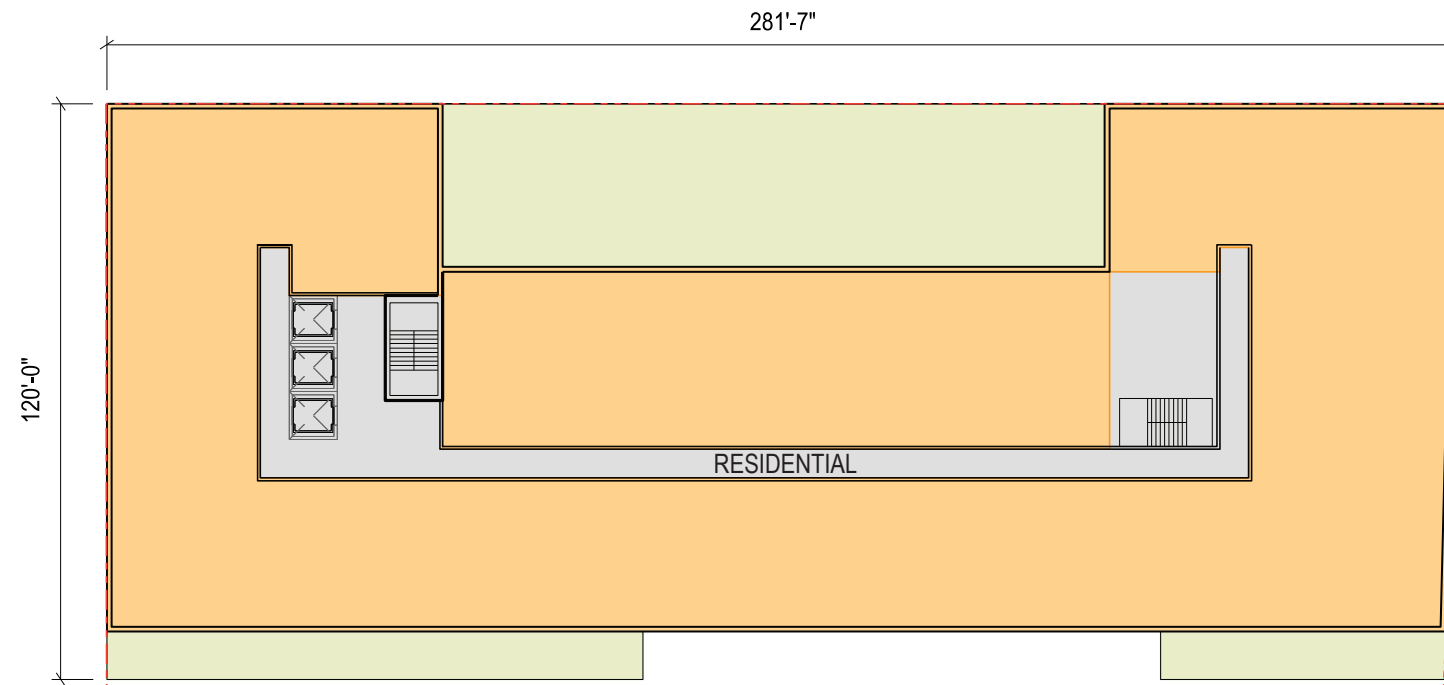
NOTES:

1. Lot 1 (South Building) shown for illustrative purposes only and is not part of this Second-Stage PUD. Refer to ZC Case No. 14-12 for approved south building information.
2. Unit layout and count, garage layout, penthouse interior layout, and rooftop mechanical equipment locations are conceptual and subject to change.
3. Spaces denoted as "Retail" may include uses in the retail, service, and eating and drinking use categories.
4. Refer to Ground Level Plan for circulation and loading information.
5. Refer to Detailed Elevations for building material identifications, material selections to be identified in subsequent submission.
5. In the event that a structure is built to the subject property within any portion of the dashed areas shown in elevation, the facade within such areas, including windows and masonry, may be deleted and replaced for the portions of such facade comprising the wall meeting such adjacent structure.

LEGEND:

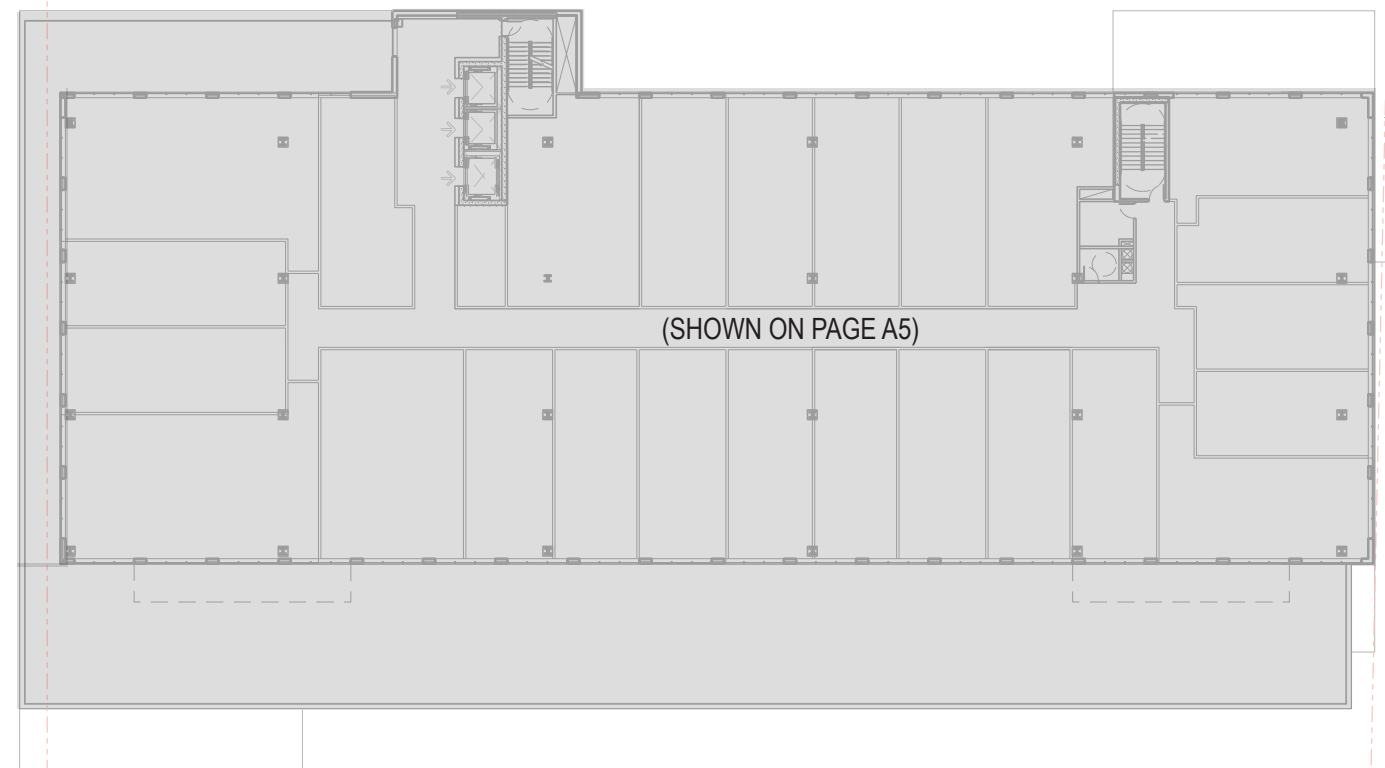
- Retail Use
- Residential Use - Units
- Residential Use - Amenity
- Service, Parking, & Common Space
- Green Roof
- Potential PV Panel Location
- Screened Rooftop Mechanical
- Pool
- Roof Structure
- Court - Open
- Court - Closed
- Residential Pedestrian Entry
- Potential Retail Pedestrian Entry
- Parking & Loading Vehicular Entry





NOTES:

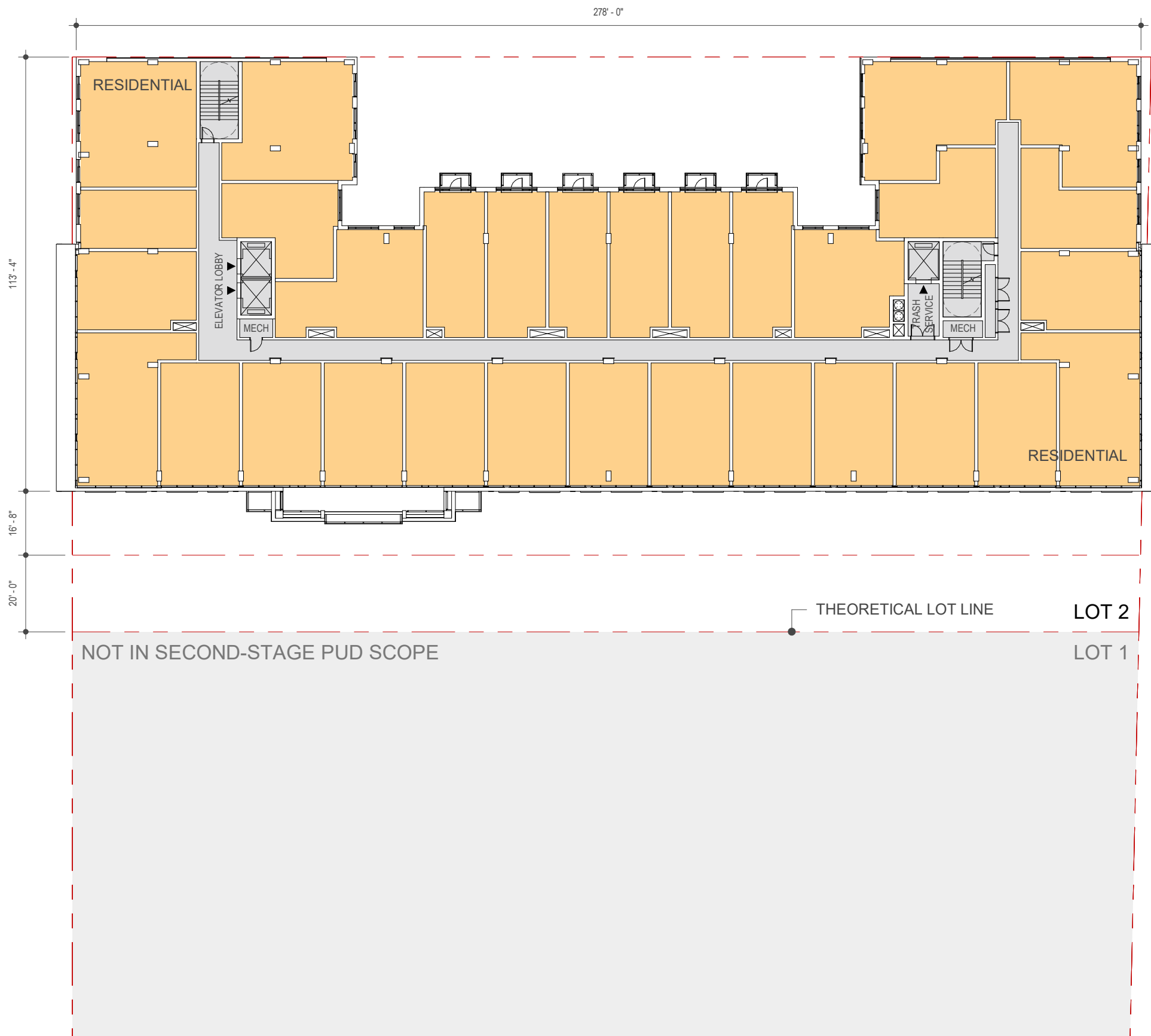
1. REFER TO ROOF PLAN FOR OVERALL BUILDING DIMENSIONS.
2. THE EXTERIOR ELEVATIONS, INCLUDING DOOR AND WINDOW SIZES, NUMBER, AND LOCATIONS, THE INTERIOR PARTITION LOCATIONS, THE NUMBER, SIZE, AND LOCATIONS OF THEATER BOXES, OUTDOOR SPACE, STAIRS, BALCONY, TERRACES, AND ELEVATORS ARE PRELIMINARY AND SHOWN FOR ILLUSTRATIVE PURPOSES ONLY. THE PARKING GARAGE LAYOUT IS SHOWN FOR ILLUSTRATIVE PURPOSES ONLY.
3. ALL SPOT ELEVATIONS ARE RELATIVE TO THE MEASURING POINT, ASSUMED FOR THESE DRAWINGS TO BE +0'-0".
4. ALL BALCONY LOCATIONS SHOWN ARE ILLUSTRATIVE; SIZE/ LOCATION ARE SUBJECT TO CHANGE.



LEGEND

- PROPERTY LINE
- CORE/ SERVICE
- RETAIL
- EVENT
- THEATER
- OFFICE OR RESIDENTIAL
- PARKING
- TERRACE
- ROOF
- OFFICE
- RESIDENTIAL

NOTE:
SOUTH BUILDING FIRST FLOOR LAYOUT AND PORTIONS OF SECOND FLOOR LAYOUT DEPICTED ARE THE CURRENT LAYOUTS OF THE MARKET AT UNION MARKET AND ARE SUBJECT TO CHANGE OVER TIME, INCLUDING THE CREATION OF SEPARATE RETAIL USES WITH INDIVIDUAL ENTRANCES.



NOTES:

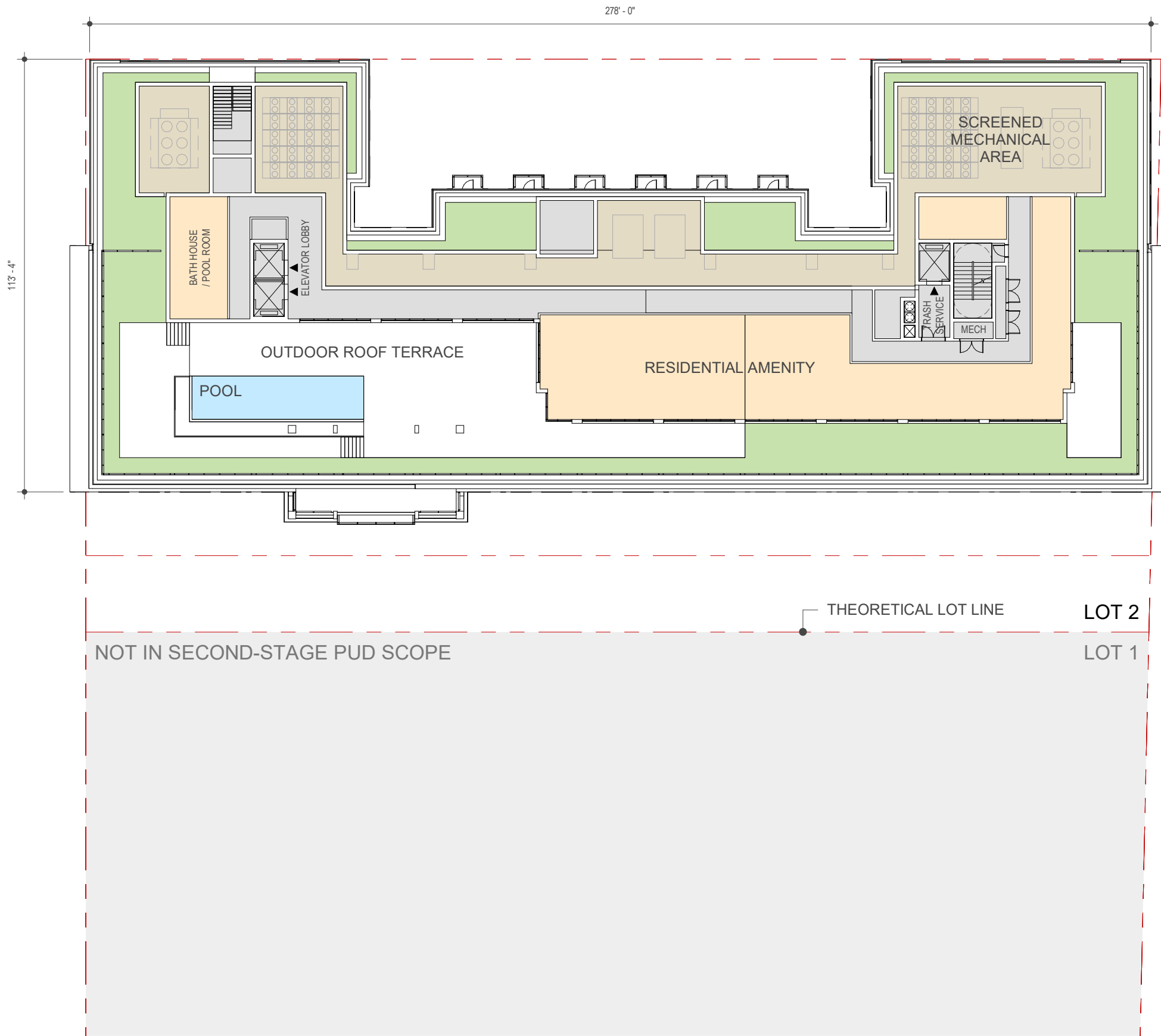
1. Lot 1 (South Building) shown for illustrative purposes only and is not part of this Second-Stage PUD. Refer to ZC Case No. 14-12 for approved south building information.
2. Unit layout and count, garage layout, penthouse interior layout, and rooftop mechanical equipment locations are conceptual and subject to change.
3. Spaces denoted as "Retail" may include uses in the retail, service, and eating and drinking use categories.
4. Refer to Ground Level Plan for circulation and loading information.
5. Refer to Detailed Elevations for building material identifications, material selections to be identified in subsequent submission.
5. In the event that a structure is built to the subject property within any portion of the dashed areas shown in elevation, the facade within such areas, including windows and masonry, may be deleted and replaced for the portions of such facade comprising the wall meeting such adjacent structure.

LEGEND:

- Retail Use
- Residential Use - Units
- Residential Use - Amenity
- Service, Parking, & Common Space
- Green Roof
- Potential PV Panel Location
- Screened Rooftop Mechanical
- Pool
- Roof Structure
- Court - Open
- Court - Closed
- Residential Pedestrian Entry
- Potential Retail Pedestrian Entry
- Parking & Loading Vehicular Entry



PAGE INTENTIONALLY BLANK



NOTES:

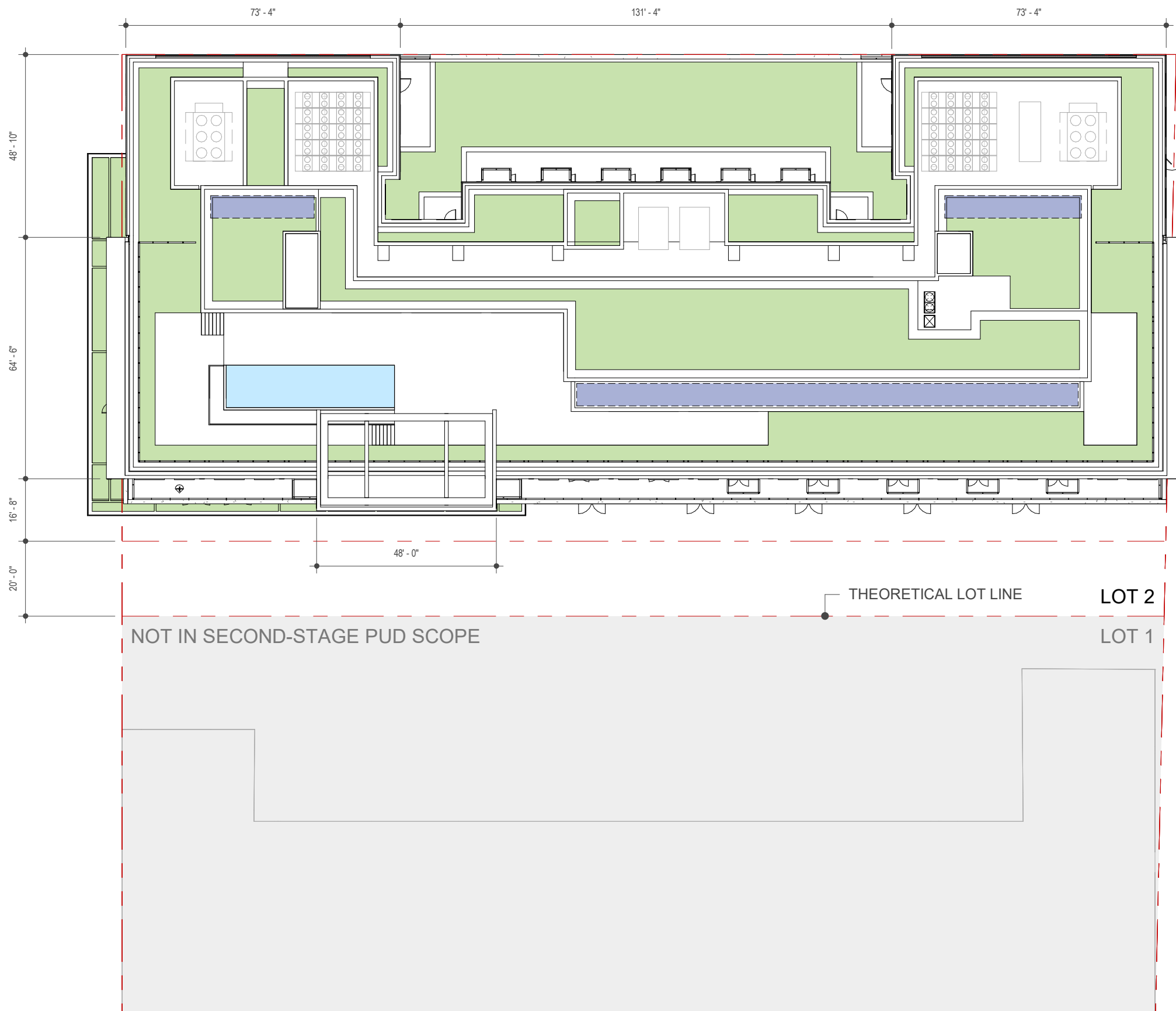
1. Lot 1 (South Building) shown for illustrative purposes only and is not part of this Second-Stage PUD. Refer to ZC Case No. 14-12 for approved south building information.
2. Unit layout and count, garage layout, penthouse interior layout, and rooftop mechanical equipment locations are conceptual and subject to change.
3. Spaces denoted as "Retail" may include uses in the retail, service, and eating and drinking use categories.
4. Refer to Ground Level Plan for circulation and loading information.
5. Refer to Detailed Elevations for building material identifications, material selections to be identified in subsequent submission.
5. In the event that a structure is built to the subject property within any portion of the dashed areas shown in elevation, the facade within such areas, including windows and masonry, may be deleted and replaced for the portions of such facade comprising the wall meeting such adjacent structure.

LEGEND:

- Retail Use
- Residential Use - Units
- Residential Use - Amenity
- Service, Parking, & Common Space
- Green Roof
- Potential PV Panel Location
- Screened Rooftop Mechanical
- Pool
- Roof Structure
- Court - Open
- Court - Closed
- Residential Pedestrian Entry
- Potential Retail Pedestrian Entry
- Parking & Loading Vehicular Entry



PAGE INTENTIONALLY BLANK



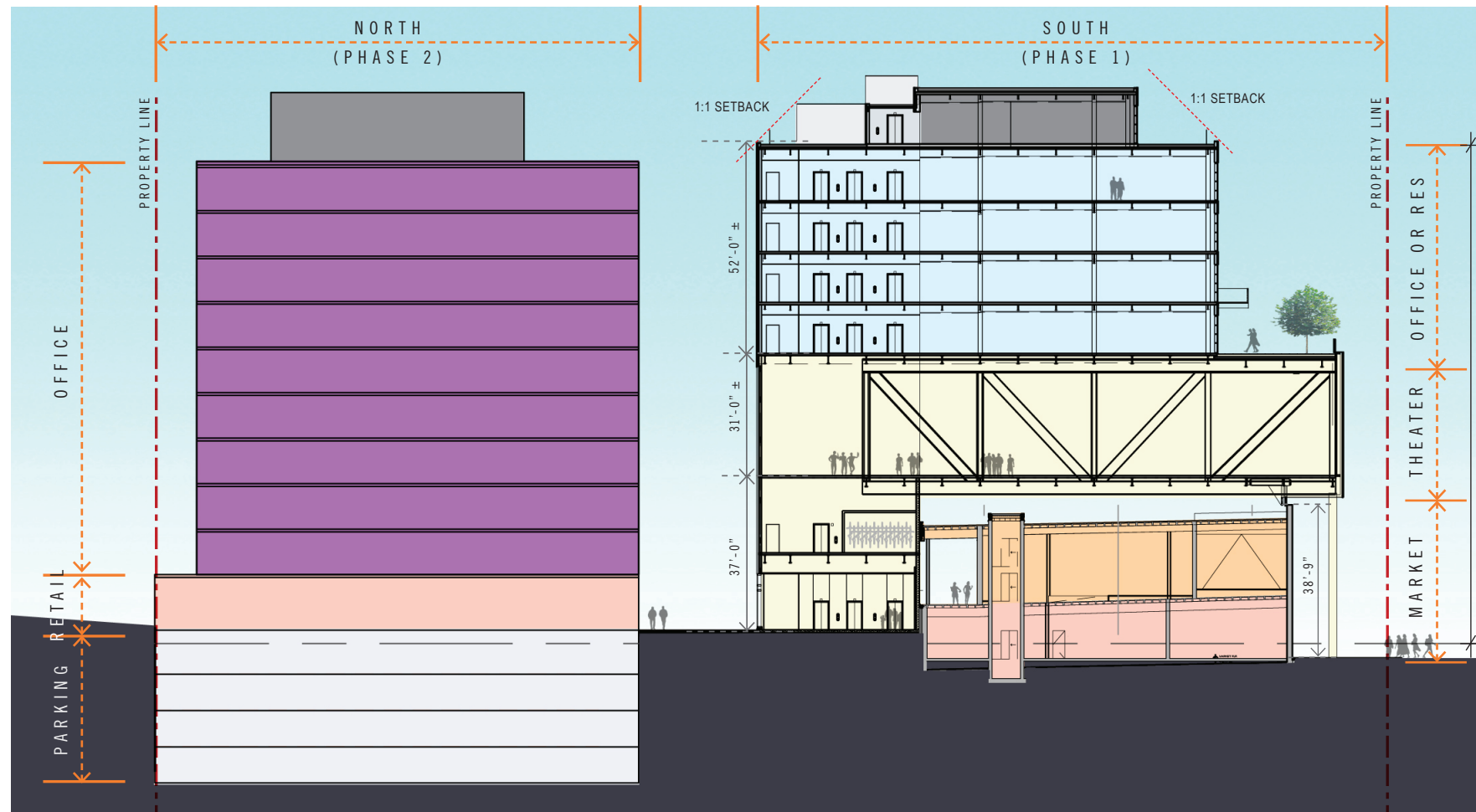
NOTES:

1. Lot 1 (South Building) shown for illustrative purposes only and is not part of this Second-Stage PUD. Refer to ZC Case No. 14-12 for approved south building information.
2. Unit layout and count, garage layout, penthouse interior layout, and rooftop mechanical equipment locations are conceptual and subject to change.
3. Spaces denoted as "Retail" may include uses in the retail, service, and eating and drinking use categories.
4. Refer to Ground Level Plan for circulation and loading information.
5. Refer to Detailed Elevations for building material identifications, material selections to be identified in subsequent submission.
5. In the event that a structure is built to the subject property within any portion of the dashed areas shown in elevation, the facade within such areas, including windows and masonry, may be deleted and replaced for the portions of such facade comprising the wall meeting such adjacent structure.

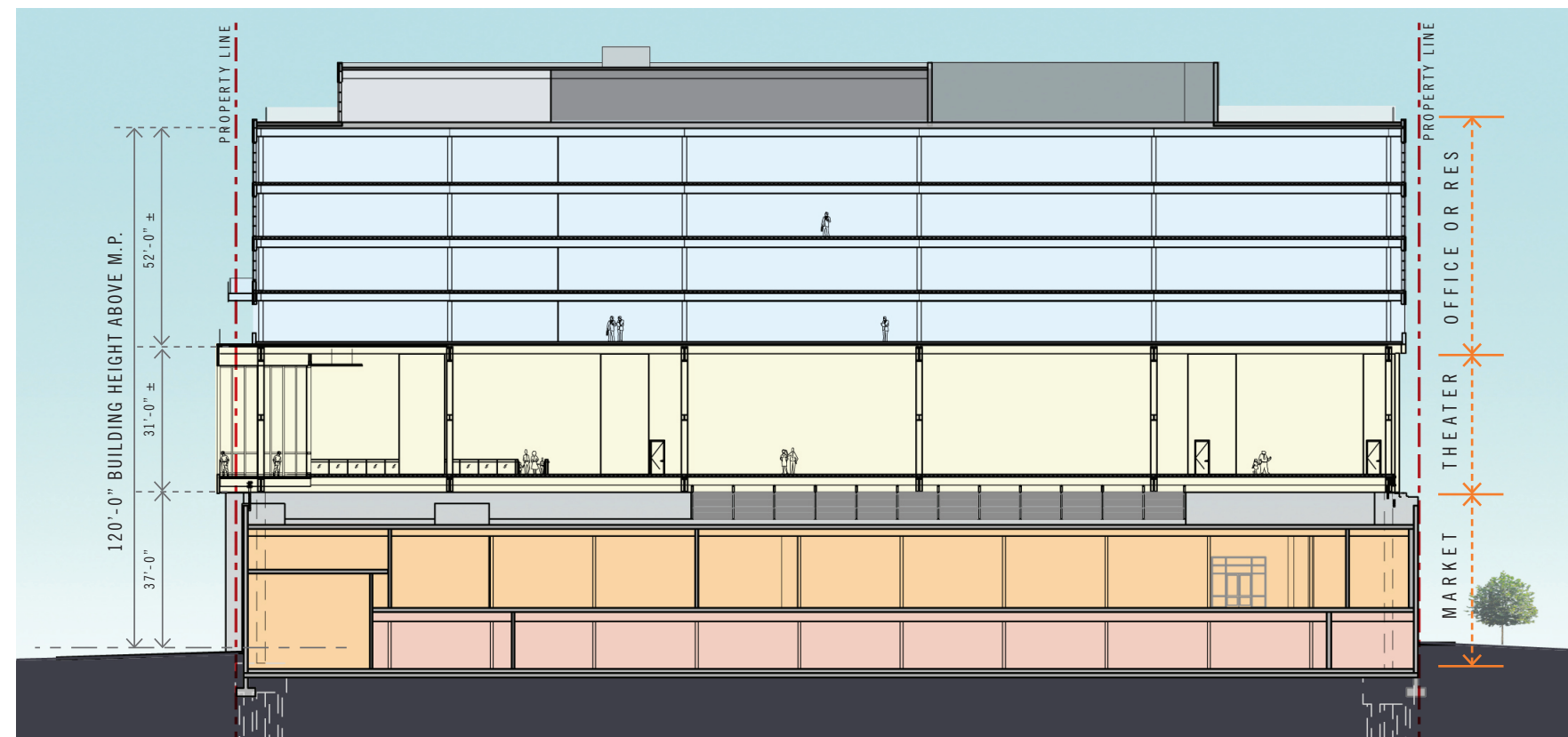
LEGEND:

- Retail Use
- Residential Use - Units
- Residential Use - Amenity
- Service, Parking, & Common Space
- Green Roof
- Potential PV Panel Location
- Screened Rooftop Mechanical
- Pool
- Roof Structure
- Court - Open
- Court - Closed
- Residential Pedestrian Entry
- Potential Retail Pedestrian Entry
- Parking & Loading Vehicular Entry





BUILDING SECTION A-A



BUILDING SECTION B-B

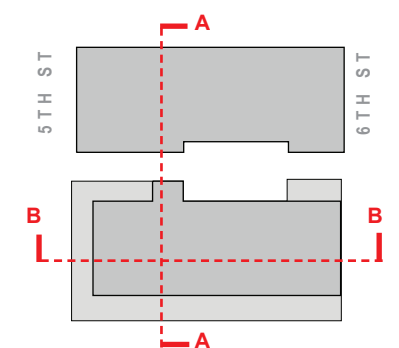
NOTES:

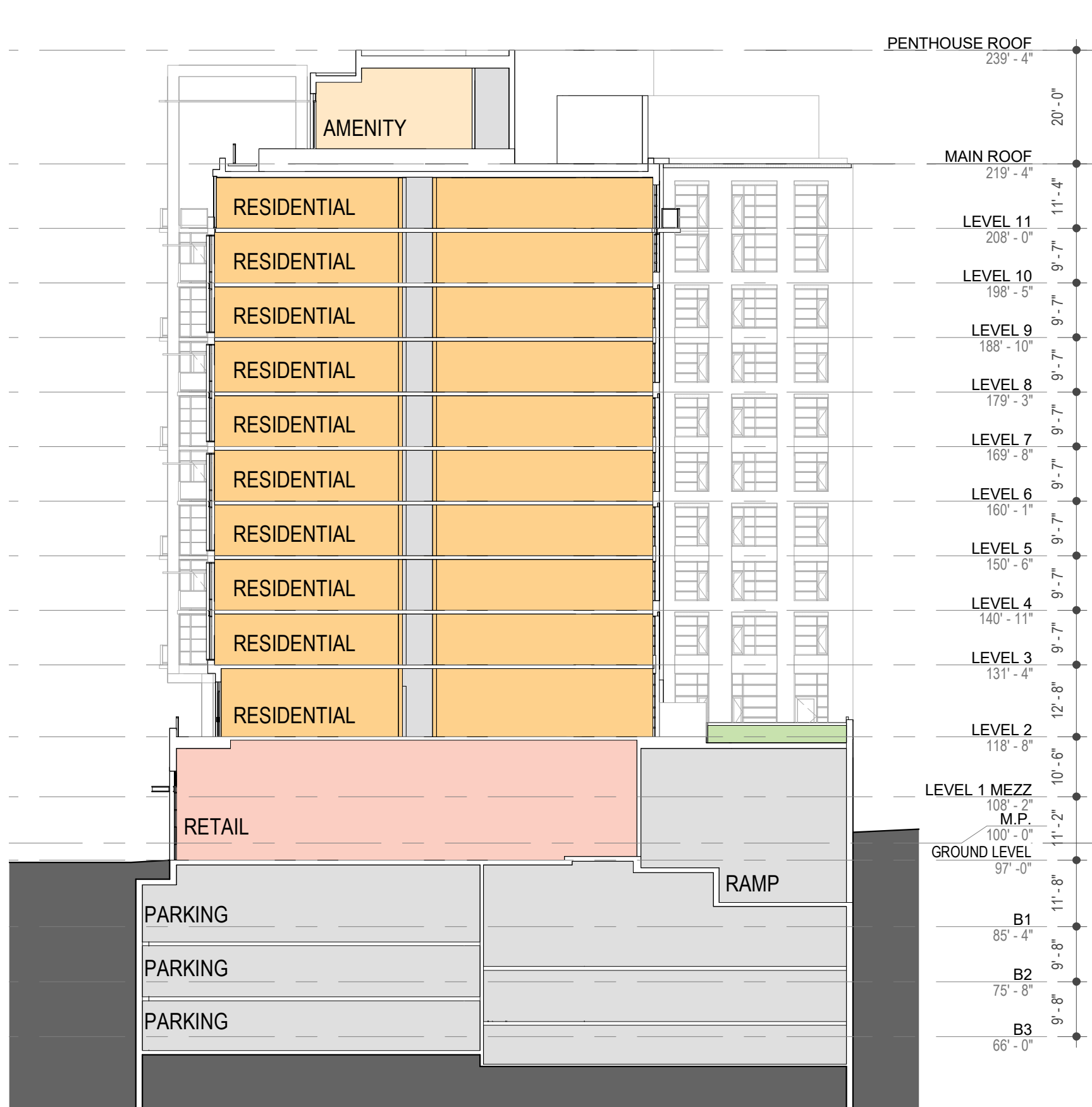
1. REFER TO ROOF PLAN FOR OVERALL BUILDING DIMENSIONS.
2. THE EXTERIOR ELEVATIONS, INCLUDING DOOR AND WINDOW SIZES, NUMBER, AND LOCATIONS, THE INTERIOR PARTITION LOCATIONS, THE NUMBER, SIZE, AND LOCATIONS OF THEATER BOXES, OUTDOOR SPACE, STAIRS, BALCONY, TERRACES, AND ELEVATORS ARE PRELIMINARY AND SHOWN FOR ILLUSTRATIVE PURPOSES ONLY. THE PARKING GARAGE LAYOUT IS SHOWN FOR ILLUSTRATIVE PURPOSES ONLY.
3. ALL SPOT ELEVATIONS ARE RELATIVE TO THE MEASURING POINT, ASSUMED FOR THESE DRAWINGS TO BE +0'-0".
4. ALL BALCONY LOCATIONS SHOWN ARE ILLUSTRATIVE; SIZE/ LOCATION ARE SUBJECT TO CHANGE.

LEGEND

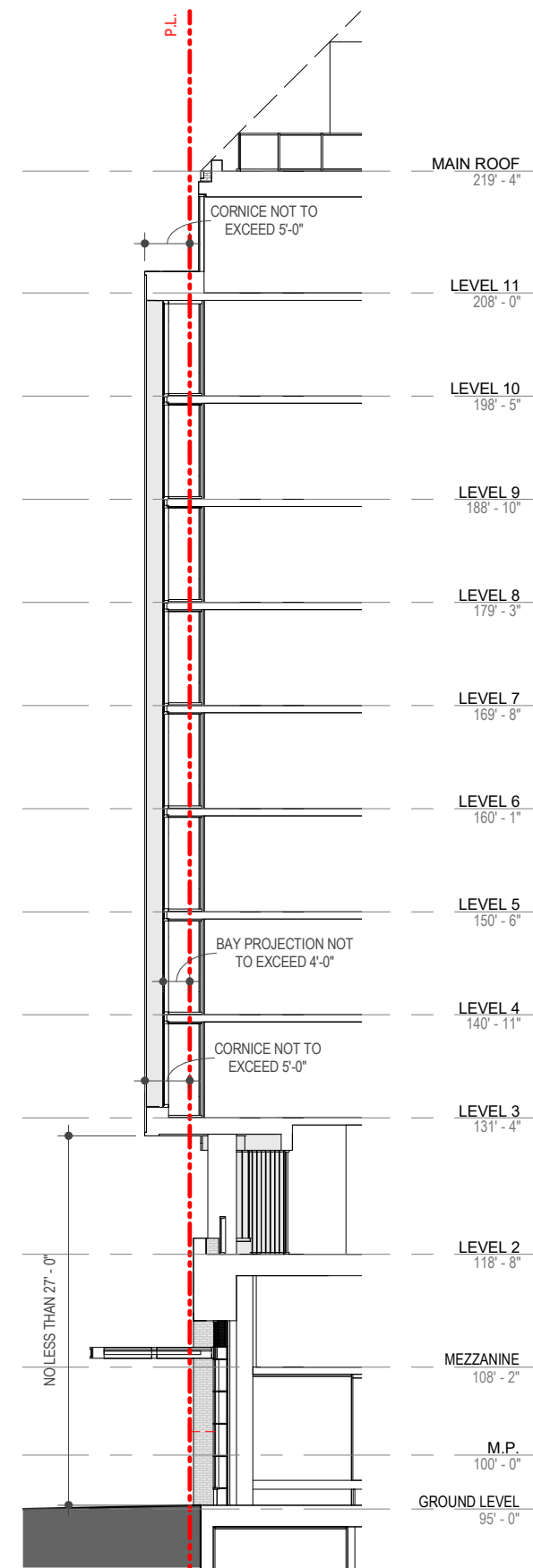
- PROPERTY LINE
- CORE/ SERVICE
- RETAIL
- EVENT
- THEATER
- OFFICE OR RESIDENTIAL
- PARKING
- TERRACE
- ROOF
- OFFICE

KEY PLAN





SECTION AA



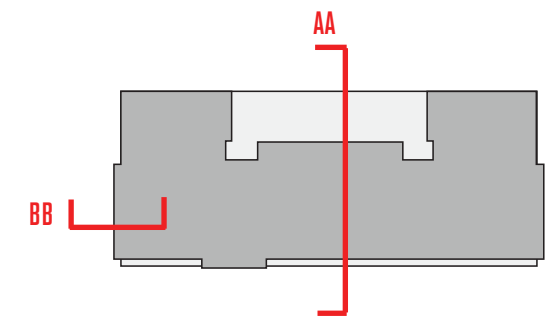
SECTION BB

NOTES:

1. Lot 1 (South Building) shown for illustrative purposes only and is not part of this Second-Stage PUD. Refer to ZC Case No. 14-12 for approved south building information.
2. Unit layout and count, garage layout, penthouse interior layout, and rooftop mechanical equipment locations are conceptual and subject to change.
3. Spaces denoted as "Retail" may include uses in the retail, service, and eating and drinking use categories.
4. Refer to Ground Level Plan for circulation and loading information.
5. Refer to Detailed Elevations for building material identifications, material selections to be identified in subsequent submission.
5. In the event that a structure is built to the subject property within any portion of the dashed areas shown in elevation, the facade within such areas, including windows and masonry, may be deleted and replaced for the portions of such facade comprising the wall meeting such adjacent structure.

LEGEND:

- Retail Use
- Residential Use - Units
- Residential Use - Amenity
- Service, Parking, & Common Space



1329 5TH STREET, NE SECOND-STAGE PUD | 06.03.2019

RETAIL BASE

MATERIAL DESCRIPTION

THE PREDOMINANT MATERIAL OF THE EXSITING RETAIL BASE IS A WHITE MASONRY FACADE .

EXISTING BRICK: CLEANED, RESTORED, REPAINTED

M1



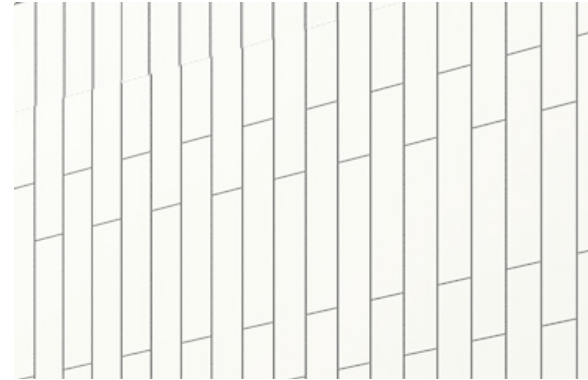
THEATER

MATERIAL DESCRIPTION

THEATER TO BE PREDOMINATELY LARGE FORMAT METAL PANEL WITH GLASS BALCONY AND GLASS TERRACE RAILING

LARGE FORMAT METAL PANEL: M2

(SEE PAGE A17: BLEND OF TEXTURES)

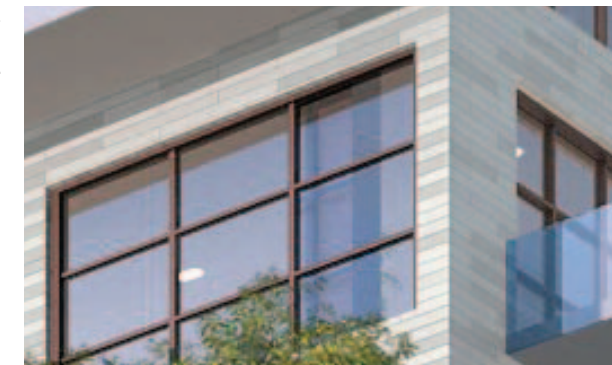


OFFICE OR RESIDENTIAL

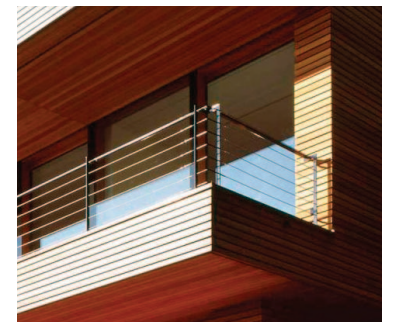
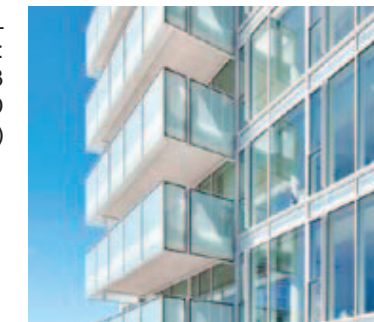
MATERIAL DESCRIPTION

OFFICE OR RES TO BE PREDOMINATELY TILE RAINSCREEN SYSTEM AND GLASS WITH HORIZONTAL BALCONIES.

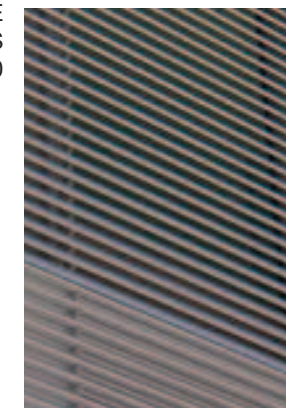
ARCHITECTURAL TILE RAINSCREEN: M4



GLASS/ METAL RAILING: M3 (NORTH AND SOUTH PARCELS)



PENTHOUSE LOUVERS M10



STOREFRONT: M6 NORTH PARCEL

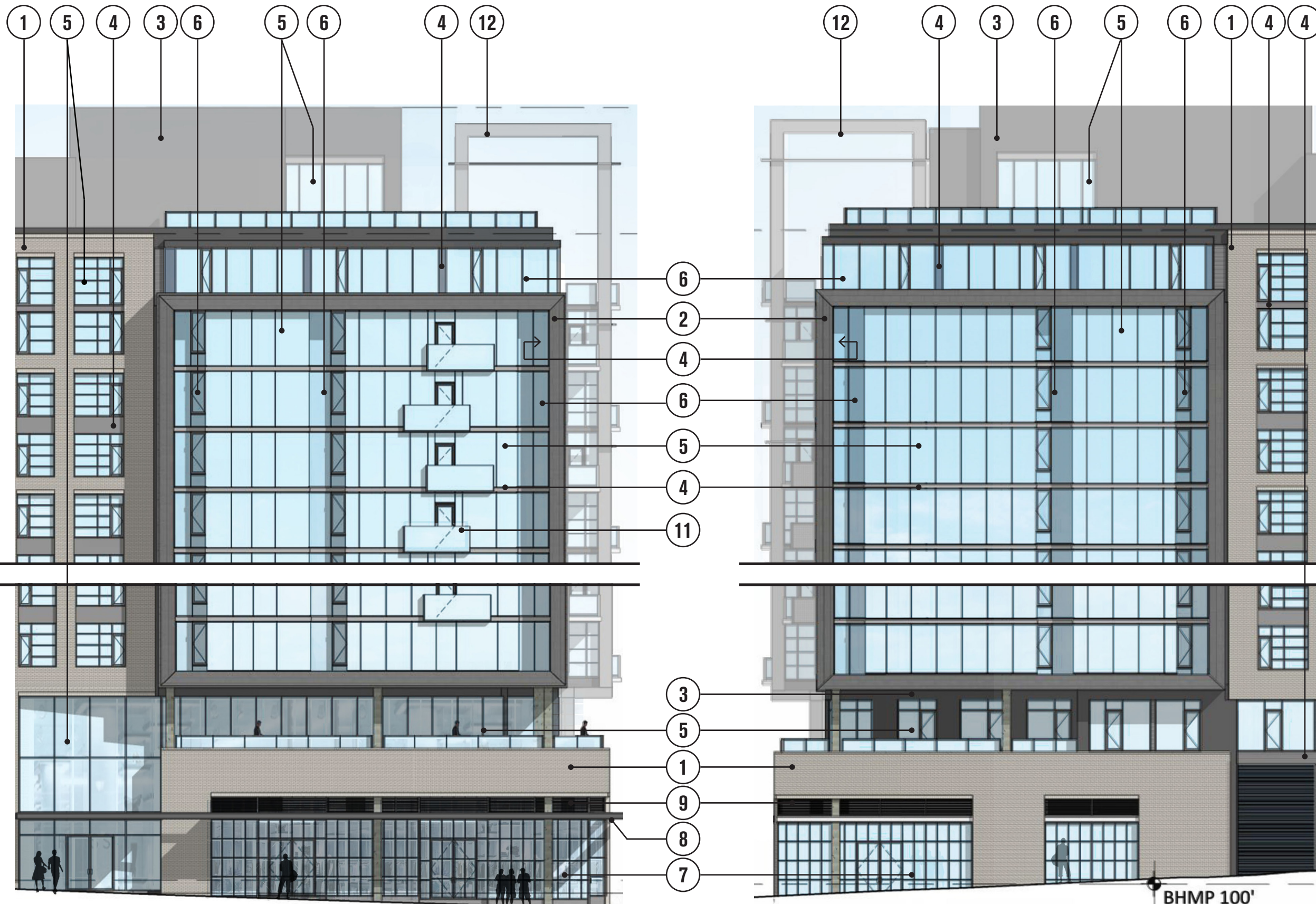


CANOPIES: NORTH PARCEL



GLASS/ METAL RAILING: M3





- ① BRICK A
- ② METAL PANEL - FIELD 1
- ③ METAL PANEL - FIELD 2
- ④ METAL PANEL - ACCENT
- ⑤ ALUMINUM WINDOW SYSTEM GLASS A
- ⑥ ALUMINUM WINDOW SYSTEM GLASS B
- ⑦ RETAIL STOREFRONT
- ⑧ CANOPY
- ⑨ LOUVERS
- ⑩ BALCONY
- ⑪ JULIET BALCONY
- ⑫ METAL SUPERSTRUCTURE

1. WEST

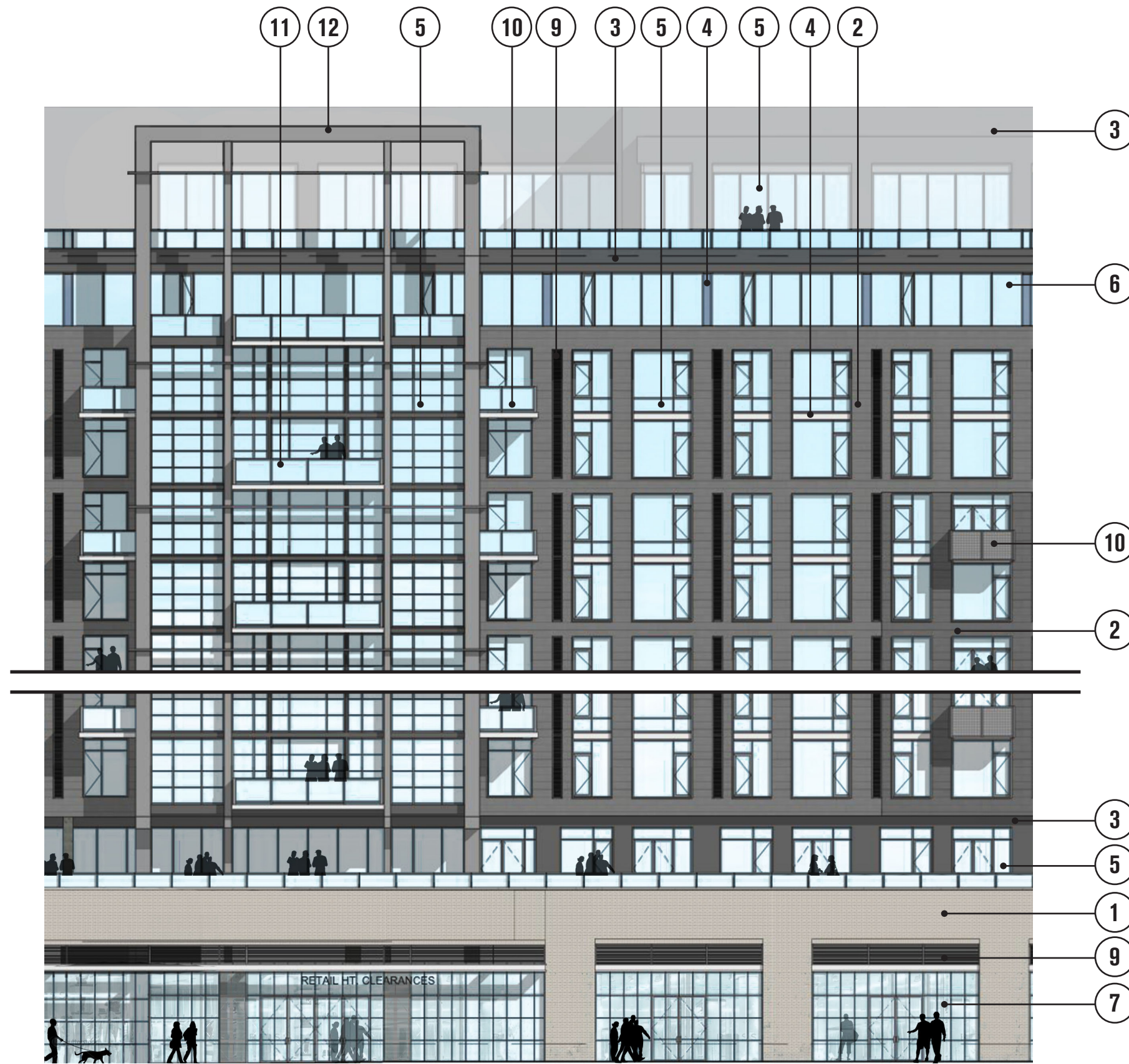
2. EAST

1329 5TH STREET, NE SECOND-STAGE PUD | 06.03.2019

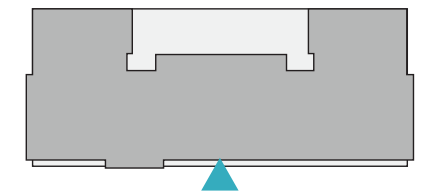


DETAILED EAST/WEST ELEVATIONS A31

PAGE INTENTIONALLY BLANK



- ① BRICK A
- ② METAL PANEL - FIELD 1
- ③ METAL PANEL - FIELD 2
- ④ METAL PANEL - ACCENT
- ⑤ ALUMINUM WINDOW SYSTEM GLASS A
- ⑥ ALUMINUM WINDOW SYSTEM GLASS B
- ⑦ RETAIL STOREFRONT
- ⑧ CANOPY
- ⑨ LOUVERS
- ⑩ BALCONY
- ⑪ JULIET BALCONY
- ⑫ METAL SUPERSTRUCTURE



1329 5TH STREET, NE SECOND-STAGE PUD | 06.03.2019



DETAILED SOUTH ELEVATIONS **A32**

PAGE INTENTIONALLY BLANK