








-  SIDEWALKS
-  SHARED BIKE PATH
-  DEDICATED BIKE PATH
-  ONE-WAY PRIMARY STREET
-  TWO-WAY SECONDARY STREET
-  ONE-WAY PRIMARY STREET
-  TWO-WAY SECONDARY STREET

WESLEY HOUSING DEVELOPMENT CORPORATION  
 695 CHESTER AVE #40  
 ALEXANDRIA, VA 22304

RATHERBERGGOSS ASSOCIATES, P.C.  
 1871 CRESS BRANCH WAY  
 ROCKVILLE, MD 20855  
 301-595-0073

CAPITOL ENGINEERING GROUP  
 1823 K STREET NW  
 SUITE 315  
 WASHINGTON, DC 20006  
 202-216-0039

1 HAWAII AVENUE, NE  
 THIRDAVENUE.NE  
 WASHINGTON, DC 20001

REVISIONS


DATE	01/04/19
PROJECT NO.	2018-014
DRAWN BY	BW/ALC
CHECKED BY	TH/MS

WESLEY HOUSING DEVELOPMENT CORPORATION

CIRCULATION PLAN

Bonstra | Harsign ARCHITECTS

CIRCULATION PLAN

© 2018 - Bonstra | Harsign ARCHITECTS

1728 Fourteenth Street, NW, Suite 300  
 Washington, DC 20009-4309

www.bonstra.com 202.588.9373 T

A0.07

ZONING COMMISSION  
 District of Columbia  
 CASE NO.19-01  
 EXHIBIT NO.2D2





**WESLEY HOUSING DEVELOPMENT CORPORATION**  
 5515 CHEROKEE AVE #240  
 ALEXANDRIA, VA 22312

**RATHGEBER/GOSS ASSOCIATES, P.C.**  
 15871 CRABBS BRANCH WAY  
 ROCKVILLE, MD 20855  
 301-590-0073

**CAPITOL ENGINEERING GROUP**  
 1825 K STREET NW  
 SUITE 375  
 WASHINGTON, DC 20006  
 202-216-0039

STRUCTURAL ENG CLIENT  
 MEP ENGINEER

**1 HAWAII AVENUE**  
 1 HAWAII AVENUE, NE  
 WASHINGTON, DC 20011

REVISIONS

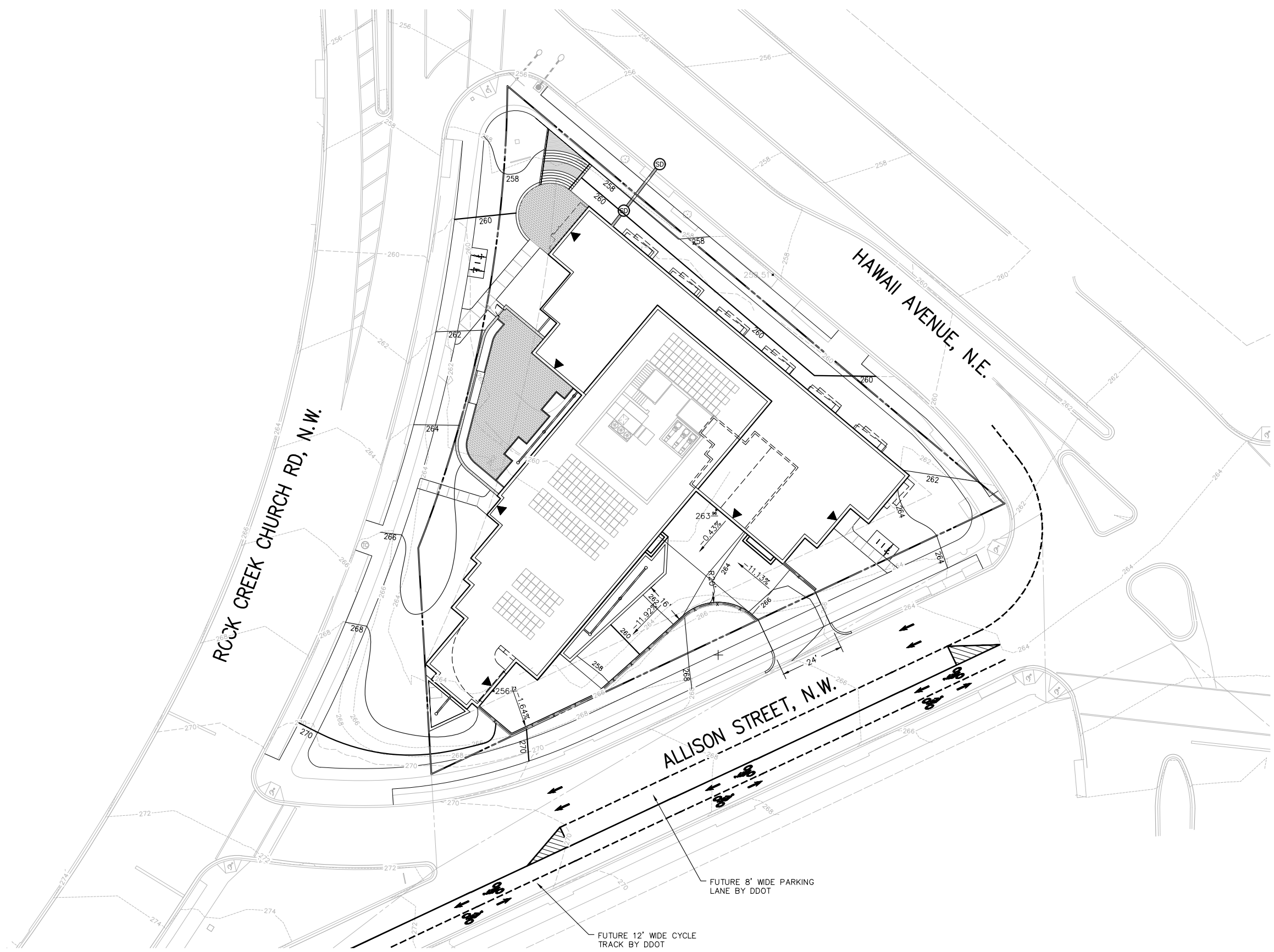
DATE: 01/04/19  
 PROJECT NO: VCO481A  
 DRAWN BY: BJR  
 CHECKED BY: KUO



**Bonstra Haresign ARCHITECTS**

GRADING PLAN

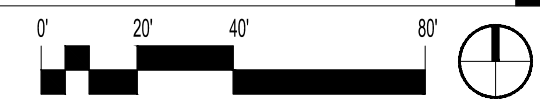
**C.03**



**WESLEY HOUSING DEVELOPMENT CORPORATION**

**GRADING PLAN**

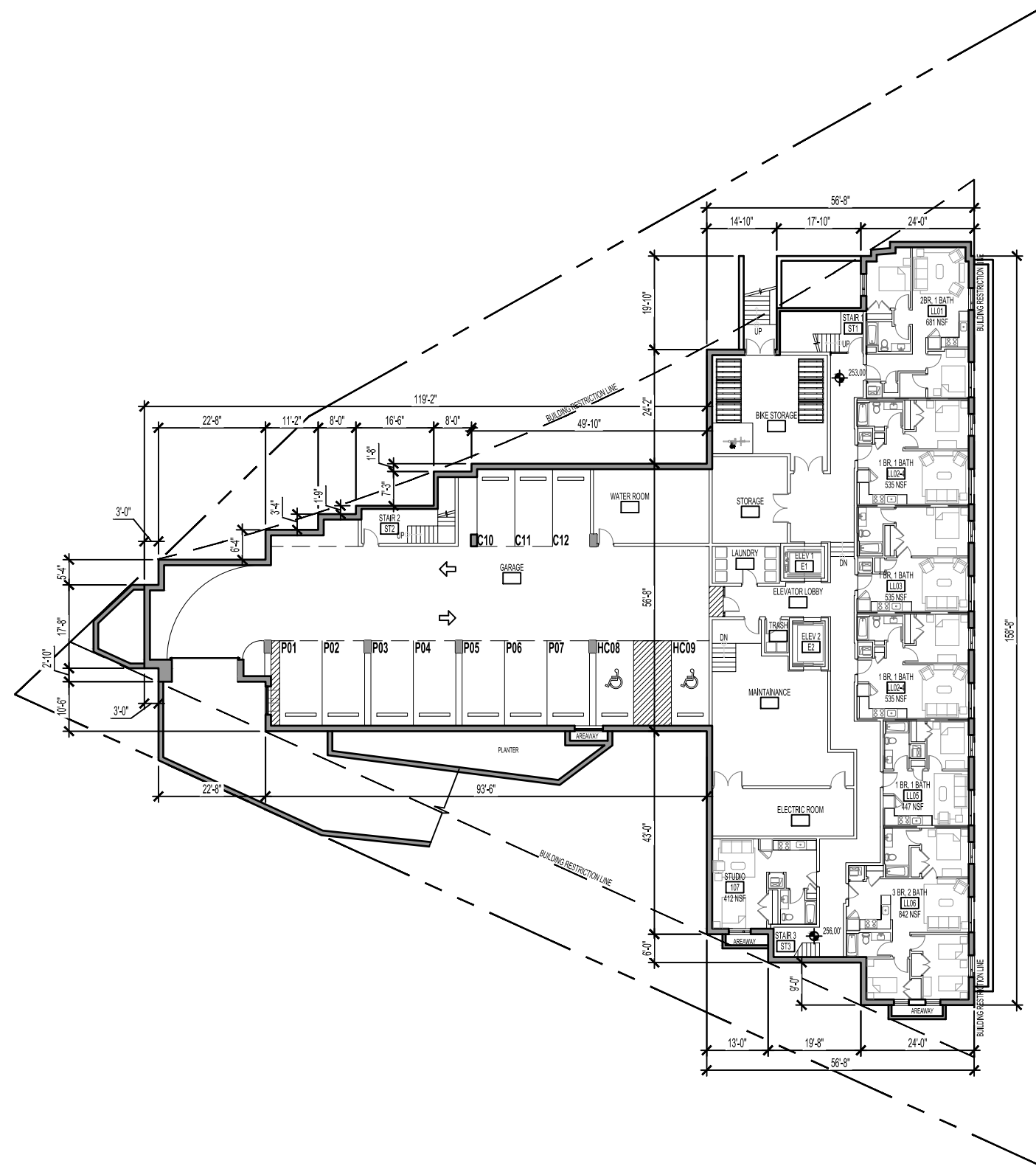
© 2018 - Bonstra | Haresign ARCHITECTS s:\0001-1000\0481A -1 Hawaii Ave NE - PUD\cadd\preliminary\VCO481A\_600.dwg, -- Jan 04, 2019 AT 1:34:03 PM



1728 Fourteenth Street, NW, Suite 300  
 Washington, DC 20009-4309

www.bonstra.com 202 588 9373 T

LAYOUT: C.03 GRADING, Plotted By: ruhl

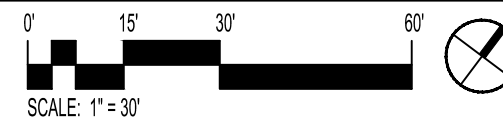


Notes:  
 The number, size, and location of units, stairs and elevators are preliminary and shown for illustrative purposes only. Final layouts may vary.

**WESLEY HOUSING DEVELOPMENT CORPORATION**

**CELLAR FLOOR PLAN**

© 2018 - Bonstra | Haresign ARCHITECTS



**Bonstra | Haresign**  
**ARCHITECTS**

1728 Fourteenth Street, NW, Suite 300  
 Washington, DC 20009-4309

www.bonstra.com 202 | 588 9373 T

CELLAR FLOOR PLAN

**A1.01**

REVISIONS

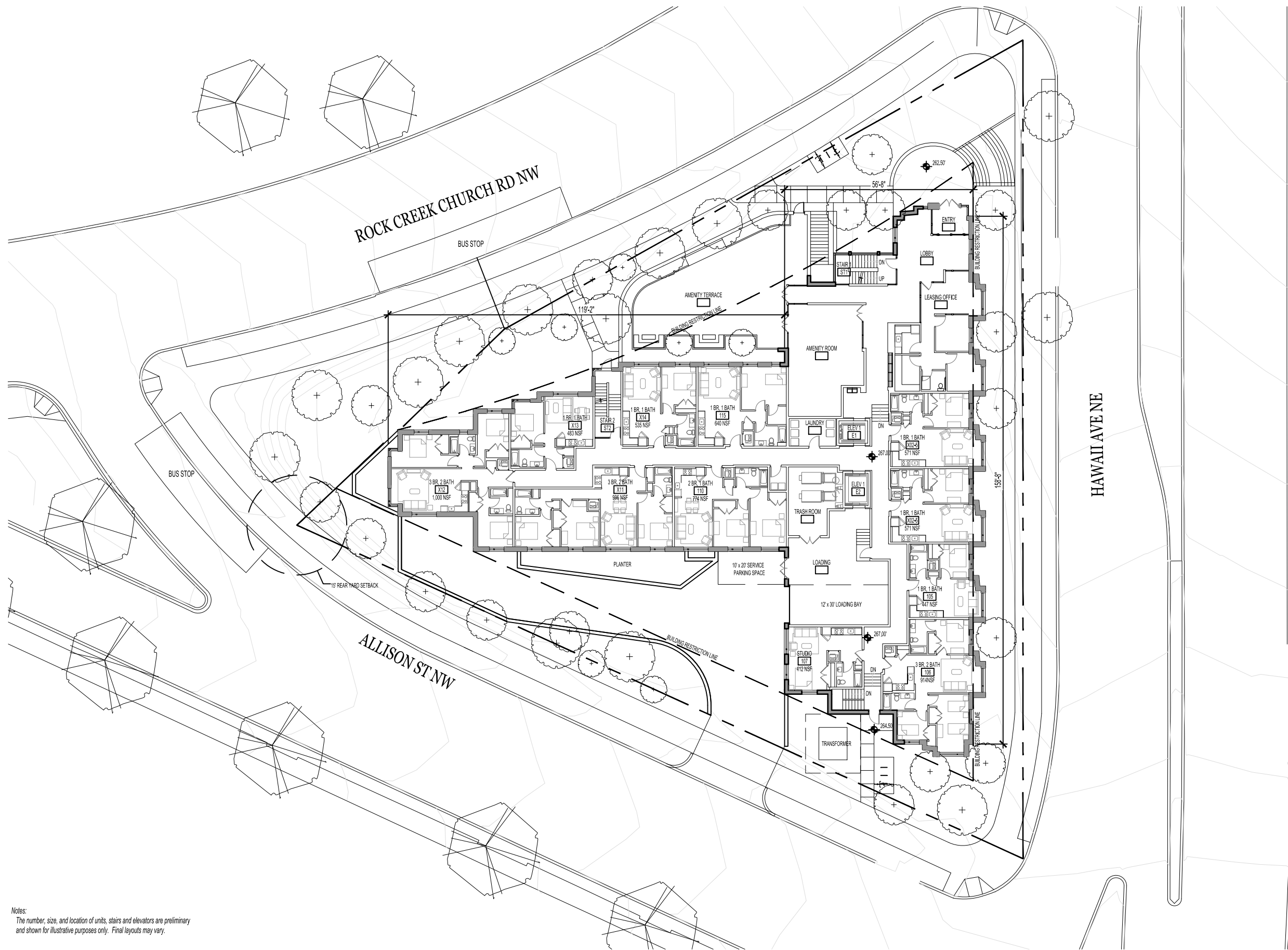
DATE: 01/04/19  
 PROJECT NO: 2018-014  
 DRAWN BY: RM/IM/RK  
 CHECKED BY: DH/RL

MEP ENGINEER  
**CAPITOL ENGINEERING GROUP**  
 1825 K STREET NW  
 SUITE 375  
 WASHINGTON, DC 20006  
 202-216-0039

STRUCTURAL ENG - CLIENT  
**RATHGERBER/GOSS ASSOCIATES, P.C.**  
 15871 CRABBS BRANCH WAY  
 ROCKVILLE, MD 20855  
 301-590-0073

**1 HAWAII AVENUE, NE**  
 1 HAWAII AVENUE, NE  
 WASHINGTON, DC 20011

**WESLEY HOUSING DEVELOPMENT CORPORATION**  
 5515 CHEROKEE AVE #240  
 ALEXANDRIA, VA 22312

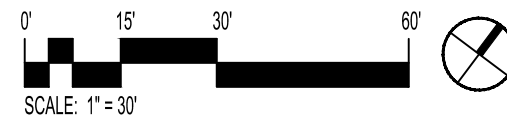


Notes:  
 The number, size, and location of units, stairs and elevators are preliminary  
 and shown for illustrative purposes only. Final layouts may vary.

**WESLEY HOUSING DEVELOPMENT CORPORATION**

**GROUND FLOOR PLAN**

© 2018 - Bonstra | Haresign ARCHITECTS



**Bonstra | Haresign**  
**ARCHITECTS**

1728 Fourteenth Street, NW, Suite 300  
 Washington, DC 20009-4309

www.bonstra.com 202 588 9373 T

**WESLEY HOUSING DEVELOPMENT CORPORATION**  
 5515 CHEROKEE AVE #240  
 ALEXANDRIA, VA 22312

**RATHGERBER/GOSS ASSOCIATES, P.C.**  
 15871 CRABBS BRANCH WAY  
 ROCKVILLE, MD 20855  
 301-590-0073

**CAPITOL ENGINEERING GROUP**  
 1825 K STREET NW  
 SUITE 375  
 WASHINGTON, DC 20006  
 202-216-0039

**1 HAWAII AVENUE, NE**  
 1 HAWAII AVENUE, NE  
 WASHINGTON, DC 20011

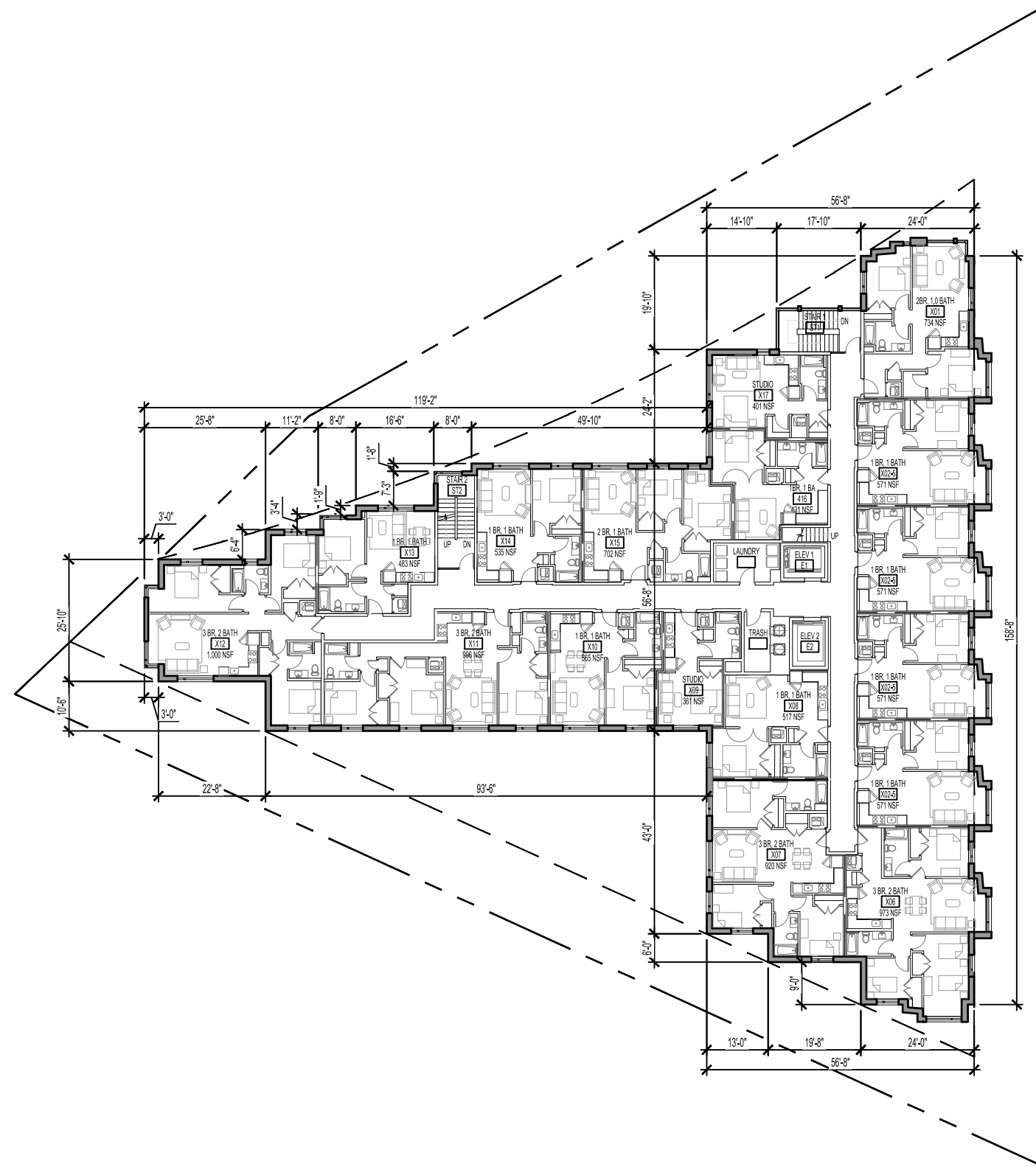
REVISIONS


DATE: 01/04/19  
 PROJECT NO: 2018-014  
 DRAWN BY: RM/IMRK  
 CHECKED BY: DHIRM

GROUND FLOOR PLAN

**A1.02**



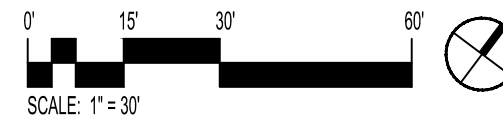


Notes:  
 The number, size, and location of units, stairs and elevators are preliminary and shown for illustrative purposes only. Final layouts may vary.

# WESLEY HOUSING DEVELOPMENT CORPORATION

## 4TH FLOOR PLAN

© 2018 - Bonstra | Haresign ARCHITECTS



**Bonstra | Haresign**  
**ARCHITECTS**

1728 Fourteenth Street, NW, Suite 300  
 Washington, DC 20009-4309

www.bonstra.com 202 588 9373 T

4TH FLOOR PLAN

A1.04

REVISIONS


DATE: 01/04/19  
 PROJECT NO: 2018-014  
 DRAWN BY: RM/IM/RK  
 CHECKED BY: DH/IRM

STRUCTURAL ENG CLIENT  
**WESLEY HOUSING DEVELOPMENT CORPORATION**  
 5515 CHEROKEE AVE #240  
 ALEXANDRIA, VA 22312

RATHGERBER/GOSS ASSOCIATES, P.C.  
 15871 CRABBS BRANCH WAY  
 ROCKVILLE, MD 20855  
 301-590-0073

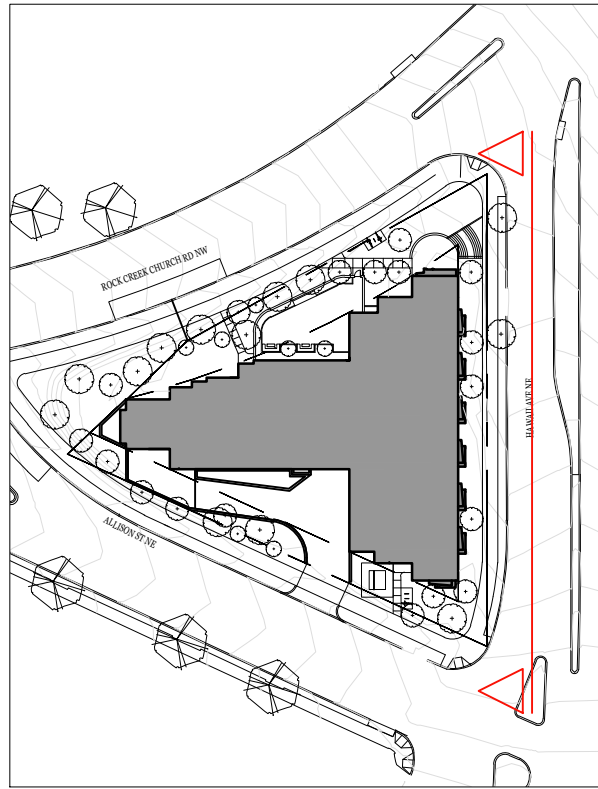
MEP ENGINEER  
**CAPITOL ENGINEERING GROUP**  
 1825 K STREET NW  
 SUITE 375  
 WASHINGTON, DC 20006  
 202-216-0039

**1 HAWAII AVENUE, NE**  
 1 HAWAII AVENUE, NE  
 WASHINGTON, DC 20011





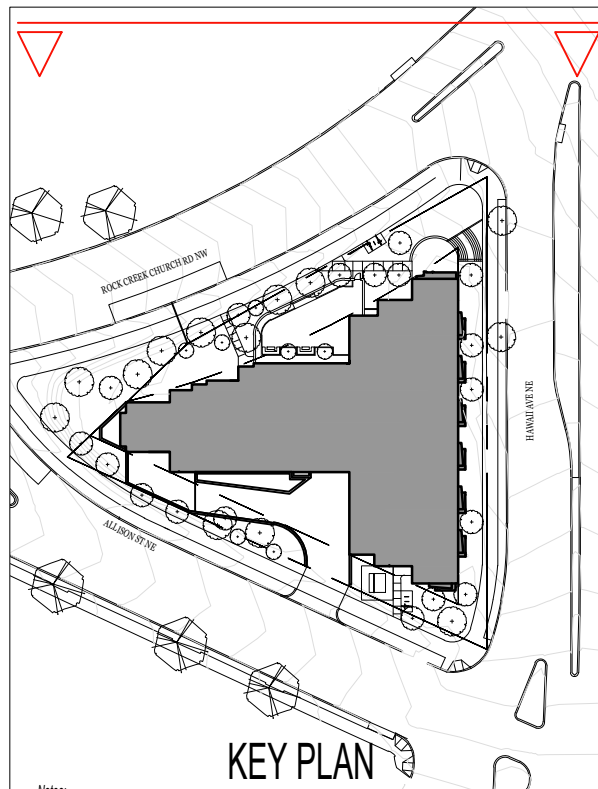




KEY PLAN



EAST ELEVATION



KEY PLAN

Notes:  
The number, size, and location of units, stairs and elevators are preliminary and shown for illustrative purposes only. Final layouts may vary.



NORTH ELEVATION

WESLEY HOUSING DEVELOPMENT CORPORATION  
5515 CHEROKEE AVE #40  
ALEXANDRIA, VA 22312

RATHGERBER/GOSS ASSOCIATES, P.C.  
15871 CRABBS BRANCH WAY  
ROCKVILLE, MD 20855  
301-590-0073

CAPITOL ENGINEERING GROUP  
1825 K STREET NW  
SUITE 375  
WASHINGTON, DC 20006  
202-216-0039

CLIENT  
STRUCTURAL ENG  
MEP ENGINEER

1 HAWAII AVENUE, NE  
1 HAWAII AVENUE, NE  
WASHINGTON, DC 20011

REVISIONS

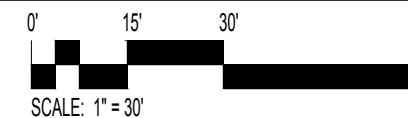
DATE: 01/04/19  
PROJECT NO: 2018-014  
DRAWN BY: RM/JMRK  
CHECKED BY: DH/RM

WESLEY HOUSING DEVELOPMENT CORPORATION

© 2018 - Bonstra | Haresign ARCHITECTS

Bonstra | Haresign ARCHITECTS

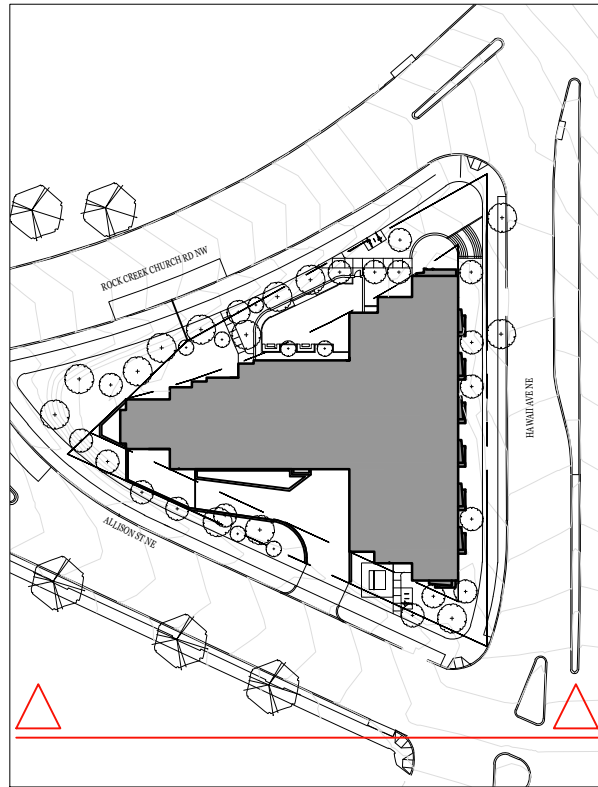
SECTIONS



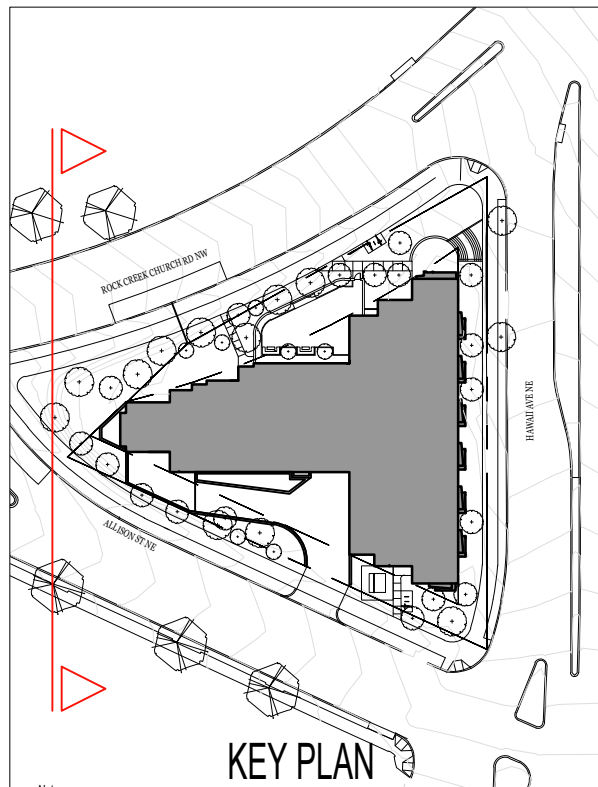
1728 Fourteenth Street, NW, Suite 300  
Washington, DC 20009-4309

www.bonstra.com 202 | 588 9373 T

A2.01



KEY PLAN



KEY PLAN

Notes:  
The number, size, and location of units, stairs and elevators are preliminary and shown for illustrative purposes only. Final layouts may vary.



SOUTH ELEVATION



WEST ELEVATION

WESLEY HOUSING DEVELOPMENT CORPORATION  
5515 CHEROKEE AVE #40  
ALEXANDRIA, VA 2312

RATHGERBER/GOSS ASSOCIATES, P.C.  
15871 CRABBS BRANCH WAY  
ROCKVILLE, MD 20855  
301-590-0073

CAPITOL ENGINEERING GROUP  
1825 K STREET NW  
SUITE 375  
WASHINGTON, DC 20006  
202-216-0039

CLIENT  
STRUCTURAL ENG  
MEP ENGINEER

1 HAWAII AVENUE, NE  
1 HAWAII AVENUE, NE  
WASHINGTON, DC 20011

REVISIONS

NO.	DATE	DESCRIPTION

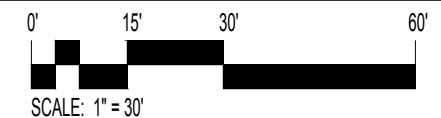
DATE: 01/04/19  
PROJECT NO: 2018-014  
DRAWN BY: RM/JMRK  
CHECKED BY: DH/IRM

WESLEY HOUSING DEVELOPMENT CORPORATION

© 2018 - Bonstra | Haresign ARCHITECTS

Bonstra | Haresign ARCHITECTS

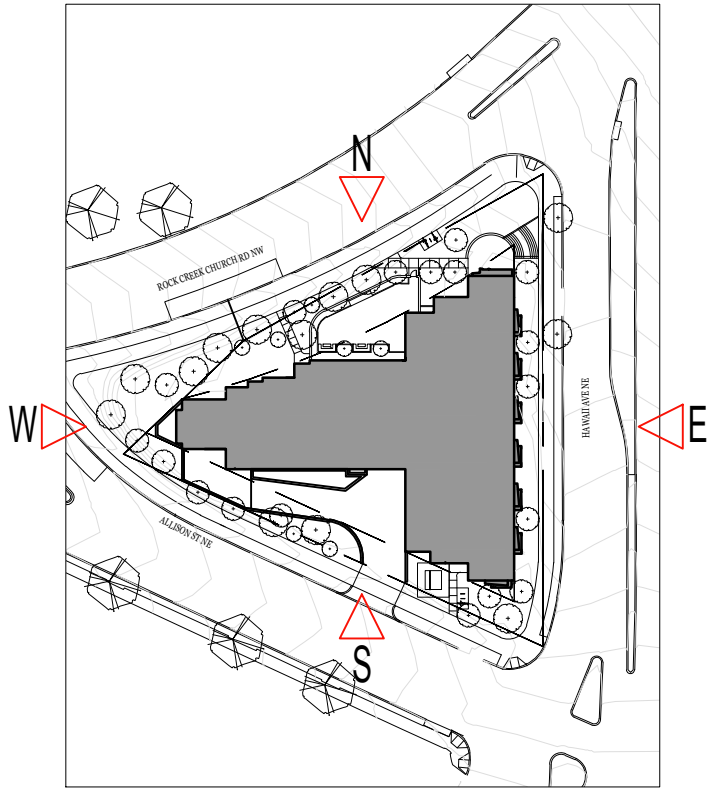
SECTIONS



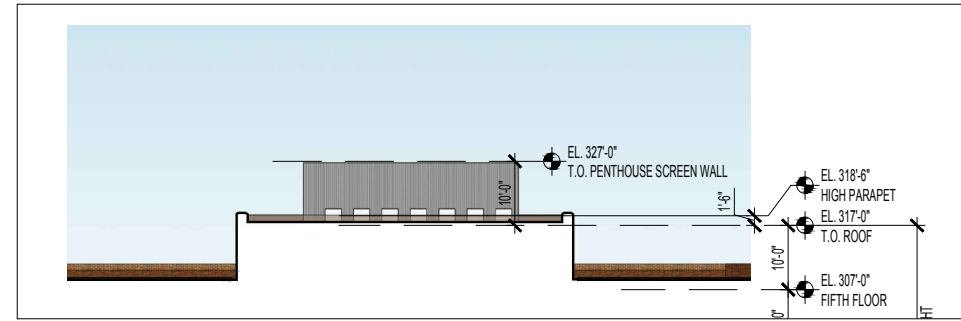
1728 Fourteenth Street, NW, Suite 300  
Washington, DC 20009-4309

www.bonstra.com 202 | 588 9373 T

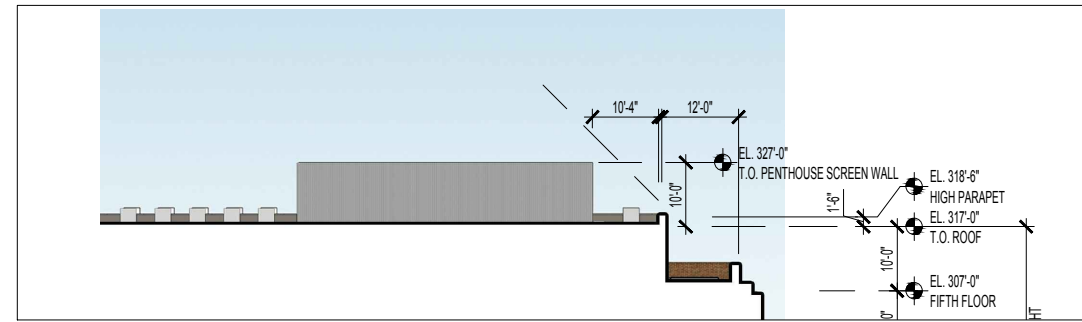
A2.02



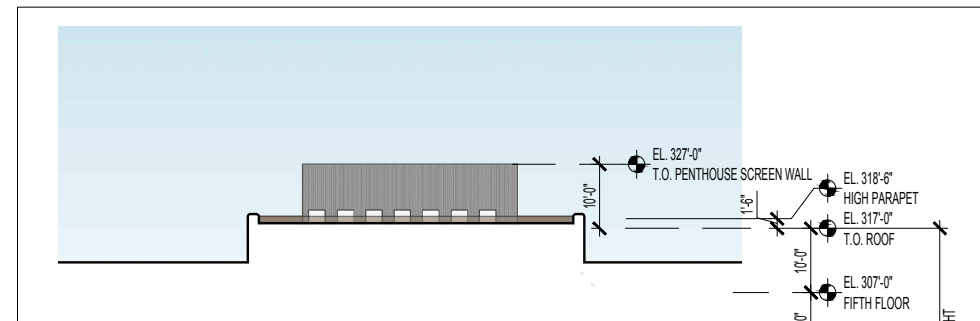
KEY PLAN



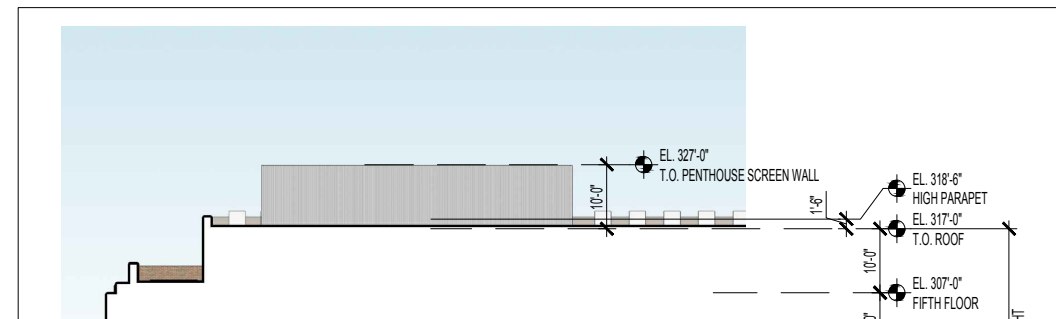
EAST MECHANICAL PENTHOUSE ELEVATION



SOUTH MECHANICAL PENTHOUSE ELEVATION



WEST MECHANICAL PENTHOUSE ELEVATION

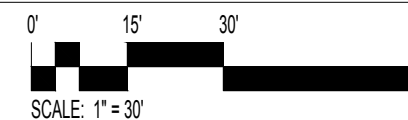


NORTH MECHANICAL PENTHOUSE ELEVATION

Notes:  
The number, size, and location of units, stairs and elevators are preliminary and shown for illustrative purposes only. Final layouts may vary.

**WESLEY HOUSING DEVELOPMENT CORPORATION**

© 2018 - Bonstra | Haresign ARCHITECTS



**Bonstra | Haresign ARCHITECTS**

1728 Fourteenth Street, NW, Suite 300  
Washington, DC 20009-4309

www.bonstra.com 202 | 588 9373 T

CLIENT  
**WESLEY HOUSING DEVELOPMENT CORPORATION**  
5515 CHEROKEE AVE #40  
ALEXANDRIA, VA 22312

STRUCTURAL ENG  
RATHGERBER/GOSS ASSOCIATES, P.C.  
15871 CRABBS BRANCH WAY  
ROCKVILLE, MD 20855  
301-590-0073

MEP ENGINEER  
CAPITOL ENGINEERING GROUP  
1825 K STREET NW  
SUITE 375  
WASHINGTON, DC 20006  
202-216-0039

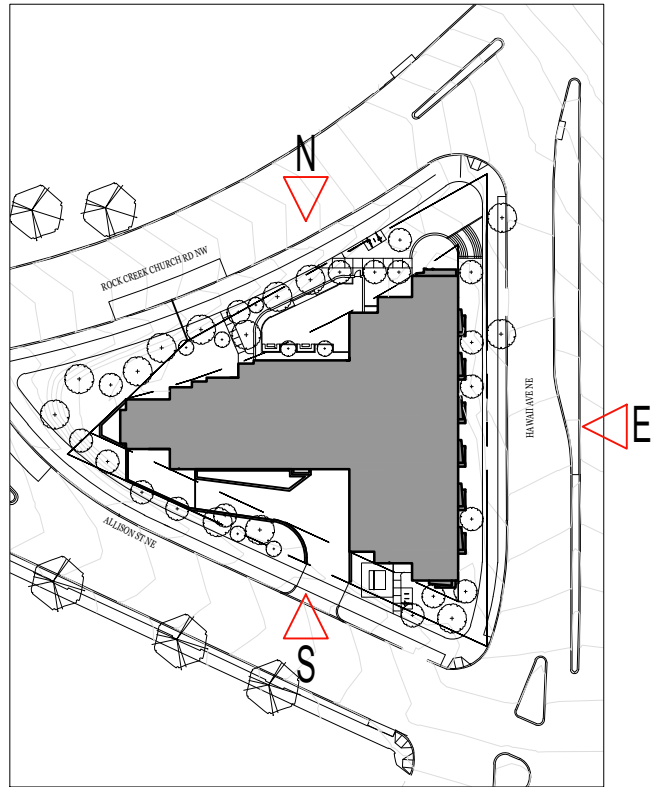
**1 HAWAII AVENUE, NE**  
1 HAWAII AVENUE, NE  
WASHINGTON, DC 20011

REVISIONS


DATE: 01/04/19  
PROJECT NO: 2018-014  
DRAWN BY: RM/JMRK  
CHECKED BY: DH/RM

ELEVATIONS

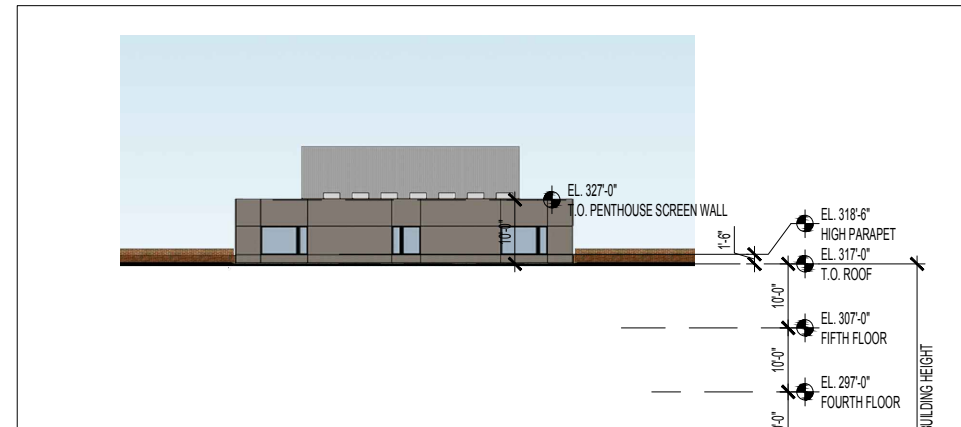
**A2.03**



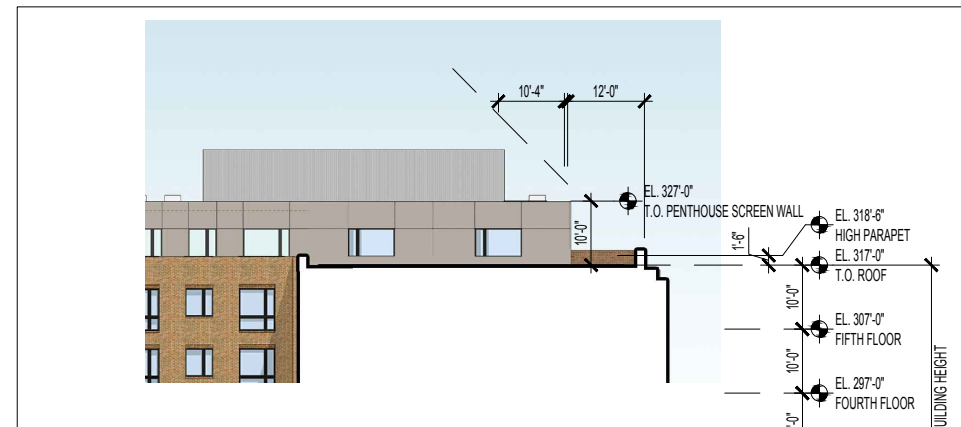
KEY PLAN



PARTIAL 5TH FLOOR ELEVATION - NORTH



PARTIAL 5TH FLOOR ELEVATION - EAST



PARTIAL 5TH FLOOR ELEVATION - WEST

Notes:  
The number, size, and location of units, stairs and elevators are preliminary and shown for illustrative purposes only. Final layouts may vary.

**WESLEY HOUSING DEVELOPMENT CORPORATION**

© 2018 - Bonstra | Haresign ARCHITECTS

CLIENT  
**WESLEY HOUSING DEVELOPMENT CORPORATION**  
5515 CHEROKEE AVE #40  
ALEXANDRIA, VA 22312

STRUCTURAL ENGINEER  
**RATHGERBER/GOSS ASSOCIATES, P.C.**  
15871 CRABBS BRANCH WAY  
ROCKVILLE, MD 20855  
301-590-0073

MEP ENGINEER  
**CAPITOL ENGINEERING GROUP**  
1825 K STREET NW  
SUITE 375  
WASHINGTON, DC 20006  
202-216-0039

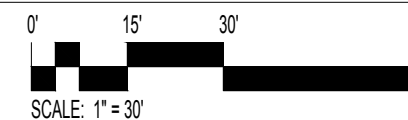
**1 HAWAII AVENUE, NE**  
1 HAWAII AVENUE, NE  
WASHINGTON, DC 20011

REVISIONS


DATE: 01/04/19  
PROJECT NO: 2018-014  
DRAWN BY: RM/JMRK  
CHECKED BY: DH/RM

**Bonstra | Haresign ARCHITECTS**

ELEVATIONS



1728 Fourteenth Street, NW, Suite 300  
Washington, DC 20009-4309

www.bonstra.com 202 | 588 9373 T

**A2.04**



