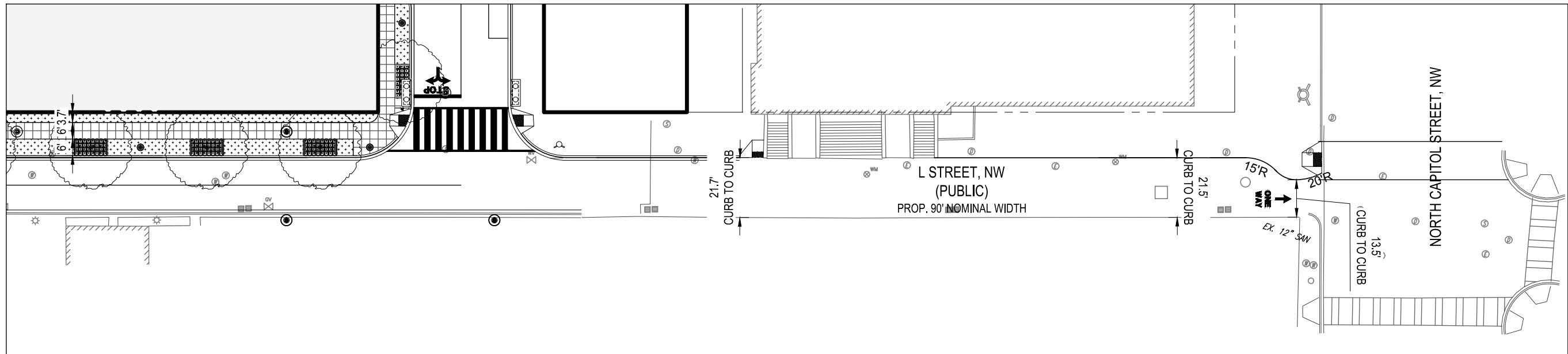
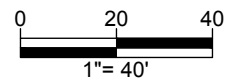
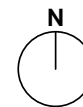
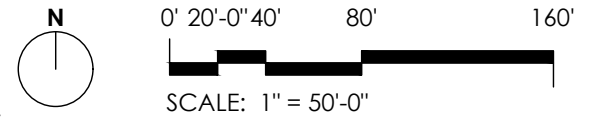
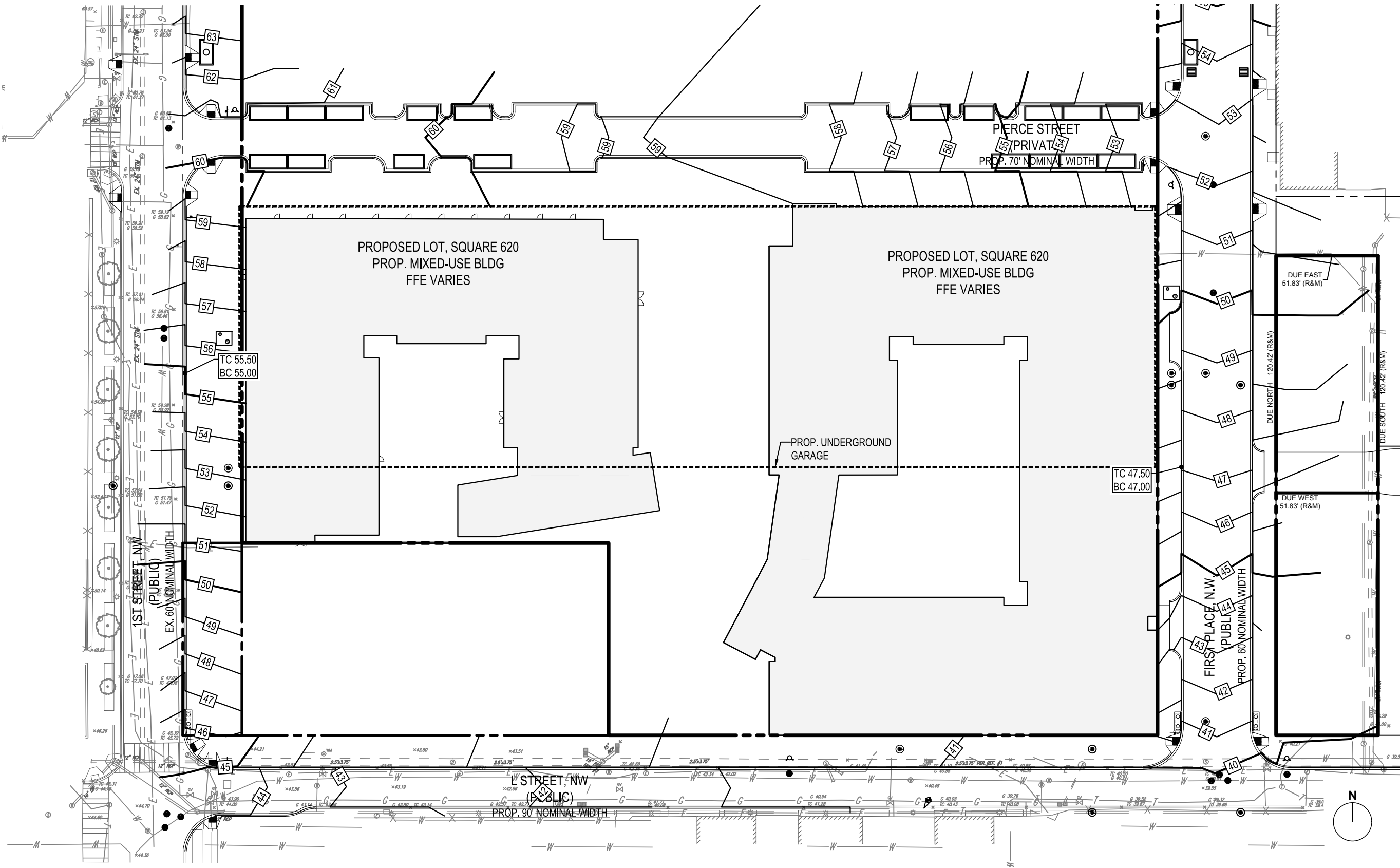


L STREET, NW - RIGHT-OF-WAY CONDITION (EX. 40' WIDTH, DDOT PROP. 90' WIDTH)



L STREET, NW - RIGHT-OF-WAY CONDITION (EX. 40' WIDTH, DDOT PROP. 90' WIDTH)

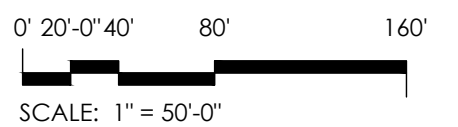
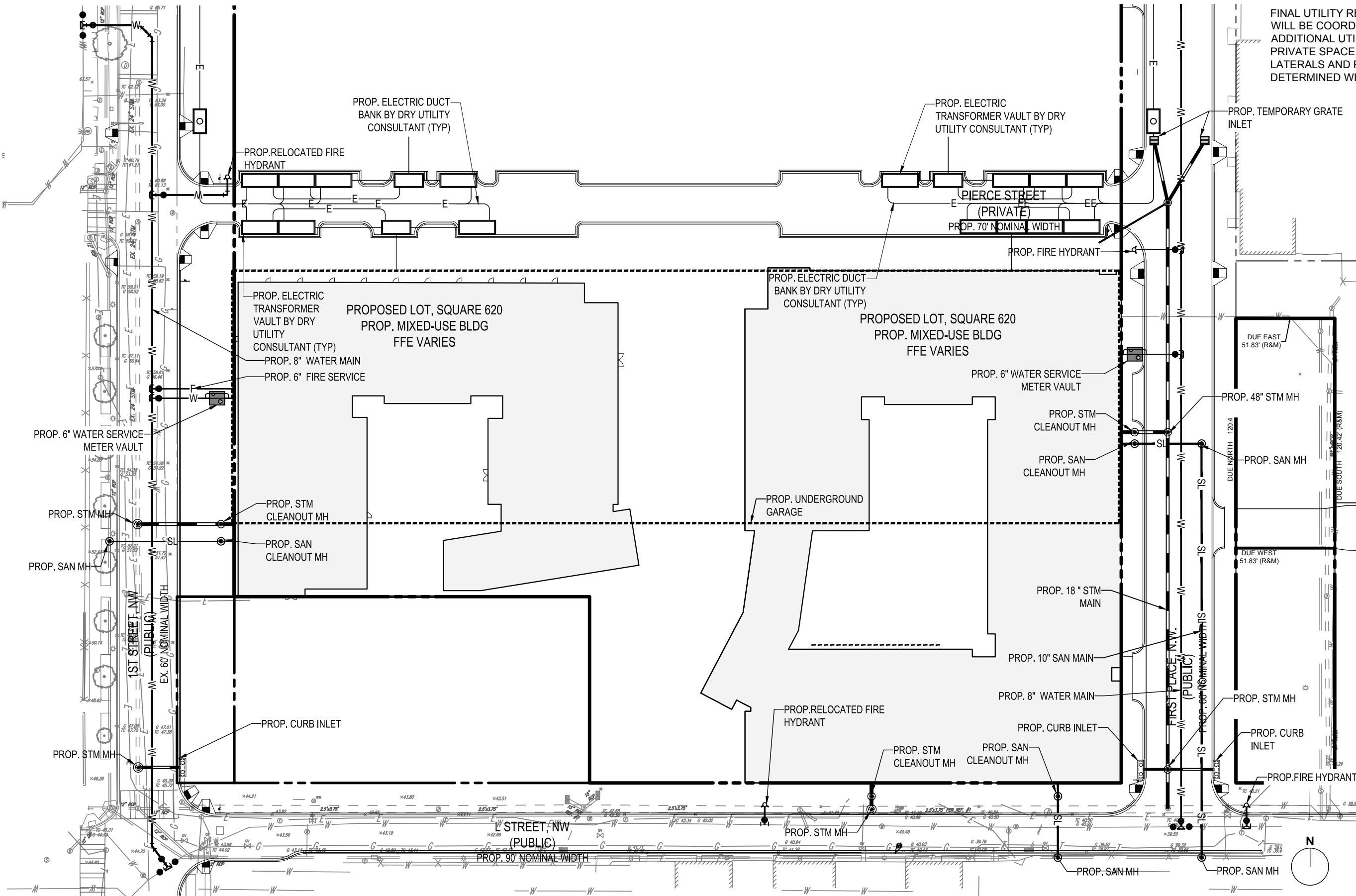




GRADING PLAN C-400

# UTILITY PLAN NARRATIVE

FINAL UTILITY RELOCATIONS AND/OR REPLACEMENTS WILL BE COORDINATED WITH UTILITY PROVIDERS. ADDITIONAL UTILITY IMPROVEMENTS WITHIN PUBLIC AND PRIVATE SPACE AND FINAL LOCATION AND NUMBER OF LATERALS AND POINTS OF CONNECTION WILL BE DETERMINED WITH FINAL CONSTRUCTION DOCUMENTS.



C-500 UTILITY PLAN

TBSC Owner I LLC | SURSUM CORDA | 1112 FIRST TERRACE NW

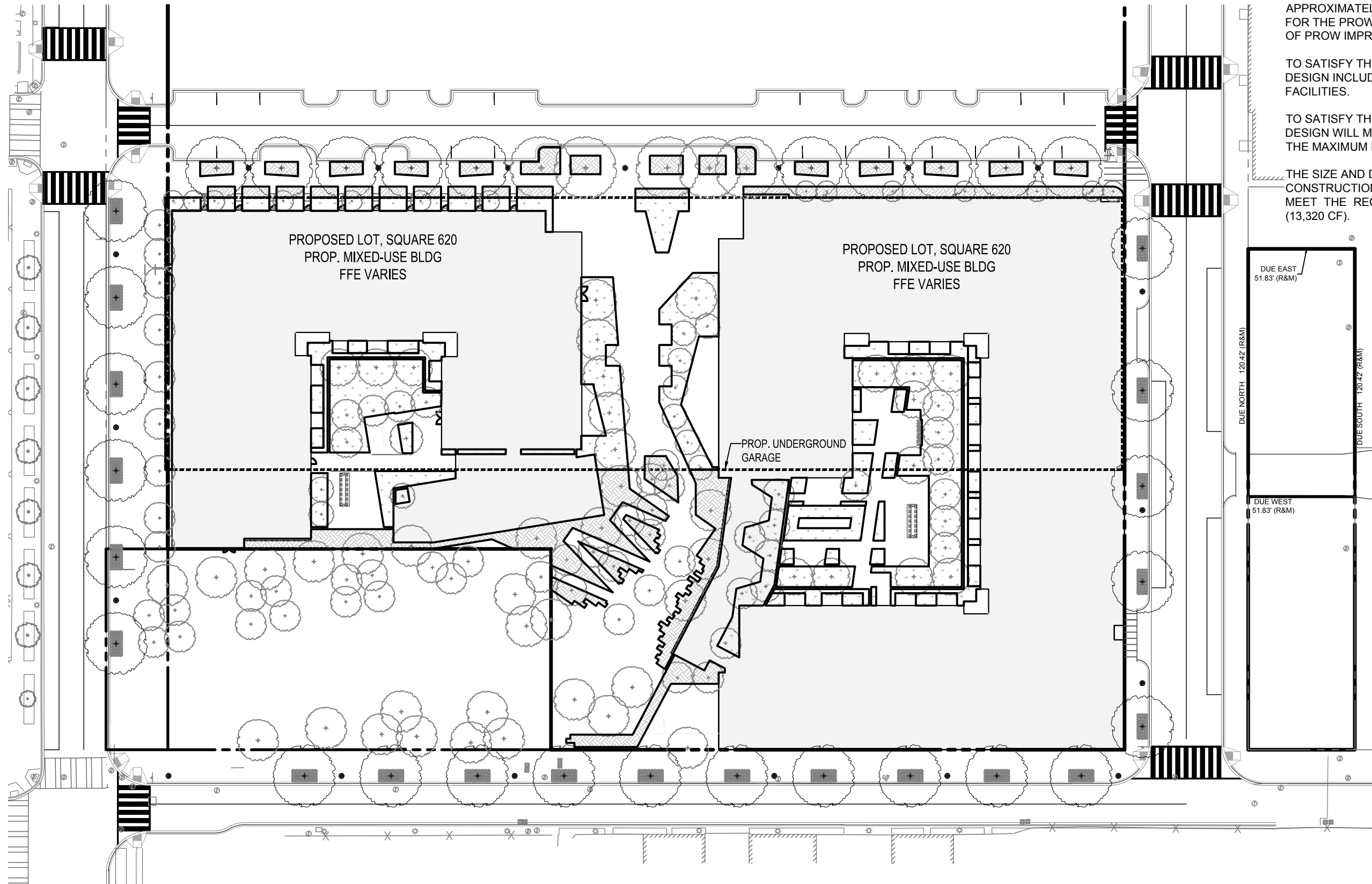
# STORMWATER MANAGEMENT SUMMARY

THERE ARE TWO REQUIREMENTS TO SATISFY THE CURRENT STORMWATER REGULATIONS - THE ON-SITE RETENTION VOLUME AND THE PUBLIC RIGHT-OF-WAY (PROW) RETENTION VOLUME. THE VOLUME REQUIRED TO BE RETAINED ON-SITE (SWRV) IS EQUAL TO APPROXIMATELY 13,320 CUBIC FEET. THE VOLUME REQUIREMENT FOR THE PROW WILL BE DETERMINED BASED ON THE FINAL EXTENTS OF PROW IMPROVEMENTS.


TO SATISFY THE ON-SITE RETENTION VOLUME, THE CURRENT DESIGN INCLUDES INTENSIVE GREEN ROOFS AND BIORETENTION FACILITIES.

TO SATISFY THE PUBLIC RIGHT-OF-WAY RETENTION VOLUME, THE DESIGN WILL MEET STORMWATER RETENTION REQUIREMENTS TO THE MAXIMUM EXTENT PRACTICABLE (MEP).

THE SIZE AND DEPTH OF THE BMPS WILL BE DETERMINED WITH FINAL CONSTRUCTION DOCUMENTS, HOWEVER THE FINAL DESIGN WILL MEET THE REQUIRED ON-SITE STORMWATER RETENTION VOLUME (13,320 CF).



## LEGEND

- INTENSIVE GREEN ROOF 
- PROP. BIORETENTION FACILITY 