

HARTMAN - COX ARCHITECTS
 1071 THOMAS JEFFERSON ST., N.W.
 WASH., D.C. (202) 333-6446
 CIVIL ENGINEERS
 LANDSCAPE ARCHITECTS

4250 CONNECTICUT AVENUE, N.W.
 OFFICE BUILDING AND RETAIL SPACE
 WASHINGTON, D.C.

SITE PLAN AND GRADING PLAN
 SCALE 1/16" = 1'-0"

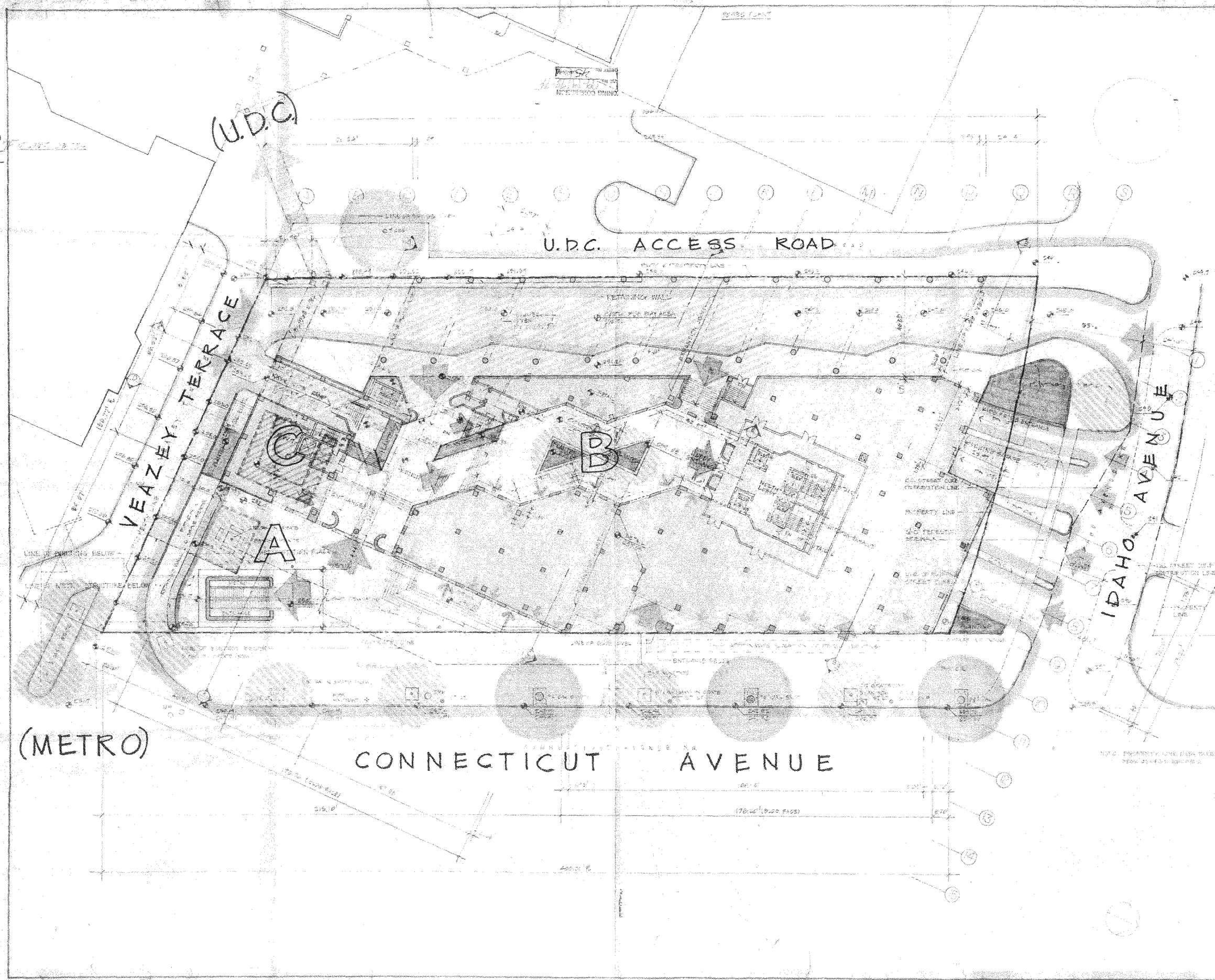
DRAWING SHEET NUMBER
 21

- LEGEND**
- PROPOSED TREE GRATE FOR NEW TREE
 - PROPOSED GRAVE SURROUND FOR EXISTING TREE
 - EXISTING SANITARY SEWER LINE TO BE REMOVED
 - EXISTING WATER LINES TO BE REMOVED
 - EXISTING SEWER LINES
 - PROPOSED SANITARY SEWER
 - PROPOSED WATER LINE
 - PROPOSED STORM SEWER

- NOTE**
1. CONNECTICUT AVE. ROADWAY WIDTH - 60FT
 2. BUS RAMP AND DRIVEWAYS SHOULD BE CONCRETE FINISHED.
 3. VEAZEY TERRACE AND IDAHO AVE. SHOULD BE ASPHALT FINISHED.
 4. CONNECTICUT AVE. GRADES ARE EXISTING
 5. VEAZEY TERRACE GRADES ARE PROPOSED
 6. IDAHO AVE. LOCATION AND GRADES ARE PROPOSED IN CONFORMANCE WITH D.C. DOT PUBLIC SPACE DISTRIBUTION.

Approved Drawings - Exhibit 45

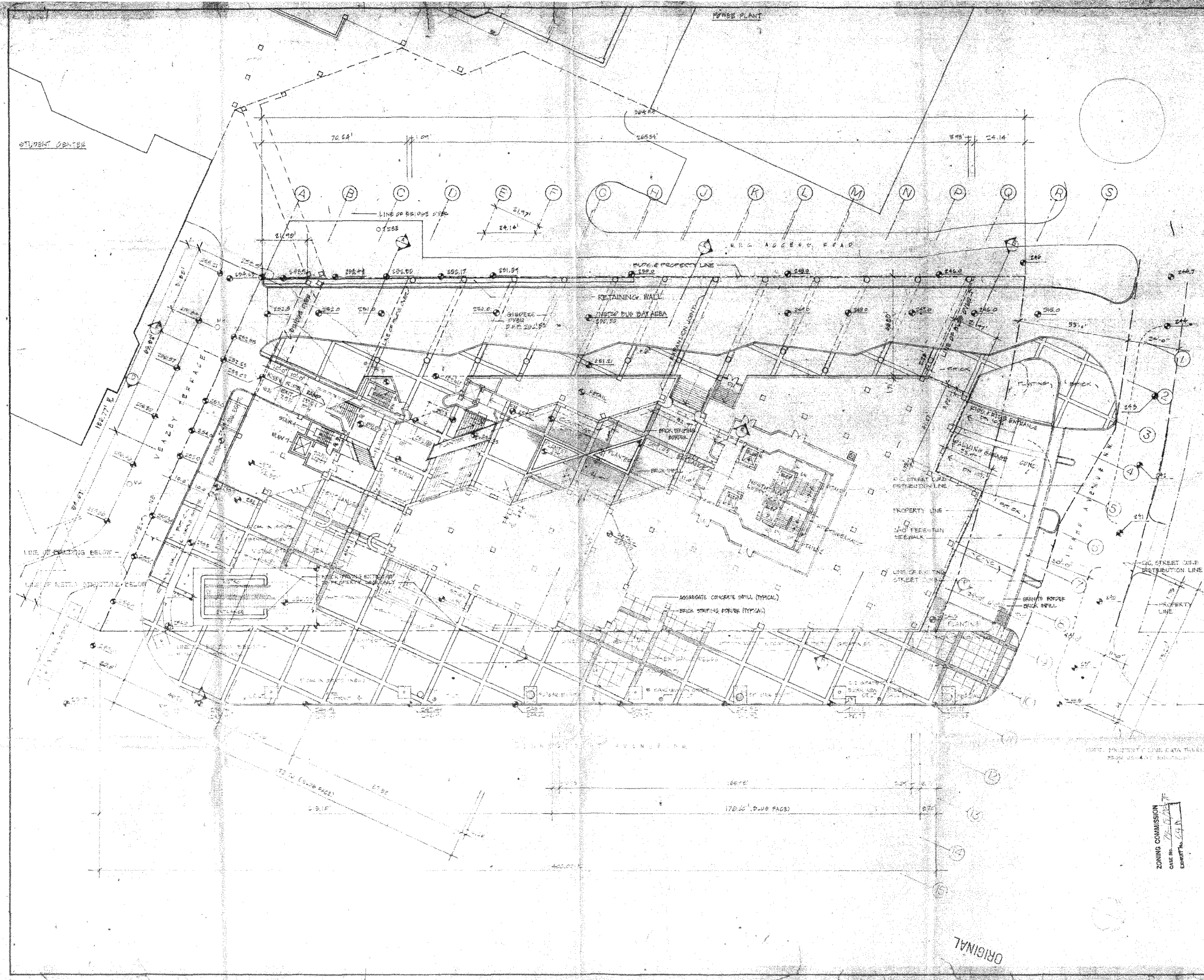
PLANNING COMMISSION
CASE No. 79-177
EXHIBIT No. 15



DRAWING PLAZA LEVEL SCALE 1/8" = 1'-0"	4250 CONNECTICUT AVENUE, N.W. OFFICE BUILDING AND RETAIL SPACE WASHINGTON, D.C.		HARTMAN - COX ARCHITECTS 1071 THOMAS JEFFERSON ST., N.W. WASH., D.C. (202) 333-6446	
	SHEET NUMBER 01	ISSUED	REVIEWED	STRUCTURAL ENGINEERS CONSULTING

HARTMAN - COX ARCHITECTS
1071 THOMAS JEFFERSON ST., N.W.
WASH., D.C. (202) 333-6446
K.C.E. / JACKSON & TULL
LEE KENDRICK / G.I. WORSLEY
STRUCTURAL ENGINEERS
CONSULTING

Approved Drawings - Exhibit 64



HARTMAN - COX ARCHITECTS
 1071 THOMAS JEFFERSON ST., N.W. WASH., D.C. (202) 388-8448
 K.C.E. / JACKSON & TULL STRUCTURAL ENGINEERS
 LEE KENDRICK / G.I. WORSLEY CONSULTING ENGINEERS

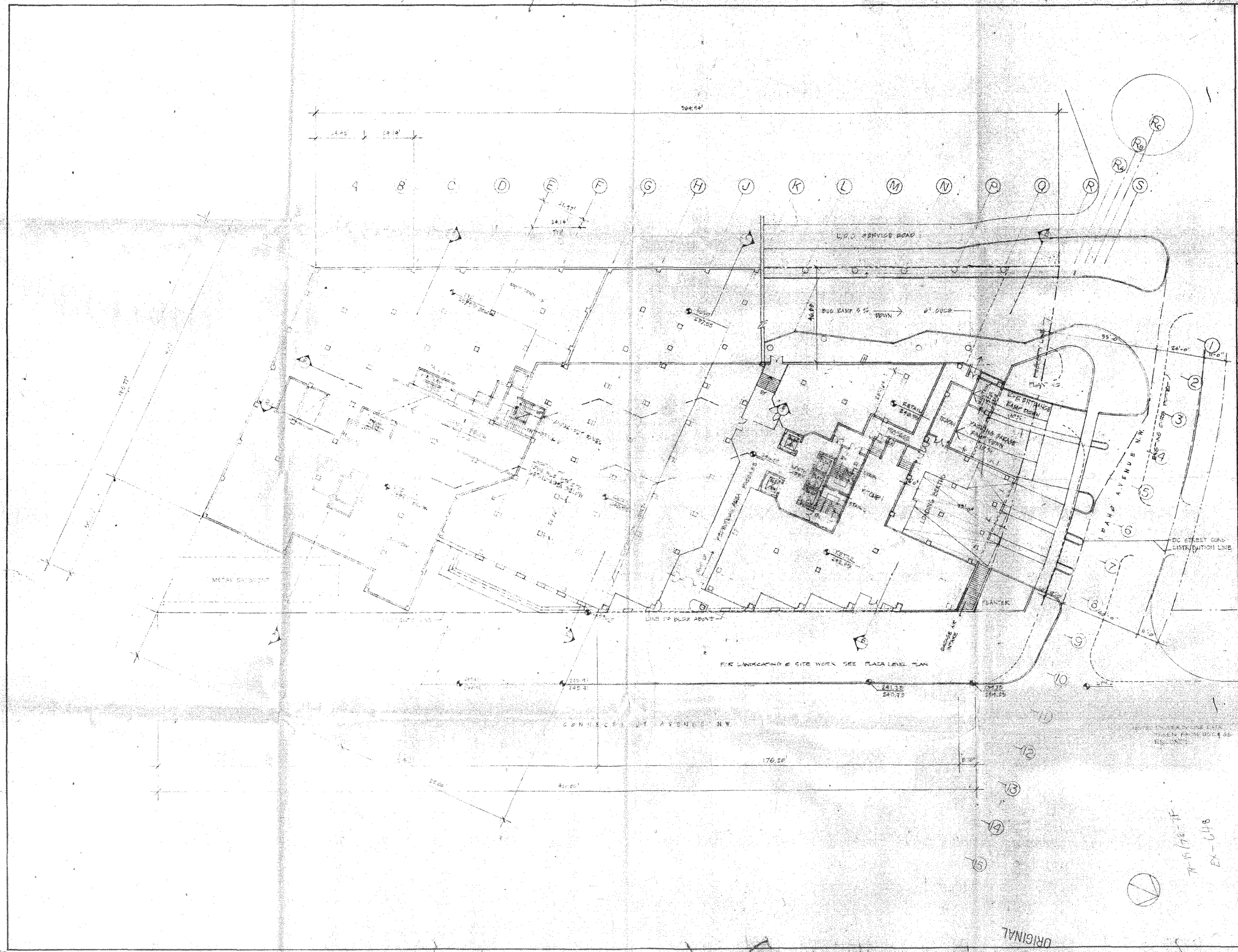
4250 CONNECTICUT AVENUE, N.W.
 OFFICE BUILDING AND RETAIL SPACE
 WASHINGTON, D.C.

DRAWING
1 (B1) PLAZA LEVEL ORIGINAL
 SHEET NUMBER SCALE 1/16"=1'-0"

ZONING COMMISSION
 CASE NO. 7-17-77
 EXHIBIT NO. 64A

ORIGINAL

APRIL 4, 1980
 REVISION
 MARCH 27, 1980
 ISSUED



HARTMAN-COX ARCHITECTS
 1071 THOMAS JEFFERSON ST.
 WASH., D.C. 20004

K.C.E. / JACKSON & TULL
 STRUCTURAL ENGINEERS

L.F.E. KENDRICK / G.L. WORSLEY
 CONSULTING ENGINEERS

ISSUED
 MARCH 23, 1960

REVISED
 (1) 2.3.60

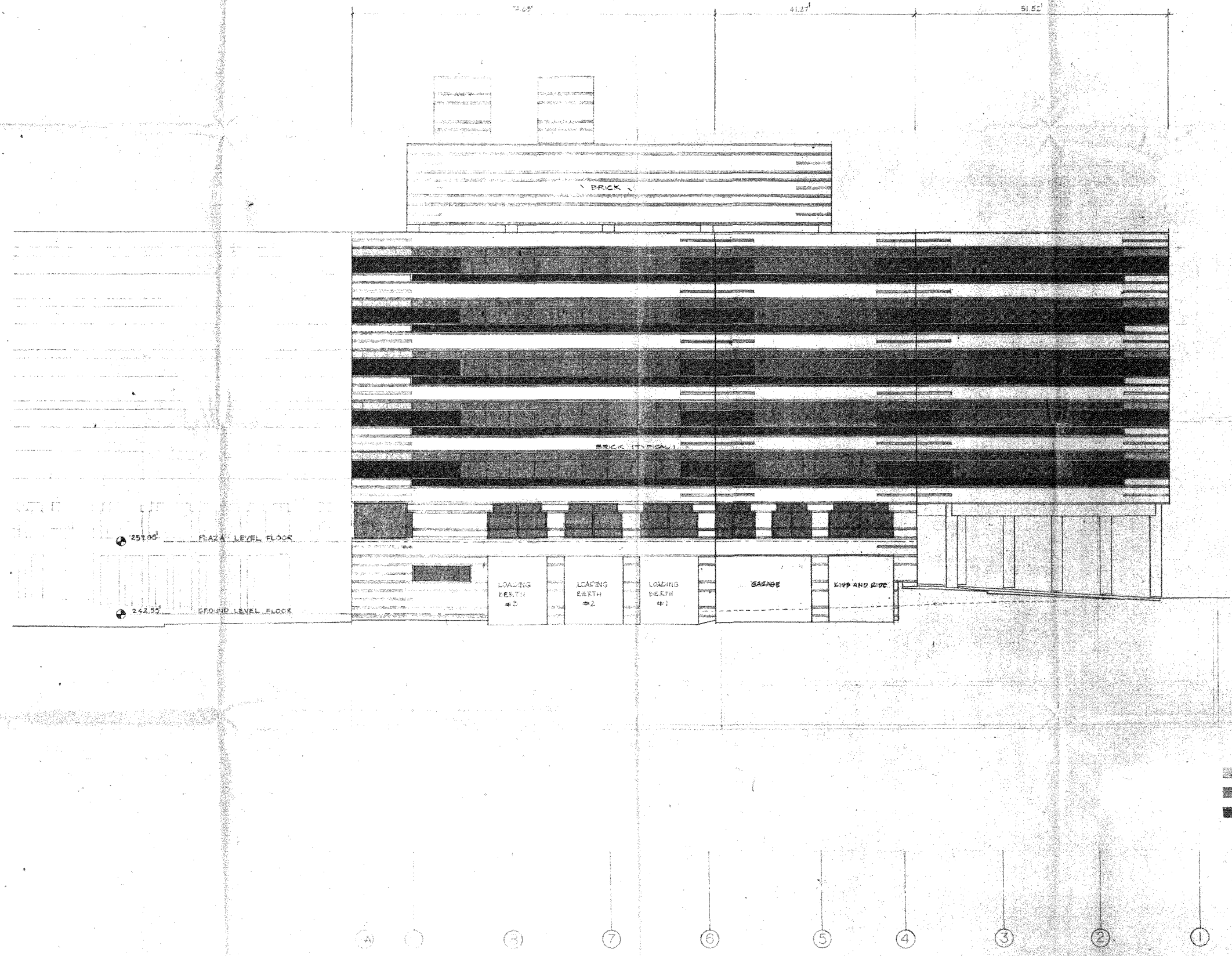
4250 CONNECTICUT AVENUE
 OFFICE BUILDING
 WASHINGTON, D.C.

SCALE
 1/16" = 1'-0"

DRAWING
2 (A) GROUND LEVEL ORIGINAL

ORIGINAL

7-19-76-HF
 EX-646



P	EL. 330.55'	18'-0"
PH	EL. 320.05'	9'-0"
7	EL. 309.55'	9'-0"
6	EL. 299.05'	9'-0"
5	EL. 288.55'	9'-0"
4	EL. 278.05'	9'-0"
3	EL. 267.55'	9'-0"
PL	EL. 257.05'	9'-0"
K&R	EL. 257.55'	9'-0"
P1	EL. 228.55'	9'-0"
P2	EL. 217.55'	9'-0"

REFLECTIVE GLASS
 CLEAR GLASS
 TINTED GLASS

HARTMAN - COX ARCHITECTS
 1071 THOMAS JEFFERSON ST., N.W.
 WASH., D.C. (202) 333-6446
 K.C.E., JACKSON & TULL
 LEE KENDRICK / G.I. WORSLEY
 STRUCTURAL ENGINEERS
 CONSULTING ENGINEERS

22 MARCH 1982
 ISSUED
 20 55 000
 REVISED

4250 CONNECTICUT AVENUE, N.W.
 OFFICE BUILDING AND RETAIL SPACE
 WASHINGTON, D.C.

DRAWING
2 (B) NORTH ELEVATION ORIGINAL
 SCALE 1/8" = 1'-0"
 SHEET NUMBER

ORIGINAL