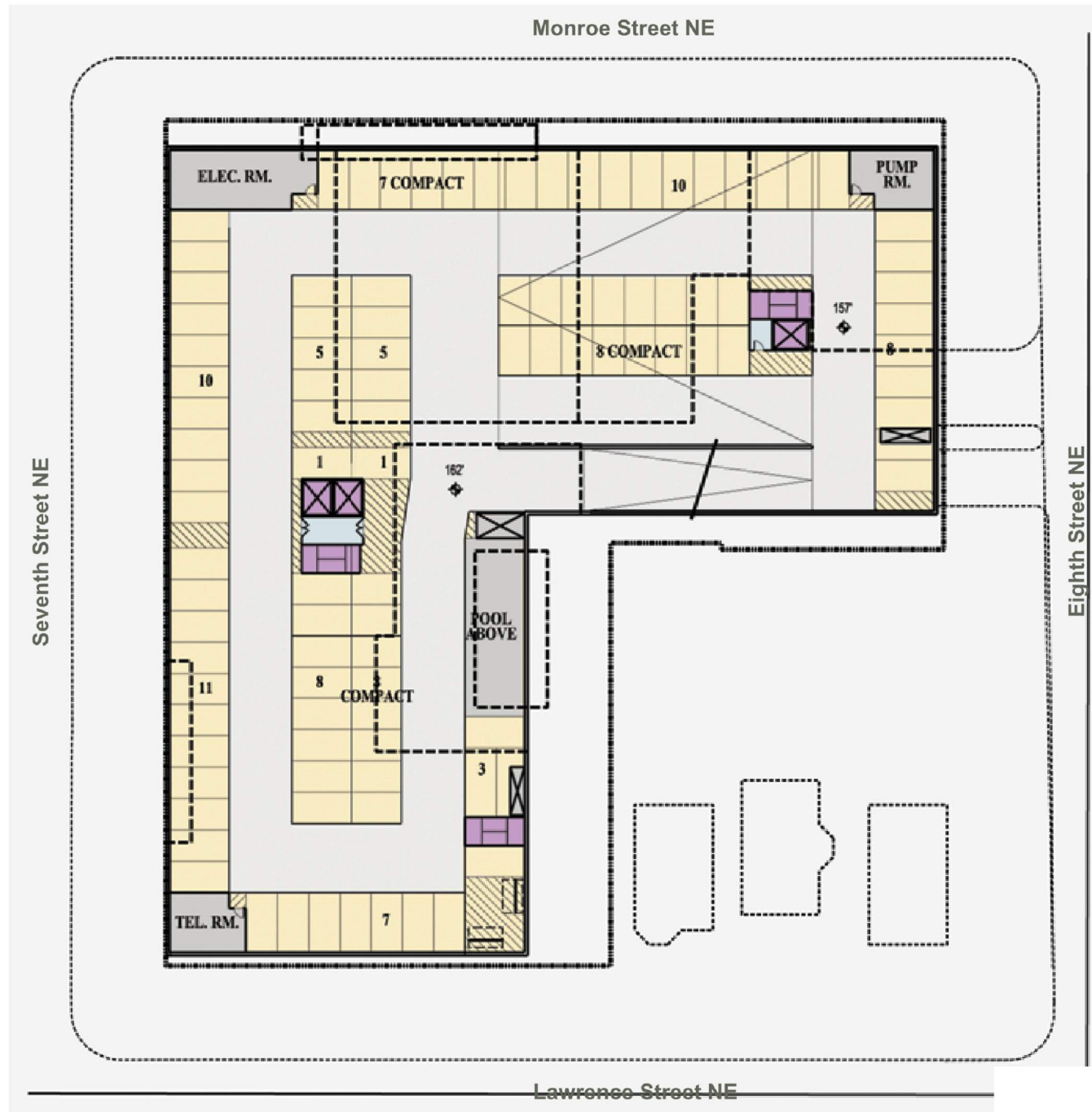


# ZC CASE NO. 08-24 - PROPOSED REVISIONS TO BLOCK E PUD MODIFICATION OF CONSEQUENCE - 12/18/17

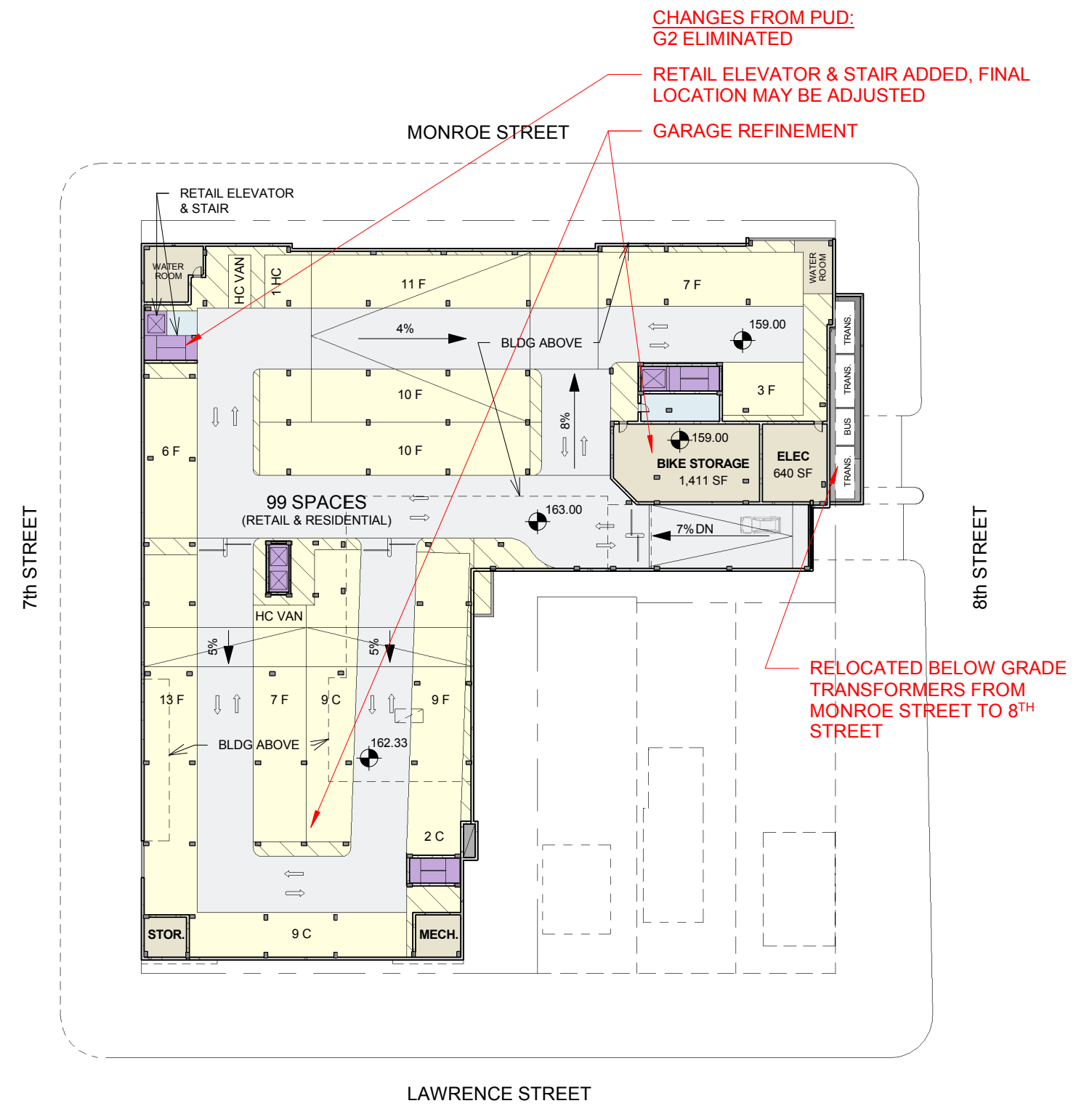


**TABLE OF CONTENTS  
PUD (11/30/2009) & REVISED COMPARISONS:**

GARAGE FLOOR PLAN	1A	BUILDING SECTIONS	7A	BAY STUDIES	9A
1ST FLOOR	2A	BUILDING SECTIONS	7B	BAY STUDIES	9B
MEZZANINE PLAN	3A	ELEVATIONS	8A	FAR PLANS	10A
SECOND / THIRD FLOOR PLANS	4A	ELEVATIONS	8B	FAR PLANS	10B
FOURTH -SIXTH FLOOR PLANS	5A	ELEVATIONS	8C	TABULATIONS	11A
ROOF PLAN	6A	ELEVATIONS	8D		



PUD - November 30, 2009 by Torti Gallas and Partners



PROPOSED

Floor Plan - Garage

CUA South Campus - Block E

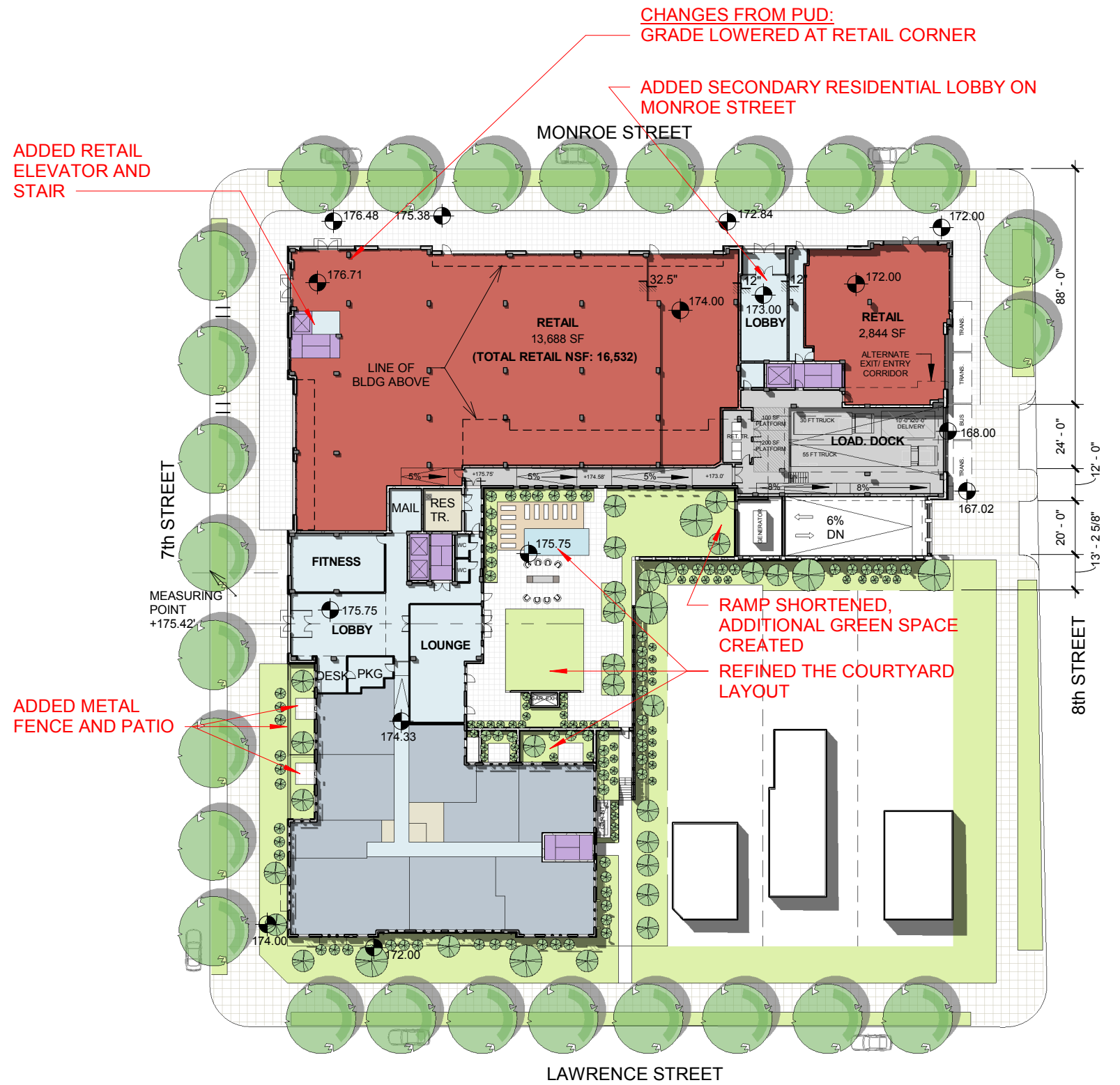
Monroe Street Block E Residential, LLC



mauricewalters | architect



PUD - November 30, 2009 by Torti Gallas and Partners



PROPOSED

NOTE: THE INTERIOR LAYOUTS SHOWN ON THE BUILDING PLANS ARE SCHEMATIC. CHANGES TO THE LAYOUTS, NOT AFFECTING THE EXTERIOR ENVELOPE OR THE SQUARE FOOTAGE DISTRIBUTION, MAY OCCUR.

## Floor Plans - Ground Floor

# CUA South Campus - Block E

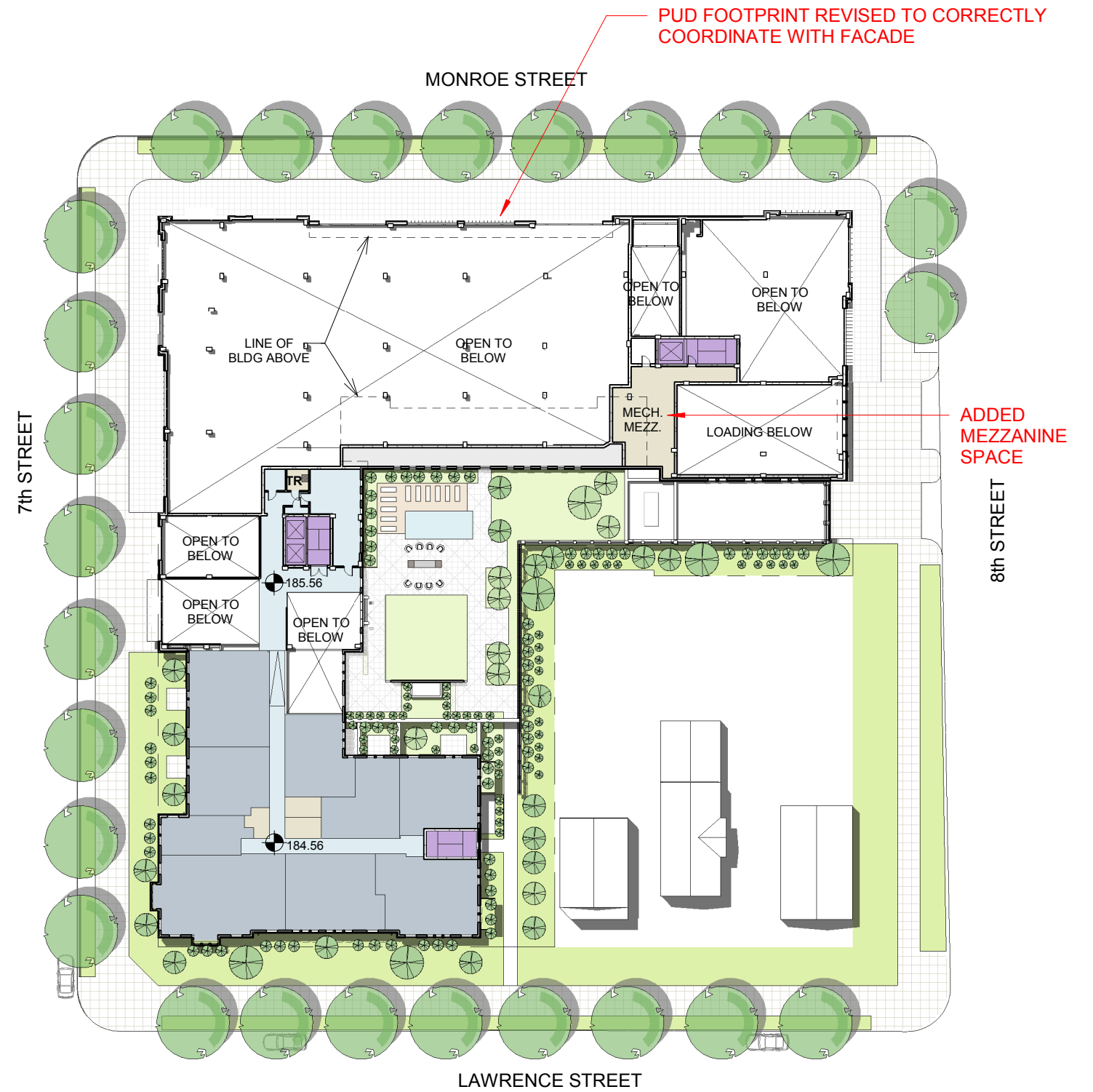
## Monroe Street Block E Residential, LLC



mauricewalters | architect



PUD - November 30, 2009 by Torti Gallas and Partners



PROPOSED

Floor Plans - Mezzanine

CUA South Campus - Block E

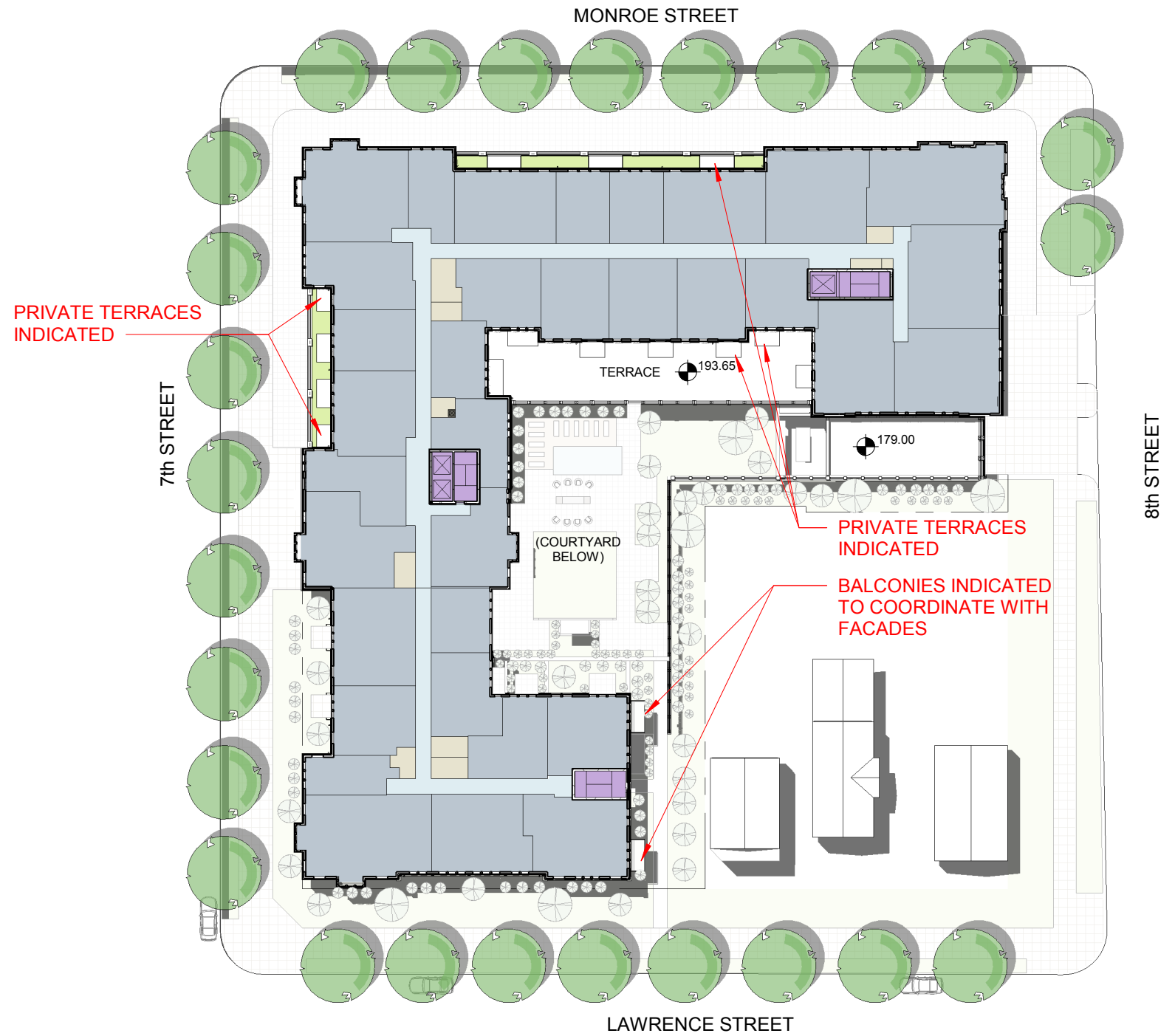
Monroe Street Block E Residential, LLC



mauricewalters | architect



PUD - November 30, 2009 by Torti Gallas and Partners



PROPOSED

Floor Plans - Second & Third

CUA South Campus - Block E

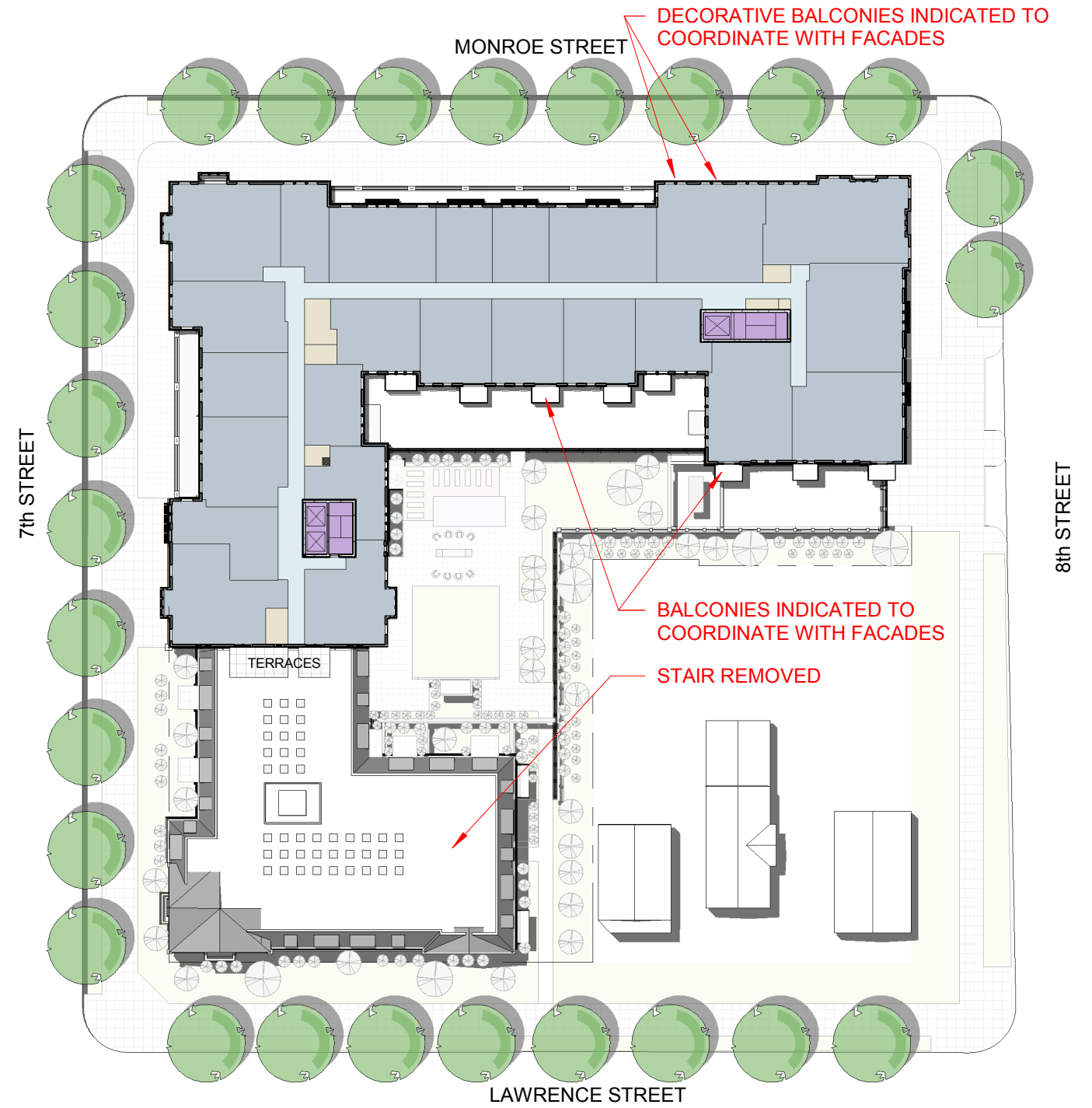
Monroe Street Block E Residential, LLC



mauricewalters | architect



PUD - November 30, 2009 by Torti Gallas and Partners



PROPOSED

Floor Plans - Fourth, Fifth & Sixth

CUA South Campus - Block E

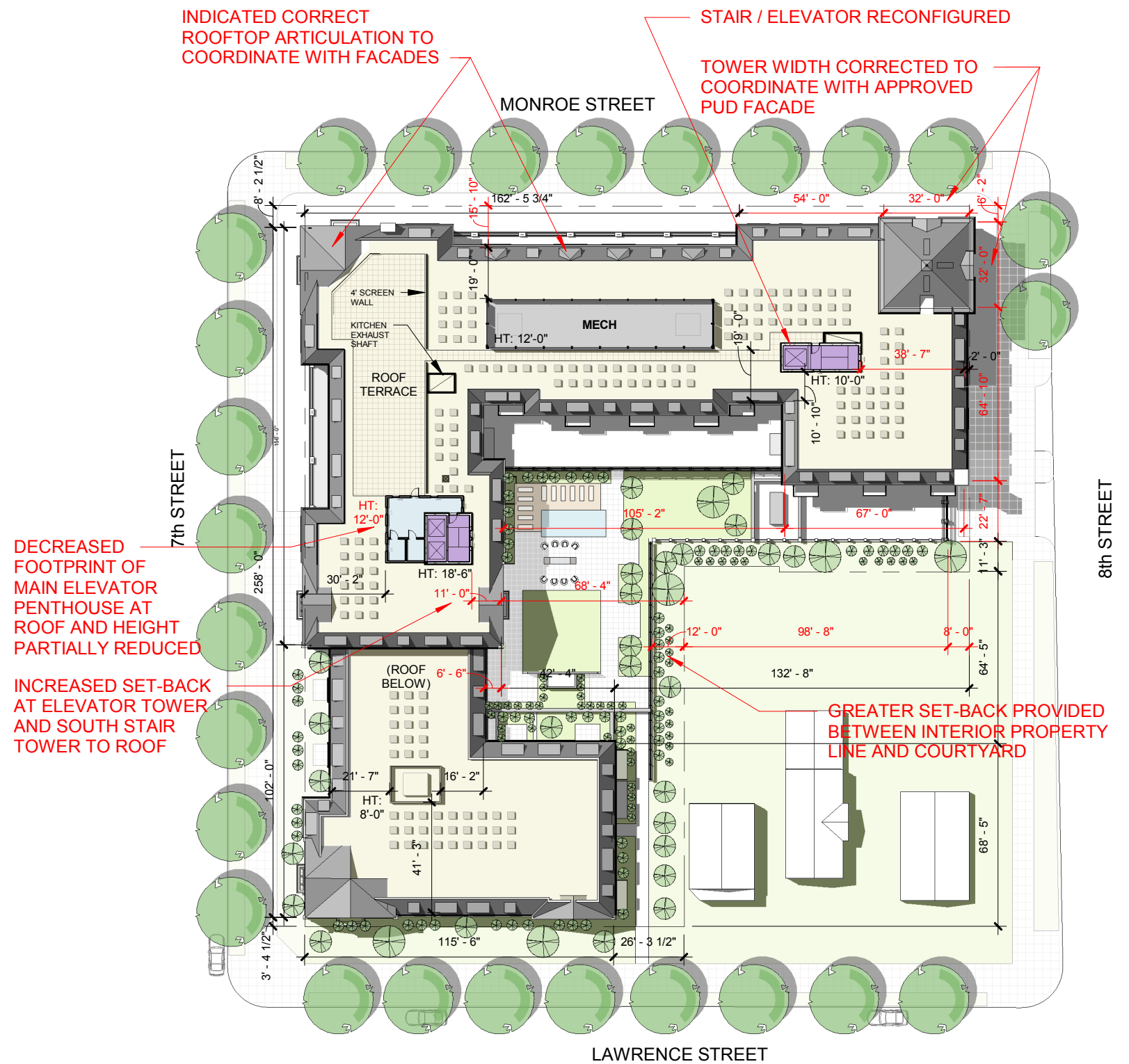
Monroe Street Block E Residential, LLC



mauricewalters | architect



PUD - November 30, 2009 by Torti Gallas and Partners



PROPOSED

Roof Plan

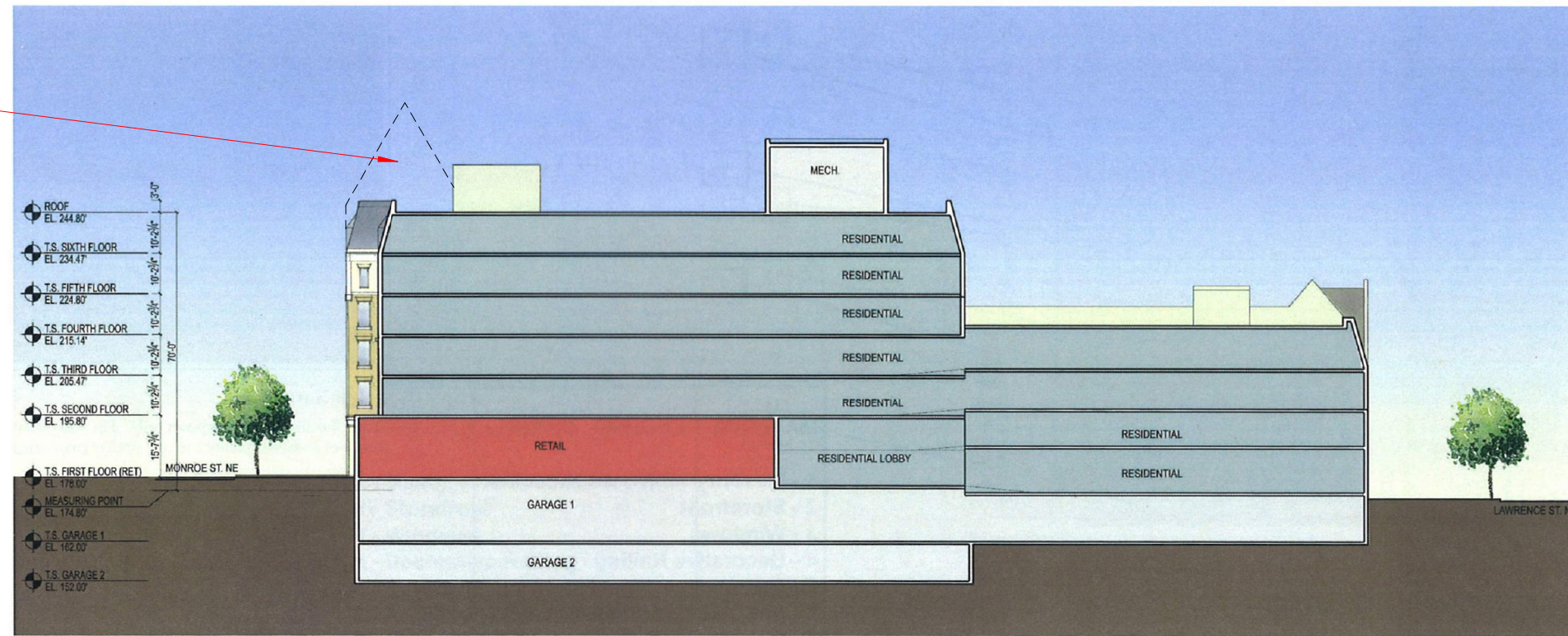
CUA South Campus - Block E

Monroe Street Block E Residential, LLC



mauricewalters | architect

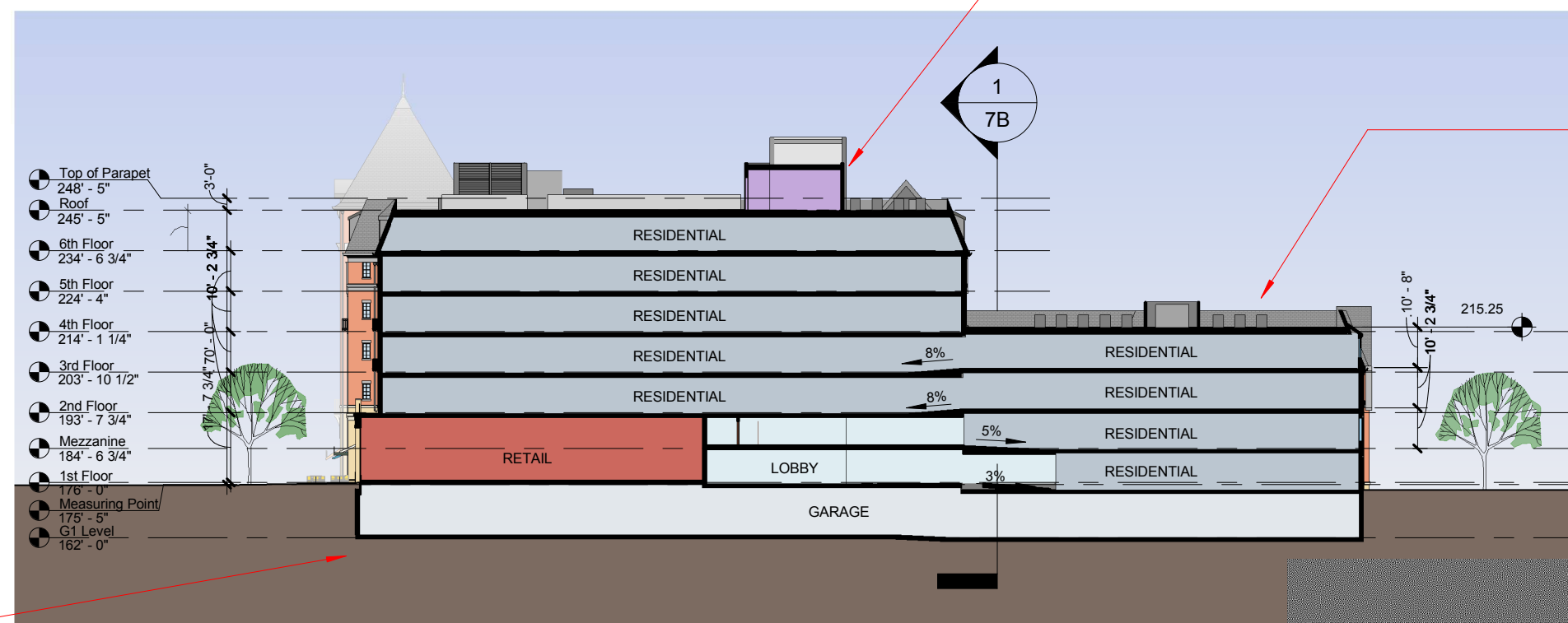
PUD DID NOT SHOW TOWER BEYOND BEYOND



SECTION B-B (NORTH-SOUTH) - PUD  
 PUD - November 30, 2009 by Torti Gallas and Partners

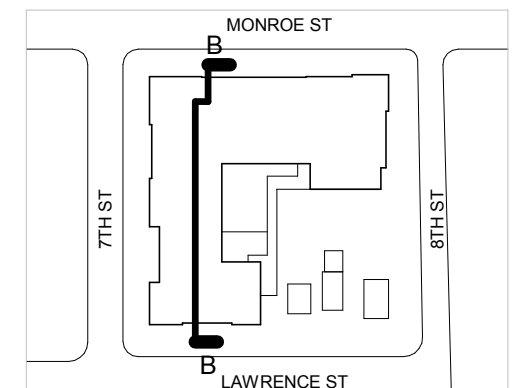
DECREASED FOOTPRINT OF MAIN ELEVATOR PENTHOUSE AT ROOF AND HEIGHT PARTIALLY REDUCED

STAIR REMOVED



SECTION B-B (NORTH-SOUTH) - PROPOSED  
 PROPOSED

G2 ELIMINATED



## Building Sections

# CUA South Campus - Block E

Monroe Street Block E Residential, LLC

mauricewalters | architect





SECTION A-A (EAST-WEST) - PUD  
PUD - November 30, 2009 by Torti Gallas and Partners

DECREASED FOOTPRINT OF  
 MAIN ELEVATOR PENTHOUSE  
 AT ROOF AND HEIGHT  
 PARTIALLY REDUCED

INDICATED CORRECT  
 ROOFTOP ARTICULATION TO  
 COORDINATE WITH FACADES

REMOVED WINDOWS  
 IN FIREWALL

G2 ELIMINATED

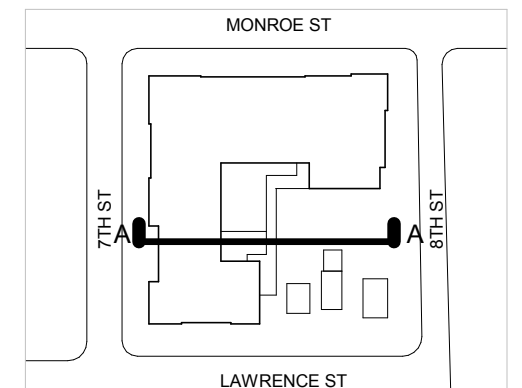


SECTION A-A (EAST-WEST)  
PROPOSED

REFINED WINDOW, DORMER AND  
 BALCONY CONFIGURATIONS TO  
 COORDINATE WITH INTERNAL  
 DWELLING UNIT CONFIGURATIONS

CLERESTORY WINDOWS ADDED  
 AT LOADING DOCK

WINDOWS & LOUVERS ADDED  
 AT SERVICE CORRIDOR  
 FACING COURTYARD



## Building Sections

# CUA South Campus - Block E

Monroe Street Block E Residential, LLC

mauricewalters | architect