

STREET TREE SCHEDULE

Canopy trees

BOTANICAL NAME	KEY	QTY	COMMON NAME	SIZE	COND.	COMMENTS
Betula nigra 'Heritage'	BN	2	River Birch	3" cal.	B&B	Single Stem, Full
Quercus phellos	QP	3	Willow Oak	3" cal.	B&B	Single Leader, Full
Tilia cordata	TC	1	Littleleaf Linden	3" cal.	B&B	Single Leader, Full

Understory trees (located under overhead wires)

Syringa reticulata	SR	4	Tree Lilac	2.5" cal.	B&B	Single Leader, Full
--------------------	----	---	------------	-----------	-----	---------------------

PARK SCHEDULE

BOTANICAL NAME	KEY	QTY	COMMON NAME	SIZE	COND.	COMMENTS
----------------	-----	-----	-------------	------	-------	----------

Trees

Cornus florida 'Cloud Nine'	CF	3	White Flowering Dogwood	8'-10'	B & B	Full branching
Magnolia virginiana	MV	2	Sweetbay Magnolia	8'-10'	B & B	Full branching, Multi-stem

Shrubs

Abelia x grandiflora 'Rose Creek'	AG		Rose Creek Abelia	18"-21"	Cont.	Full branching
Buxus 'Winter Gem'	BWG		Winter Gem Boxwood	30"	Cont.	Full branching
Hydrangea grandiflora 'Limelight'	HG		Limelight Hydrangea	30"-36"	Cont.	Full branching
Ilex virginica 'Henry's Garnet'	IVHG		Virginia Sweetspire	18"-24"	Cont.	Full branching
Prunus laurocerasus 'Schipkaensis'	PLS		Schip Laurel	36"	Cont.	Full branching, Upright
Viburnum plicatum 'Shasta'	VP		Doublefile Viburnum	36"	B & B	Full branching

Groundcovers/Perennials

Dryopteris marginalis	DM		Evergreen Wood Fern	1 gal.	Cont.	18" OC
Hosta sieboldiana 'Frances Williams'	HTW		Frances Williams Hosta	1 gal.	Cont.	30" OC
Hosta x 'Gold Standard'	HGS		Gold Standard Hosta	1 gal.	Cont.	20" OC
Pachysandra terminalis	PT		Pachysandra	2 1/4" PP	Cont.	5" OC

RAIN GARDEN SCHEDULE

BOTANICAL NAME	KEY	QTY	COMMON NAME	SIZE	COND.	COMMENTS
----------------	-----	-----	-------------	------	-------	----------

Trees

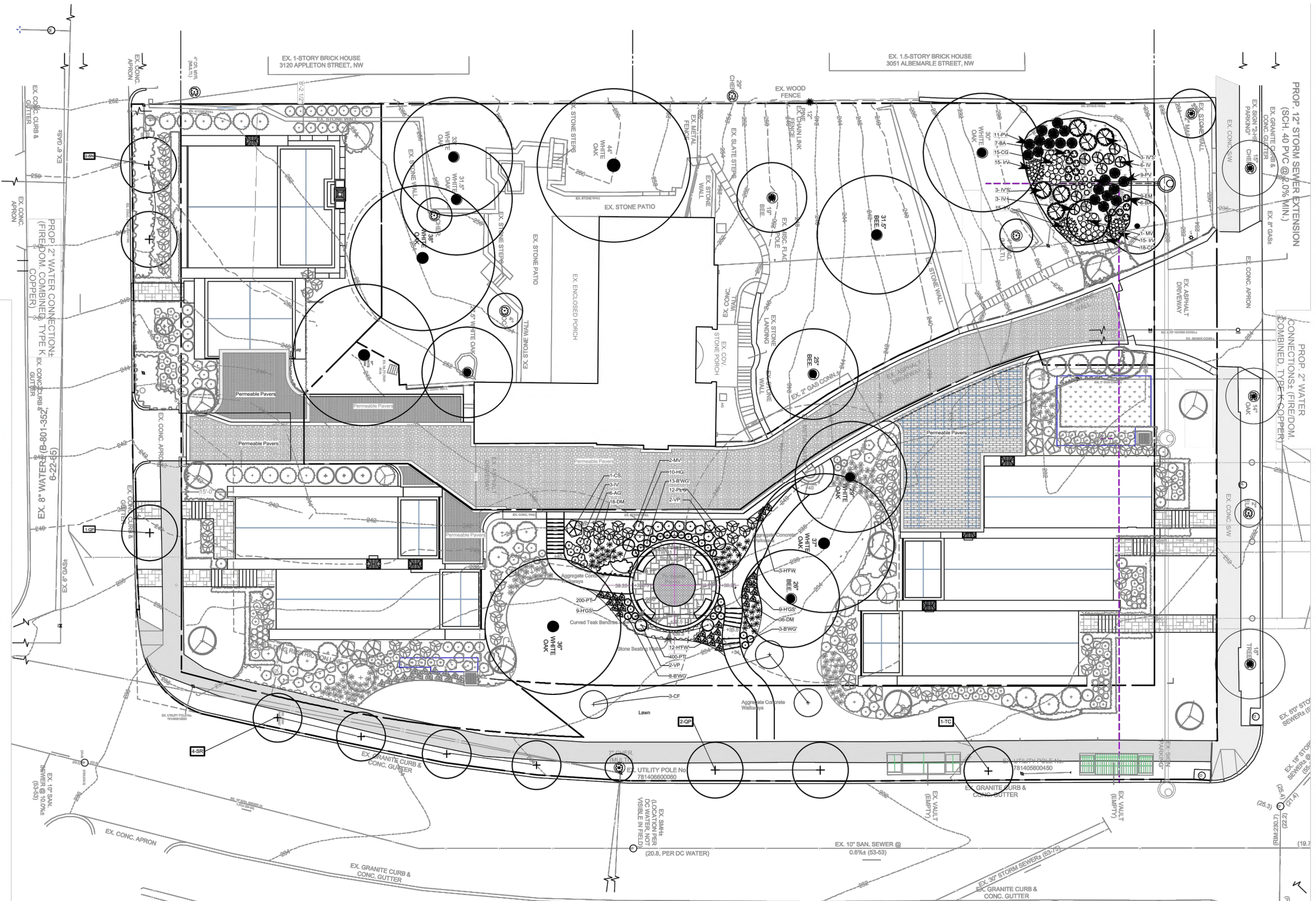
Magnolia virginiana	MV	2	Sweetbay Magnolia	8'-10'	B & B	Full branching, Multi-stem
---------------------	----	---	-------------------	--------	-------	----------------------------

Shrubs

Ilex verticillata 'Sparkleberry'	IVS		Winterberry	30"-36"	Cont.	Full branching
Ilex virginica 'Henry's Garnet'	IVHG		Virginia Sweetspire	18"-24"	Cont.	Full branching

Grasses/Perennials

Baptisia australis	BA		False Indigo	1 gal.	Cont.	24" OC
Chelone glabra	CG		Turtlehead	1 gal.	Cont.	18" OC
Eupatorium maculatum	EM		JoePyee Weed	1 gal.	Cont.	20" OC
Iris virginica	IV		Blue Flag Iris	1 gal.	Cont.	18" OC
Panicum virgatum	PV		Switchgrass	1-2 gal.	Cont.	30" OC



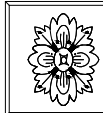
SOAPSTONE
VALLEY
VENTURES

CHRISTIAN ZAPATKA
ARCHITECT, PLLC

1656 33rd STREET NW
WASHINGTON DC 20007
202 333 2735



CAS Engineering-DC, LLC
Attn: David C. Landsman, PE, Prof. LS
1001 Connecticut Avenue, NW, Suite 401
Washington, DC 20036
(202) 393-7200 phone
david@cas-dc.com



DCA Landscape Architects, Inc.
1315 Wisconsin Avenue, NW
Washington, D.C. 20007
202/337-1160 (tel.) 202/337-4630 (fax)

3101 ALBEMARLE STREET NW
WASHINGTON, DC 20008
SQUARE: 2041 LOTS: 22, 23

SUBMISSION:	DRAWING TITLE:	PAGE NUMBER:
DATE: NOVEMBER 17, 2017	SITE PLANTING PLAN: PARK, STREET TREES, AND RAIN GARDEN	L001
ZONING COMMISSION District of Columbia		
CASE NO. 17-22 SCALE: 1/16" = 1'-0"		
EXHIBIT NO. 215		

SINGLE FAMILY RESIDENCE SCHEDULE

Trees					
BOTANICAL NAME	KEY	QTY	COMMON NAME	SIZE	COND. COMMENTS
<i>Carpinus betulus</i> 'Fastigiata'	CB		Fastigiata Hornbeams	2.5" cal.	B&B Single leader, limbed up at 3'
<i>Cornus kousa</i>	CK		Chinese Dogwood	8"	B&B Multi-stem
<i>Magnolia grandiflora</i>	MG		Southern Magnolia	10'-12"	B&B Single Leader, Full
<i>Magnolia grandiflora</i>	MG		Southern Magnolia- Espalier	14"	B&B Single Leader, Full
<i>Thuja occidentalis</i> 'Smaragd'	TO		Emerald Green Arborvitae	10'-12"	B&B Single Leader, Full
<i>Thuja plicata</i> 'Green Giant'	TGG		Green Giant Arborvitae	10'-12"	B&B Single Leader, Full

Shrubs					
<i>Abelia x grandiflora</i> 'Rose Creek'	AG		Rose Creek Abelia	18"-21"	Cont. Full branching
<i>Buxus</i> 'Winter Gem'	BWG		Winter Gem Boxwood	30"	Cont. Full branching
<i>Hydrangea macrophylla</i>	HM		Blue Mophead Hydrangea	24"-30"	Cont. Full branching
<i>Hydrangea grandiflora</i> 'Limelight'	HG		Limelight Hydrangea	30"-36"	Cont. Full branching
<i>Ilex virginica</i> 'Henry's Garnet'	IVHG		Virginia Sweetpire	18"-24"	Cont. Full branching
<i>Prunus laurocerasus</i> 'Otto Layken'	PLOL		Otto Layken Laurel	30"	Cont. Full branching
<i>Prunus laurocerasus</i> 'Schipkaensis'	PLS		Schip Laurel	36"	Cont. Full branching
<i>Viburnum plicatum</i> 'Shasta'	VP		Doubleleaf Viburnum	36"	Cont. Full branching

Groundcovers/Perennials					
<i>Liriope muscari</i> 'Royal Purple'	LM		Liriope	4" pots	12" OC
<i>Pachysandra terminalis</i>	PT		Pachysandra	2 1/4" PP	5" OC

11/3/2017, Page 1

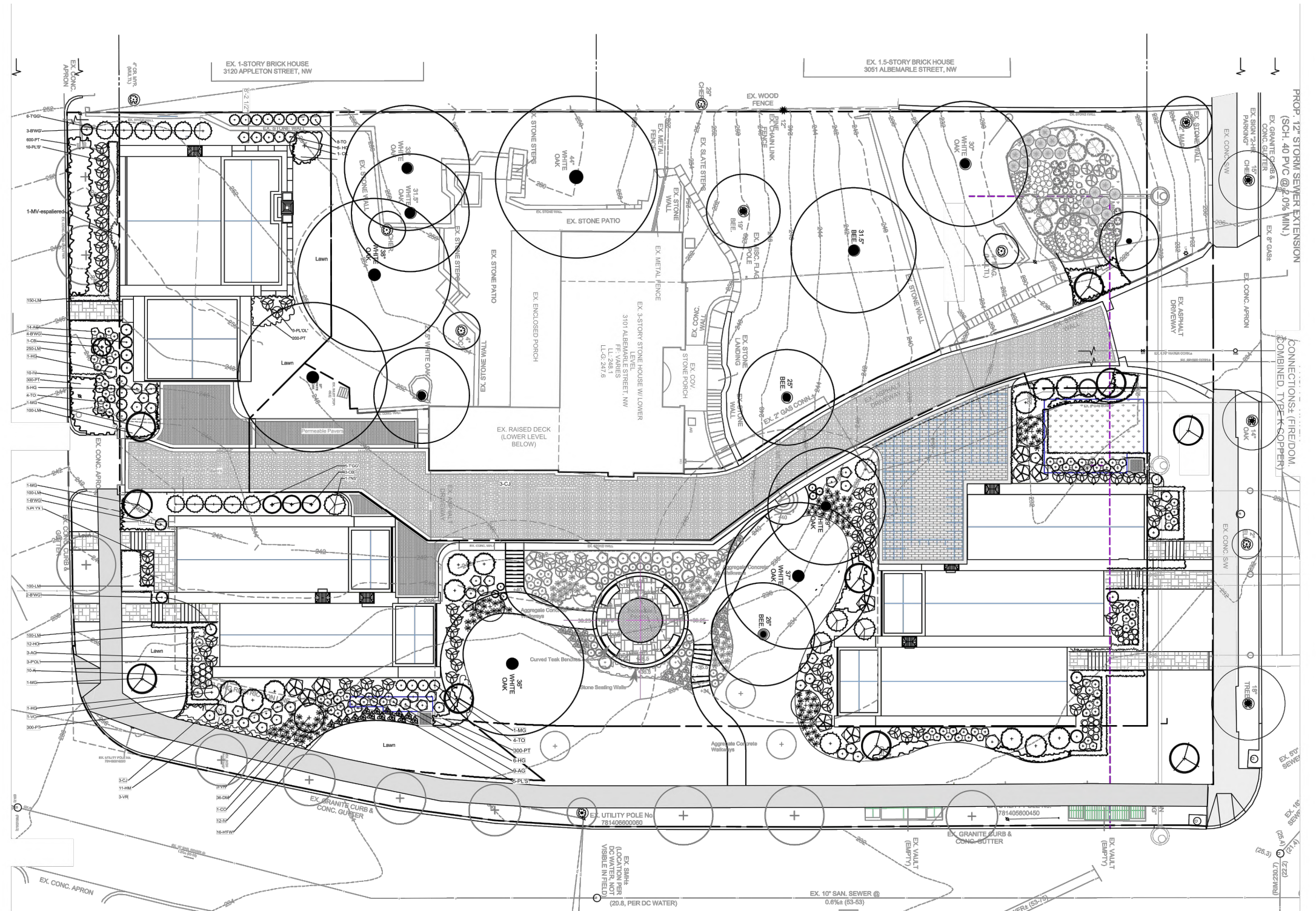
TOWNHOUSE SCHEDULE

Trees					
BOTANICAL NAME	KEY	QTY	COMMON NAME	SIZE	COND. COMMENTS
<i>Carpinus betulus</i> 'Fastigiata'	CB		Fastigiata Hornbeams	2.5" cal.	B&B Single leader, limbed up at 3'
<i>Cryptomeria japonica</i>	CJ		Cryptomeria	12"	B&B Single Leader, Full
<i>Ilex x 'Nellie Stevens'</i>	INS		Nellie Stevens Holly	10'-12"	B&B Single Leader, Full
<i>Magnolia grandiflora</i>	MG		Southern Magnolia	10'-12"	B&B Single Leader, Full
<i>Magnolia virginiana</i>	MV		Sweetbay Magnolia	10'-12"	B&B Multi-stem, Full
<i>Thuja plicata</i> 'Green Giant'	TGG		Green Giant Arborvitae	10'-12"	B&B Single Leader, Full
<i>Thuja occidentalis</i> 'Smaragd'	TO		Emerald Green Arborvitae	10'-12"	B&B Single Leader, Full

Shrubs					
<i>Abelia x grandiflora</i> 'Rose Creek'	AG		Rose Creek Abelia	18"-21"	Cont. Full branching
<i>Azalea-Encore</i> variety	A		Reblooming Azalea	18"-21"	Cont. Full branching
<i>Buxus</i> 'Winter Gem'	BWG		Winter Gem Boxwood	30"	Cont. Full branching
<i>Camellia sasanqua</i>	CS		Camellia	36"	Cont. Full branching
<i>Hydrangea macrophylla</i>	HM		Blue Mophead Hydrangea	24"-30"	Cont. Full branching
<i>Hydrangea grandiflora</i> 'Limelight'	HG		Limelight Hydrangea	30"-36"	Cont. Full branching
<i>Ilex verticillata</i> 'Sparkberry'	IVS		Winterberry	36"	Cont. Full branching
<i>Ilex virginica</i> 'Henry's Garnet'	IVHG		Virginia Sweetpire	18"-24"	Cont. Full branching
<i>Prunus laurocerasus</i> 'Otto Layken'	PLOL		Otto Layken Laurel	30"	Cont. Full branching
<i>Prunus laurocerasus</i> 'Schipkaensis'	PLS		Schip Laurel	36"	Cont. Full branching
<i>Viburnum carlesii</i>	VC		Koreanopice Viburnum	36"	Cont. Full branching
<i>Viburnum thymidophyllum</i>	VR		Leatherleaf Viburnum	36"	Cont. Full branching

Groundcovers/Perennials					
-------------------------	--	--	--	--	--

11/3/2017, Page 1



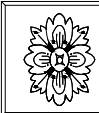
SOAPSTONE VALLEY VENTURES

CHRISTIAN ZAPATKA ARCHITECT, PLLC

1656 33rd STREET NW WASHINGTON DC 20007 202 333 2735



CAS Engineering-DC, LLC Attn: David C. Landsman, PE, Prof. LS 1001 Connecticut Avenue, NW, Suite 401 Washington, DC 20036 (202) 393-7200 phone david@cas-dc.com



DCA Landscape Architects, Inc. 1315 Wisconsin Avenue, NW Washington, D.C. 20007 202/337-1160 (tel.) 202/337-4630 (fax)

3101 ALBEMARLE STREET NW WASHINGTON, DC 20008 SQUARE: 2041 LOTS: 22, 23

SUBMISSION:	DRAWING TITLE:	PAGE NUMBER:
	SITE PLANTING PLAN: TOWNHOUSES AND SINGLE FAMILY RESIDENCES	L002

DATE: NOVEMBER 17, 2017

SCALE: 1/16" = 1'-0"