



LEED 2009 for New Construction and Major Renovations

Project Checklist

Randall School- Residential

November 12, 2013 - Revised PUD Submission

16 7 3 Sustainable Sites Possible Points: 26

Y	?	N			
Y			Prereq 1	Construction Activity Pollution Prevention	
1			Credit 1	Site Selection	1
5			Credit 2	Development Density and Community Connectivity	5
		1	Credit 3	Brownfield Redevelopment	1
6			Credit 4.1	Alternative Transportation—Public Transportation Access	6
1			Credit 4.2	Alternative Transportation—Bicycle Storage and Changing Rooms	1
	3		Credit 4.3	Alternative Transportation—Low-Emitting and Fuel-Efficient Vehicles	3
2			Credit 4.4	Alternative Transportation—Parking Capacity	2
		1	Credit 5.1	Site Development—Protect or Restore Habitat	1
		1	Credit 5.2	Site Development—Maximize Open Space	1
	1		Credit 6.1	Stormwater Design—Quantity Control	1
1			Credit 6.2	Stormwater Design—Quality Control	1
	1		Credit 7.1	Heat Island Effect—Non-roof	1
	1		Credit 7.2	Heat Island Effect—Roof	1
	1		Credit 8	Light Pollution Reduction	1

4 5 1 Water Efficiency Possible Points: 10

Y	?	N			
Y			Prereq 1	Water Use Reduction—20% Reduction	
2	2		Credit 1	Water Efficient Landscaping	2 to 4
	2		Credit 2	Innovative Wastewater Technologies	2
2	1	1	Credit 3	Water Use Reduction	2 to 4

12 14 9 Energy and Atmosphere Possible Points: 35

Y	?	N			
Y			Prereq 1	Fundamental Commissioning of Building Energy Systems	
Y			Prereq 2	Minimum Energy Performance	
Y			Prereq 3	Fundamental Refrigerant Management	
7	12		Credit 1	Optimize Energy Performance	1 to 19
	7		Credit 2	On-Site Renewable Energy	1 to 7
2			Credit 3	Enhanced Commissioning	2
	2		Credit 4	Enhanced Refrigerant Management	2
3			Credit 5	Measurement and Verification	3
	2		Credit 6	Green Power	2

5 5 4 Materials and Resources Possible Points: 14

Y	?	N			
Y			Prereq 1	Storage and Collection of Recyclables	
		3	Credit 1.1	Building Reuse—Maintain Existing Walls, Floors, and Roof	1 to 3
		1	Credit 1.2	Building Reuse—Maintain 50% of Interior Non-Structural Elements	1
2			Credit 2	Construction Waste Management	1 to 2
1	1		Credit 3	Materials Reuse	1 to 2

Materials and Resources, Continued

Y	?	N			
1	1		Credit 4	Recycled Content	1 to 2
1	1		Credit 5	Regional Materials	1 to 2
	1		Credit 6	Rapidly Renewable Materials	1
	1		Credit 7	Certified Wood	1

10 5 Indoor Environmental Quality Possible Points: 15

Y	?	N			
Y			Prereq 1	Minimum Indoor Air Quality Performance	
Y			Prereq 2	Environmental Tobacco Smoke (ETS) Control	
1			Credit 1	Outdoor Air Delivery Monitoring	1
	1		Credit 2	Increased Ventilation	1
1			Credit 3.1	Construction IAQ Management Plan—During Construction	1
1			Credit 3.2	Construction IAQ Management Plan—Before Occupancy	1
1			Credit 4.1	Low-Emitting Materials—Adhesives and Sealants	1
1			Credit 4.2	Low-Emitting Materials—Paints and Coatings	1
1			Credit 4.3	Low-Emitting Materials—Flooring Systems	1
1	1		Credit 4.4	Low-Emitting Materials—Composite Wood and Agrifiber Products	1
1			Credit 5	Indoor Chemical and Pollutant Source Control	1
	1		Credit 6.1	Controllability of Systems—Lighting	1
	1		Credit 6.2	Controllability of Systems—Thermal Comfort	1
1			Credit 7.1	Thermal Comfort—Design	1
	1		Credit 7.2	Thermal Comfort—Verification	1
1			Credit 8.1	Daylight and Views—Daylight	1
1			Credit 8.2	Daylight and Views—Views	1

2 4 Innovation and Design Process Possible Points: 6


Y	?	N			
1			Credit 1.1	Innovation in Design: Transportation Management Plan	1
		1	Credit 1.2	Innovation in Design: Specific Title	1
		1	Credit 1.3	Innovation in Design: Specific Title	1
		1	Credit 1.4	Innovation in Design: Specific Title	1
		1	Credit 1.5	Innovation in Design: Specific Title	1
1			Credit 2	LEED Accredited Professional	1


1 3 Regional Priority Credits Possible Points: 4

Y	?	N			
		1	Credit 1.1	Wec2 - receive added point if this credit is achieved	1
		1	Credit 1.2	Ssc5.1, Ssc6.1 - not possible	1
		1	Credit 1.3	EAc1, EAc2 - probably not possible	1
		1	Credit 1.4	MR1.1 - not possible - demolishing too much	1

49 37 24 Total Possible Points: 110

Certified 40 to 49 points Silver 50 to 59 points Gold 60 to 79 points Platinum 80 to 110


 Address:


 Other / BZA Order:

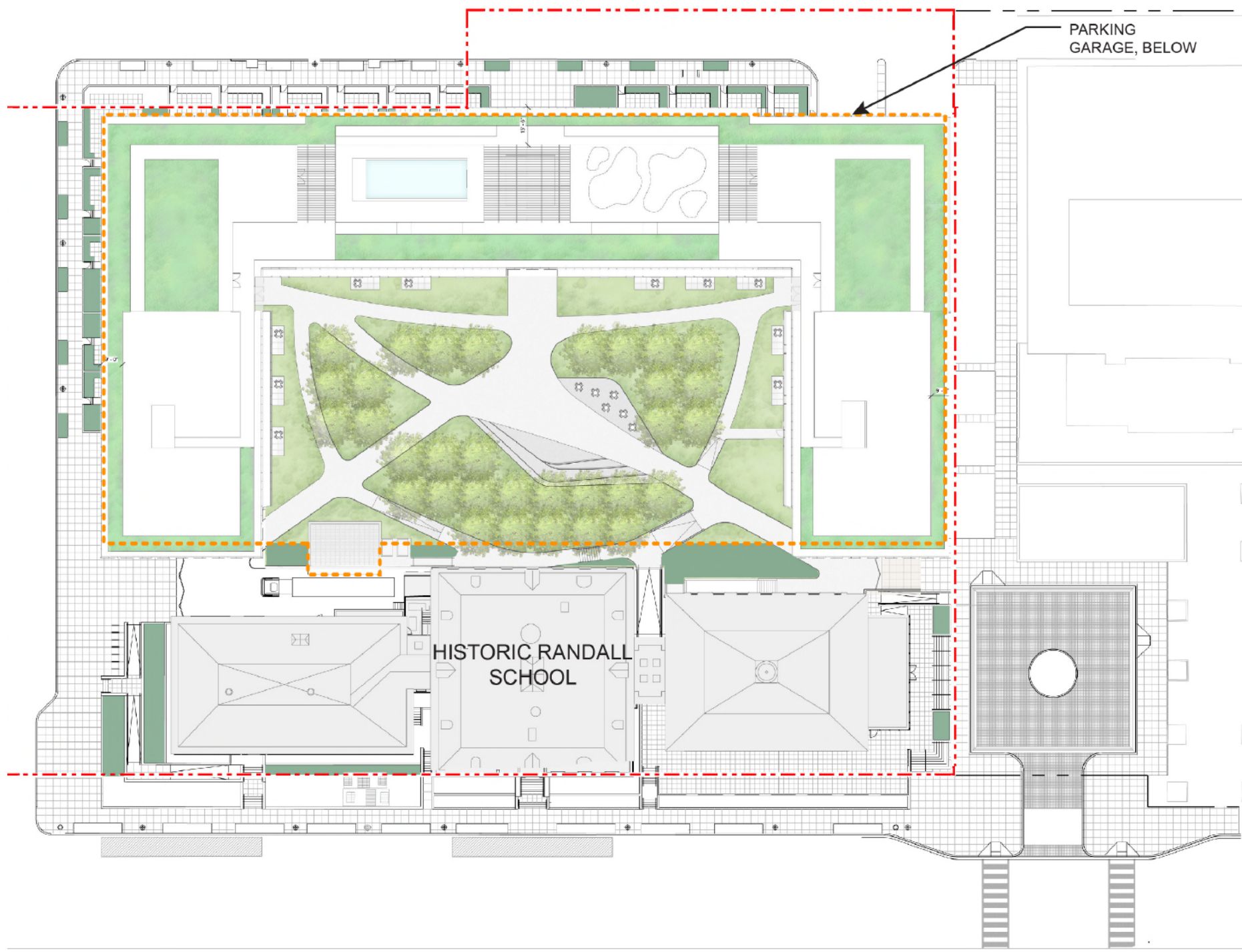
Green Area Ratio Scoresheet
 Ward: Lot: Zoning District:
 enter sq ft of lot: multiplier:
 Lot size (enter this value first) *

Landscape Elements	Square Feet	Factor	Total
A Landscaped areas (select one of the following for each area)			
1 Landscaped areas with a soil depth of less than 24"	<input type="text" value="enter sq ft"/>	0.3	-
2 Landscaped areas with a soil depth of 24" or greater	<input type="text" value="3,670"/>	0.6	2,202.1
3 Bioretention facilities	<input type="text" value="0"/>	0.4	-
B Plantings (credit for plants in landscaped areas from Section A)			
1 Groundcovers, or other plants less than 2' tall at maturity	<input type="text" value="10,839"/>	0.2	2,167.8
2 Plants, not including grasses, 2' or taller at maturity - calculated at 9 sq ft per plant (typically planted no closer than 18" on center)	<input type="text" value="1,968"/> 17712	0.3	5,313.6
3 Tree canopy for all new trees 2.5" to 6" in diameter or equivalent - calculated at 50 sq ft per tree	<input type="text" value="9"/> 450	0.5	225.0
4 Tree canopy for new trees 6" diameter or larger or equivalent - calculated at 250 sq ft per tree	<input type="text" value="0"/> 0	0.6	-
5 Tree canopy for preservation of existing tree 6" to 12" in diameter or larger or equivalent - calculated at 250 sq ft per tree	<input type="text" value="0"/> 0	0.7	-
6 Tree canopy for preservation of existing tree 12" to 18" in diameter or larger or equivalent - calculated at 600 sq ft per tree	<input type="text" value="0"/> 0	0.7	-
7 Tree canopy for preservation of all existing trees 18" to 24" in diameter or equivalent - calculated at 1300 sq ft per tree	<input type="text" value="0"/> 0	0.7	-
8 Tree canopy for preservation of all existing trees 24" in diameter or larger or equivalent - calculated at 2000 sq ft per tree	<input type="text" value="0"/> 0	0.8	-
9 Vegetated wall, plantings on a vertical surface	<input type="text" value="0"/>	0.6	-

C Vegetated or "green" roofs			
1 Over at least 2" and less than 8" of growth medium	<input type="text" value="10,839"/>	0.6	6,503.4
2 Over at least 8" of growth medium	<input type="text" value="14,045"/>	0.8	11,236.0
D Permeable Paving***			
1 Permeable paving over at least 6" and less than 24" of soil or gravel	<input type="text" value="0"/>	0.4	-
2 Permeable paving over at least 24" of soil or gravel	<input type="text" value="0"/>	0.5	-
E Other			
1 Enhanced tree growth systems***	<input type="text" value="0"/>	0.4	-
2 Renewable energy generation	<input type="text" value="0"/>	0.5	-
3 Approved water features	<input type="text" value="0"/>	0.2	-
sub-total of sq ft = 57,555			
H Bonuses			
1 Native plant species	<input type="text" value="17,715"/>	0.1	1,771.5
2 Landscaping in food cultivation	<input type="text" value="0"/>	0.1	-
3 Harvested stormwater irrigation	<input type="text" value="0"/>	0.1	-
Green Area Ratio numerator = 29,419			
*** Permeable paving and structural soil together may not qualify for more than one third of the Green Area Ratio score.			
Total square footage of all permeable paving and enhanced tree growth -			

DDOE/WPD 12/2013

GAR CALCULATIONS



LANDSCAPE ELEMENT	BASELINE	REQUIRED	TOTAL	UNIT
A2: SOIL DEPTH > 24"	3,670	-	3,670	SF
B1: PLANTINGS < 2' HT	10,839	-	10,839	SF
B2: PLANTINGS > 2' HT	1,968	-	1,968	PLANTS
B3: NEW TREES, 2.5" - 6" CAL (50 sf per tree)	9	-	9	TREES
C1: GREEN ROOF, 2"-8" GROWING MEDIUM DEPTH	10,839	-	10,839	SF
C2: GREEN ROOF, 8" + GROWING MEDIUM DEPTH	14,045	-	14,045	SF
H1: NATIVE PLANT BONUS	17,715	-	17,715	SF

GAR SCORE	0.254	0.254
------------------	--------------	--------------

- NOTES:**
- 1) B1 (GROUNDCOVERS) CALCULATED AT 75% COVERAGE OF C2 (GREEN ROOF)
 - 2) B2 (2' AND HIGHER PLANTINGS) CALCULATED AT 50% COVERAGE OF C2 (GREEN ROOF); SOME GROUNDCOVERS (B1) WILL BE UNDERPLANTED FOR B2
 - 3) H1 ASSUMES 50% NATIVE PLANT SPECIES FOR B1, B2, B3

LEGEND

- - - - - PROPERTY LINE
- GREEN ROOF OVER BUILDING
- COURTYARD PLANTING/
GREEN ROOF OVER PARKING GARAGE
- AT GRADE PLANTING