



**BEYER
BLINDER
BELLE**

SOUTHEAST CORNER VIEW
RANDALL SCHOOL | PUD Modification

ARCHITECTURAL A22
ZONING COMMISSION
District of Columbia
CASE NO.07-13G
EXHIBIT NO.2J4



NORTHWEST CORNER VIEW
RANDALL SCHOOL | PUD Modification

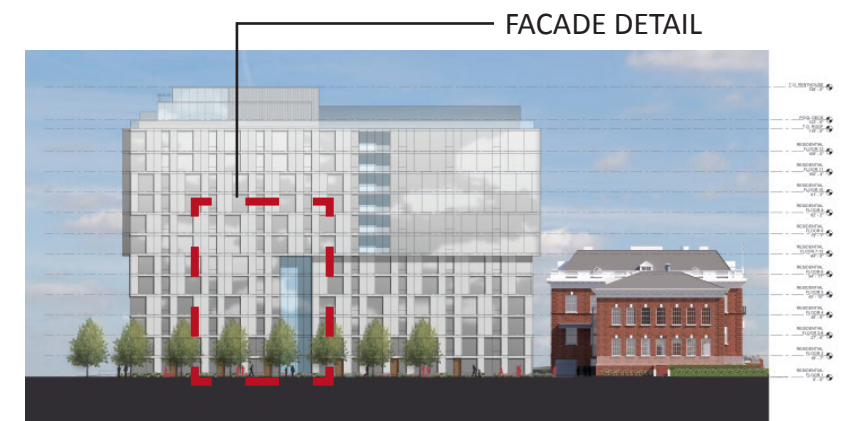
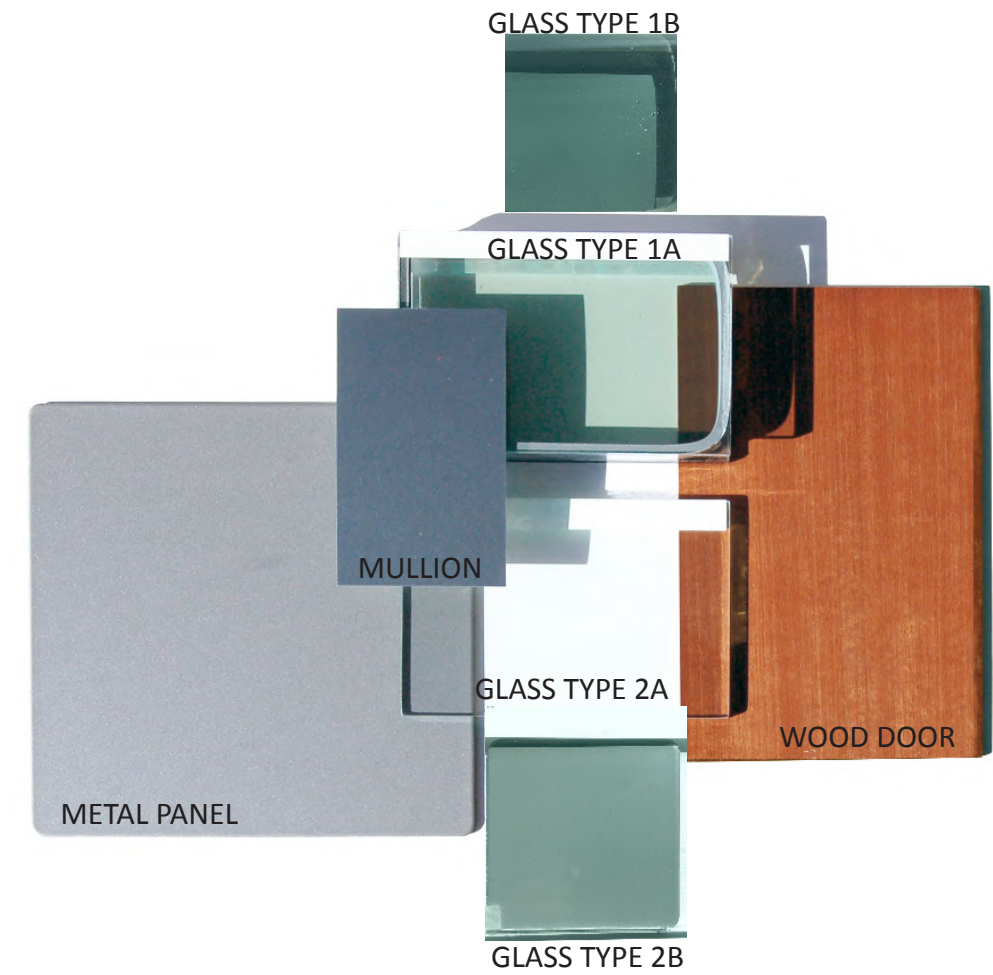
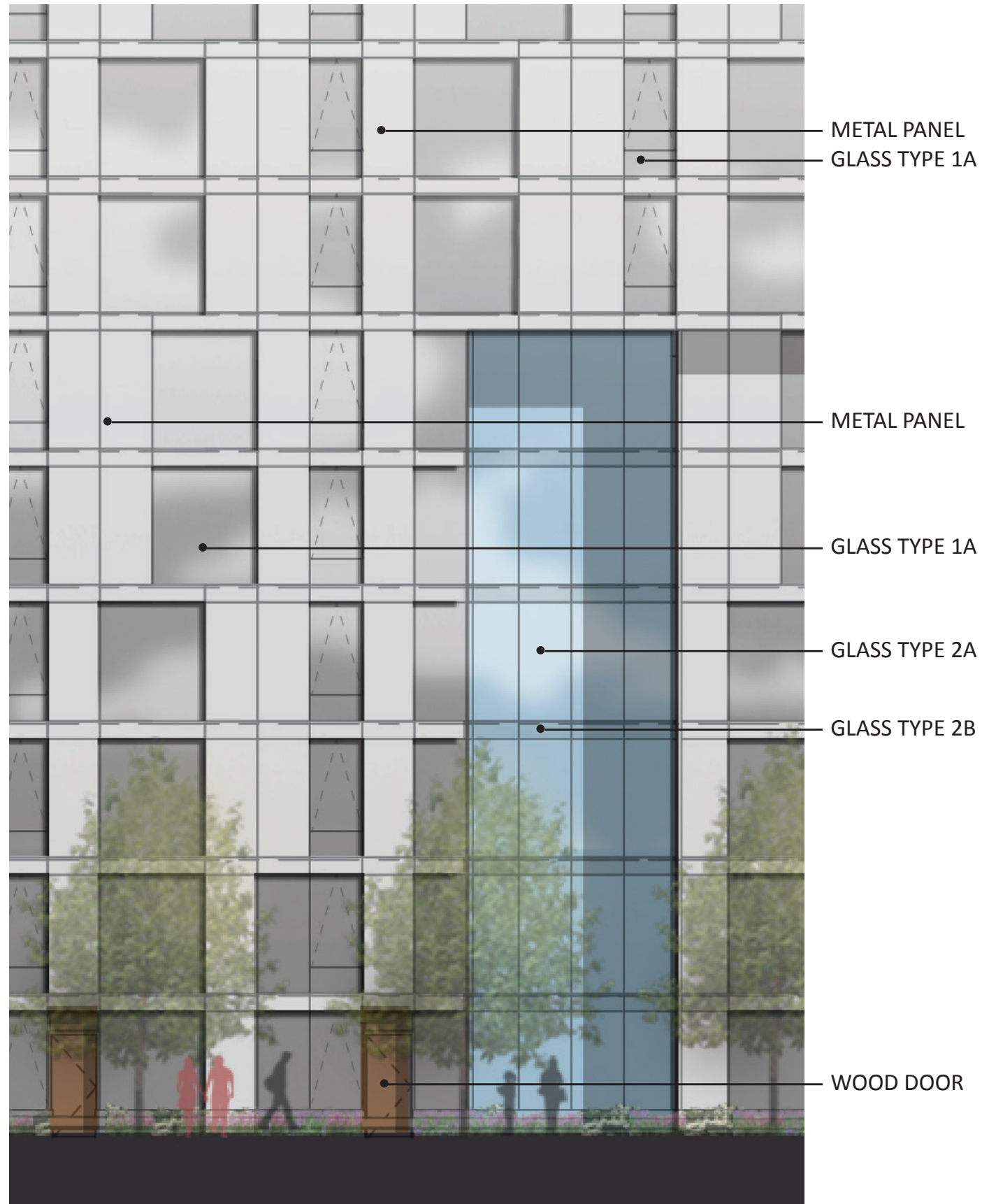


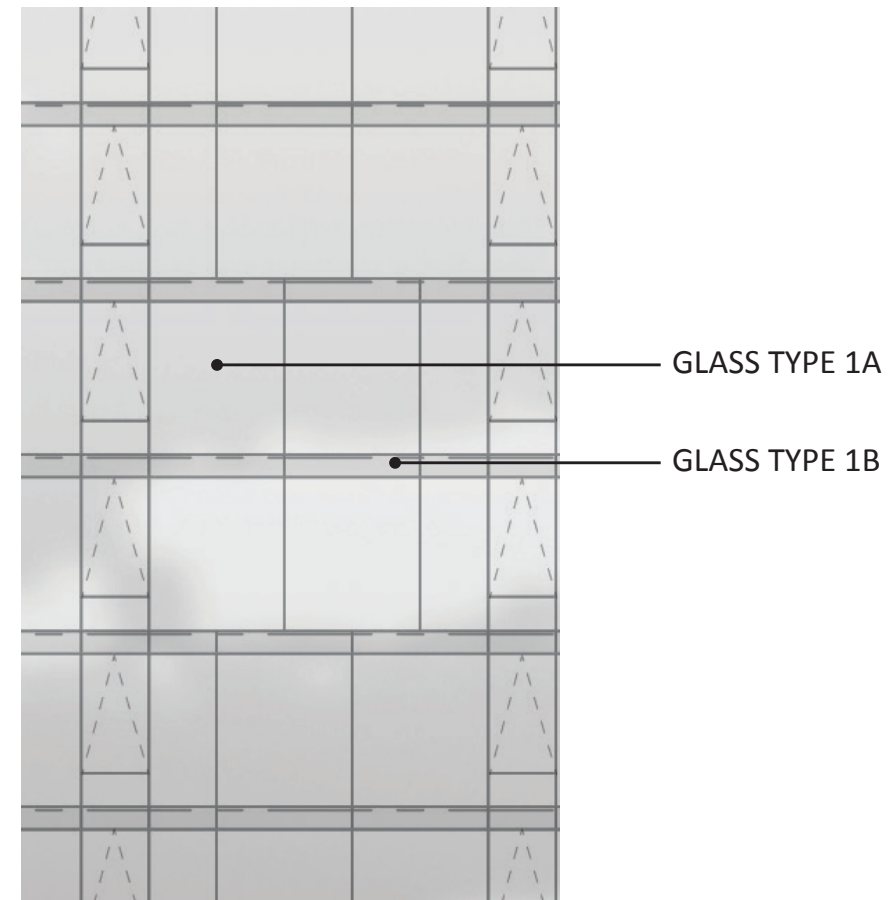
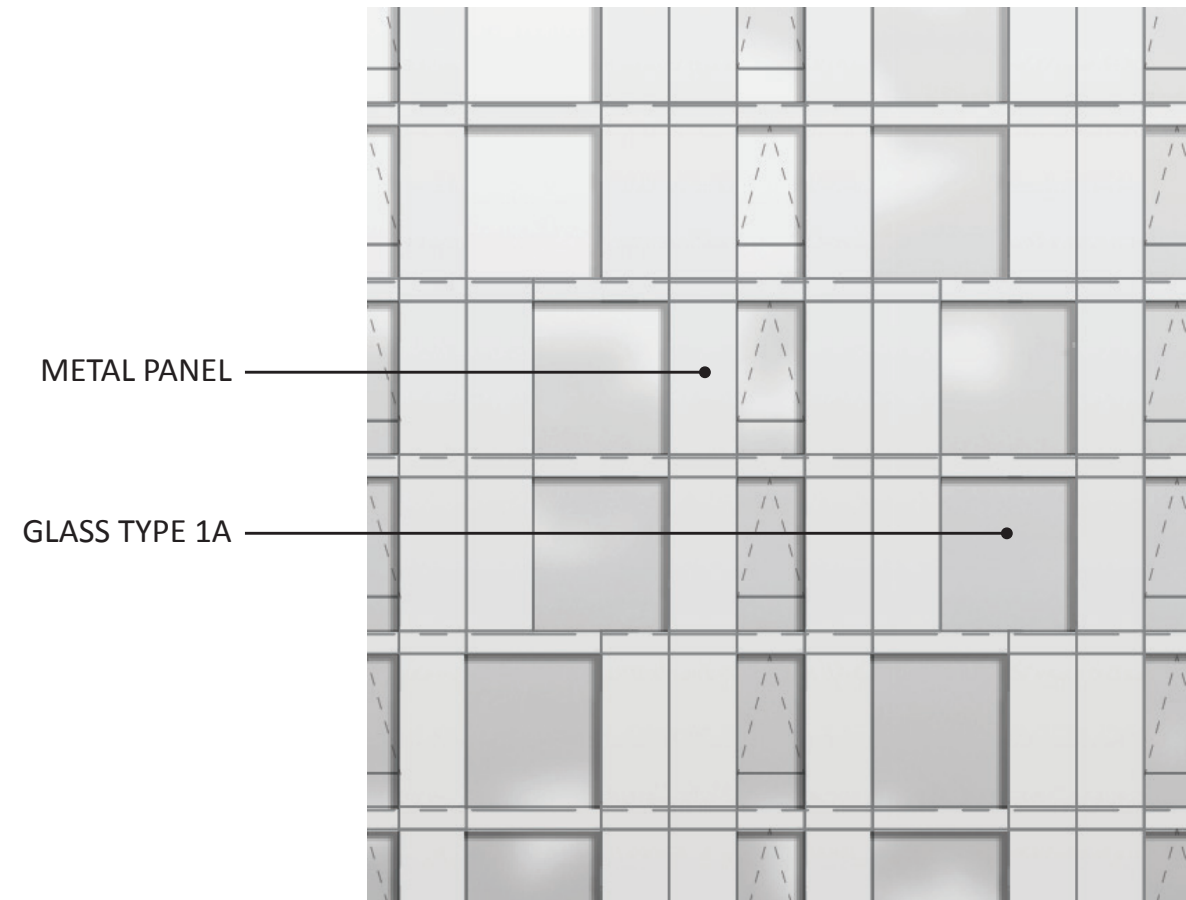
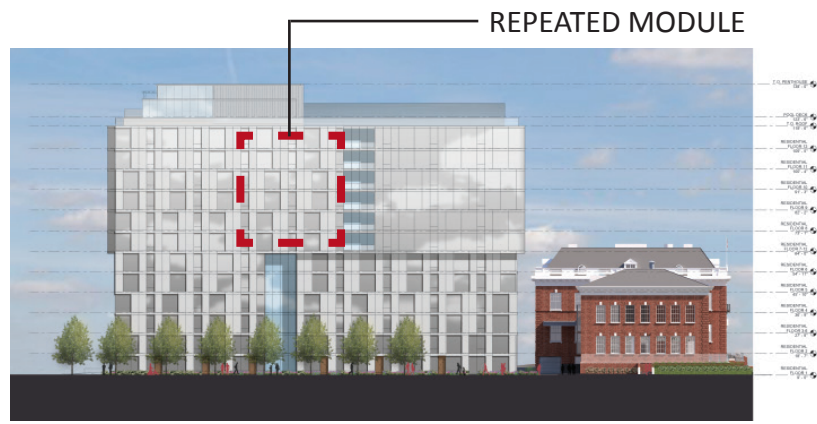
DAYTIME



NIGHTTIME WITH GATE





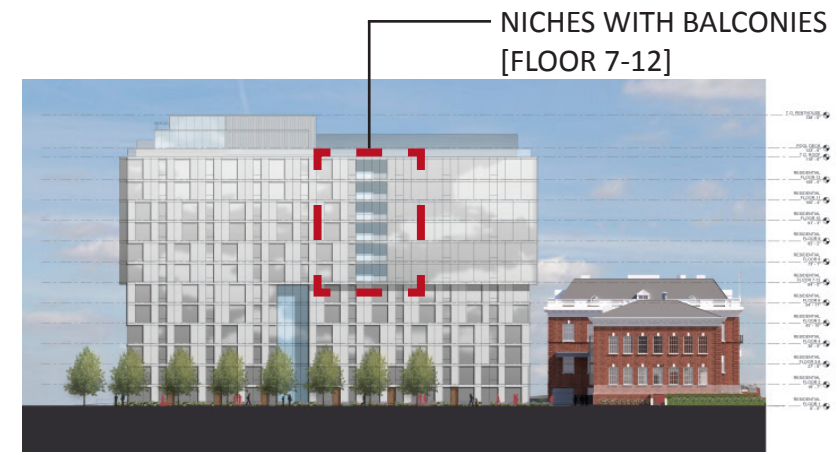
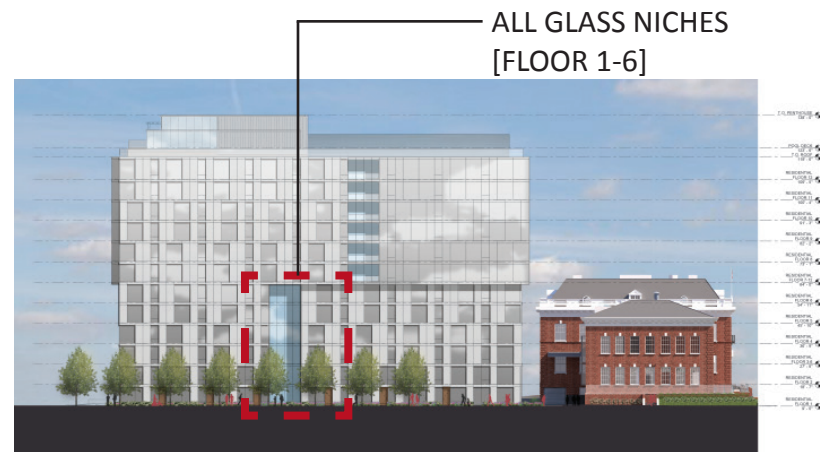


REPEATED MODULE : GLASS AND METAL PANEL

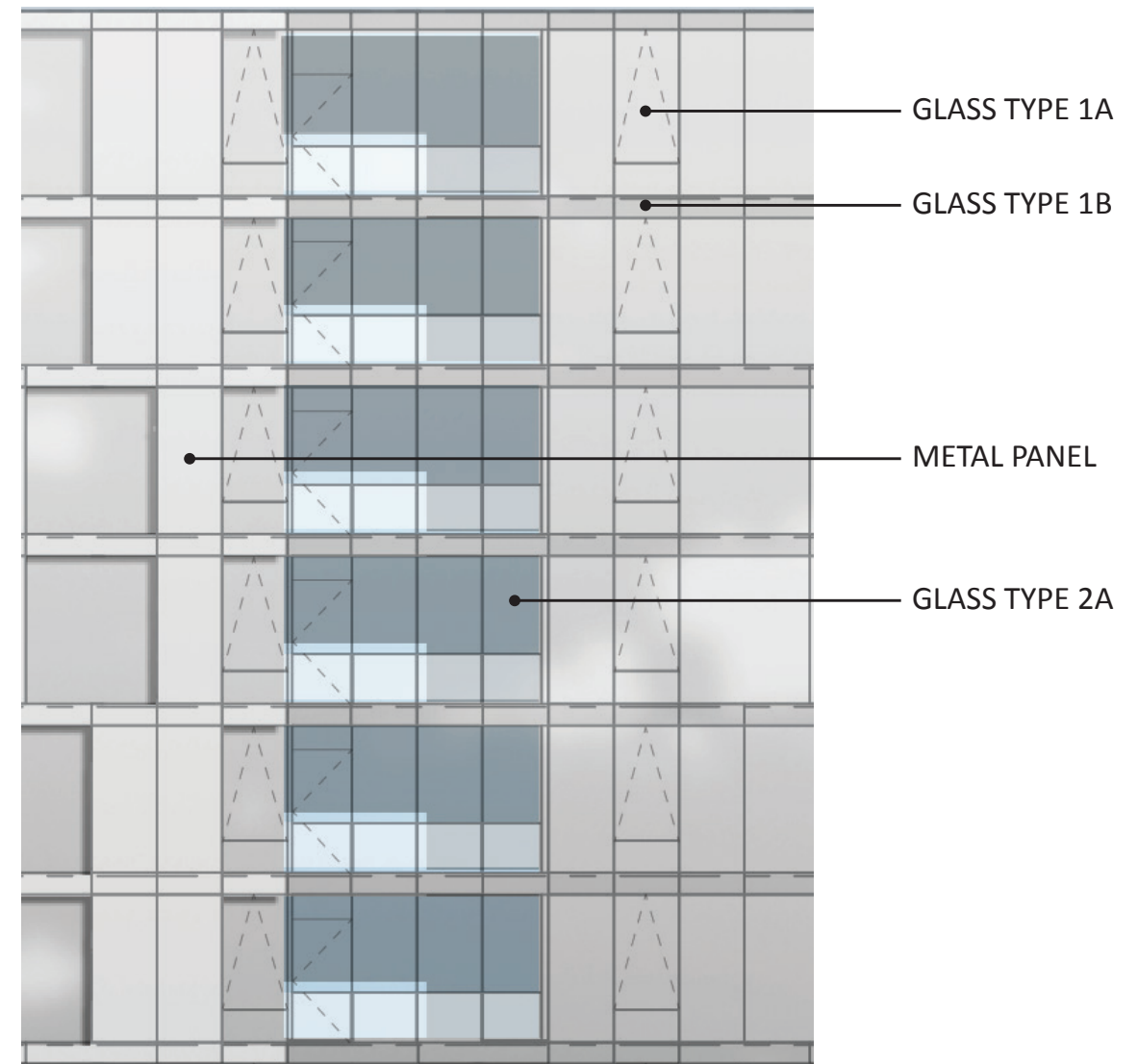
ALL GLASS

ENLARGED ELEVATIONS - MATERIAL CONDITIONS

RANDALL SCHOOL | PUD Modification



ALL GLASS NICHES [FLOOR 1-6]



NICHES WITH BALCONIES [FLOOR 7-12]



- T.O. PENTHOUSE
138' - 0"
- POOL DECK
123' - 6"
- T.O. ROOF
119' - 6"
- RESIDENTIAL FLOOR 12
109' - 5"
- RESIDENTIAL FLOOR 11
100' - 4"
- RESIDENTIAL FLOOR 10
91' - 3"
- RESIDENTIAL FLOOR 9
82' - 2"
- RESIDENTIAL FLOOR 8
73' - 1"
- RESIDENTIAL FLOOR 7-12
64' - 0"
- RESIDENTIAL FLOOR 6
54' - 11"
- RESIDENTIAL FLOOR 5
45' - 10"
- RESIDENTIAL FLOOR 4
36' - 9"
- RESIDENTIAL FLOOR 3-5
27' - 8"
- RESIDENTIAL FLOOR 2
18' - 7"
- RESIDENTIAL FLOOR 1
9' - 0"

PL FIRST STREET SW

PL



ELEVATION - SOUTH

RANDALL SCHOOL | PUD Modification

A29 • ARCHITECTURAL

**BEYER
BLINDER
BELLE**



- T.O. PENTHOUSE
138' - 0"
- POOL DECK
123' - 6"
- T.O. ROOF
119' - 6"
- RESIDENTIAL FLOOR 12
109' - 5"
- RESIDENTIAL FLOOR 11
100' - 4"
- RESIDENTIAL FLOOR 10
91' - 3"
- RESIDENTIAL FLOOR 9
82' - 2"
- RESIDENTIAL FLOOR 8
73' - 1"
- RESIDENTIAL FLOOR 7-12
64' - 0"
- RESIDENTIAL FLOOR 6
54' - 11"
- RESIDENTIAL FLOOR 5
45' - 10"
- RESIDENTIAL FLOOR 4
36' - 9"
- RESIDENTIAL FLOOR 3-6
27' - 8"
- RESIDENTIAL FLOOR 2
18' - 7"
- RESIDENTIAL FLOOR 1
9' - 0"





ELEVATION - NORTH

RANDALL SCHOOL | PUD Modification

