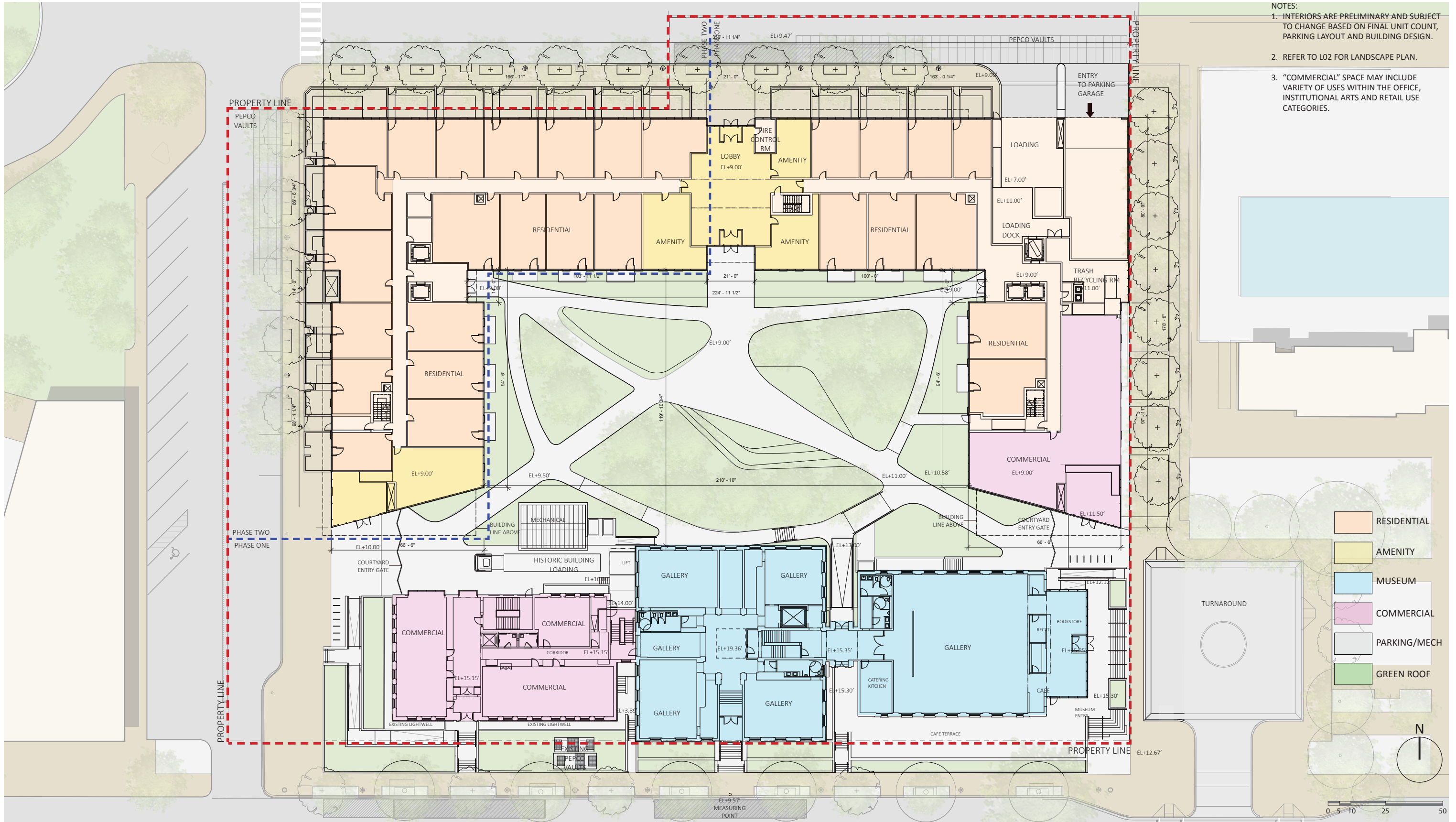


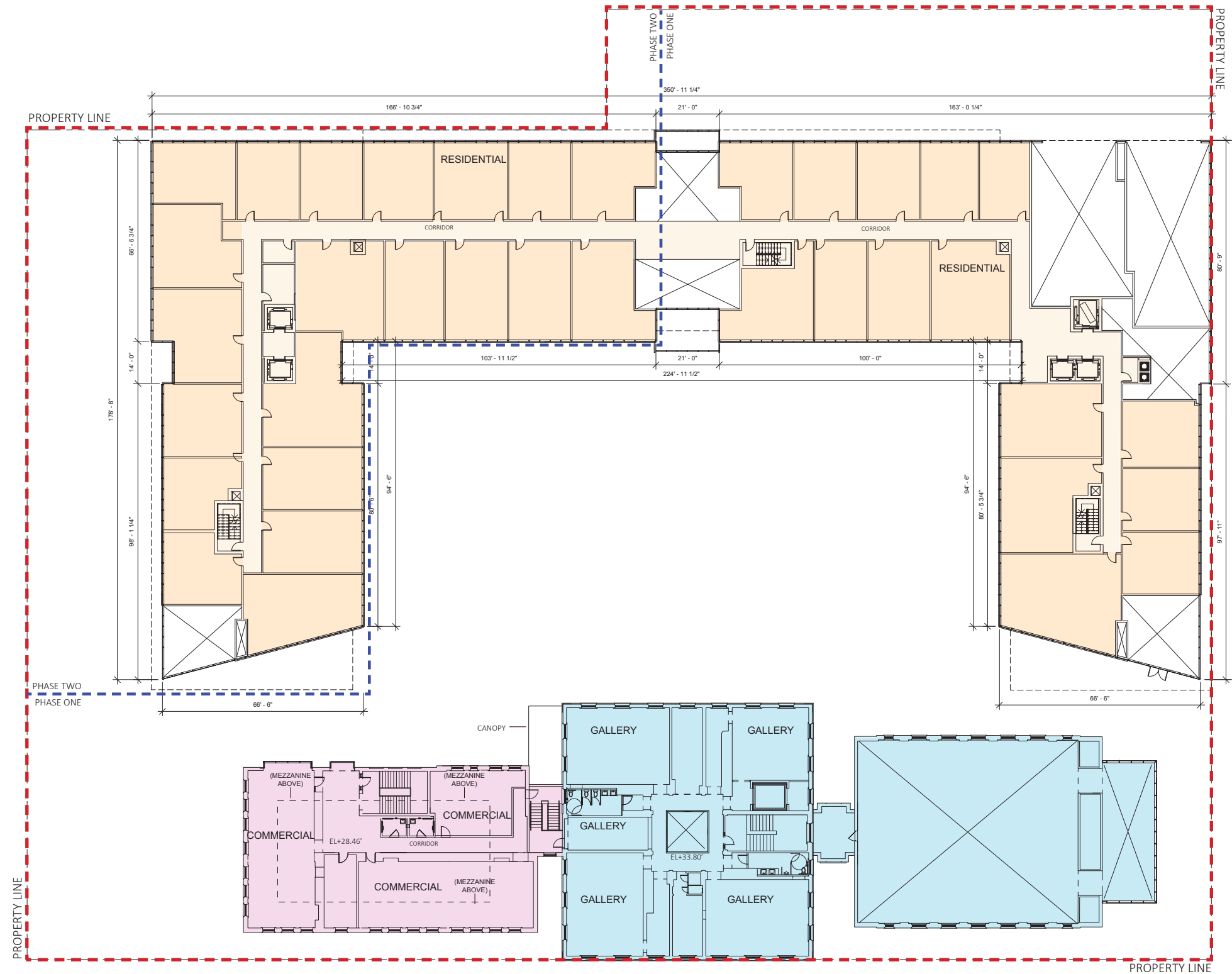
FLOOR PLAN - GROUND LEVEL

RANDALL SCHOOL | PUD Modification

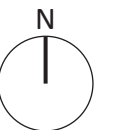


- NOTES:
1. INTERIORS ARE PRELIMINARY AND SUBJECT TO CHANGE BASED ON FINAL UNIT COUNT, PARKING LAYOUT AND BUILDING DESIGN.
 2. REFER TO L02 FOR LANDSCAPE PLAN.
 3. "COMMERCIAL" SPACE MAY INCLUDE VARIETY OF USES WITHIN THE OFFICE, INSTITUTIONAL ARTS AND RETAIL USE CATEGORIES.

- NOTES:
1. INTERIORS ARE PRELIMINARY AND SUBJECT TO CHANGE BASED ON FINAL UNIT COUNT, PARKING LAYOUT AND BUILDING DESIGN.
 2. "COMMERCIAL" SPACE MAY INCLUDE VARIETY OF USES WITHIN THE OFFICE, INSTITUTIONAL ARTS AND RETAIL USE CATEGORIES.



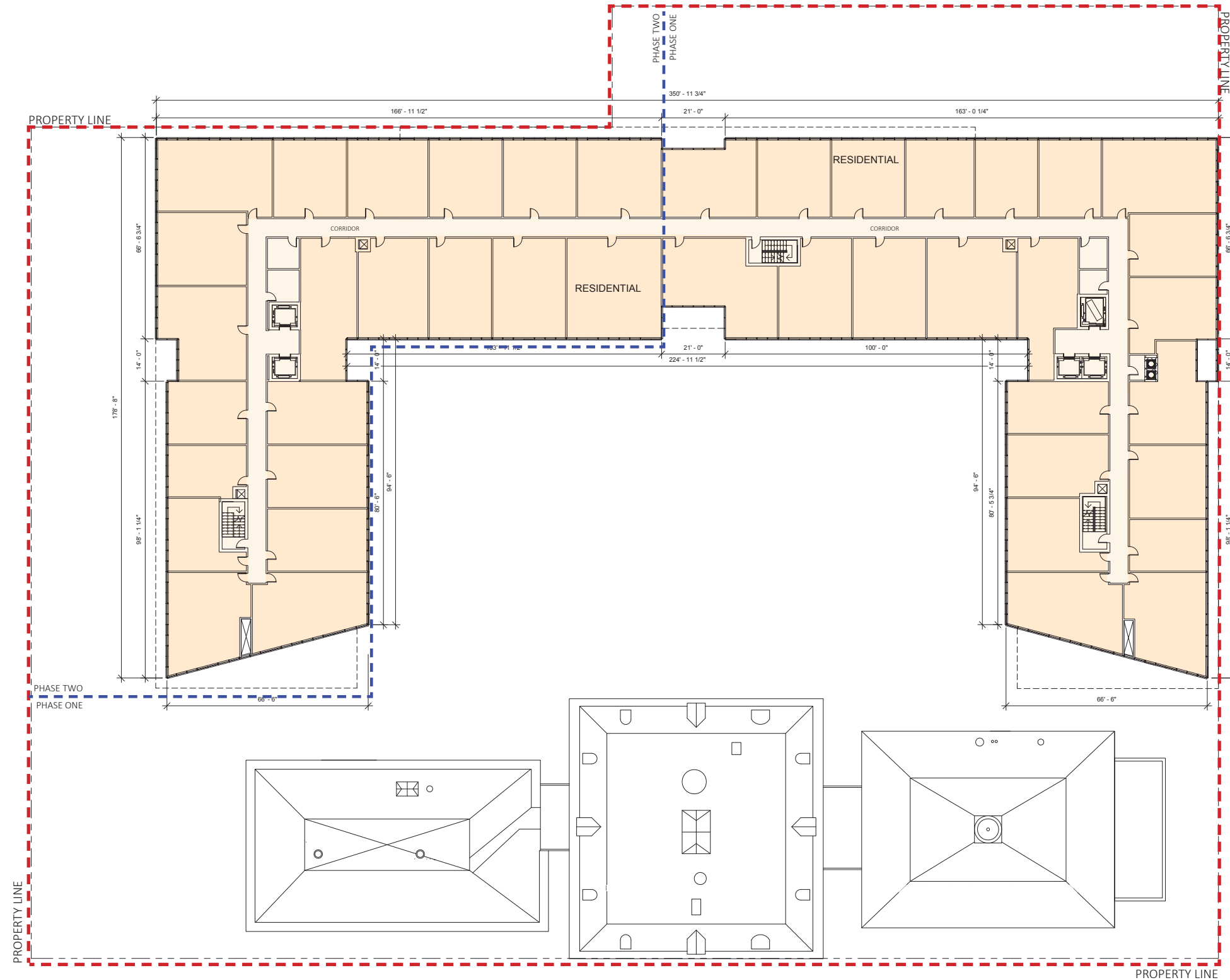
- RESIDENTIAL
- AMENITY
- MUSEUM
- COMMERCIAL
- PARKING/MECH
- GREEN ROOF



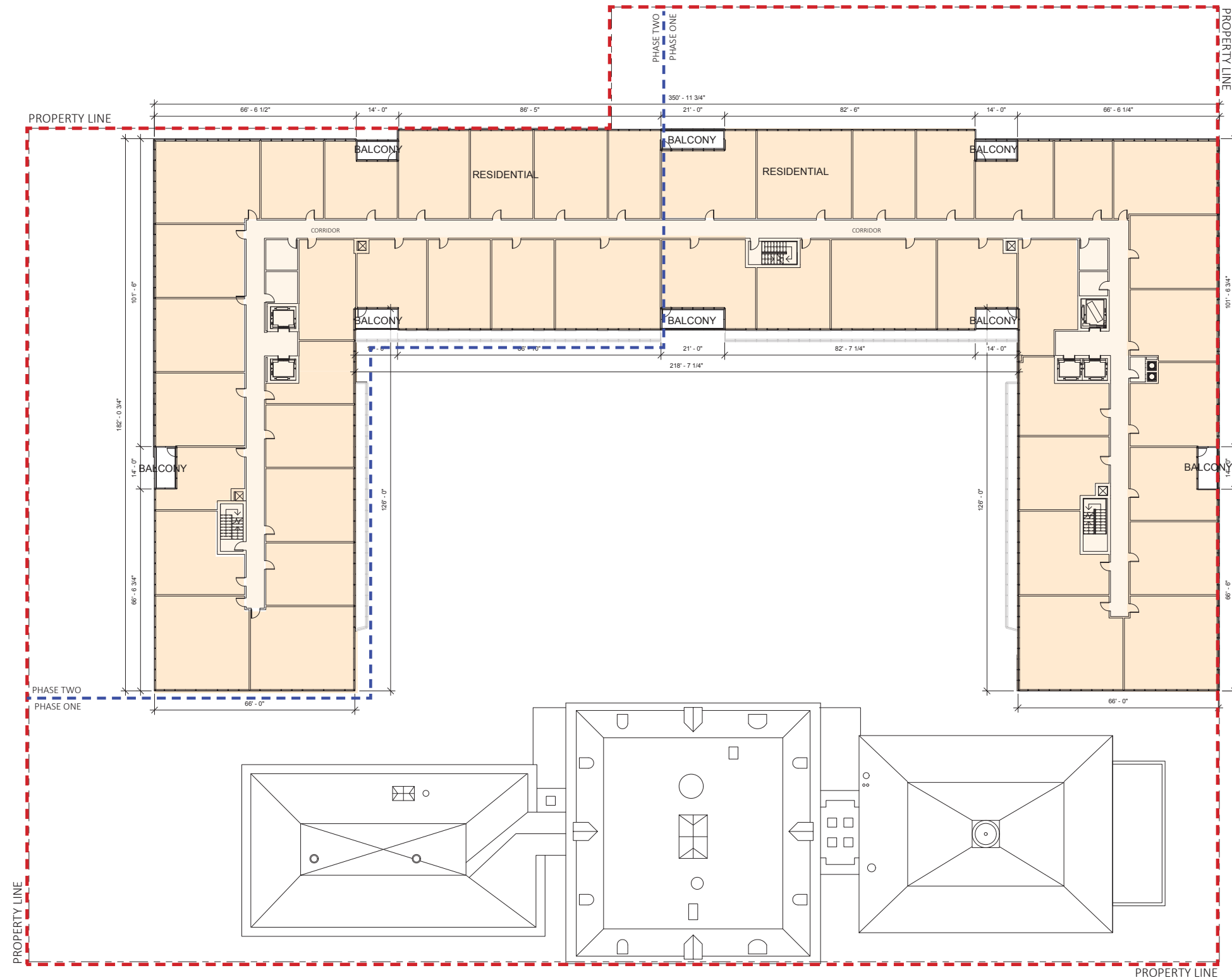
FLOOR PLAN - 2ND LEVEL

RANDALL SCHOOL | PUD Modification

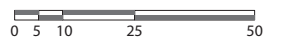
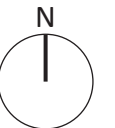
NOTES:
 1. INTERIORS ARE PRELIMINARY AND SUBJECT TO CHANGE BASED ON FINAL UNIT COUNT, PARKING LAYOUT AND BUILDING DESIGN.



NOTES:
 1. INTERIORS ARE PRELIMINARY AND SUBJECT TO CHANGE BASED ON FINAL UNIT COUNT, PARKING LAYOUT AND BUILDING DESIGN.

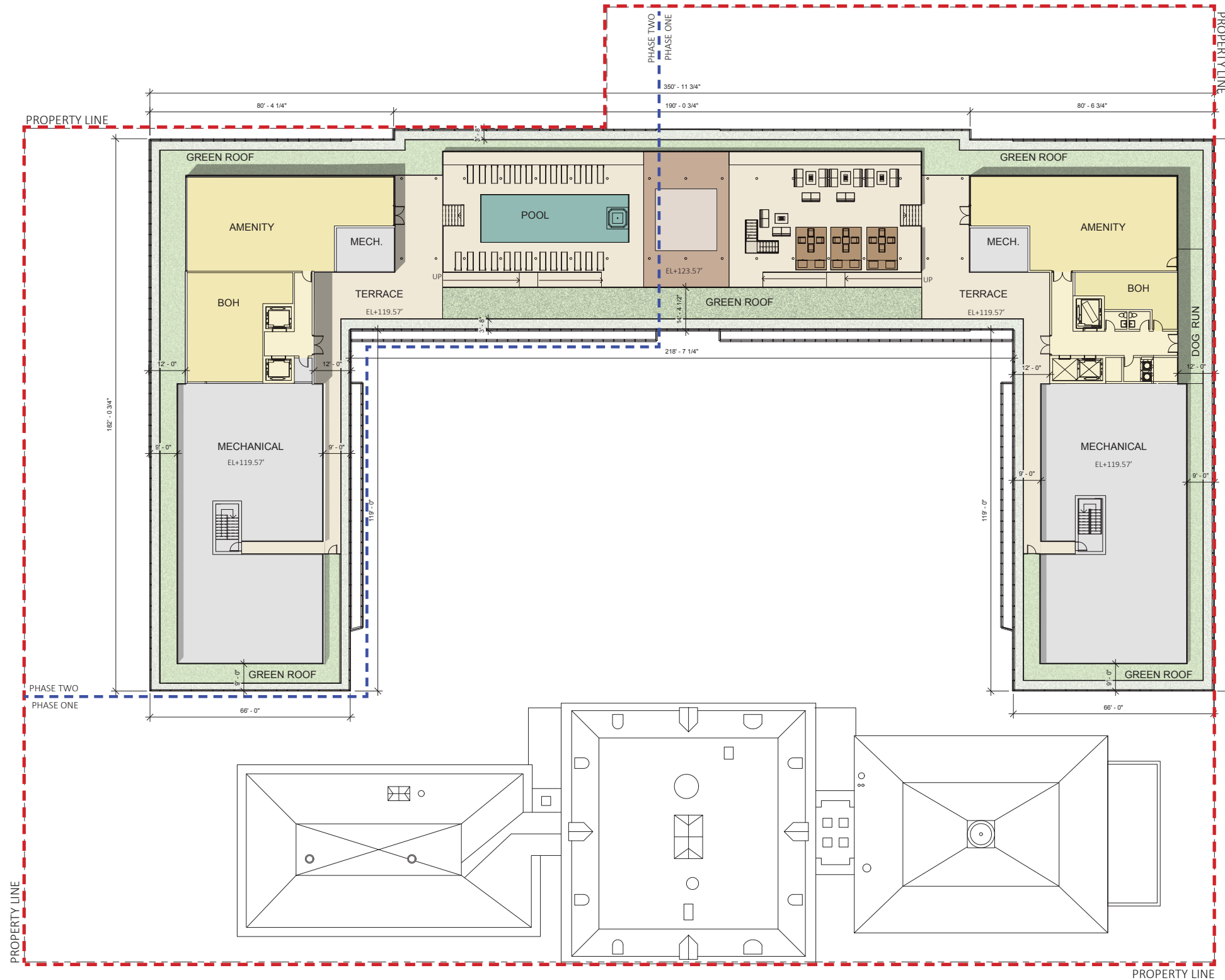


- RESIDENTIAL
- AMENITY
- MUSEUM
- COMMERCIAL
- PARKING/MECH
- GREEN ROOF

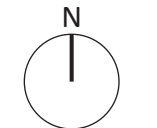


FLOOR PLAN - 7TH-12TH LEVELS
 RANDALL SCHOOL | PUD Modification

NOTES:
 1. INTERIORS ARE PRELIMINARY AND SUBJECT TO CHANGE BASED ON FINAL UNIT COUNT, PARKING LAYOUT AND BUILDING DESIGN.

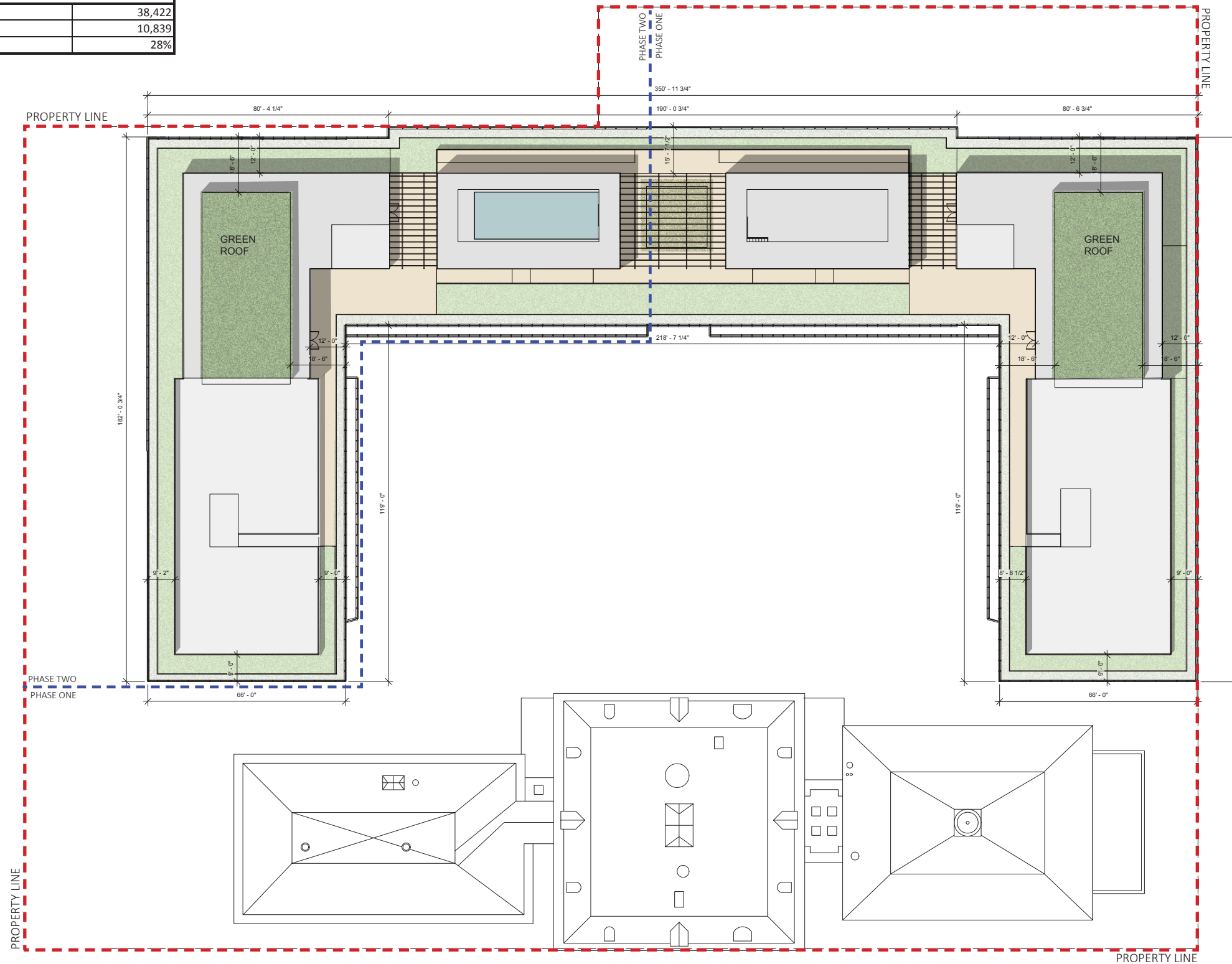


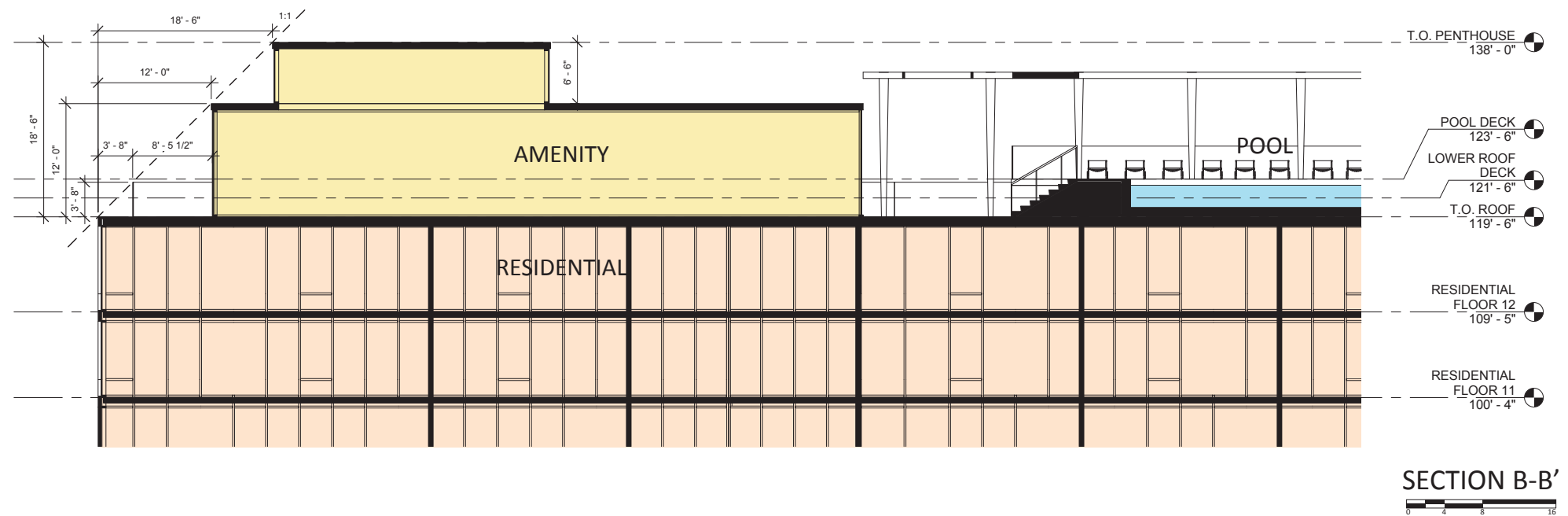
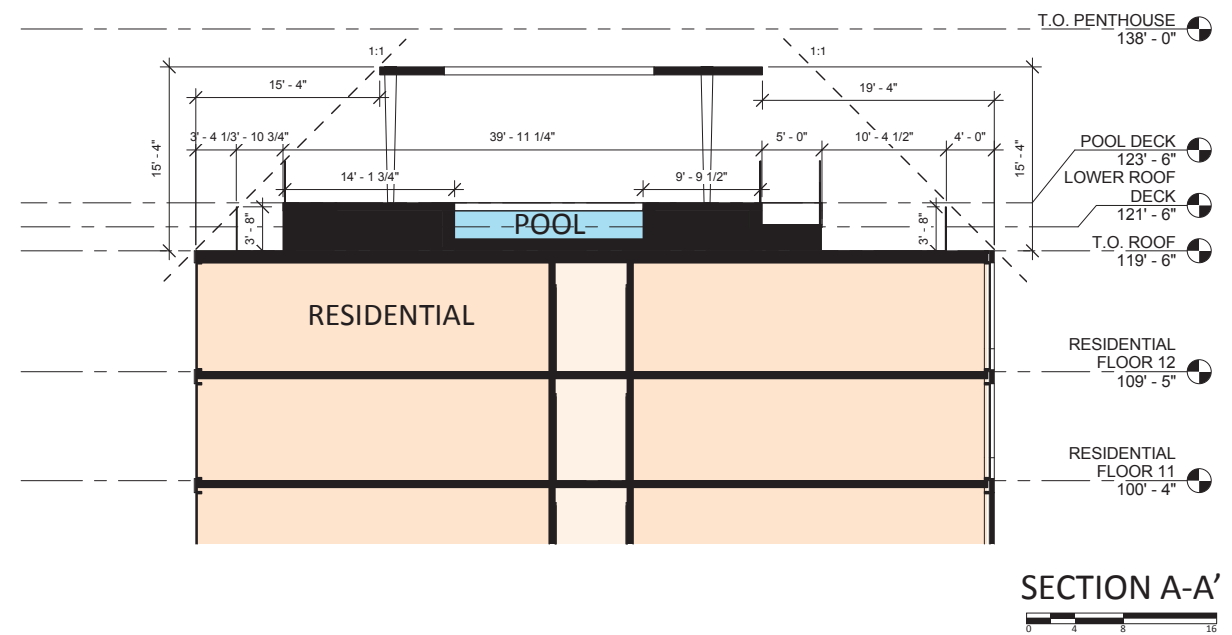
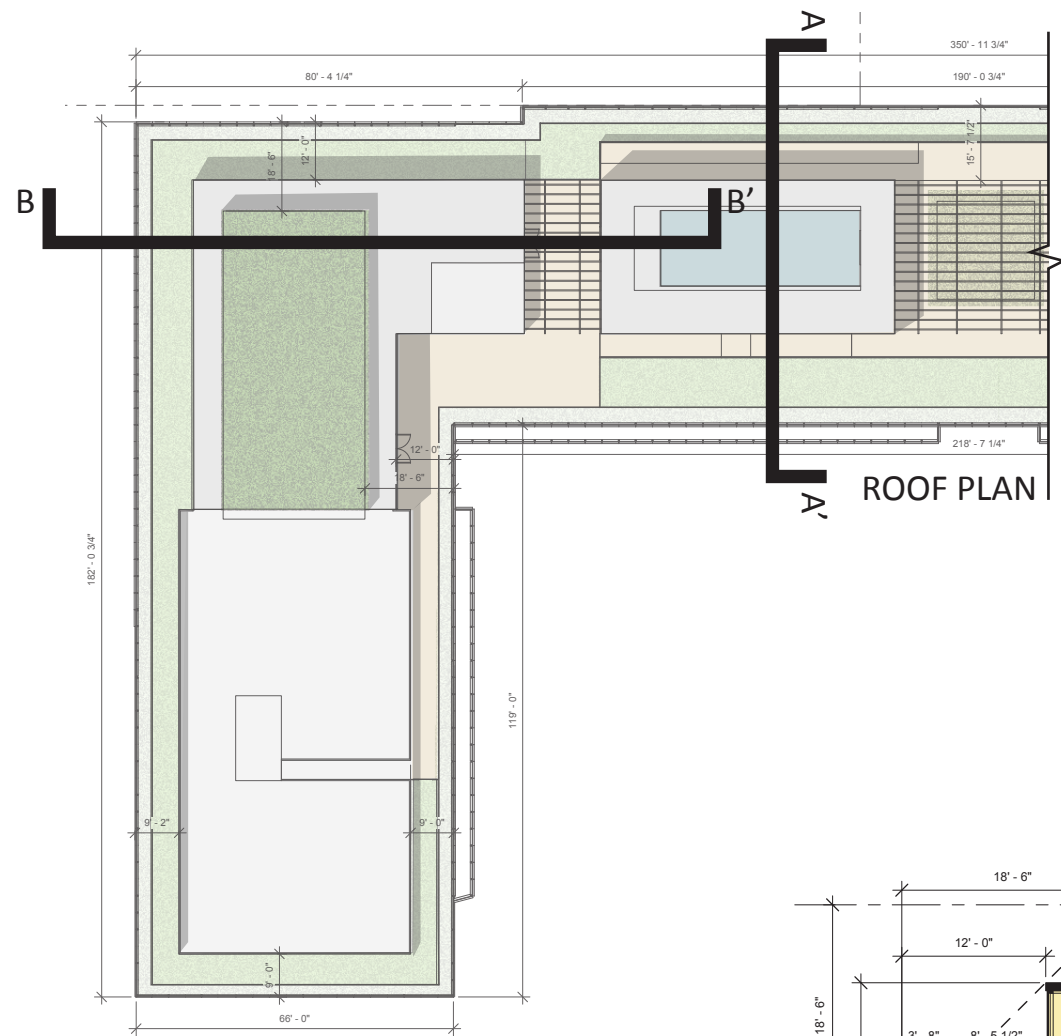
- RESIDENTIAL
- AMENITY
- MUSEUM
- COMMERCIAL
- PARKING/MECH
- GREEN ROOF



PROPOSED GREEN ROOF AREA	
Total Roof Area	38,422
Green Roof Area	10,839
Green Roof Percentage of Total Roof Area	28%

NOTES:
 1. INTERIORS ARE PRELIMINARY AND SUBJECT TO CHANGE BASED ON FINAL UNIT COUNT, PARKING LAYOUT AND BUILDING DESIGN.

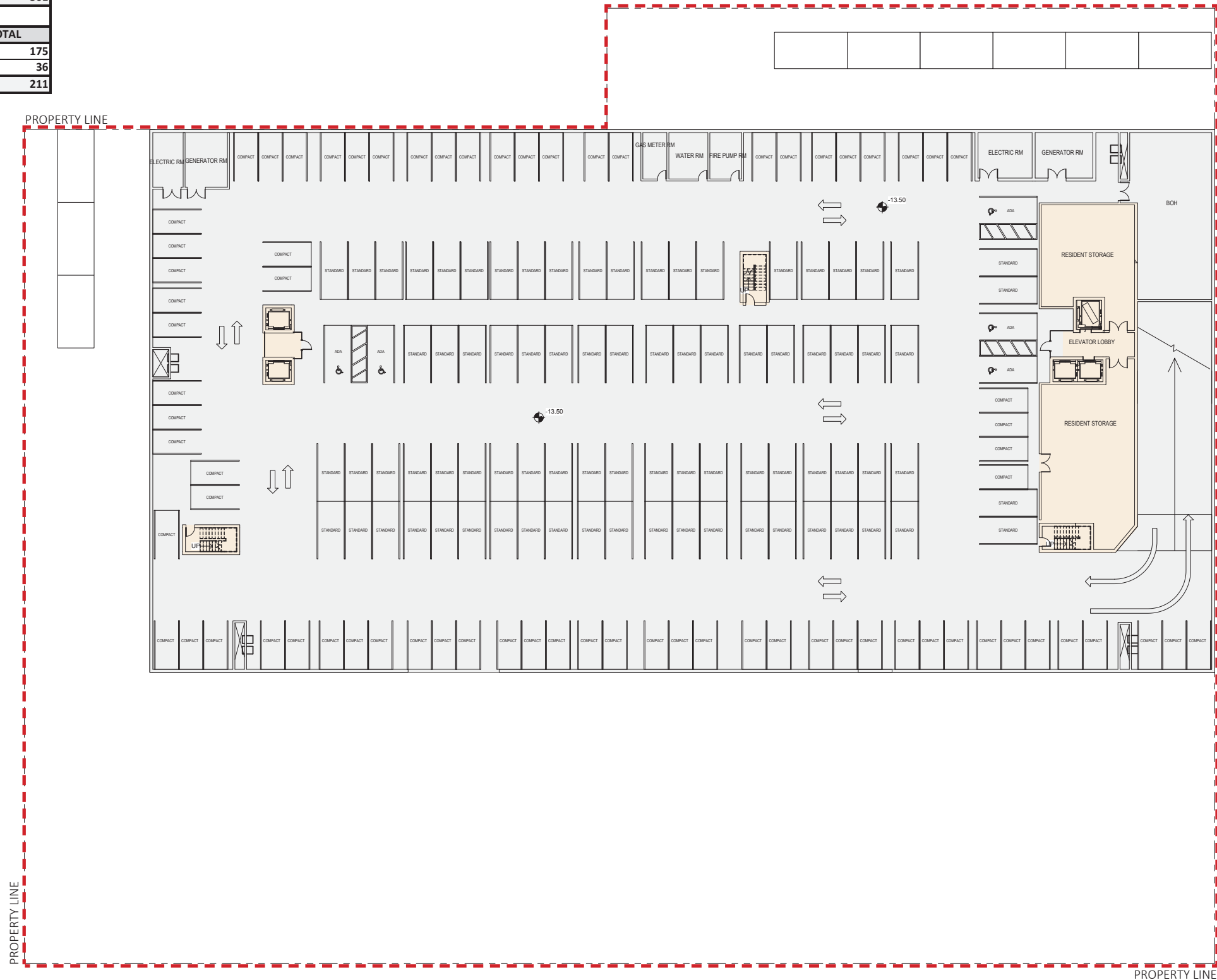




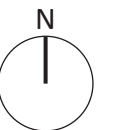
AUTOMOBILE PARKING				
PARKING TYPE	FLOOR P2	FLOOR P1	GROUND FLOOR	TOTAL
ADA Parking	5	6	0	11
Standard	80	78	0	158
Compact	74	58	0	132
TOTAL	159	142	0	301

BIKE PARKING				
PARKING TYPE	FLOOR P2	FLOOR P1	GROUND FLOOR	TOTAL
Long-Term Bike		175		175
Short-Term Bike			36	36
TOTAL	0	175	36	211

- NOTES:
- GARAGE TO BE COMPLETED IN PHASE ONE
 - INTERIORS ARE PRELIMINARY AND SUBJECT TO CHANGE BASED ON FINAL UNIT COUNT, PARKING LAYOUT AND BUILDING DESIGN.
 - ALL DRIVEWAYS IN THE GARAGE ARE 20'-0" WIDE MINIMUM



- RESIDENTIAL
- AMENITY
- MUSEUM
- COMMERCIAL
- PARKING/MECH
- GREEN ROOF

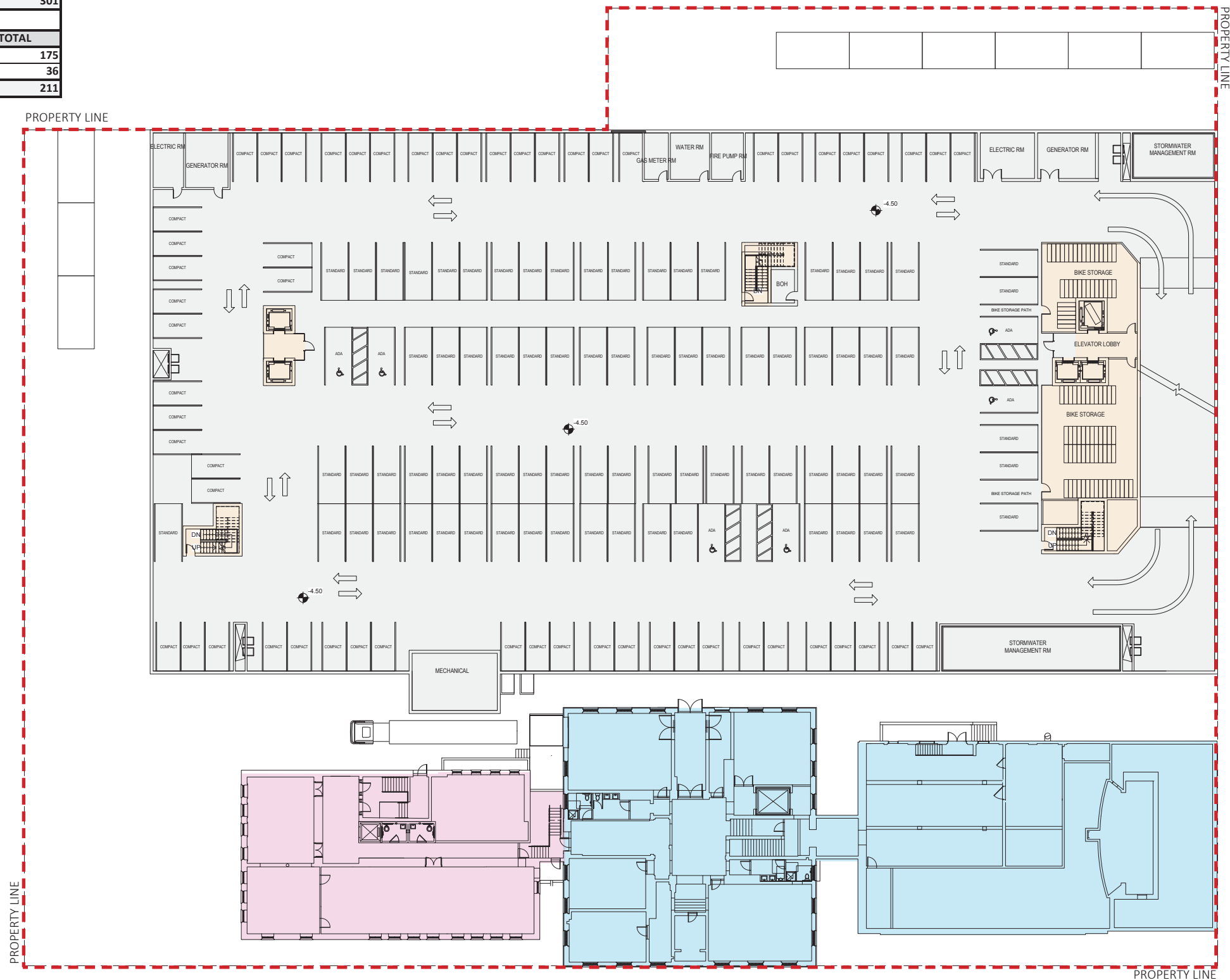


FLOOR PLAN - P2 (PARKING)
 RANDALL SCHOOL | PUD Modification

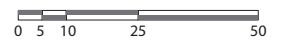
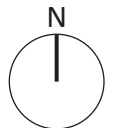
AUTOMOBILE PARKING				
PARKING TYPE	FLOOR P2	FLOOR P1	GROUND FLOOR	TOTAL
ADA Parking	5	6	0	11
Standard	80	78	0	158
Compact	74	58	0	132
TOTAL	159	142	0	301

BIKE PARKING				
PARKING TYPE	FLOOR P2	FLOOR P1	GROUND FLOOR	TOTAL
Long-Term Bike		175		175
Short-Term Bike			36	36
TOTAL	0	175	36	211

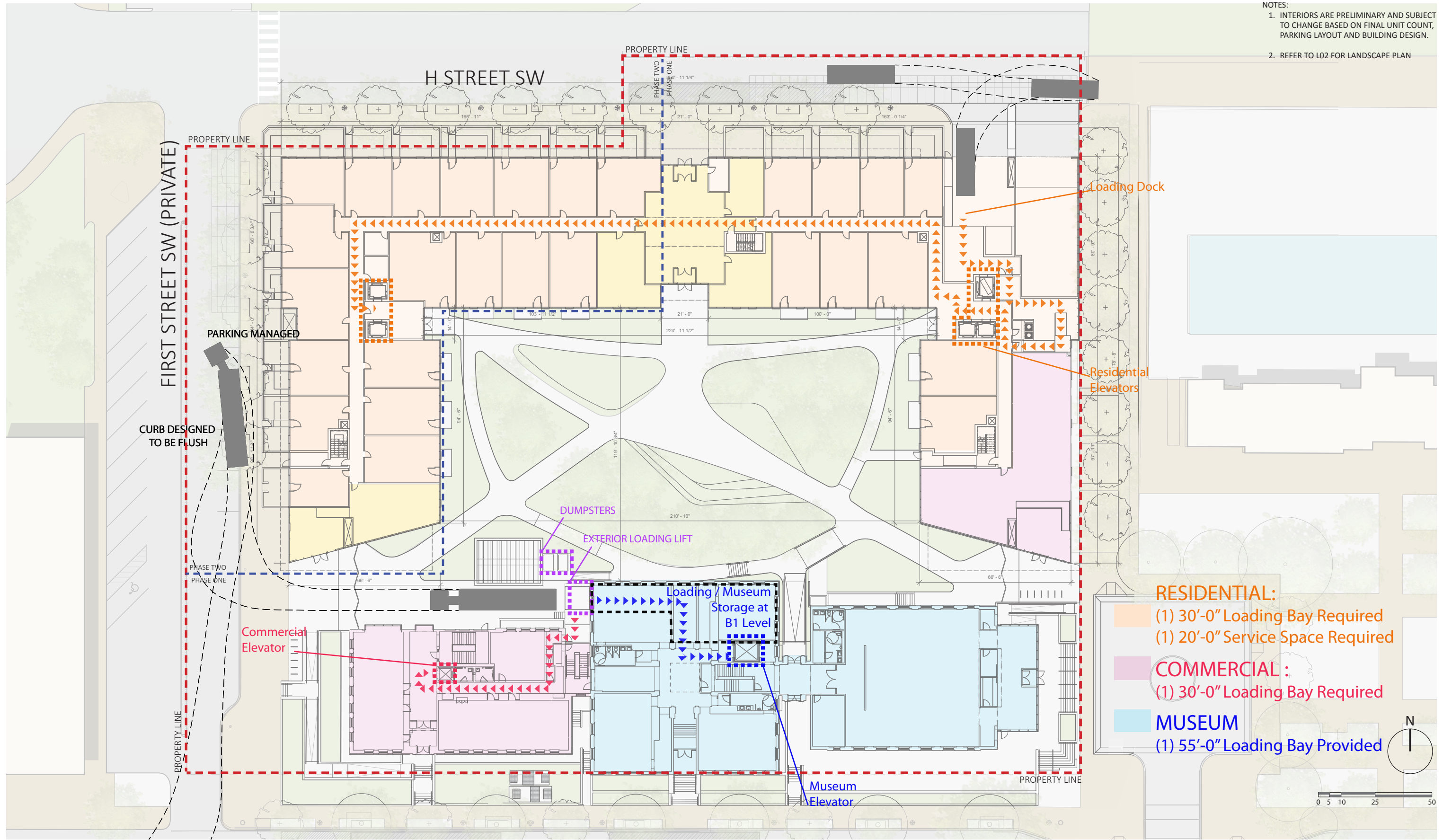
- NOTES:
- GARAGE TO BE COMPLETED IN PHASE ONE
 - INTERIORS ARE PRELIMINARY AND SUBJECT TO CHANGE BASED ON FINAL UNIT COUNT, PARKING LAYOUT AND BUILDING DESIGN.
 - ALL DRIVEWAYS IN THE GARAGE ARE 20'-0" WIDE MINIMUM



- RESIDENTIAL
- AMENITY
- MUSEUM
- COMMERCIAL
- PARKING/MECH
- GREEN ROOF



NOTES:
 1. INTERIORS ARE PRELIMINARY AND SUBJECT TO CHANGE BASED ON FINAL UNIT COUNT, PARKING LAYOUT AND BUILDING DESIGN.
 2. REFER TO L02 FOR LANDSCAPE PLAN

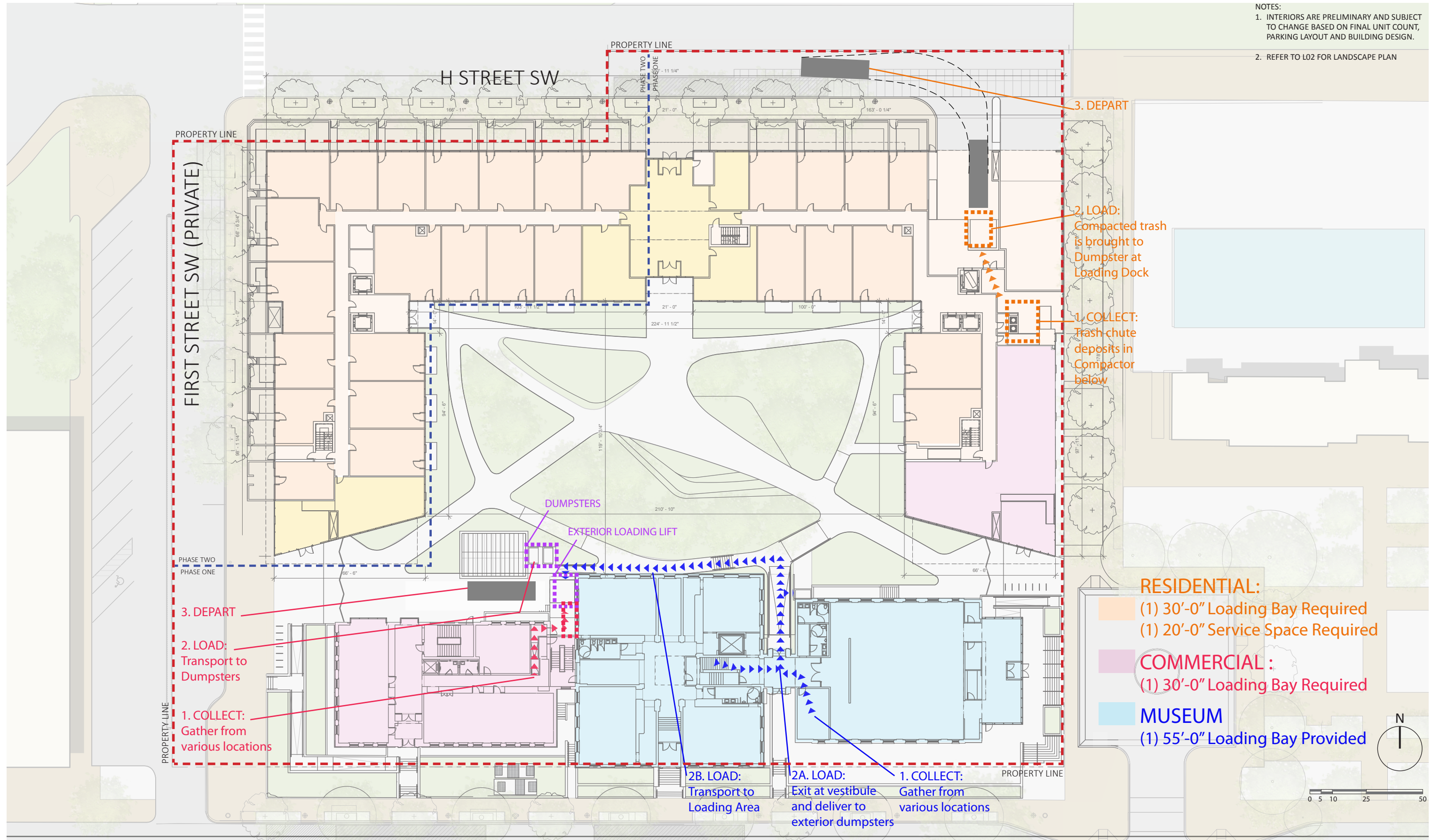


- RESIDENTIAL:**
 (1) 30'-0" Loading Bay Required
 (1) 20'-0" Service Space Required
- COMMERCIAL:**
 (1) 30'-0" Loading Bay Required
- MUSEUM**
 (1) 55'-0" Loading Bay Provided

LOADING PLAN

RANDALL SCHOOL | PUD Modification

NOTES:
 1. INTERIORS ARE PRELIMINARY AND SUBJECT TO CHANGE BASED ON FINAL UNIT COUNT, PARKING LAYOUT AND BUILDING DESIGN.
 2. REFER TO L02 FOR LANDSCAPE PLAN



3. DEPART

2. LOAD:
 Compacted trash is brought to Dumpster at Loading Dock

1. COLLECT:
 Trash chute deposits in Compactor below

3. DEPART

2. LOAD:
 Transport to Dumpsters

1. COLLECT:
 Gather from various locations

2B. LOAD:
 Transport to Loading Area

2A. LOAD:
 Exit at vestibule and deliver to exterior dumpsters

1. COLLECT:
 Gather from various locations

RESIDENTIAL:
 (1) 30'-0" Loading Bay Required
 (1) 20'-0" Service Space Required

COMMERCIAL:
 (1) 30'-0" Loading Bay Required

MUSEUM
 (1) 55'-0" Loading Bay Provided



BIRD'S EYE AERIAL VIEW

RANDALL SCHOOL | PUD Modification

A21 • ARCHITECTURAL

**BEYER
BLINDER
BELLE**