

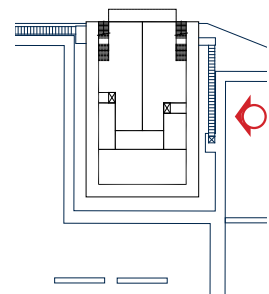
T.O ELEV. OVERRUN
GL.+34'-0"

SECOND FLOOR

GROUND LEVEL
+/-0'-0"



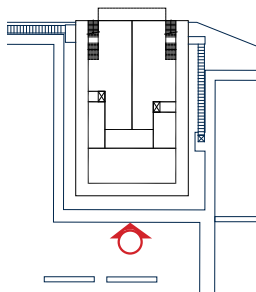
5' 10' 15' 30'



T.O ELEV. OVERRUN
GL.+34'-0"

SECOND FLOOR

GROUND LEVEL
+/-0'-0"



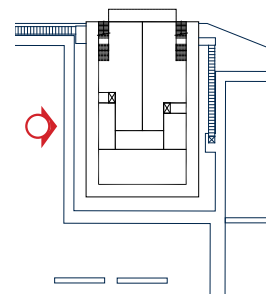
T.O ELEV. OVERRUN
GL.+34'-0"

SECOND FLOOR

GROUND LEVEL
+/-0'-0"



5' 10' 15' 30'






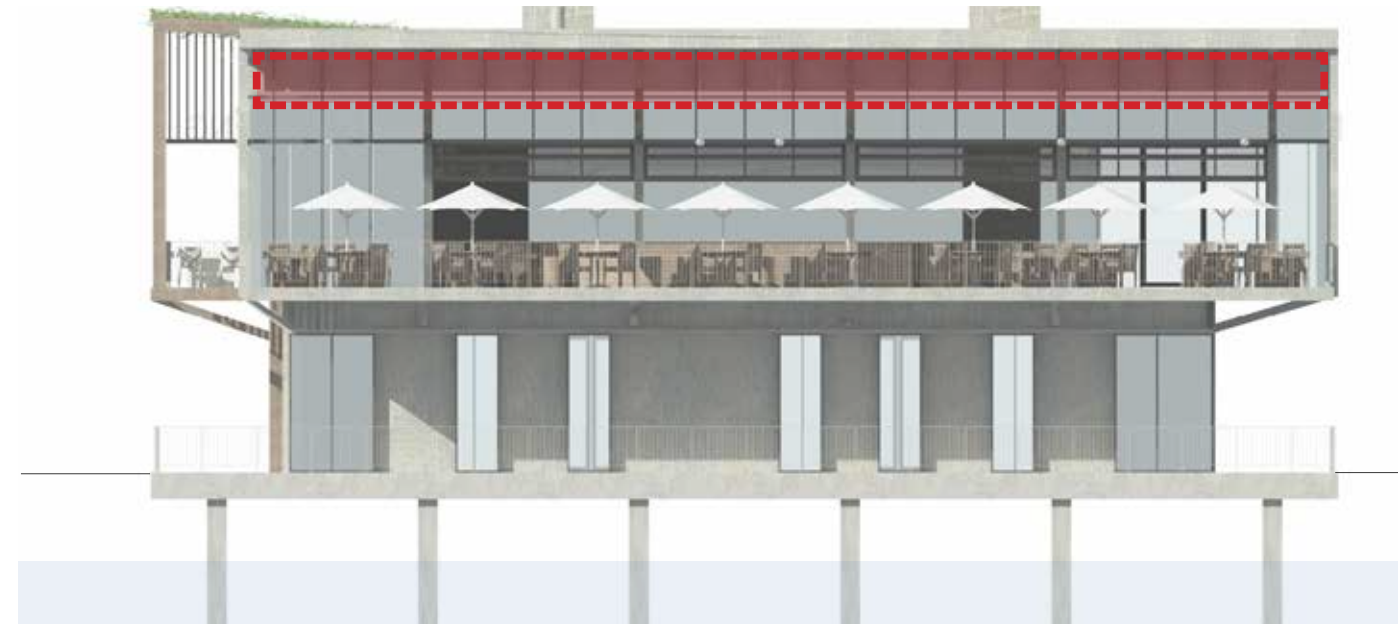
North Elevation



East Elevation

1. RETAIL SIGNAGE PLACEMENT IS FOR ILLUSTRATIVE PURPOSES ONLY. ACTUAL RETAIL SIGNAGE PLACEMENT, EXTENT, AND DESIGN TO BE COORDINATED WITH INDIVIDUAL TENANT(S)/OCCUPANT(S) REQUIREMENTS. RETAIL SIGNAGE TO BE DESIGNED AND CONSTRUCTED IN ACCORDANCE WITH THE DC BUILDING CODE AND SIGN REGULATIONS IN EFFECT AT THE TIME OF PERMITTING, INCLUDING REGULATIONS APPLICABLE TO DESIGNATED ENTERTAINMENT AREAS, IF APPLICABLE.
2. GROUND FLOOR RETAIL BAY ELEVATIONS AND STOREFRONT ENTRANCES ARE ILLUSTRATIVE AND INTENDED TO DESCRIBE THE CHARACTER AND SCALE FOR THE BASE OF THE BUILDING. THE ACTUAL RETAIL BAY ELEVATIONS WILL BE DEVELOPED BY INDIVIDUAL RETAIL TENANT(S)/OCCUPANTS, SUBJECT TO APPROVAL BY THE BUILDING OWNER. GROUND FLOOR RETAIL BAY ELEVATIONS AND STOREFRONT ENTRANCES ARE SUBJECT TO CHANGE WITH EACH NEW TENANT THAT OCCUPIES A PARTICULAR RETAIL SPACE.
3. TENANT SIGNAGE DESIGN SHALL BE COMPATIBLE WITH AND COMPLEMENT THE BUILDING ARCHITECTURE, BE COORDINATED WITH THE BUILDING FAÇADE SYSTEM, AND CONSIST OF HIGH-QUALITY MATERIALS.
4. RETAIL SIGNAGE AND TENANT SIGNAGE MAY CONTAIN LETTERS AND/OR GRAPHIC LOGOS, AND MAY BE SELF-ILLUMINATED OR BACK-LIT.

 SIGNAGE



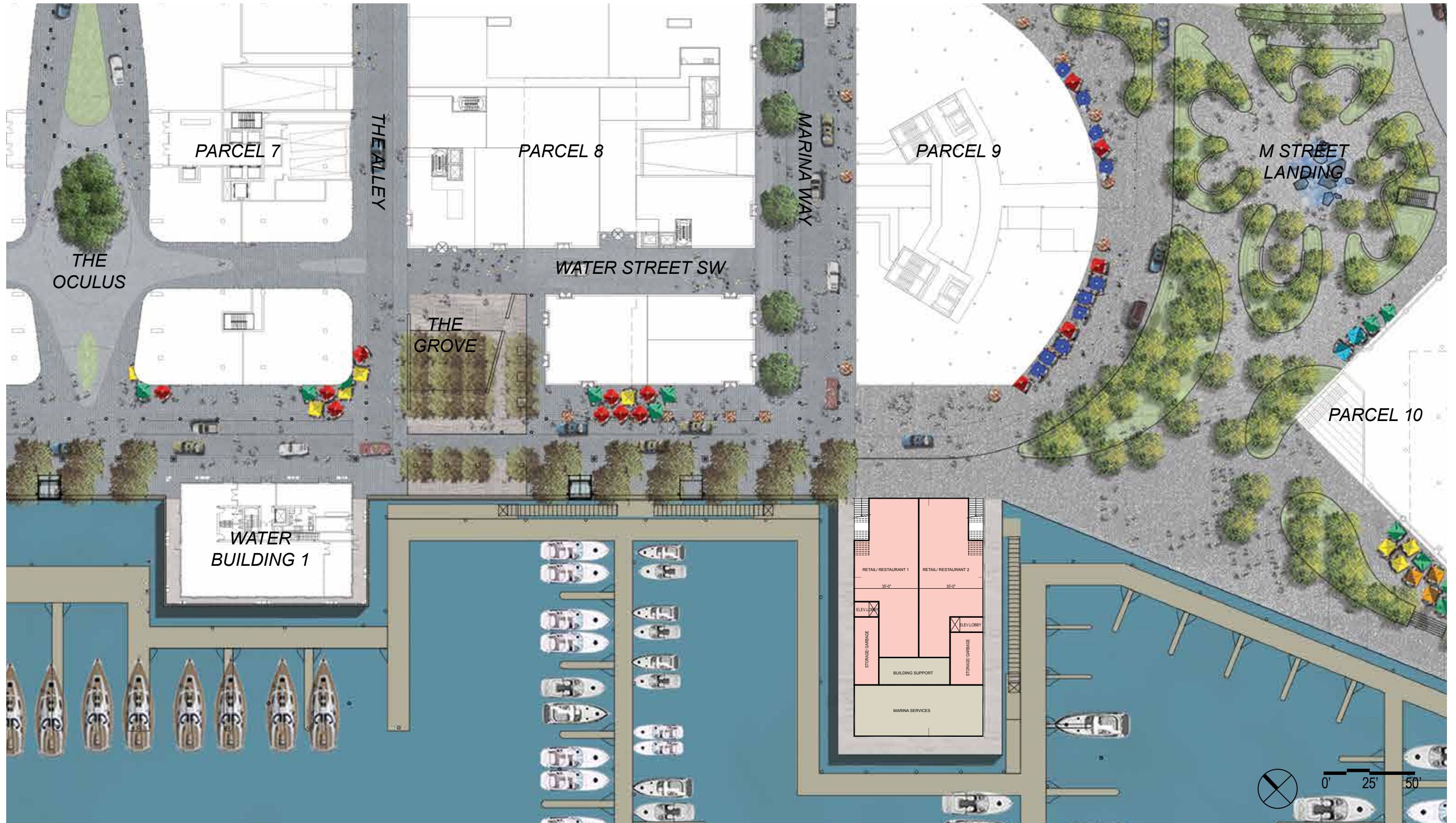
South Elevation

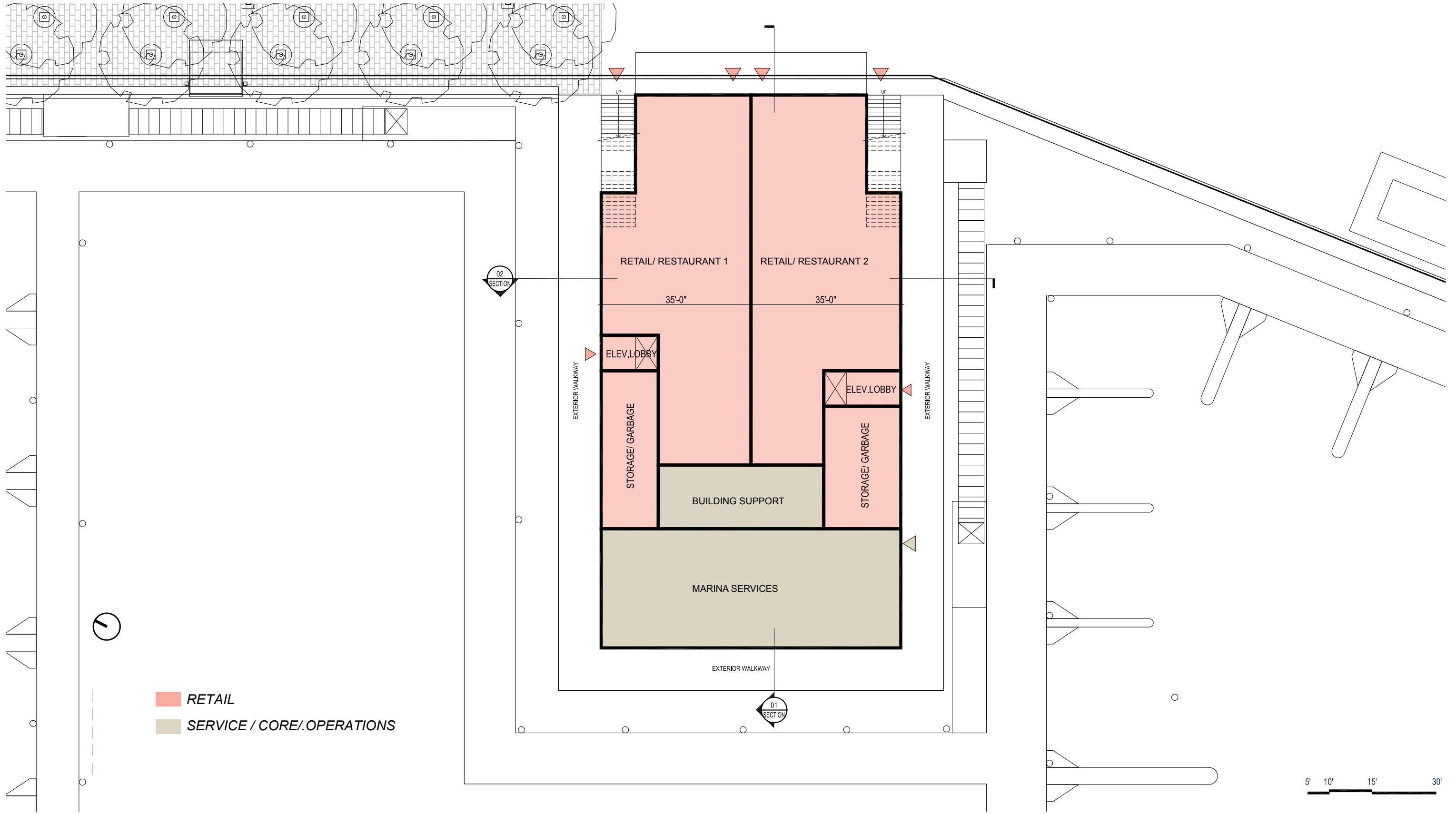


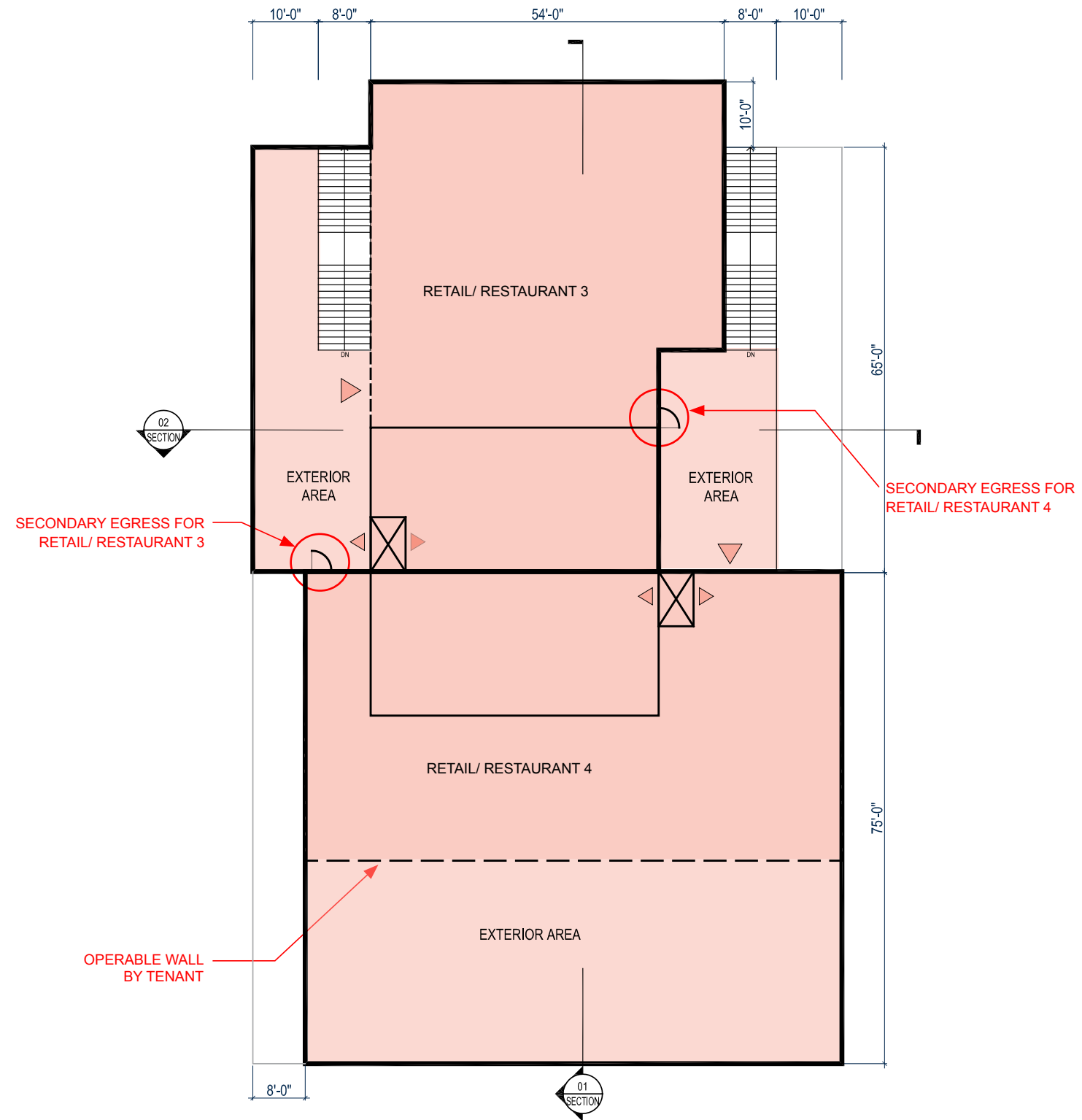
West Elevation

1. RETAIL SIGNAGE PLACEMENT IS FOR ILLUSTRATIVE PURPOSES ONLY. ACTUAL RETAIL SIGNAGE PLACEMENT, EXTENT, AND DESIGN TO BE COORDINATED WITH INDIVIDUAL TENANT(S)/OCCUPANT(S) REQUIREMENTS. RETAIL SIGNAGE TO BE DESIGNED AND CONSTRUCTED IN ACCORDANCE WITH THE DC BUILDING CODE AND SIGN REGULATIONS IN EFFECT AT THE TIME OF PERMITTING, INCLUDING REGULATIONS APPLICABLE TO DESIGNATED ENTERTAINMENT AREAS, IF APPLICABLE.
2. GROUND FLOOR RETAIL BAY ELEVATIONS AND STOREFRONT ENTRANCES ARE ILLUSTRATIVE AND INTENDED TO DESCRIBE THE CHARACTER AND SCALE FOR THE BASE OF THE BUILDING. THE ACTUAL RETAIL BAY ELEVATIONS WILL BE DEVELOPED BY INDIVIDUAL RETAIL TENANT(S)/OCCUPANTS, SUBJECT TO APPROVAL BY THE BUILDING OWNER. GROUND FLOOR RETAIL BAY ELEVATIONS AND STOREFRONT ENTRANCES ARE SUBJECT TO CHANGE WITH EACH NEW TENANT THAT OCCUPIES A PARTICULAR RETAIL SPACE.
3. TENANT SIGNAGE DESIGN SHALL BE COMPATIBLE WITH AND COMPLEMENT THE BUILDING ARCHITECTURE, BE COORDINATED WITH THE BUILDING FAÇADE SYSTEM, AND CONSIST OF HIGH-QUALITY MATERIALS.
4. RETAIL SIGNAGE AND TENANT SIGNAGE MAY CONTAIN LETTERS AND/OR GRAPHIC LOGOS, AND MAY BE SELF-ILLUMINATED OR BACK-LIT.

 SIGNAGE

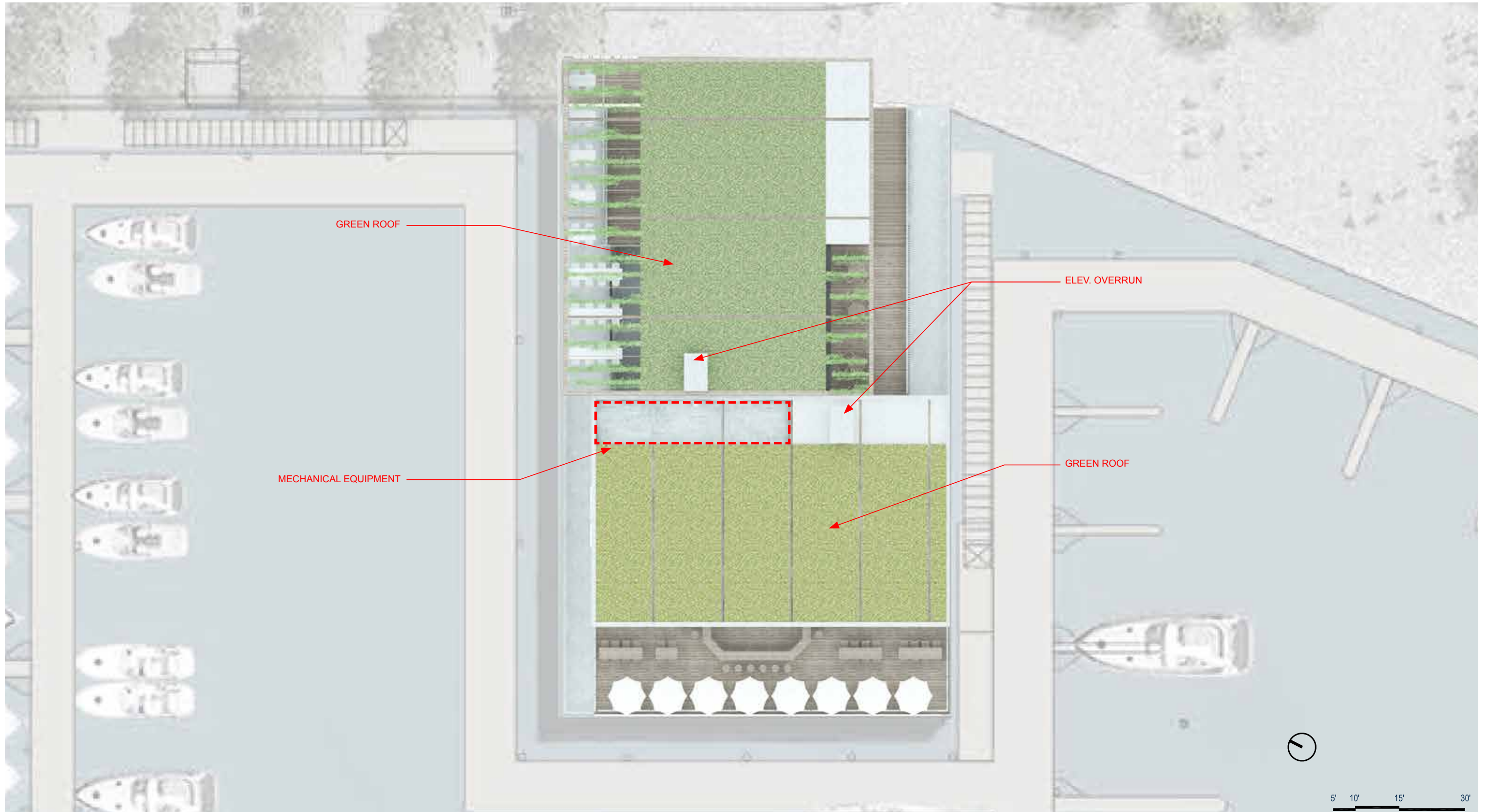






- RETAIL
- SERVICE / CORE / OPERATIONS



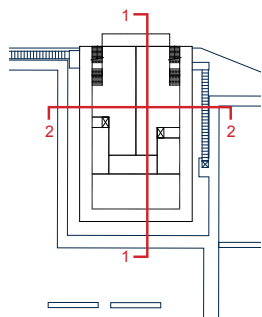
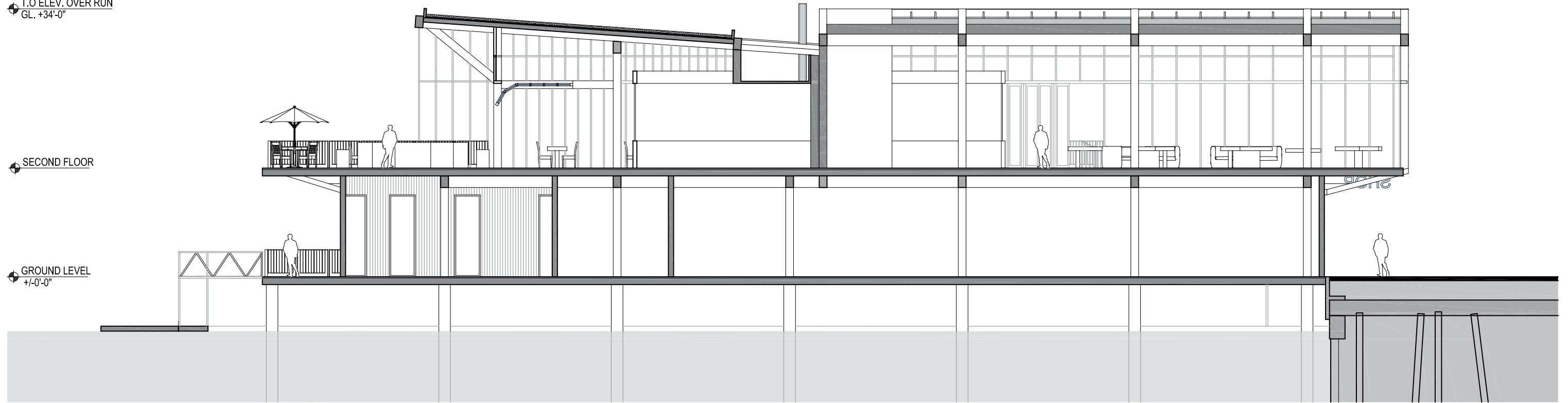




T.O ELEV. OVER RUN
GL. +34'-0"

SECOND FLOOR

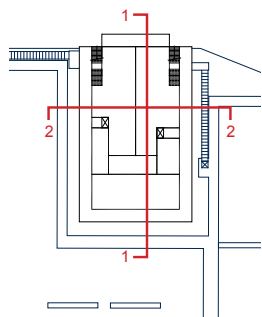
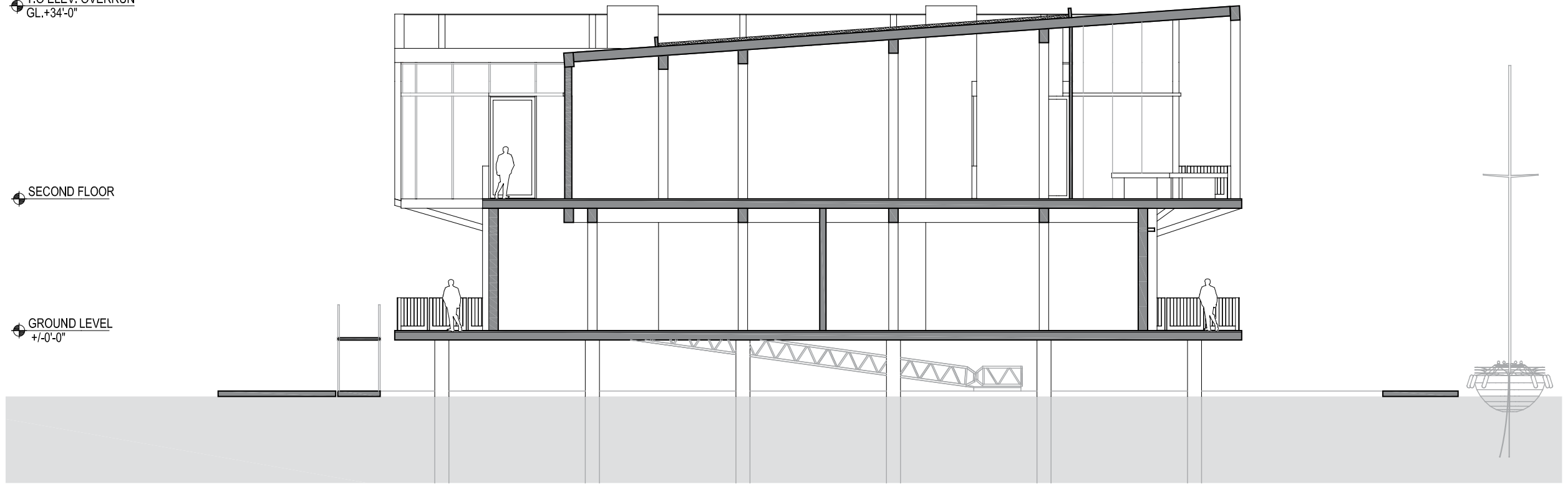
GROUND LEVEL
+/-0'-0"



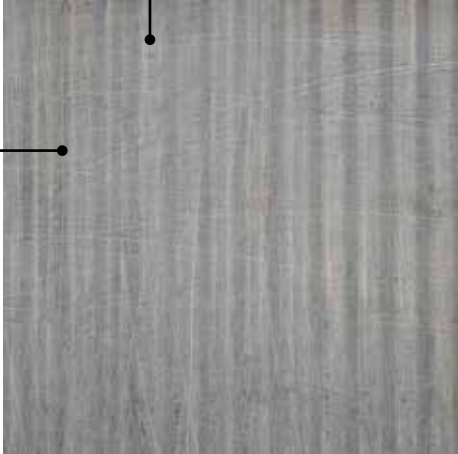
T.O. ELEV. OVERRUN
GL. +34'-0"

SECOND FLOOR

GROUND LEVEL
+/-0'-0"



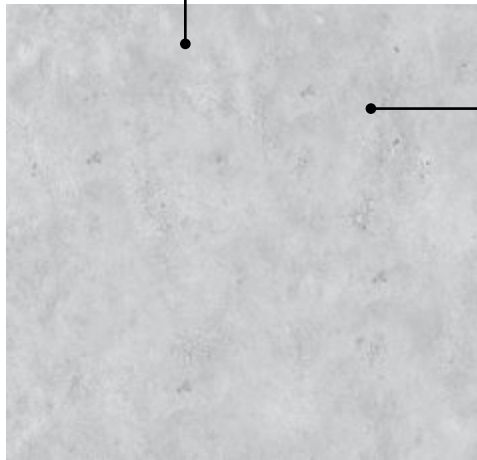
5' 10' 15' 30'



Galvanized Metal



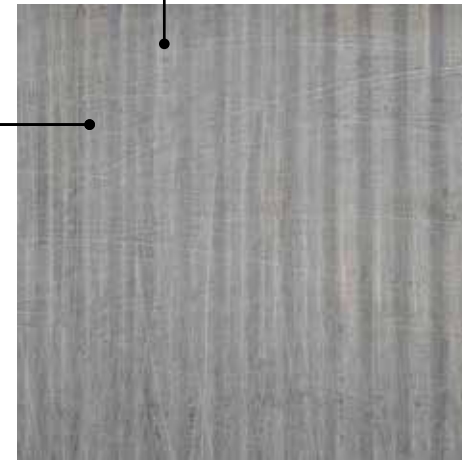
Wood



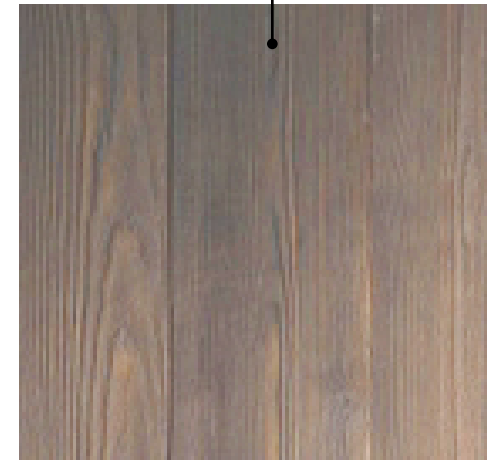
Concrete Paver



Wood Floor



Galvanized Metal



Wood

4

OPEN SPACE



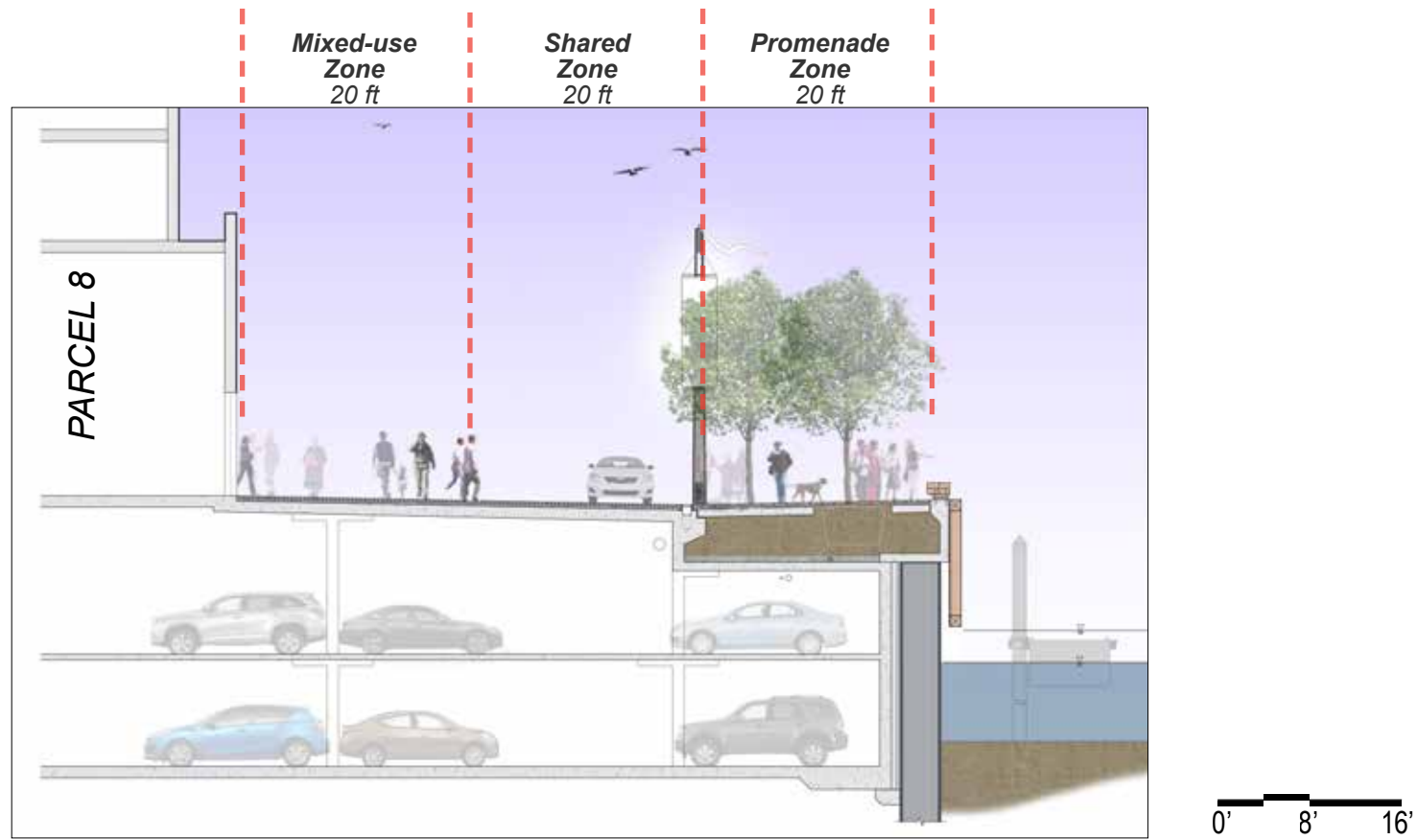


4.2

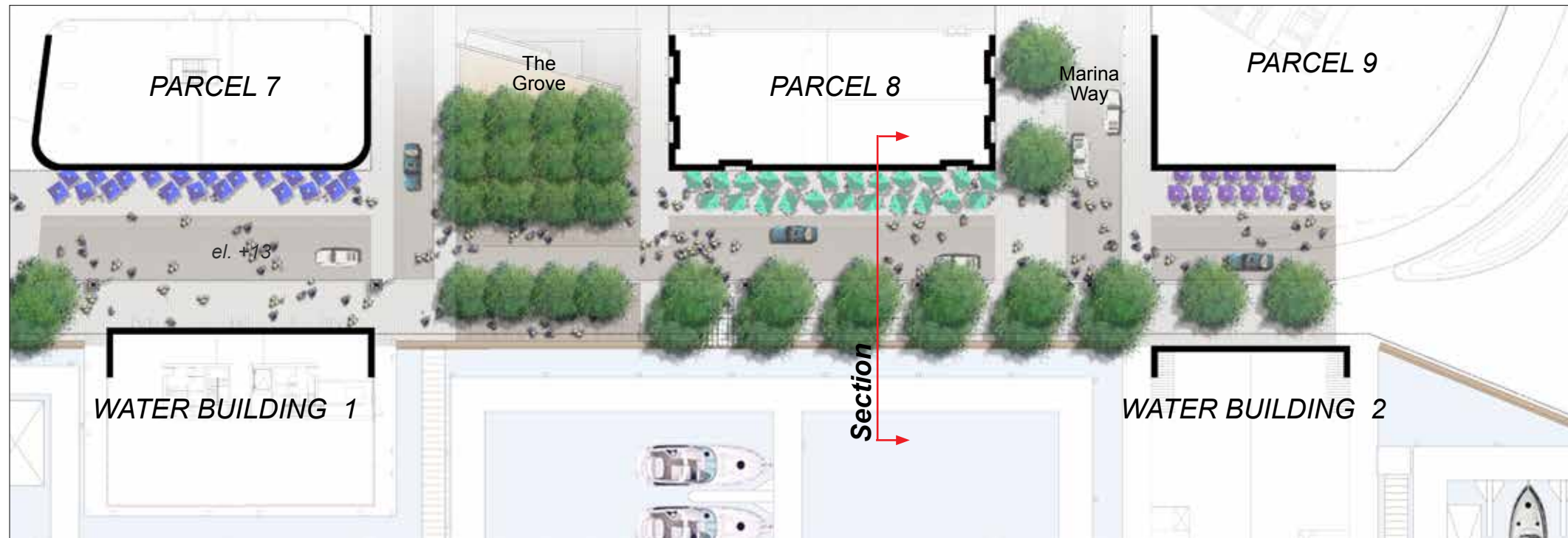
Wharf: Perspective View

STAGE TWO PUD SETDOWN SUBMISSION | MAY 12, 2017

DISTRICT
WHARF



Wharf Section



Wharf Plan: Parcel 8-9