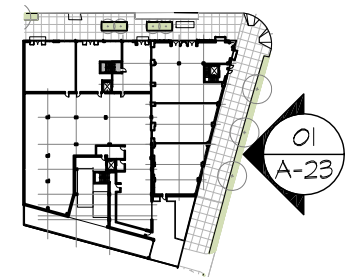


5/5/2017 11:09:24 AM



1 EAST ELEVATION  
SCALE: 1"=20'-0"

2 KEY PLAN  
SCALE: N.T.S.



# STRAND RESIDENCES

5127-5131 Nannie Helen Burroughs Ave., NE  
Washington, DC  
Square: 5196 Lot No: 0019, 0037, 0805, 0814



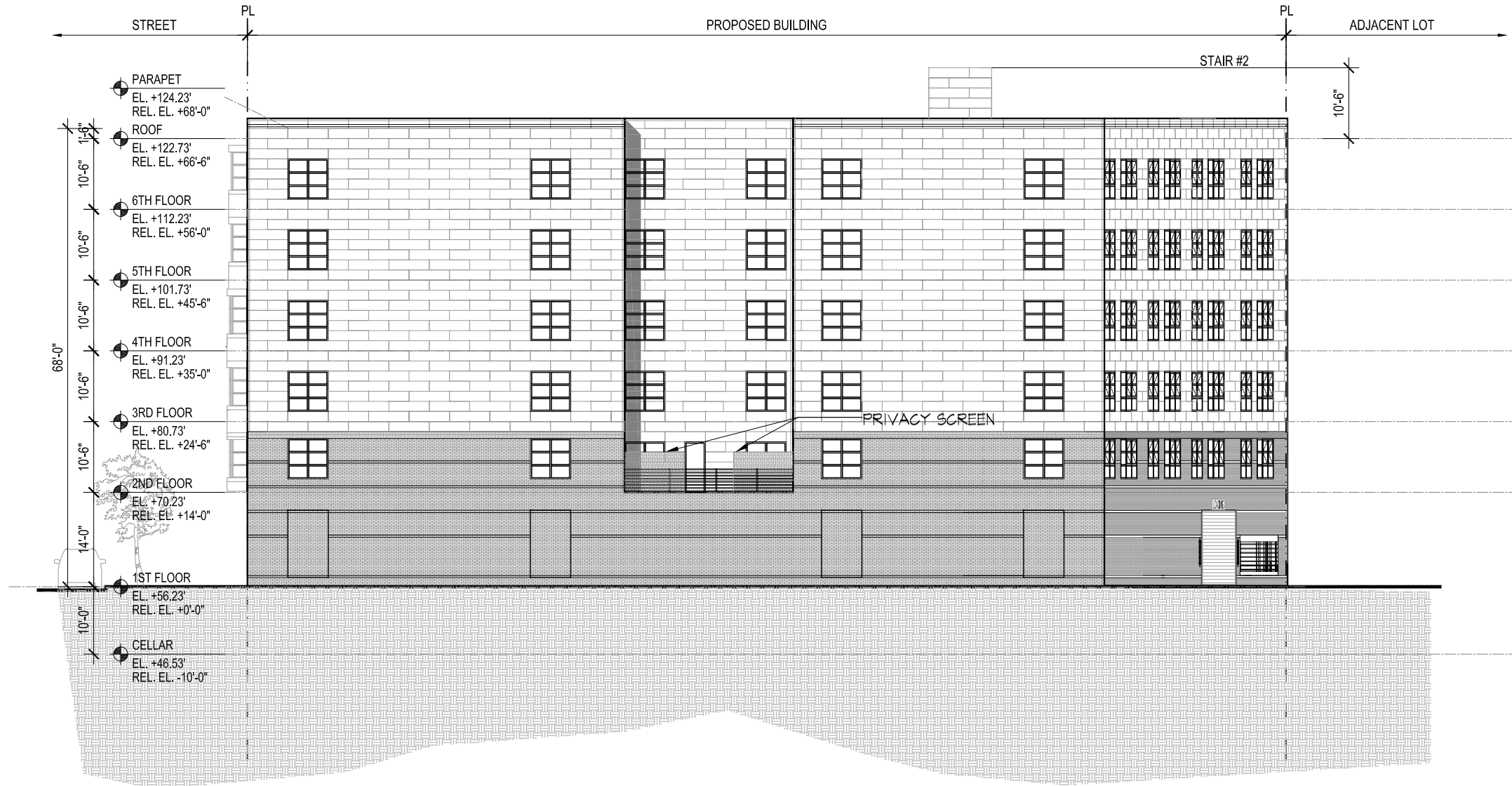
PGN Architects, PLLC  
210 7th Street SE - Suite 201  
Washington, DC 20003  
(P) 202-822-5995 (F) 202-822-0908

EAST ELEVATION | A-16

5/08/2017

ZONING COMMISSION  
District of Columbia  
CASE NO.17-10  
EXHIBIT NO.4A2

m:\14-0020\_strand\_residences\drawings\sheet\14-0020\_e\_23\_east\_elevation.dwg



1 WEST ELEVATION  
SCALE: 1"=20'-0"



2 KEY PLAN  
SCALE: N.T.S.

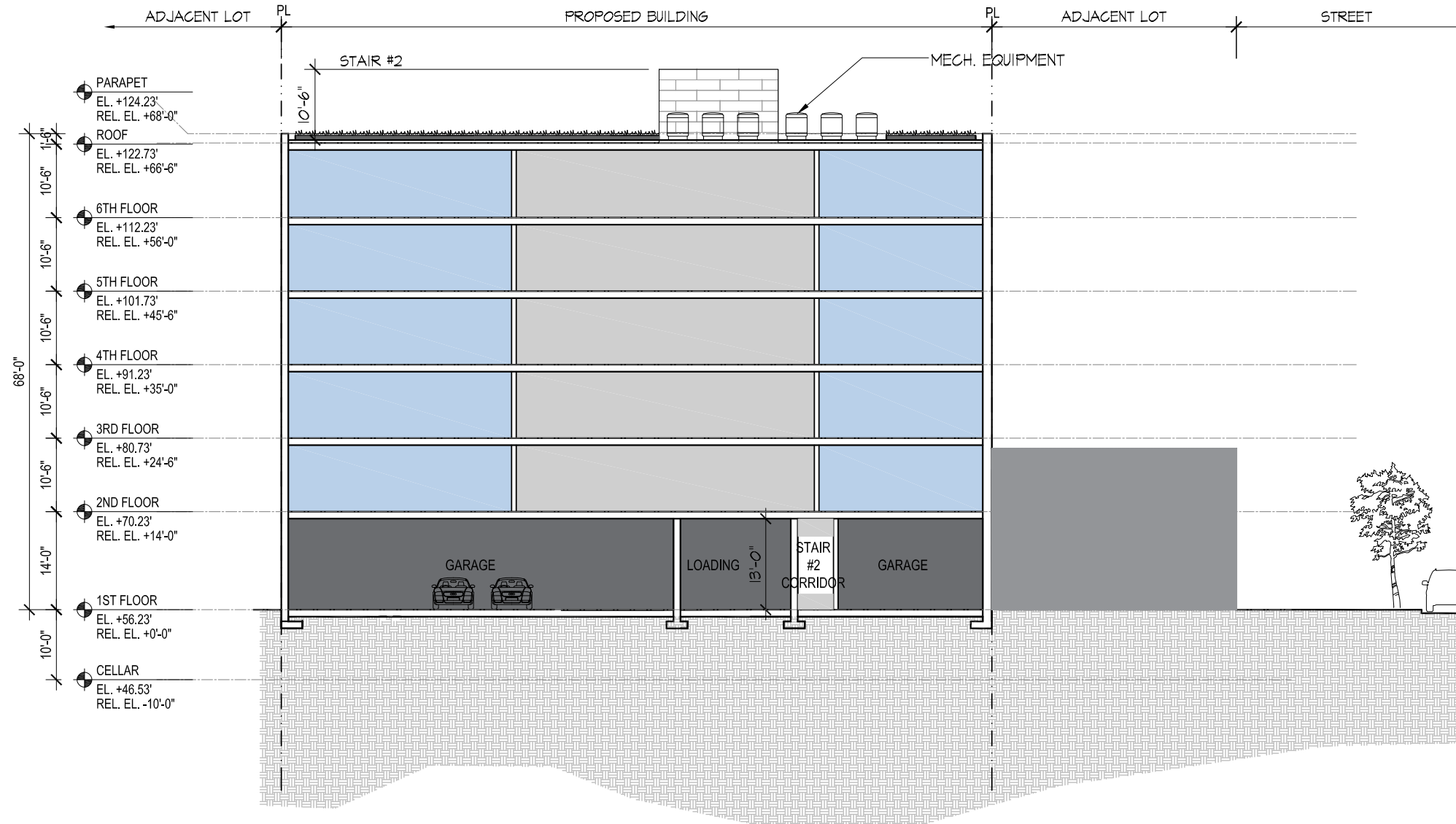


# STRAND RESIDENCES

5127-5131 Nannie Helen Burroughs Ave., NE  
Washington, DC  
Square: 5196 Lot No: 0019, 0037, 0805, 0814



PGN Architects, PLLC  
210 7th Street SE - Suite 201  
Washington, DC 20003  
(P) 202-822-5995 (F) 202-822-0908



1 BUILDING SECTION  
SCALE: 1"=20'-0"

- CORRIDOR
- CORE/PARKING
- RESIDENTIAL
- RETAIL



2 KEY PLAN  
SCALE: N.T.S.

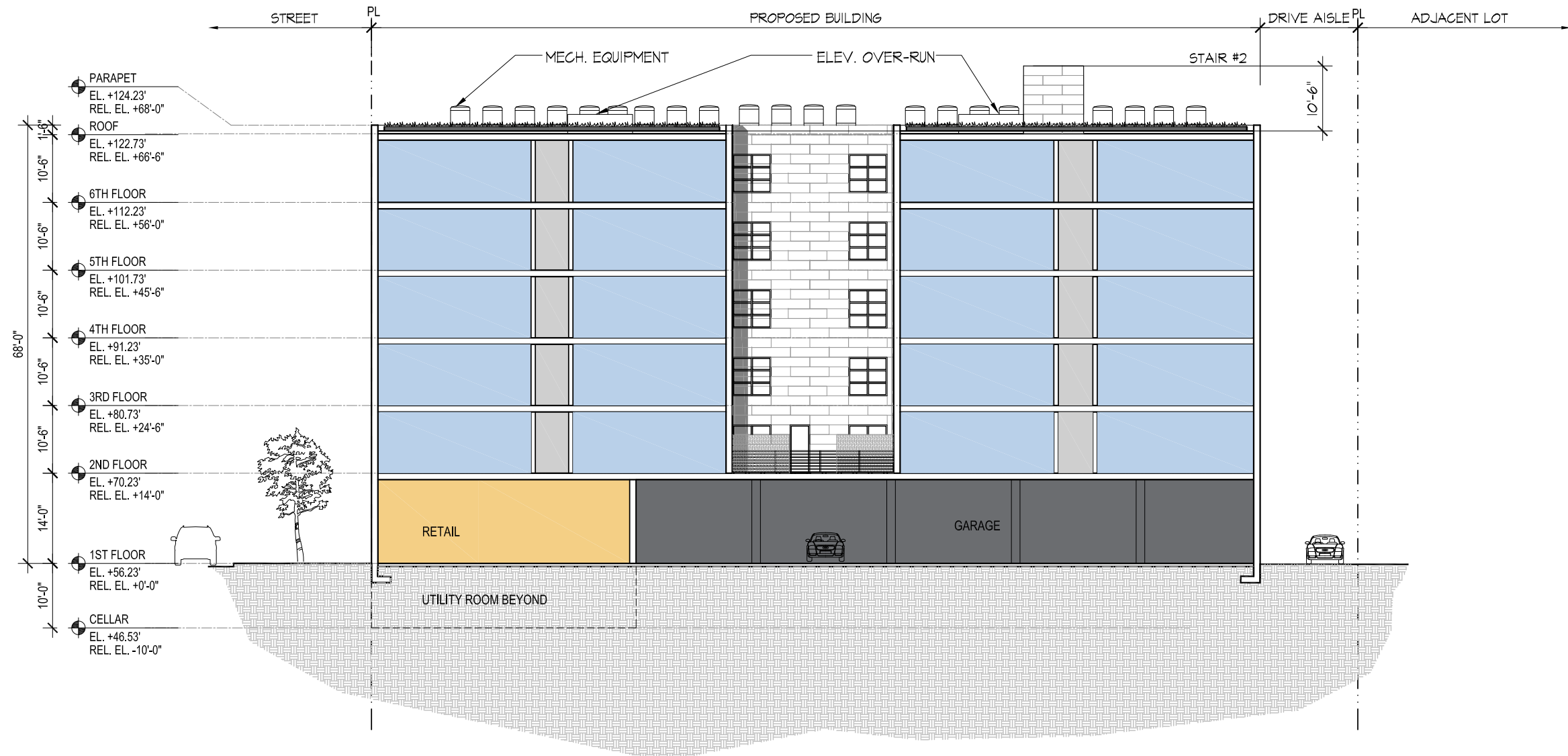


# STRAND RESIDENCES

5127-5131 Nannie Helen Burroughs Ave., NE  
Washington, DC  
Square: 5196 Lot No: 0019, 0037, 0805, 0814

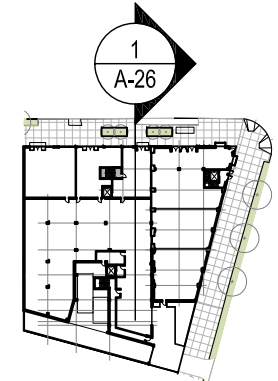


PGN Architects, PLLC  
210 7th Street SE - Suite 201  
Washington, DC 20003  
(P) 202-822-5995 (F) 202-822-0908



1 BUILDING SECTION  
SCALE: 1"=20'-0"

- CORRIDOR [grey square]
- CORE/PARKING [dark grey square]
- RESIDENTIAL [blue square]
- RETAIL [orange square]



2 KEY PLAN  
SCALE: N.T.S.



# STRAND RESIDENCES

5127-5131 Nannie Helen Burroughs Ave., NE  
 Washington, DC  
 Square: 5196 Lot No: 0019, 0037, 0805, 0814



PGN Architects, PLLC  
 210 7th Street SE - Suite 201  
 Washington, DC 20003  
 (P) 202-822-5995 (F) 202-822-0908