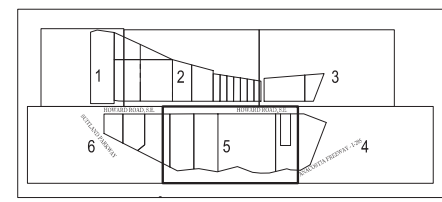


MATCH LINE SHEET 6

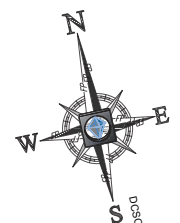
MATCH LINE SHEET 4

LEGEND

OH	OVERHEAD WIRES	123	EXISTING CONTOUR	⊙	TELEPHONE MANHOLE	●	BOLLARD	⚡	UTILITY POLE/LIGHT POLE
—	APPROX. LOC. UNDERGROUND GAS LINE PER UTILITY MARKOUT	x 123.45	EXISTING SPOT ELEVATION	⊙	ELECTRIC MANHOLE	—	U-BOLLARD	—	GLY WIRE
—	APPROX. LOC. UNDERGROUND WATER LINE PER UTILITY MARKOUT	x TC 123.45	EXIST. TOP OF CURB ELEVATION	⊙	WATER MANHOLE	—	METAL GUARDRAIL	—	TRAFFIC SIGNAL POLE
—	APPROX. LOC. UNDERGROUND TEL. LINE PER UTILITY MARKOUT	x G 123.45	EXIST. GUTTER ELEVATION	⊙	STORM DRAIN MANHOLE	—	BENCHMARK	—	TREE LINE
—	APPROX. LOC. UNDERGROUND ELEC. LINE PER UTILITY MARKOUT		UTILITY POLE	⊙	WATER METER	—	FENCE	—	TREE (SIZE AS NOTED)
—	APPROX. LOC. UNDERGROUND WATER LINE PER REF. #1		TRAFFIC SIGNAL	⊙	GAS METER	—	LANDSCAPED AREA		
—	APPROX. LOC. UNDERGROUND ELEC. LINE PER REF. #3		MONITORING WELL	⊙	SIGN	—	BORING LOCATION		
—	APPROX. LOC. UNDERGROUND SEWER LINE PER REF. #2 & 3		ELECTRIC METER	⊙	CLEAN OUT	—	AREA LIGHT		
—	APPROX. LOC. UNDERGROUND STORM LINE PER REF. #2 & 3		ELECTRIC BOX	⊙	HYDRANT	—	PAINTED ARROWS		
—	APPROX. LOC. FLOOD PLAN		SANITARY MANHOLE	⊙	WATER VALVE	—	STORM & SANITARY STRUCTURE ID NUMBER		
					GAS VALVE				



KEY MAP SCALE: 1" = 400'



BOUNDARY & TOPOGRAPHIC SURVEY
REDBRICK - POPLAR POINT
 A&T LOTS 937, 969, 971, 982, 986, 988, 1020, 1025-1031, 1036& 1037 SQUARE 5860
 A&T LOTS 951 & 957 SQUARE 5861, LOTS 79, 82-86 SQUARE 5861
 631-821 600-892 HOWARD ROAD, S.E.
 WASHINGTON, DISTRICT OF COLUMBIA

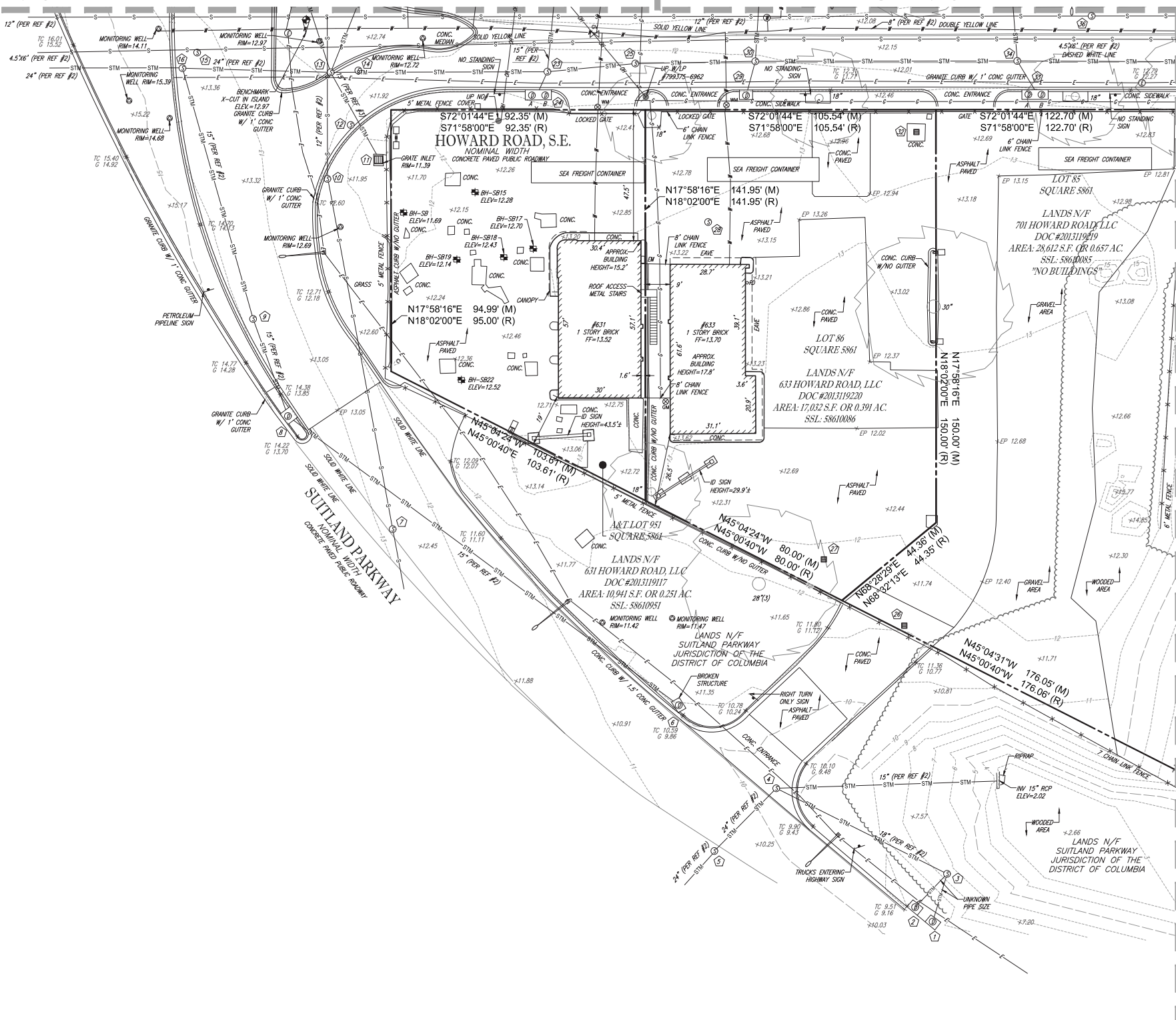
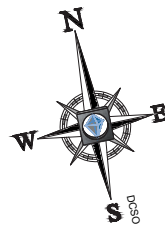
FILE NO. SRW152035
 DATE 06/03/2016
 FIELD DATE 04/27/2016

2808 DAVIS DRIVE, SUITE 250
 STERLING, VIRGINIA 20164
 703.706.0000 - FAX 703.706.0144
 www.bohlerengineering.com

BOHLER ENGINEERING

ROBERT C. HARR, JR. DATE
 DISTRICT OF COLUMBIA LICENSED LAND SURVEYOR NO. 906059

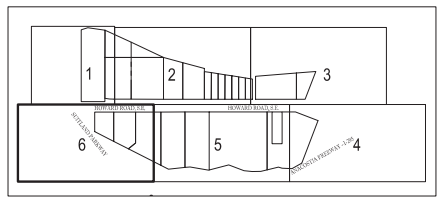
CREW CHIEF J.W. - S.E.
 DRAWN C.R.
 REVIEWED J.E.B.
 APPROVED J.S.F.
 SCALE 1" = 20'
 DWG. NO. 5 OF 6



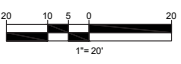
MATCH LINE SHEET 5

LEGEND

	OVERHEAD WIRES		EXISTING CONTOUR		TELEPHONE MANHOLE		UTILITY POLE/LIGHT POLE
	APPROX. LOC. UNDERGROUND GAS LINE PER UTILITY MARKOUT		EXISTING SPOT ELEVATION		ELECTRIC MANHOLE		GUY WIRE
	APPROX. LOC. UNDERGROUND WATER LINE PER UTILITY MARKOUT		EXIST. TOP OF CURB ELEVATION		WATER MANHOLE		TRAFFIC SIGNAL POLE
	APPROX. LOC. UNDERGROUND TEL. LINE PER UTILITY MARKOUT		EXIST. GUTTER ELEVATION		STORM DRAIN MANHOLE		TREE LINE
	APPROX. LOC. UNDERGROUND ELEC. LINE PER UTILITY MARKOUT		UTILITY POLE		WATER METER		TREE (SIZE AS NOTED)
	APPROX. LOC. UNDERGROUND WATER LINE PER REF. #1		TRAFFIC SIGNAL		GAS METER		SIGN
	APPROX. LOC. UNDERGROUND ELEC. LINE PER REF. #3		MONITORING WELL		CLEAN OUT		HYDRANT
	APPROX. LOC. UNDERGROUND SEWER LINE PER REF. #2 & 3		ELECTRIC METER		WATER VALVE		GAS VALVE
	APPROX. LOC. UNDERGROUND STORM LINE PER REF. #2 & 3		ELECTRIC BOX		SANITARY MANHOLE		
	APPROX. LOC. FLOOD PLAIN						



KEY MAP SCALE: 1" = 400'



BOUNDARY & TOPOGRAPHIC SURVEY
REDBRICK - POPLAR POINT
 A&T LOTS 937, 969, 971, 982, 986, 988, 1020, 1025-1031, 1036& 1037 SQUARE 5860
 A&T LOTS 951 & 957 SQUARE 5861, LOTS 79, 82-86 SQUARE 5861
 631-821 600-692 HOWARD ROAD, S.E.
 WASHINGTON, DISTRICT OF COLUMBIA

FILE NO. SRW152035
 DATE 06/03/2016
 FIELD DATE 04/27/2016

22939 DAVIS DRIVE, SUITE 209
 STERLING, VIRGINIA 20164
 703.706.9500 • 703.706.9501 FAX
 www.bohler-engineering.com

BOHLER ENGINEERING

ROBERT C. HARR, JR. DATE
 DISTRICT OF COLUMBIA LICENSED LAND SURVEYOR NO. 906059

CREW CHIEF	DRAWN	REVIEWED	APPROVED	SCALE	DWG. NO.
J.W. - S.E.	C.R.	J.E.B.	J.S.F.	1" = 20'	6 OF 6

