

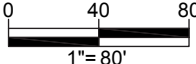
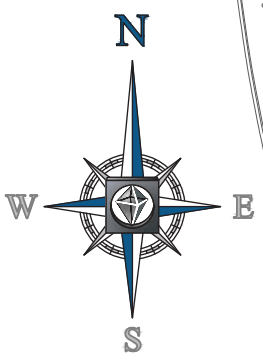
EROSION AND SEDIMENT CONTROL LEGEND		
TITLE	KEY	SYMBOL
SAFETY FENCE	SAF	
SILT FENCE	SF	
CURB INLET PROTECTION	CIP	
STABILIZED CONSTRUCTION ENTRANCE	SCE	
LIMIT OF DISTURBANCE	LOD	


EROSION & SEDIMENT CONTROL NARRATIVE

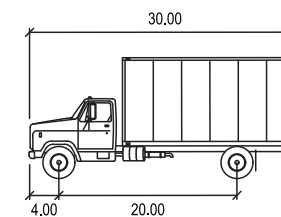
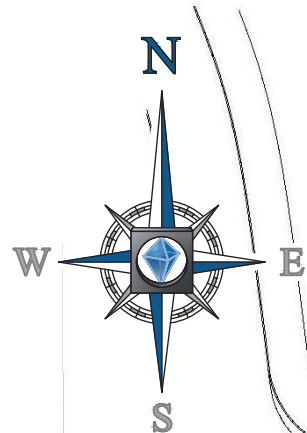
EROSION AND SEDIMENT CONTROL AND RUNOFF PROTECTION SHALL BE PROVIDED THROUGH DOEE APPROVED PRACTICES DURING ALL PHASES OF CONSTRUCTION. IT IS ANTICIPATED AT THIS TIME THAT EXISTING DRAINAGE DIVIDES SHALL BE UTILIZED FOLLOWING DEMOLITION OF EXISTING SITE FEATURES. SAFETY FENCE, SILT FENCE, CURB INLET PROTECTION AND STABILIZED CONSTRUCTION ENTRANCE SHALL BE USED TO MITIGATE SEDIMENT LADEN RUNOFF FROM LEAVING THE SITE. IT IS ANTICIPATED THAT DETAILS OF THIS PLAN SHALL BE DESIGNED AS CONSTRUCTION PHASING FOR THIS PROJECT IS FINALIZED.

DISTURBANCE ANALYSIS

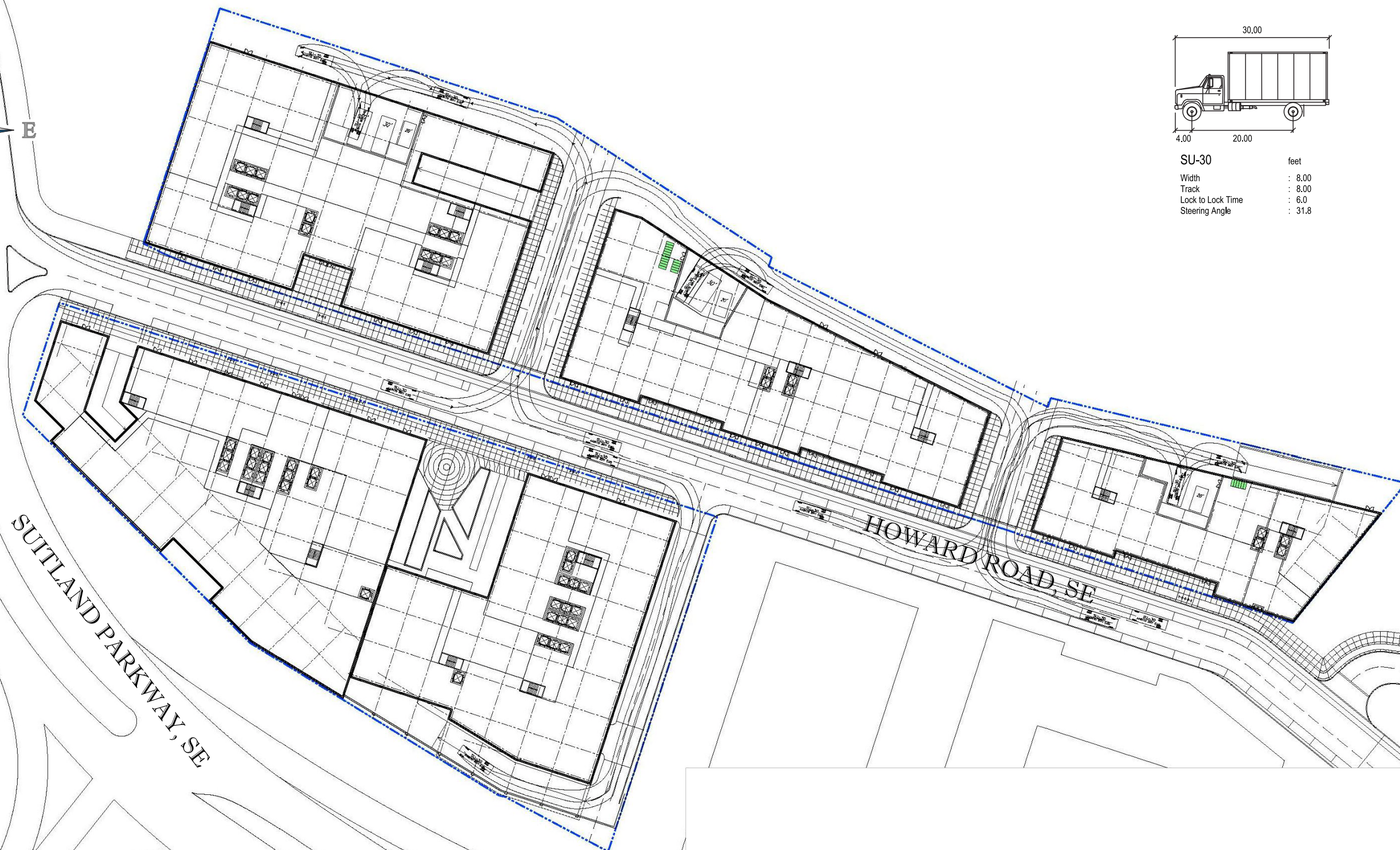
SITE AREA: 290,530 S.F. OR 6.67 AC
 DISTURBED AREA: 306,550 S.F. OR 7.04 AC



PROJECT NAME: POPLAR POINT PUD		SHEET TITLE: EROSION AND SEDIMENT CONTROL	
 BOHLER DC <small>1331 PENNSYLVANIA AVE., NW, STE. 1250 WASHINGTON, DC 20004 PHONE: (202) 524-5700 FAX: (202) 524-5701</small>		SHEET C6	
		SCALE: 1" = 80'	DATE: 12/09/16



SU-30 feet
 Width : 8.00
 Track : 8.00
 Lock to Lock Time : 6.0
 Steering Angle : 31.8



PROJECT NAME: **POPLAR POINT PUD**

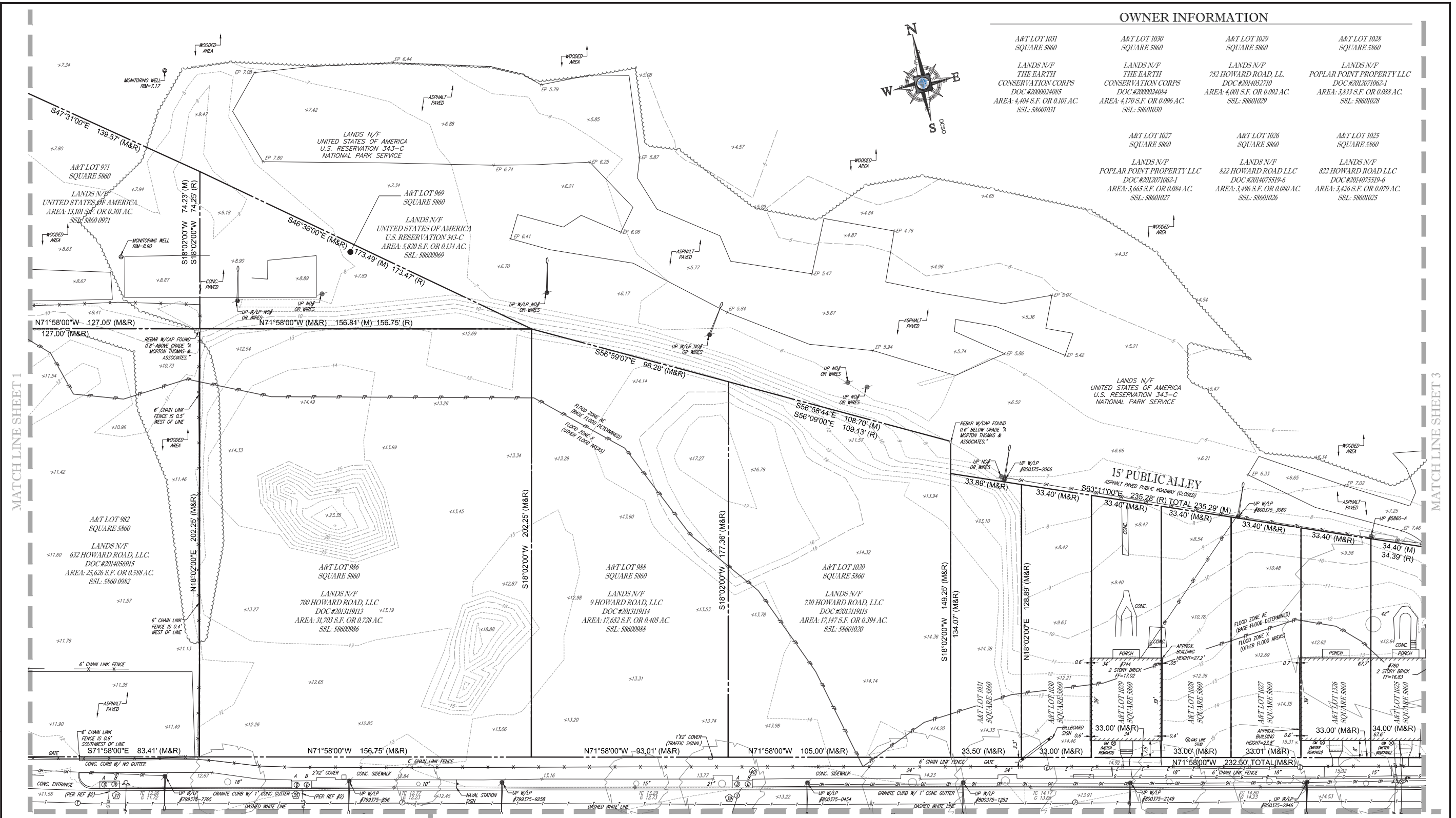


BOHLER
DC

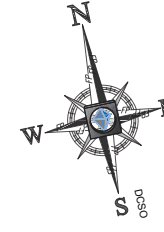
1331 PENNSYLVANIA AVE., NW, STE. 1250 WASHINGTON, DC 20004
 PHONE: (202) 524-5700 FAX: (202) 524-5701

SHEET TITLE: **TRUCK TURN**
SHEET C7

SCALE: --	DATE: 12/09/16	CAD ID: SS1	PROJECT NUMBER: DC152035
-----------	----------------	-------------	--------------------------



OWNER INFORMATION			
A&T LOT 1031 SQUARE 5860	A&T LOT 1030 SQUARE 5860	A&T LOT 1029 SQUARE 5860	A&T LOT 1028 SQUARE 5860
LANDS N/F THE EARTH CONSERVATION CORPS DOC #2000024085 AREA: 4,404 S.F. OR 0.101 AC. SSL: 58601031	LANDS N/F THE EARTH CONSERVATION CORPS DOC #2000024084 AREA: 4,170 S.F. OR 0.096 AC. SSL: 58601030	LANDS N/F 752 HOWARD ROAD, LL DOC #2014052710 AREA: 4,001 S.F. OR 0.092 AC. SSL: 58601029	LANDS N/F POPLAR POINT PROPERTY LLC DOC #2012071062-1 AREA: 3,833 S.F. OR 0.088 AC. SSL: 58601028
A&T LOT 1027 SQUARE 5860	A&T LOT 1026 SQUARE 5860	A&T LOT 1025 SQUARE 5860	
LANDS N/F POPLAR POINT PROPERTY LLC DOC #2012071062-1 AREA: 3,665 S.F. OR 0.084 AC. SSL: 58601027	LANDS N/F 822 HOWARD ROAD LLC DOC #2014075519-6 AREA: 3,496 S.F. OR 0.080 AC. SSL: 58601026	LANDS N/F 822 HOWARD ROAD LLC DOC #2014075519-6 AREA: 3,426 S.F. OR 0.079 AC. SSL: 58601025	



MATCH LINE SHEET 1

MATCH LINE SHEET 3

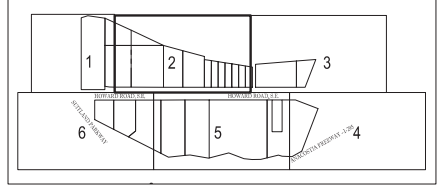
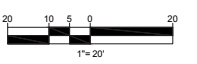
MATCH LINE SHEET 6

MATCH LINE SHEET 5

OH	OVERHEAD WIRES	123	EXISTING CONTOUR
---	APPROX. LOC. UNDERGROUND GAS LINE PER UTILITY MARKOUT	x 123.45	EXISTING SPOT ELEVATION
---	APPROX. LOC. UNDERGROUND WATER LINE PER UTILITY MARKOUT	x TC 123.45	EXIST. TOP OF CURB ELEVATION
---	APPROX. LOC. UNDERGROUND TEL. LINE PER UTILITY MARKOUT	x G 122.95	EXIST. GUTTER ELEVATION
---	APPROX. LOC. UNDERGROUND ELEC. LINE PER UTILITY MARKOUT		UTILITY POLE
---	APPROX. LOC. UNDERGROUND WATER LINE PER REF. #1		TRAFFIC SIGNAL
---	APPROX. LOC. UNDERGROUND ELEC. LINE PER REF. #1		MONITORING WELL
---	APPROX. LOC. UNDERGROUND SEWER LINE PER REF. #2 & 3		ELECTRIC METER
---	APPROX. LOC. UNDERGROUND STORM LINE PER REF. #2 & 3		ELECTRIC BOX
---	APPROX. LOC. FLOOD PLAIN		SANITARY MANHOLE

⊙	TELEPHONE MANHOLE	⊙	UTILITY POLE/LIGHT POLE
⊙	ELECTRIC MANHOLE	⊙	GUY WIRE
⊙	WATER MANHOLE	⊙	TRAFFIC SIGNAL POLE
⊙	STORM DRAIN MANHOLE	⊙	TREE LINE
⊙	WATER METER	⊙	TREE (SIZE AS NOTED)
⊙	GAS METER		
⊙	SIGN		
⊙	CLEAN OUT		
⊙	HYDRANT		
⊙	WATER VALVE		
⊙	GAS VALVE		

⊙	BOLLARD	⊙	UTILITY POLE/LIGHT POLE
⊙	U-BOLLARD	⊙	GUY WIRE
⊙	METAL GUARDRAIL	⊙	TRAFFIC SIGNAL POLE
⊙	BENCHMARK	⊙	TREE LINE
⊙	FENCE	⊙	TREE (SIZE AS NOTED)
⊙	L.S.A.		
⊙	LANDSCAPED AREA		
⊙	BORING LOCATION		
⊙	AREA LIGHT		
⊙	PAINTED ARROWS		
⊙	STORM & SANITARY STRUCTURE ID NUMBER		



KEY MAP
SCALE: 1" = 400'

BOUNDARY & TOPOGRAPHIC SURVEY
REDBRICK - POPLAR SQUARE

A&T LOTS 971, 969, 971, 982, 986, 988, 1020, 1025-1031, 10368 1037 SQUARE 5860
A&T LOTS 951 & 957 SQUARE 5861, LOTS 79, 82-86 SQUARE 5861
631-821 600-692 HOWARD ROAD, S.E.
WASHINGTON, DISTRICT OF COLUMBIA

FILE NO. SRW152035	DATE 06/03/2016	FIELD DATE 04/27/2016	CREW CHIEF J.W. - S.E.	DRAWN C.R.	REVIEWED J.E.B.	APPROVED J.S.F.	SCALE 1" = 20'	DWG. NO. 2 OF 6
-----------------------	--------------------	--------------------------	---------------------------	---------------	--------------------	--------------------	-------------------	--------------------

2299 DAVIS DRIVE, SUITE 209
STERLING, VIRGINIA 20164
703.708.9500 - 703.709.9501 FAX
www.bohler-engineering.com