

Landscape Exhibits

THIS PAGE INTENTIONALLY LEFT BLANK



© 2016 Torti Gallas Urban, Inc. | 1326 H Street NE 2nd Floor Washington, DC 20002

LANDSCAPE SITE PLAN - STREET LEVEL

OCTOBER 24, 2016

L1



© 2016 Torti Gallas Urban, Inc. | 1326 H Street NE 2nd Floor Washington, DC 20002

LANDSCAPE SITE PLAN

OCTOBER 24, 2016

L2



© 2016 Torti Gallas Urban, Inc. | 1326 H Street NE 2nd Floor Washington, DC 20002

OCTOBER 24, 2016

YUMA STREET ENTRANCE LANDSCAPE PLAN

L3



© 2016 Torti Gallas Urban, Inc. | 1326 H Street NE 2nd Floor Washington, DC 20002

YUMA STREET ENTRANCE PERSPECTIVE SKETCH

OCTOBER 24, 2016

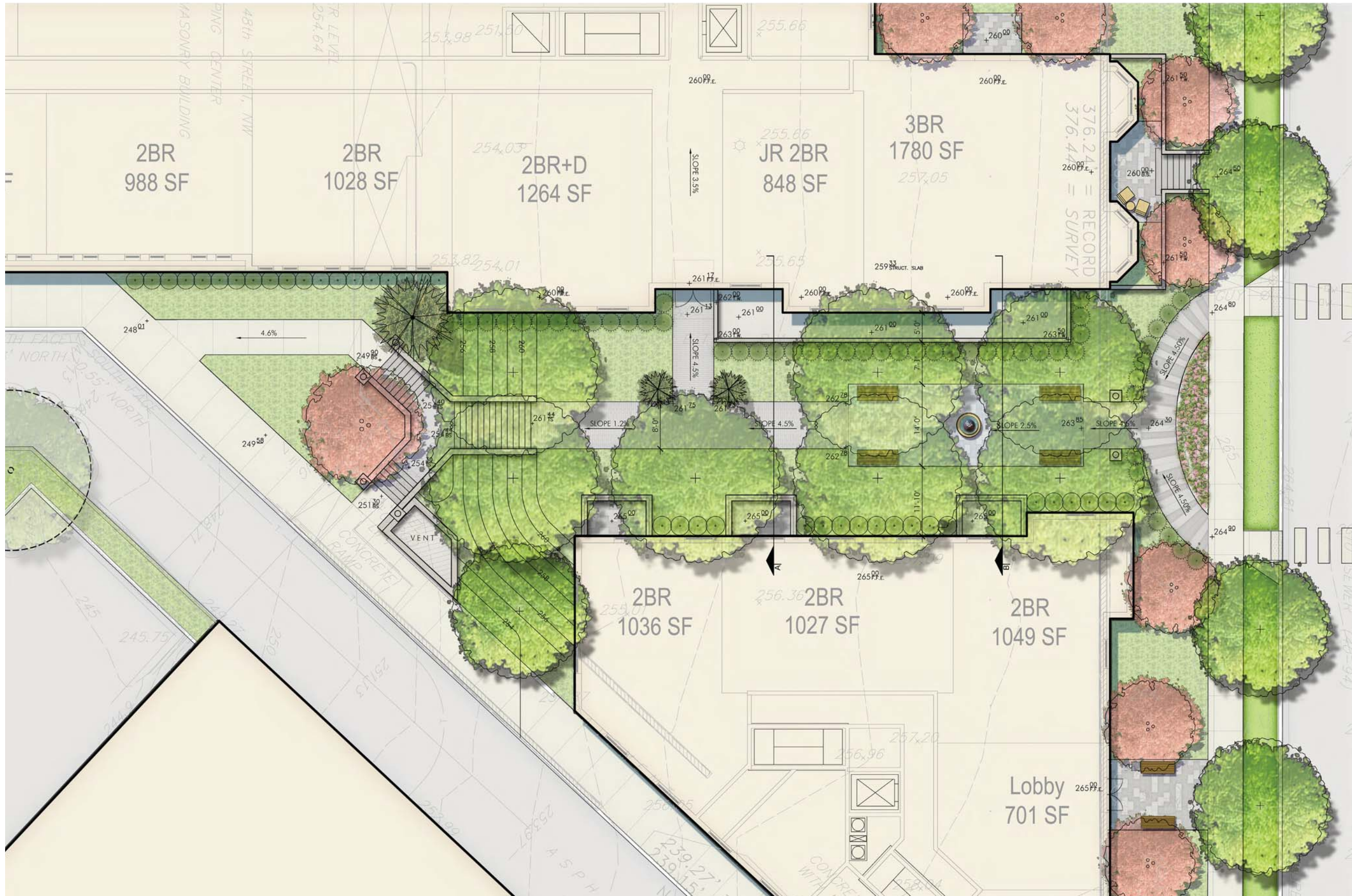
L4



VALOR DEVELOPMENT
TORTI GALLAS URBAN

PARKER RODRIGUEZ, INC.
Planning | Urban Design | Landscape Architecture

THE LADY BIRD



WINDOM WALK LANDSCAPE PLAN



© 2016 Torti Gallas Urban, Inc. | 1326 H Street NE 2nd Floor Washington, DC 20002

WINDOM WALK PERSPECTIVE SKETCH

OCTOBER 24, 2016

L6



VALOR DEVELOPMENT
TORTI GALLAS URBAN

PARKER RODRIGUEZ, INC.
Planning | Urban Design | Landscape Architecture

THE LADY BIRD





© 2016 Torti Gallas Urban, Inc. | 1326 H Street NE 2nd Floor Washington, DC 20002

WINDOM WALK CROSS SECTION B

OCTOBER 24, 2016

L8



VALOR DEVELOPMENT
TORTI GALLAS URBAN

PARKER RODRIGUEZ, INC.
Planning | Urban Design | Landscape Architecture

THE LADY BIRD



© 2016 Torti Gallas Urban, Inc. | 1326 H Street NE 2nd Floor Washington, DC 20002

OCTOBER 24, 2016

INTERIOR COURTYARD LANDSCAPE PLAN

L9



ROOF TERRACE LANDSCAPE PLAN



© 2016 Torti Gallas Urban, Inc. | 1326 H Street NE 2nd Floor Washington, DC 20002

MASS. AVE. ALLEY ENTRANCE LANDSCAPE PLAN

OCTOBER 24, 2016

L11



© 2016 Torti Gallas Urban, Inc. | 1326 H Street NE 2nd Floor Washington, DC 20002

MASS. AVE. ALLEY ENTRANCE PERSPECTIVE SKETCH

OCTOBER 24, 2016

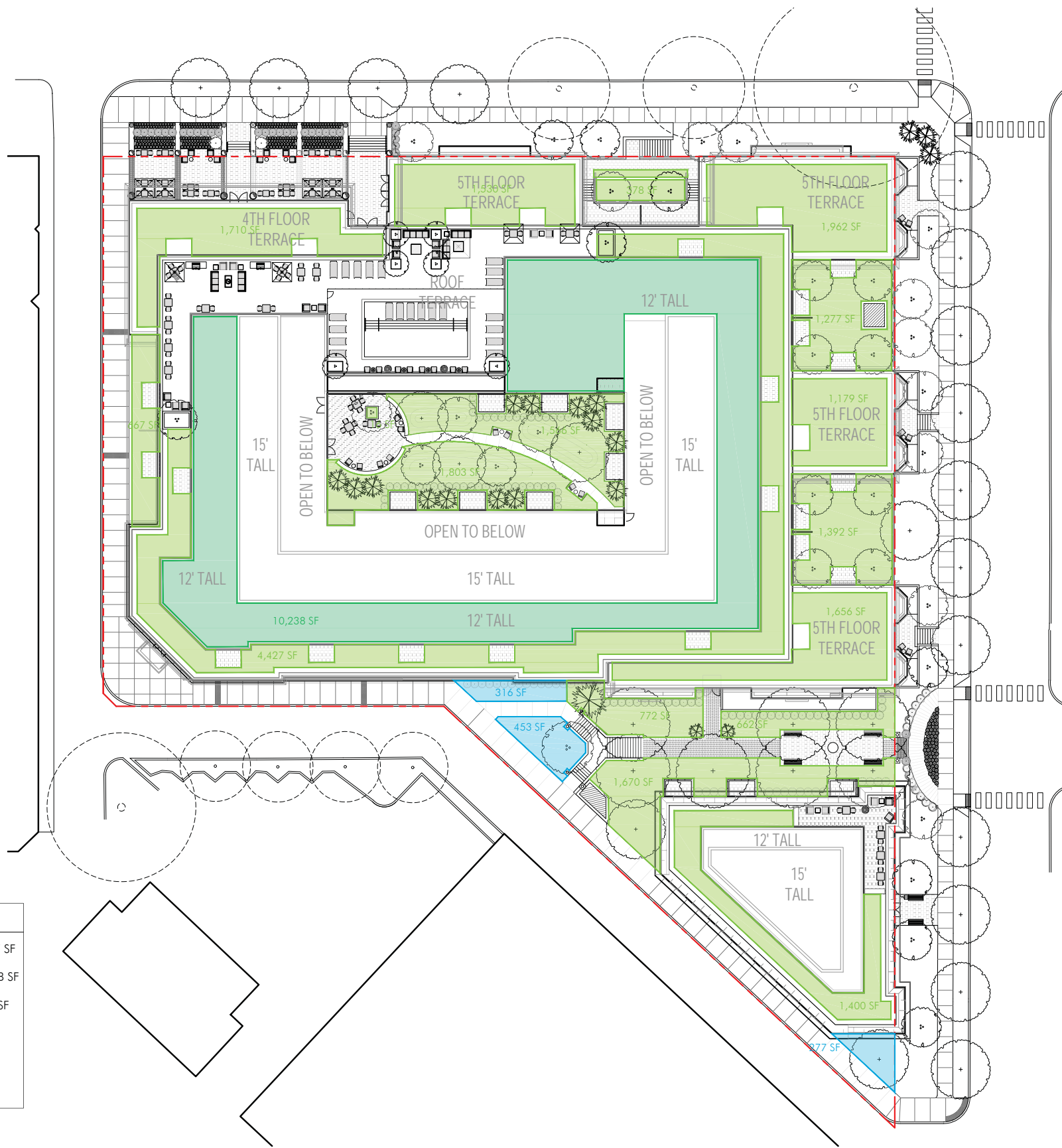
L12



VALOR DEVELOPMENT
TORTI GALLAS URBAN

PARKER RODRIGUEZ, INC.
Planning | Urban Design | Landscape Architecture

THE LADY BIRD



GAR CALCULATIONS - STREET LEVEL

- VEGETATED ROOF AREA (8" OR MORE) = 24,067 SF
- VEGETATED ROOF AREA (LESS THAN 8") = 10,328 SF
- LANDSCAPE AREA (24" OR MORE) AREA = 1,046 SF
- NEW TREE CANOPY (2.5"-6" DIA) = 30 TREES
- NEW PLANTS (2'-0" OR TALLER) = 200 SHRUBS

Green Area Ratio Scoresheet				
Address	Word	Lot	Square	Zoning District
4330 48th Street - Lady Bird				MU-4
Other / B2A Order	enter sq ft of lot	enter sq ft of lot	multipl	SCORE
Lot size (enter this value first) *	79,112			0.347
Landscape Elements				
	Square Ft.	Factor	Total	
A Landscaped areas (select one of the following for each area)				
1	Landscaped areas with a soil depth of less than 24"	enter sq ft	0.3	-
2	Landscaped areas with a soil depth of 24" or greater	enter sq ft	1,046	627.6
3	Bioretention facilities	enter sq ft	0	-
B Plantings (credit for plants in landscaped areas from Section A)				
1	Groundcovers, or other plants less than 2' tall at maturity	enter sq ft	0	-
2	Plants, not including grasses, 2' or taller at maturity - calculated at 9 sq ft per plant (typically planted no closer than 18" on center)	enter number of plants	200	540.0
3	Tree canopy for all new trees 2.5" to 6" diameter or equivalent - calculated at 50 sq ft per tree	enter number of trees	30	750.0
4	Tree canopy for new trees 6" diameter or larger or equivalent - calculated at 250 sq ft per tree	enter number of trees	0	-
5	Tree canopy for preservation of existing tree 6" to 12" diameter or larger or equivalent - calculated at 250 sq ft per tree	enter number of trees	0	-
6	Tree canopy for preservation of existing tree 12" to 18" diameter or larger or equivalent - calculated at 600 sq ft per tree	enter number of trees	0	-
7	Tree canopy for preservation of all existing trees 18" to 24" dia. or equivalent - calculated at 1300 sq ft per tree	enter number of trees	0	-
8	Tree canopy for preservation of all existing trees 24" diameter or larger or equivalent - calculated at 2000 sq ft per tree	enter number of trees	0	-
9	Vegetated wall, plantings on a vertical surface	enter sq ft	100	60.0
C Vegetated or "green" roofs				
1	Over at least 2" and less than 8" of growth medium	enter sq ft	10,328	6,196.8
2	Over at least 8" of growth medium	enter sq ft	24,067	19,253.6
D Permeable Paving***				
1	Permeable paving over at least 6" and less than 24" of soil or gravel	enter sq ft	0	-
2	Permeable paving over at least 24" of soil or gravel	enter sq ft	0	-
E Other				
1	Enhanced tree growth systems***	enter sq ft	0	-
2	Renewable energy generation	enter sq ft	0	-
3	Approved water features	enter sq ft	0	-
H Bonuses				
sub-total of sq ft = 38,842				
1	Native plant species	enter sq ft	0	-
2	Landscaping in food cultivation	enter sq ft	0	-
3	Harvested stormwater irrigation	enter sq ft	0	-
Green Area Ratio numerator =				27,428
*** Permeable paving and structural soil together may not qualify for more than one third of the Green Area Ratio score. Total square footage of all permeable paving and enhanced tree growth				

THIS PAGE INTENTIONALLY LEFT BLANK