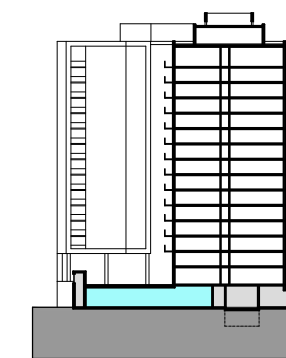
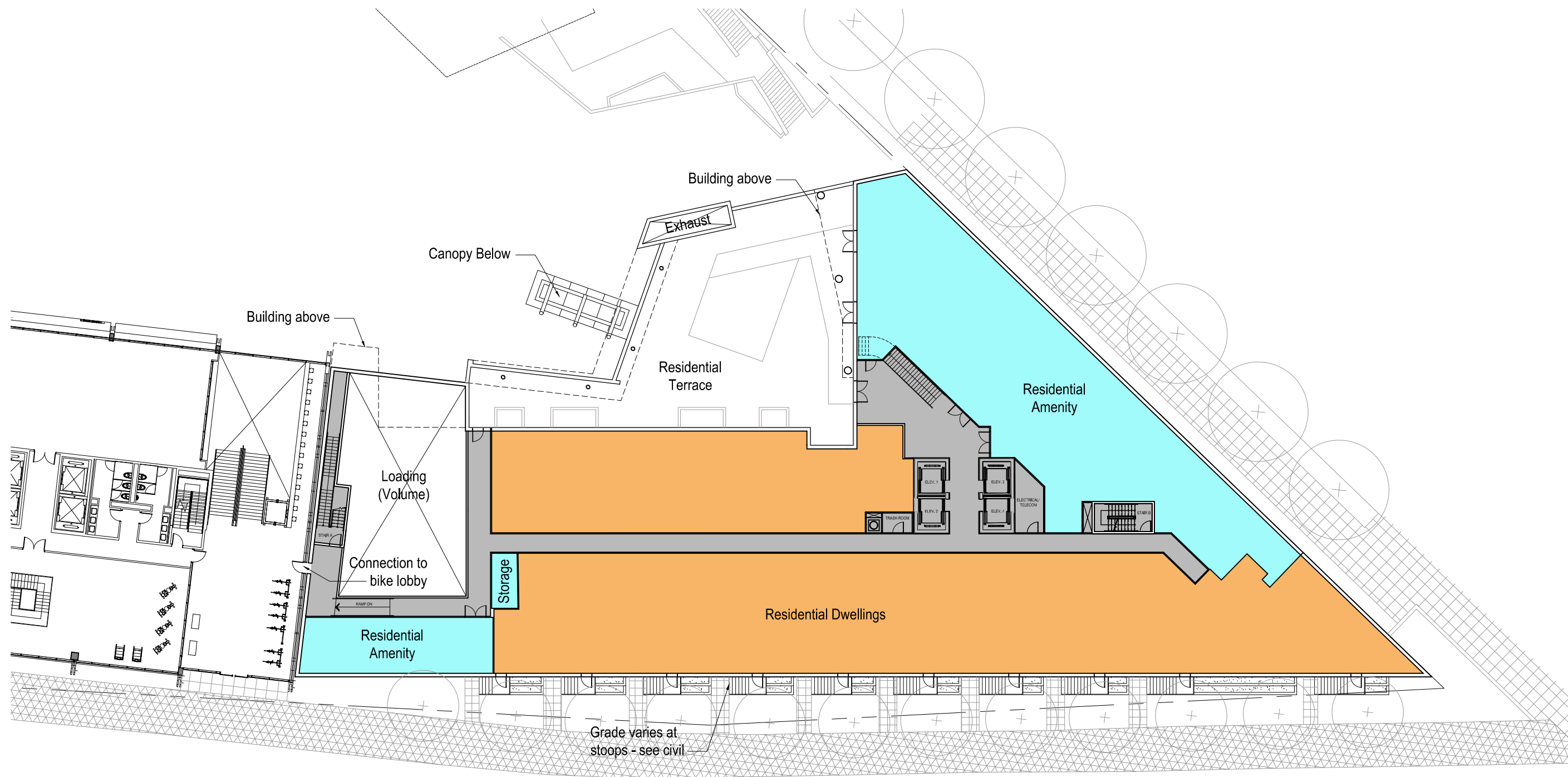


- Notes:
1. The interior layout shown of the building is schematic. Changes to the layouts, not affecting the street facade's exterior envelope or the square footage distribution, may occur.
 2. Refer to A-200 sheets for information on the South Tower.
 3. Refer to A-308 for building dimensions and setbacks.
 4. Loading berth shall have a minimum vertical clearance of 14 feet. The door and access way to loading berth shall have sufficient clearance for use by 13 foot, 6 inch truck.
 5. Refer to landscape drawings for more information on streetscape and plaza design.



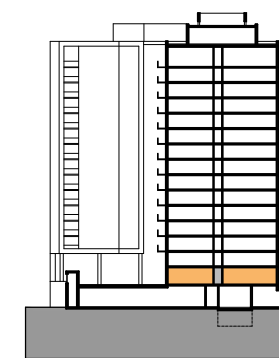
KEY SECTION





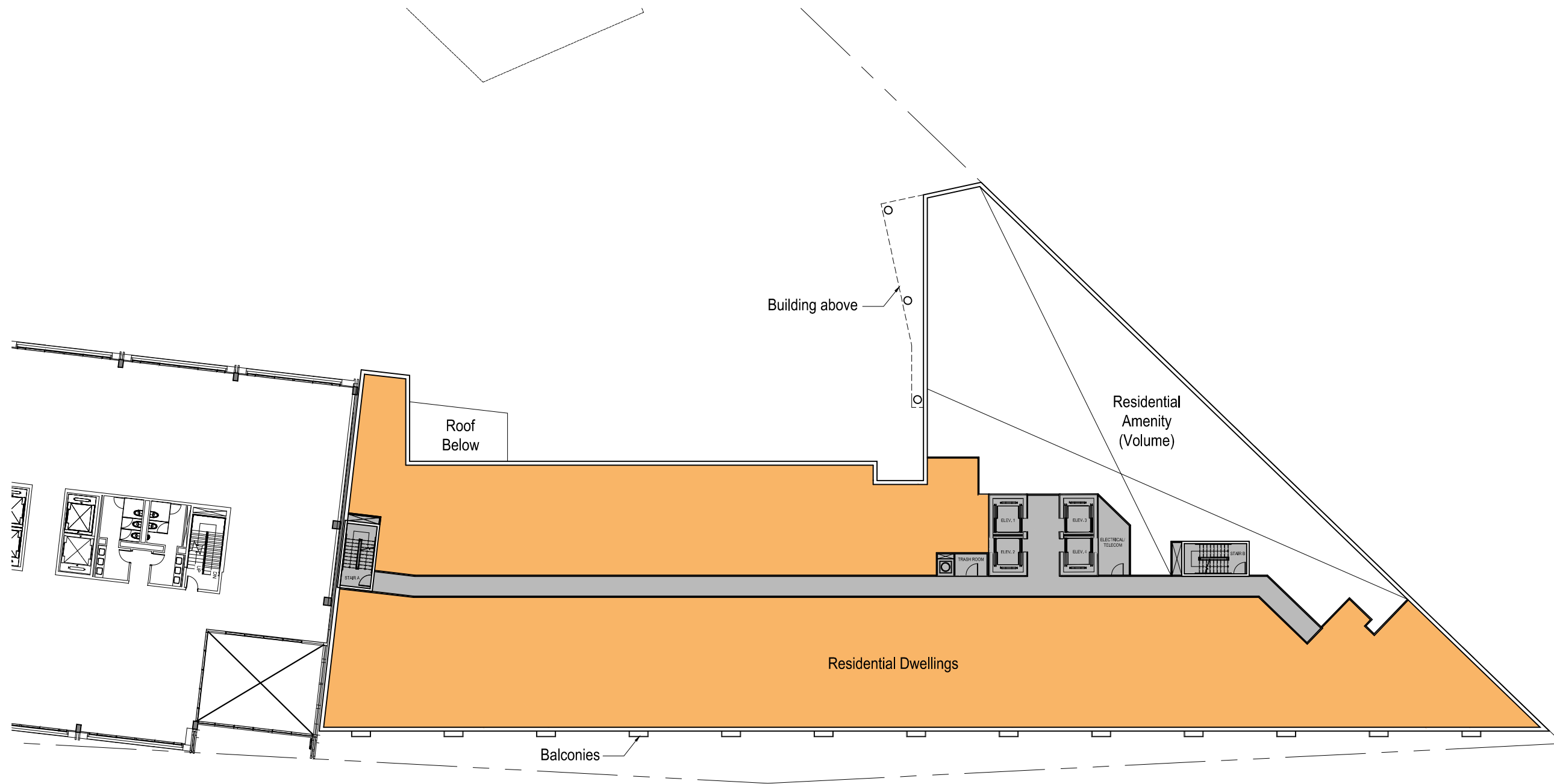
Notes:

1. The interior layout shown of the building is schematic. Changes to the layouts, not affecting the street facade's exterior envelope or the square footage distribution, may occur.
2. Refer to A-200 sheets for information on the South Tower.
3. Refer to A-308 for building dimensions and setbacks.
4. Refer to landscape drawings for more information on terrace design.



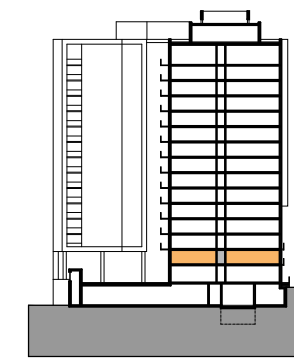
KEY SECTION



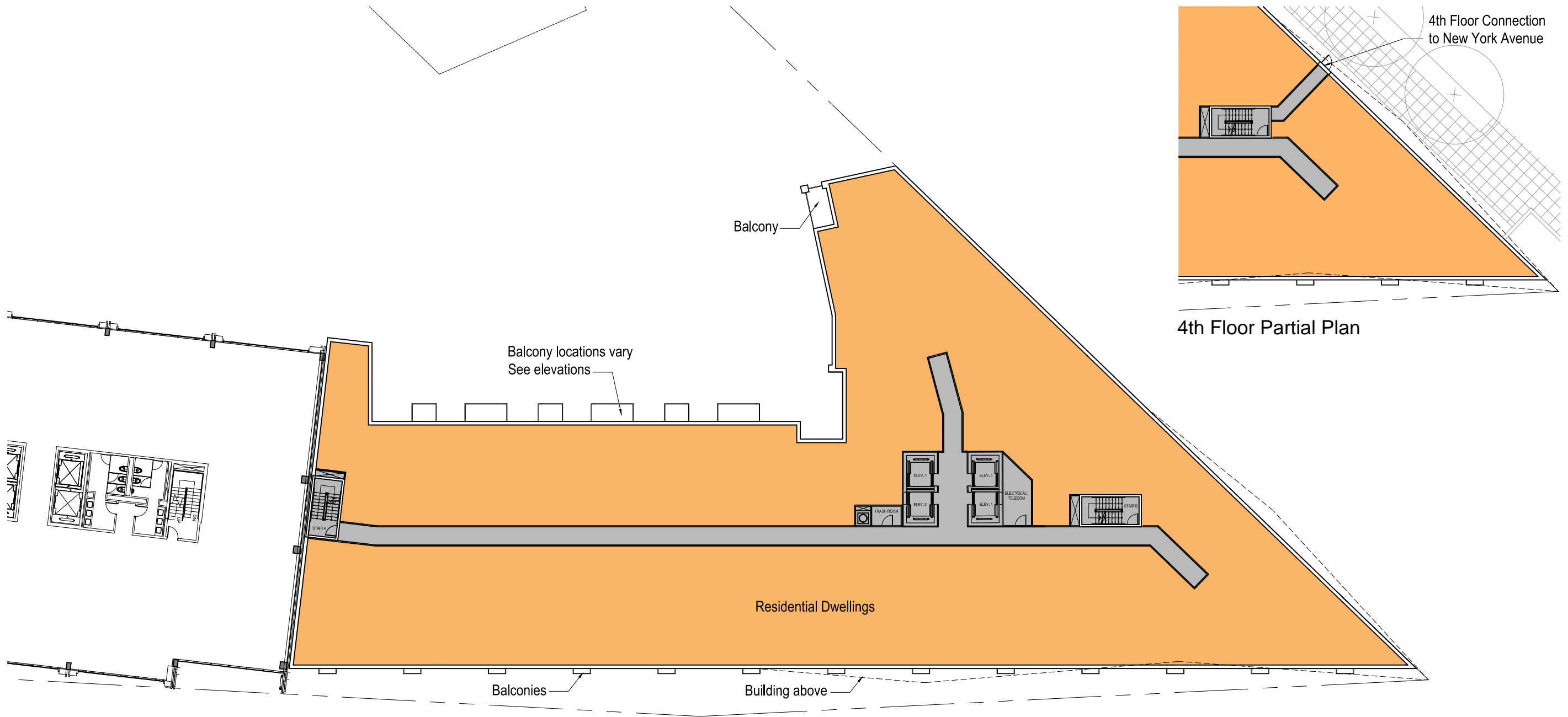


Notes:

1. The interior layout shown of the building is schematic. Changes to the layouts, not affecting the street facade's exterior envelope or the square footage distribution, may occur.
2. Refer to A-200 sheets for information on the South Tower.
3. Refer to A-308 for building dimensions and setbacks.

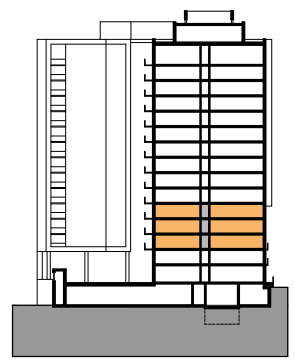


KEY SECTION



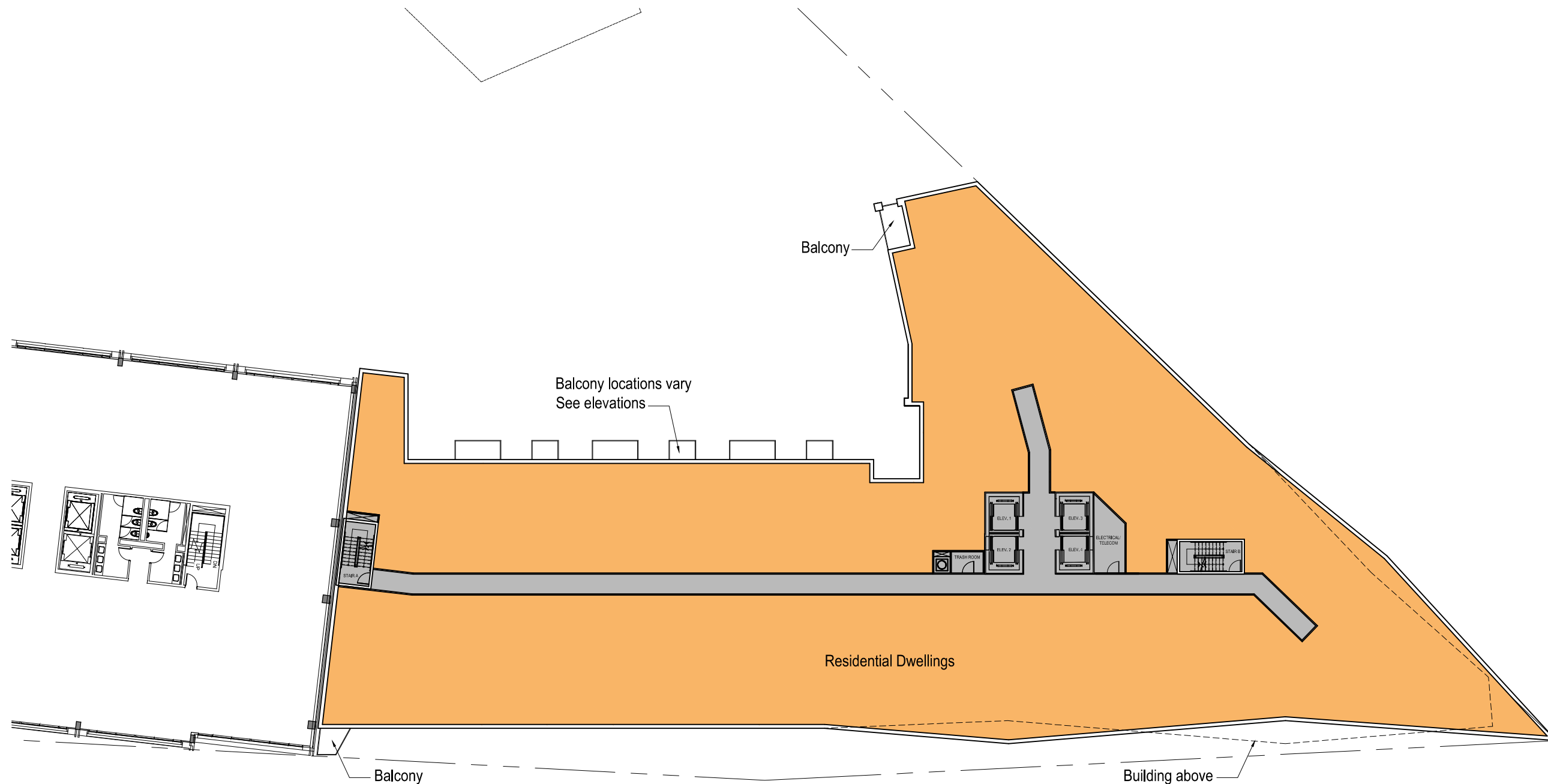
Notes:

1. The interior layout shown of the building is schematic. Changes to the layouts, not affecting the street facade's exterior envelope or the square footage distribution, may occur.
2. Refer to A-200 sheets for information on the South Tower.
3. Refer to A-308 for building dimensions and setbacks.



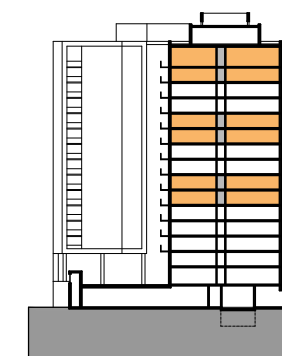
KEY SECTION





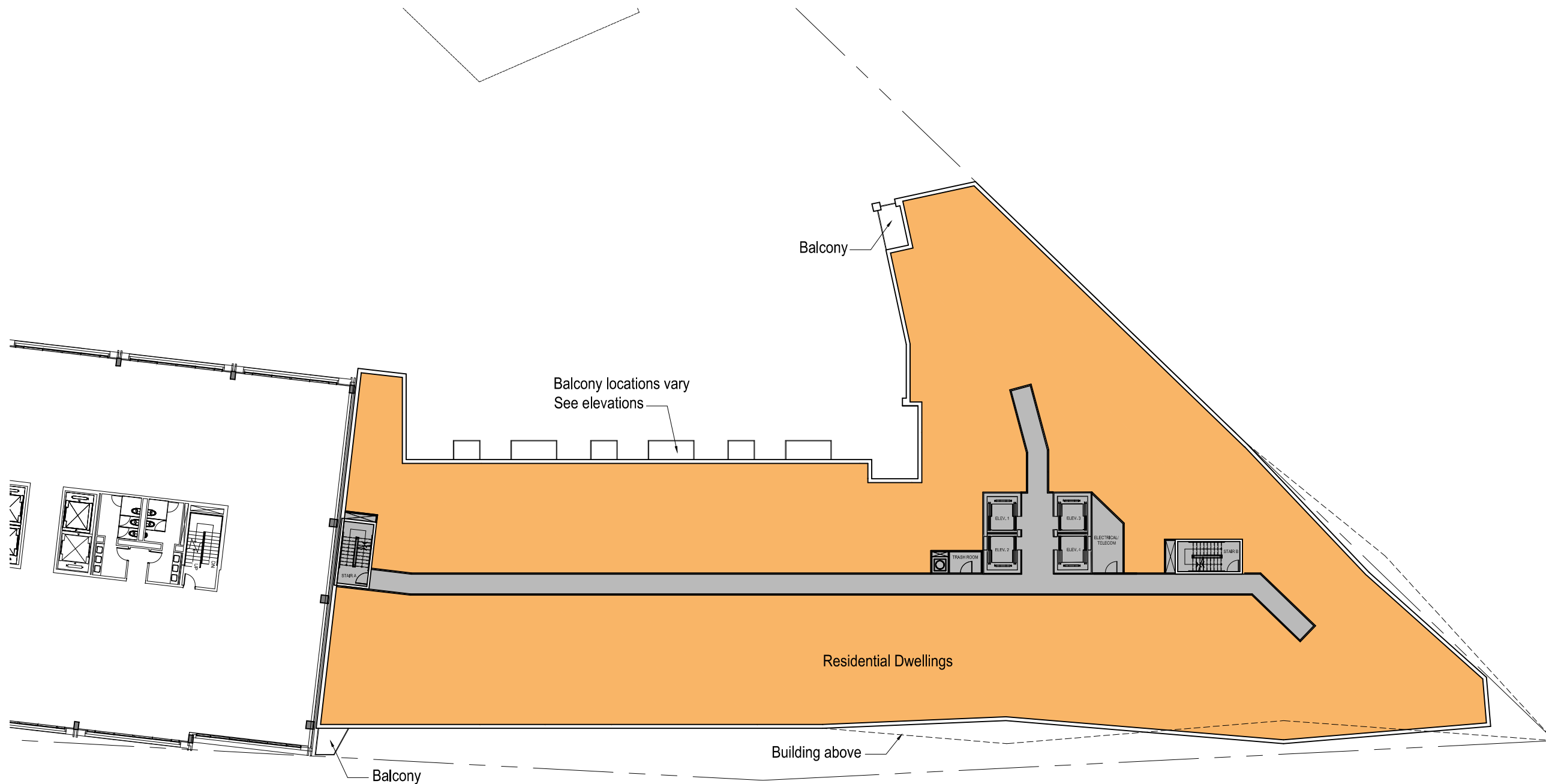
Notes:

1. The interior layout shown of the building is schematic. Changes to the layouts, not affecting the street facade's exterior envelope or the square footage distribution, may occur.
2. Refer to A-200 sheets for information on the South Tower.
3. Refer to A-308 for building dimensions and setbacks.



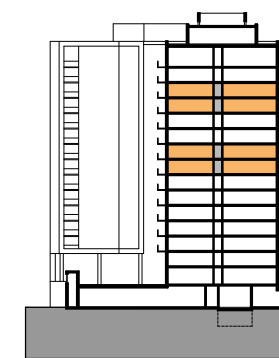
KEY SECTION





Notes:

1. The interior layout shown of the building is schematic. Changes to the layouts, not affecting the street facade's exterior envelope or the square footage distribution, may occur.
2. Refer to A-200 sheets for information on the South Tower.
3. Refer to A-308 for building dimensions and setbacks.



KEY SECTION

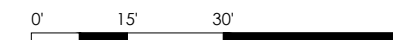
MRP | REALTY

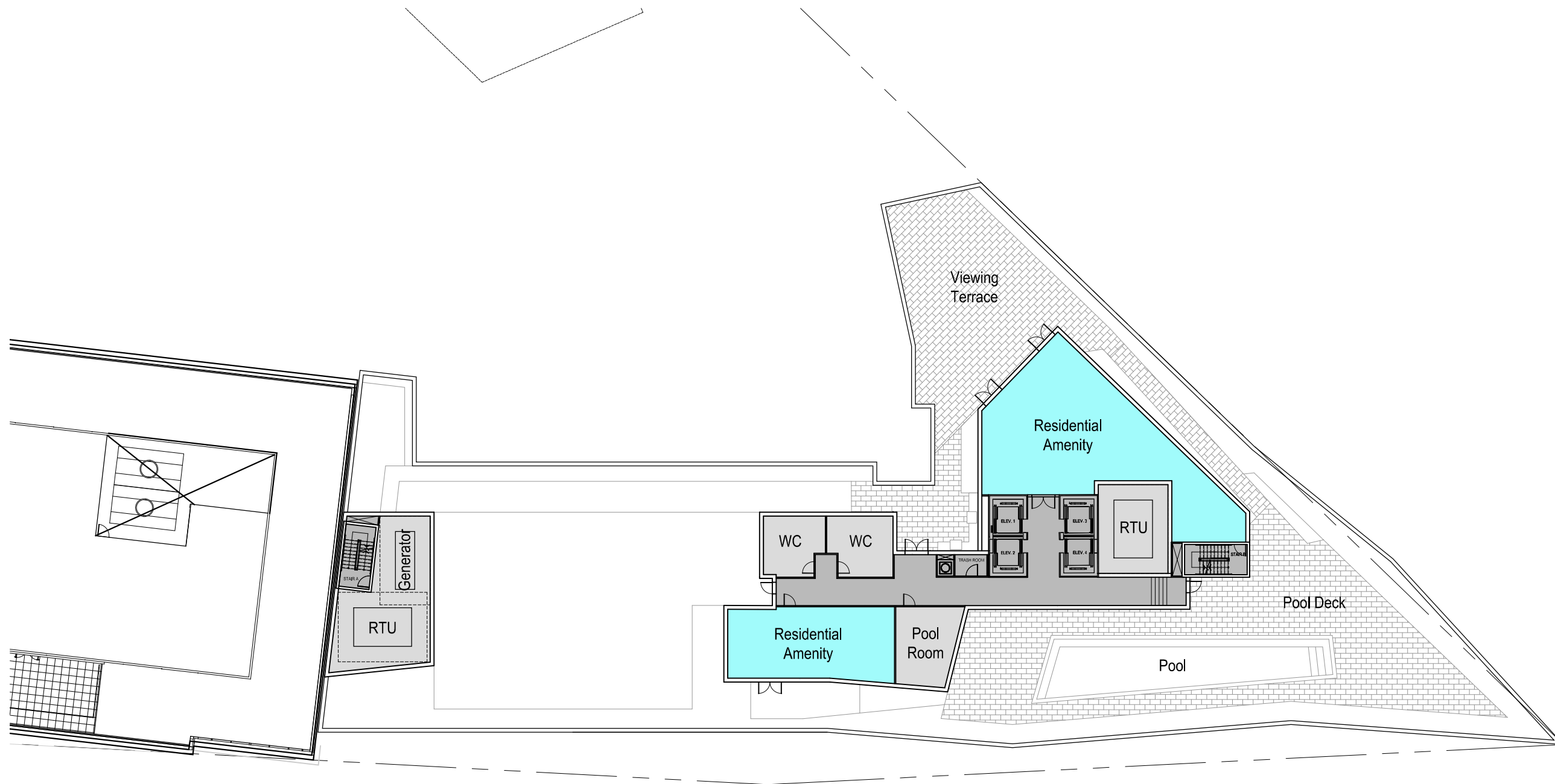
Washington Gateway | Washington, DC

July 18, 2016 | A-306



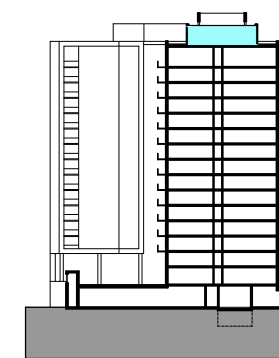
Architecture - North Tower - 9th-10th, & 13th-14th Floor Plans





Notes:

1. The interior and mechanical layouts shown of the building are schematic. Changes to the layouts and mechanical, not affecting the exterior envelope or the square footage distribution, may occur.
2. Refer to A-200 sheets for information on the South Tower.
3. Refer to A-308 for building dimensions and setbacks.
4. Final rooftop design to be determined by mechanical system selection.
5. Refer to landscape drawings for more information on roof design.



KEY SECTION

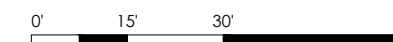
MRP | REALTY

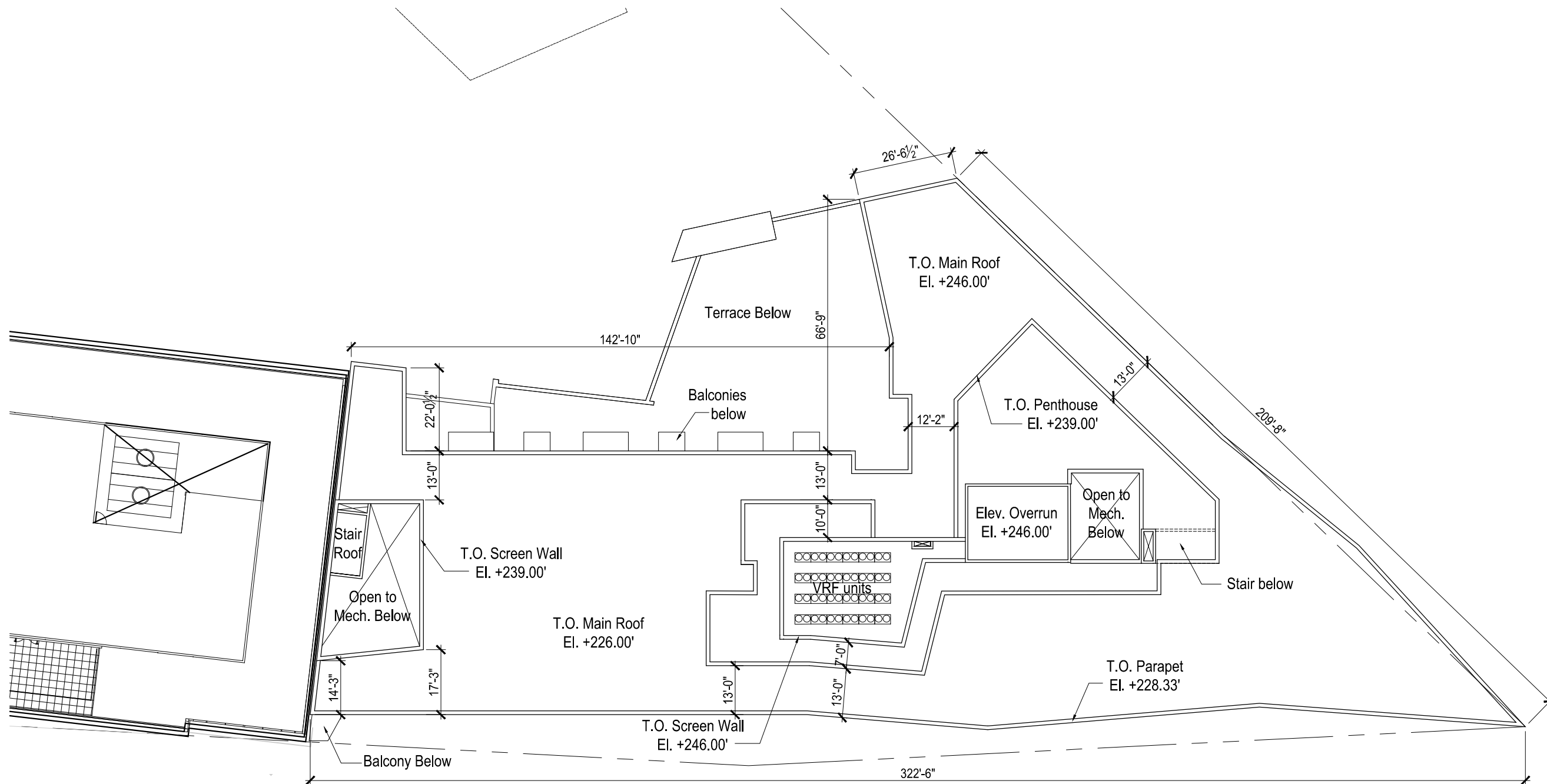
Washington Gateway | Washington, DC



Architecture - North Tower - Penthouse Plan

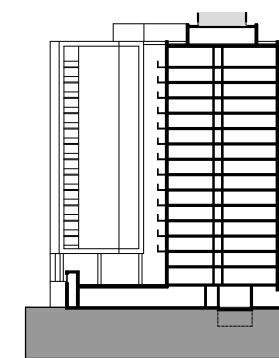
July 18, 2016 | A-307





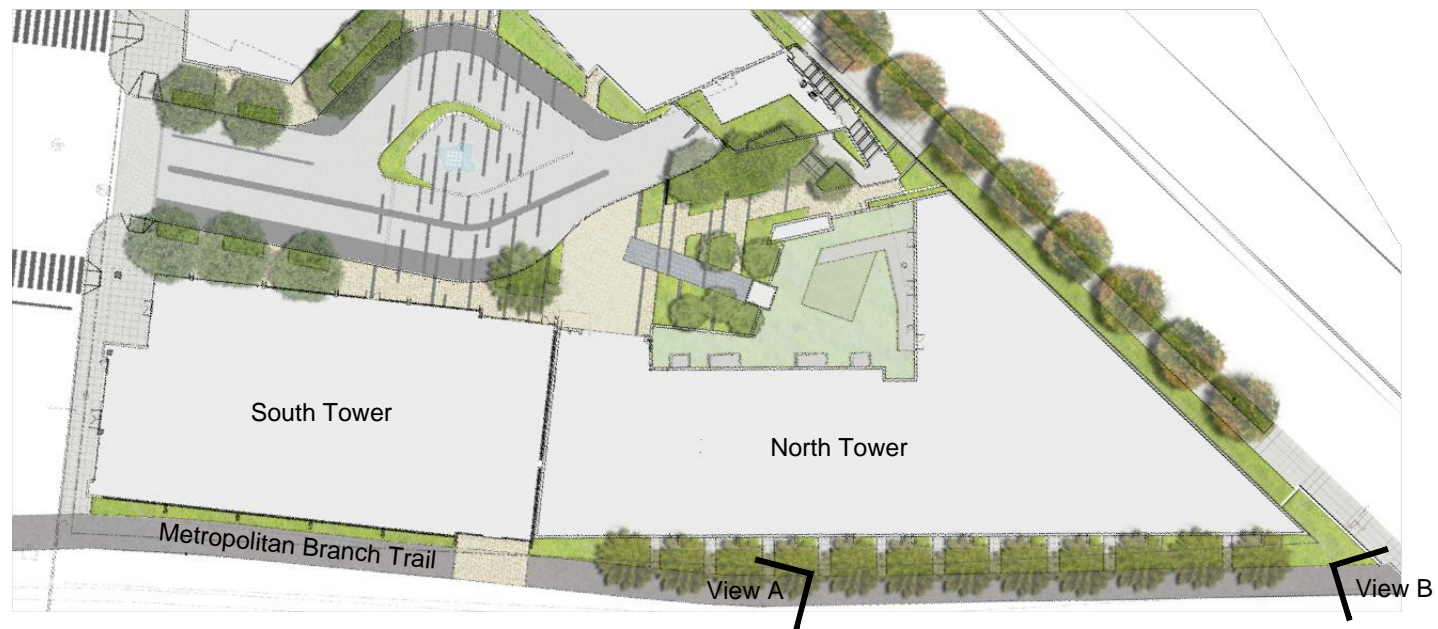
Notes:

1. The interior and mechanical layouts shown of the building are schematic. Changes to the layouts and mechanical, not affecting the exterior envelope or the square footage distribution, may occur.
2. Refer to A-200 sheets for information on the South Tower.
3. Final rooftop design to be determined by mechanical system selection.
4. Refer to landscape drawings for more information on roof design.



KEY SECTION





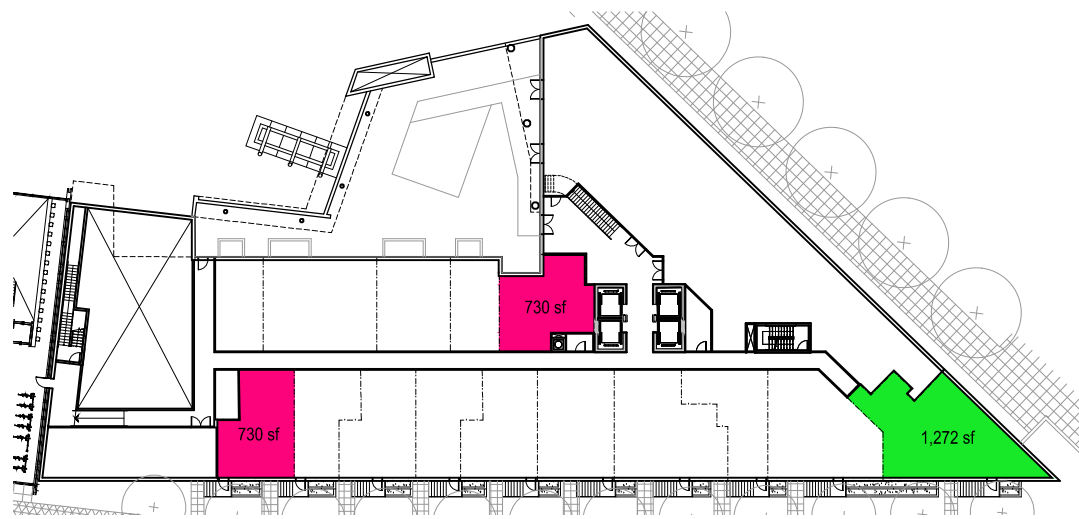
Key Plan



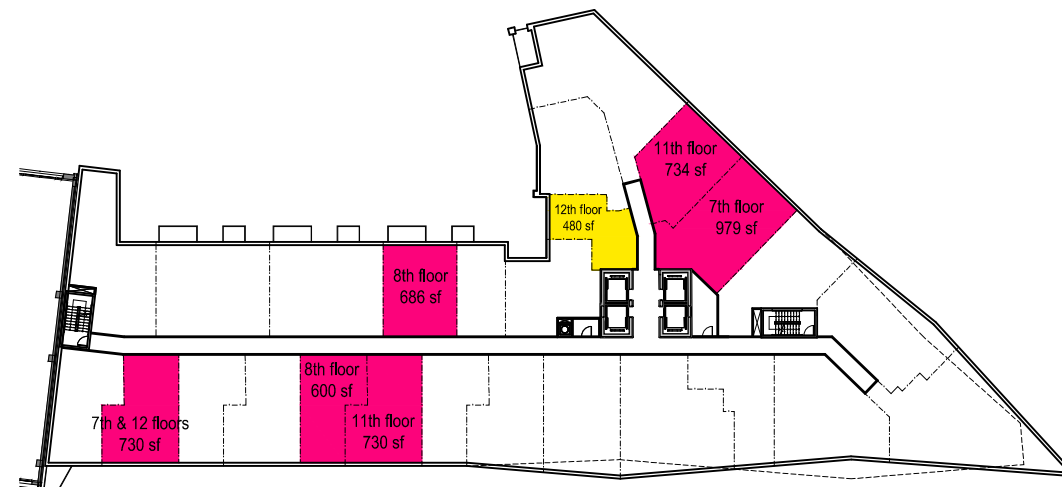
View A



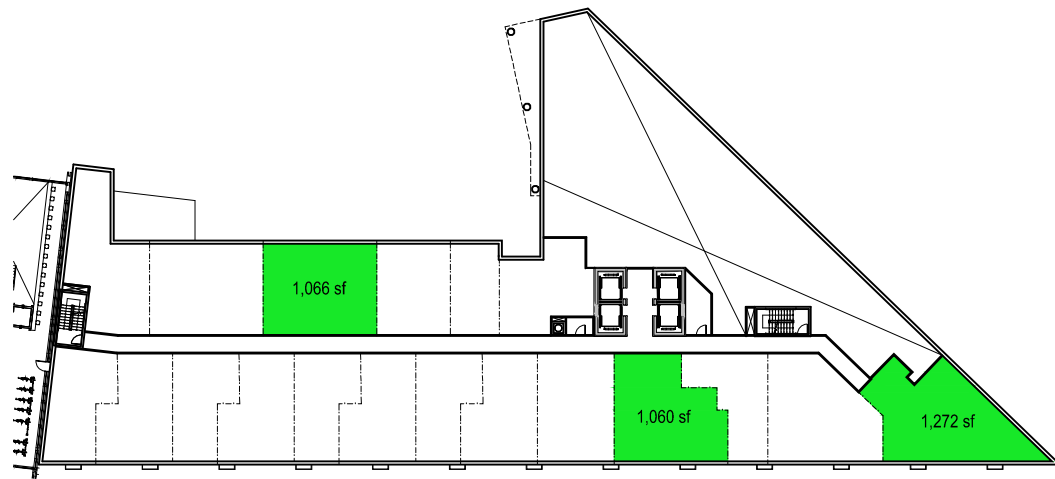
View B



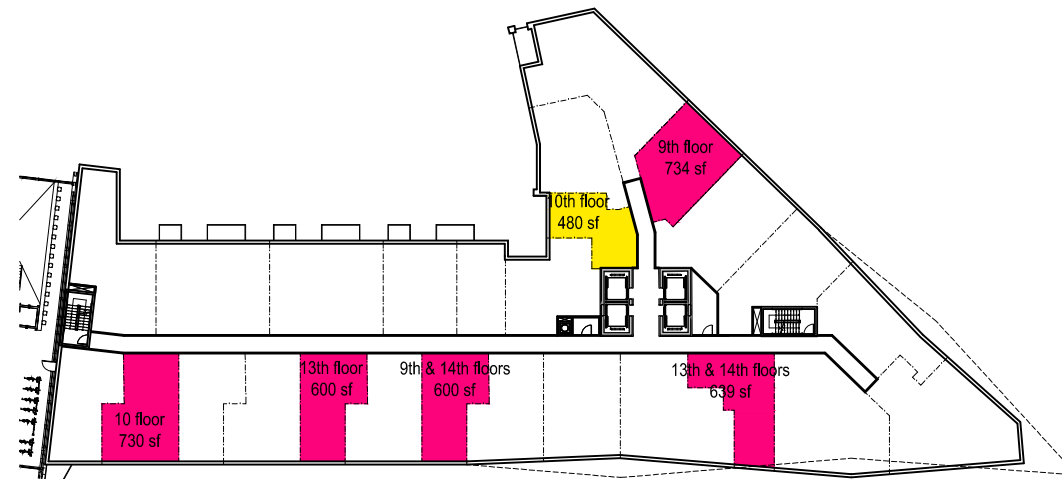
2nd Floor



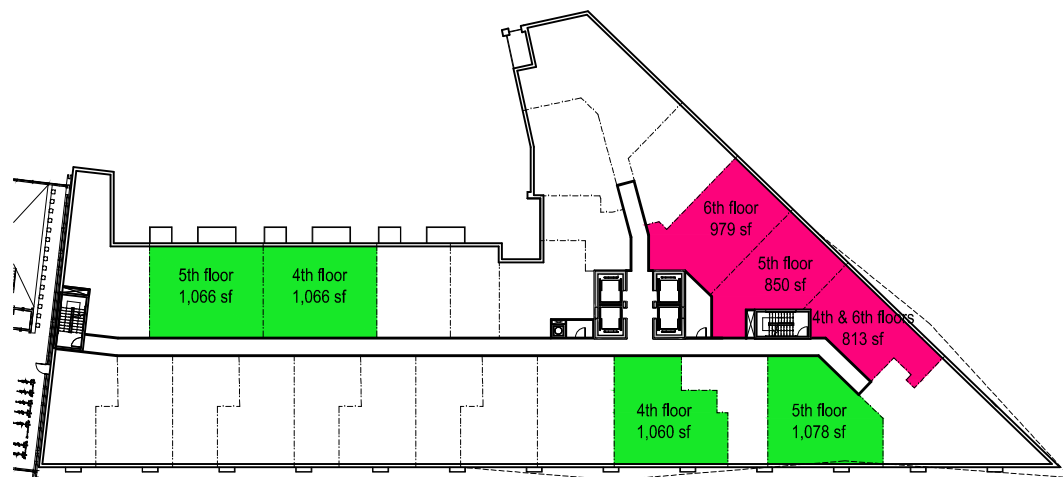
7th, 8th, 11th, & 12th Floors



3rd Floor



9th, 10th, 13th, & 14th Floors



4th-6th Floors

AFFORDABLE DWELLING UNIT MIX

Floor	Studio	1 Bed	2 Bed	Total
16	0	0	0	0
15	0	0	0	0
14	0	2	0	2
13	0	2	0	2
12	1	1	0	2
11	0	2	0	2
10	1	1	0	2
9	0	2	0	2
8	0	2	0	2
7	0	2	0	2
6	0	2	0	2
5	0	1	2	3
4	0	1	2	3
3	0	0	3	3
2	0	2	1	3
1	0	0	0	0
Total	2	20	8	30

Unit Type	ADUs	Market Units	Total Units
Two Bedroom	8	85	93
One Bedroom	20	230	250
Studio	2	27	29
Total	30	342	372

Notes:
 The IZ unit locations are based upon the current 372 dwelling unit count. The number and location of the IZ units are subject to change if the total number of dwelling units changes within the range requested as part of the PUD flexibility.