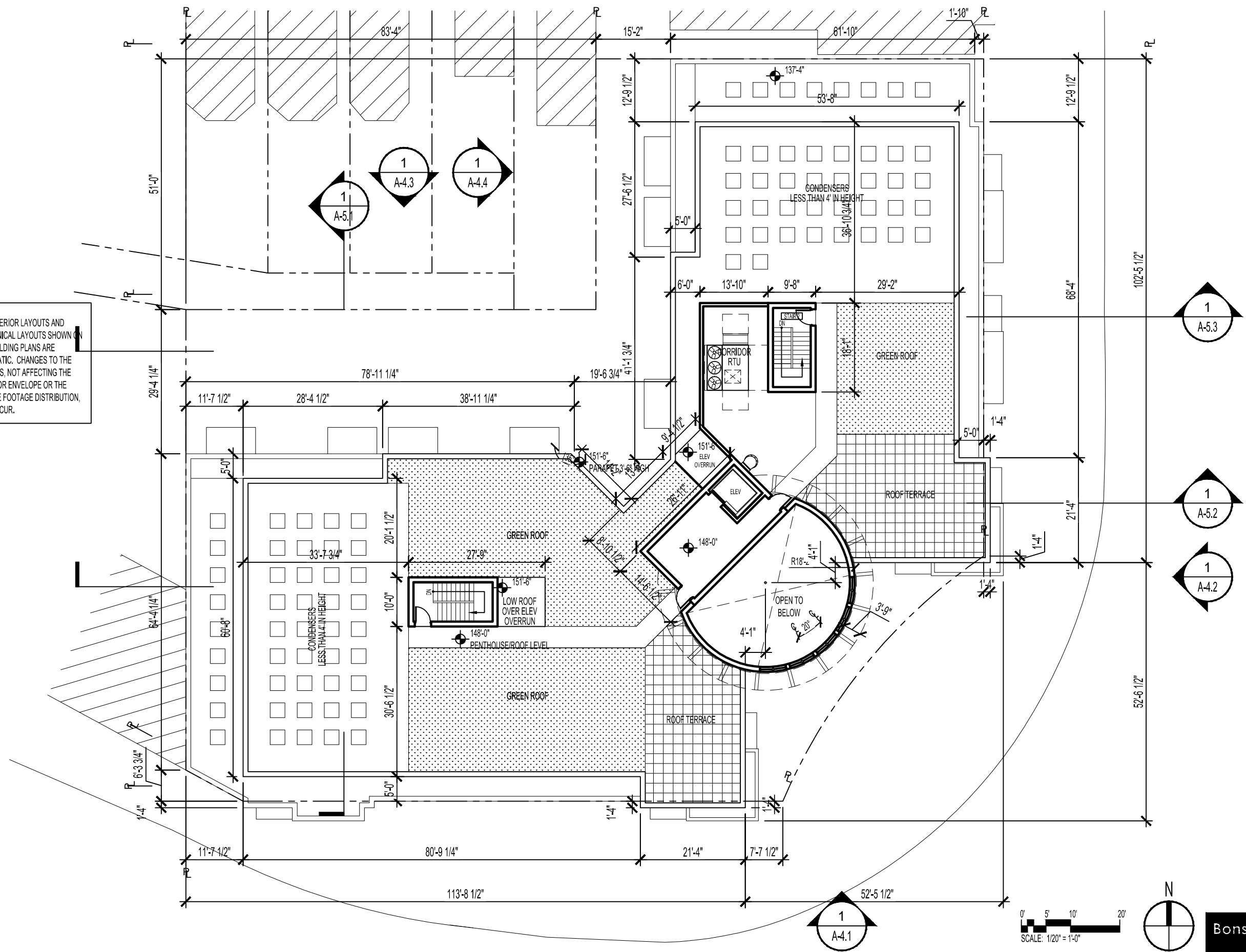


NOTE:  
THE INTERIOR LAYOUTS AND MECHANICAL LAYOUTS SHOWN ON THE BUILDING PLANS ARE SCHEMATIC. CHANGES TO THE LAYOUTS, NOT AFFECTING THE EXTERIOR ENVELOPE OR THE SQUARE FOOTAGE DISTRIBUTION, MAY OCCUR.



NOTE:  
THE INTERIOR LAYOUTS AND MECHANICAL LAYOUTS SHOWN ON THE BUILDING PLANS ARE SCHEMATIC. CHANGES TO THE LAYOUTS, NOT AFFECTING THE EXTERIOR ENVELOPE OR THE SQUARE FOOTAGE DISTRIBUTION, MAY OCCUR.

**Florida & Q Street, LLC**  
6820 Commercial Drive  
Springfield, VA 22151  
t: 703.750.8810 f: 703.750.8817

**Landscape Architecture Bureau**  
714 7th Street SE  
Washington, DC 20003  
t: 202.543.6553  
f: 202.543.6550

**AMT, LLC**  
10 G Street NE  
Suite 430  
Washington, DC 20002  
t: 202.289.4545  
f: 202.289.5051

**1600 North Capitol Street NW**  
Washington, DC 20002

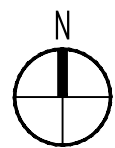
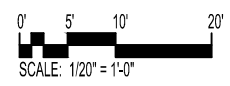
REVISIONS

1	PUD SUBMISSION	5/31/2013
2	SUPPLEMENTAL PREHEARING	
3	SUBMISSION	9/13/2013
4	REVISED FOR FTG	5/12/2015
5		
6		
7		
8		
9		
10		

DATE: 05/12/2015  
PROJECT NO: 2015-020  
DRAWN BY: JM, JH  
CHECKED BY: BB

**Bonstra Haresign**  
ARCHITECTS

APPROVED PENTHOUSE PLAN



**APPROVED**

1710 Connecticut Ave NW, Suite 400  
Washington, DC 20009-1123  
www.bonstra.com 202 588 9373  
202 588 9422  
**ZONING COMMISSION**  
District of Columbia  
CASE NO. 06-04E  
EXHIBIT NO. 1G

VEGETATED OR "GREEN" ROOF		
	APPROVED	PROPOSED
OVER AT LEAST 2" AND LESS THAN 8" OF GROWTH MEDIUM	3,536 SF	3,595 SF

GROSS FLOOR AREAS	SF
PENTHOUSE MECH.	585
SCREENED MECH. EQUIP.	1368
PENTHOUSE HABITABLE SPACE	3904
OVERALL PENTHOUSE	4779

**NOTES:**

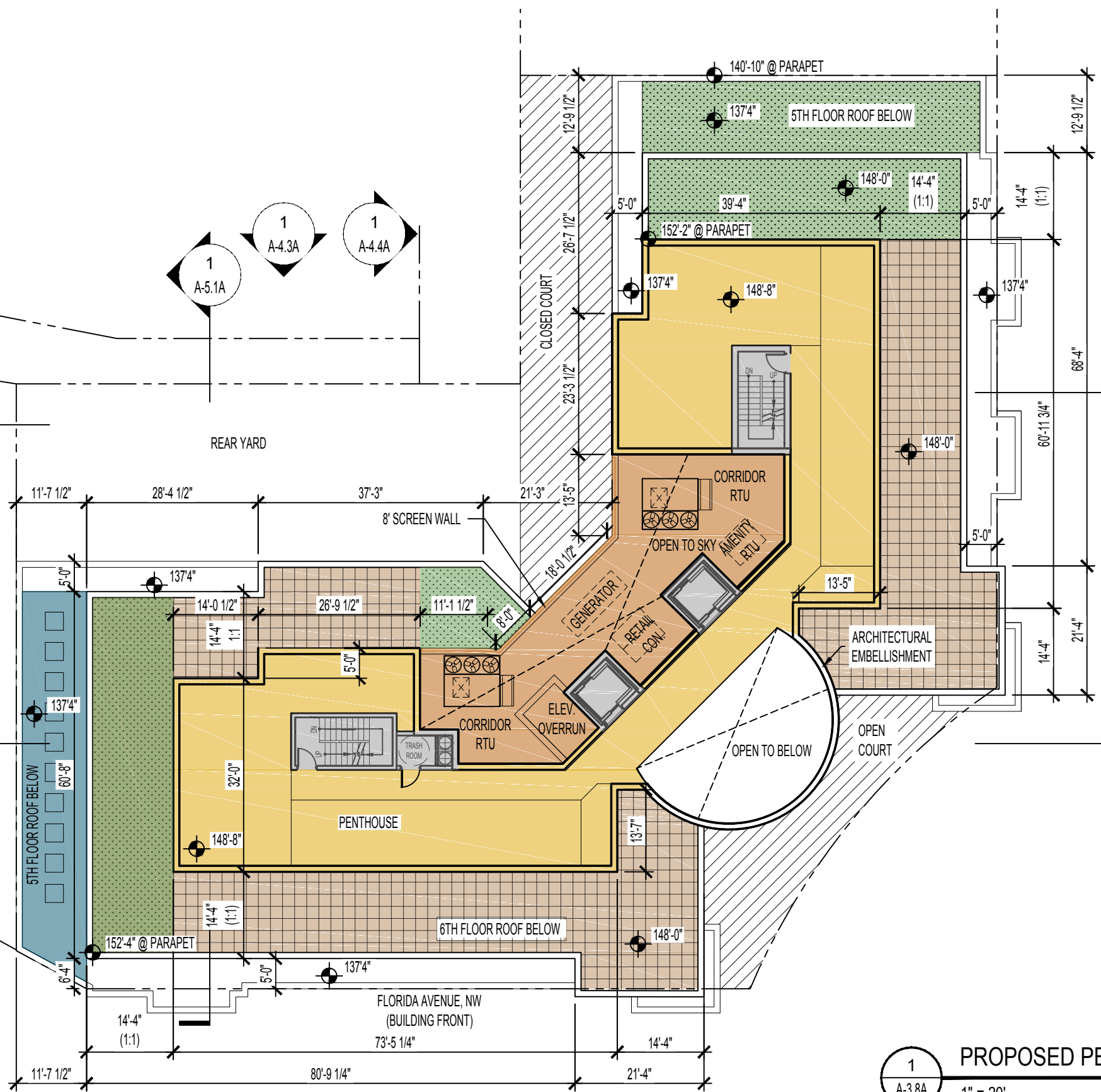
1. THE EXTERIOR ELEVATIONS, INCLUDING DOOR AND WINDOW SIZES AND LOCATIONS, THE INTERIOR PARTITION LOCATIONS, THE NUMBER, SIZE, AND LOCATIONS OF RESIDENTIAL UNITS, OUTDOOR SPACE, STAIRS BALCONY AND ELEVATORS ARE PRELIMINARY AND SHOWN FOR ILLUSTRATIVE PURPOSES ONLY. THE FINAL LAYOUTS MAY VARY.

2. ALL SPOT ELEVATIONS ARE RELATIVE TO THE MEASURING POINT 79'-1 1/2" TAKEN AT THE CENTER OF THE NORTH CAPITOL TOP OF CURB, ASSUMED FPR THESE DRAWINGS TO BE +0'-0"

**PROPOSED REVISIONS**

\*CHANGES TO ROOF STRUCTURE TO INCORPORATE ZC ORDER NO. 14-13

1. NEW GREEN ROOF LOCATION
2. NEW MECHANICAL EQUIPMENT LOCATION
3. NEW PARAPET HEIGHT



**LEGEND**

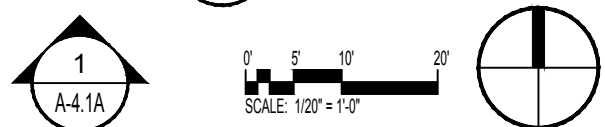
- PENTHOUSE MECH
- SCREENING
- MECHANICAL
- HABITABLE SPACE
- GREEN ROOF
- ROOF DECK

**REVISIONS**

1	PUD SUBMISSION	5/31/2013
2	SUPPLEMENTAL PREHEARING	
3	SUBMISSION	9/13/2013
4	REVISED FOR FTG	5/12/2015

DATE:	05/12/2015
PROJECT NO.:	2015-020
DRAWN BY:	JM. JH
CHECKED BY:	BB

**PROPOSED PENTHOUSE ROOF PLAN**  
1" = 20'

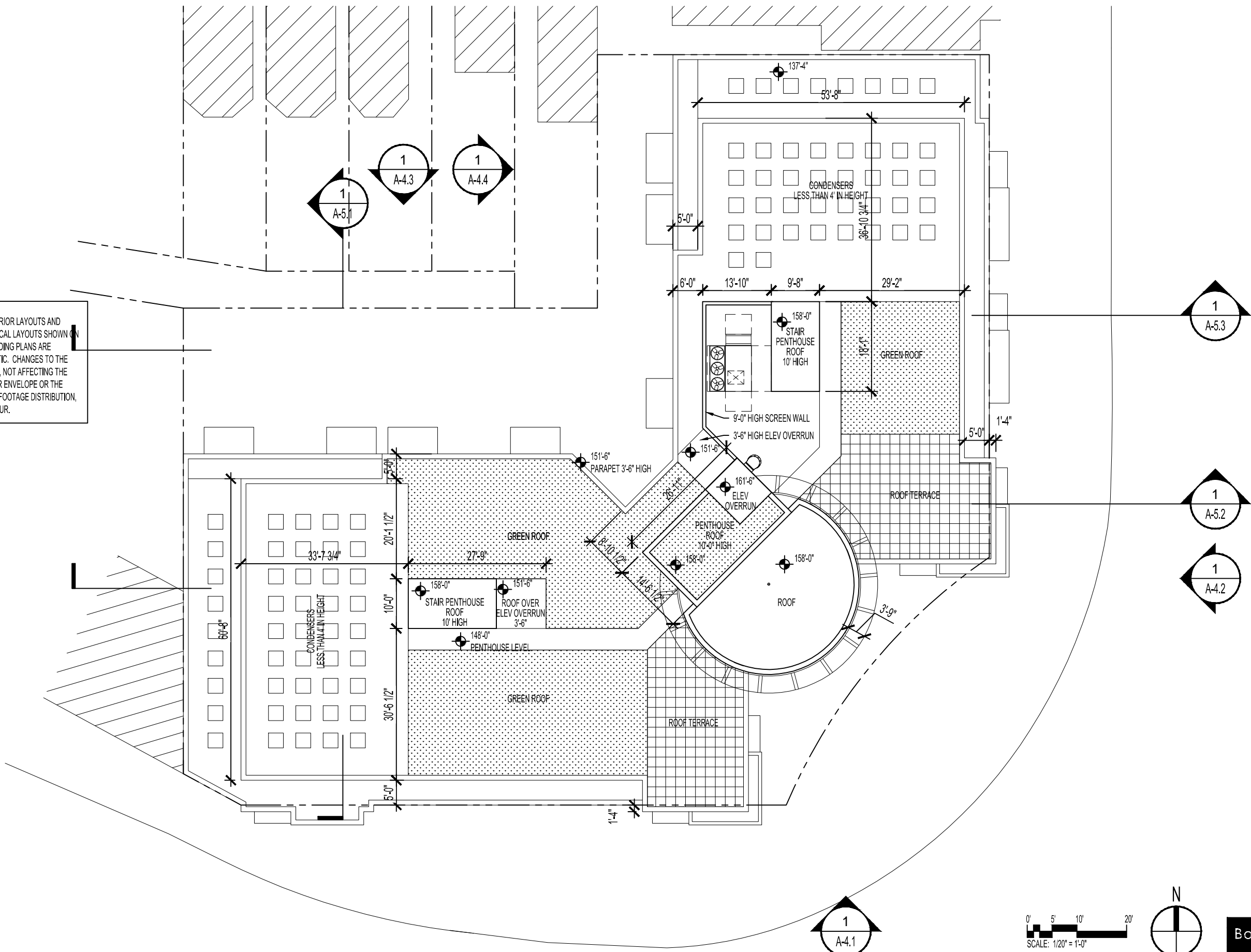


REVISIONS

1	PUD SUBMISSION	5/31/2013
2	SUPPLEMENTAL PREHEARING	
3	SUBMISSION	9/13/2013
4	REVISED FOR FIGS	5/12/2015
5		
6		
7		
8		
9		
10		

DATE:	05/12/2015
PROJECT NO:	2015-020
DRAWN BY:	JM, JH
CHECKED BY:	BB

NOTE:  
 THE INTERIOR LAYOUTS AND MECHANICAL LAYOUTS SHOWN ON THE BUILDING PLANS ARE SCHEMATIC. CHANGES TO THE LAYOUTS, NOT AFFECTING THE EXTERIOR ENVELOPE OR THE SQUARE FOOTAGE DISTRIBUTION, MAY OCCUR.



**PROPOSED REVISIONS**

\*CHANGES TO ROOF STRUCTURE TO INCORPORATE ZC ORDER NO. 14-13

1. NEW GREEN ROOF LOCATION
2. NEW MECHANICAL EQUIPMENT LOCATION
3. NEW PARAPET HEIGHT

**NOTES:**

1. THE EXTERIOR ELEVATIONS, INCLUDING DOOR AND WINDOW SIZES AND LOCATIONS, THE INTERIOR PARTITION LOCATIONS, THE NUMBER, SIZE, AND LOCATIONS OF RESIDENTIAL UNITS, OUTDOOR SPACE, STAIRS, BALCONY AND ELEVATORS ARE PRELIMINARY AND SHOWN FOR ILLUSTRATIVE PURPOSES ONLY. THE FINAL LAYOUTS MAY VARY.
2. ALL SPOT ELEVATIONS ARE RELATIVE TO THE MEASURING POINT 79'-1 1/2" TAKEN AT THE CENTER OF THE NORTH CAPITOL TOP OF CURB, ASSUMED FPR THESE DRAWINGS TO BE +0'-0"

**Florida & Q Street, LLC**  
 6820 Commercial Drive  
 Springfield, VA 22151  
 t: 703.750.8810 f: 703.750.8817

**Landscape Architecture Bureau**  
 714 7th Street SE  
 Washington, DC 20003  
 t: 202.543.6553  
 f: 202.543.6550

**AMT, LLC**  
 10 G Street NE  
 Suite 430  
 Washington, DC 20002  
 t: 202.289.4545  
 f: 202.289.5051

**1600 North Capitol Street NW**  
 Washington, DC 20002

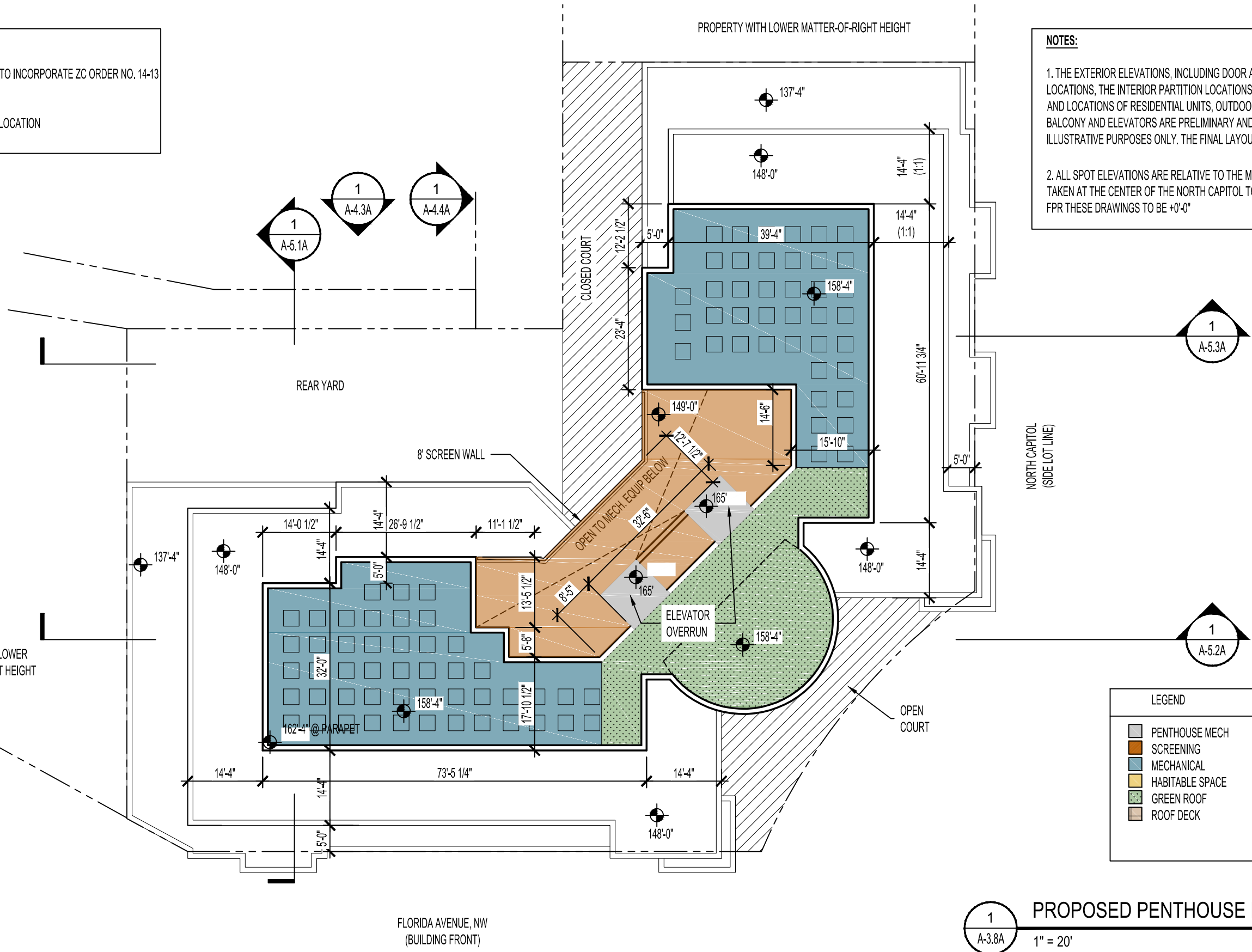
REVISIONS

1	PUD SUBMISSION	5/31/2013
2	SUPPLEMENTAL PREHEARING	
3	SUBMISSION	9/13/2013
4	REVISED FOR FTG	5/12/2015

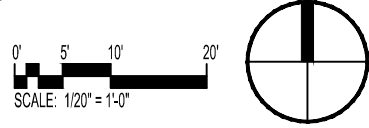
DATE: 05/12/2015  
 PROJECT NO: 2015-020  
 DRAWN BY: JM, JH  
 CHECKED BY: BB

PROPOSED PENTHOUSE ROOF PLAN

**A-3.8A**



**1**  
 A-3.8A  
**PROPOSED PENTHOUSE ROOF PLAN**  
 1" = 20'



**Bonstra Haresign**  
 ARCHITECTS

1710 Connecticut Ave NW, Suite 400  
 Washington, DC 20009-1123

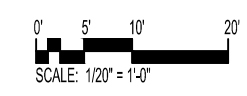
www.bonstra.com 202 588 9373 T  
 202 588 8122 F



2 PROPOSED FLORIDA AVENUE ELEVATION  
A-4.1A 1" = 20'



1 APPROVED FLORIDA AVENUE ELEVATION  
A-4.1A 1" = 20'



**Florida & Q Street, LLC**  
6820 Commercial Drive  
Springfield, VA 22151  
t: 703.750.8810 f: 703.750.8817

**Landscape Architecture Bureau**  
714 7th Street SE  
Washington, DC 20003  
t: 202.543.6553  
f: 202.543.6550

**AMT, LLC**  
10 G Street NE  
Suite 430  
Washington, DC 20002  
t: 202.289.4545  
f: 202.289.5051

**1600 North Capitol Street NW**  
Washington, DC 20002

REVISIONS

1	PUD SUBMISSION	5/31/2013
2	SUPPLEMENTAL PREHEARING	
3	SUBMISSION	9/13/2013
4	REVISED FOR FTG	5/12/2015
5		
6		
7		
8		
9		
10		

DATE:	05/12/2015
PROJECT NO:	2015-020
DRAWN BY:	JM, JH
CHECKED BY:	BB

**Bonstra Haresign**  
ARCHITECTS

FLORIDA AVENUE  
ELEVATION

1710 Connecticut Ave NW, Suite 400  
Washington, DC 20009-1123

www.bonstra.com 202 588 9373 T  
202 588 8122 F

**A-4.1A**

4'-0"  
 14'-4"  
 4'-2"  
 10'-8"  
 10'-8"  
 10'-8"  
 73'-0 1/2"

PENTHOUSE PARAPET  
 ELEV: 162'-4"  
 PENTHOUSE ROOF  
 ELEV: 158'-4"  
 PARAPET  
 ELEV: 152'-2"  
 PENTHOUSE/MAIN ROOF  
 ELEV: 148'-0"  
 6TH FLOOR  
 ELEV: 137'-4"  
 5TH FLOOR  
 ELEV: 126'-8"  
 4TH FLOOR  
 ELEV: 116'-0"



2 PROPOSED NORTH CAPITOL ELEVATION  
 A-4.2A 1" = 20'

10'-0"  
 3'-6"  
 10'-8"  
 10'-8"  
 10'-8"  
 72'-4 1/2"

PENTHOUSE ROOF  
 ELEV: 158'-0"  
 PARAPET  
 ELEV: 151'-6"  
 PENTHOUSE/MAIN ROOF  
 ELEV: 148'-0"  
 6TH FLOOR  
 ELEV: 137'-4"  
 5TH FLOOR  
 ELEV: 126'-8"  
 4TH FLOOR  
 ELEV: 116'-0"



1 APPROVED NORTH CAPITOL ELEVATION  
 A-4.2A 1" = 20'

0' 5' 10' 20'  
 SCALE: 1/20" = 1'-0"

Bonstra Haresign  
 ARCHITECTS

NORTH CAPITAL  
 ELEVATION

A-4.2A

REVISIONS

1	PUD SUBMISSION	5/31/2013
2	SUPPLEMENTAL PREHEARING	
3	SUBMISSION	9/13/2013
4	REVISED FOR FIG.	5/12/2015
5		
6		
7		
8		
9		
10		

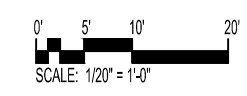
DATE:	05/12/2015
PROJECT NO.:	2015-020
DRAWN BY:	JM, JH
CHECKED BY:	BB



2 PROPOSED NORTH COURTYARD ELEVATION  
A-4.3A 1" = 20'



1 APPROVED NORTH COURTYARD ELEVATION  
A-4.3A 1" = 20'



**Florida & Q Street, LLC**  
6820 Commercial Drive  
Springfield, VA 22151  
t: 703.750.8810 f: 703.750.8817

**Landscape Architecture Bureau**  
714 7th Street SE  
Washington, DC 20003  
t: 202.543.6553  
f: 202.543.6550

**AMT, LLC**  
10 G Street NE  
Suite 430  
Washington, DC 20002  
t: 202.289.4545  
f: 202.289.5051

**1600 North Capitol Street NW**  
Washington, DC 20002

REVISIONS

1	PUD SUBMISSION	5/31/2013
2	SUPPLEMENTAL PREHEARING	
3	SUBMISSION	9/13/2013
4	REVISED FOR FTG	5/12/2015
5		
6		
7		
8		
9		
10		

DATE:	05/12/2015
PROJECT NO.:	2015-020
DRAWN BY:	JM, JH
CHECKED BY:	BB

**Bonstra Haresign**  
ARCHITECTS

NORTH COURTYARD  
ELEVATION

1710 Connecticut Ave NW, Suite 400  
Washington, DC 20009-1123

www.bonstra.com 202 588 9373 T  
202 588 8122 F

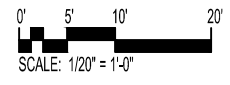
**A-4.3A**



2 PROPOSED WEST COURTYARD ELEVATION  
A-4.4A 1" = 20'



1 APPROVED WEST COURTYARD ELEVATION  
A-4.4A 1" = 20'



**Florida & Q Street, LLC**  
6820 Commercial Drive  
Springfield, VA 22151  
t: 703.750.8810 f: 703.750.8817

**Landscape Architecture Bureau**  
714 7th Street SE  
Washington, DC 20003  
t: 202.543.6553  
f: 202.543.6550

**AMT, LLC**  
10 G Street NE  
Suite 430  
Washington, DC 20002  
t: 202.289.4545  
f: 202.289.5051

**1600 North Capitol Street NW**  
Washington, DC 20002

REVISIONS

1	PUD SUBMISSION	5/31/2013
2	SUPPLEMENTAL PREHEARING	
3	SUBMISSION	9/13/2013
3	REVISED FOR FTG.	5/12/2015
4		
5		
6		
7		
8		
9		
10		

DATE:	05/12/2015
PROJECT NO:	2015-020
DRAWN BY:	JM, JH
CHECKED BY:	BB

**Bonstra Haresign**  
ARCHITECTS

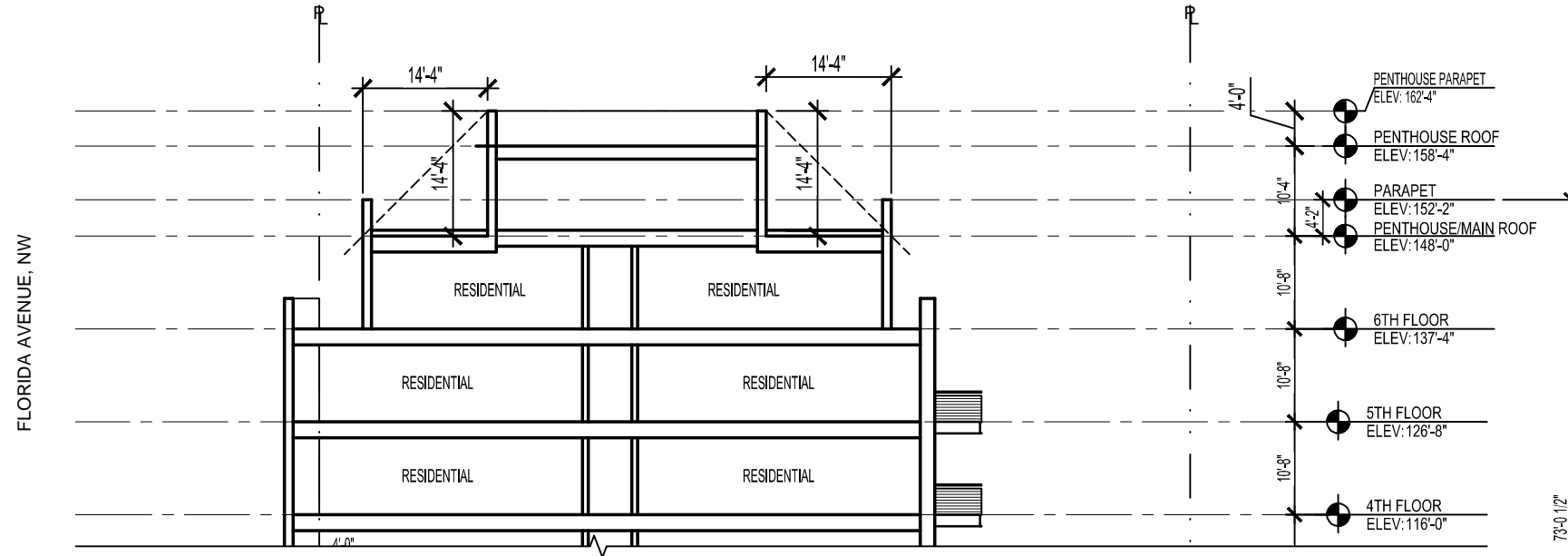
WEST COURTYARD  
ELEVATION

1710 Connecticut Ave NW, Suite 400  
Washington, DC 20009-1123

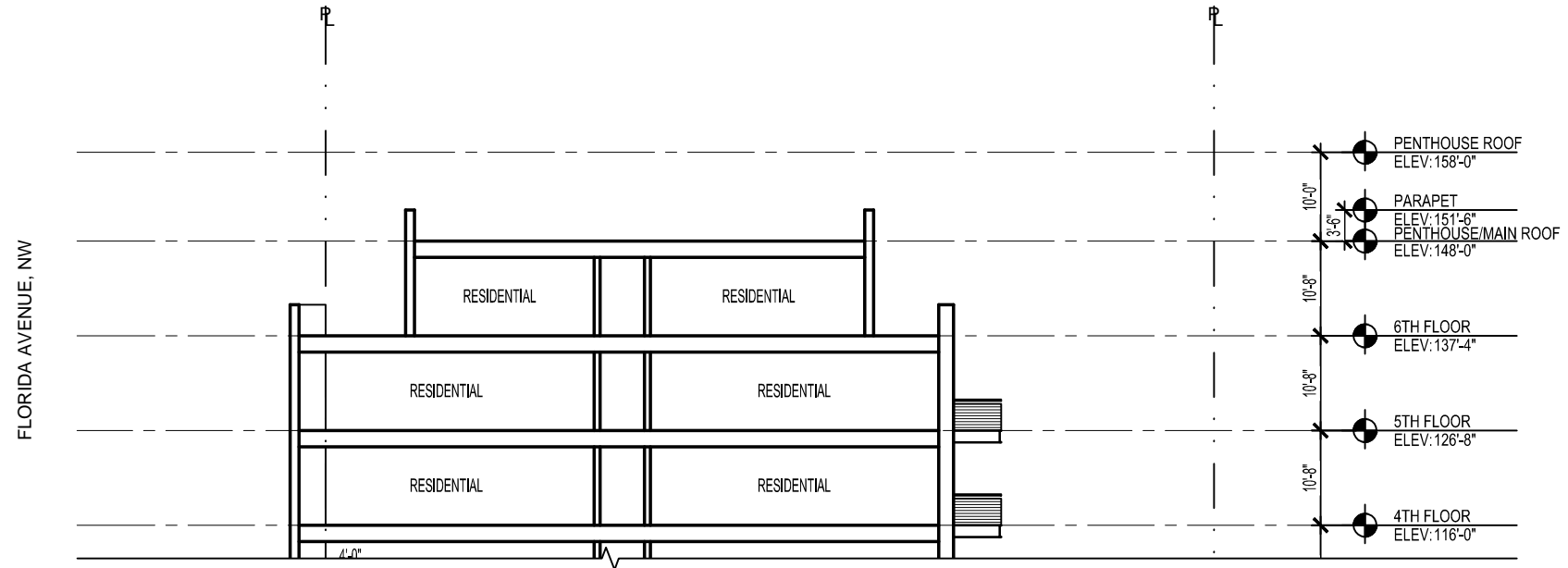
www.bonstra.com 202 588 9373 T  
202 588 8122 F

**A-4.4A**



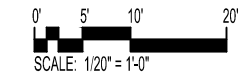


2 PROPOSED BUILDING SECTION  
A-5.1A 1" = 20'



1 APPROVED BUILDING SECTION  
A-5.1A 1" = 20'

SEE PLAN SHEETS A3.7-3.8A FOR LOCATIONS OF SECTION CUT



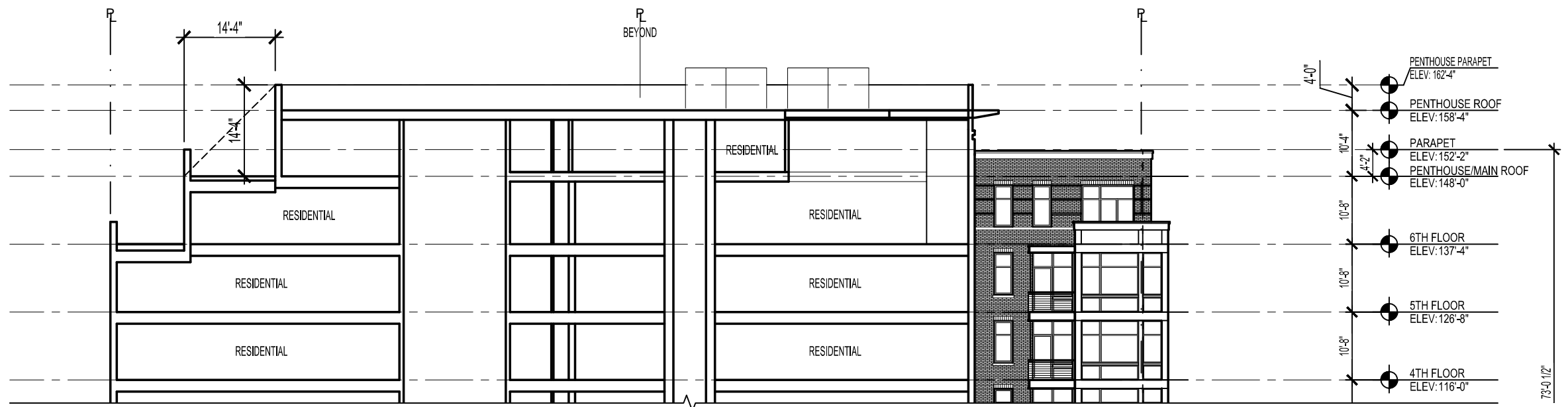
**Bonstra Haresign**  
ARCHITECTS

BUILDING SECTION

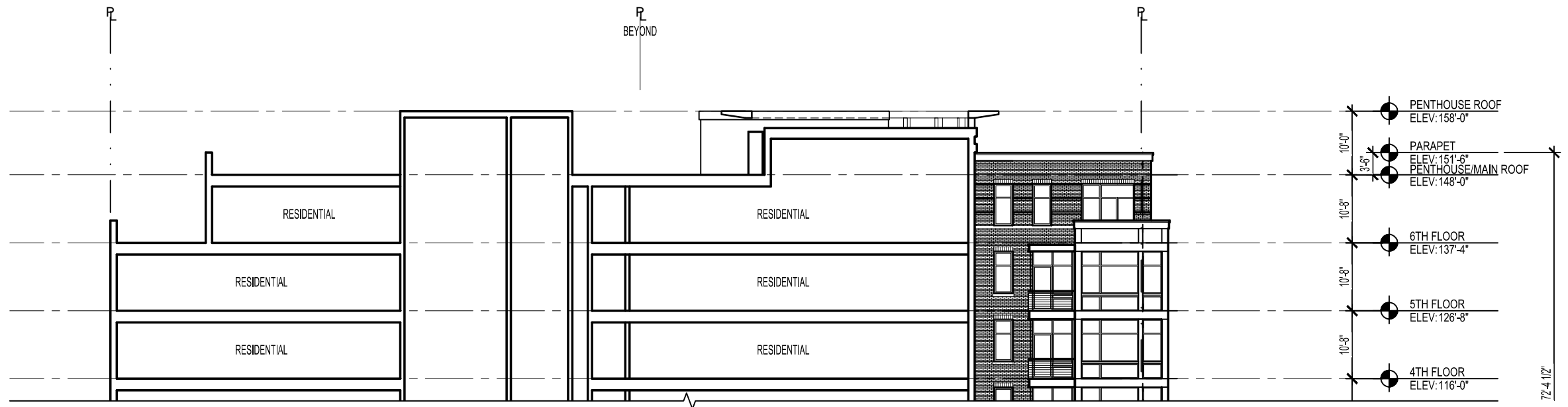
REVISIONS

1	PUD SUBMISSION	5/31/2013
2	SUPPLEMENTAL PREHEARING	
3	SUBMISSION	9/13/2013
4	REVISED FOR FTG	5/12/2015
5		
6		
7		
8		
9		
10		

DATE:	05/12/2015
PROJECT NO:	2015-020
DRAWN BY:	JM, JH
CHECKED BY:	BB



**2** PROPOSED BUILDING SECTION  
A-5.2A 1" = 20'



**1** APPROVED BUILDING SECTION  
A-5.2A 1" = 20'

**Florida & Q Street, LLC**  
6820 Commercial Drive  
Springfield, VA 22151  
t: 703.750.8810 f: 703.750.8817

**Landscape Architecture Bureau**  
714 7th Street SE  
Washington, DC 20003  
t: 202.543.6553 f: 202.543.6550

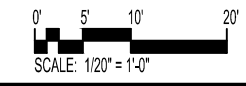
**AMT, LLC**  
10 G Street NE  
Suite 430  
Washington, DC 20002  
t: 202.289.4545 f: 202.289.5051

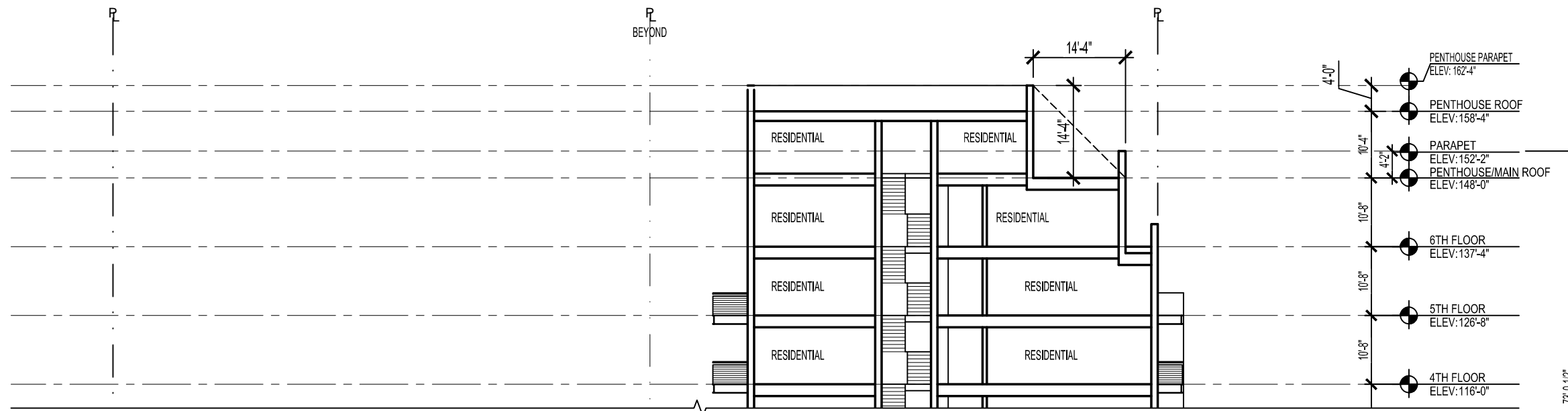
**1600 North Capitol Street NW**  
Washington, DC 20002

REVISIONS

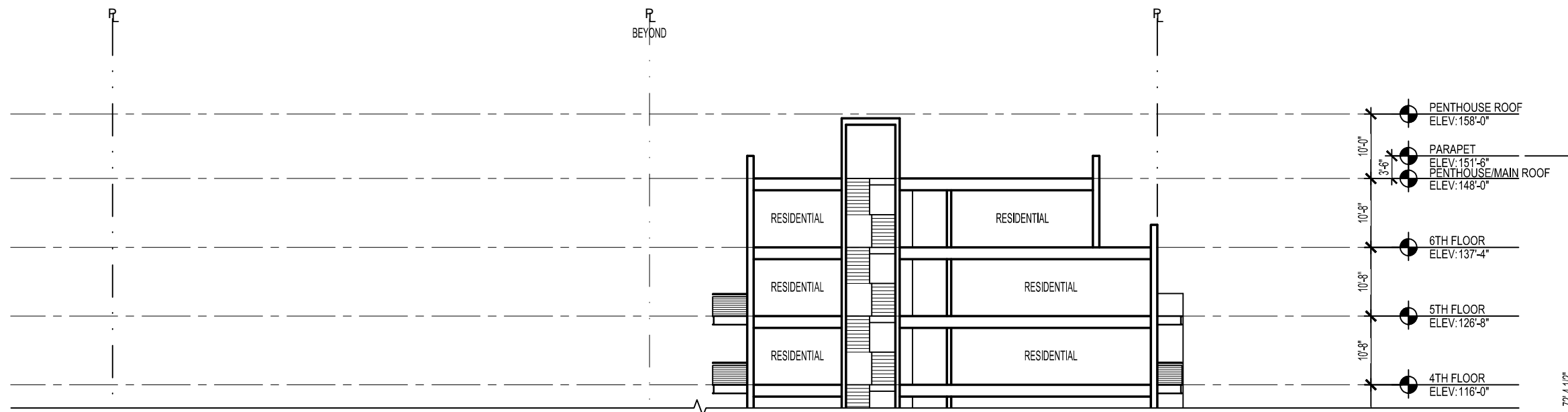
1	PUD SUBMISSION	5/31/2013
2	SUPPLEMENTAL PREHEARING SUBMISSION	9/13/2013
3	REVISED FOR FTG	5/12/2015
4		
5		
6		
7		
8		
9		
10		

DATE:	05/12/2015
PROJECT NO:	2015-020
DRAWN BY:	JM, JH
CHECKED BY:	BB



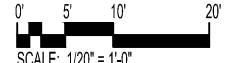


2 PROPOSED BUILDING SECTION  
A-5.3A 1" = 20'



1 APPROVED BUILDING SECTION  
A-5.3A 1" = 20'

SEE PLAN SHEETS A3.7-3.8A FOR LOCATIONS OF SECTION CUT



NORTH CAPITOL STREET

NORTH CAPITOL STREET

**Florida & Q Street, LLC**  
6820 Commercial Drive  
Springfield, VA 22151  
t: 703.750.8810 f: 703.750.8817

**Landscape Architecture Bureau**  
714 7th Street SE  
Washington, DC 20003  
t: 202.543.6553  
f: 202.543.6550

**AMT, LLC**  
10 G Street NE  
Suite 430  
Washington, DC 20002  
t: 202.289.4545  
f: 202.289.5051

**1600 North Capitol Street NW**  
Washington, DC 20002

REVISIONS

1	PUD SUBMISSION	5/31/2013
2	SUPPLEMENTAL PREHEARING	
3	SUBMISSION	9/13/2013
4	REVISED FOR FTG	5/12/2015
5		
6		
7		
8		
9		
10		

DATE:	05/12/2015
PROJECT NO:	2015-020
DRAWN BY:	JM, JH
CHECKED BY:	BB