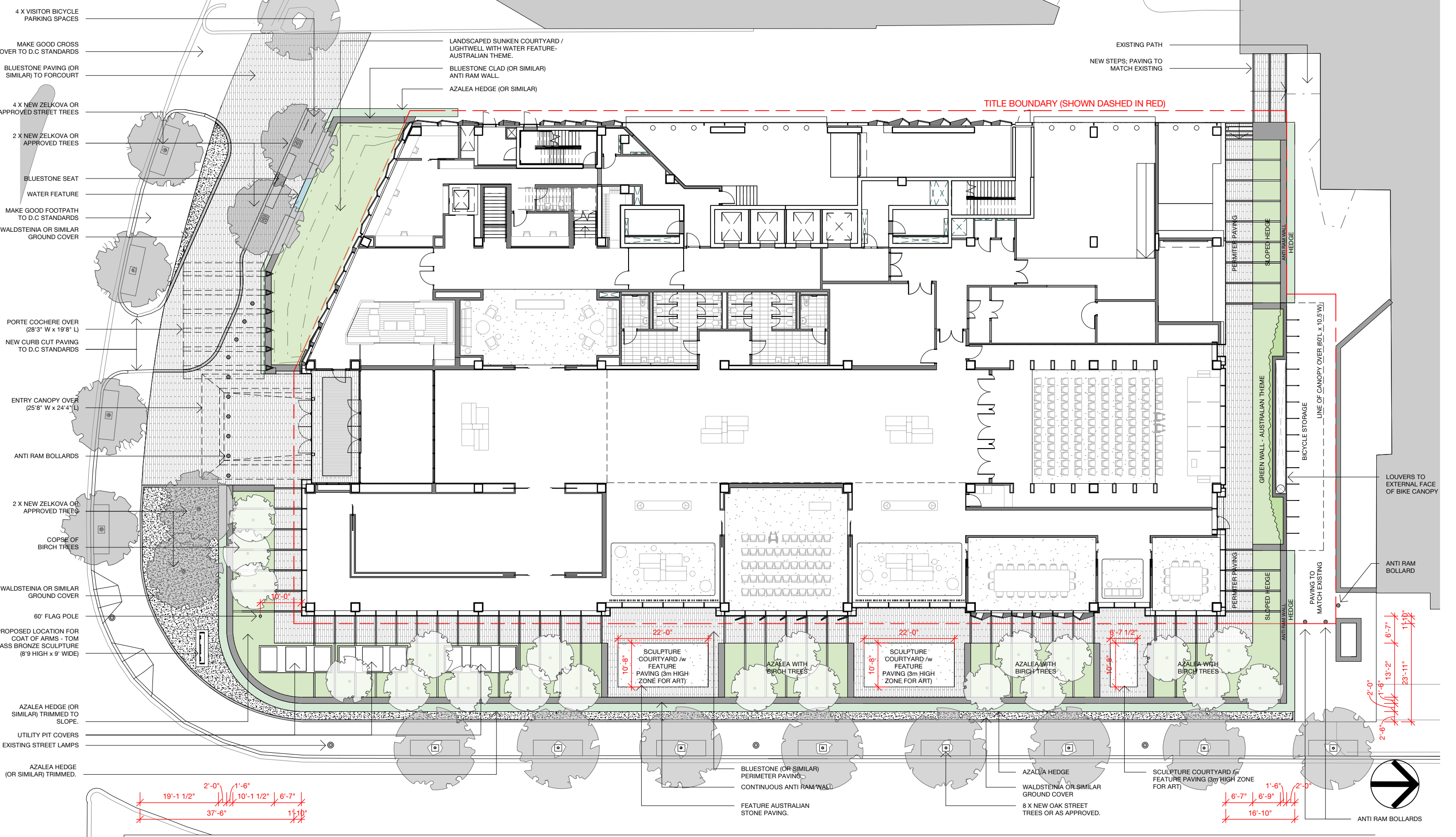




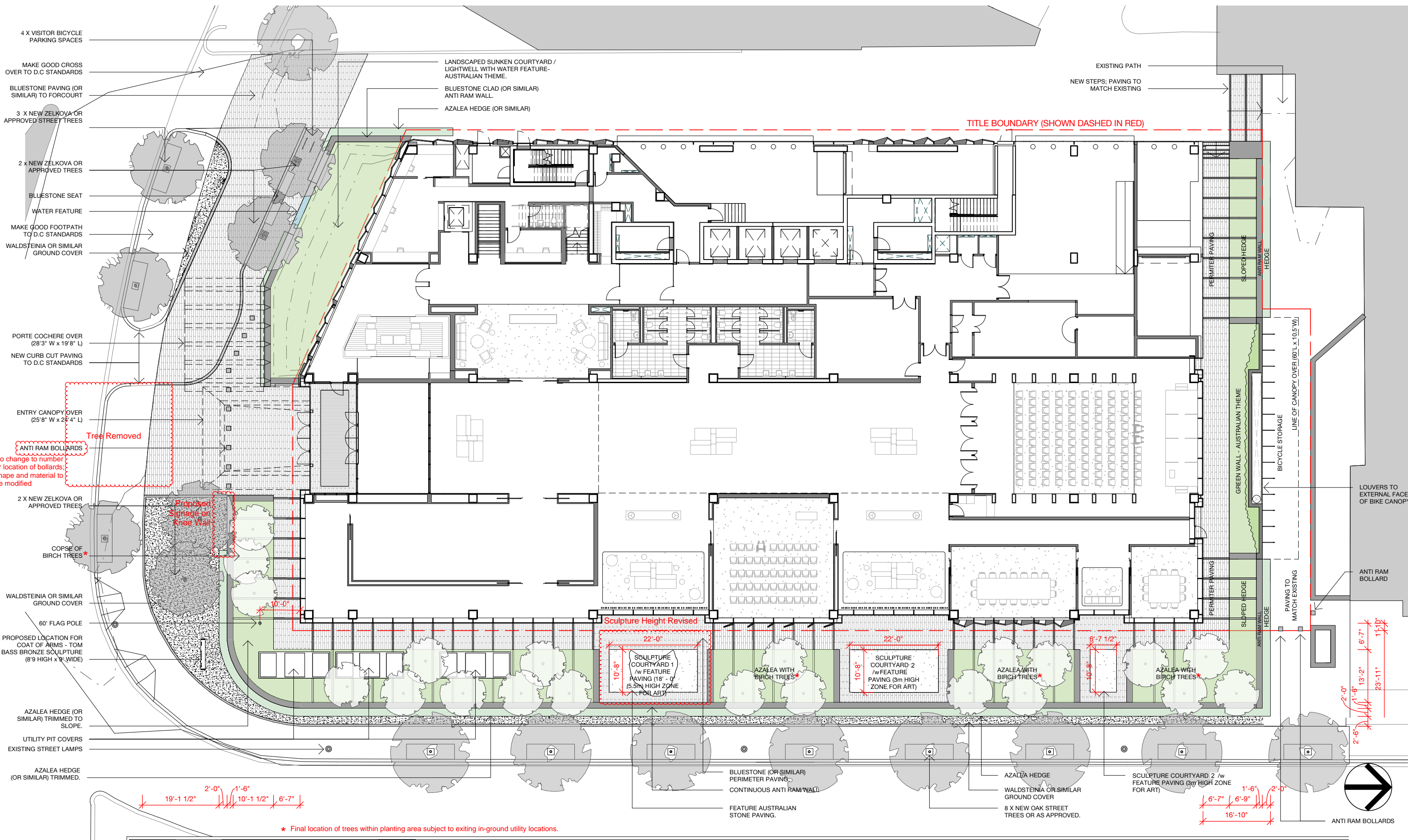
# **EMBASSY OF AUSTRALIA, WASHINGTON D.C.**

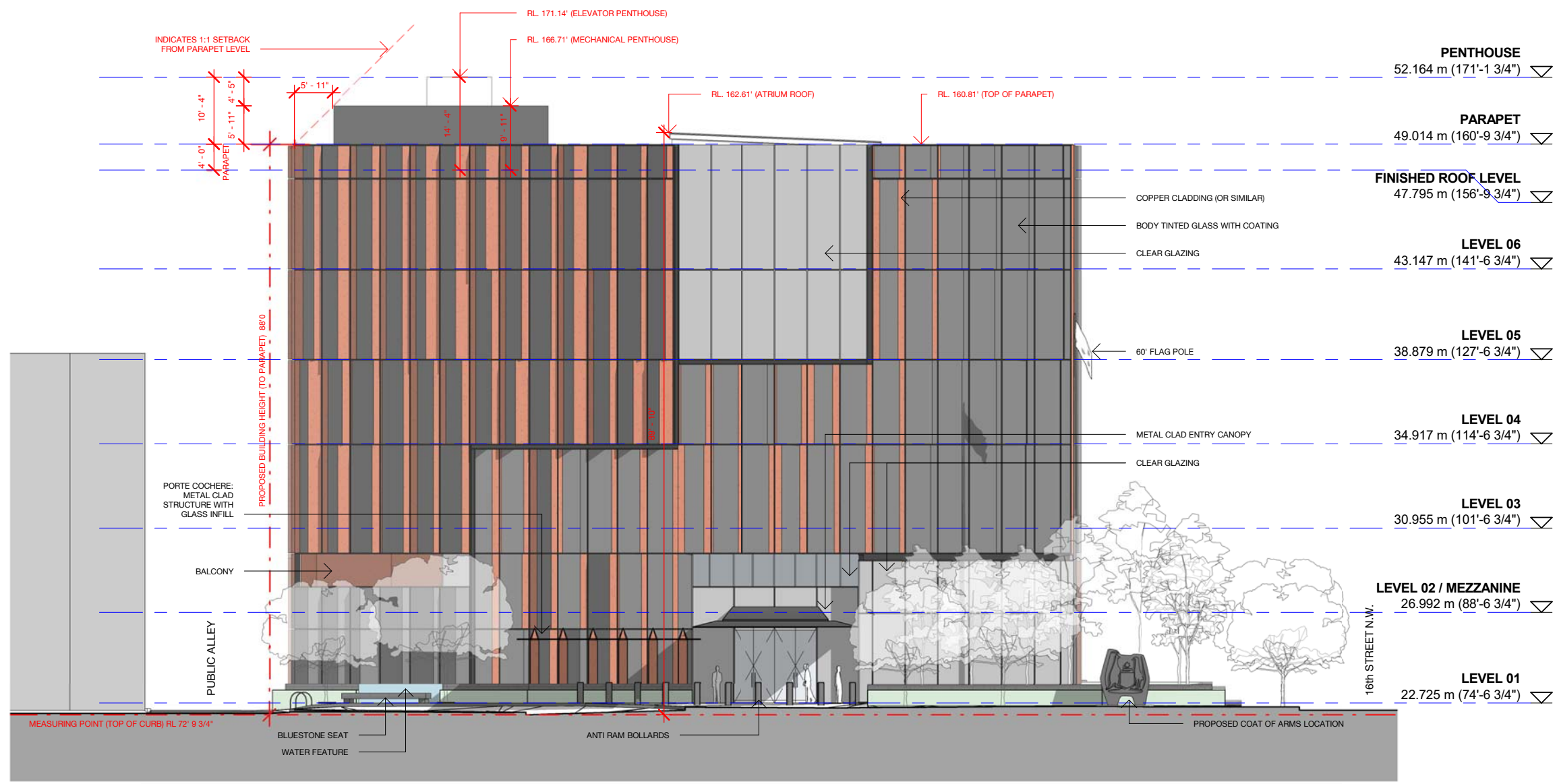
**APPLICATION FOR A MODIFICATION OF  
CONSEQUENCE TO FMBZA CASE NO. 19557**

**JANUARY 17, 2020**

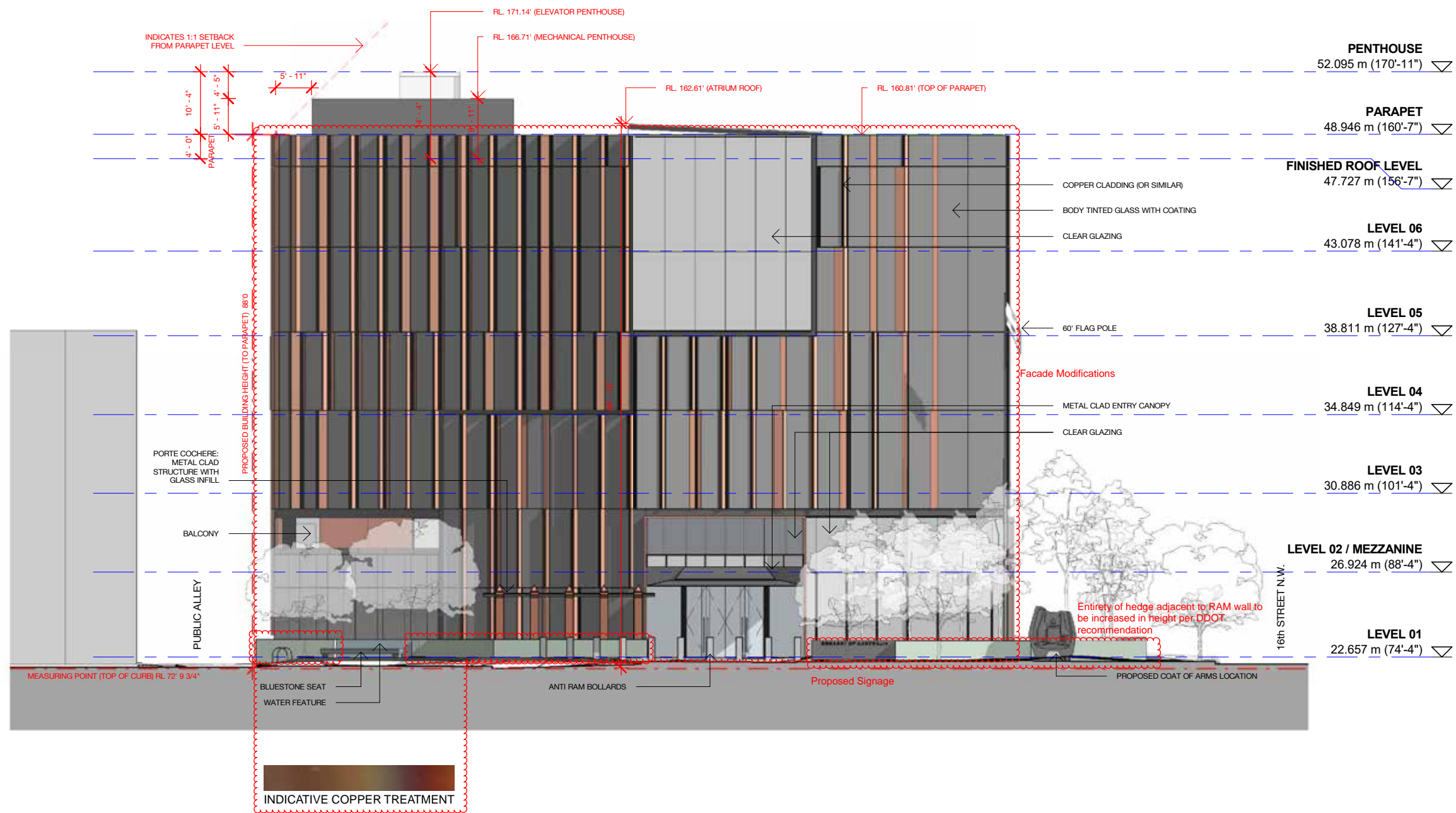


**APPROVED**

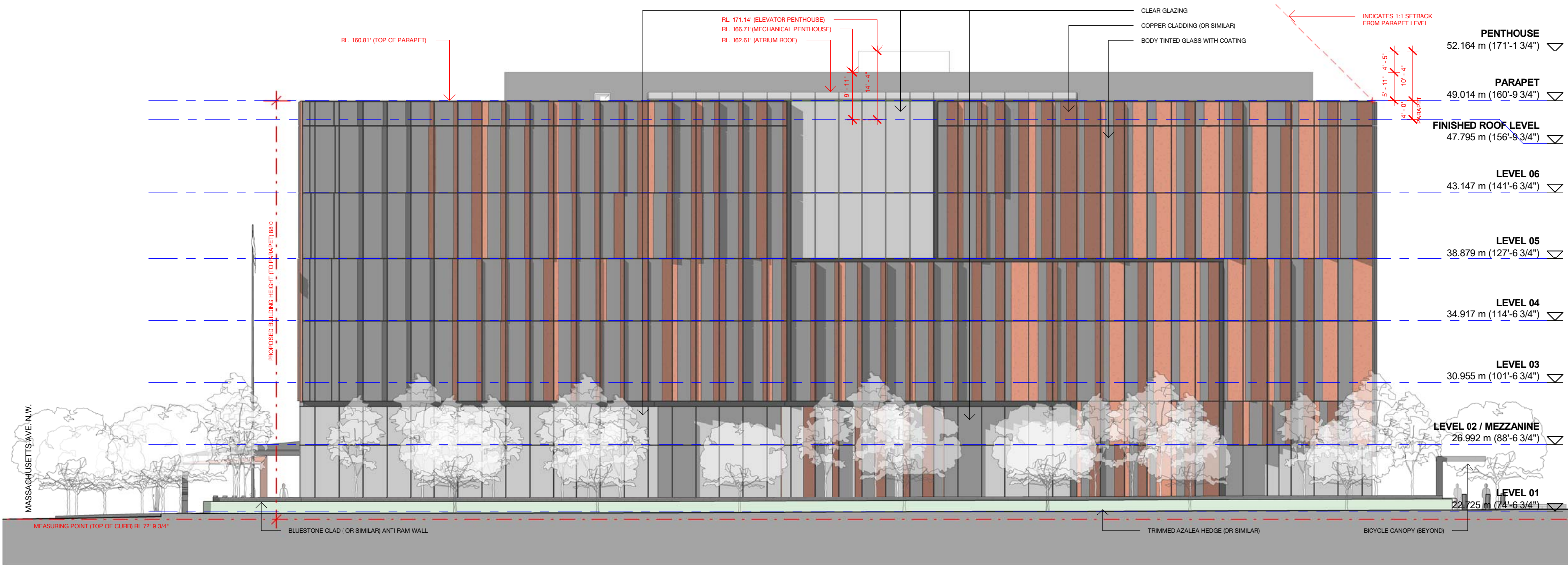




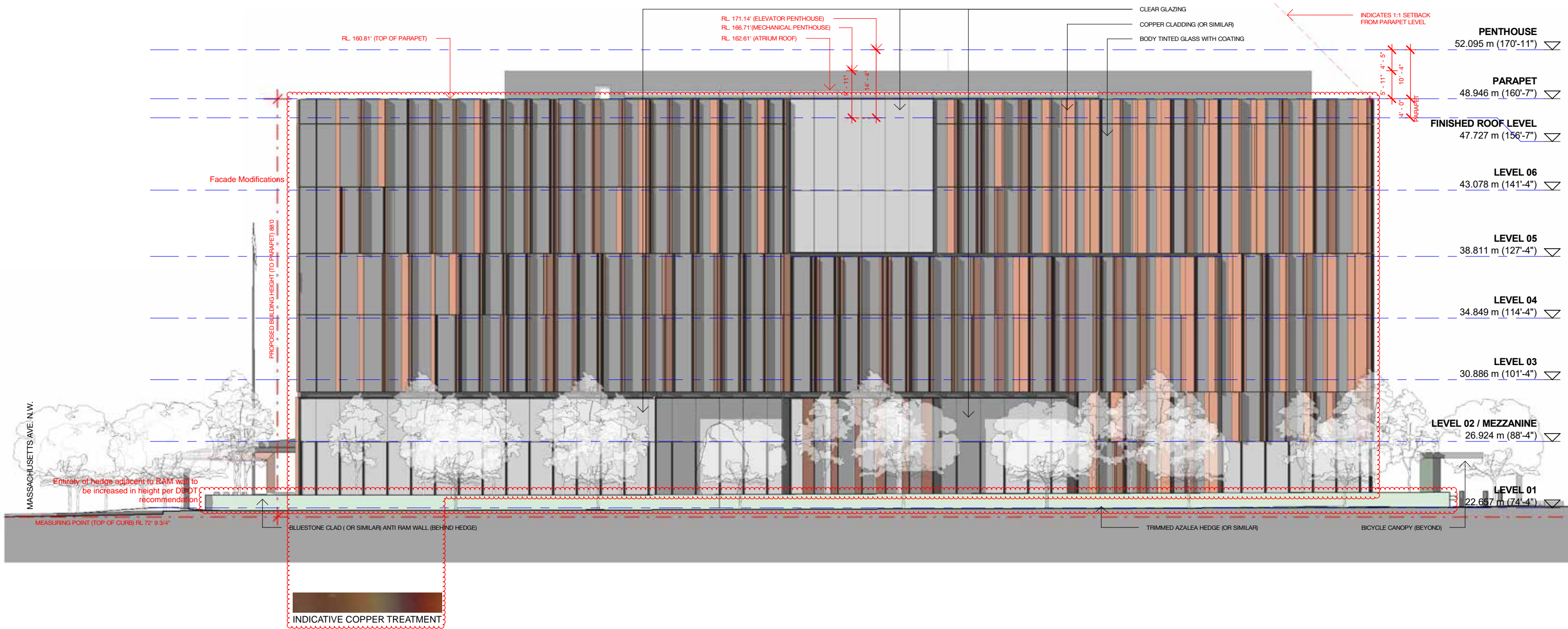
NOTE: FINAL BUILDING MATERIALS MAY VARY BASED ON AVAILABILITY AT THE TIME OF CONSTRUCTION, COST, MATERIAL COMPATIBILITY (GALVANIC CORROSION), AND/OR FABRICATION, BUT THE APPLICANT WILL MAINTAIN THE DESIGN INTENT, LEVEL OF QUALITY, AND COLOR RANGE OF MATERIALS SHOWN HEREIN.



NOTE: FINAL BUILDING MATERIALS MAY VARY BASED ON AVAILABILITY AT THE TIME OF CONSTRUCTION, COST, MATERIAL COMPATIBILITY (GALVANIC CORROSION), AND/OR FABRICATION, BUT THE APPLICANT WILL MAINTAIN THE DESIGN INTENT, LEVEL OF QUALITY, AND COLOR RANGE OF MATERIALS SHOWN HEREIN.



NOTE: FINAL BUILDING MATERIALS MAY VARY BASED ON AVAILABILITY AT THE TIME OF CONSTRUCTION, COST, MATERIAL COMPATIBILITY (GALVANIC CORROSION), AND/OR FABRICATION, BUT THE APPLICANT WILL MAINTAIN THE DESIGN INTENT, LEVEL OF QUALITY, AND COLOR RANGE OF MATERIALS SHOWN HEREIN.

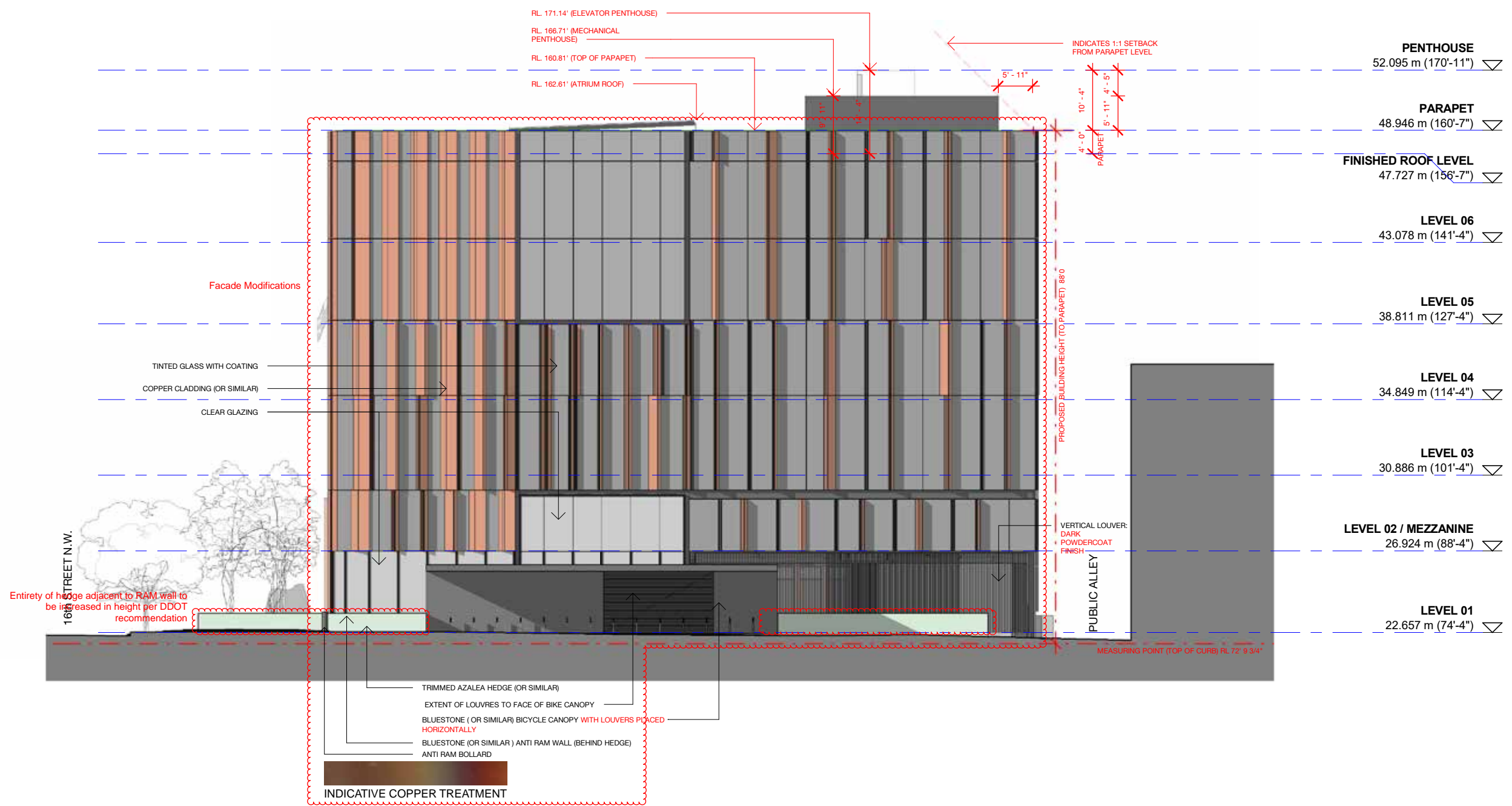


NOTE: FINAL BUILDING MATERIALS MAY VARY BASED ON AVAILABILITY AT THE TIME OF CONSTRUCTION, COST, MATERIAL COMPATIBILITY (GALVANIC CORROSION), AND/OR FABRICATION, BUT THE APPLICANT WILL MAINTAIN THE DESIGN INTENT, LEVEL OF QUALITY, AND COLOR RANGE OF MATERIALS SHOWN HEREIN.

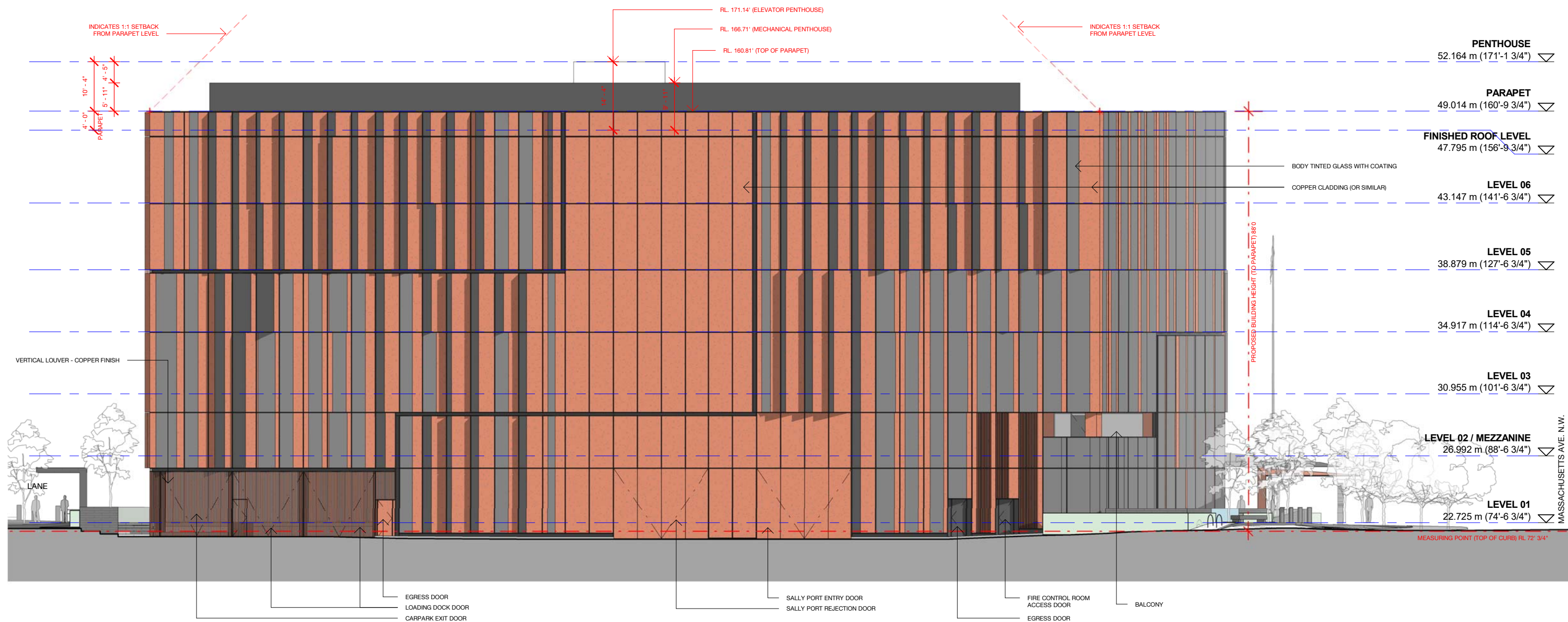


NOTE: FINAL BUILDING MATERIALS MAY VARY BASED ON AVAILABILITY AT THE TIME OF CONSTRUCTION, COST, MATERIAL COMPATIBILITY (GALVANIC CORROSION), AND/OR FABRICATION, BUT THE APPLICANT WILL MAINTAIN THE DESIGN INTENT, LEVEL OF QUALITY, AND COLOR RANGE OF MATERIALS SHOWN HEREIN.

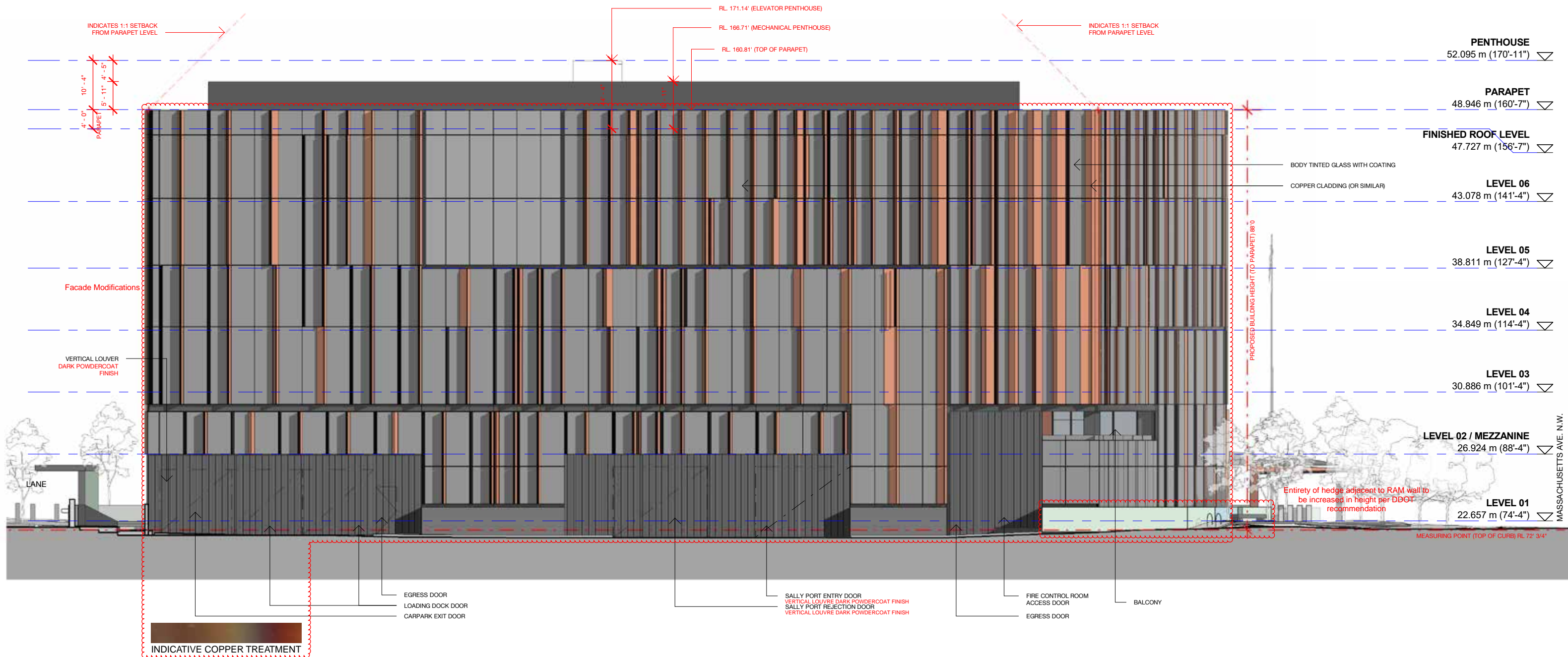




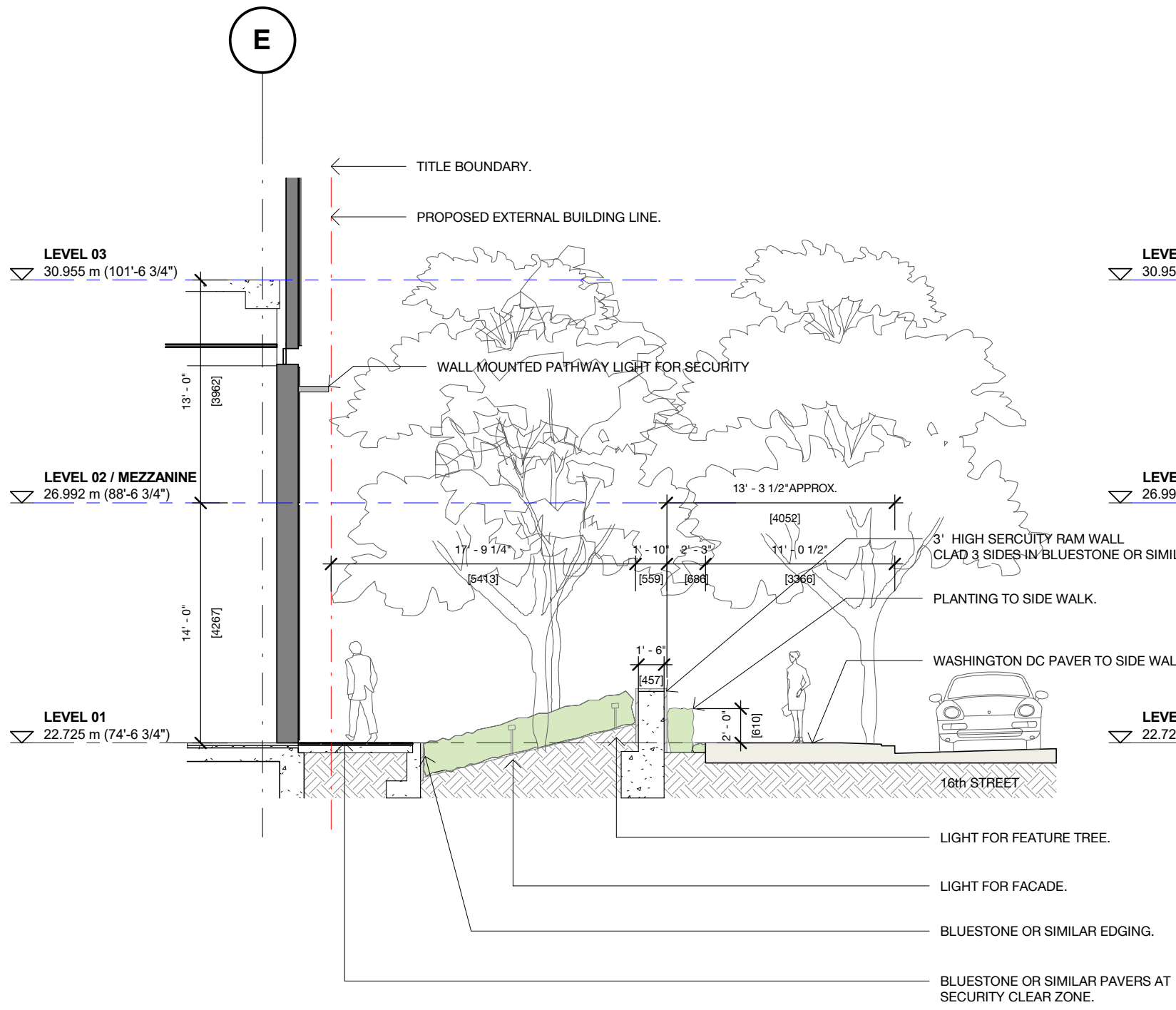
NOTE: FINAL BUILDING MATERIALS MAY VARY BASED ON AVAILABILITY AT THE TIME OF CONSTRUCTION, COST, MATERIAL COMPATIBILITY (GALVANIC CORROSION), AND/OR FABRICATION, BUT THE APPLICANT WILL MAINTAIN THE DESIGN INTENT, LEVEL OF QUALITY, AND COLOR RANGE OF MATERIALS SHOWN HEREIN.



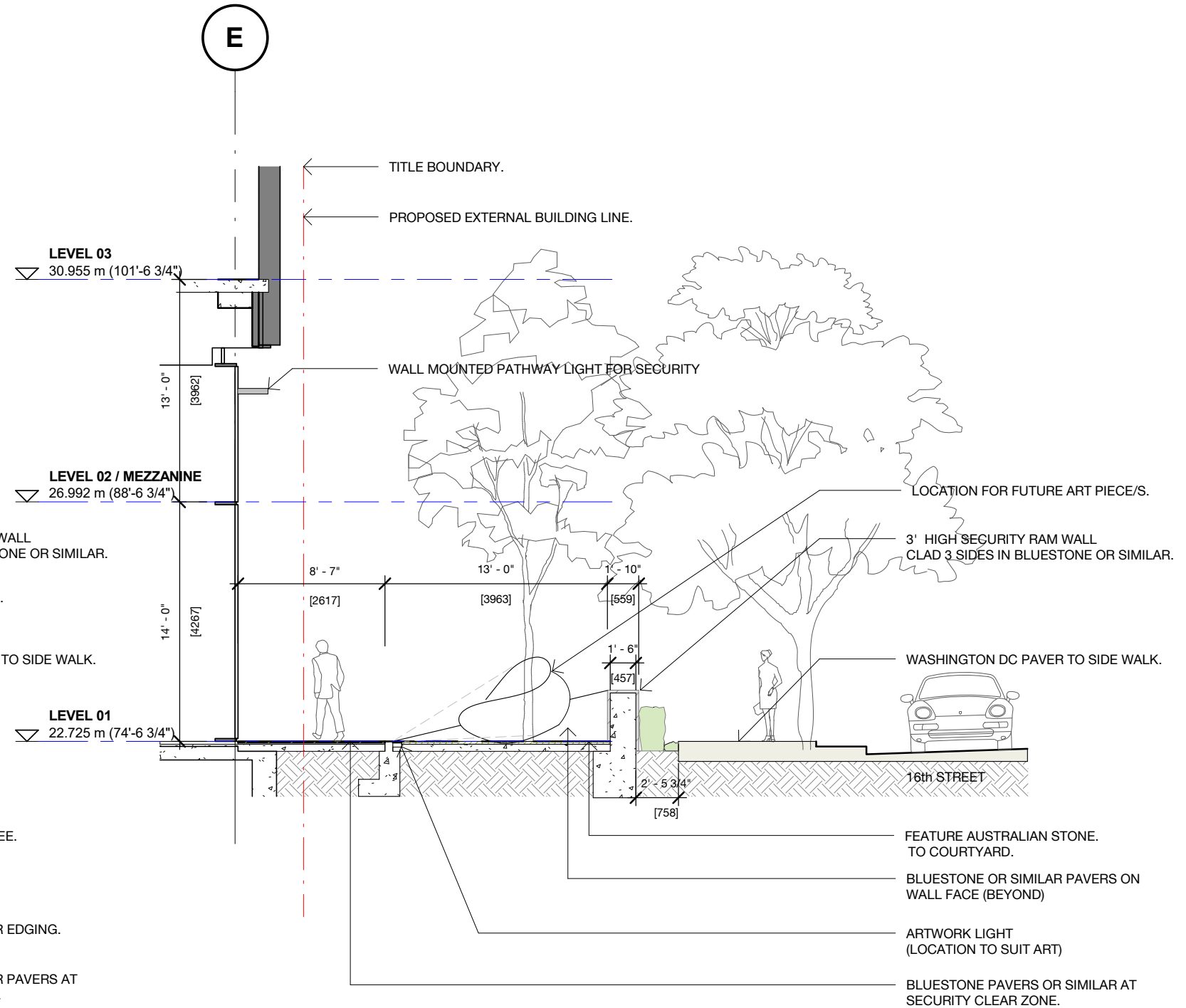
NOTE: FINAL BUILDING MATERIALS MAY VARY BASED ON AVAILABILITY AT THE TIME OF CONSTRUCTION, COST, MATERIAL COMPATIBILITY (GALVANIC CORROSION), AND/OR FABRICATION, BUT THE APPLICANT WILL MAINTAIN THE DESIGN INTENT, LEVEL OF QUALITY, AND COLOR RANGE OF MATERIALS SHOWN HEREIN.



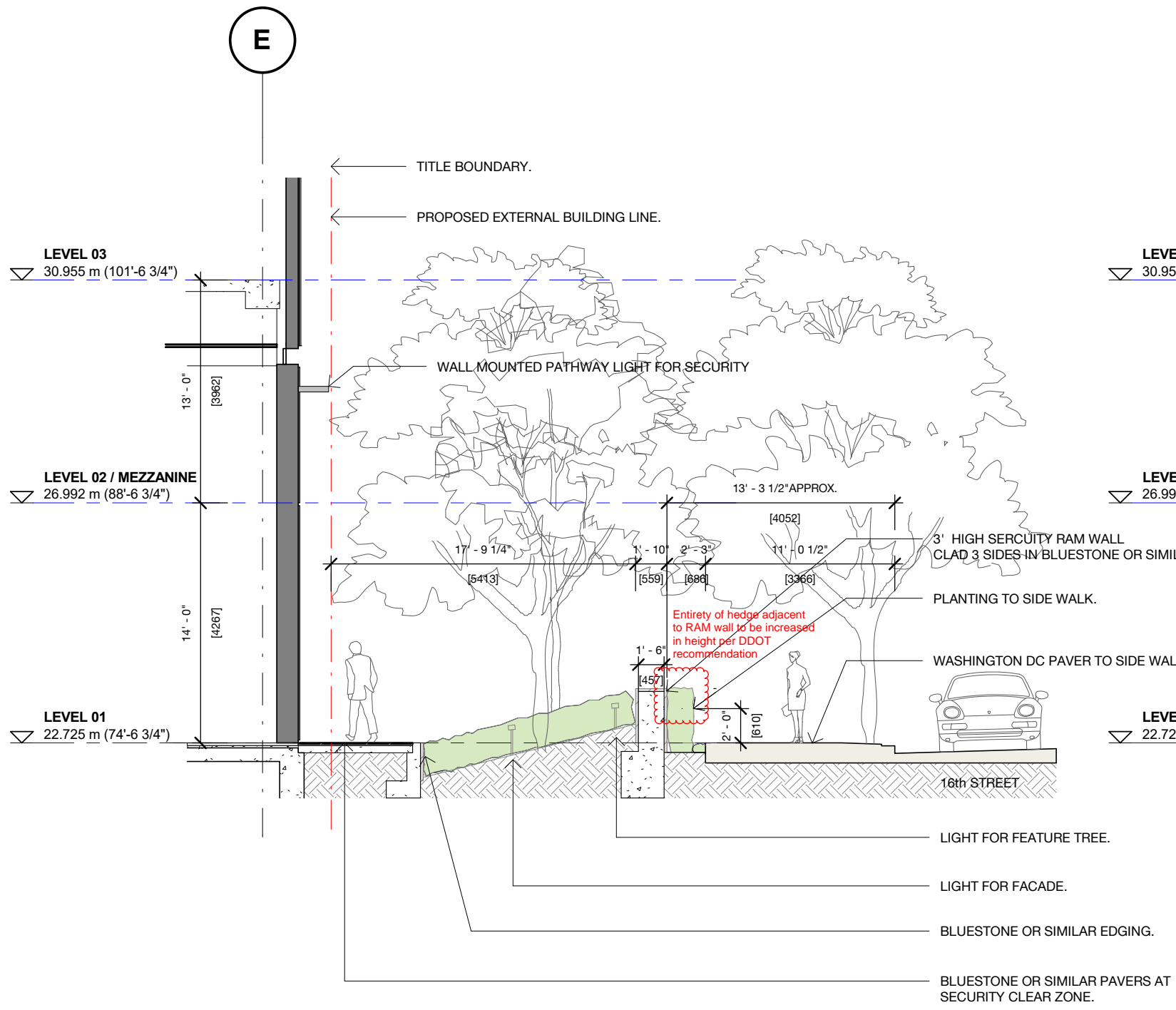
NOTE: FINAL BUILDING MATERIALS MAY VARY BASED ON AVAILABILITY AT THE TIME OF CONSTRUCTION, COST, MATERIAL COMPATIBILITY (GALVANIC CORROSION), AND/OR FABRICATION, BUT THE APPLICANT WILL MAINTAIN THE DESIGN INTENT, LEVEL OF QUALITY, AND COLOR RANGE OF MATERIALS SHOWN HEREIN.



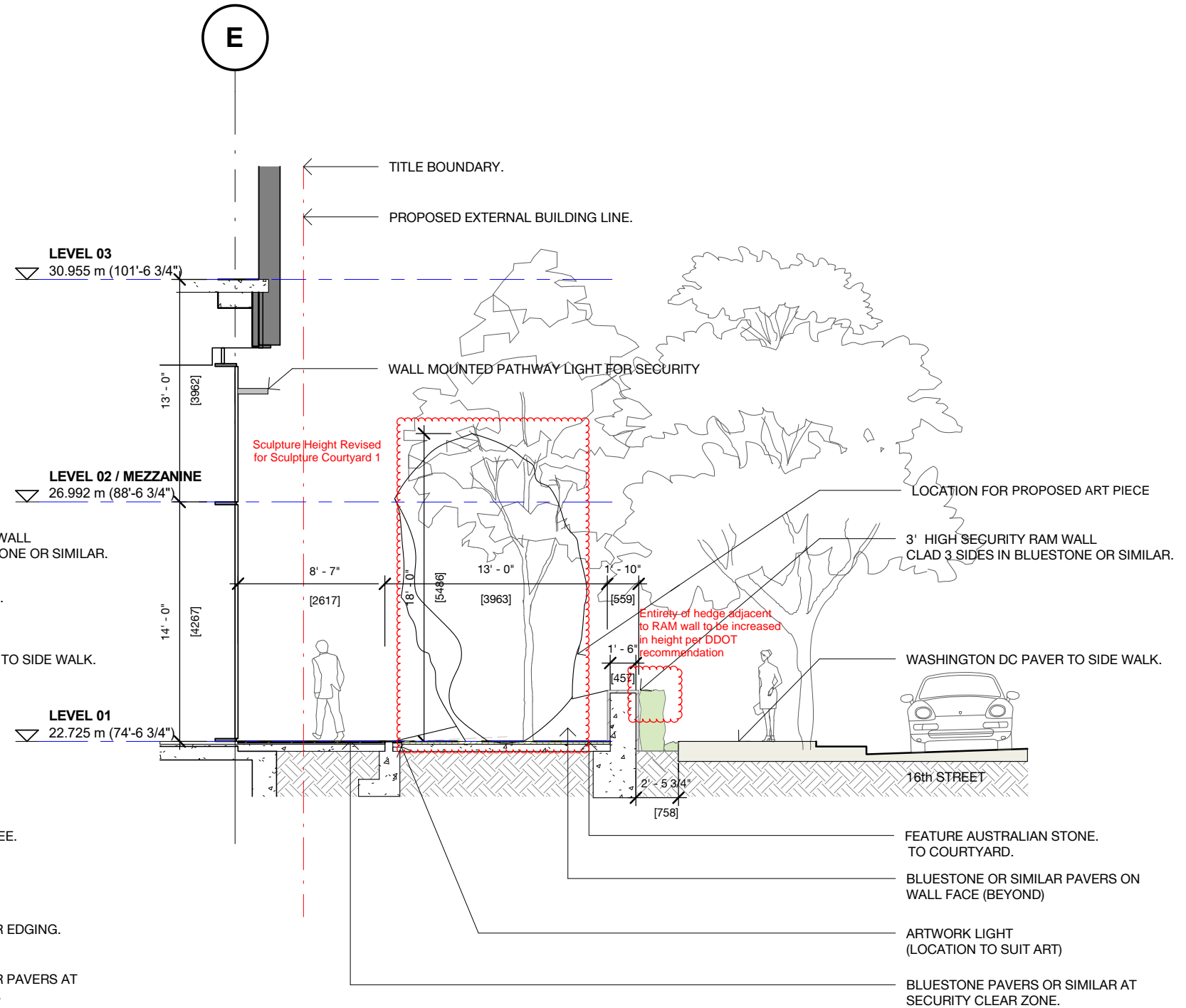
1 16th STREET TYPICAL LANDSCAPE INTERFACE  
Section 1/8" = 1'-0"



2 16th STREET TYPICAL COURTYARD INTERFACE  
Section 1/8" = 1'-0"

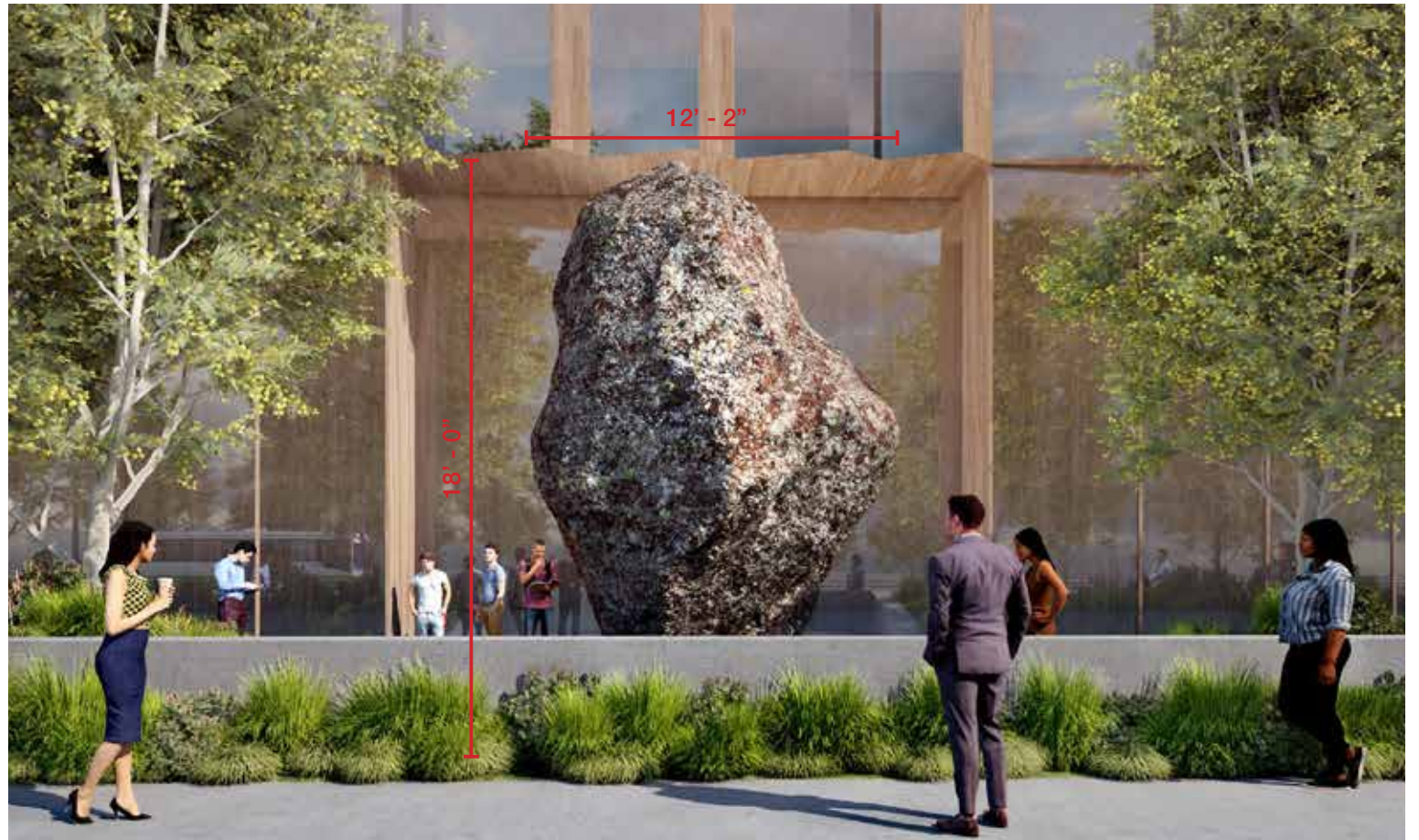


1 16th STREET TYPICAL LANDSCAPE INTERFACE  
Section 1/8" = 1'-0"



2 16th STREET TYPICAL SCULPTURE COURTYARD 1 INTERFACE  
Section 1/8" = 1'-0"

NOTE: THE INCREASE IN HEIGHT APPLIES TO COURTYARD 1 ONLY WITH NO CHANGES PROPOSED TO COURTYARDS 2 AND 3.



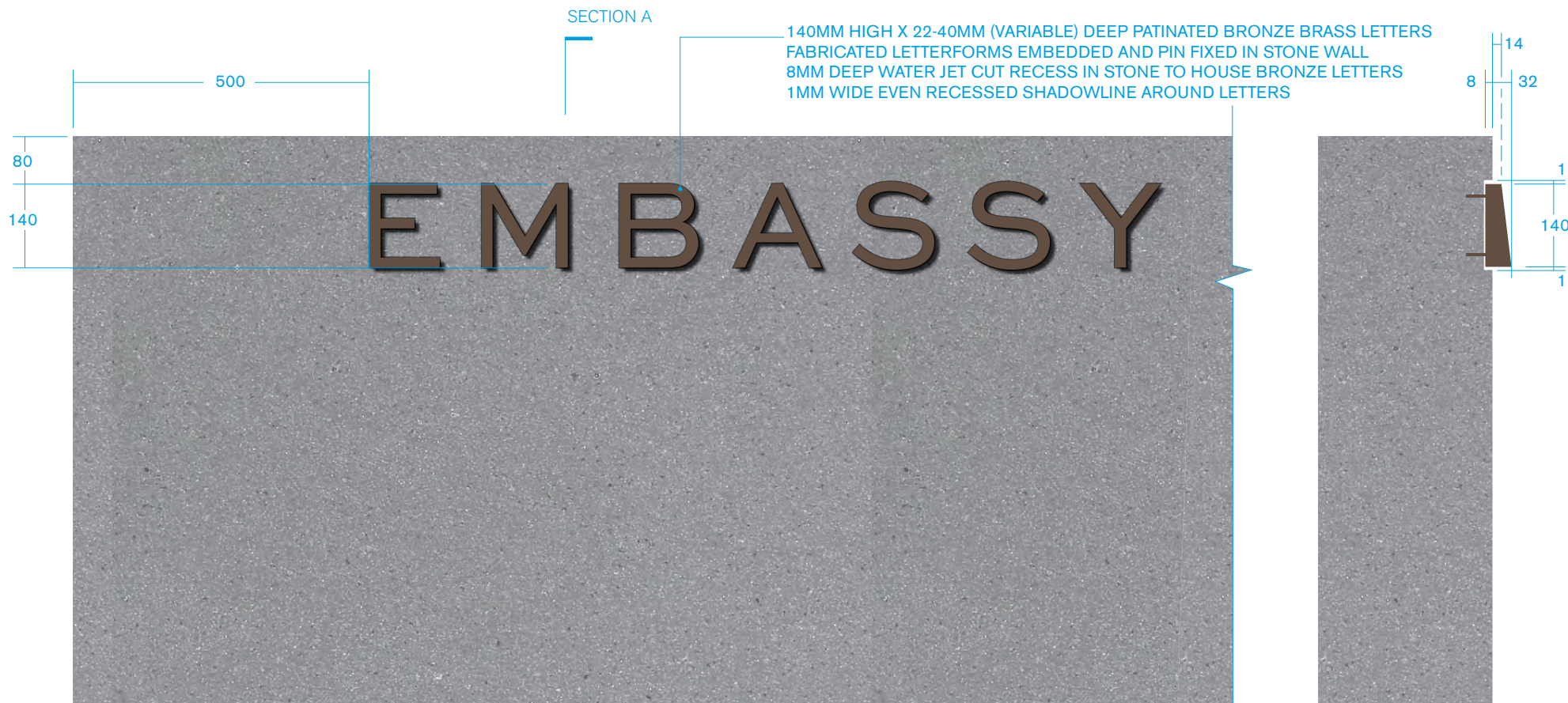
# PROPOSED COURTYARD 1 SCULPTURE

NO EQUIVALENT IN APPROVED PLANS

**EXT-01**  
**EMBASSY EXTERNAL IDENTIFICATION**

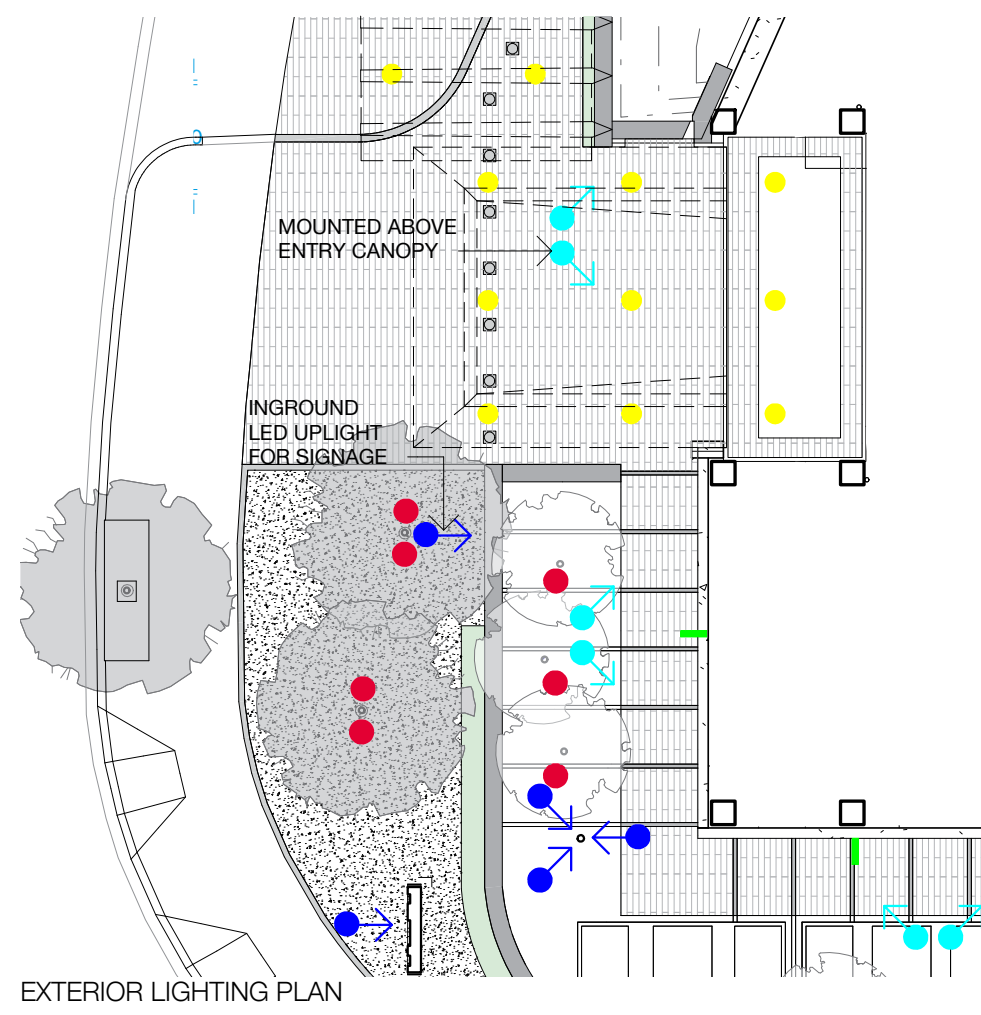
SPEC:  
 PATINATED BRONZE BRASS LETTERS  
 NON-DIRECTIONAL 'SCOTCHBRITE' FINISH

TYPEFACE:  
 SWEET SANS REGULAR, TRACKING SET +160  
 140MM CAP HEIGHT



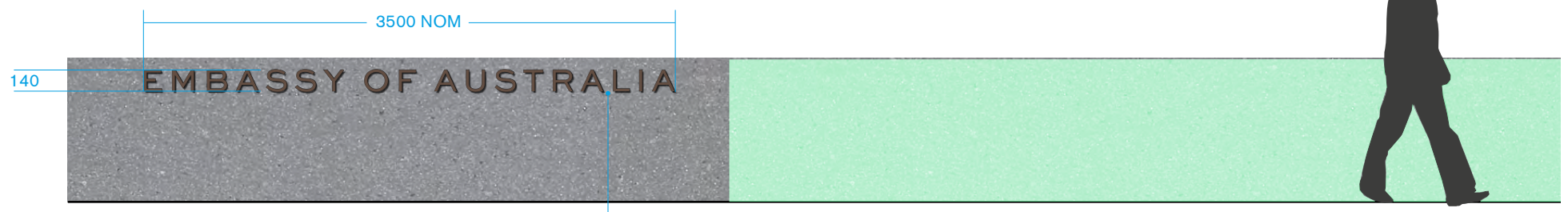
**EXT-01** EMBASSY EXTERNAL IDENTIFICATION  
 FRONT ELEVATION  
 SCALE 1:10

**SECTION A**  
 SCALE 1:10



**LIGHTING LAYOUT LEGEND**

- LIGHT POLE WITH ADJUSTABLE LED SPOTLIGHTS
- LED UPLIGHTS LANDSCAPE
- INTEGRATED LED STRIP
- LED DOWNLIGHTS WITHIN CANOPY
- INGROUND LED UPLIGHTS
- PATHWAY WALL LIGHT
- LED UPLIGHTS AIMED TO FACADE
- RECESSED LIGHT AT SEATING



**EXT-01** EMBASSY EXTERNAL IDENTIFICATION  
 FRONT ELEVATION  
 SCALE 1:40

140MM HIGH X 22-40MM (VARIABLE)  
 DEEP PATINATED BRONZE BRASS LETTERS

**PROPOSED BUILDING SIGNAGE**

NO EQUIVALENT IN APPROVED PLANS

**AUSTRALIAN  
EMBASSY**

**VIEW OF SOUTHERN  
FACADE- WITHOUT  
TREES**

**APPROVED**





# AUSTRALIAN EMBASSY

VIEW OF SOUTHERN  
FACADE- WITHOUT  
TREES

PROPOSED



# AUSTRALIAN EMBASSY

VIEW OF SOUTHERN  
FACADE - WITH 2ND  
ROW OF TREES

APPROVED



# AUSTRALIAN EMBASSY

VIEW OF SOUTHERN  
FACADE - WITH 2ND  
ROW OF TREES

PROPOSED



# AUSTRALIAN EMBASSY

VIEW OF SOUTHERN  
FACADE - WITH  
STREET TREES

APPROVED



# AUSTRALIAN EMBASSY

VIEW OF SOUTHERN  
FACADE - WITH  
STREET TREES

PROPOSED



# AUSTRALIAN EMBASSY

MORNING VIEW MAIN  
ENTRANCE - WITHOUT  
TREES

APPROVED



# AUSTRALIAN EMBASSY

MORNING VIEW MAIN  
ENTRANCE - WITHOUT  
TREES

PROPOSED



# AUSTRALIAN EMBASSY

MORNING VIEW MAIN  
ENTRANCE - WITH  
2ND ROW OF TREES

APPROVED





# AUSTRALIAN EMBASSY

MORNING VIEW MAIN  
ENTRANCE - WITH  
2ND ROW OF TREES

PROPOSED



**AUSTRALIAN  
EMBASSY**

**MORNING VIEW MAIN  
ENTRANCE - WITH  
STREET TREES**

**APPROVED**



# AUSTRALIAN EMBASSY

MORNING VIEW MAIN  
ENTRANCE - WITH  
STREET TREES

PROPOSED



**AUSTRALIAN  
EMBASSY**

**EAST ELEVATION -  
WITHOUT TREES**

**APPROVED**



**AUSTRALIAN  
EMBASSY**

**EAST ELEVATION -  
WITHOUT TREES**

**PROPOSED**



# AUSTRALIAN EMBASSY

EAST ELEVATION -  
WITH 2ND ROW OF  
TREES

APPROVED



# AUSTRALIAN EMBASSY

EAST ELEVATION -  
WITH 2ND ROW OF  
TREES

PROPOSED



**AUSTRALIAN  
EMBASSY**

**EAST ELEVATION -  
WITH STREET TREES**

**APPROVED**





**AUSTRALIAN  
EMBASSY**

**EAST ELEVATION -  
WITH STREET TREES**

**PROPOSED**



# AUSTRALIAN EMBASSY

PEDESTRIAN  
SEQUENCE 01  
- WITHOUT TREES

VIEW LOOKING NORTH  
ALONG 16TH STREET  
N.W.



# AUSTRALIAN EMBASSY

PEDESTRIAN  
SEQUENCE 01  
- WITH 2ND ROW OF  
TREES

VIEW LOOKING NORTH  
ALONG 16TH STREET  
N.W.



# AUSTRALIAN EMBASSY

PEDESTRIAN  
SEQUENCE 01  
- WITH STREET TREES

VIEW LOOKING NORTH  
ALONG 16TH STREET  
N.W.



# AUSTRALIAN EMBASSY

PEDESTRIAN  
SEQUENCE 02  
- WITHOUT TREES

VIEW LOOKING NORTH  
ALONG 16TH STREET  
N.W.



NO EQUIVALENT IN APPROVED PLANS

# AUSTRALIAN EMBASSY

PEDESTRIAN  
SEQUENCE 02  
- WITH 2ND ROW OF  
TREES

VIEW LOOKING NORTH  
ALONG 16TH STREET  
N.W.



NO EQUIVALENT IN APPROVED PLANS

# AUSTRALIAN EMBASSY

## PEDESTRIAN SEQUENCE 02 - WITH STREET TREES

## VIEW LOOKING NORTH ALONG 16TH STREET N.W.



# AUSTRALIAN EMBASSY

## PEDESTRIAN SEQUENCE 03 - WITHOUT TREES

### VIEW LOOKING SOUTH ALONG 16TH STREET N.W.



NO EQUIVALENT IN APPROVED PLANS



# AUSTRALIAN EMBASSY

PEDESTRIAN  
SEQUENCE 03  
- WITH 2ND ROW OF  
TREES

VIEW LOOKING SOUTH  
ALONG 16TH STREET  
N.W.



# AUSTRALIAN EMBASSY

## PEDESTRIAN SEQUENCE 03 - WITH STREET TREES

### VIEW LOOKING SOUTH ALONG 16TH STREET N.W.



NO EQUIVALENT IN APPROVED PLANS

# AUSTRALIAN EMBASSY

## PEDESTRIAN SEQUENCE 04 - WITHOUT TREES

### VIEW LOOKING SOUTH TOWARDS SCOTTS CIRCLE



NO EQUIVALENT IN APPROVED PLANS

# AUSTRALIAN EMBASSY

PEDESTRIAN  
SEQUENCE 04  
- WITH 2ND ROW OF  
TREES

VIEW LOOKING SOUTH  
TOWARDS SCOTTS  
CIRCLE



NO EQUIVALENT IN APPROVED PLANS

# AUSTRALIAN EMBASSY

## PEDESTRIAN SEQUENCE 04 - WITH STREET TREES

### VIEW LOOKING SOUTH TOWARDS SCOTTS CIRCLE



NO EQUIVALENT IN APPROVED PLANS