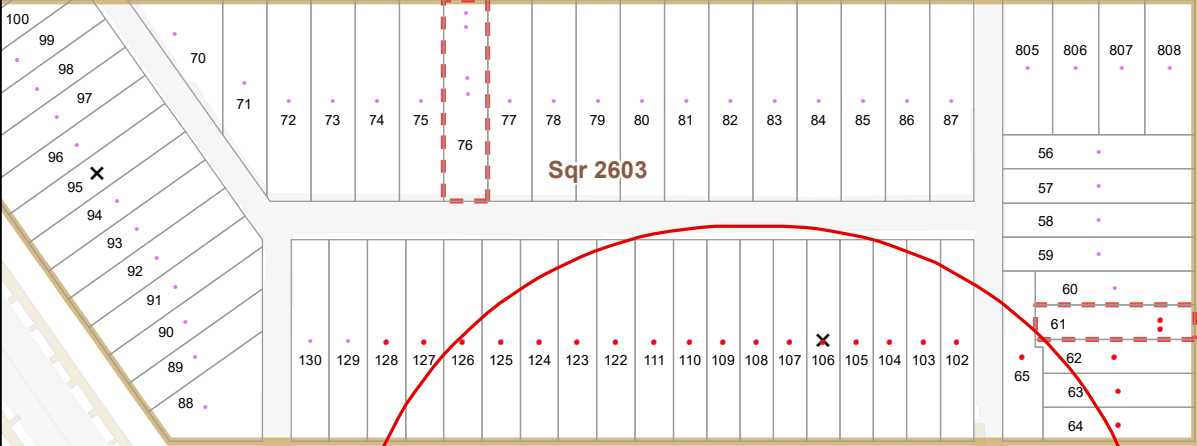
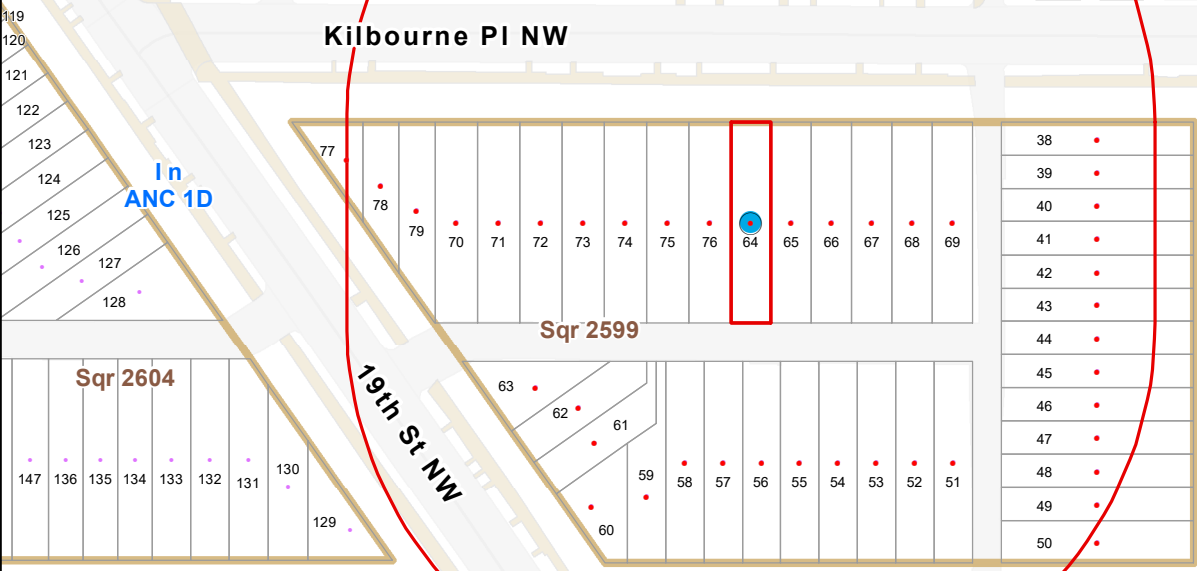


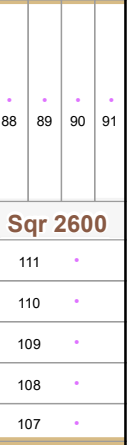
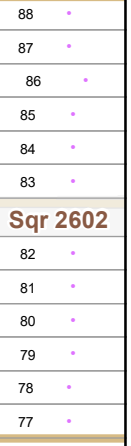
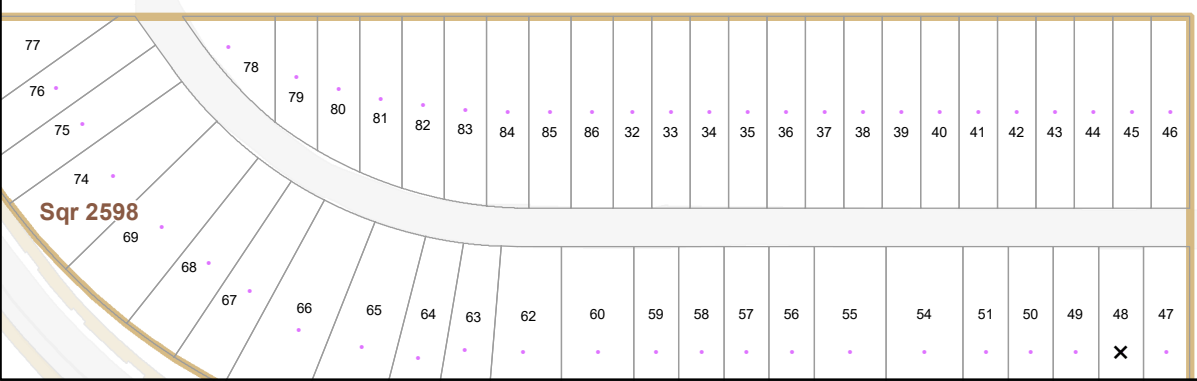
Lamont St NW



Kilbourne Pl NW



Kenyon St NW



In ANC 1D

19th St NW

18th St NW

- Subject Property
- Radius
- Ownership Lots
- Condo Lots
- DC Squares
- ANC Boundary
- Mailing Address Unavailable

### MyTax DC Radius Map Request

Subject Property ID: 2599 0064



DC Office of Tax and Revenue  
 Real Property Assessment Division  
 Maps and Titles Assessment Roll  
 Geographic Information Systems



Board of Zoning Adjustment  
 District of Columbia  
 CASE NO. 21477  
 EXHIBIT NO. 13

Print Date: 4/7/2026  
 For general planning purposes

BRAUN, DEVIN

3162 18TH ST NW # 1  
WASHINGTON DC 20010-2636

HURLEY, MIKELLA M

3162 18TH ST NW # 2  
WASHINGTON DC 20010-2636

STEWART, HEATHER

3608 VAN NESS ST NW  
WASHINGTON DC 20008-3129

BURNETTE, O S

3158 18TH ST NW  
WASHINGTON DC 20010-2636

JAMES A DECHAINED TRUSTEE

3080 TUDOR HALL RD  
RIVA MD 21140-1324

GREITZER, SHIRLEY

1842 PARK RD NW  
WASHINGTON DC 20010-1019

GLADYS M MITCHELL TRUSTEE

1807 KILBOURNE PL NW  
WASHINGTON DC 20010-2622

DEHANAS, CHRISTOPHER A

1308 CLIFTON ST NW APT 312  
WASHINGTON DC 20009-7031

CHALMERS, CHRISTINA V

8213 SLIGO CREEK PKWY  
TAKOMA PARK MD 20912-6203

LOEB, ISAAC

1813 KILBOURNE PL NW  
WASHINGTON DC 20010-2622

BALIJEPAI, ARVIND K

HANSON, KATHLEEN D

1817 KILBOURNE PL NW  
WASHINGTON DC 20010-2622

LONDONO, ROSARIO

1819 KILBOURNE PL NW  
WASHINGTON DC 20010-2622

JOHNSON, DARRELL W

1232 FAIRMONT ST NW  
WASHINGTON DC 20009-5322

KRAMER, DEIRDRE W

1823 KILBOURNE PL NW  
WASHINGTON DC 20010-2622

THROWBRIDGE, LEANN M

1825 KILBOURNE PL NW  
WASHINGTON DC 20010-2622

MARK SEIFERT TRUSTEE

1839 IRVING ST NW  
WASHINGTON DC 20010-2614

THIESS, F N

1839 IRVING ST NW  
WASHINGTON DC 20010-2614

FRED JACK SOLOWEY TRUSTEE

1831 KILBOURNE PL NW  
WASHINGTON DC 20010-2622

CAVANAUGH, MICHAEL J

1833 KILBOURNE PL NW  
WASHINGTON DC 20010-2622

WINGENDER, LESLIE M

1835 KILBOURNE PL NW  
WASHINGTON DC 20010-2622

BENJAMIN WATKINS TRUSTEE

1837 KILBOURNE PL NW  
WASHINGTON DC 20010-2622

HUSAIN, CAROL A

1839 KILBOURNE PL NW  
WASHINGTON DC 20010-2622

ROBERT R MESSICK TRUSTEE

3989 PEACH ORCHARD RD  
MC CONNELLSBURG PA 17233-8837

BELL, SAMUEL A

3122 18TH ST NW  
WASHINGTON DC 20010-2608

SANTIAGO SEIJAS GONZALEZ TRUSTEE

3120 18TH ST NW  
WASHINGTON DC 20010-2608

JANICE L LANDER TRUSTEE

3118 18TH ST NW  
WASHINGTON DC 20010-2608

RIVERA, CLARA E

3116 18TH ST NW  
WASHINGTON DC 20010-2608

SCHROPP, SIMON A

3114 18TH ST NW  
WASHINGTON DC 20010-2608

WILSON, MARY K

3112 18TH ST NW  
WASHINGTON DC 20010-2608

AHMED, ZEENAT A

3110 18TH ST NW  
WASHINGTON DC 20010-2608

AHMAD, MUNEEER

3108 18TH ST NW  
WASHINGTON DC 20010-2608

THE EUGENE N GURENKO TRUSTEE

3106 18TH ST NW  
WASHINGTON DC 20010-2608

CAMPBELL, ALICE M

3104 18TH ST NW  
WASHINGTON DC 20010-2608

HOANG, AMY C

3102 18TH ST NW  
WASHINGTON DC 20010-2608

CONSUELO A RICART TRUSTEE

1801 KENYON ST NW  
WASHINGTON DC 20010-2618

LEVITAN, RACHEL S

1805 KENYON ST NW  
WASHINGTON DC 20010-2618

HAMILTON, CONSTANCE A

1807 KENYON ST NW  
WASHINGTON DC 20010-2618

CLAUDET, MARIE

1809 KENYON ST NW  
WASHINGTON DC 20010-2618

WALKER, MICHAEL L

1811 KENYON ST NW  
WASHINGTON DC 20010-2618

JERKINS, JAYNE A

1813 KENYON ST NW  
WASHINGTON DC 20010-2618

WHITE, ROMMEL

1815 KENYON ST NW  
WASHINGTON DC 20010-2618

JAMES N M WHITMAN

1817 KENYON ST NW  
WASHINGTON DC 20010-2618

DAGLAS, CRISTINA

1819 KENYON ST NW  
WASHINGTON DC 20010-2618

JOHN P SONTAG CO- TRUSTEE

1821 KENYON ST NW  
WASHINGTON DC 20010-2618

ELMALEH, DAVID J

3301 PENNSY DR  
HYATTSVILLE MD 20785-1606

THE NANCY J GARRUBA 2015  
REVOCABLE LIVING TRUST

3103 19TH ST NW  
WASHINGTON DC 20010-2609

STOLP, SIMON

3105 19TH ST NW  
WASHINGTON DC 20010-2609

CAHOON, J C

3107 19TH ST NW  
WASHINGTON DC 20010-2609

THE BIALYSTOK TRUST

HOFFLAND, ERIK A

1810 KILBOURNE PL NW  
WASHINGTON DC 20010-2623

HOFFMAN, IAN D

1808 KILBOURNE PL NW  
WASHINGTON DC 20010-2623

MALONI, WILLIAM R

1806 KILBOURNE PL NW  
WASHINGTON DC 20010-2623

MINER, KATHLEEN M

1804 KILBOURNE PL NW  
WASHINGTON DC 20010-2623

CORNFORTH, JEREMY A

175 N BEACON ST  
HARTFORD CT 06105-2246

ROSEN, JEFFREY

1734 PALMER RD  
NEEDMORE PA 17238-8710

SIMPKINS, C M

1824 KILBOURNE PL NW  
WASHINGTON DC 20010-2623

STORM, KEVIN M

1822 KILBOURNE PL NW  
WASHINGTON DC 20010-2623

KIEVE, DAVID K

1820 KILBOURNE PL NW  
WASHINGTON DC 20010-2623

DIXON, WELF C

1818 KILBOURNE PL NW  
WASHINGTON DC 20010-2623

GOLDMAN, IRA H

1816 KILBOURNE PL NW  
WASHINGTON DC 20010-2623

SHEILA E OLEARY TRUSTEE

1814 KILBOURNE PL NW  
WASHINGTON DC 20010-2623

YELIN, LEWIS

1832 KILBOURNE PL NW  
WASHINGTON DC 20010-2623

BOYD, LYNZETTE M

1830 KILBOURNE PL NW  
WASHINGTON DC 20010-2623

MICHAELSEN, SOFIE F

1828 KILBOURNE PL NW  
WASHINGTON DC 20010-2623