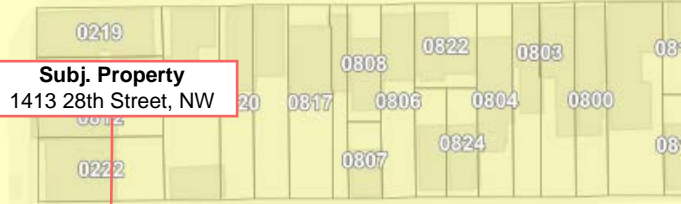
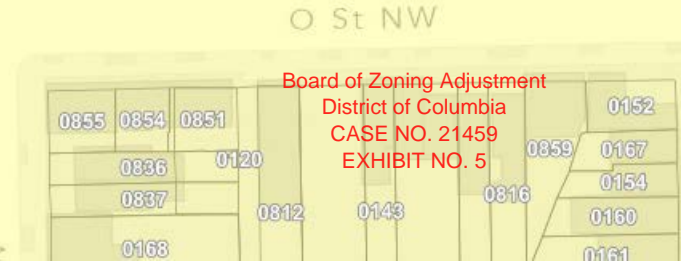
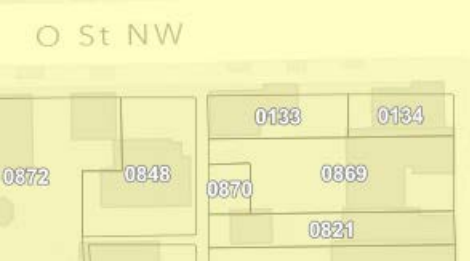
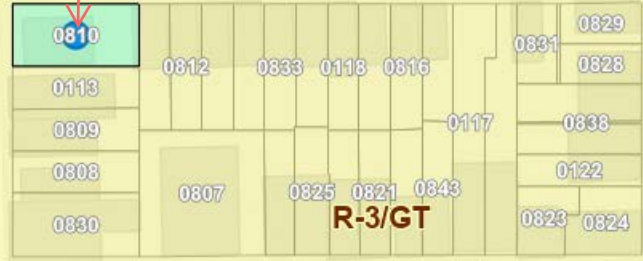


28th St NW

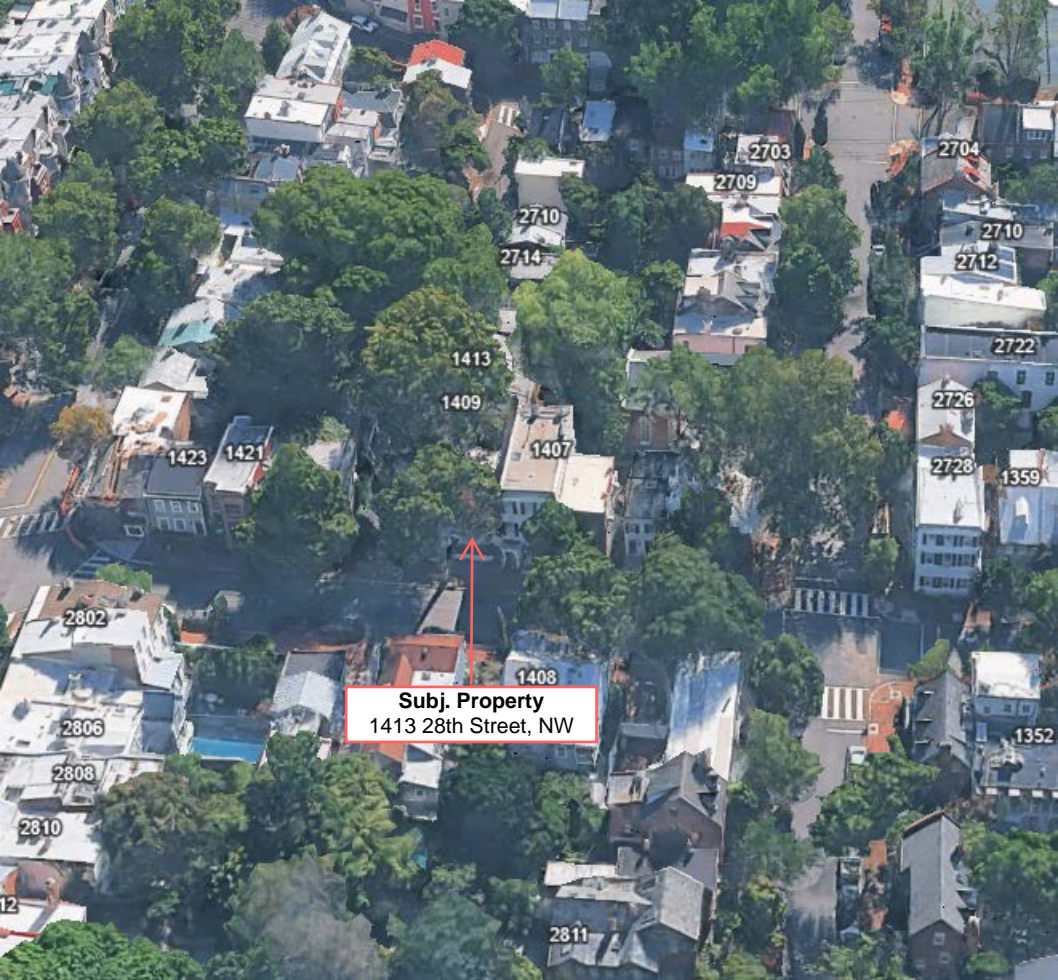
Subj. Property
1413 28th Street, NW



0810



Board of Zoning Adjustment
District of Columbia
CASE NO. 21459
EXHIBIT NO. 5



Subj. Property
1413 28th Street, NW

2703

2704

2709

2710

2710

2714

2712

1413

2722

1409

2726

1423

1421

1407

2728

1359

2802

1408

2806

1352

2808

2810

2811

12



Subj. Property
1413 28th Street, NW

1409 28th Street, NW



Subj. Property
1413 28th Street, NW

1409 28th Street, NW



1417 28th Street, NW

Subj. Property
1413 28th Street, NW

1409 28th Street, NW

1417 28th Street, NW

Subj. Property
1413 28th Street, NW

1409 28th Street, NW



2726 Poplar Street, NW

Subj. Property
1413 28th Street, NW

1417 28th Street, NW



Subj. Property
1413 28th Street, NW

