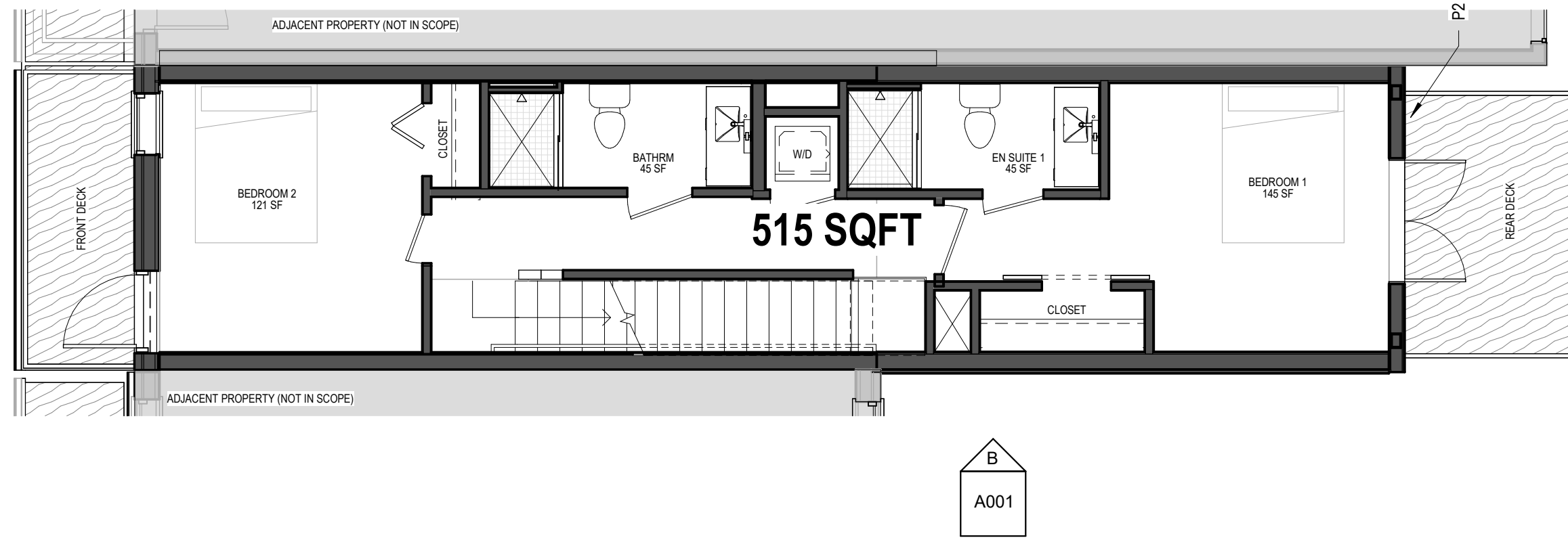
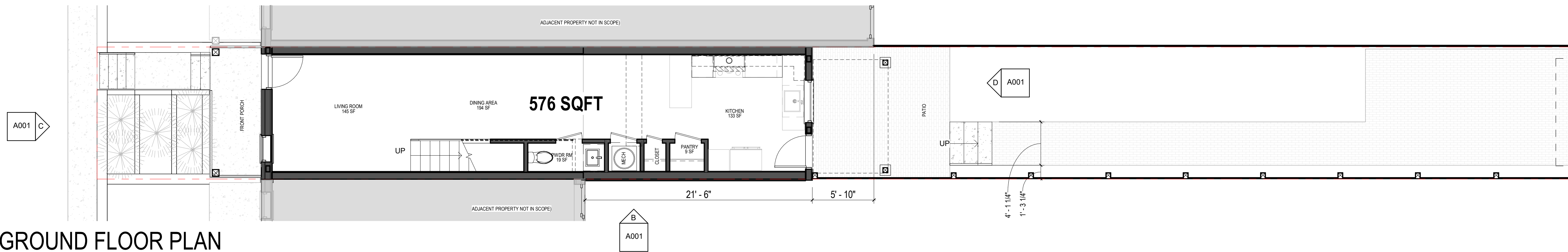


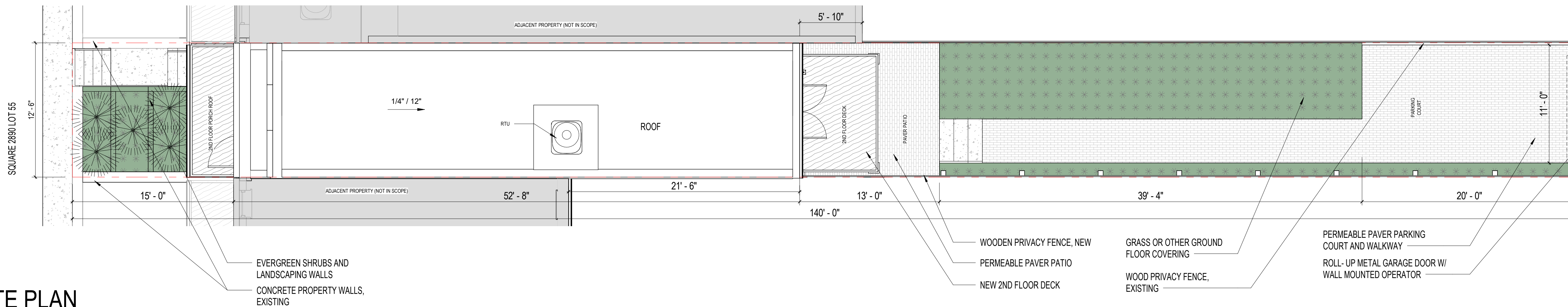
D THIRD FLOOR
3/16" = 1'-0"



C SECOND FLOOR
3/16" = 1'-0"



B GROUND FLOOR PLAN
3/16" = 1'-0"



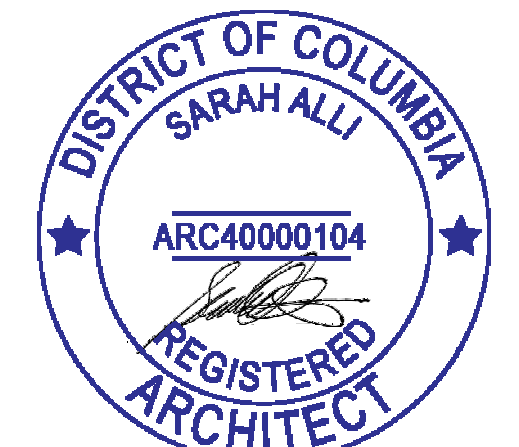
A SITE PLAN
3/16" = 1'-0"

SADIE DESIGN, LLC
sarah@sadiedesignllc.com

STRUCTURAL ENGINEER
BEL ENGINEERING, LLC
240.830.2555

MEP ENGINEER
VECO ENGINEERS
571.758.3262

GENERAL CONTRACTOR
CR8 CONSTRUCTION, LLC



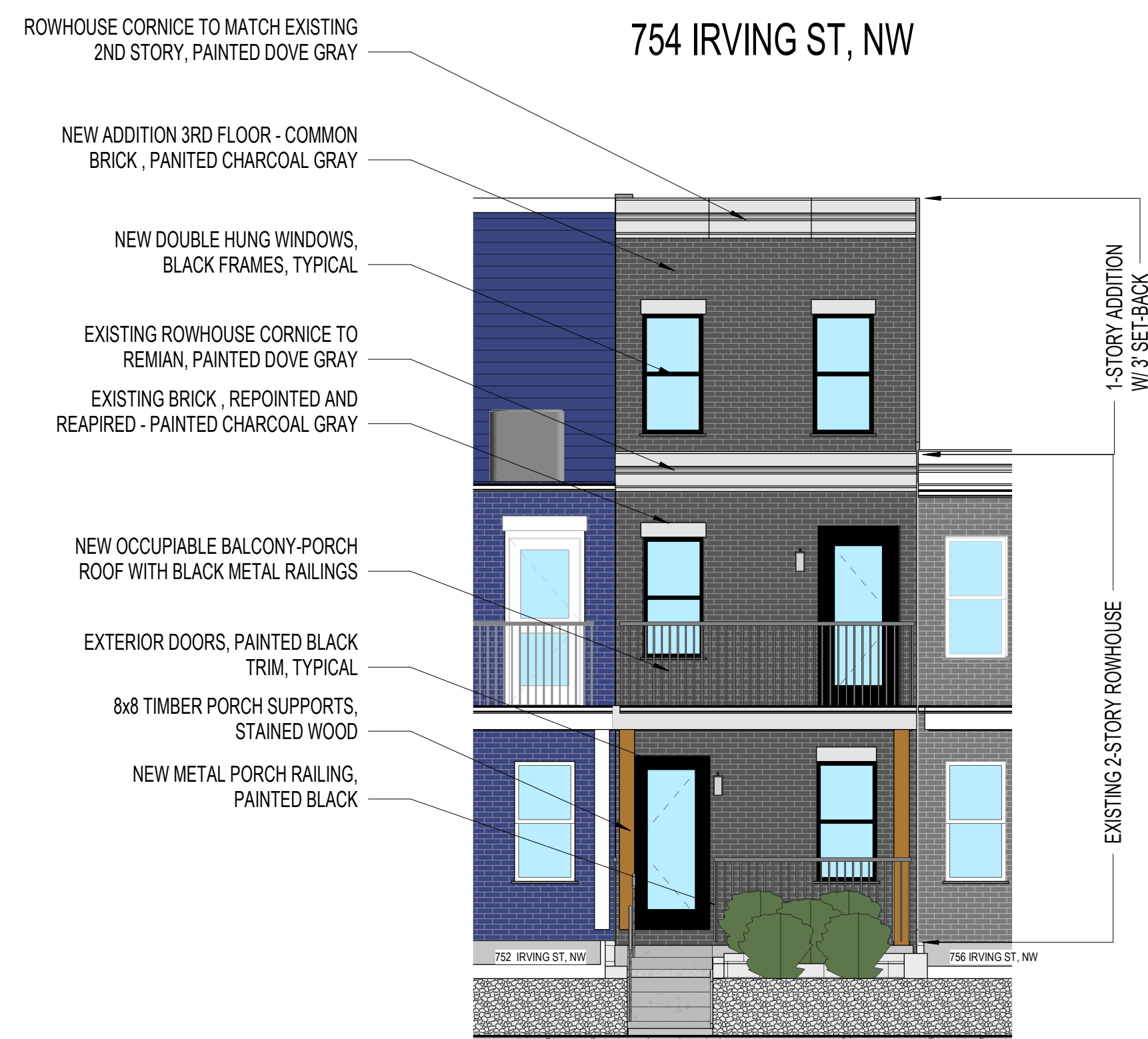
754 Irving Street, NW

SITE + FLOOR PLANS

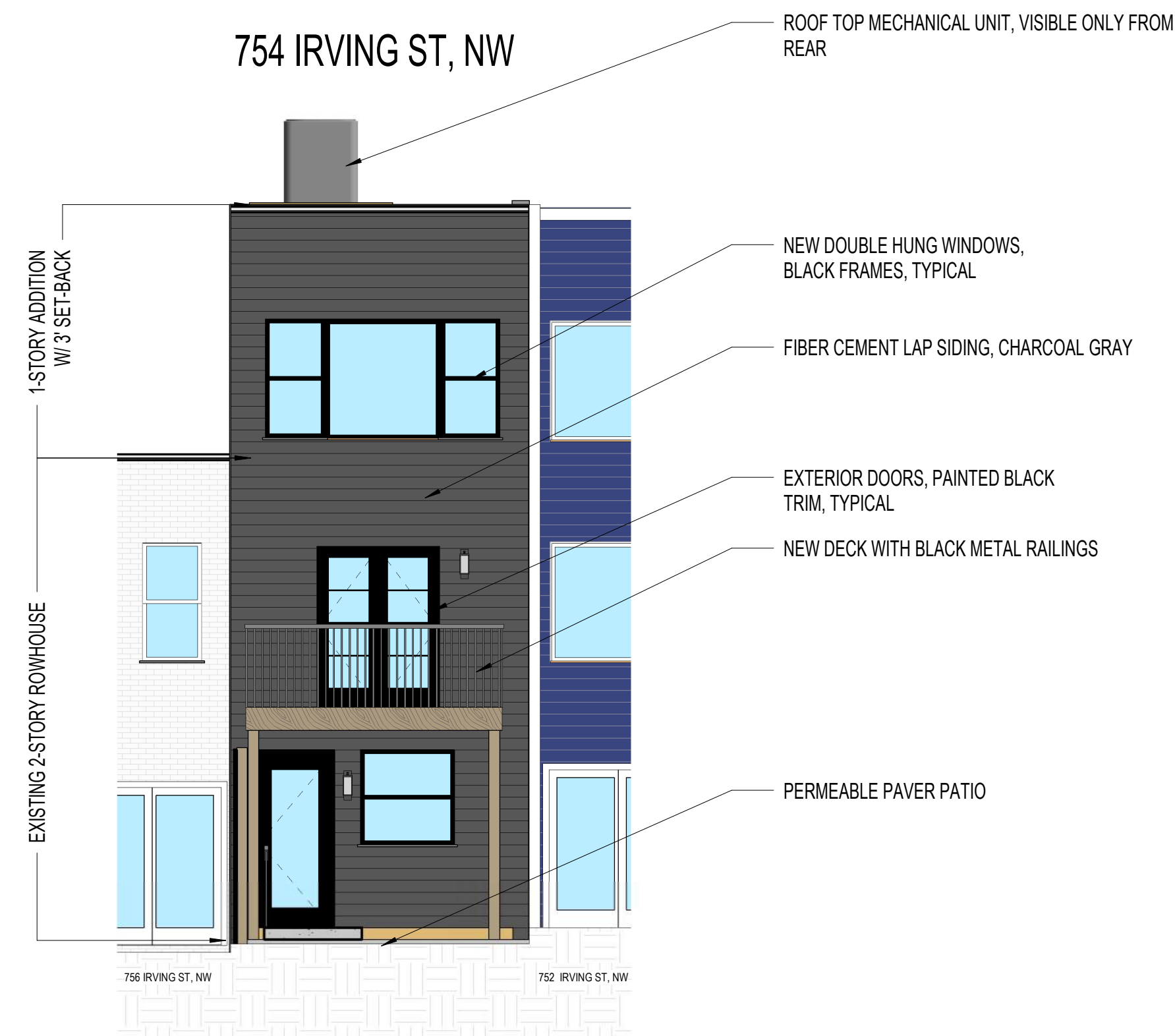
Date: 02/01/2026
Drawn by: SA

A000

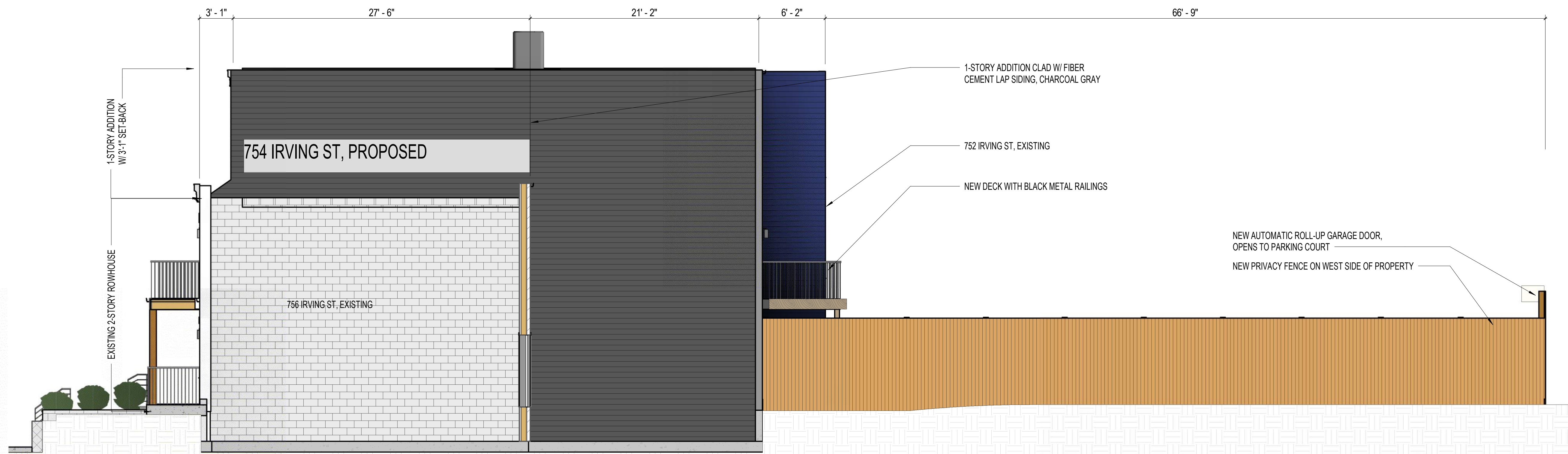
Scale: Board of Zoning Adjustment, District of Columbia, Case No. ZDC-2023-0057, Exhibit No. 4



C FRONT ELEVATION_ NORTH
3/16" = 1'-0"



D REAR ELEVATION_ SOUTH
3/16" = 1'-0"



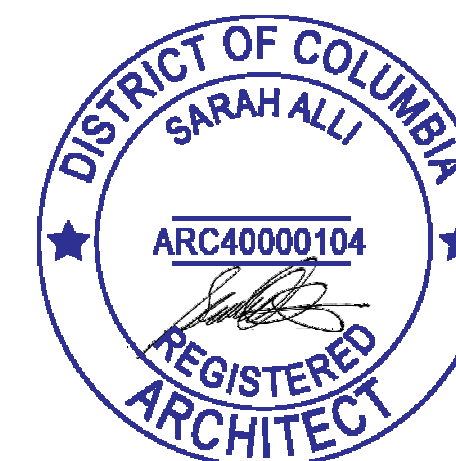
B SIDE ELEVATION_ WEST
3/16" = 1'-0"

SADIE DESIGN, LLC
sarah@sadiedesignllc.com

STRUCTURAL ENGINEER
BEL ENGINEERING, LLC
240.830.2555

MEP ENGINEER
VECO ENGINEERS
571.758.3262

GENERAL CONTRACTOR
CR8 CONSTRUCTION, LLC



754 Irving Street, NW

ELEVATIONS

Date 02/01/2026
Drawn by SA

A001

Scale 3/16" = 1'-0"