

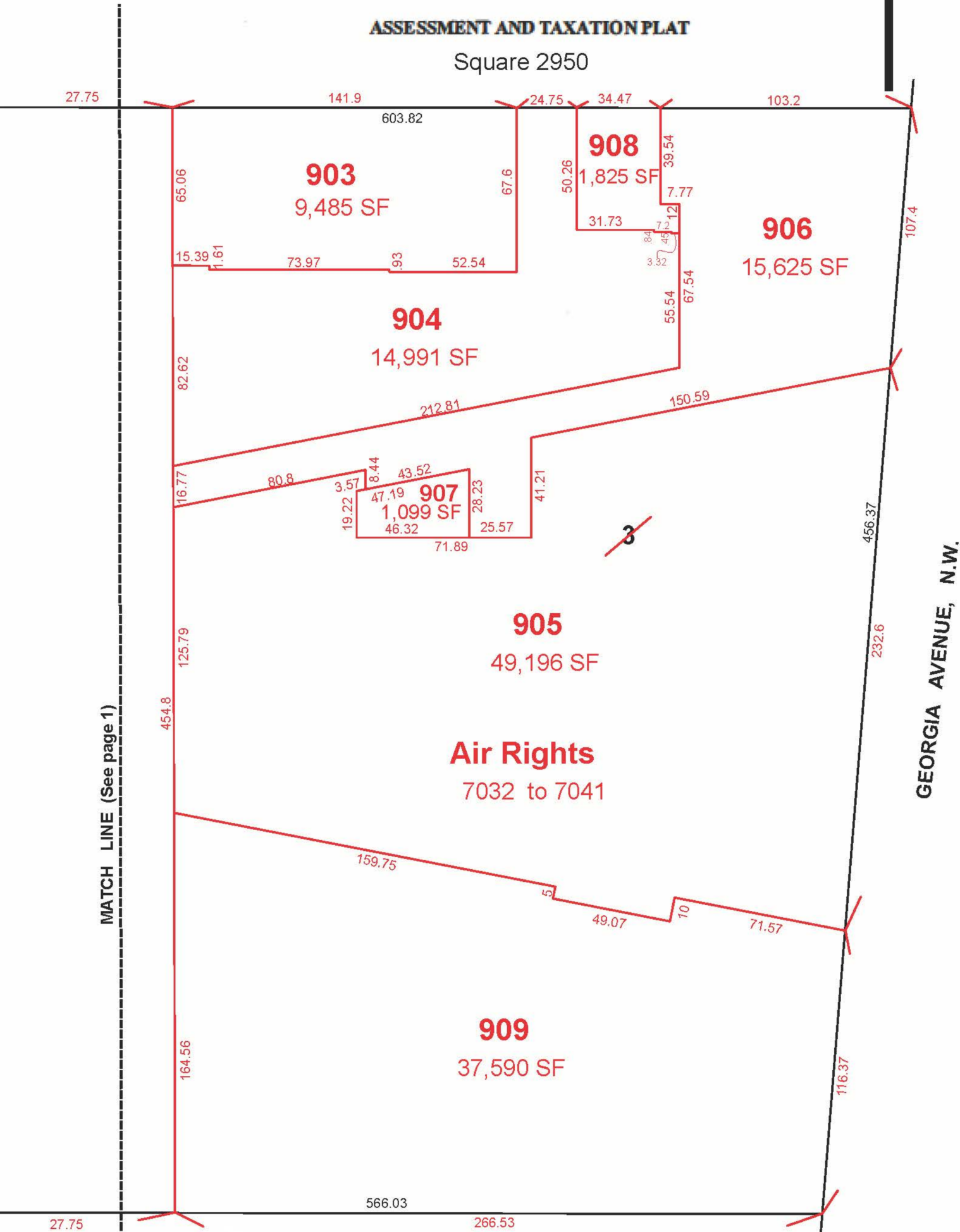
OFFICE OF TAX AND REVENUE  
ASSESSMENT DIVISION

3890-X  
(Page 2 of 2)



ASSESSMENT AND TAXATION PLAT

Square 2950



MATCH LINE (See page 1)

GEORGIA AVENUE, N.W.

David Smith A073384 4/15/21 Scale, 1 inch = 50 ft  
Draftsman Reference Date

The Office of Surveyor of the District of Columbia shall admit this plat to record under the provisions of Chapter 7 of Title 47, District of Columbia Code, Designation of Real Property for Assessment and Taxation, and for other purposes.

Quincy Loney Board of Zoning Adjustment  
for Chief Assessor, Office of Tax and Revenue District of Columbia  
CASE NO. 21437  
EXHIBIT NO. 2