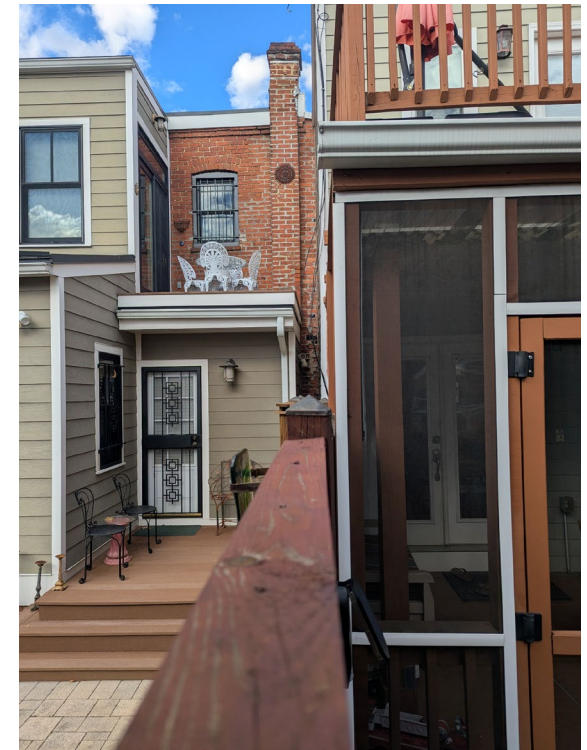




EXISTING REAR FACADE



REAR FAÇADE, TOWARD 1429 D STREET SE



REAR FAÇADE, TOWARD 1425 D STREET SE



EXISTING REAR YARD, VIEW FROM SECOND FLOOR



EXISTING VIEW FROM ALLEY

Board of Zoning Adjustment
District of Columbia
CASE NO. 21418
EXHIBIT NO. 5



VIEW FROM REAR YARD, LOOKING EAST



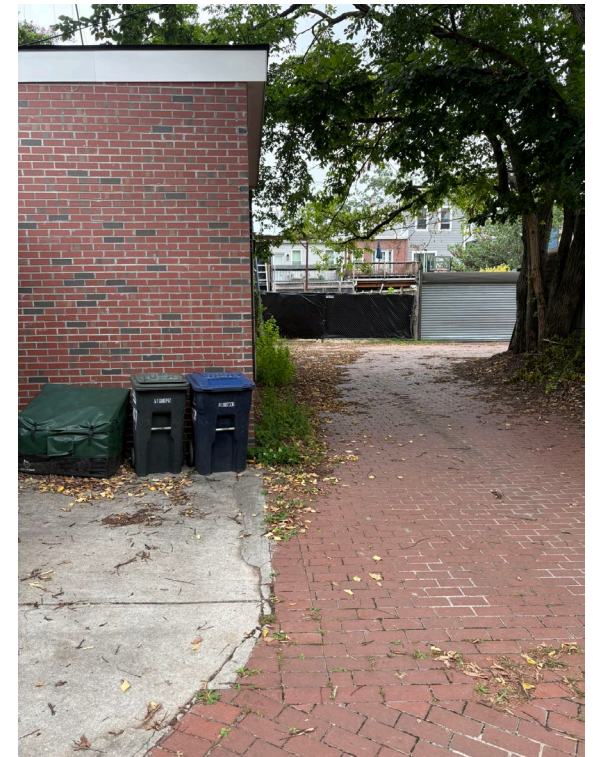
VIEW FROM YARD, LOOKING WEST



ALLEY VIEW, LOOKING WEST



ALLEY VIEW, LOOKING EAST



ALLEY VIEW, LOOKING EAST