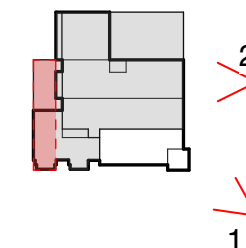




1. View from corner, south east along Wisconsin Ave, Prospect Intersection



2. View from Wisconsin Ave



3. View from West, Prospect Street

McInturff Architects

4220 Leeward Place
Bethesda, MD 20816
mcinturffarchitects.com

p 301.229.3705
f 301.229.6380

EastBanc, Inc

3307 M Street NW, Suite 400
Washington DC 20007
EastBanc.com

1238 WISCONSIN AVE

1238 Wisconsin Ave NW
Washington,, DC 20007

Board of Zoning Adjustment

Application Package
update June 7, 2019

Existing Photos

Board of Zoning Adjustment
District of Columbia
CASE NO.20108
EXHIBIT NO.6