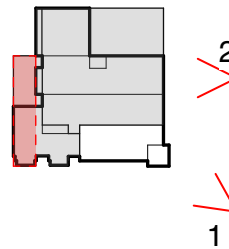




1. View from corner, south east along Wisconsin Ave, Prospect Intersection



2. View from Wisconsin Ave



3. View from West, Prospect Street

McInturff Architects

4220 Leeward Place
Bethesda, MD 20816
mcinturffarchitects.com

p 301.229.3705
f 301.229.6380

EastBanc, Inc

3307 M Street NW, Suite 400
Washington DC 20007
EastBanc.com

1238 WISCONSIN AVE

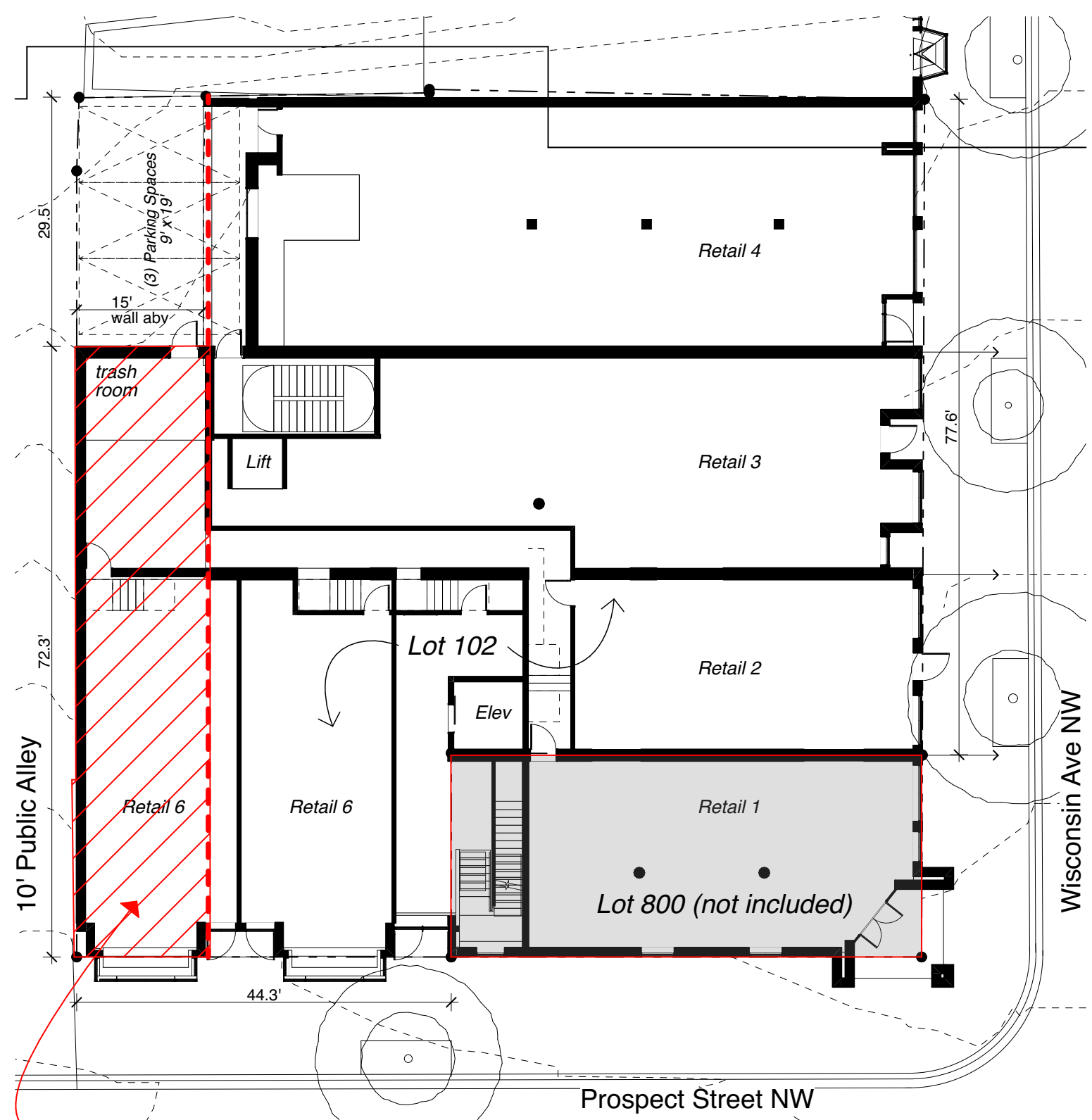
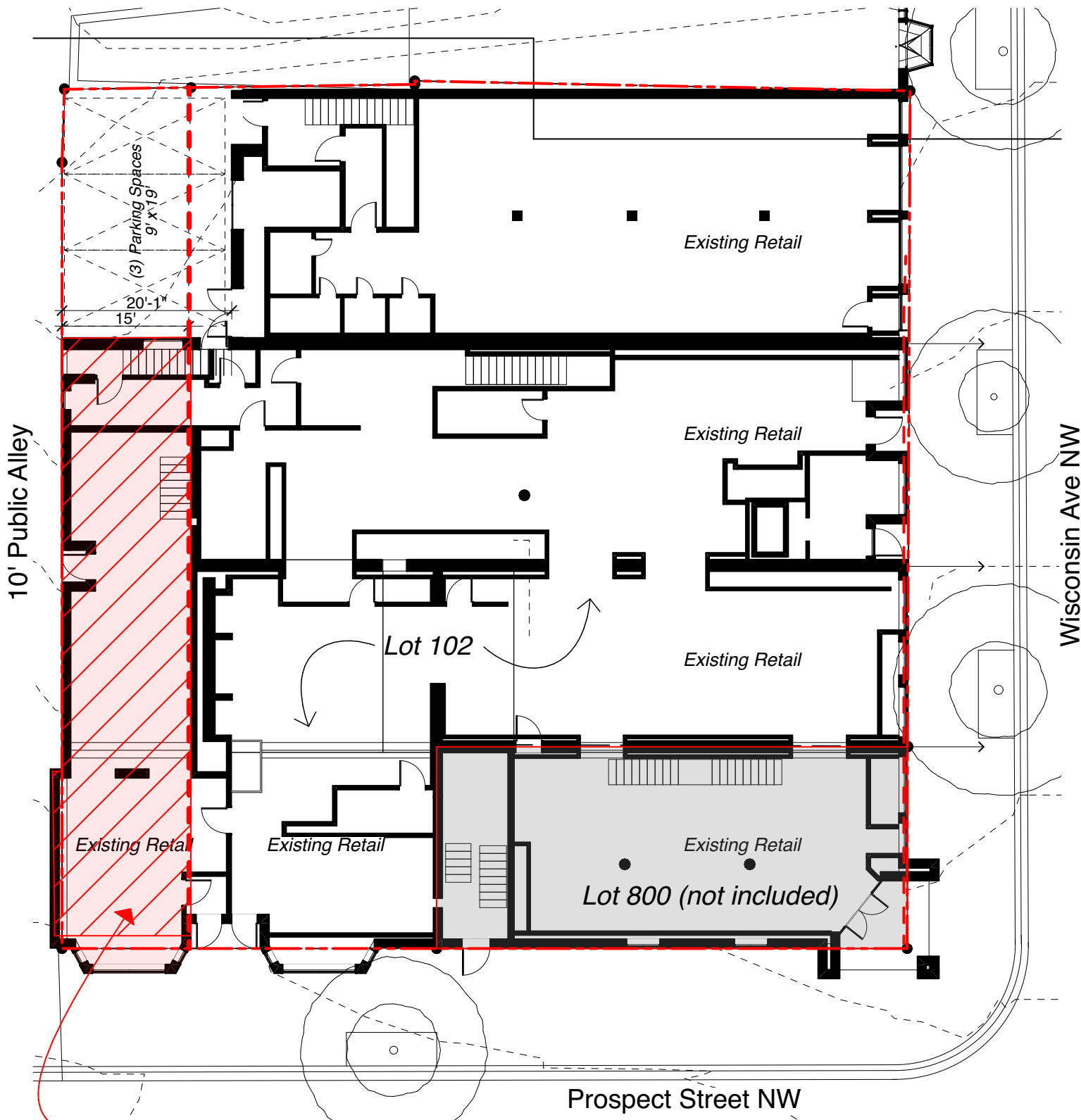
1238 Wisconsin Ave NW
Washington,, DC 20007

Board of Zoning Adjustment

Application Package
update June 7, 2019

Existing Photos

Board of Zoning Adjustment
District of Columbia
CASE NO.20108
EXHIBIT NO.7A3



Existing 1st Floor

SCALE: 1/16" = 1'-0"



Proposed 1st Floor

SCALE: 1/16" = 1'-0"

McInturff Architects

4220 Leeward Place
Bethesda, MD 20816
mcinturffarchitects.com

p 301.229.3705
f 301.229.6380

EastBanc, Inc

3307 M Street NW, Suite 400
Washington DC 20007
EastBanc.com

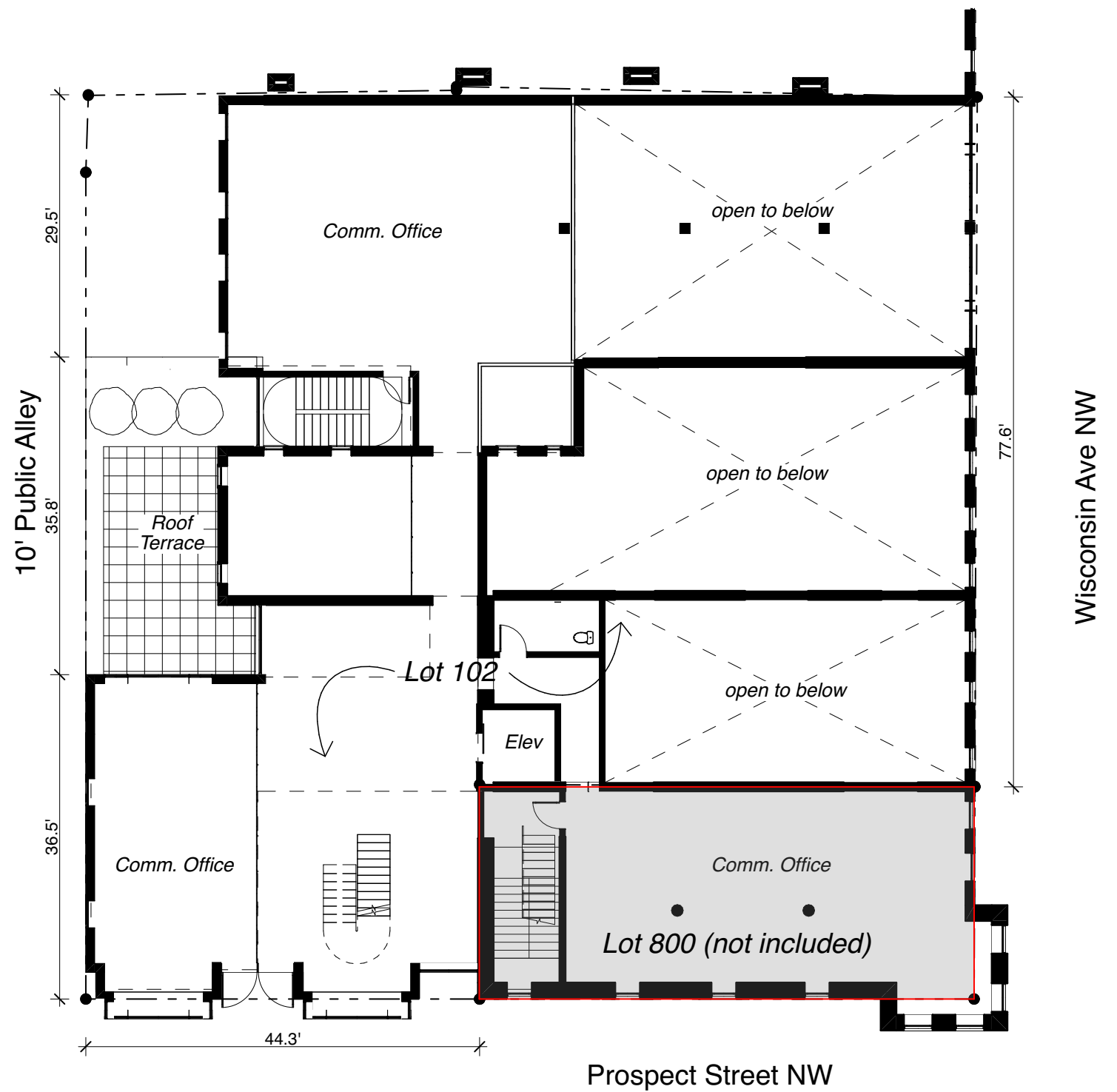
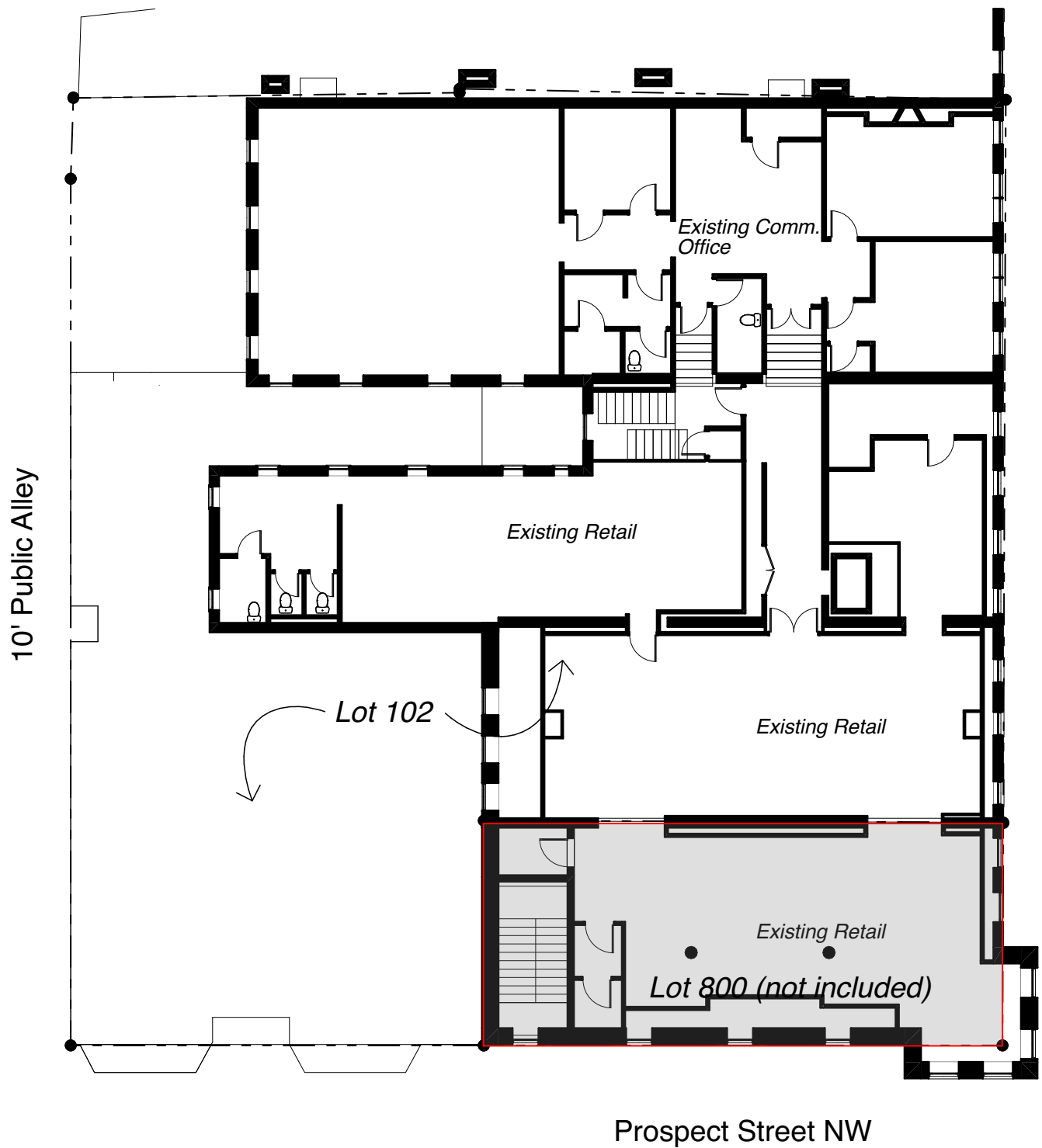
1238 WISCONSIN AVE

1238 Wisconsin Ave NW
Washington,, DC 20007

Board of Zoning Adjustment

Application Package
update June 7, 2019

1st Floor Plans



Existing 2nd Floor

SCALE: 1/16" = 1'-0"

0 5 10 20 50

Proposed 2nd Floor

SCALE: 1/16" = 1'-0"

McInturff Architects

4220 Leeward Place
Bethesda, MD 20816
mcinturffarchitects.com

p 301.229.3705
f 301.229.6380

EastBanc, Inc

3307 M Street NW, Suite 400
Washington DC 20007
EastBanc.com

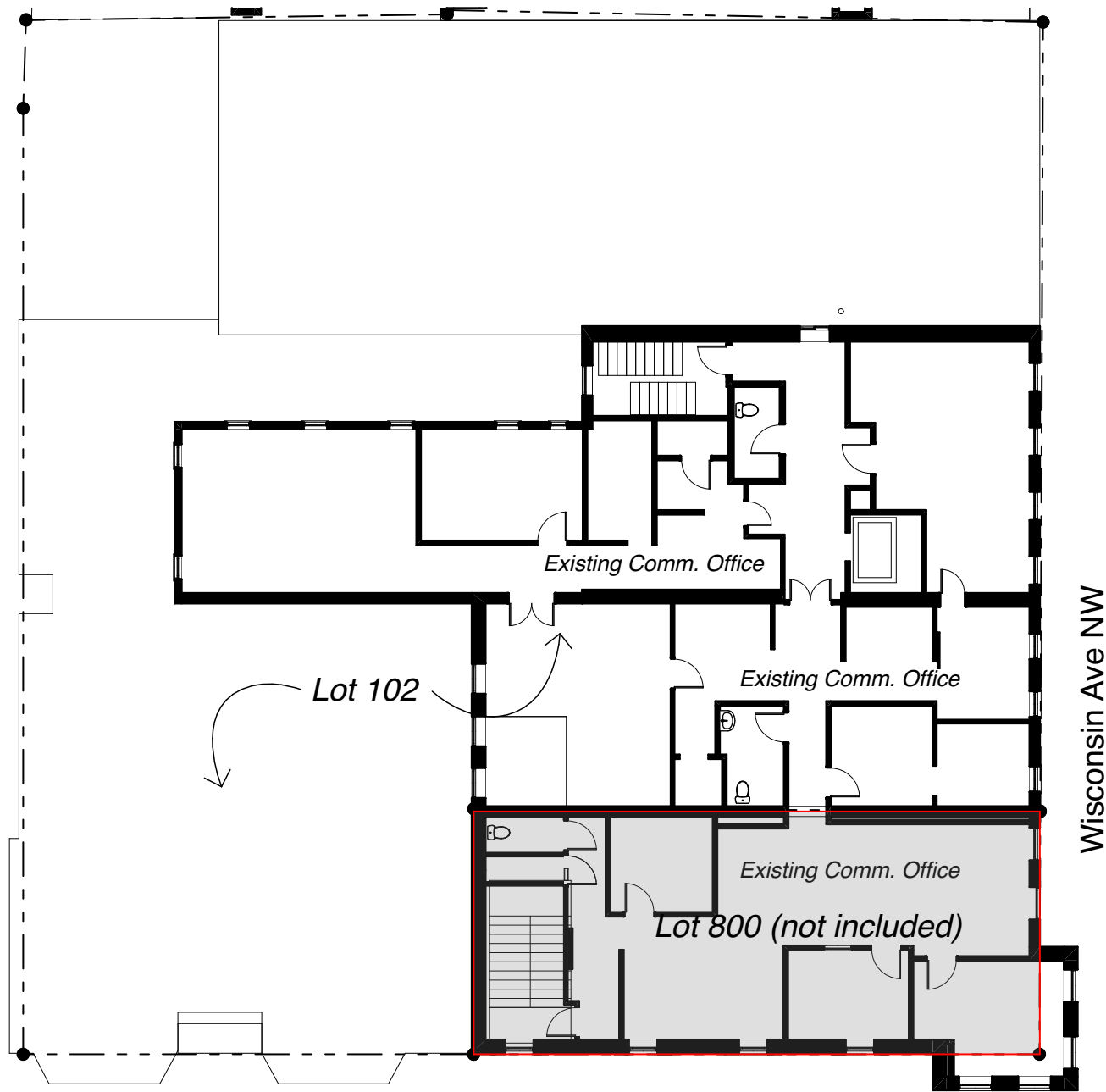
1238 WISCONSIN AVE

1238 Wisconsin Ave NW
Washington, DC 20007

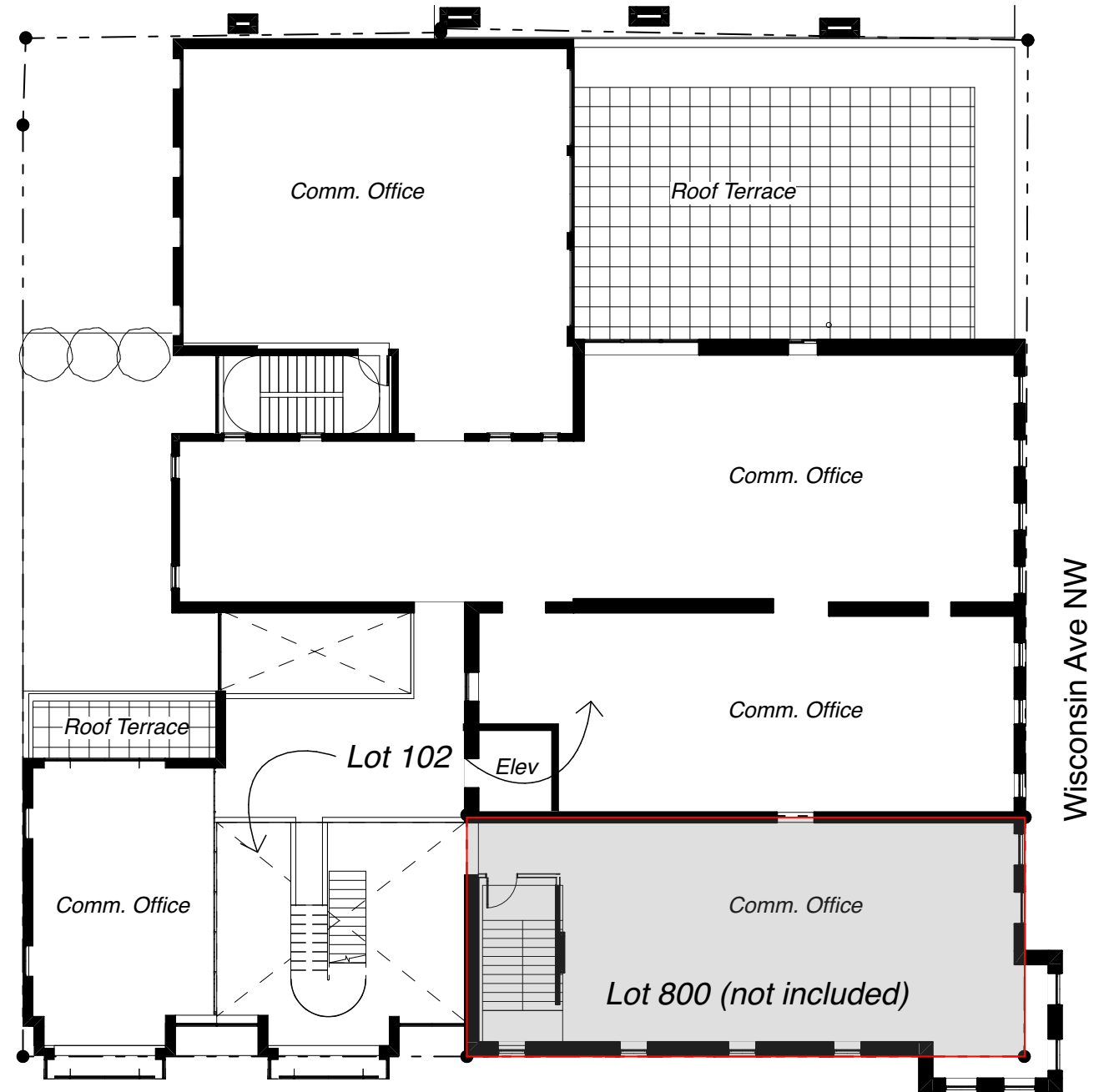
Board of Zoning Adjustment

Application Package
update June 7, 2019

2nd Floor Plans



Prospect Street NW



Prospect Street NW

Existing 3rd Floor

SCALE: 1/16" = 1'-0"



Proposed 3rd Floor

SCALE: 1/16" = 1'-0"

McInturff Architects

4220 Leeward Place
Bethesda, MD 20816
mcinturffarchitects.com

p 301.229.3705
f 301.229.6380

EastBanc, Inc

3307 M Street NW, Suite 400
Washington DC 20007
EastBanc.com

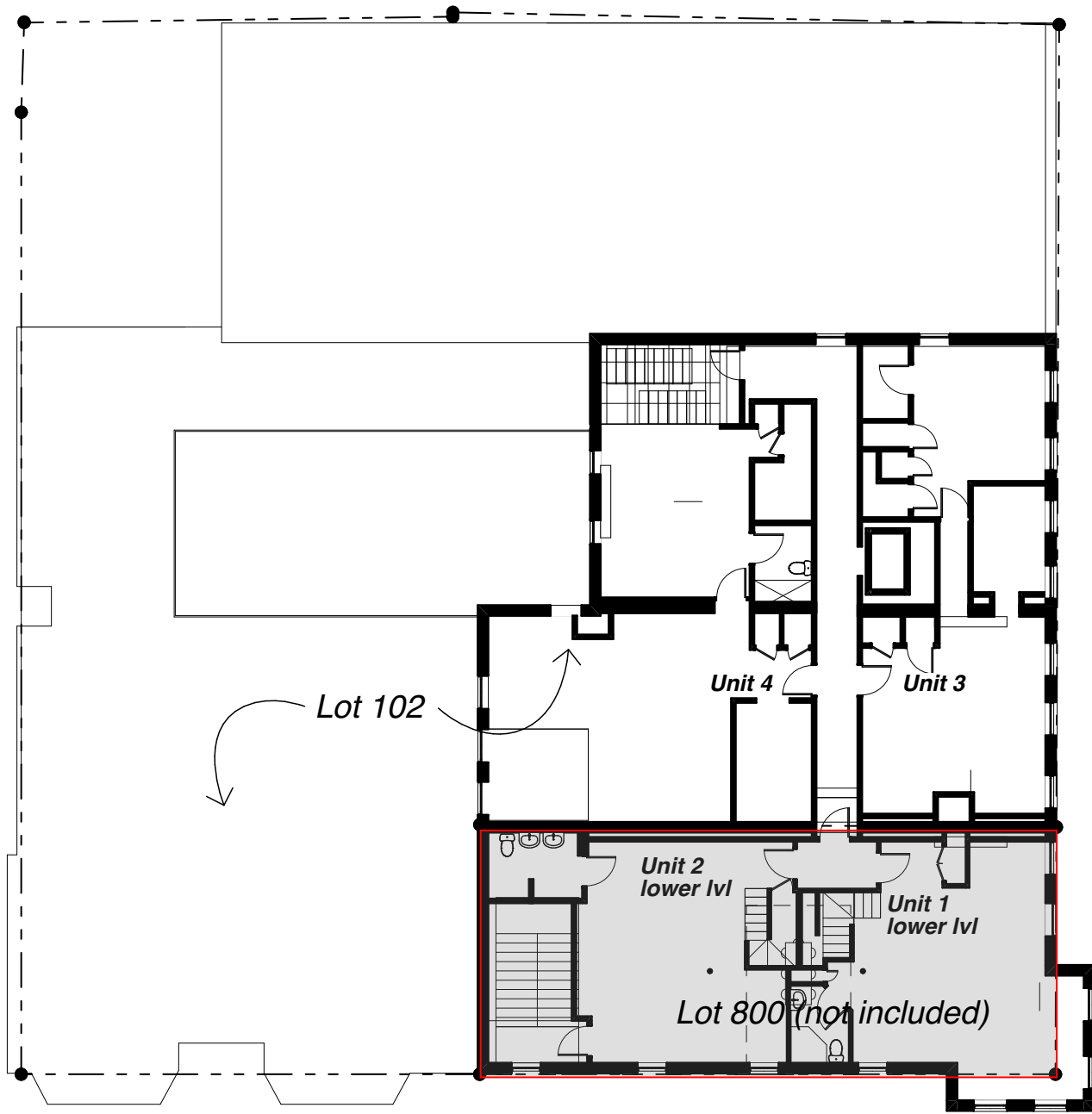
1238 WISCONSIN AVE

1238 Wisconsin Ave NW
Washington, DC 20007

Board of Zoning Adjustment

Application Package
update June 7, 2019

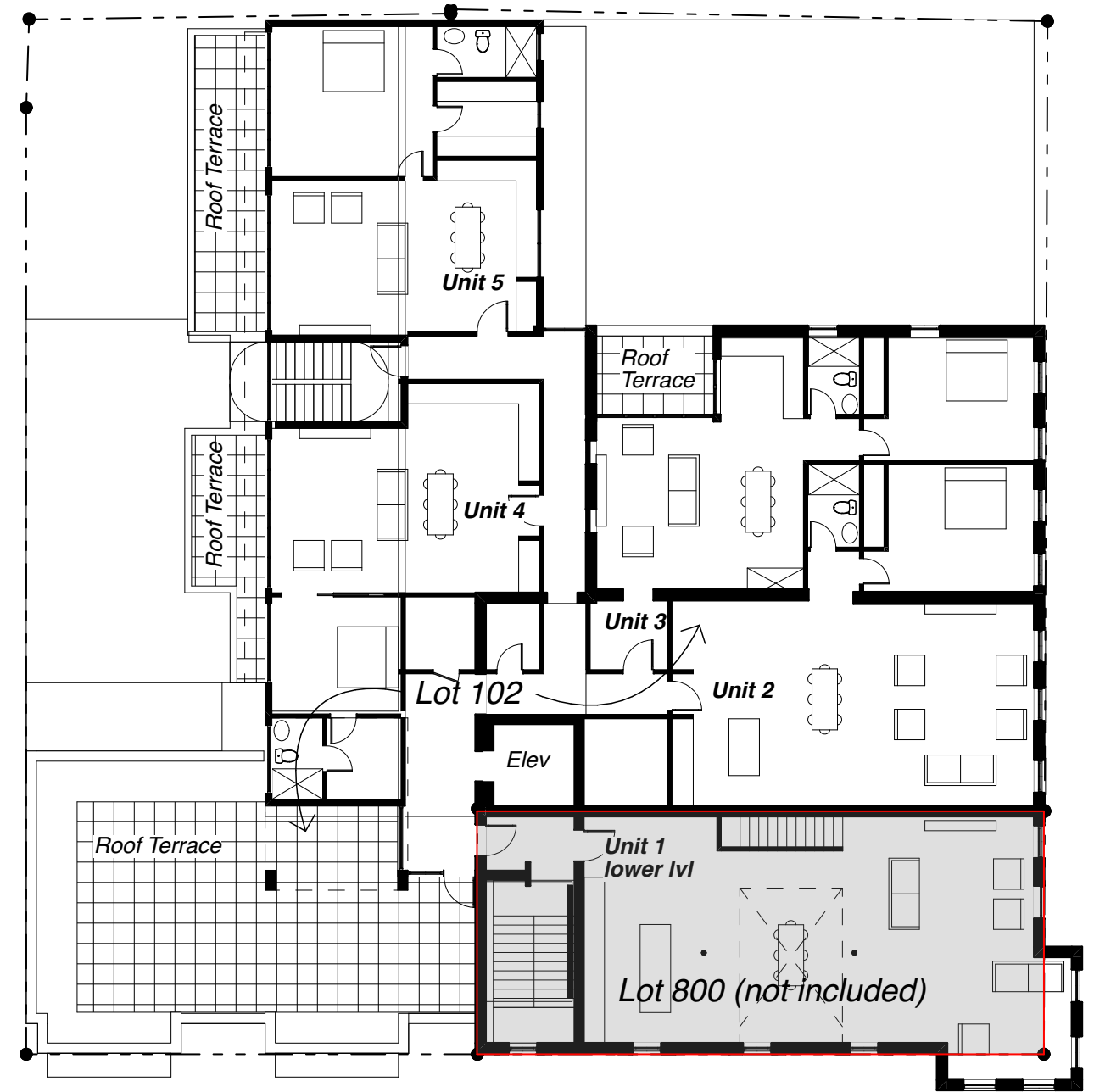
3rd Floor Plans



Prospect Street NW

Wisconsin Ave NW

Existing 4th Floor



Prospect Street NW

Wisconsin Ave NW

Proposed 4th Floor

0 5 10 20 50

McInturff Architects

4220 Leeward Place
Bethesda, MD 20816
mcinturffarchitects.com

p 301.229.3705
f 301.229.6380

EastBanc, Inc

3307 M Street NW, Suite 400
Washington DC 20007
EastBanc.com

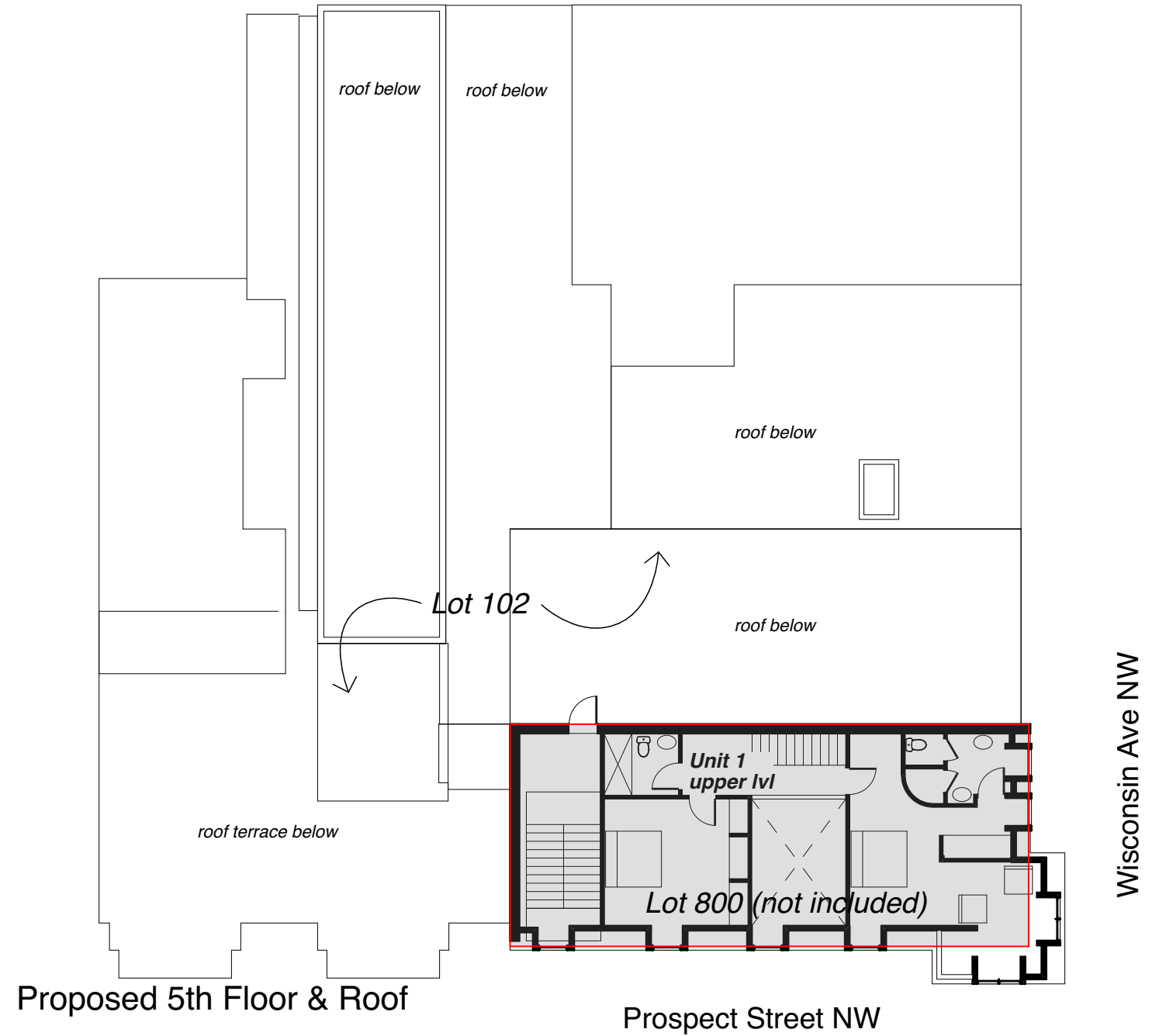
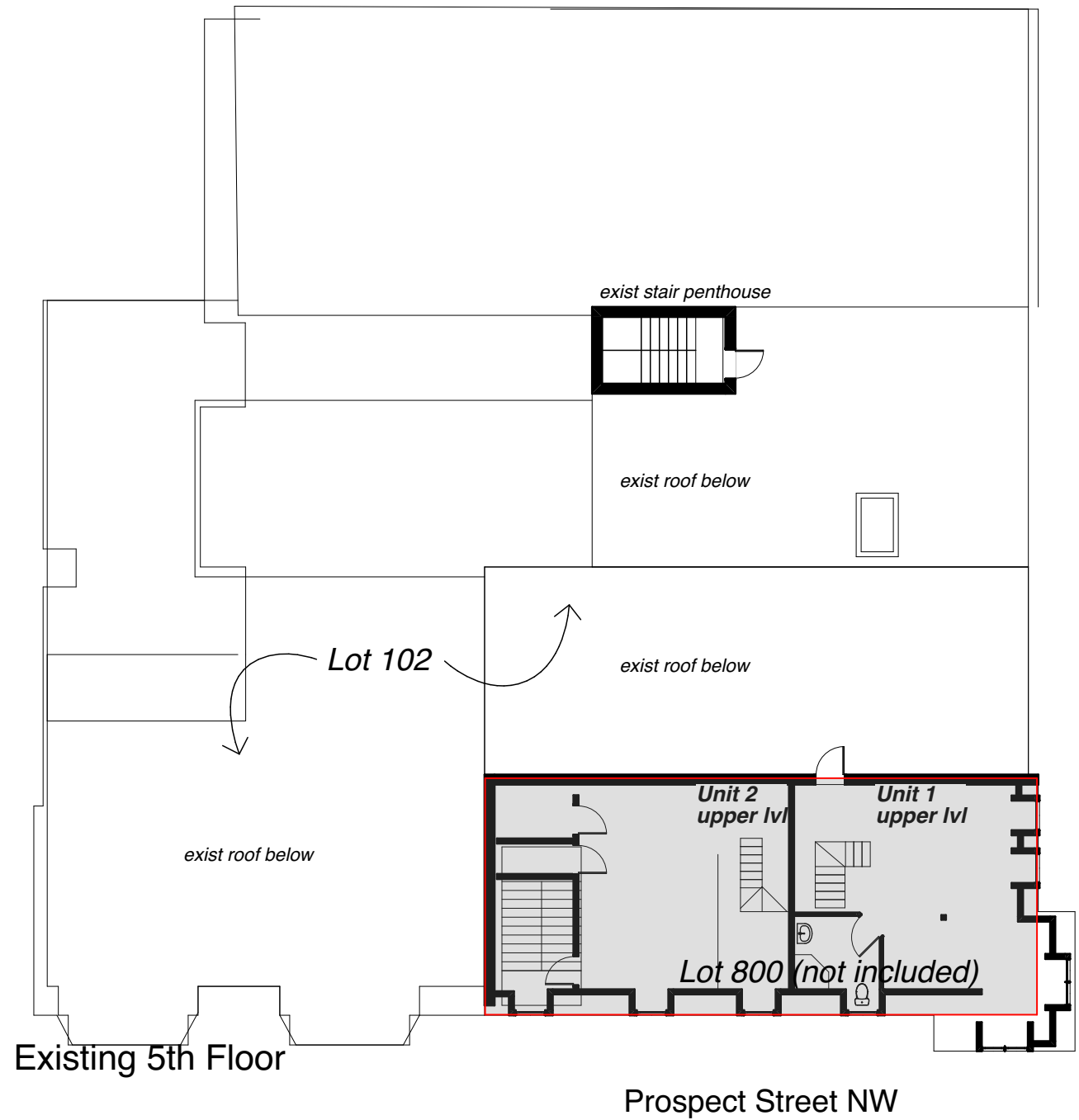
1238 WISCONSIN AVE

1238 Wisconsin Ave NW
Washington, DC 20007

Board of Zoning Adjustment

Application Package
update June 7, 2019

4th Floor Plans



McInturff Architects

4220 Leeward Place
Bethesda, MD 20816
mcinturffarchitects.com

p 301.229.3705
f 301.229.6380

EastBanc, Inc

3307 M Street NW, Suite 400
Washington DC 20007
EastBanc.com

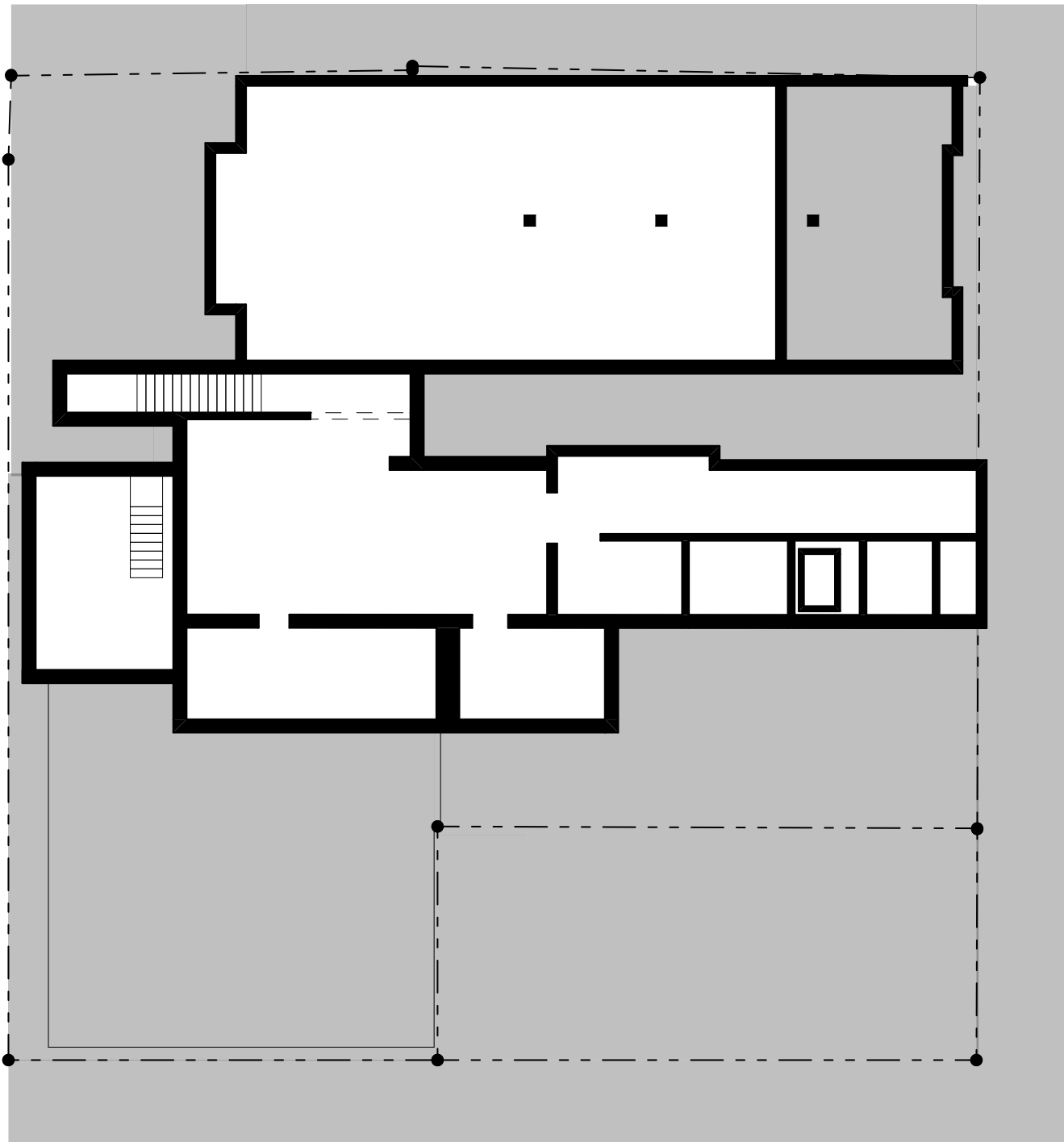
1238 WISCONSIN AVE

1238 Wisconsin Ave NW
Washington,, DC 20007

Board of Zoning Adjustment

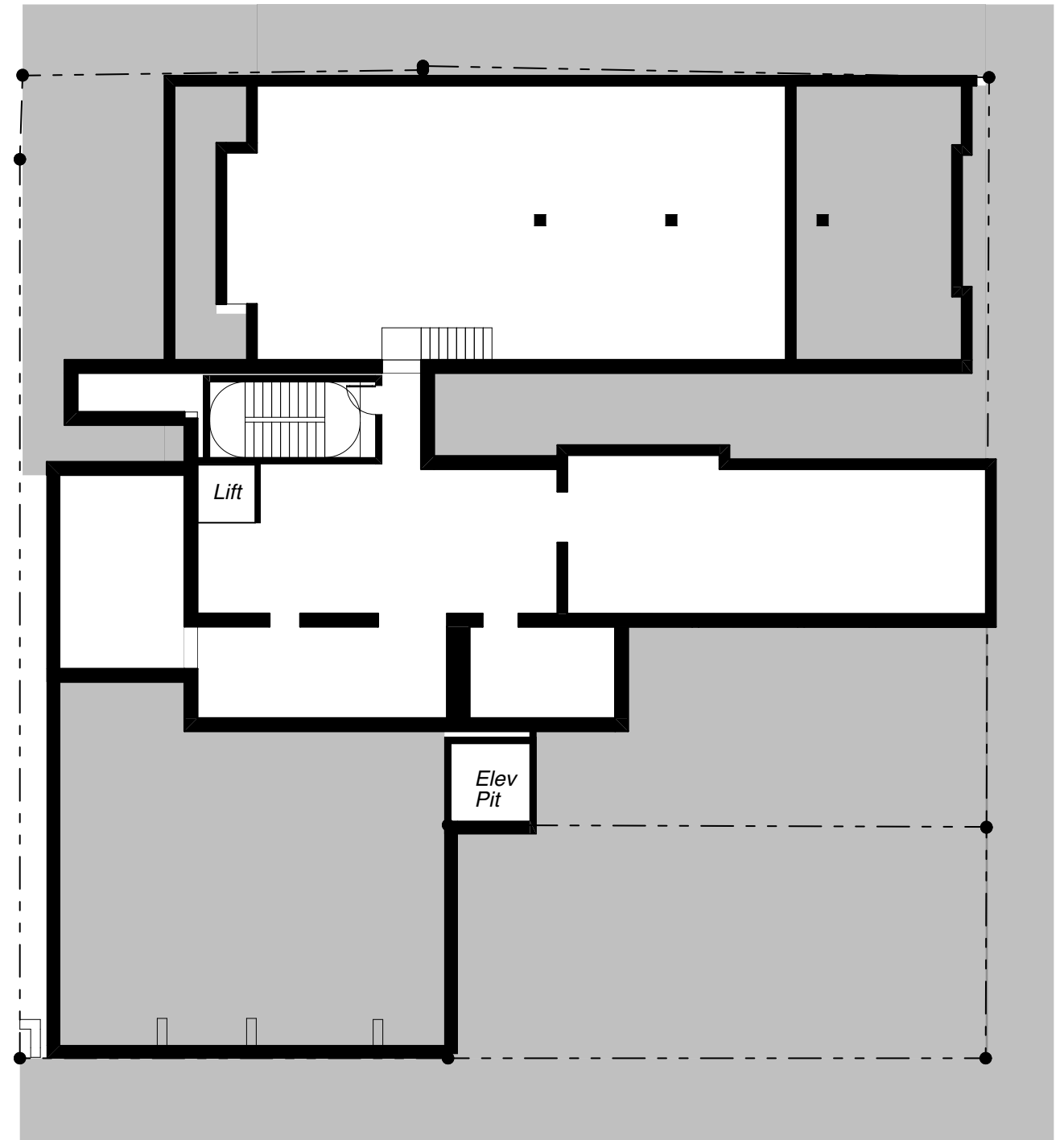
Application Package
update June 7, 2019

5th Floor Plans



Existing Cellar

SCALE: 1/16" = 1'-0"



Proposed Cellar

SCALE: 1/16" = 1'-0"

McInturff Architects

4220 Leeward Place
Bethesda, MD 20816
mcinturffarchitects.com

p 301.229.3705
f 301.229.6380

EastBanc, Inc

3307 M Street NW, Suite 400
Washington DC 20007
EastBanc.com

1238 WISCONSIN AVE

1238 Wisconsin Ave NW
Washington,, DC 20007

Board of Zoning Adjustment

Application Package
update June 7, 2019

Cellar Plans