

ELEVATIONS KEY NOTE

RD	MECHANICAL ROLL UP DOOR
ST1	CULTURED STONE VENEER
STC	WHITE STUCCO
GR	42" H GAUDDRAIL ABOVE A.F.F.L
GT	42" HIGH METAL GATE
F	6' HIGH WOOD FENCE PER C-714
GRL	TOP GLASS RAIL OVER PARAPET. GLASS RAIL : 24" HIGH. TOP OF GLASS 42" A.F.F.L

TYP. WATERPROOFING NOTES

- SELF ADHERING COMPOSITE SHEET MEMBRANE WATERPROOFING (TYPICAL UNDER SLAB LOCATION BELOW GRADE). MANUFACTURE : PREPRUFE 300R OR APPROVED EQUAL.
- SELF ADHERING COMPOSITE SHEET MEMBRANE WATERPROOFING (TYPICAL BELOW GRADE FOUNDATION WALLS). MANUFACTURE : PREPRUFE 160R OR APPROVED EQUAL.
- HOT FLUID APPLIED RUBBERIZED ASPHALT WATER PROOFING MEMBRANE. TYPICAL FOR ROOF OVER OCCUPIED SPACE & ROOF TERRACES LOCATIONS. MANUFACTURE : HENRY 790-11 OR APPROVED EQUAL.
- CRYSTALLINE WATERPROOFING AT CAST IN PLACE VAULT INTERIORS & ELEVATOR PITTS TYPICAL. MANUFACTURE : XYPEX OR APPROVED EQUAL.
- PEDESTRIAN COATING AT ALL DECKS (TOP AND EDGES); BOTTOM OF EXPOSED STRUCTURE TO BE PTD WITH EXTERIOR LATEX MASONRY PAINT, COLOR (TBS); TRAFFIC COATING TO BE USED IN ALL LOADING AREAS; PARKING ENTRANCES TO RECEIVE CONCRETE SEALER SIMILAR TO CURECRETE ASHFORD FOMULA PENETRATING SEALER AT DRIVE AISLE & PARKING SPACES.

FIRE RATED ROOF NOTE

NEW ROOF TO BE CONSTRUCTED OF 5/8" TYPE X GYPSUM BOARD SUPPORTED DIRECTLY BENEATH THE UNDERSIDE OF THE ROOF SHEATHING OR DECK, USING MINIMUM 2" LEDGERS ATTACHED TO THE SIDES OF THE ROOF FRAMING MEMBERS FOR A MINIMUM DISTANCE OF 4 FEET FROM THE EXTERIOR WALL

Table 5.5 Building Envelope Requirements for Climate Zone 4 (A,B,C)*
Residential

Opaque Elements	Assembly Maximum	Insulation Min. R-Value	
Roofs Attic and Other	U-0.0189	R-54	
Walls, above Grade Mass Wood Framed and Other	U-0.081 U-0.058	R-12.5 c.i. R-15 + R-4.1 c.i.	
Wall, below Grade Below Grade Wall	C-0.092	R-11 c.i.	
Floors Wood Framed and Other	U-0.030	R-33	
Slab-on-Grade Floors Unheated	F-0.520	R-20 for 24 in.	
Opaque Doors Swinging Nonswinging	U-0.45 U-0.45		
Fenestration	Assembly Max. U	Assembly Max.SHGC	Assembly Min.VT/SHGC
Vertical Fenestration, 0%–40% of Wall	(for all frame types)		
Nonmetal framing, all Metal framing, entrance door	U-0.33 U-0.61	SHGC-0.36	1.10
Skylight, 0%–3% of Roof All types	U-0.45	SHGC-0.36	NR

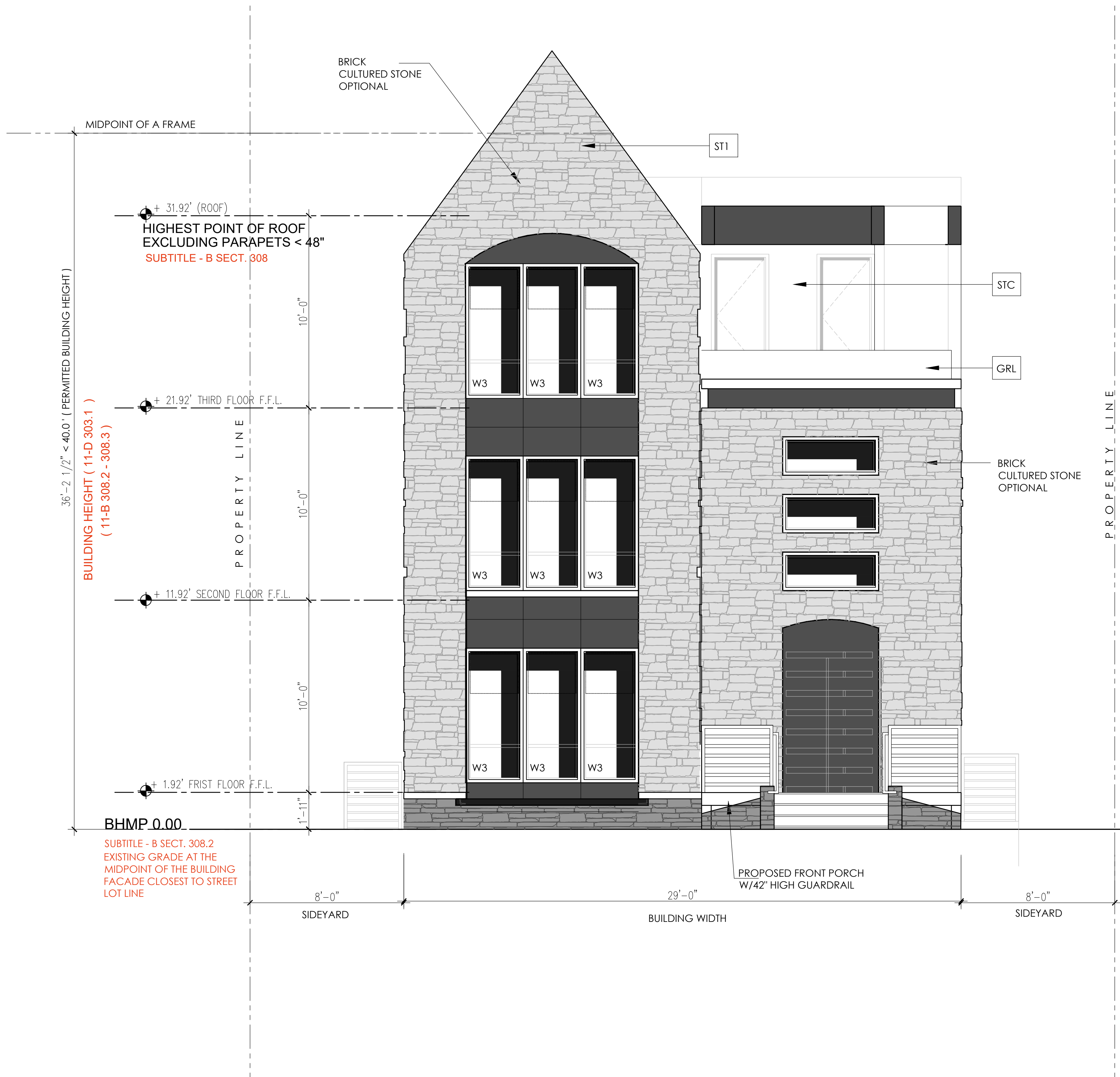
WINDOW SCHEDULE

WINDOW TYPE	ROUGH OPNG SIZE	TYPE	FRAME MAT'L	GLASS (Low - E, Clear)						REMARKS
				Thickness	Visible Transmittance	Air leakage (U.S./l-P)	Condensation Resistance	SHGC	U-Factor (U.S./l-P)	
W2T	2'0" X 2'0"	TRANSUM	Aluminum	7/8" IGU	0.51	0.2	51	0.40	0.30	TILT UP (10% BETTER PERFORMANCE)
W3	3'0" X 6'0"	CASEMENT	Aluminum	7/8" IGU	0.51	0.2	51	0.40	0.30	SWING OPEN (10% BETTER PERFORMANCE)
W3T	3'0" X 2'0"	TRANSUM	Aluminum	7/8" IGU	0.51	0.2	51	0.40	0.30	TILT UP (10% BETTER PERFORMANCE)
W3E	3'0" X 3'0"	CASEMENT	Aluminum	7/8" IGU	0.51	0.2	51	0.40	0.30	SWING OPEN (10% BETTER PERFORMANCE)
W3C	3'0" X 6'0"	TRANSUM	Aluminum	7/8" IGU	0.51	0.2	51	0.40	0.30	TILT UP (10% BETTER PERFORMANCE)
W3F	3'0" X 6'0"	FIXED	Aluminum	7/8" IGU	0.51	0.2	51	0.40	0.30	FIXED (10% BETTER PERFORMANCE)
W5T	5'0" X 2'0"	TRANSUM	Aluminum	7/8" IGU	0.51	0.2	51	0.40	0.30	TILT UP (10% BETTER PERFORMANCE)
DW3	3'0" X 8'4"	SWING DOOR	Aluminum	7/8" IGU	0.51	0.2	51	0.36	0.61	1" IGU in Swing Door STOREFRONT

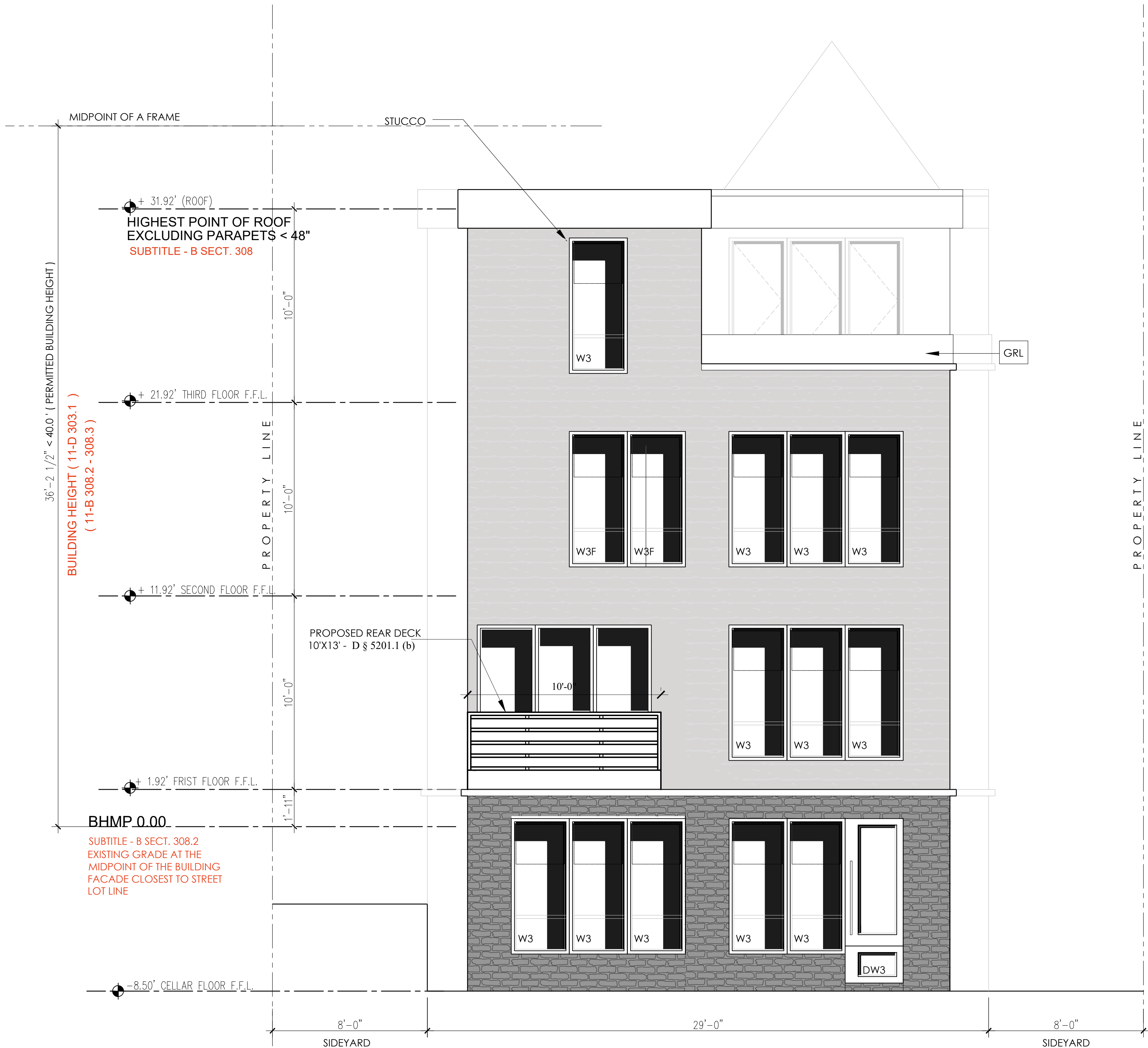
ALL DOORS AND WINDOWS TO HAVE A U VALUE OF 0.35 OR LESS PER D C MR 12A 2008 TABLE EC-402.1.1
ALL WINDOWS AND DOORS ALONG PROPERTY LINE FACING PUBLIC ALLEY OR NO BUILD ZONE ARE PROTECTED OPENINGS
ALL WINDOWS WITHIN 36" FROM PROPERTY LINE ARE TEMP. 45 MIN RATED WINDOWS

WINDOWS IN R-2 UNITS MUST HAVE GUARDS WHERE THE OPENING OF THE SILL PORTION OF AN OPERABLE WINDOW IS LOCATED MORE THAN 72 INCHES ABOVE FINISHED GRADE OR OTHER SURFACE BELOW AND THE LOWEST PART OF THE CLEAR OPENING OF THE WINDOW IS AT A HEIGHT LESS THAN 36 INCHES ABOVE THE FINISHED FLOOR OF THE ROOM. OPERABLE SECTIONS OF WINDOWS MUST NOT PERMIT OPENINGS THAT ALLOW PASSAGE OF A 4-INCH DIAMETER SPHERE WHERE SUCH OPENINGS ARE LOCATED WITHIN 36 INCHES OF THE FLOOR. [2017 DCBC 1015.8]

ST1:



1 FRONT ELEVATION
SCALE: 1/4" = 1'-0"



2 REAR ELEVATION
SCALE: 1/4" = 1'-0"

6008 34TH PL. NW

I AM RESPONSIBLE FOR DETERMINING THAT THE ENGINEERING DESIGNS INCLUDED IN THIS APPLICATION ARE IN COMPLIANCE WITH ALL LAWS AND REGULATIONS OF THE DISTRICT OF COLUMBIA. I HAVE SUPERVISED THE DEVELOPMENT OF THE ENGINEERING DESIGNS INCLUDED IN THIS APPLICATION.

ELEVATIONS

A005

RAMDESIGN
COPYRIGHT 2021