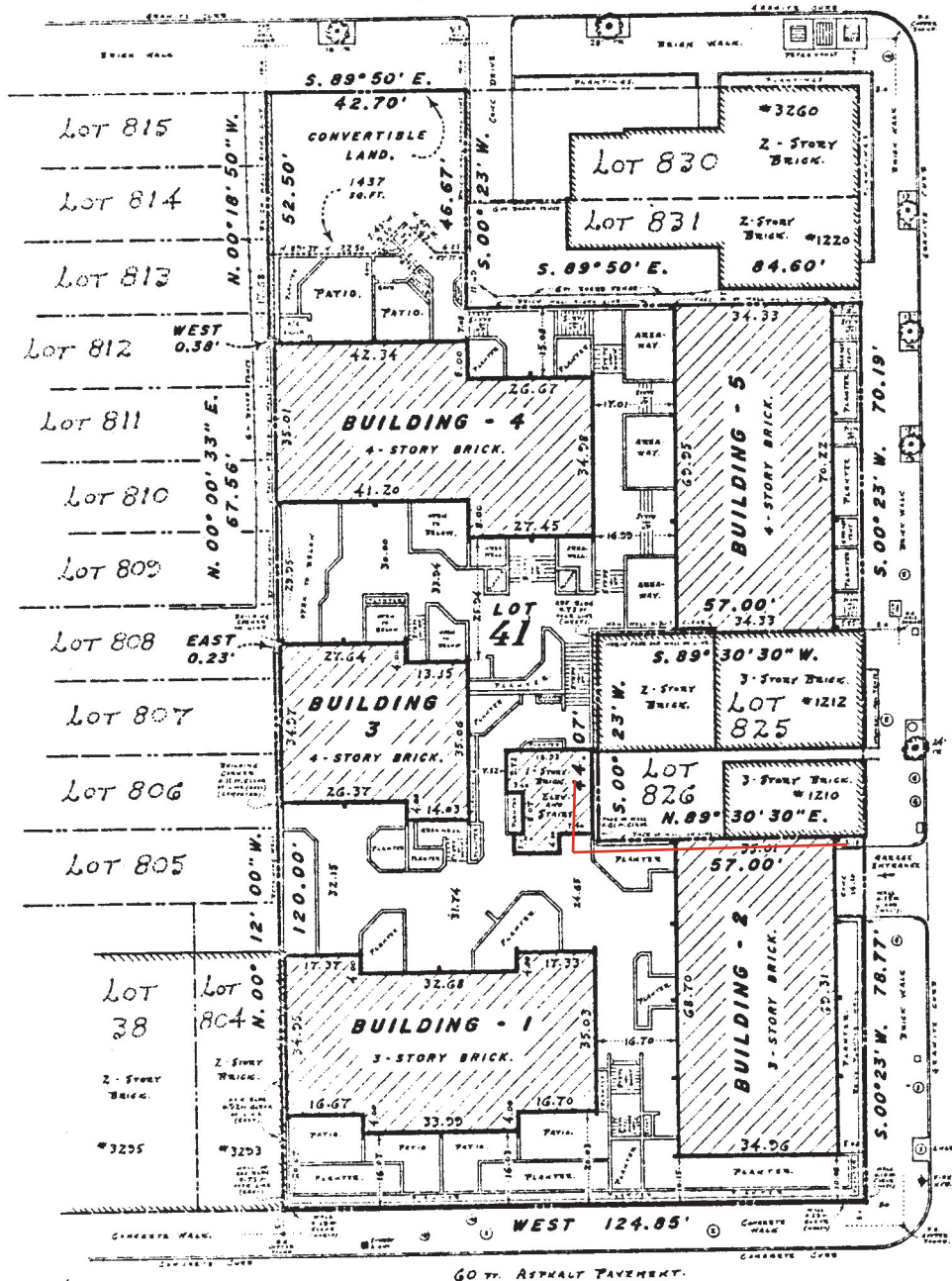


PLAT OF CONDOMINIUM SUBDIVISION LOT 41 - SQUARE 1206

ETON, A CONDOMINIUM

23 W. ASPHALT PAVEMENT.
PROSPECT STREET, N.W.
(60 FT. R/W)

SCALE: 1" = 20'



POTOMAC STREET, N.W.
(60 FT. R/W)

30.5 FT. ASPHALT PAVEMENT.

NOTES:

1. TOTAL AREA OF LOT 41:
23,755.14 SQ. FT. OR 0.54534 AC.
2. PROPERTY SHOWN ABOVE THE REQUIREMENTS OF THE
U.C. SURVEYING OFFICE AS FOLLOWS:
SUBDIVISION BOOK 171 - PAGE 149.
SURVEY BOOK 200 - PAGE 100.
3. ALL BUILDING DIMENSIONS SHOWN HEREON WERE
MEASURED TO THE MAIN BRICK FACE OF WALLS.

"H" **STREET, N.W.**
(80 FT. R/W)

SURVEY AND PLAT BY:
A. Moots & Thomas, Inc.
REGISTERED PROFESSIONAL ENGINEERS AND LAND SURVEYORS
12750 THIRTEENTH STREET, N.W., WASHINGTON, D.C. 20004
TELEPHONE: (301) 881-2845

SCALE: 1 IN. = 20 FT. SEE NO. 21394
H-81-9236
EXHIBIT NO. 4