

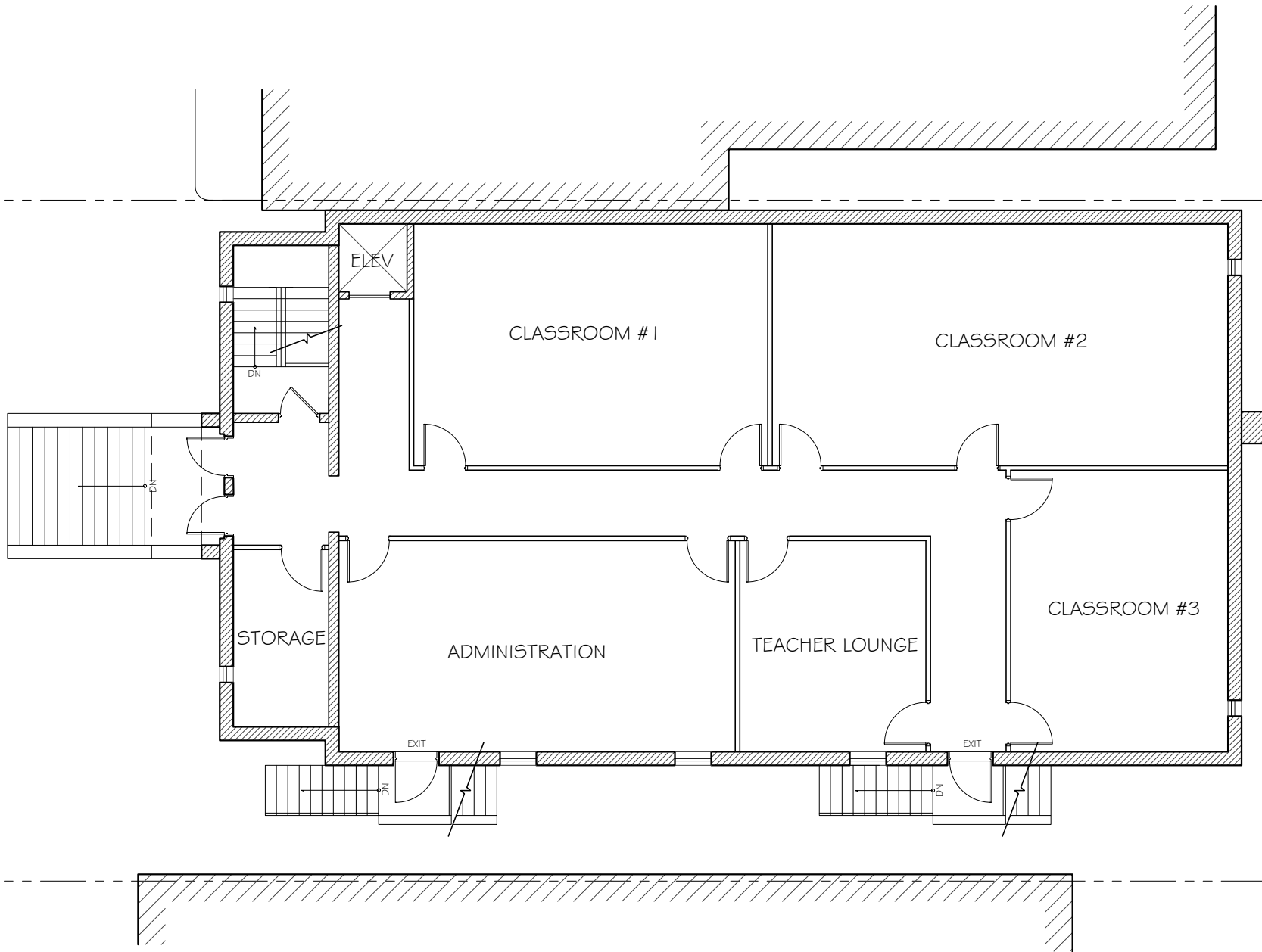
3423 HOLMEAD PLACE NW. WASHINGTON DC 20010

LOWER LEVEL PLAN

JON HENSLEY ARCHITECTS, PLLC - COPYRIGHT (C) 2019



Board of Zoning Adjustment
 District of Columbia
 CASE NO. 20083, 2019
 EXHIBIT 803
 SCALE: 1/8" = 1'-0"



3423 HOLMEAD PLACE NW. WASHINGTON DC 20010

UPPER LEVEL PLAN

JON HENSLEY ARCHITECTS, PLLC - COPYRIGHT (C) 2019

MAY 17, 2019
SCALE: 3/32" = 1'-0"