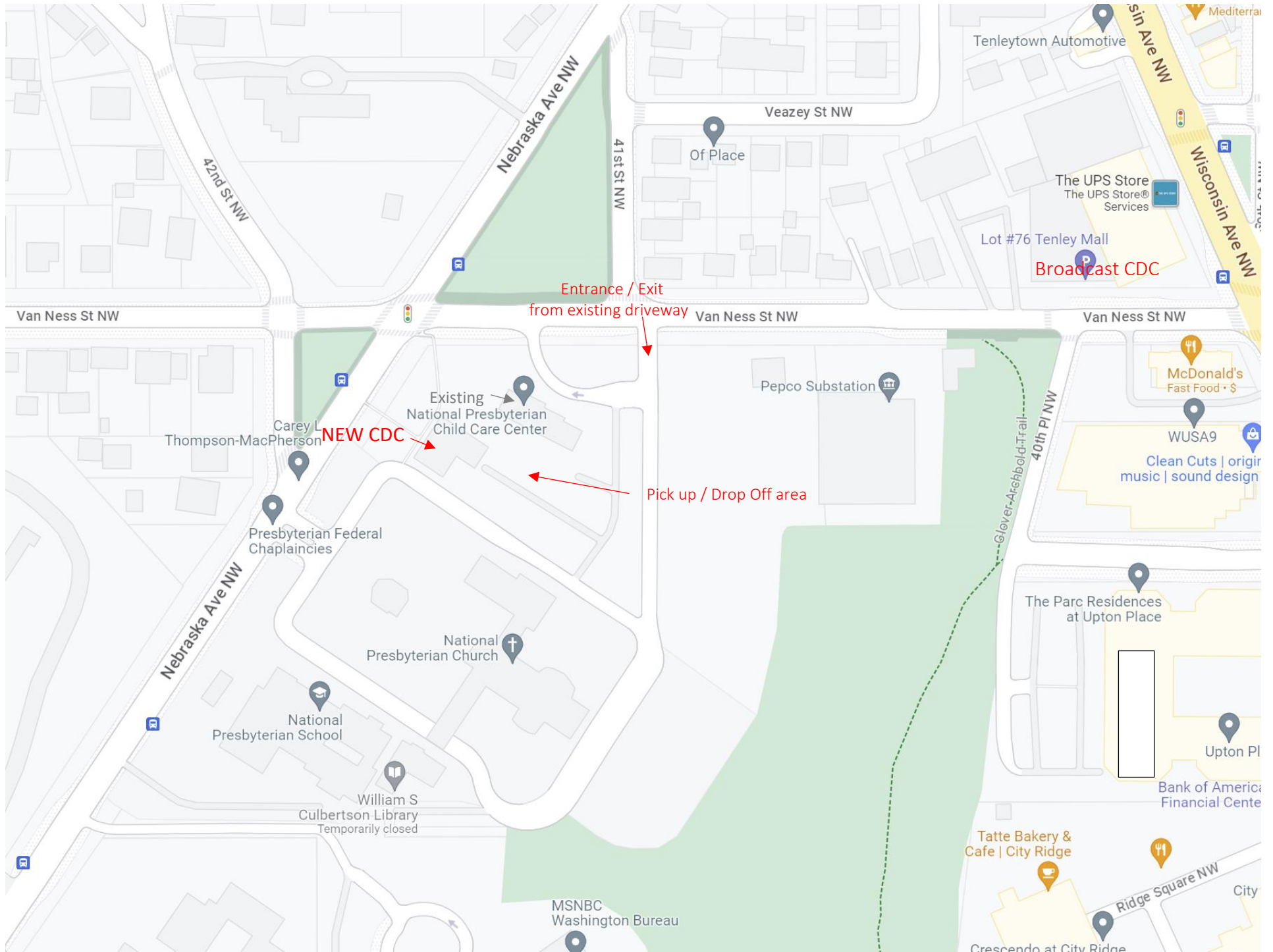
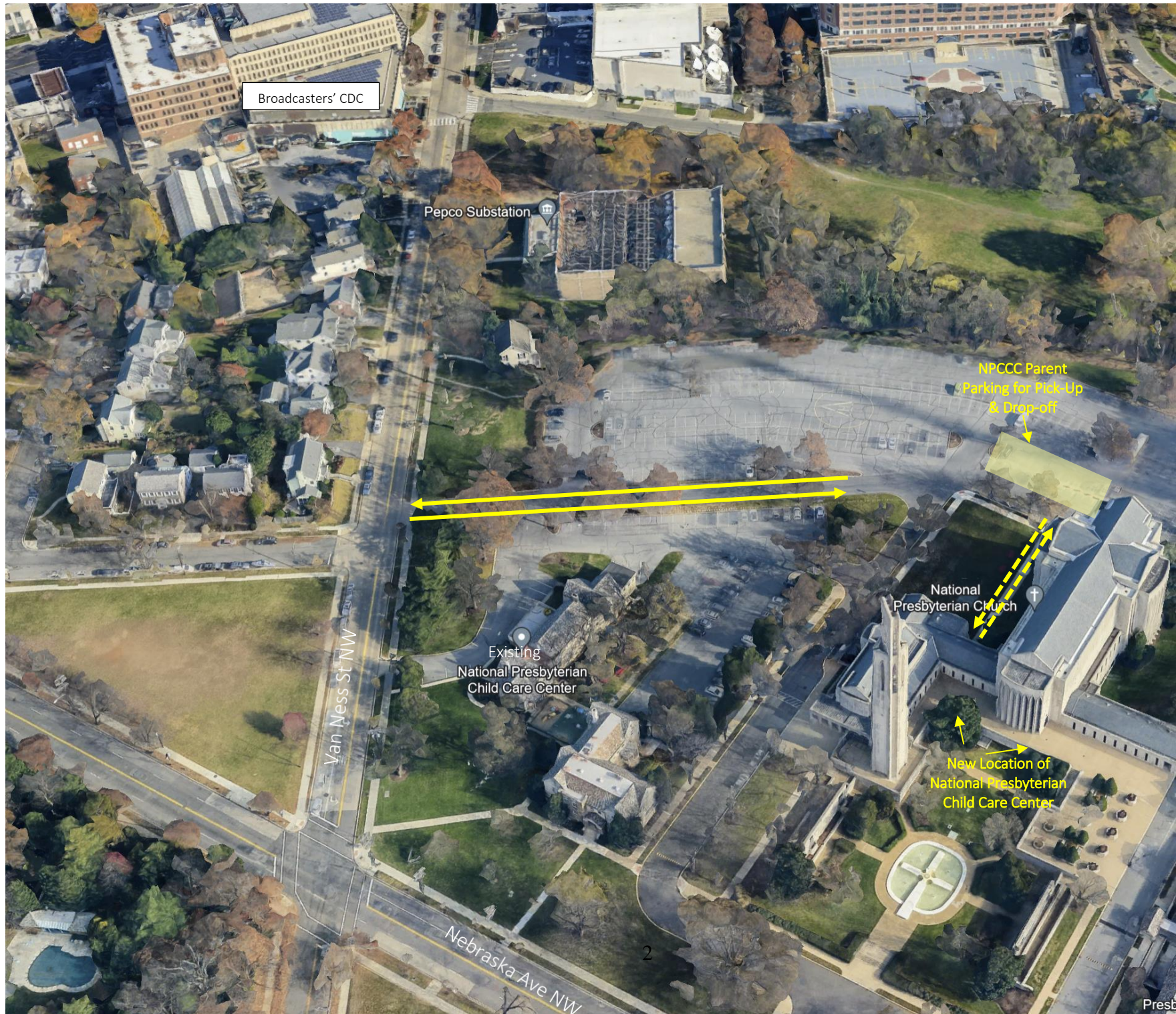




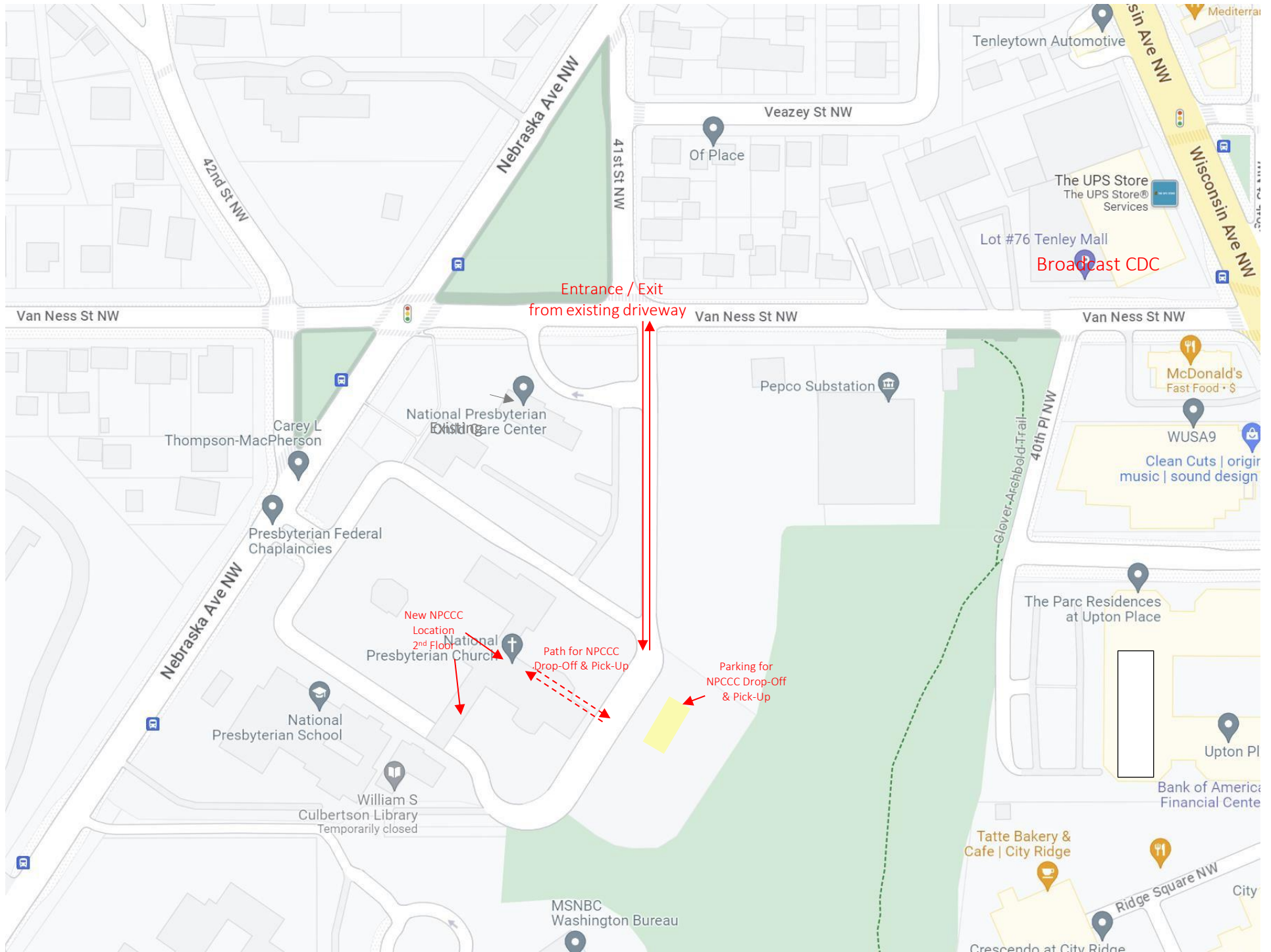
Board of Zoning Adjustment
District of Columbia
CASE NO 20992A
EXHIBIT NO 20B

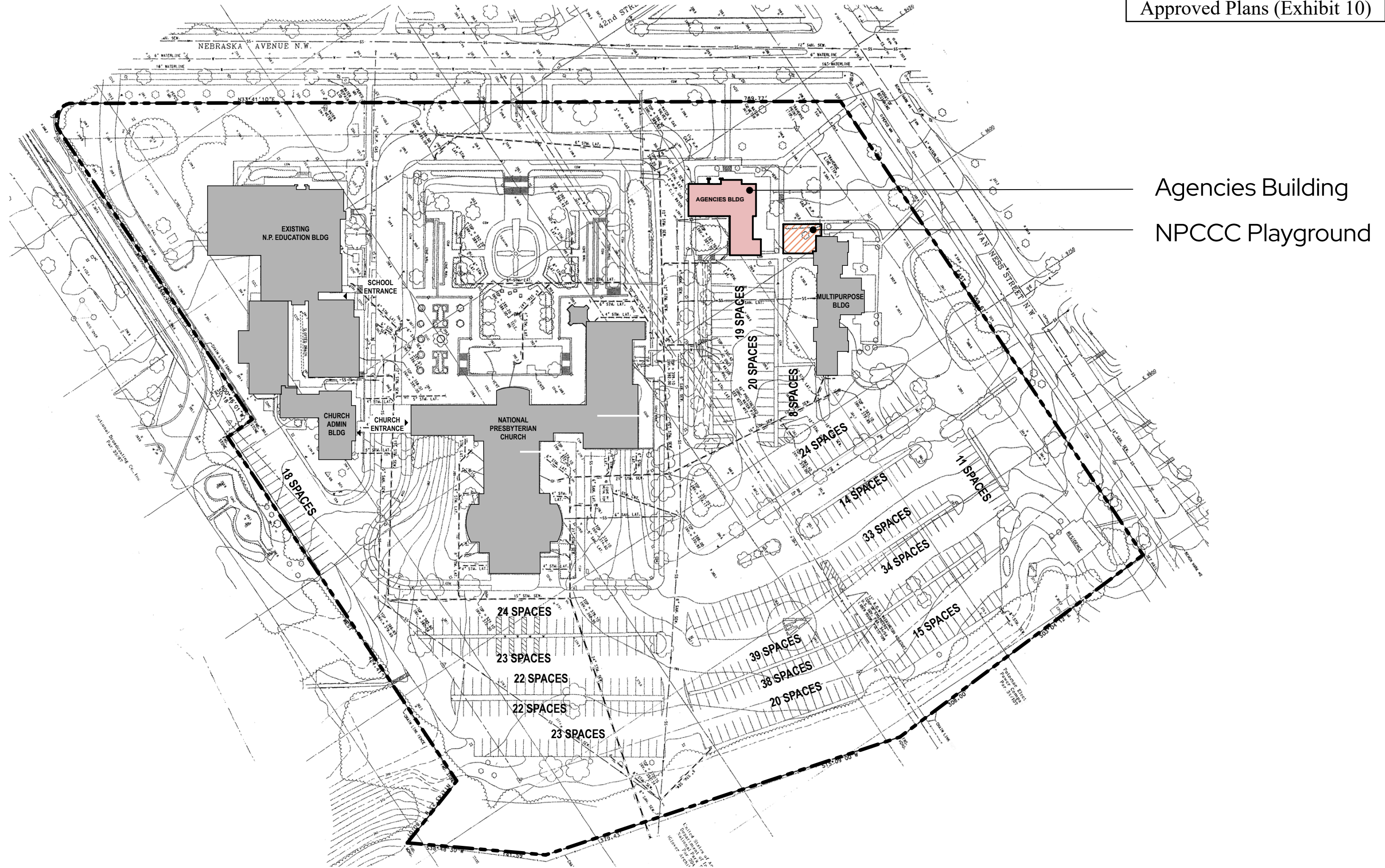
Approved Plans (Exhibit 20B)





Proposed Plans

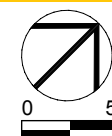


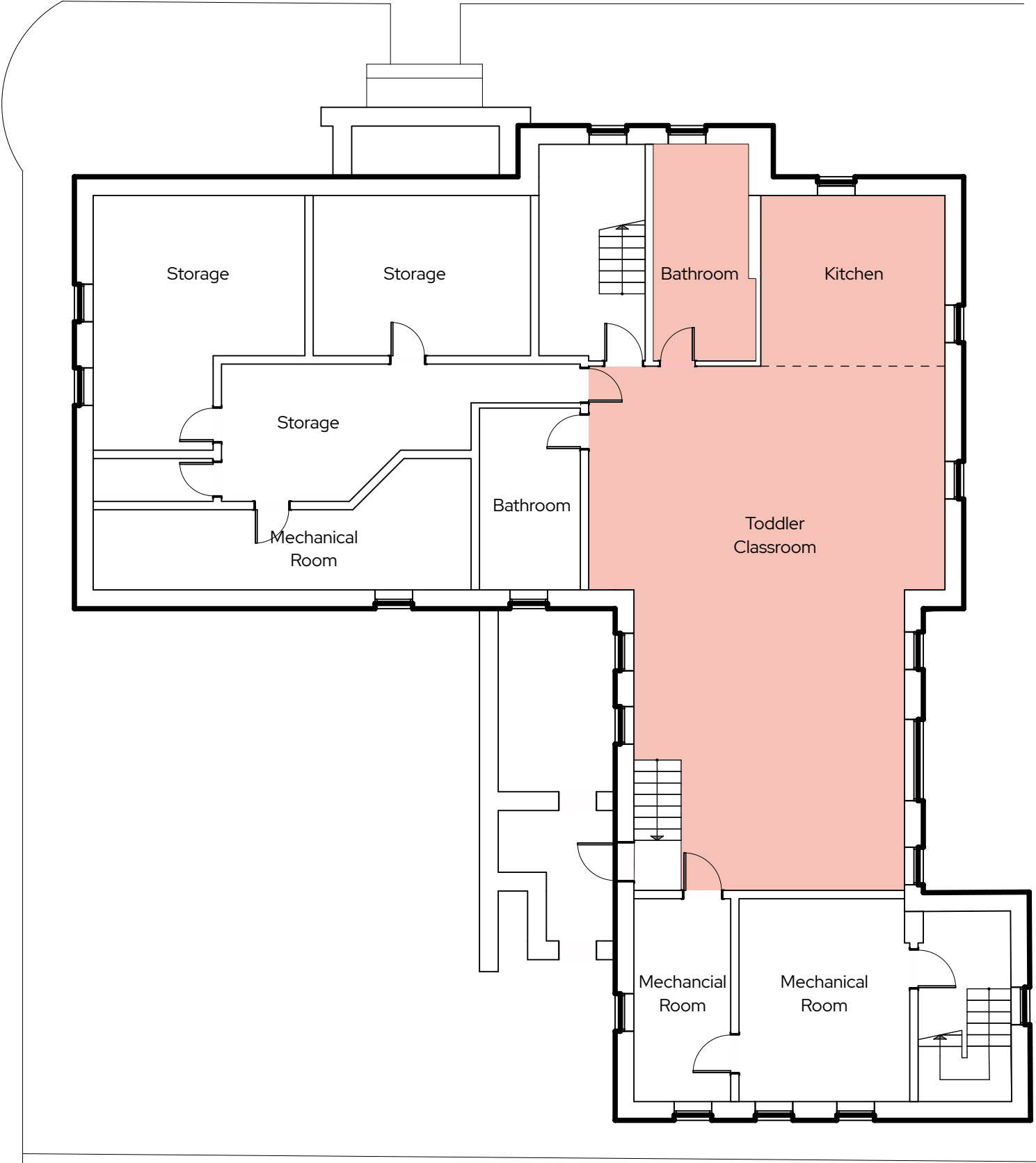


National Presbyterian Church

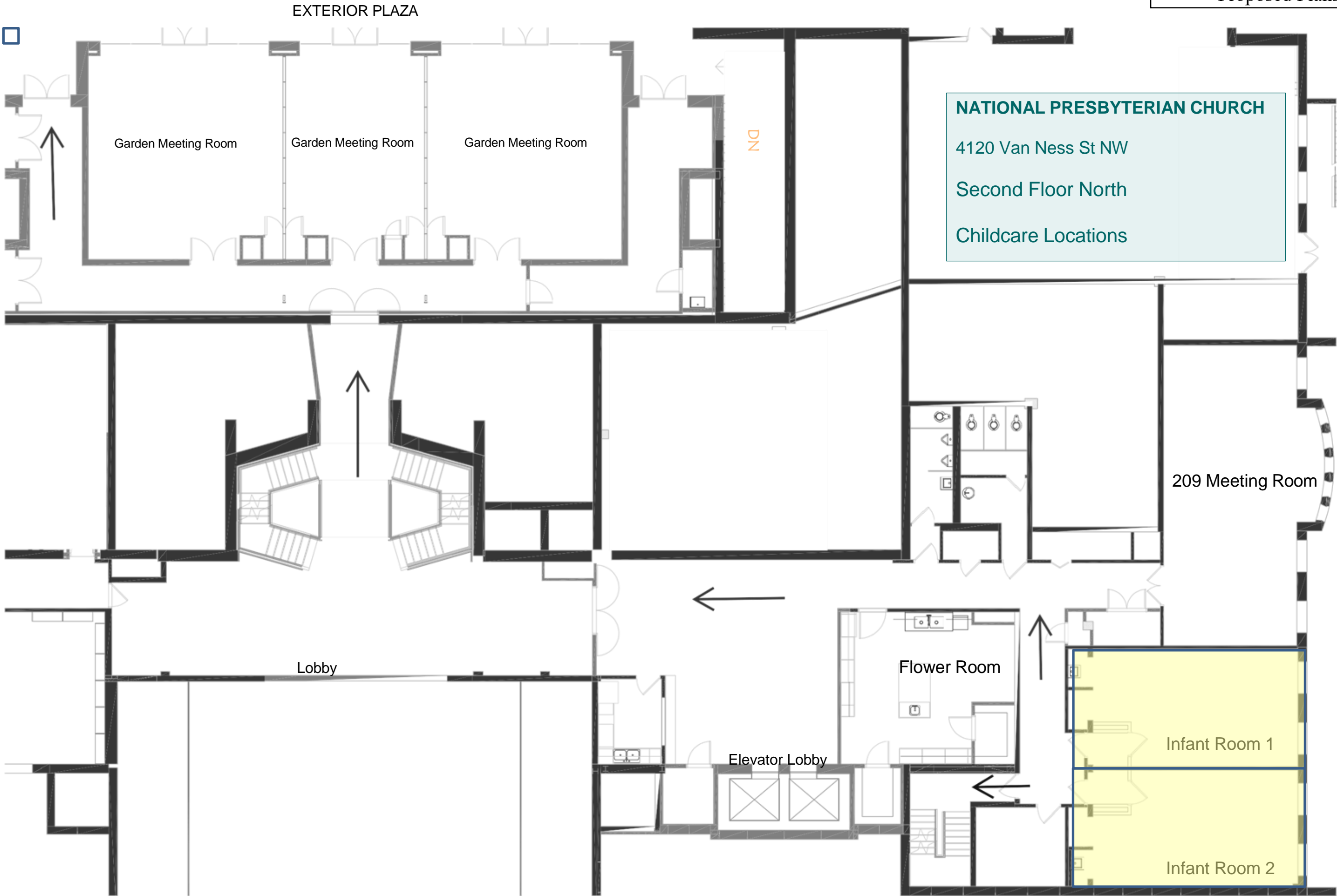
Site Plan

June 14, 2023
printed on Wednesday, June 14, 2023





Proposed NPCCC Toddler Room:
1,325 SF



**NATIONAL PRESBYTERIAN
CHURCH**
4120 Van Ness St NW
Second Floor South
Childcare Locations

Exterior Plaza

