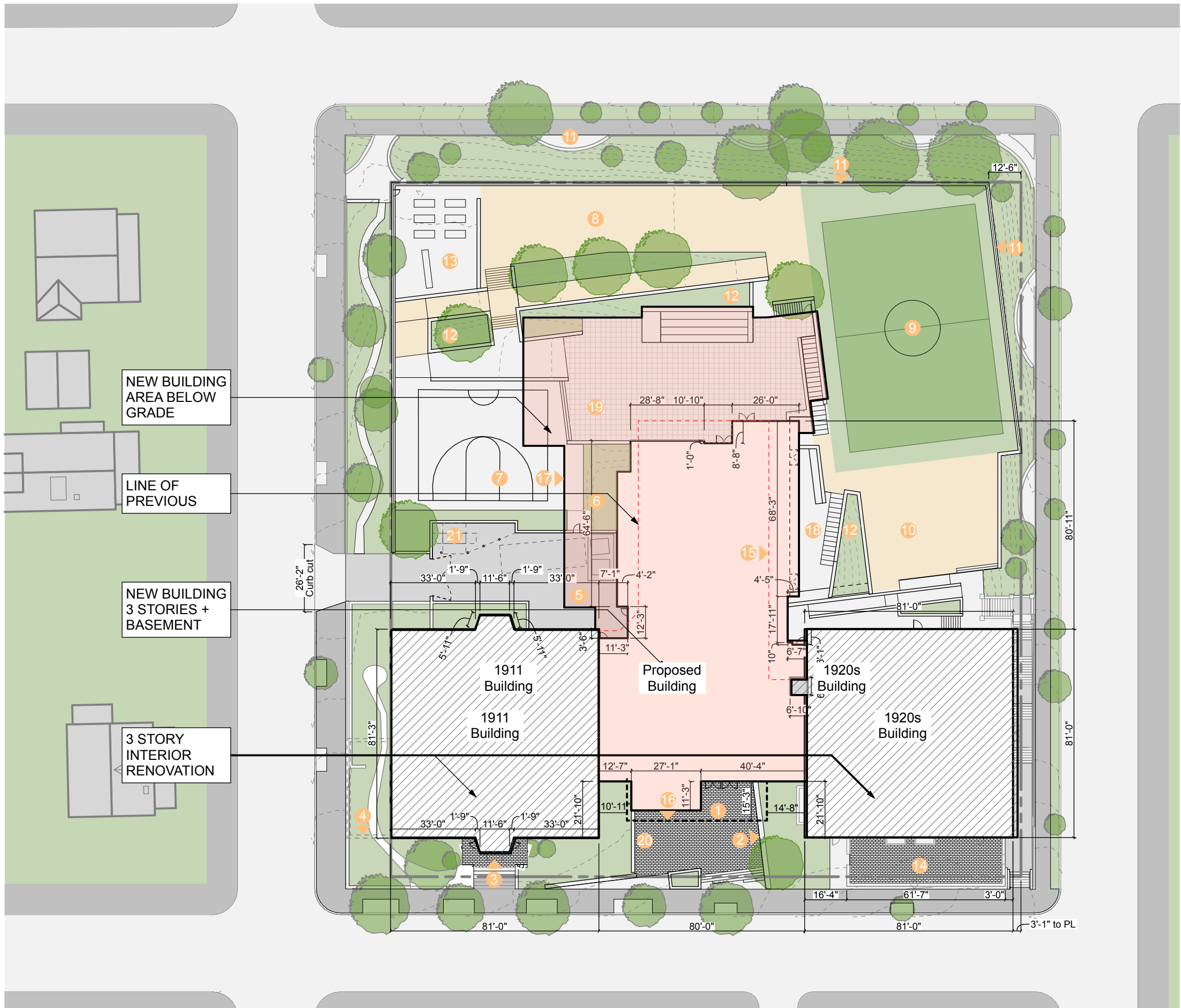
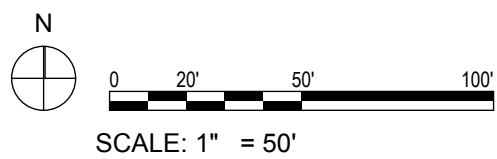
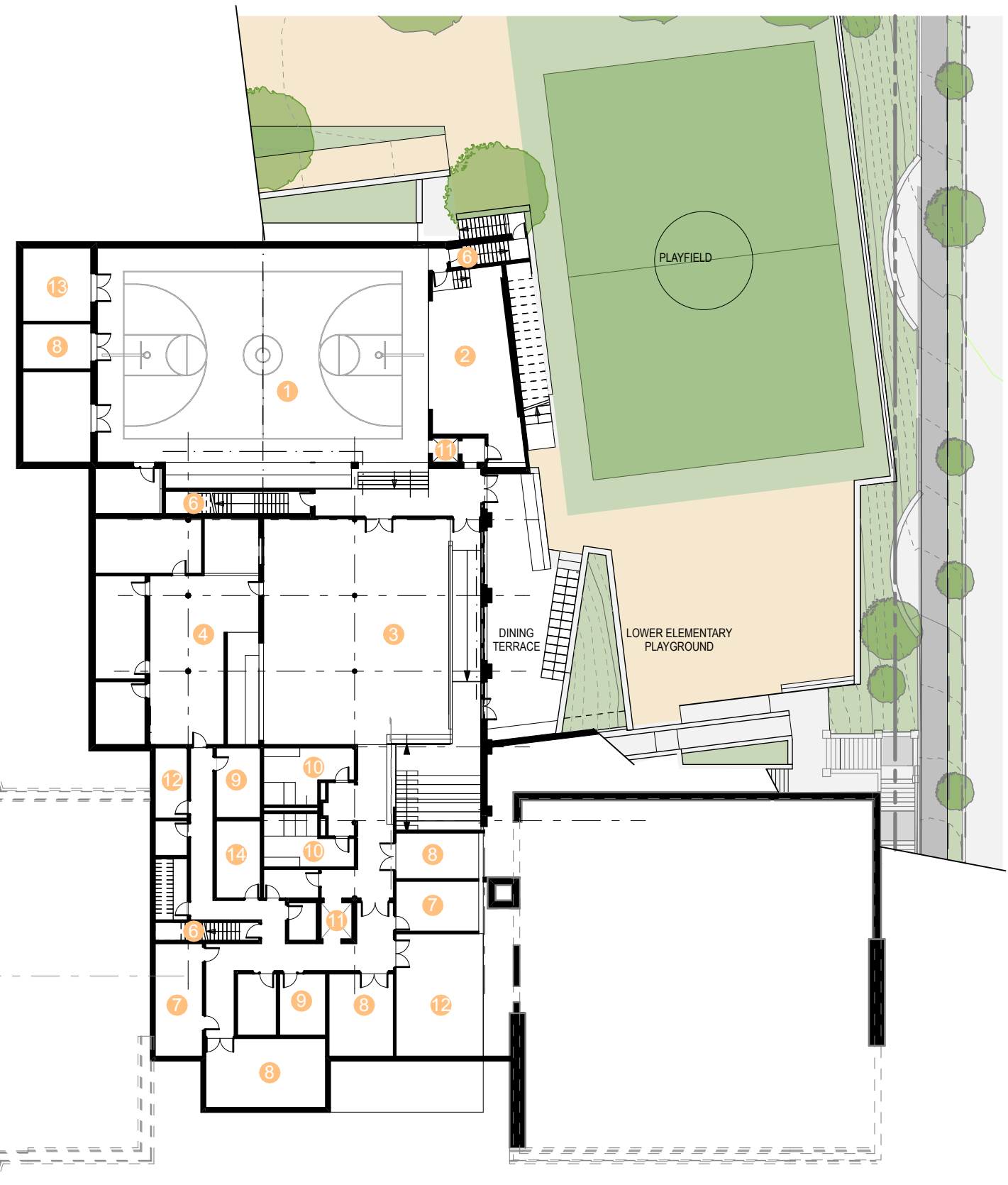


# EXHIBIT D-2

- Proposed Spaces**
- ① Entry Plaza
  - ② Sign Originally from 1920 Connector
  - ③ Original School Entry
  - ④ Partially Demolished Coal Vault
  - ⑤ Loading Area
  - ⑥ Light Well
  - ⑦ Play Court
  - ⑧ Playground
  - ⑨ Artificial Turf Field
  - ⑩ Early Education Playground
  - ⑪ Retaining Wall
  - ⑫ Retaining / Planters
  - ⑬ Teaching Garden
  - ⑭ Early Education Plaza
  - ⑮ Line of Previous Building
  - ⑯ Line of Building Above
  - ⑰ Line of Building Below Grade
  - ⑱ Lower Dining Terrace
  - ⑲ Inhabitable Gym Roof
  - ⑳ Short-Term Bicycle Racks
  - ㉑ Generator

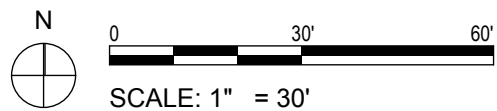
- Area of New Addition at Ground Level
- Area of New Addition below grade
- Area of Renovation

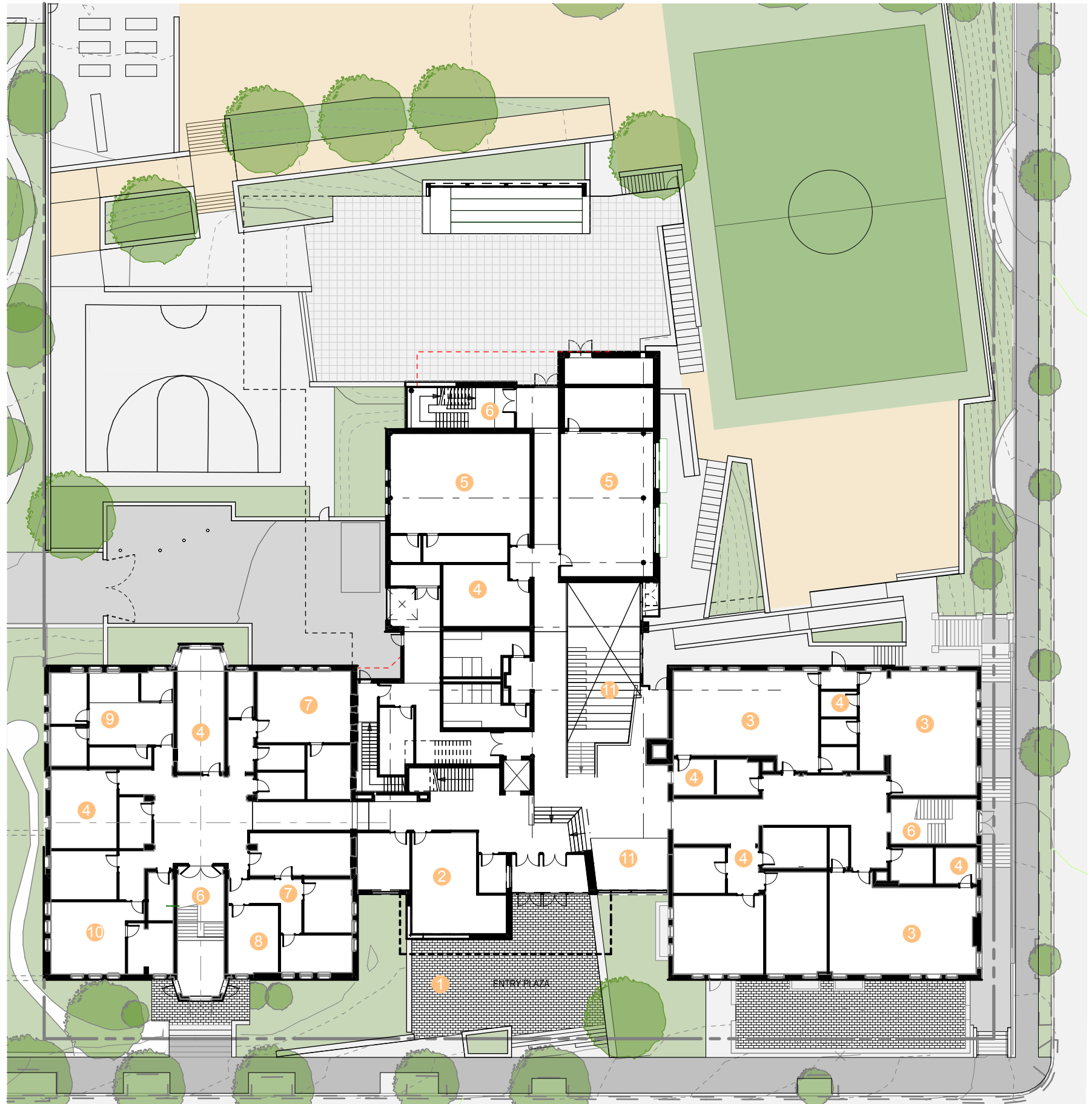




**Proposed Space**

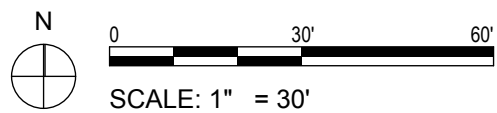
- ① Gymnasium
- ② Stage
- ③ Cafeteria
- ④ Food Service
- ⑤ Discovery Commons
- ⑥ Stair
- ⑦ Electrical
- ⑧ Storage
- ⑨ Custodial
- ⑩ Restrooms
- ⑪ Elevator / Lift
- ⑫ Mechanical
- ⑬ Long-term Bicycle Storage
- ⑭ Shower / Locker room





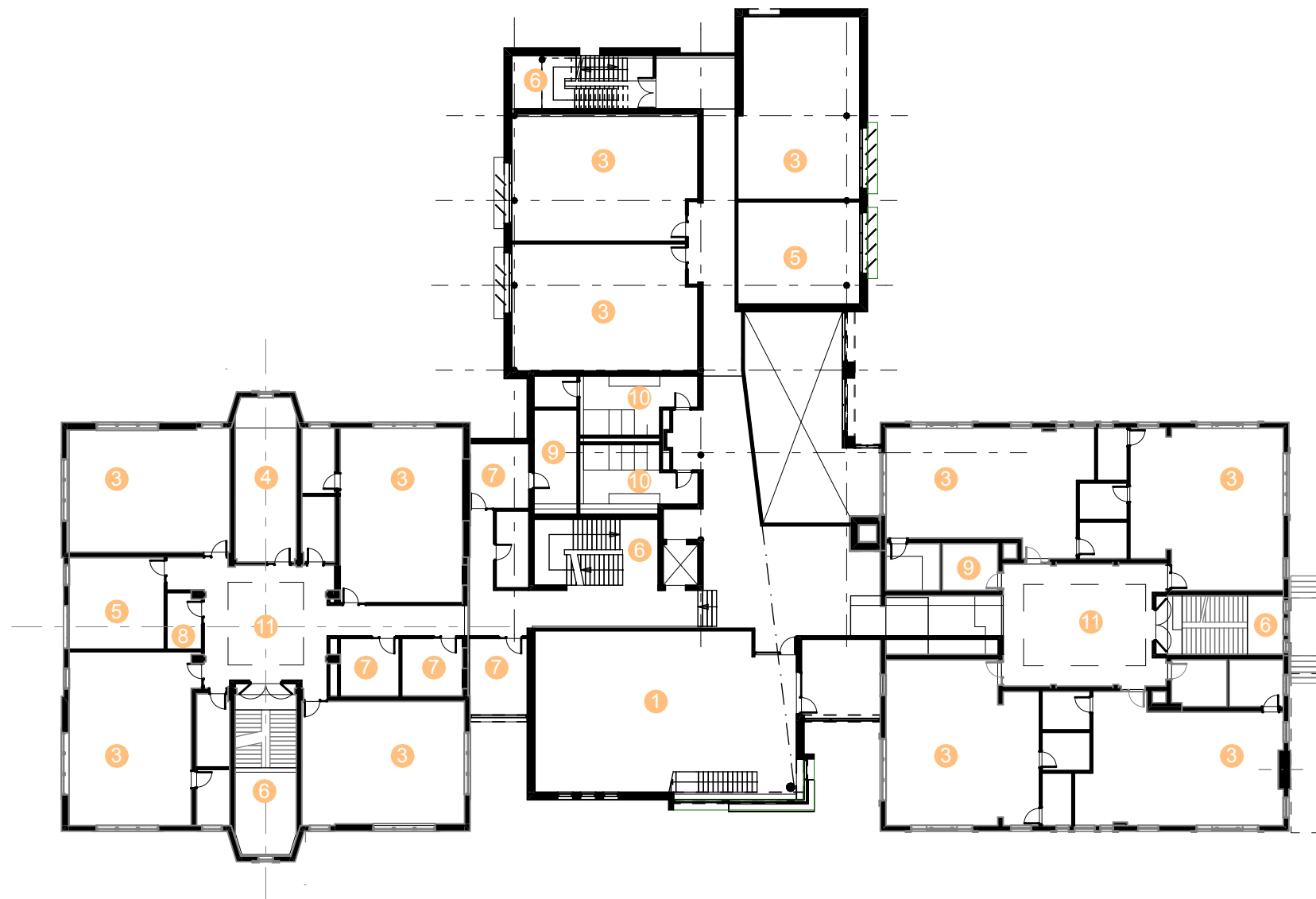
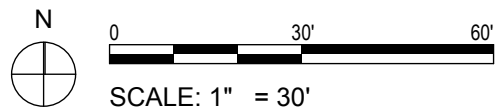
**Proposed Space**

- ① Entry Plaza
- ② Welcome Center / Security
- ③ Primary / Early Education Classroom
- ④ Educational Support
- ⑤ Specials Classroom
- ⑥ Stair
- ⑦ Administrative Suite
- ⑧ Storage
- ⑨ Health Suite
- ⑩ Educational Enrichment Offices
- ⑪ Discovery Commons



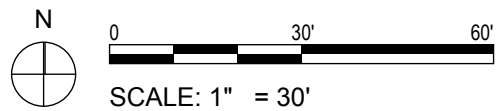
**Proposed Space**

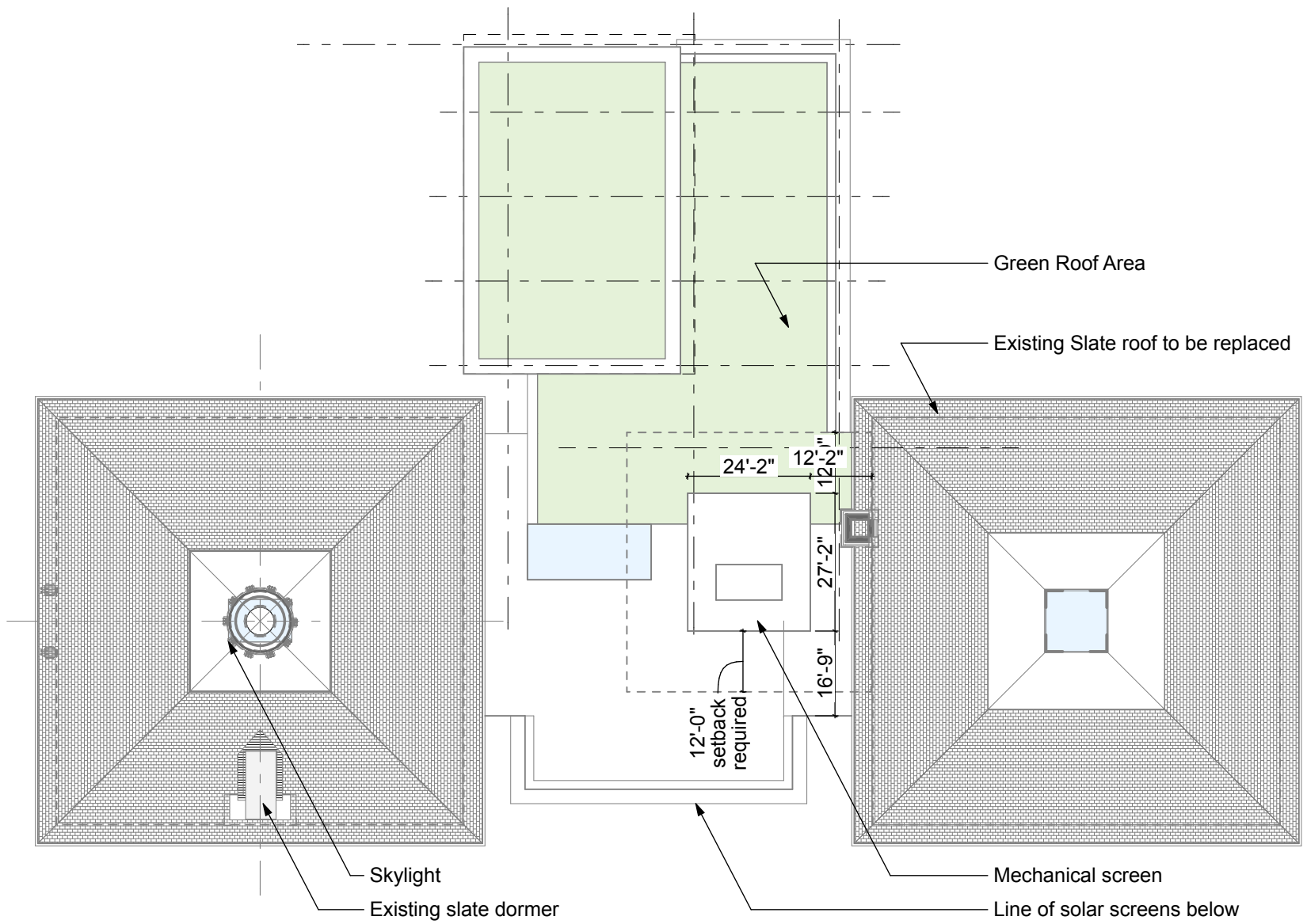
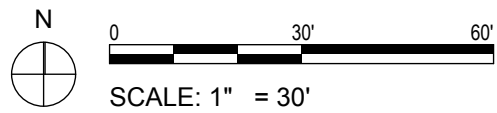
- ① Library
- ② Specials Classroom
- ③ Primary / Early Education Classroom
- ④ Educational Support
- ⑤ Specials Classroom
- ⑥ Stair
- ⑦ Administrative Suite
- ⑧ Storage
- ⑨ Mechanical
- ⑩ Restrooms
- ⑪ Discovery Commons



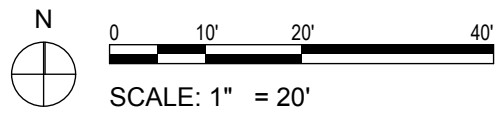
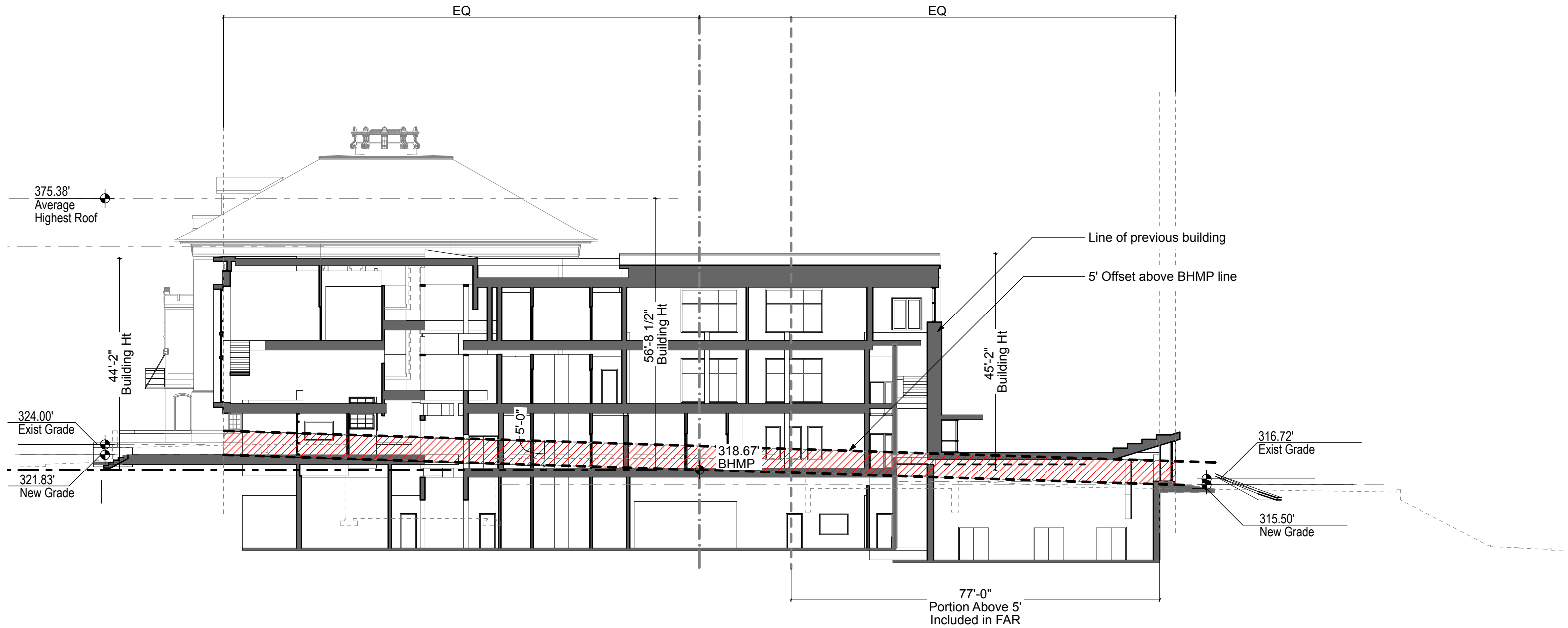
**Proposed Space**

- ① Library
- ② Specials Classroom
- ③ Primary / Early Education Classroom
- ④ Educational Support
- ⑤ Specials Classroom
- ⑥ Stair
- ⑦ Administrative Suite
- ⑧ Storage
- ⑨ Mechanical
- ⑩ Restrooms
- ⑪ Discovery Commons







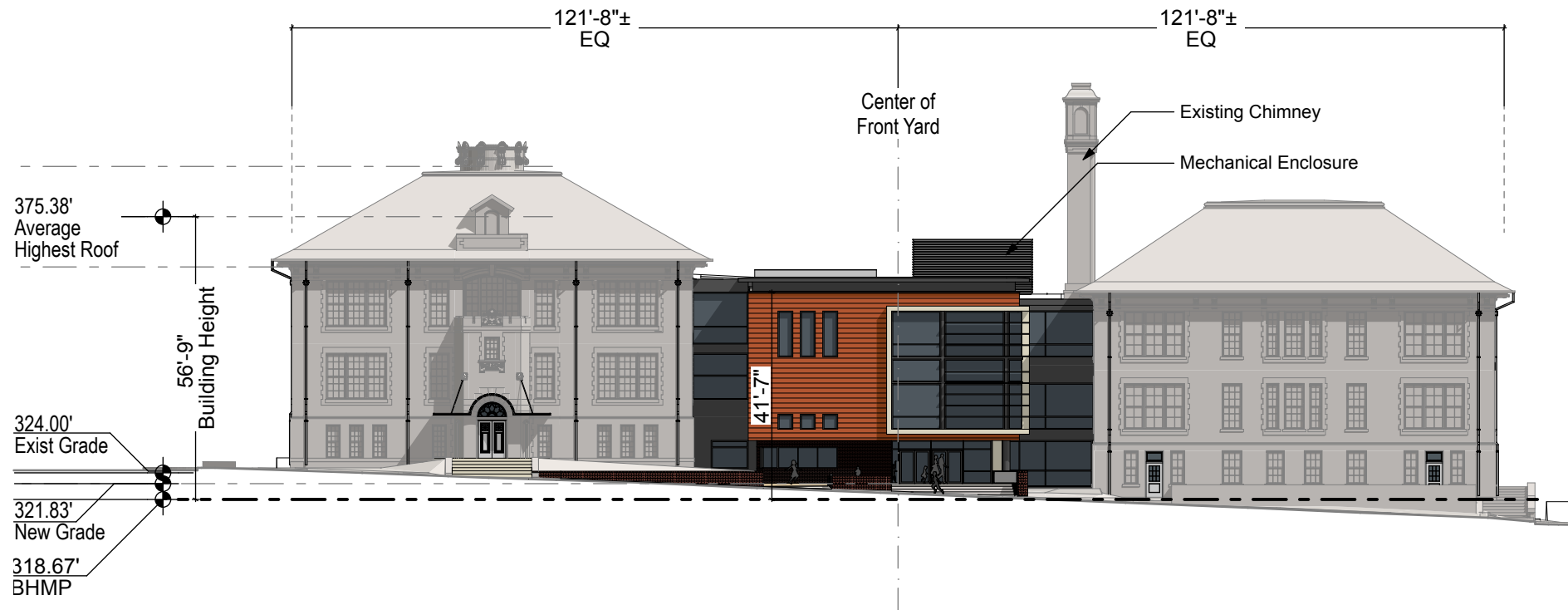


**BZA Submission BHMP**

**JOHN EATON ELEMENTARY SCHOOL MODERNIZATION**

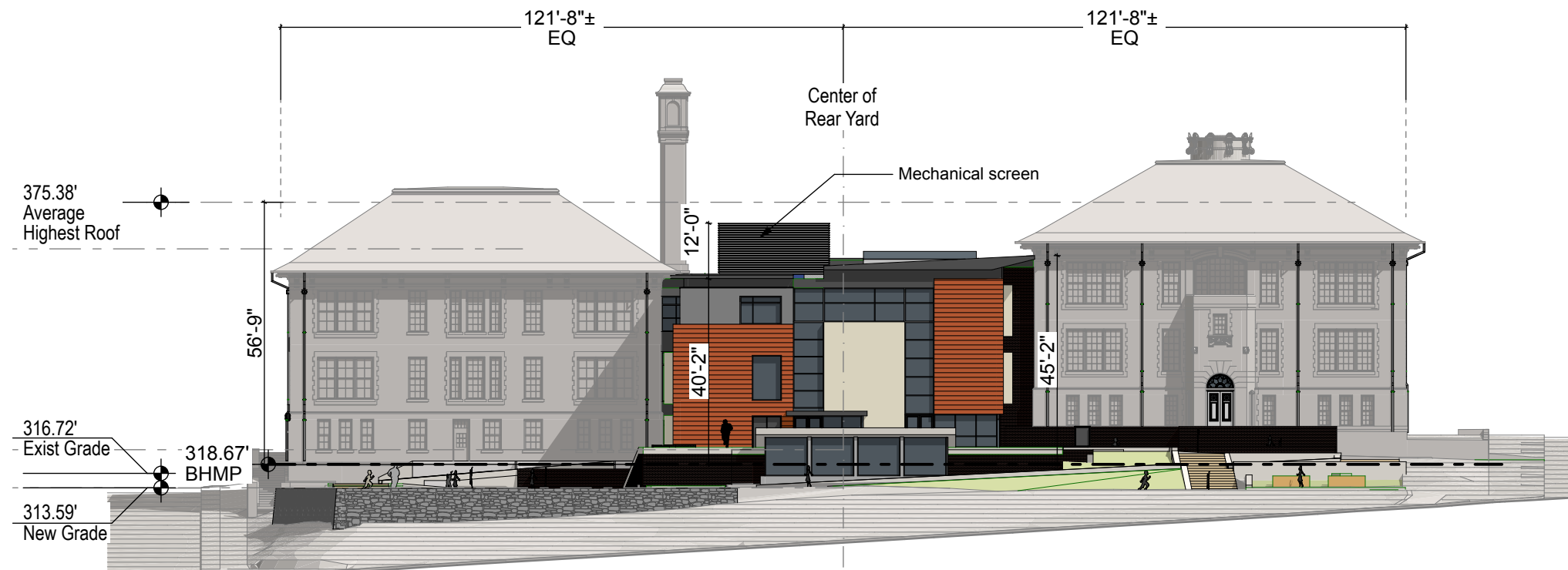






**SOUTH (BHMP) ELEVATION**

SCALE: 1/32" = 1'-0"



**NORTH ELEVATION**

SCALE: 1/32" = 1'-0"



SCALE: 3/32" = 1'-0"



**EAST ELEVATION**

SCALE: 1/32" = 1'-0"



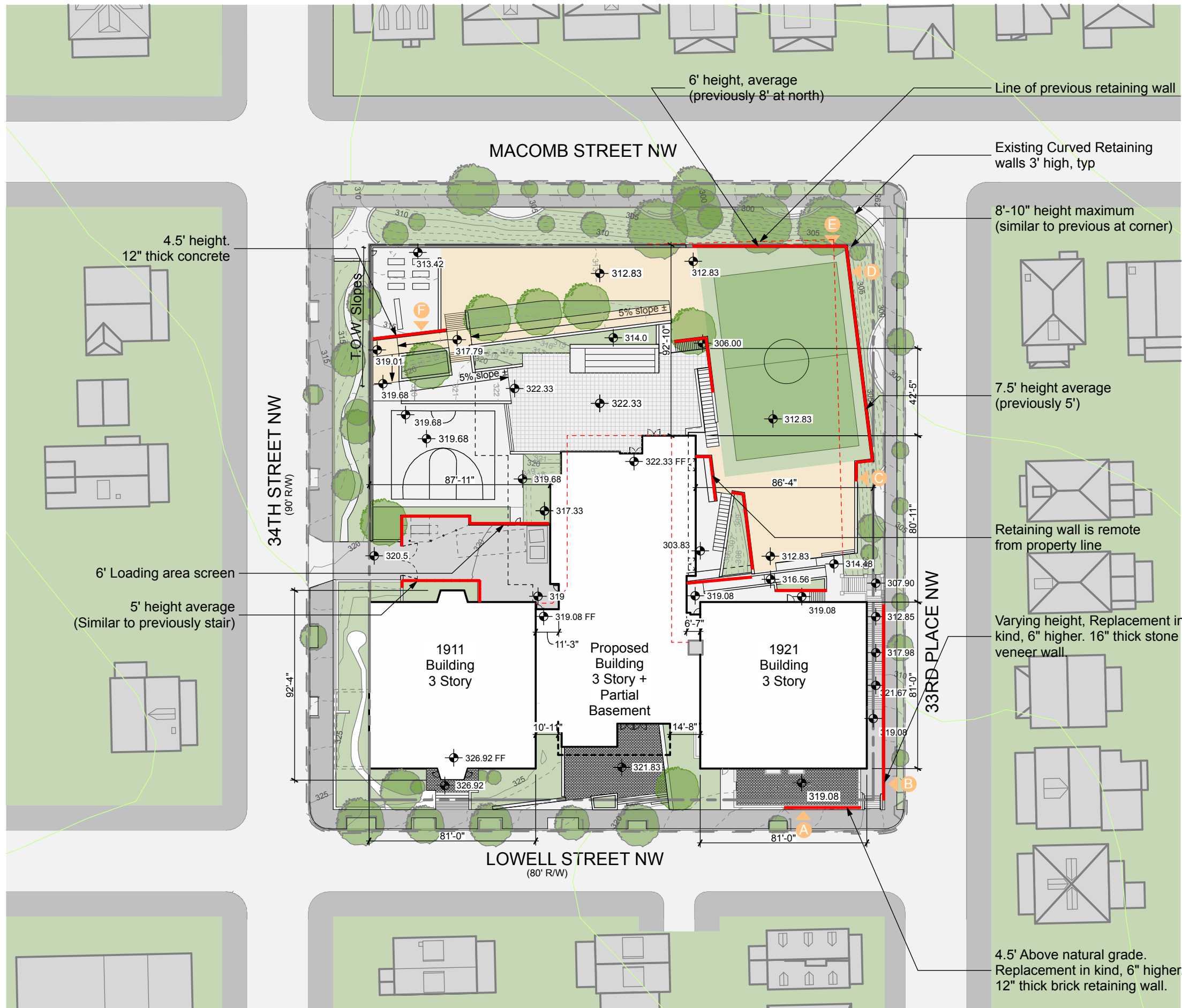
**WEST ELEVATION**

SCALE: 1/32" = 1'-0"



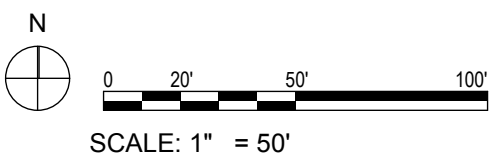
SCALE: 3/32" = 1'-0"





Wall ID, new wall over 4'

Retaining walls in excess of 4'



4.5' height.  
12" thick concrete

6' Loading area screen  
5' height average  
(Similar to previously stair)

6' height, average  
(previously 8' at north)

Line of previous retaining wall

Existing Curved Retaining walls 3' high, typ

8'-10" height maximum  
(similar to previous at corner)

7.5' height average  
(previously 5')

Retaining wall is remote from property line

Varying height, Replacement in kind, 6" higher. 16" thick stone veneer wall

4.5' Above natural grade. Replacement in kind, 6" higher. 12" thick brick retaining wall.

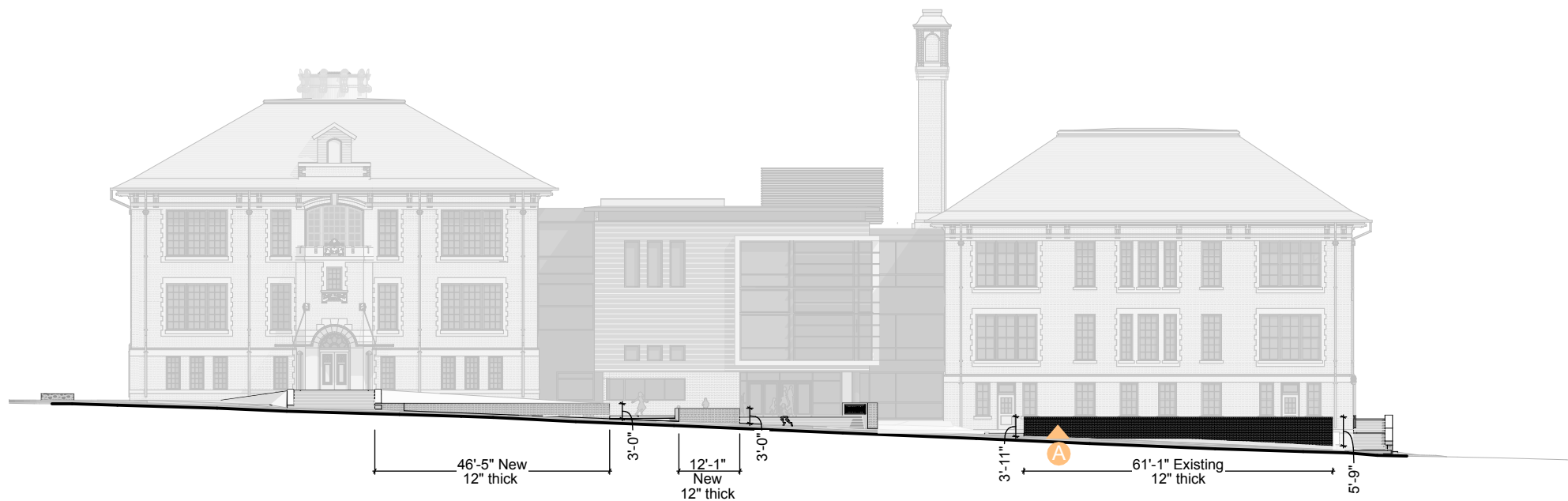
**BZA Submission Proposed Grading**

JOHN EATON ELEMENTARY SCHOOL MODERNIZATION

**cox graae + spack architects**

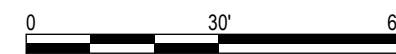
APRIL 30, 2019  
copyright © cox graae + spack architects 2019



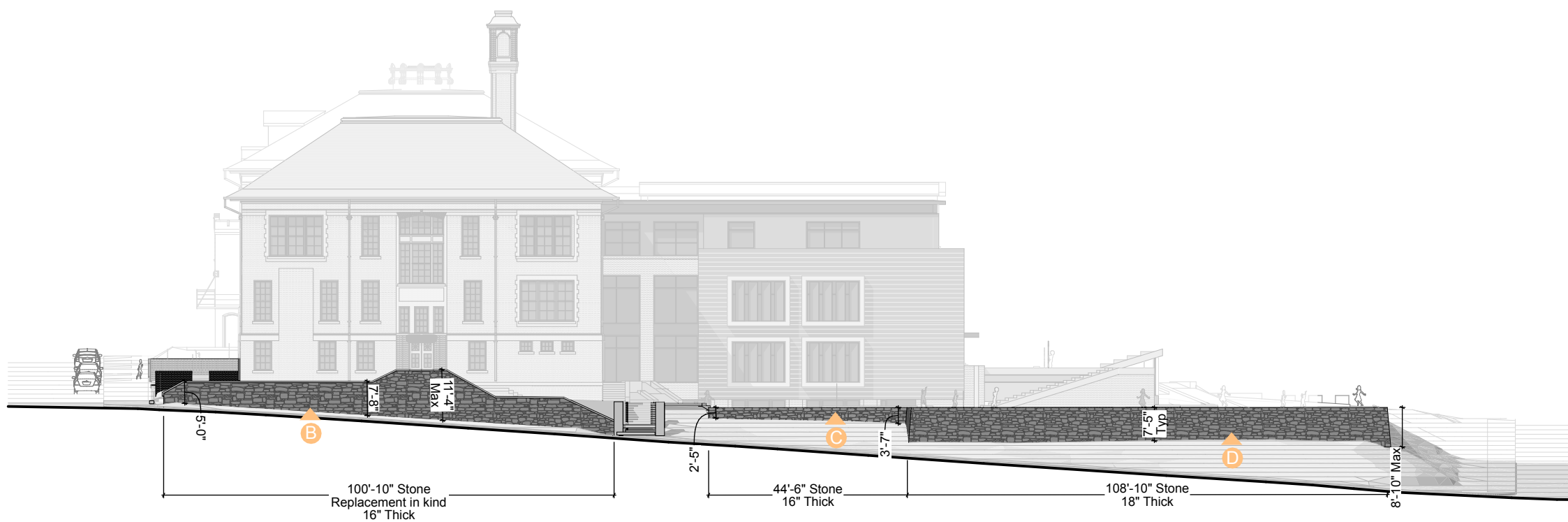


South Site Wall Elevation

SCALE: 1" = 30'



SCALE: 1" = 30'



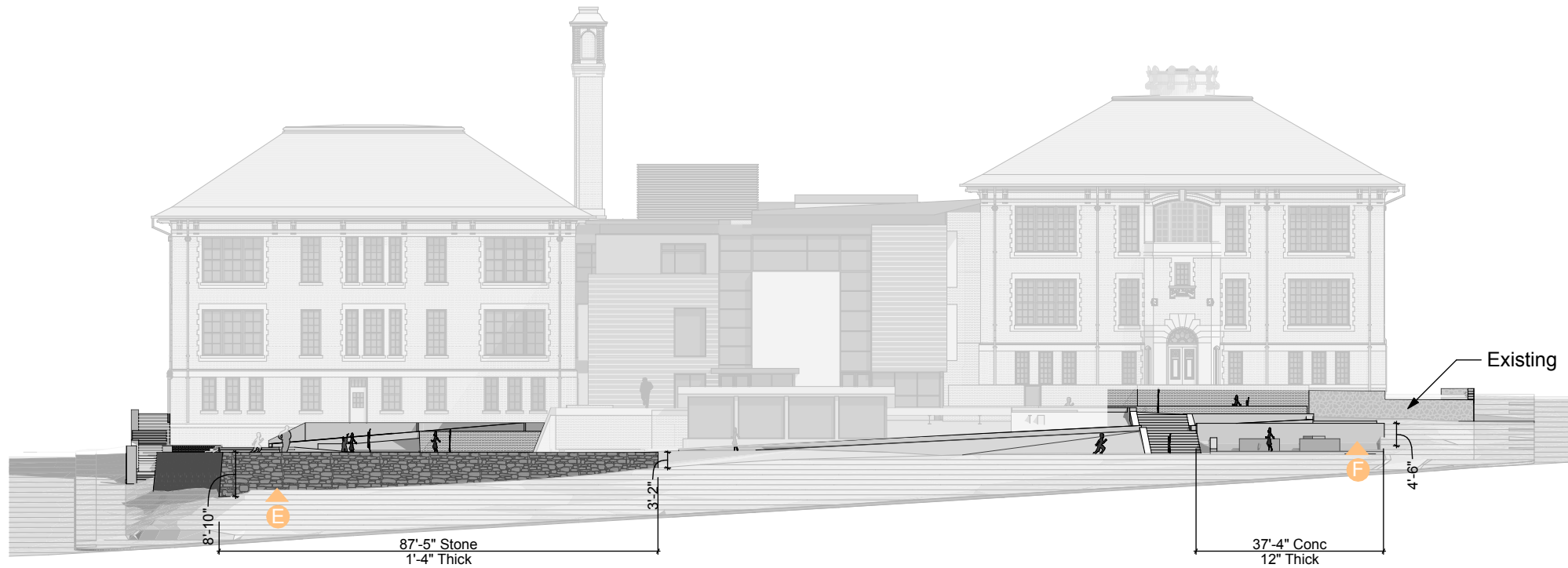
East Site Wall Elevation

SCALE: 1" = 30'

BZA Submission **Retaining Walls**

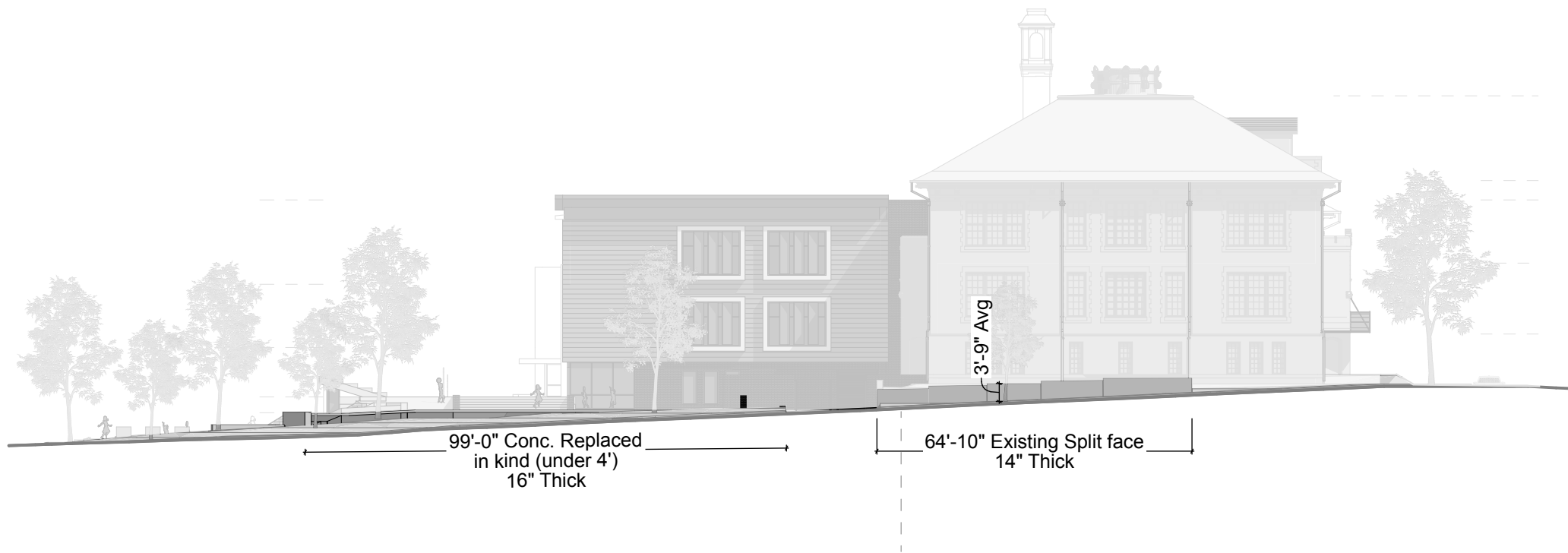
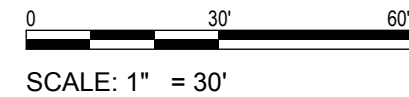
JOHN EATON ELEMENTARY SCHOOL MODERNIZATION





North Site Wall Elevation

SCALE: 1" = 30'



West Site Wall Elevation

SCALE: 1" = 30'

BZA Submission **Retaining Walls**

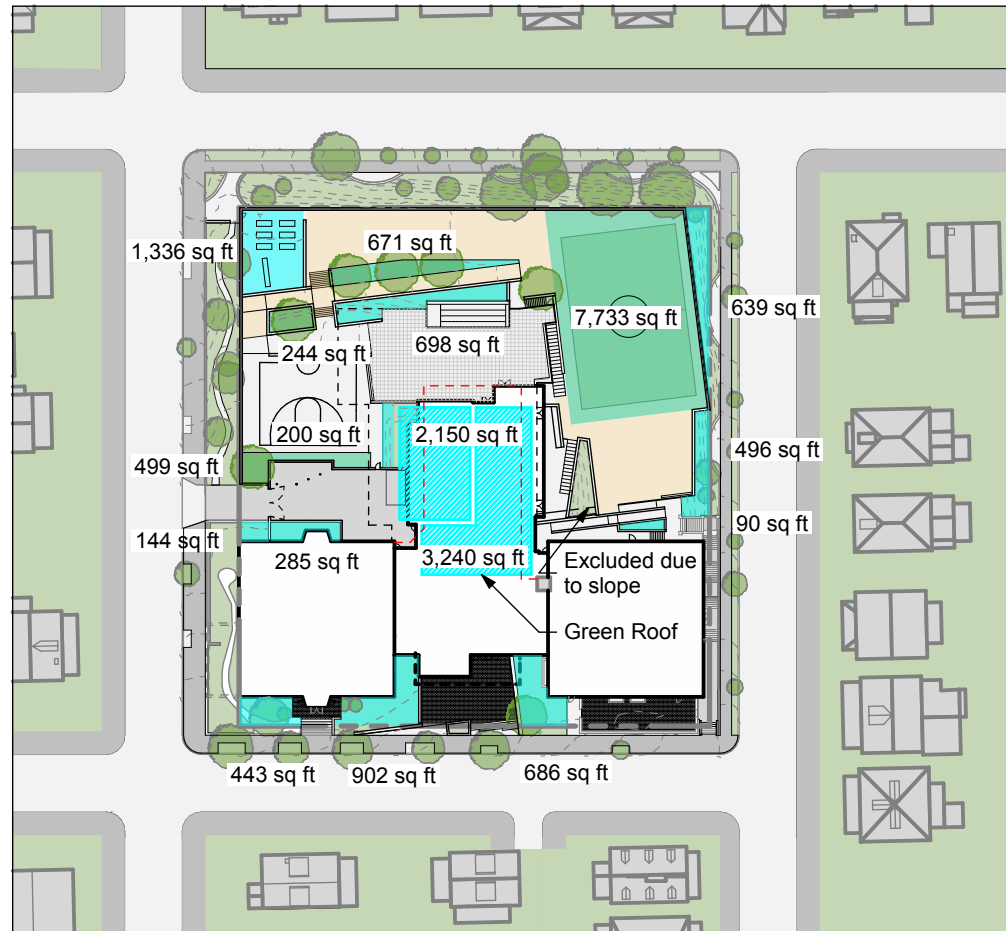
JOHN EATON ELEMENTARY SCHOOL MODERNIZATION





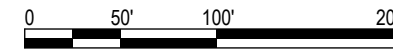
Existing Porous Area

SCALE: 1" =100'



Proposed Porous Area

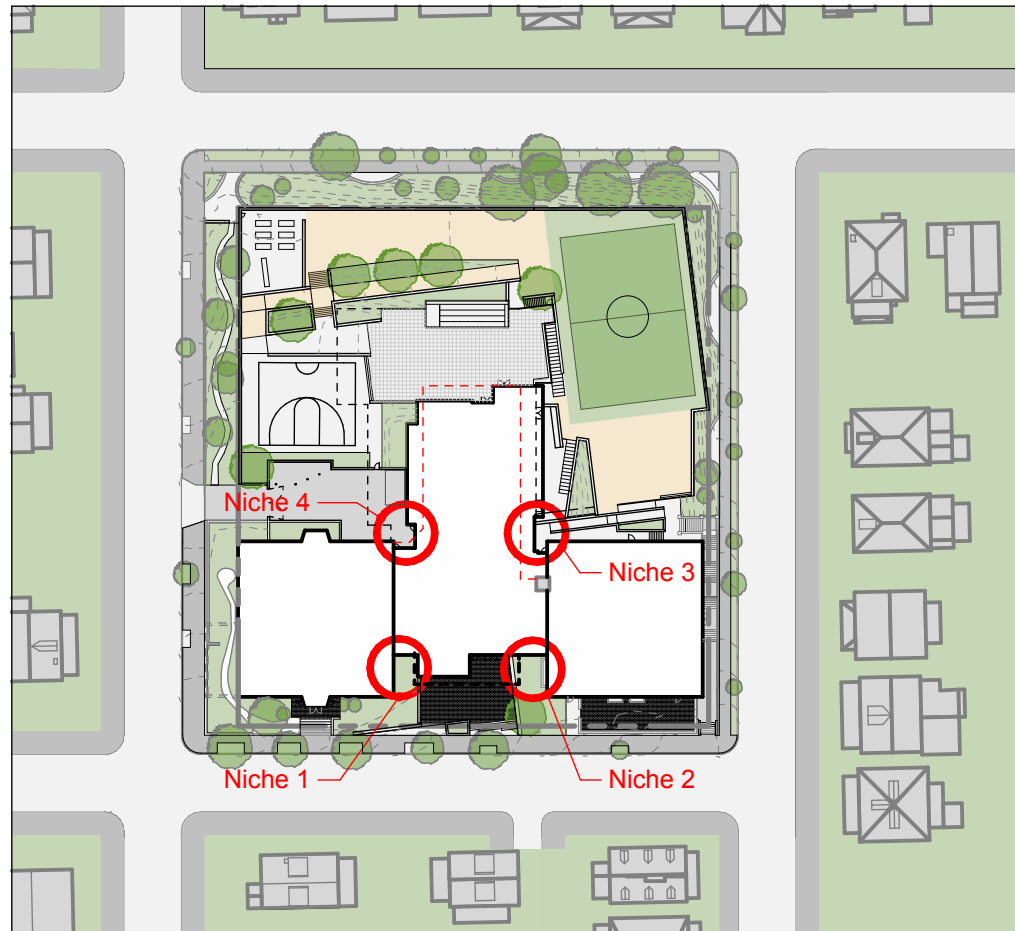
SCALE: 1" =100'



SCALE: 1" =100'

Porous Area		
	Existing	Proposed
Turf	8795	7,733
Area to Property line	2840	639
	110	496
	47	686
	683	902
	456	443
Planters	126	144
	458	285
	464	200
	362	499
	660	244
	379	698
	574	671
		90
		323
Green Roof		2,150
		3,240
Teaching Garden		1,336
<b>TOTAL</b>	<b>15954 sf</b>	<b>20,779 sf</b>

Pervious Area Required (Per C-1609)  
 30% x 66,150 = 19,845 sf

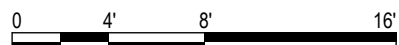


Court Niche Conditions

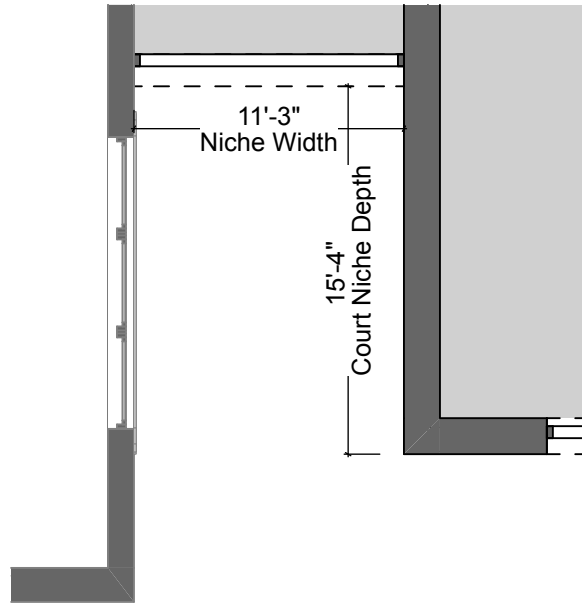
SCALE: 1" = 100'



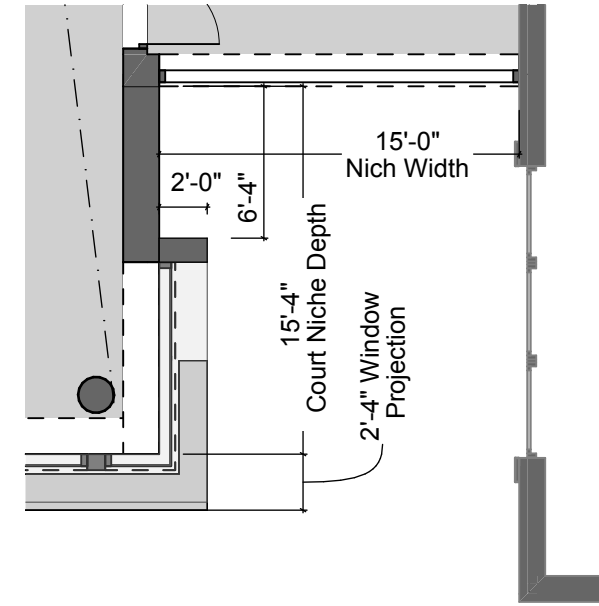
SCALE: 1" = 100'



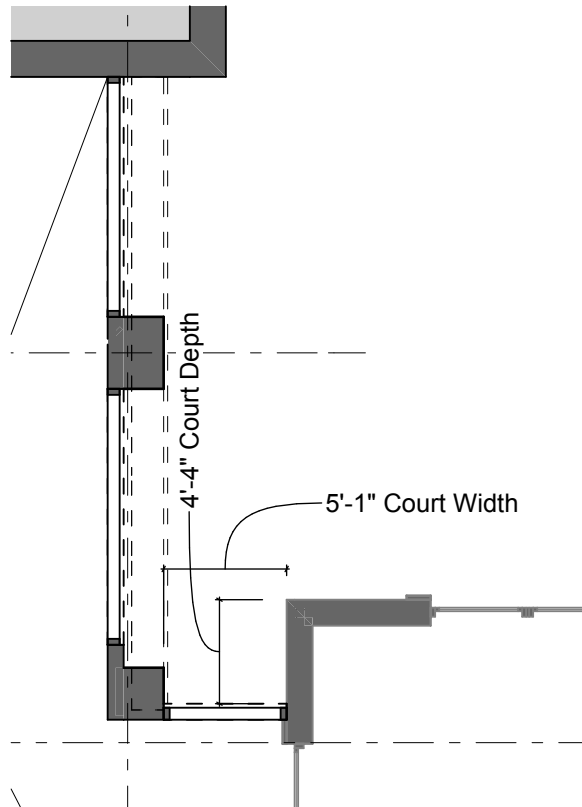
SCALE: 1/8" = 1'-0"



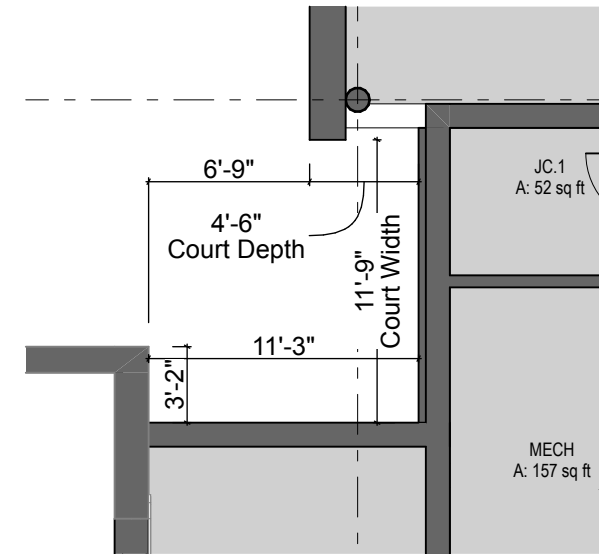
① Niche Diagram  
SCALE: 1/8" = 1'-0"



② Niche Diagram  
SCALE: 1/8" = 1'-0"

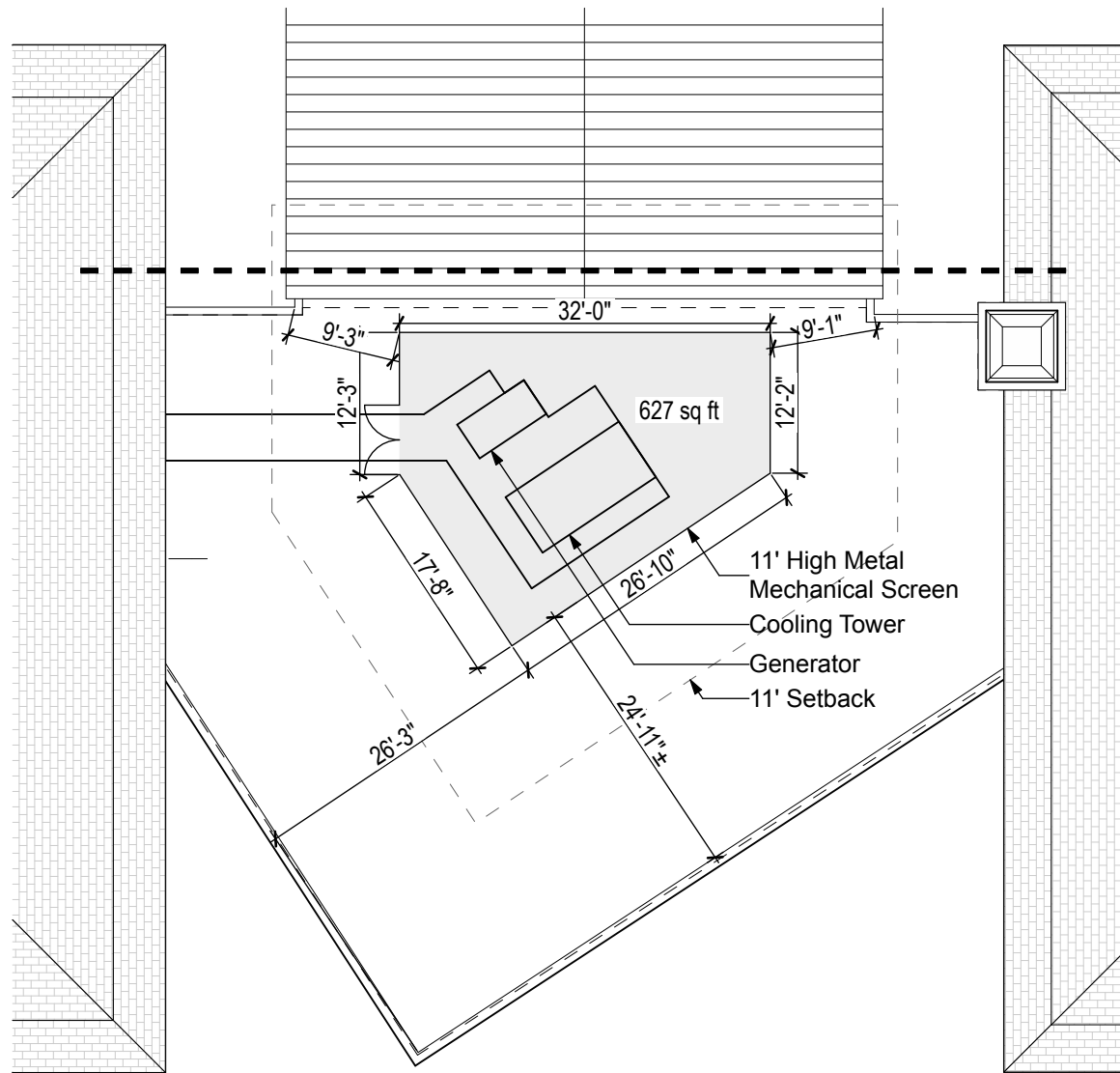


③ Niche Diagram  
SCALE: 1/8" = 1'-0"

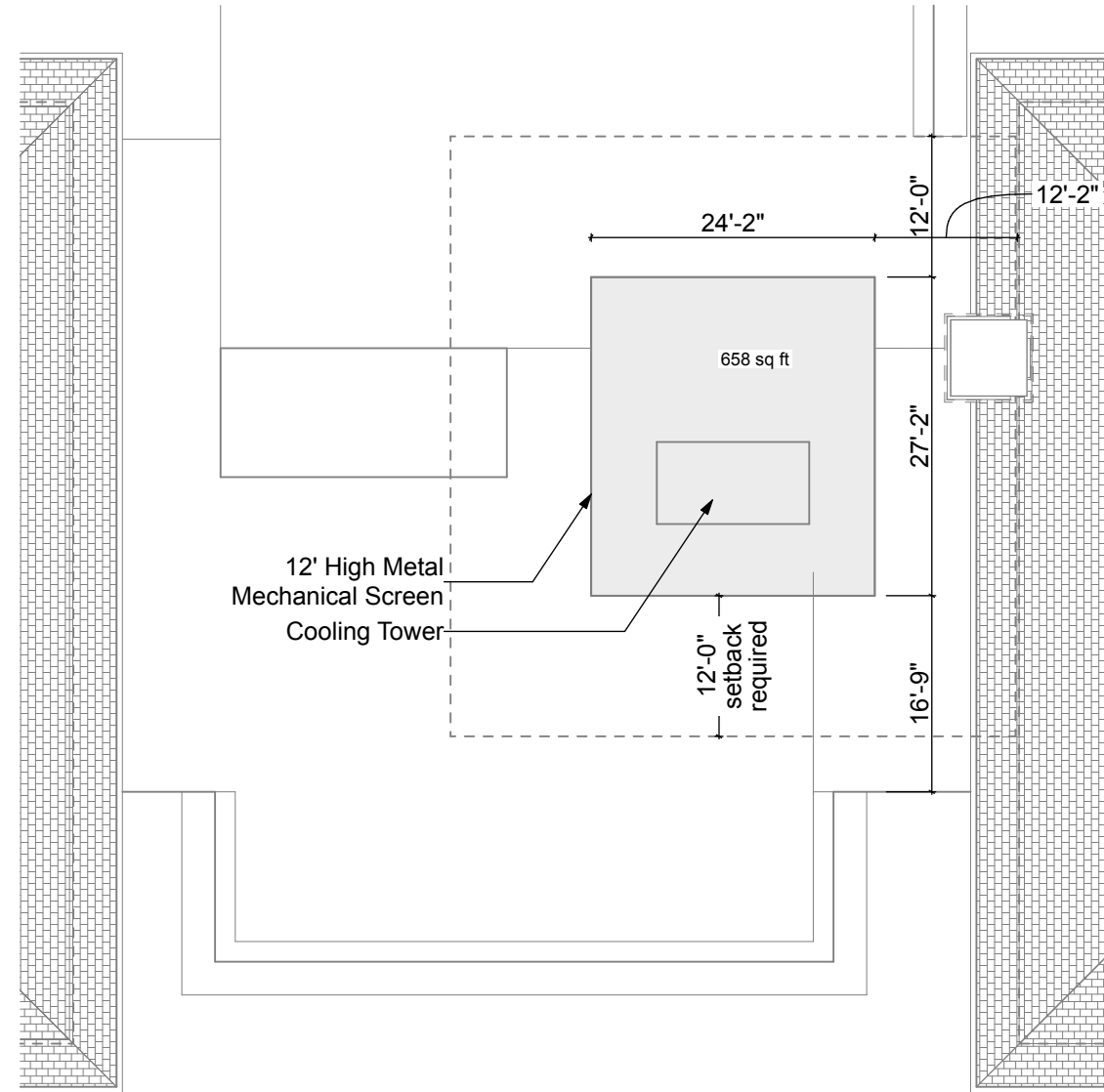


④ Niche Diagram  
SCALE: 1/8" = 1'-0"





Penthouse - to be Demolished  
SCALE: 1/16" = 1'-0"



Penthouse - Proposed  
SCALE: 1/16" = 1'-0"

