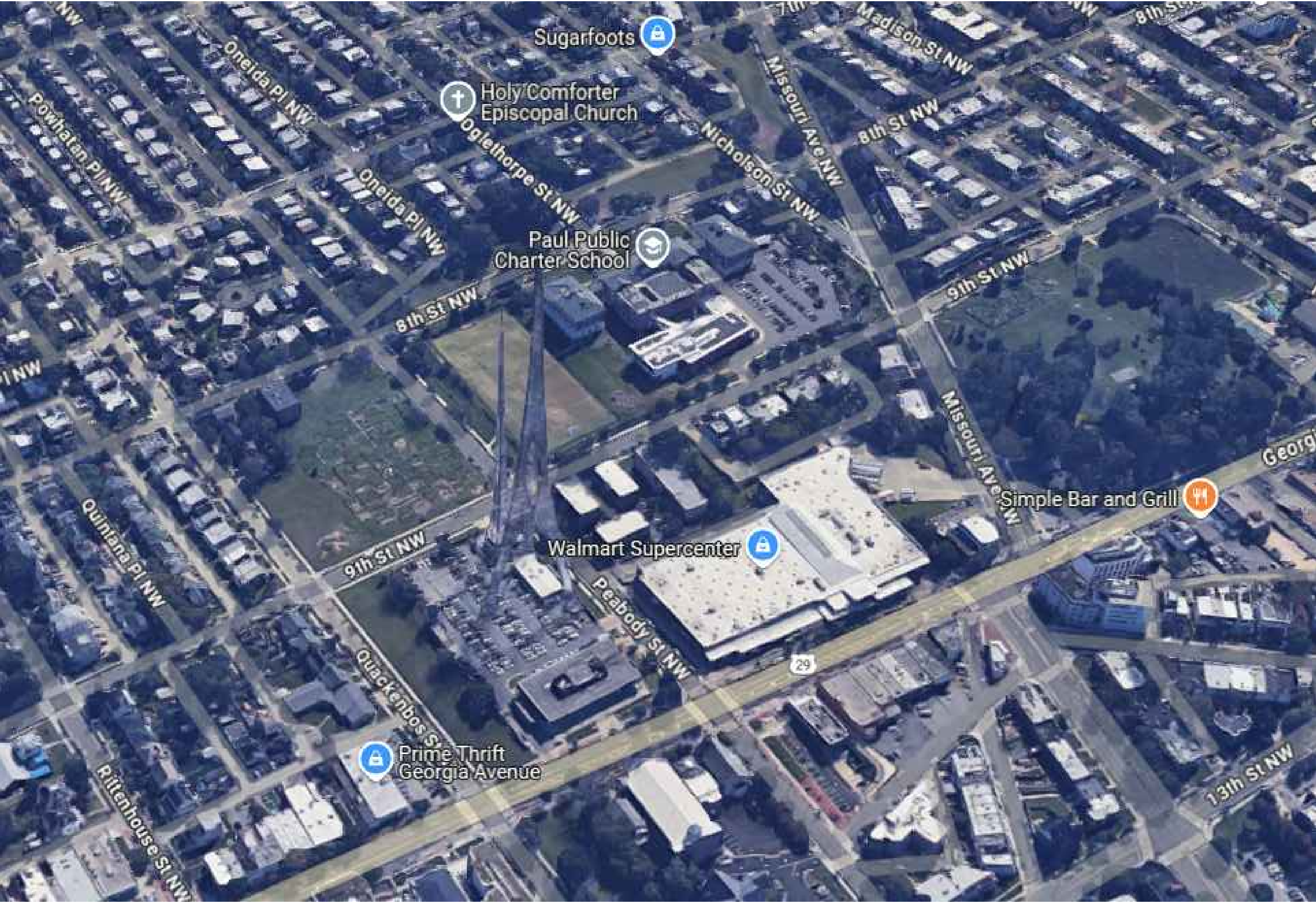


DIAGRAM OF EXISTING TOWER IN RELATION TO AVERAGE TREE HEIGHT AVERAGE HEIGHTS 20'-50'. (HIGHEST TREE IN DC IS APPROX. 100')



EXISTING TOWERS HEIGHT IN RELATION TO ADJACENT AREA



ARIEL VIEW FROM THE U.S AIR FORCE MEMORIAL IN ARLINGTON



ARIEL VIEW OF EXISTING TOWERS IN RELATION TO THE WHITE HOUSE



EYE LEVEL VIEW OF THE TOWERS FROM 9TH ST NW



DC TREE MAP WITHIN APPROX. 0.25 MILE FROM THE EXISTING TOWER

SCALE: NTS

**ALPHATEC** PC  
ENGINEERS  
ARCHITECTS  
PLANNERS  
WASHINGTON, D.C.

**TREE DIAGRAM**  
**MPD 4D TOWER**  
6001 GEORGIA AVENUE, NW, WASHINGTON D.C. 20011

DGS

DRAWING No.

SHPO-01

DATE: 04.25.2025