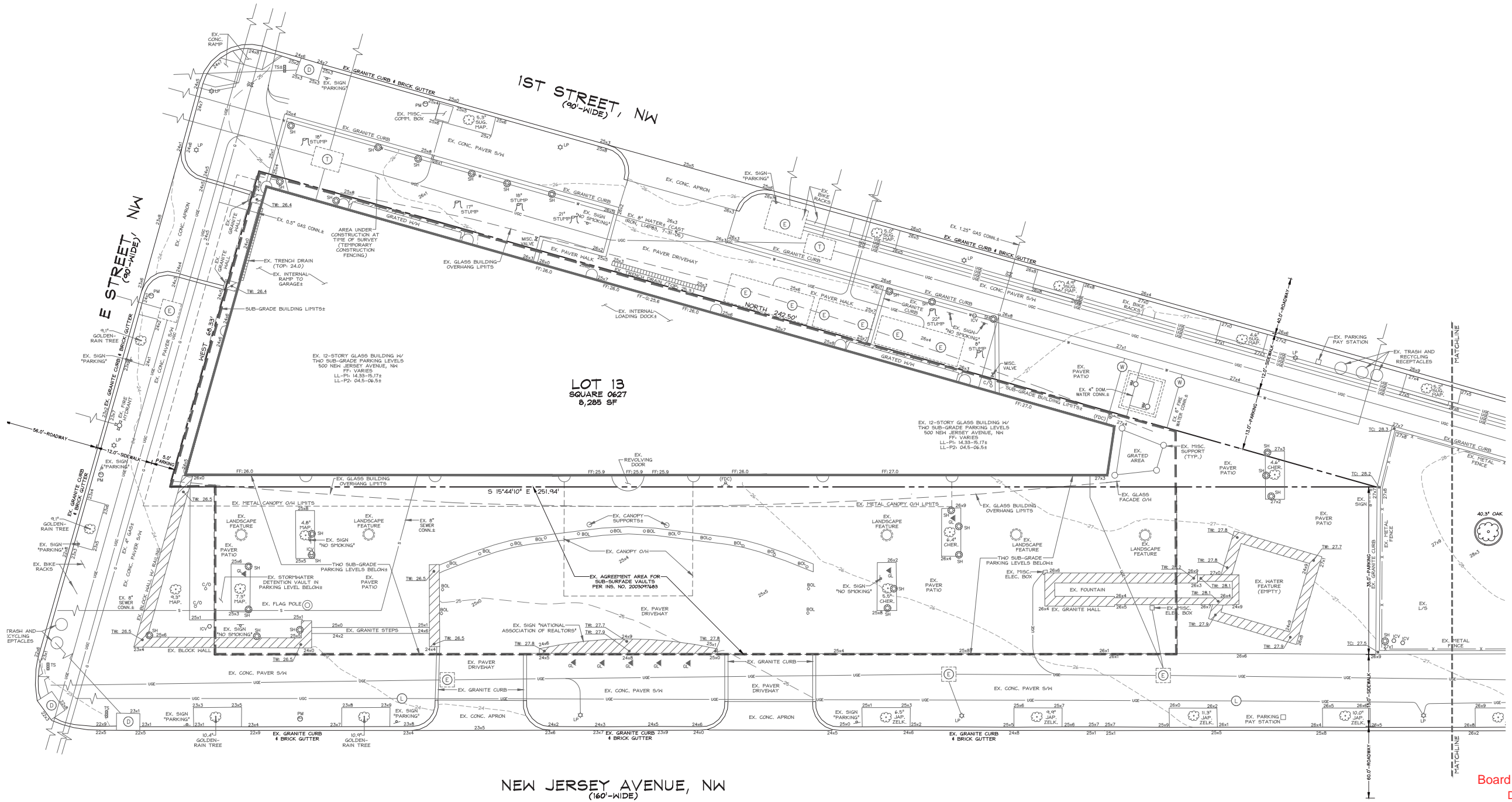
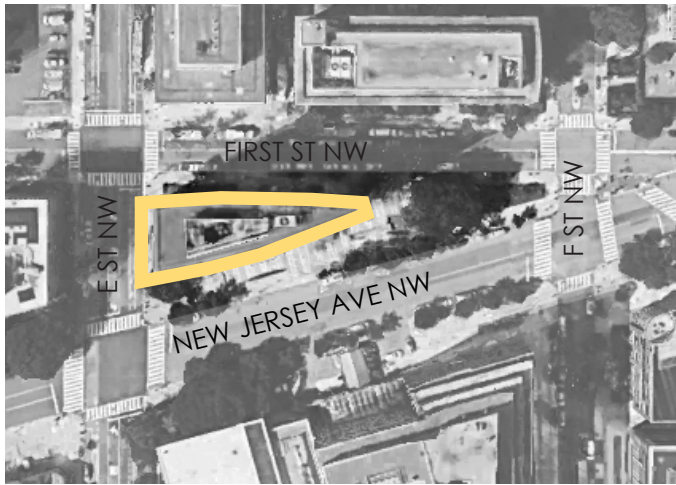


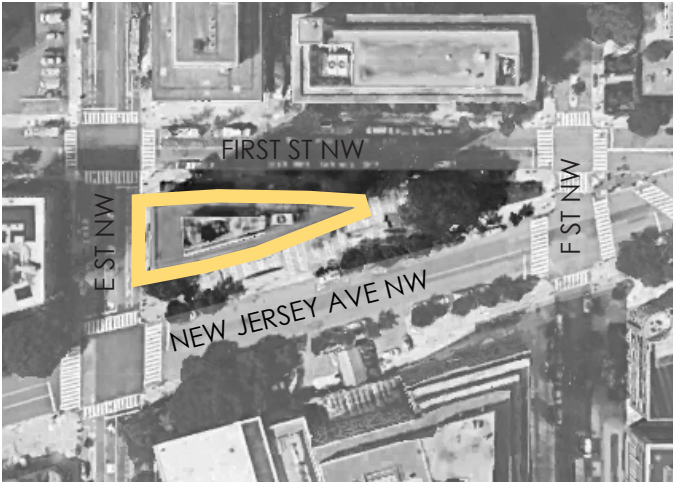
EXISTING
SITE SURVEY



Board of Zoning Adjustment
District of Columbia
CASE NO. 16930A
EXHIBIT NO. 1A2

Map showing the intersection of First St NW and New Jersey Ave NW. A yellow arrow points to the intersection. Labels include: FIRST ST NW, NEW JERSEY AVE NW, E 1ST NW, and F 1ST NW.

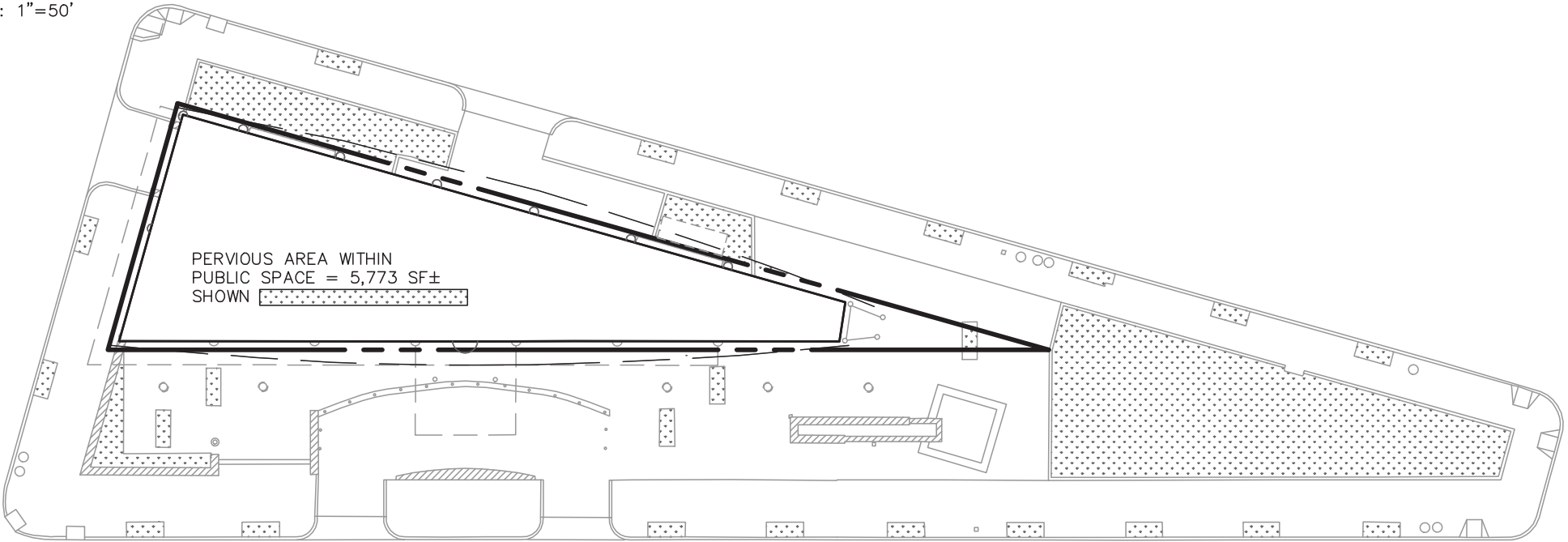




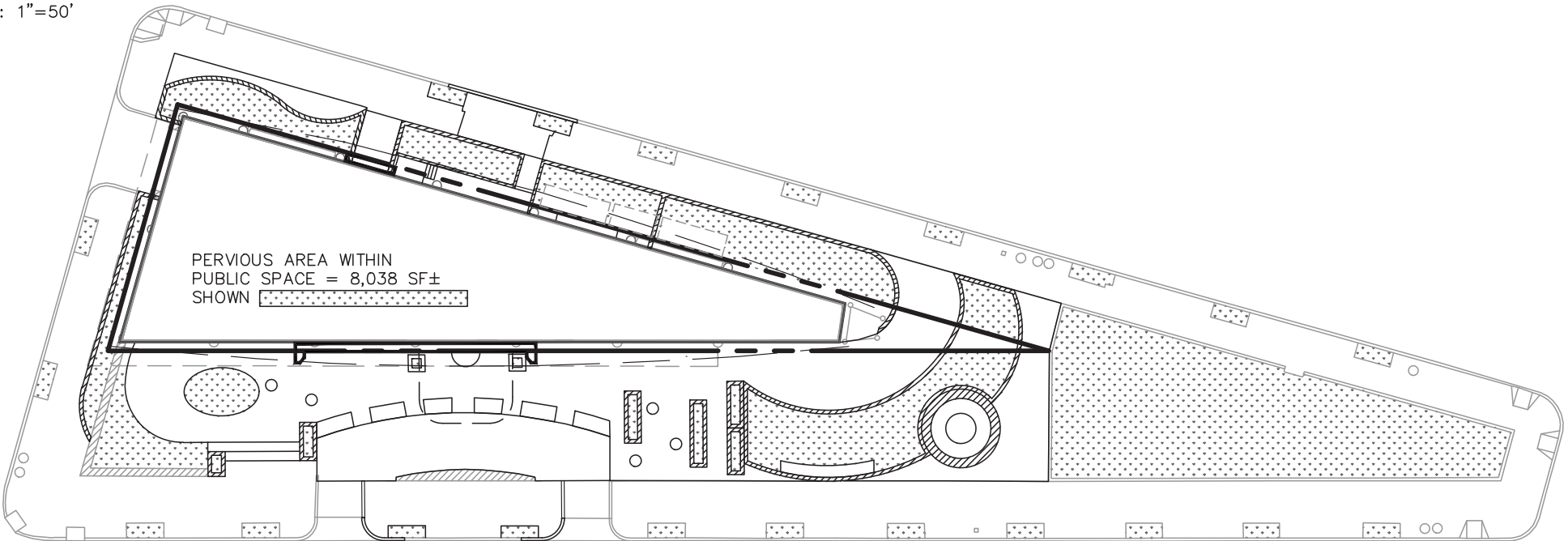
PERVIOUS SURFACE CALCULATIONS (PUBLIC SPACE)		
	AREA (SF)	
EXISTING	5773	
PROPOSED	8038	
ADDED AREA	2265	
TOTAL PERVIOUS SURFACE INCREASE		39%

PERVIOUS SURFACE AREA EXHIBIT

EXISTING CONDITIONS
SCALE: 1"=50'



PROPOSED CONDITIONS
SCALE: 1"=50'



PROPOSED LANDSCAPE PLAN

